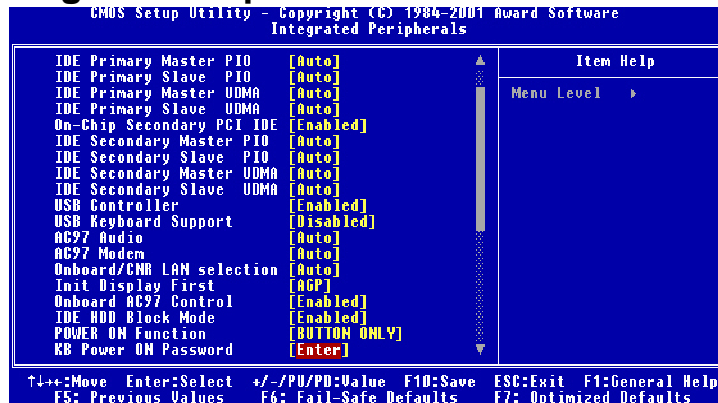


chapter 4:BIOS Setting

4.5 Integrated Peripherals



On-Chip Primary PCI IDE

Enabled / Disabled on-chip primary PCI IDE. Default setting is "Enabled".

On-Chip Secondary PCI IDE

Enabled / Disabled on-chip Secondary PCI IDE. Default setting is "Enabled".

IDE Primary Master / Slave PIO

IDE Secondary Master / Slave PIO

Specify the IDE mode for the system.

IDE Primary Master / Slave UDMA

IDE Secondary Master / Slave UDMA

Auto / Disabled IDE UDMA function feature. Default setting is "Auto", which lets BIOS determine.

USB Controller

Enabled / Disabled USB Controller. Default setting is "Enabled".

USB Keyboard Support

Enabled / Disabled USB Keyboard Support in DOS. Default setting is "Disabled"

AC97 Audio

Default setting is "Auto", BIOS will automatically detect onboard AC97 Audio.

AC97 Modem

Default setting is "Auto", BIOS will automatically detect onboard AC97 Modem.

chapter 4:BIOS Setting

Onboard /CNR LAN selection

Select "onboard" to enable the optional onboard LAN function. Selects "Ext.CNR" to disable onboard LAN function and uses LAN function on CNR card.

Init Display First

Default setting is "PCI Slot", sets Init Display First to PCI Slot.

Onboard AC97 Control IDE HDD Block Mode

Enabled / Disabled IDE HDD Block Mode. Default setting is "Enabled".

Power On Function

Specifies the keyboard hot key, mouse button, power button to wakeup the computer from S3-S5 state. Available options are Button only: Password, Hot key, Mouse left, Mouse right, Any key, keyboard 98. Default setting is Button only.

KB Power On Password

Sets Keyboard Power on Password.

Hot Key Power On

Sets power on Hot key. Default setting is "Ctrl-F1".

On-board FDC Controller

Enabled / Disabled on-board FDC controller. Default setting is "Enabled".

Onboard Serial Port 1 & 2

Specify the I/O port addresses of serial port 1 and 2. Available settings are Auto, Disabled, 3F8h, 2F8h, 3E8h and 2E8h. Default setting is "Auto".

UART Mode Select

Specifies the operation mode of onboard Serial Port 2. The onboard Serial Port 2 can be configured as an Infrared(IR) port or an ordinary RS-232 serial port. Available settings are Normal, IrDA and ASKIR. Default is "Normal".

RxD,TxD Active

Options are "Hi,Hi", "Hi,Lo", "Lo,Lo", "Lo,Hi".

IR Transmission Delay

Enabled / Disabled IR Transmission Delay.

UR2 Duplex Mode

This option is not available when UART is set to "Normal". Available options are Half Duplex and Full Duplex. Default setting is "Half Duplex"

chapter 4:BIOS Setting

Use IR pins

Setting IR mode.Default is IR_Rx2Tx2.

Onboard Parallel Port

Specifies the I/O port address of the onboard parallel port. Available settings are Auto, Disable, 378h, 278h and 3BCh. Default is "Auto".

Parallel Port Mode

Specifies the onboard parallel port mode. Available options are Normal, Bi-Dir, ECP and EPP. Default is "ECP".

EPP Mode Select

Specifies the Enhanced Parallel Port specification version number. This option only appears if the Parallel Port Mode is set to "EPP". The settings are 1.7 or 1.9. Default is N/A because the default setting for the Parallel Port Mode option is not EPP.

ECP Mode USE DMA

This option only appears if the Parallel Port Mode option is set to ECP. It assigns a DMA channel to the onboard parallel port. Available settings are 1, 3. Default is "3".

Game Port Address

Specifies the Onboard Game Port I/O address. Available settings are 201, 209, and Disabled. Default is "201".

Midi Port Address

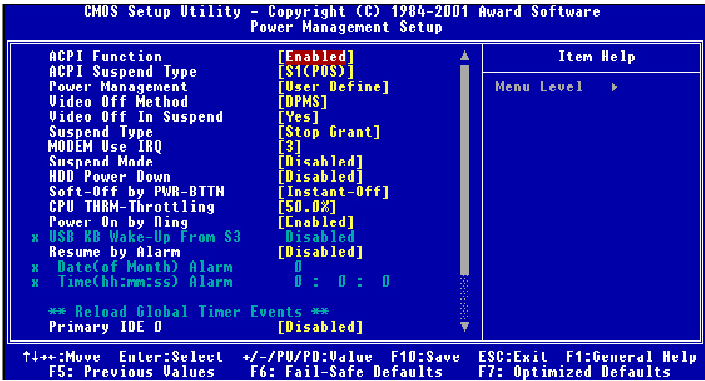
Specifies the I/O address of the MIDI interface on the Onboard Game Port. Available options are 300, 330 ,290 and Disabled. Default is "330".

Midi Port IRQ

Assigns the IRQ line to the MIDI interface. Available options are 5 and 10. Default setting is "10". This option is not available if the Onboard Midi Port is disabled S-232 serial port.

chapter 4:BIOS Setting

4.6 Power Management Setup



ACPI Function

Enabled/disabled ACPI Function. Default setting is "Disabled".

ACPI Suspend Type

Specifies ACPI Suspend type. Default setting is "S1(POS)".

Power Management

Specifies Power Management Mode. Default setting is "User Define".

Video Off Method

Specifies Video off Method. Default setting is "DPMS".

Video Off In Suspend

Specifies Video off in Suspend.

Suspend Type

Specifies Suspend Type. Default setting is "Stop Grant".

Suspend Mode

Specifies Suspend Mode. Default setting is "Disabled".

HDD Power Down

Specifies HDD Power Down Mode. Default setting is "Disabled".

Soft Off by PWR_BTTN

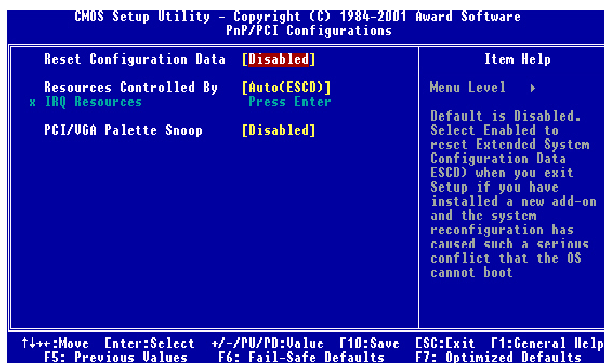
Sets Power Down Mode by PWR_BTTN. Default setting is "Instant-off".

CPU THRM-Throttling

Monitor CPU Temperature, slow down CPU Speed.

chapter 4:BIOS Setting

4.7 PnP/PCI Configurations



Reset configuration Data

Enabled \ Disabled Reset configuration Data. Default setting is "Disabled".

Resources Controlled by

Sets the allocation of PCI resources. Available options are Manual and Auto (ESCD). Default setting is "Auto"(ESCD). BIOS automatically assigns resources.

IRQ Resources

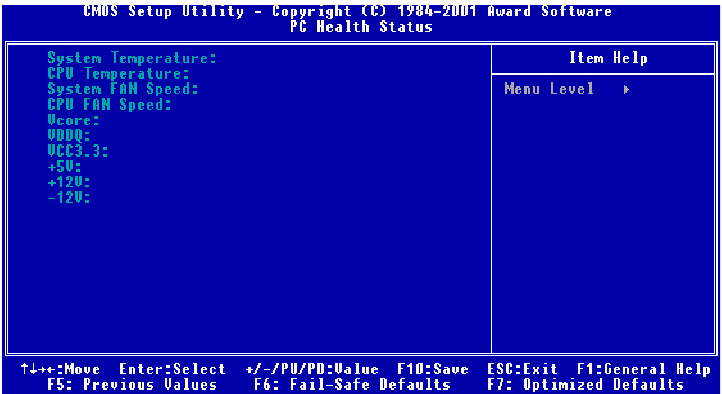
When resources are controlled manually,assign each system interrupt a type, depending on the type of device using the interrupt.

PCI/VGA Palette Snoop

Enabled / Disabled PCI / VGA Palette Snoop, sets Enabled for having Video card on ISA Bus and VGA card on PCI Base, sets "Disabled" for VGA card only.

chapter 4:BIOS Setting

4.8 PC Health Status



Current System Temperature

Current CPU Temperature

Detect System and CPU temperature automatically.

System Fan Speed

CPU Fan Speed

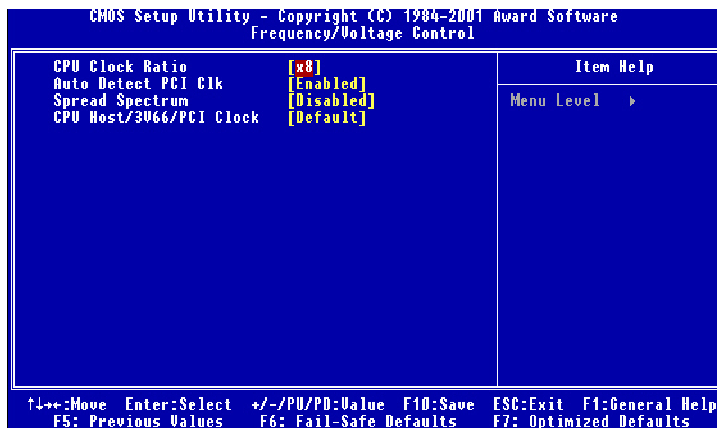
Detect Fan Speed Status automatically.

Vcore/VDDQ/VCC3-3/+5V/+12V/-12V

Detect System Voltage status automatically.

chapter 4:BIOS Setting

4.9 Frequency Control



CPU Clock Ratio

Select CPU core/bus frequency ratio. This setting has no effect on processors with frequency ratio locked.

Auto Detect PCI CLK

Enabled \ Disabled Auto detect PCI CLOCK. Default setting is "Enabled".

Spread Spectrum

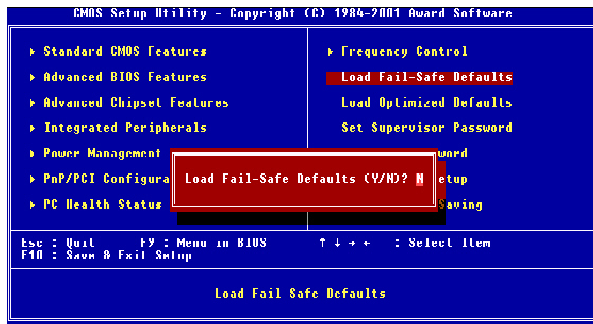
This option turns on/off the Spread Spectrum feature of clock generator to reduce Electromagnetic Interference (EMI) generated by high speed clock signals. Default setting is "Disabled".

CPU Host/3V66/PCI Clock

Select the clock generator of Front Side Bus frequency for CPU over-clocking. Default setting is "Default".

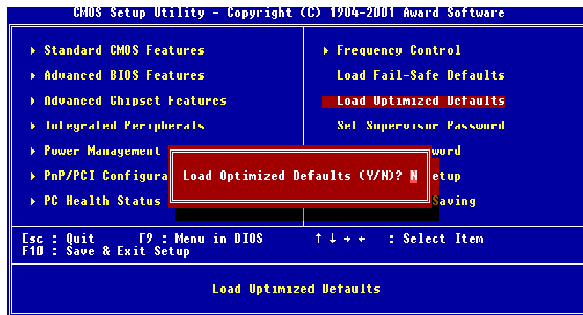
chapter 4:BIOS Setting

4.10 Load Fail-safe Defaults



Fail-safe defaults contain the most appropriate values of the system parameters that allow minimum system performance.

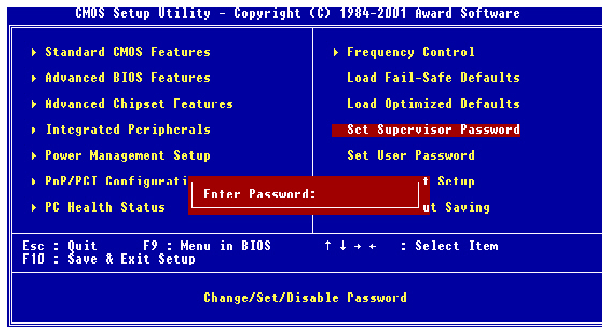
4.11 Load Optimized Defaults



Selecting this field loads the factory defaults for BIOS and Chipset Features which the system automatically detects.

chapter 4:BIOS Setting

4.12 Set Supervisor / User password



When you select this function, the following message will appear at the center of the screen to assist you in creating a password.

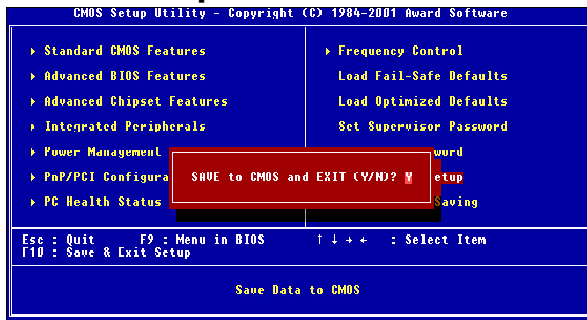
Type the password, up to eight characters and press<Enter>. The new password will clear the previously entered password from CMOS Memory, you will be asked to confirm the Password. Type the password again and press <Enter>.

To disable password,just press <Enter> when you are prompted to enter password.A Message <<PASSWORD DISABLED!!!>>will appear to confirm the password being disabled.Once the password is disabled.the system will boot and you can enter setup freely.

If you select "System" at "Security Option" in "Advanced BIOS Features" Menu, you will be prompted for the password every time.if you select "Setup" at "Security option" in"Advanced BIOS Feature" Menu,you will be prompted only when you try to enter Setup .

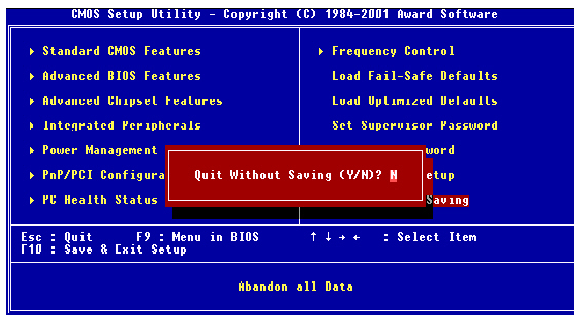
chapter 4:BIOS Setting

4.13 Save & Exit Setup



Type "Y" will quit the Setup Utility and Save the user setup value to RTC CMOS.
Type "N" will return to Setup Utility.

4.14 Exit Without Saving



Type "Y" will quit the Setup Utility and Without Saving the User setup Value.
Type "N" will return to Setup Utility.