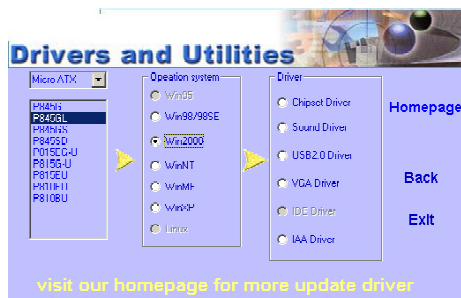




1. Chipset driver: Outline the OS how the chips

1. Chipset driver: Outline the OS how the chipset components shall be configured.
2. Modem: If the M/B which you purchased integrated the Modem, you need to select this item to install the Modem driver..
3. Sound chip drive: Our M/B integrated the onboard sound codec (AC97). If you want to use this onboard sound codec, you need to select the IC type which show as below, and install the driver.
4. UATA Driver: Intel Ultra ATA optimize program, increase the efficiency of IDE .(Option install)

At the end of the installation of drive, we recommend to restart your computer and assure program setting.



chapter 3:Setup Quickly

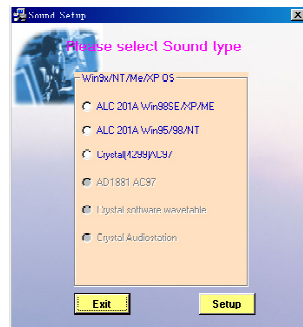
THE SOUND CODEC IC (AC97) INTEGRATED ON YOU M/B

ALC201A

CS4299

CMI9738

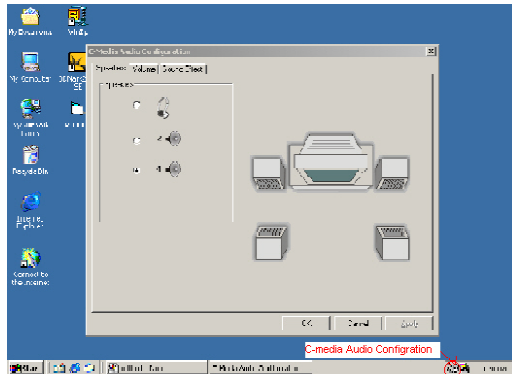
CMI9739



3.5 How to enable 4ch or 5.1ch output \

This question will be explain by CMI9738 in Win2000.

- 1) Please select the logo,which shows"C-media Audio Configuration",click the mouse left button,and soon the dialog box will be shown.



- 2) In the dialog box ,select the item of "4",which is the selection of four channel output.Click "ok",and four channel output is enabled.

Setup Quickly

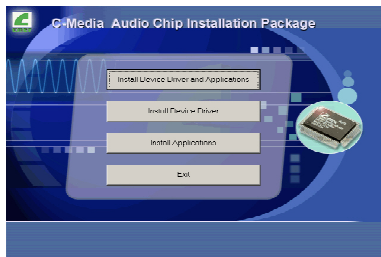
chapter 3:Setup Quickly

3.6 How to identify that Four channel output or 5.1 channel output is enabled?

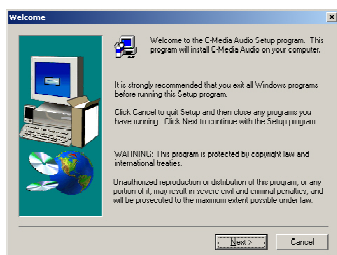
It's still explain by CMI9738.

1 ㄣ First :install CMI9738 Four channel Audio driver and applications:

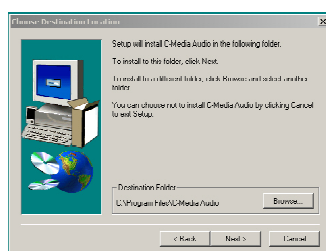
a.Select the CMI9738 Audio installation in the Mainboard CD,and the dialog box will be shown:



b. Select "Install Device Driver and Applications",The dialog boxes will be shown one by one in the list.Please click the "next" in picture 1--picture 5.

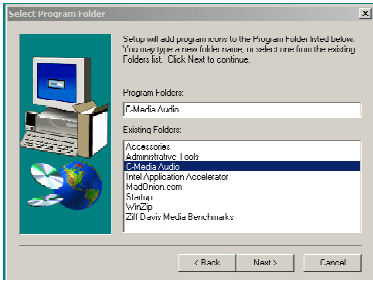


Picture 1

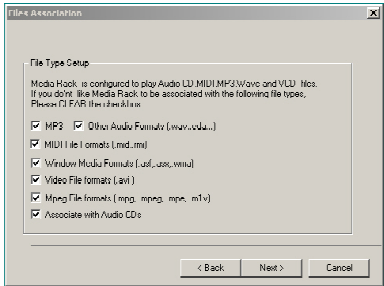


Picture 2

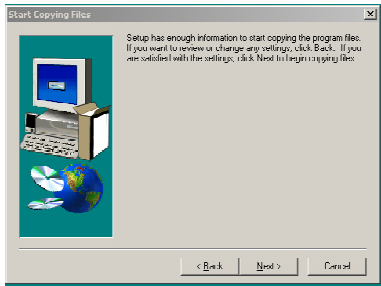
chapter 3:Setup Quickly



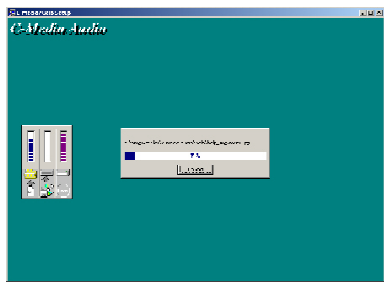
Picture 3



Picture 4



Picture 5

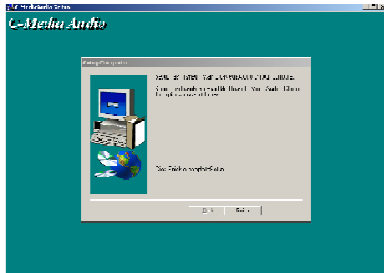


Picture 6

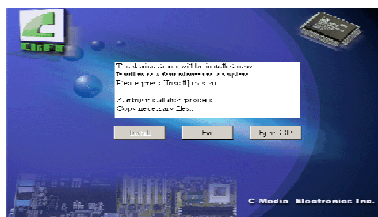
Setup Quickly

chapter 3:Setup Quickly

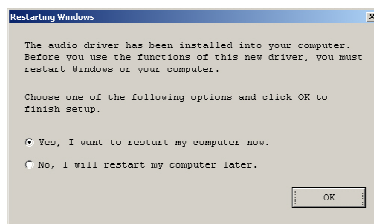
- c. At last the diagram will be shown. Click "Finish", and the installation of Audio Applications is over.



- d. Install Audio Driver. when the picture 2 is shown, click "ok", and restart your computer. The whole installation is over.



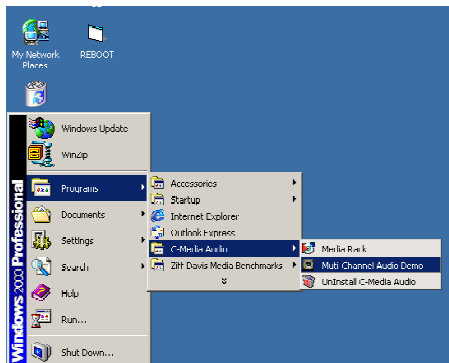
picture 1



picture 2

Chapter 3: Setup Quickly

- 2 ㄅ Open the application of "Multi-channel audio demo" in the menu of "C-media Audio".



- 3 ㄅ Next diagram.



- 4 ㄅ Click "Demo1" or "Demo2" ㄅ and Audio output should happen in the Front speaker and Rear speaker.

Setup Quickly

chapter 3:Setup Quickly

3.7 How to set Super password and User password \

Please follow the steps as below to set the Super password and user password;

- 1) Press "DEL" key inter bios setup when boot-start;
- 2) In"Set Supervisor Password"set super password.Please enter according to the introduce.
- 3) In"Set User Password"set user password.Please enter according to the introduction.
- 4) After you finish the setting of password,you should set the option"Security Option",which lies in ※ Advanced BIOS Features § item. If "System" is chosen, a user password prompt appears every time the computer is turned on. If "Setup" is chosen, the password prompt appears when you try to enter setup .
- 5) After finished your setting,please don't forget to save it and enable it effective.
- 6) When you forget your password for some reason,you can open you computer,clear CMOS in Power-off.(refer 3.2)

chapter 4:BIOS Setting

4.1 AWARD BIOS Description

The BIOS (Basic Input/Output system) provides the low-level support for the standard devices such as disk drives, serial and parallel ports. It contains codes for advanced features found on the system board such as virus and password protection.

It is very important to configure the BIOS correctly; otherwise the system board may not work properly. There are three situations for the user to configure the BIOS.

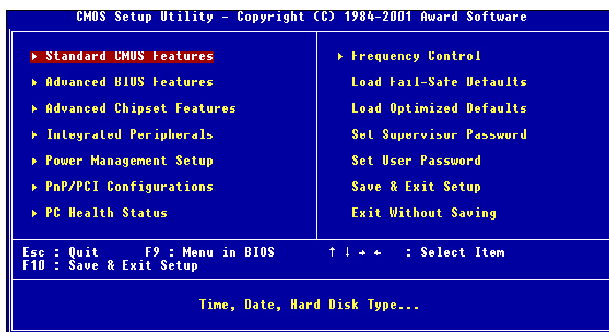
- * The hardware configuration data stored in the BIOS need to be changed according to the new hardware installed.
- * To configure the provided special feature of the BIOS.
- * The CMOS RAM has lost the content due to out of battery.

Starting AWARD BIOS setup

The BIOS reads the system information contained in the CMOS and begins the process of checking out the system and configuring it. After the POST (Power On Self Test) has finished, it'll appear the following message on the screen:

"Press DEL to enter SETUP"

Press the key to call up the Setup. When you invoke Setup, the CMOS SETUP main menu appears with the following options. (Its option may have little difference for different model).



chapter 4:BIOS Setting

Award BIOS Setup

Standard CMOS Feature	Set time & date, hard disk drive type, type of floppy drive, Monitor type.
Advanced CMOS Feature	Select system boot sequence, floppy control, CPU cache settings, Shadow RAM.
Advanced Chipset Feature	Configure chipset specific options and features
Integrated Peripherals	Configure onboard I/O device addresses and operating modes.
Power Management Setup	Select various power saving options.
PnP/PCI Configurations	Set PCI Plug and Play device options.
PC health Status	Report system / CPU temperature and cooling fans status.
Frequency/Voltage Control	Select CPU' s Front Side Bus (FSB) frequency and core/bus frequency ratio.
Load Fail-Safe Defaults	Load settings that are more likely to configure a workable computer when something is wrong. If you cannot boot the computer successfully, select the Fail-Safe option and try to diagnose the problem after the computer boots. These settings do not provide optional performance.
Load Optional Defaults	Load settings that provide best performance characteristic. (Default factory settings)
Setup Supervisor Password	Change / Add / Remove supervisor password.
Setup User Password	Change / Add / Remove user password.

chapter 4:BIOS Setting

4.2 Standard CMOS Features



Time / Date

These fields provide you with the current date and time. Note that the hour is displayed as a 24-hour clock. For example, 1:00 PM is 13:00:00.

Floppy Drive A,

Floppy Drive B(A845DD,A845SD,A845E,P845SD)

This option selects the type of floppy drives installed.

Primary Master,

Primary Slave,

Secondary Master,

Secondary Slave

These options enter another menu for hard disk detection by click "Enter" key.

Video

This field allows you to select monitor type .Options are:" MONO"," CGA40"," CGA80" and " EGA/VGA".

Halt on

Allow the system to halt during BIOS boot up when error occurs.

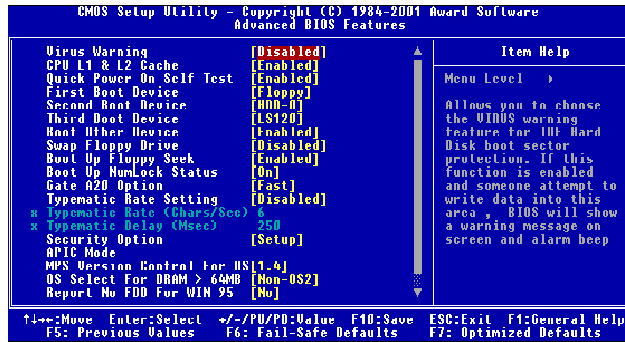
Options are " All,But keyboard"," All,But Diskette"," All,But Disk/Key"," No errors"," All Errors".

Base Memory,Extended Memory,Total Memory

Display the current size of memory installed.

chapter 4:BIOS Setting

4.3 Advanced BIOS Features



Virus Warning

Enabled / Disabled Virus Warning function. Default setting is "Disabled".

CPU L1&L2 Cache

Enables processor on-chip L1 and L2 cache memory. Default is "Enabled".

Quick Power on Self Test

When Enabled, BIOS will skip certain power-on self-test (POST) procedures (such as memory test above 1MB) to speed up the boot process. Default setting is "Disabled".

First / Second / Third Boot Device

Assign the priority of each storage device to be the boot-up drive. Supported devices are HDD, Floppy, LS-120, ATAPI ZIP, CDROM, SCSI, NETWORK. Default boot sequence is Floppy -> HDD-0 -> CDROM.

Boot Other Devices

Specifies whether BIOS to boot from other device not listed in the 1st/2nd/3rd Boot Device options when BIOS fail to boot from those devices. Default setting is "YES".

Swap Floppy Drive

Set this option to "Enabled" to permit drives A: and B: to be swapped. Default is "Disabled".

chapter 4:BIOS Setting

Boot Up Floppy Seek

Specify whether floppy drive A: will perform a Seek operation at system boot. Default setting is "Disabled".

Boot Up NumLock Status

Set this option to "OFF" to turn the Num Lock key off when the computer is booted so you can use the arrow keys on both the numeric keypad and the keyboard. Default is "ON".

Gate A20 Option

Sets "Fast", lets chipset control Gate A20; Sets "Normal", lets a pin in the keyboard controller control Gate A20. Default setting is "Fast".

Typematic Rate setting

Enabled / Disabled Typematic Rate setting, when enabled, the typematic rate and typematic delay can be selected. Default setting is "Disabled".

Security Option

Enables password checking every time the computer is powered on or every time BIOS Setup is executed. If System is chosen, a user password prompt appears every time the computer is turned on. If "Setup" is chosen, the password prompt appears if BIOS Setup is executed. Default is "Setup".

APIC Mode

Enables advance program interrupt control

MPS Version Control For OS

Options are 1.1 and 1.4. Default is "1.4".

OS Select For Dram > 64MB

Set to "Enabled" if running OS/2 operating system and using more than 64MB system memory. Default is "Disabled".

Report No FDD For Win95

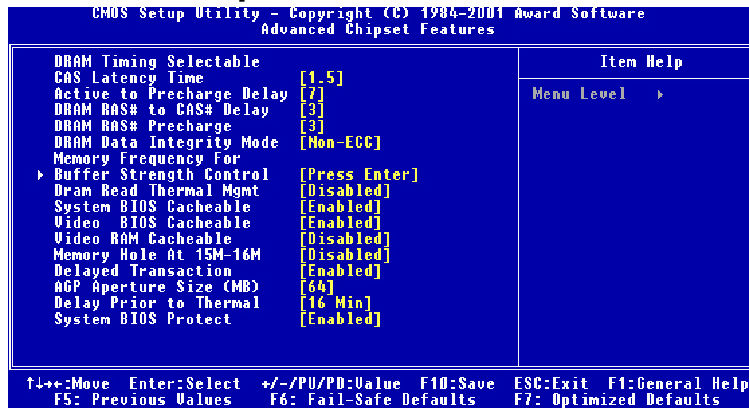
Selects "YES" when the system is running Win95 and no FDD is installed. Default is "NO".

Small logo(EPA) Show

Enable/Disable EPA logo to be shown during bootup.

chapter 4:BIOS Setting

4.4 Advanced Chipset Features



DRAM Timing Selectable

Manual/By SPD.Select"By SPD" to allow BIOS to get the optimized timing data from the data stored on the DIMM modules.Otherwise,select"Manual"to configure the following timing constrains.

CAS Latency Time

Specifies the number of SCLKs between the time when the read command is sampled by DRAM and the Whitney Sample reads data from DRAM.Available setting are 1.5,2,2.5.

Active to Precharge Delay

Specifies the active to precharge delay:The setting is 7,6,5.

DRAM RAS-to-CAS Delay

Specifies the length of the delay inserted between the RAS and CAS signals of the DRAM system memory access cycle. The settings are 2 SCLKs or 3 SCLK s. Default setting is "3".

DRAM RAS Precharge

Specifies the length of the RAS precharge part of the DRAM system memory access. Available settings: 2 SCLKs, or 3 SCLKs. Default setting is "3".

DRAM DATA Integrity Mode

Display integrity mode of the DIMM modules.Option are Non-ECC/ECC.Defaults setting is "Non-ECC".

chapter 4:BIOS Setting

Memory Frequency For

Set frequency of DIMM memory.Default is "AUTO".

CPU Latency Timer

Enables CPU BIST. Default is "Disabled".

Buffer Strength Control

This option allows the experience user to fine tune the DRAM control setting.

Leave this setting as default will have more safe & stability performance.

DRAM Read Thermal Mgmt

Select "Enable" to allow Dram Read Thermal Mgmt to manage DRAM speed according to it's temperature.Once the DRAM temperature increase to a specific level,Thermal Mgmt will slow down DRAM speed for a certain period of time(can be specific in "Delay Prior to Thermal")in order to cool down the DRAM temperature to determine whether to change DRAM speed back to its normal operation speed or not. Default is"Disabled".

System BIOS Cacheable

Enabled/Disabled System BIOS catch.Default setting is "Disabled".

Video Bios cacheable

Enabled/Disabled Video BIOS catch.Default setting is "Enabled".

Video RAM cacheable

Enabled/Disabled S-Video RAM catch.Default setting is "Disabled".

Memory Hole At 15M-16M

Enabled/Disabled Memory Hole at 15M-16M.Default is "Disabled".

Delayed Transaction

Enabled/Disabled ICH(I/O Controller Hub) delayed transactions for internal register,firmware Hub(FWH) and Low Pin Count(LPC)interface access.default is "Disabled".

AGP Aperture Size

Set maximam memory aperture for onboard AGP port.Available settings are 4MB,8MB,16MB,64MB,128MB and 256MB.Default is "128MB".

Delay Prior to Thermal

You must have "Dram Read Thermal Mgmt" option enabled in order for this option tobe meaningful.This option sets the time between each DRAM Thermal detection once the Thermal activities.Options are 4min/8min/16min/32min. Default is "16min".

System BIOS Protect

Enabled to protect system BIOS from overwritten.