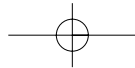
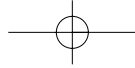


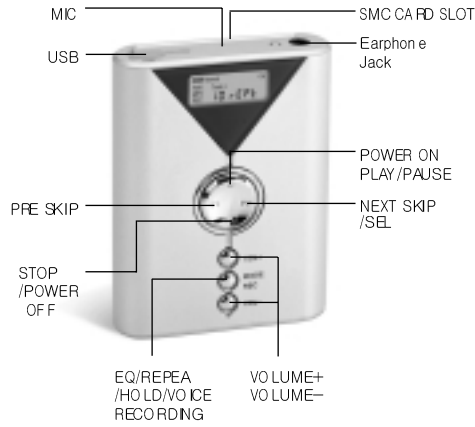
CONTENTS

FEATURE &FUNCTION	3
DISPLAY OF LCD PANEL	4
MODE SELECTIONS.....	5
INSTALLING THE SOFTWARE	7
DOWNLOADING/UPLOADING MP3 FILES.....	10
TROUBLESHOOTING.....	11
DYM-3000 WARRANTY.....	12
MP3 PLAYER MAIN FEATURES &Specifications	13



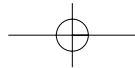
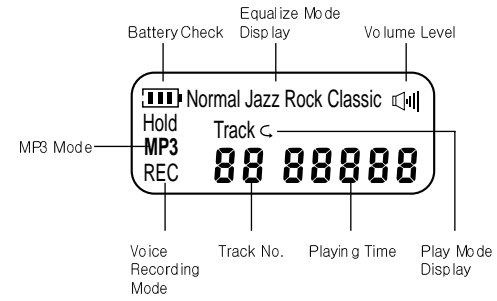


FEATURE & FUNCTIONS



- **POWER ON/PLAY/PAUSE**
Push PLAY KEY to power-on. Press PLAY KEY 1 time while power-on to play, twice to pause.
- **NEXT SKIP/SEL**
Press FF key to select next track.
- **PRE SKIP**
Press REW KEY to select all track.
- **VOLUME+ / VOLUME-**
Press VOLUME+ and VOLUME- to adjust volume.
- **STOP / POWER OFF**
Press STOP once to stop playing, twice to power-off. Pressing STOP button while selecting MODE will exit from MODE.

DISPLAY OF LCD PANEL



MODE SELECTIONS

Press mode once ; EQ MODE
 Press mode twice ; REPEAT MODE
 Press mode three times ; HOLD
 Press mode four times ; RECORDING MODE (WHEN MP3 IS NOT PLAYING)

Switching modes



MODE (EQ/REPEAT/HOLD)

EQ: NORMAL/JAZZ/ROCK/CLASSIC.

Pressing MODE KEY will show "EQ (Default: Normal)."
 Select EQ-MODE by pressing FF KEY.



REPEAT: Press MODE KEY twice to show REPT.

REPEAT can be set up or cancelled by pressing FF KEY.

MODE SELECTIONS

Voice recording mode



Pressing MODE KEY 4 times will switch to RECORDING MODE while
 POWER ON (REC will show on LCD display).

Pressing MODE KEY for 3-4 seconds will start recording while in
 RECORDING MODE.

PLAY/FF/REW/STOP/Vol+/Vol- work the same as in MP3 Mode
 (Pressing STOP KEY will stop recording).

Del all



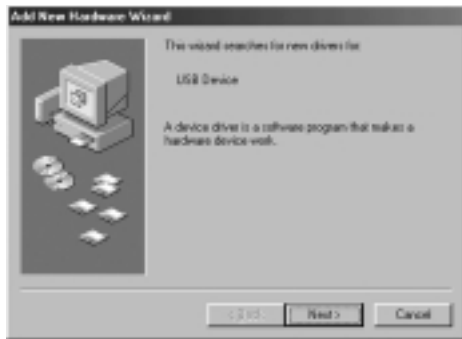
Pressing VOL + and VOL - at the same time will
 reset the memory.

Please wait until the LCD display shows the initial screen.

INSTALLING THE SOFTWARE

For Win98

1. Connect USB to PC and MP3 player, PC will detect a new driver.
2. Click next when "USB Device" is shown.



8 DIGITAL MP3 PLAYER

INSTALLING THE SOFTWARE

3. Click on "Display a list of all the drivers in a specific location, so you can select the driver you want" and click next.



DIGITAL MP3 PLAYER 9

INSTALLING THE SOFTWARE

4. Select "Universal Serial Bus controllers" and click Next.



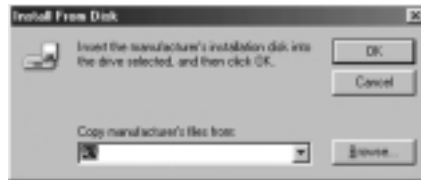
INSTALLING THE SOFTWARE

5. Click "have disk", insert the diskett, and click Next.



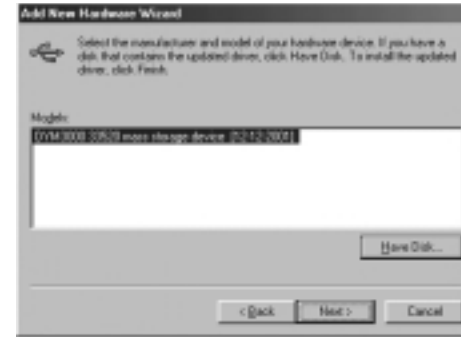
INSTALLING THE SOFTWARE

6. Click "Browse", and select drive a:.



INSTALLING THE SOFTWARE

7. Select "DYM3000.inf", and click next.



INSTALLING THE SOFTWARE

8. Keep clicking on "Next", and "Done" to finish installation.



※WIN 2000/XP users do not need any program installation.

DOWNLOADING /UPLOADING MP3 FILES

When the MP3 player is connected to USB port, it is detected as "removable disk."

There are 2 folders in the removable disk, MP3 folder for storing MP3 files, g729 folder for recording files.

1. Connect USB cable to USB port of PC.
2. Turn on the power and plug-in the USB cable to the player.
3. Click windows explorer.
4. Removable drive will appear in windows explorer.
5. Click on MP3 folder and select a file(s).
6. Drag and drop the selected MP3 file to the MP3 folder of removable disk.

Tip : After selecting a MP3 file, hold down CTRL key and press C.
Click MP3 folder once and hold down CTRL key and press V.

7. Downloading starts in a few seconds.
After downloading is completed, remove USB cable from the player.
8. * *If SMC is inserted, SMC memory will be automatically detected.

CAUTION : DO NOT UNPLUG USB CABLE WHILE DOWN /UPLOADING MP3 FILES.

TROUBLESHOOTING

Check this list for troubleshooting

The power does not turn on	Check if the batteries are properly inserted
Funtion keys do not work	Check if "hold" is set in MODE
No sound	Check if there are files in the memory. Change earphones
I have a problem downloading	Check if the USB cable is properly plugged-in
I cannot insert SMC card	Check the inserting direction

Caution

Do not place the player at high temperature
 Do not drop or put pressure on the player
 Do not place the player near water

DYM-3000 WARRANTY

DYM-3000 MP3 player comes with a one year hardware warranty. Digital Device Inc. warrants the product against defects in material and workmanship for a period of one year from the date of purchase. This warranty applies only to the original purchaser of the product and is not transferable. This warranty does not cover any incompatibilities due to the user's computer, hardware, software or any other related system configuration to which the product interfaces. Proof of purchase will be required before any warranty consideration by Digital Device Inc. takes place. This warranty does not cover any damage caused by negligence, non-authorized modifications, or parts installed without prior written approval from Digital Device Inc.. This warranty does not apply if the product has been damaged by accident, abuse, misuse, or incorrect application, nor as a result of service to the product by anyone other than by Digital Device Inc..

DIGITAL DEVICE INC. IS NOT RESPONSIBLE FOR ANY LOST PROFITS, LOST SAVINGS OR OTHER INCIDENTAL OR CONSEQUENTIAL DAMAGES ARISING OUT OF THE USE OF, OR INABILITY TO USE THIS PRODUCT. THIS INCLUDES DAMAGE TO PROPERTY AND DAMAGES FOR PERSONAL INJURY.

MP3 PLAYER MAIN FEATURES & SPECIFICATIONS

Model	DYM-3000
Digital Sound Control LCD Display	Equalizer Control: Normal / Classic / Jazz / Rock Diverse play mode: Repeat / Repeat all Mode stattes, Battery, EQ, Track No time, Volume
MP3 file Download	USB interface
Specifications	<ul style="list-style-type: none"> ● Main memory : 32MB/64MB/128M Flash memory ● Expansion memory : 16M/32M/64M/128M/SMC(Optional) ● Play time : 33 min (128K bps), 66 min (64K bps) ● S/N ratio : 90 dB or better ● Frequency Range : 20Hz ~ 20KHz ● T. H. D. : 0.01% ~ 0.1% ● Download speed : 3M bps or better ● Voice recording : G729 method (16Min./1MB) ● Power supply : One "AAA" size 1.5V battery ● Weight : 55g ● Dimension : 58mm × 65mm × 17mm(L × H × D)
Accessory	<ul style="list-style-type: none"> ● Stereo earphone ● Battery, User Manual ● USB cable ● Installation diskette

FCC NOTICE

NOTE: This equipment has been tested and found to comply with the limits for a Class B digital device, pursuant to part 15 of the FCC Rules. These limits are designed to provide reasonable protection against harmful interference in a residential installation. This equipment generates, uses and can radiate radio frequency energy and, if not installed and used in accordance with the instructions, may cause harmful interference to radio communications. However, there is no guarantee that interference will not occur in a particular installation. If this equipment does cause harmful interference to radio or television reception, which can be determined by turning the equipment off and on, the user is encouraged to try to correct the interference by one or more of the following measures:

- Reorient or relocate the receiving antenna.
- Increase the separation between the equipment and receiver.
- Connect the equipment into an outlet on a circuit different from that to which the receiver is connected.
- Consult the dealer or an experienced radio/TV technician for help.

NOTE: The manufacturer is not responsible for any radio or TV interference caused by unauthorized modifications to this equipment. Such modifications could void the user's authority to operate the equipment.