

Super Mini Optical Mouse & Mini USB receiver

RF Wireless Optical Mouse

User's Guide



P/No : 981-800000-001
www.celink.com.tw



User's Guide

BATTERY INSTALLATION

1. Press the button to open the top cap (fig. 1). (fig. 1-1)
2. Put 2 AAA Alkaline batteries as its polarity. (fig 1-2)
3. Put back the top cap and close it.

! Caution:

- Make sure of polarity.
- Battery type has to be AAA Alkaline battery (1.5V).
- Take out the batteries while mouse is not in use for a long time.
- Every time after replacing batteries, reset up the mouse by following the "setup for linkage".

HARDWARE INSTALLATION

1. Shut down the power of the computer.
2. Connect the Receiver with USB extension cable to the USB port on PC (fig. 2-1).
3. Place the receiver beside the notebook or desktop PC (fig. 2-2).
4. Turn on the PC.
5. Switch on the power switch (fig. 3).

! Caution:

- For traveling, please switch off the battery to save battery power (fig. 3).

DRIVER INSTALLATION

1. Insert the photo-disk into Drive-D (In case the CD-ROM is in D-drive).
2. Get into "execution" on window screen. Click twice on the file of "setup.exe" in D-drive of photo disk to setup, and follow the steps indicated in the screen to complete the procedure (fig. 4).
3. After the setup has been completed, the screen will restart automatically. And, it will show a mouse pattern in the bottom right hand corner of the screen.

! Caution:

- Some computers in Windows 98 will require inserting Windows 98 CD to finish the installation of driver.

SETUP FOR LINKAGE (ID SETUP)

1. Aim the front point of the mouse at receiver.
2. PRESS FIRST THE CONNECT BUTTON OF THE MOUSE, THEN PRESS THE CONNECT BUTTON OF THE RECEIVER (fig. 5). NEVER DO THE CONTRARY WAY.
3. When the connect button of the receiver is pressed, the LED light inside the receiver will light up. As soon as the linkage is completed, the LED will go off.
4. The setup must be completed in one minute. If exceeded, please repeat the steps.

BUTTON FUNCTION SETUP

1. Get into setup from the control desk or directly click into the mouse pattern shown on right-down corner of the screen. It shows the functions as following:
 - Button: setup for habit of using right or left hand, adjustment of the speed of continuously pressing twice the mouse buttons, adjustment of numbers of column for each rolling.
 - Mouse Marking: to set up the pattern or mouse marking.
 - Wheel: to set up the functions of hot key, zooming, and rolling of auto-turning.
 - Motion: to set up the moving speed of mouse sign, the length of the dragging tail, and non-border, etc.
2. After the function is set up, press "Yes" to store the new setup.

SETUP FOR MULTIUSERS

When there is more than one unit of this product in a same place, the next one must wait 30 seconds to do setup after the previous one has completed his setup.

ENVIRONMENT

- To avoid environmental interference, which will shorten the effective distance, it should be noted below:
1. Do not put the mouse and receiver on metal cabinet or metal desk. It's better no having metal or interference source around, which may affect the RF communication, and shorten the communication distance.
 2. The ideal place for the mouse and receiver is having 15-20 cm distant from computers or, any open place.
 3. Keep a distance of more than 1.5m to avoid interference if there are other RF devices in using.
 4. The optical sensor of the mouse won't work correctly while it is on a mirror, glass, reflecting, half-tone painted surface, and 3D mouse pad.

DEBUG

The cursor doesn't react when moving the mouse.

- Probably because of the distance between the receiver and mouse is out of working range, please adjust the distance. The radiation from monitor screen and PC case may interfere and cause the communication problem. Please adjust the distance or relocate the mouse and receiver.

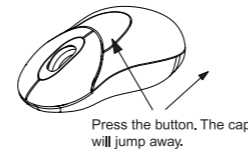
- When using this wireless device on a metal table and in a place near to metal furniture or product, please use a non-light reflecting and thick mouse pad.
- Probably the ID setup is not succeeded. Please reset the ID.
- The optical sensor of the mouse won't work correctly while it is on a mirror, glass, reflecting, half-tone painted surface, and 3D mouse pad.

INFORMATION THAT USERES MUST KNOW.

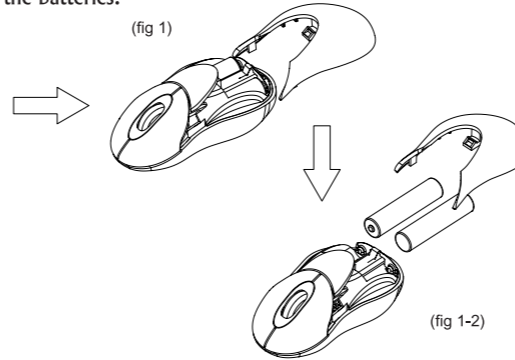
1. When connect to USB port, it requires Windows 98, Windows 2000, or Win Me working on your PC.
2. When under Windows 98 working system, for the first time use of this mouse with USB port, it may require inserting Windows 98 CD. Please follow the instructions step by step to complete the setup.

How to open the cap and put the batteries.

(fig 1-1)

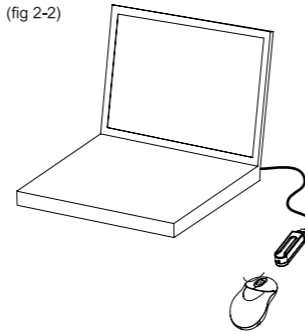


(fig 1)

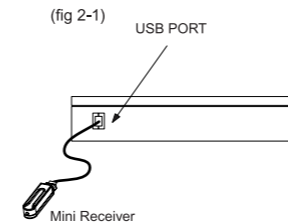


Hardware Installation

(fig 2-2)

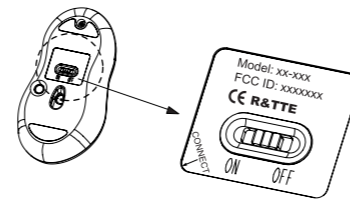


(fig 2-1)



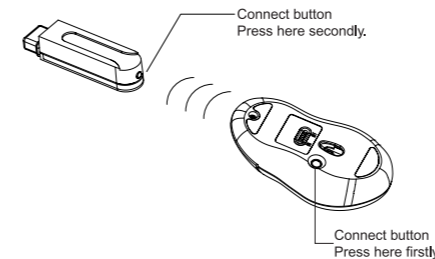
Battery on-off switch

(fig 3)

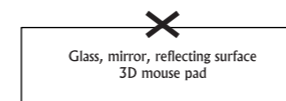


Setup for linkage

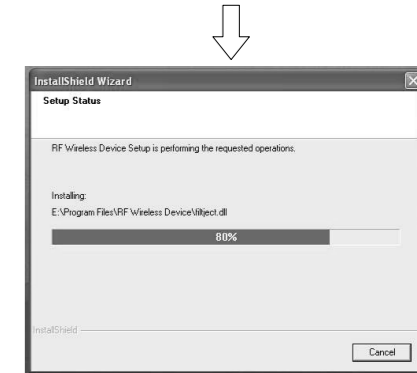
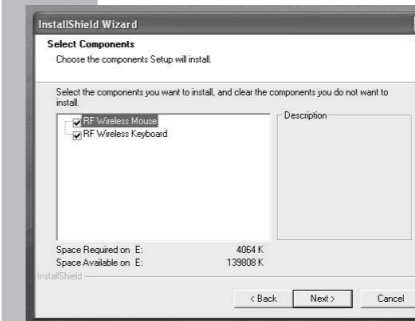
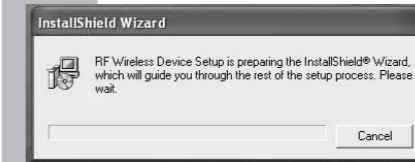
(fig 5)



Environment



DRIVER SETUP (fig 4)



Mouse pattern

FCC Compliance and Advisory Statement

This device complies with Part 15 of the FCC rules. Operation is subject to the following two conditions: 1) this device may not cause harmful interference, and 2) this device must accept any interference received, including interference that may cause undesired operation.

The equipment has been certified to comply with the limits for a Class B computing device pursuant to Part 15 of the FCC Rules. These limits are designed to provide reasonable protection against harmful interference in a residential installation. This equipment generates, uses, and can radiate radio frequency energy and, if not installed or used in accordance with the instructions, may cause harmful interference to radio communications. However, there is no guarantee that interference will not occur in a particular installation. If this equipment does cause harmful interference to radio or television reception, which can be determined by switching the equipment off and on. The user can try to correct the interference by the following measures:

1. Reorient or relocate the receiving antenna.
2. Increase the separation between the equipment and receiver.
3. Connect the equipment to an outlet on a circuit different from that to which the receiver is connected.
4. Consult the dealer or and experience radio/TV technician for help.

Changes or modification not expressly approved by the party responsible for compliance could void the user's authority to operate the equipment.