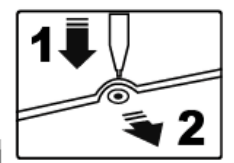
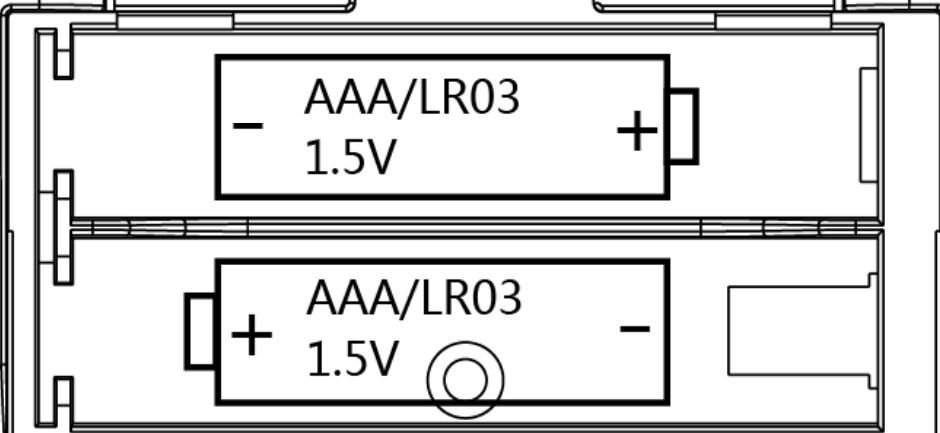


AH™

© 2019 SML
44646
ALL RIGHTS RESERVED
MADE IN CHINA

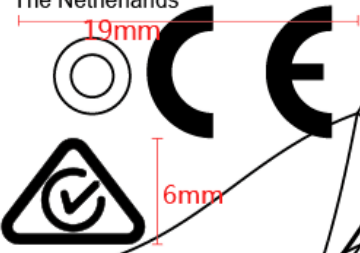


This device complies with Part 15 of the FCC Rules. Operation is subject to the following two conditions:
(1) This device may not cause harmful interference, and
(2) This device must accept any interference received, including interference that may cause undesired operation.



11mm
7.3mm
SPIN MASTER LTD.,
450 FRONT STREET WEST,
TORONTO, ON
M5V 1B6 CANADA.

8.1mm
7.8mm
IMPORTED INTO EU BY
SPIN MASTER INTERNATIONAL,
Kingsfordweg 151,
1043 GR Amsterdam,
The Netherlands



14.7mm
7.35mm
FCC ID: PQN44646TX2G4
CAN ICES-3(B)/NMB-3(B)
IC: 4438B-44646TX
MODEL: 44646TX 1.21mm

