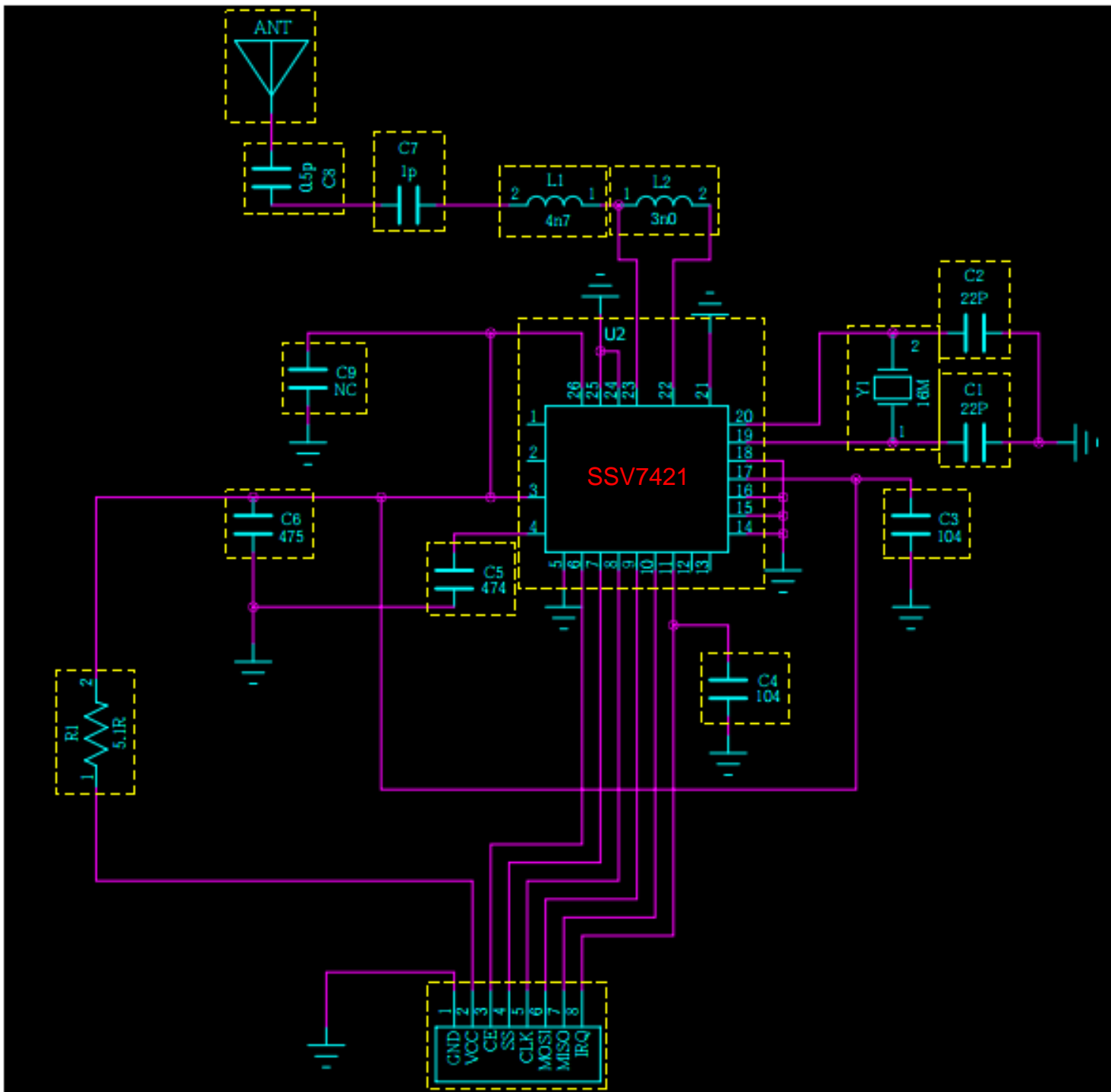


Programming pin list: P71.P51.P50.P67.P55.P70.VDD.VSS

- Remark:**
1. DC-DC Output voltage: 5.0V
  2. Charge current 450mA+/-30mA
  3. Charge cut-off Voltage: 4.20V+/-0.05V

**Dong Guan Lam Sun Plastic Products CO Ltd**

<b>DRAWN:</b>	<b>DATE:</b>	<b>TITLE:</b>	
<b>DESIGN:</b>	<b>DATE:</b>	<b>MODEL NO: 44542TX</b>	
<b>CHECKED:</b>	<b>DATE:</b>	<b>DRAWN NO:</b>	<b>SIZE:A4</b>
<b>APPROVED:</b>	<b>DATE:</b>	<b>SHEET:1 OF 1</b>	<b>REV:1.0</b>



RF Module WT24DK2015A