

TROUBLESHOOTING cont'd...		
PROBLEM	CAUSE	SOLUTION
The Osprey™ is not reacting to the controller/charger.	Osprey™ may not be turned ON.	Turn Osprey™ ON.
Osprey™ is losing control.	There may be another device around using the same frequency.	Avoid these if possible, or choose another place to operate the Osprey™.
Osprey™ may be too far away from the controller/charger.	Osprey™ might be turned OFF during charging.	Move closer to the Osprey™ with the controller/charger.
Osprey™ is not holding a charge.	Controller/charger is low on battery power.	Turn OFF the Osprey™ so that it's not flashing. Replace batteries in the controller/charger.
Osprey™ will not lift off the ground.	Osprey™ may not be fully charged.	Charge Osprey™ fully until green light turns off.
Osprey™ only turns in one direction.	Osprey™ is not trimmed correctly.	Refer to the TRIMMING section in the instruction sheet.
Suddenly stops and drops while flying.	NOTE: Osprey™ only moves forward and sideways. Weak power.	Re-charge Osprey™ or check battery power in controller/charger.
	Osprey™ may be out of range of controller/charger. NOTE: Maximum range of controller/charger from Osprey™ is approximately 30 metres (100 feet).	Move closer to the Osprey™ with the controller/charger.

NOTE: If normal function of the product is disturbed or interrupted, strong electro-magnetic interference may be causing the issue. To reset product, turn it completely off, then turn it back on. If normal operation does not resume, move the product to another location and try again. To ensure normal performance, change the batteries, as low batteries may not allow full function.

For further questions and problems, please visit our website www.airhogs.com.

Safety Precautions - Keep hands, hair and loose clothing away from the rotors when power switch is turned ON.
- Turn off controller/charger and Osprey™ when not in use.
- Remove battery from controller/charger when not in use.
- Parental guidance is recommended for the flight.
- Keep your Osprey™ in your sight so that you can supervise it all the time.

This product complies with Part 15 of the FCC rules. Operation is subject to the following two conditions: (1) This device may not cause harmful interference, and (2) This device must accept any interference received, including interference that may cause undesirable operation. This equipment has been tested and found to comply with the limits for Class B digital devices pursuant to Part 15 of the FCC rules. These limits are designed to provide reasonable protection against harmful interference to radio communications. Because this toy generates, uses, and can radiate radio frequency energy, if not installed and used in accordance with the instructions, may cause harmful interference to radio communications. There can be no guarantee that interference will not occur. If this toy does cause interference to radio or television reception (you can check this by turning the toy off and while listening for the interference), one or more of the following measures may be useful - Reorient or relocate the receiving antenna - increase the separation between the toy and the radio or the TV - Consult the dealer or an experienced TV-radio technician for help. NOTE: Changes, adjustments or modifications to this unit, including but not limited to, replacement of any transmitter component (crystal, semiconductor, etc.) could result in a violation of FCC rules under part 15 and may not be expressly approved by Spin Master Ltd. or they could void the user's authority to operate the equipment.

CANADIAN Class B statement: This Class B digital apparatus complies with Canadian ICES-003.
CANADIAN RSS-310 statement: This Category II radio communication device complies with Industry Canada Standard RSS-310.
Carrier frequency: 27.145MHz Field strength: 69.50uV/m at 3m.

Care and Maintenance:
- Always remove batteries from the toy when it is not being used for a long period of time. (controller/charger only)
- Wipe the toy gently with a clean damp cloth.
- Keep the toy away from direct heat.
- Do not submerge the toy in water. This can damage the electronic assemblies.
- Remove batteries for prolonged storage.
- DO NOT insert used batteries. (not included).
- Batteries are small objects.
- Replacement of batteries must be done by adults.
- Follow the polarity (+/-) diagram in the battery compartment.
- Promptly remove dead batteries from the toy.
- Dispose of used batteries properly.
- DO NOT short-circuit the supply terminals.
- Do not allow the batteries to get wet.
- Only charge the batteries with the specified Spin Master™ battery charger.
- Only use the batteries in the device.
- Charge battery in isolated area. Keep away from flammable materials.
- Do not expose to direct sunlight. There is a risk of the batteries exploding, overheating, or igniting.
- Do not disassemble, modify heat, or short circuit the battery. Do not place them in fires or leave them in hot places.
- Do not drop or subject to strong impacts.

BATTERY SAFETY INFORMATION:
- Requires 8 x 1.5V AA alkaline batteries (not included).
- Batteries are small objects.
- Replacement of batteries must be done by adults.
- Follow the polarity (+/-) diagram in the battery compartment.
- Promptly remove dead batteries from the toy.
- Dispose of used batteries properly.
- DO NOT short-circuit the supply terminals.
- Do not allow the batteries to get wet.
- Only charge the batteries with the specified Spin Master™ battery charger.
- Only use the batteries in the device.
- Charge battery in isolated area. Keep away from flammable materials.
- Do not expose to direct sunlight. There is a risk of the batteries exploding, overheating, or igniting.
- Do not disassemble, modify heat, or short circuit the battery. Do not place them in fires or leave them in hot places.
- Do not drop or subject to strong impacts.

Special Note to Adults:
- Regularly examine for damage to the plug, enclosures and other parts. In the event of any damage, the toy must not be used with the controller/charger until the damage has been repaired.
- This toy is not intended for children under 3 years old.
- This toy should only be used with the recommended controller/charger.
- Do not try to charge other batteries with controller/charger.

Battery requirement for Osprey™:
- Power Supply : ---
- Rating : DC 3.7 V, 1.8 W
- Batteries : 8 x 1.5 V AA/LR6/AM3
- Requires 8 x 1.5 V AA size batteries (not included)

Battery requirement for Controller/Charger:
- Power Supply : ---
- Rating : DC 12 V, 0.45 W
- Batteries : 8 x 1.5 V AA/LR6/AM3
- Requires 8 x 1.5 V AA size batteries (not included)

PRODUCT BATTERY REMOVAL INSTRUCTIONS: Internal battery is factory installed, product disassembly and battery removal must be performed by an adult. Do not use any tools for disassembly. Pulling, pushing, and deforming of the product during disassembly, while necessary, should be as limited as possible. Do not compress the product at any time. Ensure product is turned off. Find a point where the two body halves meet; the nose of the aircraft or where the wing meets the body. Start to peel the halves apart, separating them where they are glued together; remove any tape as necessary. Separate product body halves to expose internal electronics. To separate battery from product use scissors to cut a single battery wire, immediately wrap the cut wire end with tape to isolate it, repeat until all battery wires are cut and isolated. Dispose of battery in accordance with your local battery recycling or disposal laws. NOTE: Opening of product and/or removal of battery will render product inoperative and voids manufacturer warranties, dispose of remaining product components in accordance with local laws.

Note:
- Parental guidance is recommended when installing or replacing batteries.
- Under the environment with electrostatic discharge, the toy may malfunction and require user to reset the toy.

Spin Master Ltd., 450 Front Street West, Toronto, ON M5V 1B6 Canada
Spin Master Inc., 1185 Humber Blvd., 300 International Drive, Suite 100, Willowdale, ON M2H 1S2, USA
Spin Master Toys Far East Limited, Rm #113, 11/F, Chancetown Golden Plaza, 77 Mohr Rd., Temasek, Singapore
North American Consumer Information
Phone: 1-800-822-8339
Email: customerservice@spinmaster.com
www.spinmaster.com

2023902, 20M1455, NBL English, REV 0
2023902, 0001, 20029902, NBL, IS, R1
4



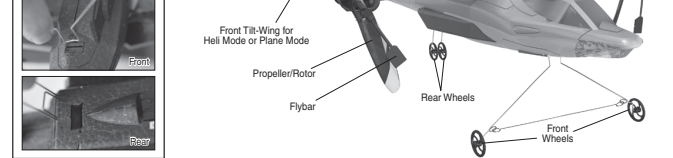
INSTRUCTION GUIDE

CONTENTS LIST AND PARTS IDENTIFICATION



AH OSPREY™

ATTACHING WHEELS
Attach the front and rear wheels to the Osprey™ as shown. The wires on the wheels slide into the slots on the Osprey™ and snap into place.

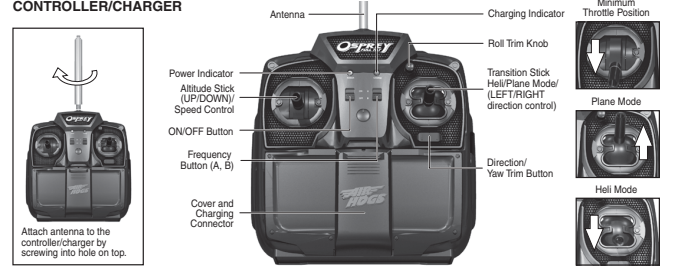


WARNING: CHOKING HAZARD - Small parts. Not for Children under 3 years.

CAUTION: Do not touch the running propeller! Do not play above someone's head! Adult supervision is required!

DANGER! NEVER INSERT ANY SHARP OBJECTS, PINS OR SCREWS INTO THE HELICOPTER AS THIS MAY PUNCTURE THE INTERNAL BATTERY!

BECOMING FAMILIAR WITH YOUR CONTROLLER/CHARGER



Attach antenna to the controller/charger by screwing into hole on top.

HOW TO INSTALL YOUR BATTERIES

BATTERY INSTALLATION - CONTROLLER/CHARGER
1. Open the battery door with a screwdriver (pic. 1). 2. If used batteries are present, remove these batteries from the unit by pulling up on one end of each battery. 3. Install new batteries as shown in the polarity diagram (+/-) inside the battery compartment (pic. 2). 4. Replace battery door securely (pic. 3). 5. Check your local laws and regulations for correct recycling and/or battery disposal.



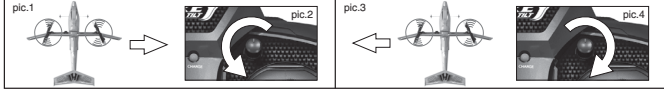
HOW TO CHARGE YOUR OSPREY™

1. Turn controller/charger off and lift up the cover. Take out the charging wire.
2. Turn the Osprey™ OFF using the ON/CHG/OFF switch on the underside of the Osprey™.
3. Insert the charge plug into the charge socket located on the underside of the Osprey™.
4. Turn the controller/charger ON/OFF switch ON. The charging LED will light up. Once fully charged the charging LED turns off. Pull the charge plug out of the Osprey™ and store in controller/charger.

Things to remember:
- Flight times and charge times are influenced by numerous factors. Typical flight times vary from 4-7 minutes with a 30 to 45+ minute charge time.
- Before you recharge the battery, wait 10-15 minutes to let the battery cool down.

HOW TO TRIM YOUR OSPREY™

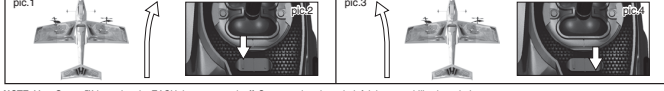
TRIMMING FOR HELI MODE
Roll Trimming: 1. If the plane moves toward the right (pic. 1) when flying, rotate the roll-trim dial to the left until the plane flies straight (pic. 2). 2. If the plane moves toward the left (pic. 3) when flying, rotate the roll-trim dial right until the plane fly straight (pic. 4).



Yaw Trimming: 1. When the plane turns right involuntarily (pic. 1), press the left side of the yaw trim button ("L") repeatedly until the plane flies straight (pic. 2). 2. When the plane turns left involuntarily (pic. 3), press the right side of the yaw trim button ("R") repeatedly until the plane flies straight (pic. 4).



TRIMMING FOR PLANE MODE
1. If the plane turns right involuntarily (pic. 1), press the left side of the yaw trim button ("L") repeatedly until the plane flies straight (pic. 2). 2. If the plane turns left involuntarily (pic. 3), press the right side of the yaw trim button ("R") repeatedly until the plane flies straight (pic. 4). NOTE: The roll-trim dial has no function in plane mode.



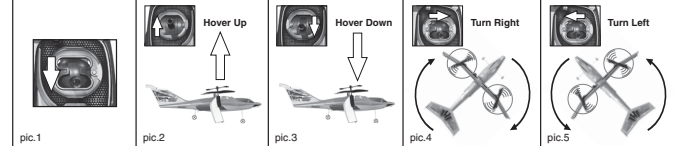
NOTE: Your Osprey™ loses its trim EACH time you turn it off. So remember these helpful tips to stabilize it each time.

WHERE TO FLY YOUR OSPREY™

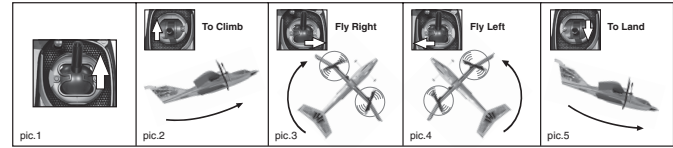
1. Location - Fly in a large wide-open, grassy location that is free of buildings, trees, overhead wires, and other obstructions.
2. Weather - Fly on mild, sunny days. Do not fly in electrical storms, rain, sleet, snow or other adverse weather conditions. Do not fly if the temperature is below 70°F/21°C. In very cold temperatures the engine performance will decrease.
3. Wind Conditions - Do not fly in strong winds. Strong winds will overpower the Osprey™ and make it difficult to control.
CAUTION: Never fly near your face. Keep propellers/rotors away from your fingers, hair, eyes and other body parts. Always lift off from a flat surface. Never hold the Osprey™ in your hand when lifting off. DO NOT launch Osprey™ near people or animals. Stay away from obstacles and electrical hazards.

HOW TO FLY YOUR OSPREY™

HELI MODE: Vertical Take-off: Move the transition stick to the lower position (pic. 1). Gently push the altitude stick forward to make the Osprey™ hover up (pic. 2). Gently pull the altitude stick back to make the Osprey™ hover down (pic. 3). To turn right (pic. 4) or left (pic. 5) give short, small inputs to the transition stick. DO NOT look at the controller/charger but focus on the Osprey™. NOTE: Once the Osprey™ leaves the ground it automatically flies forward slowly. NOTE: If, on initial lift-off, without using the transition stick, the Osprey™ turns to the left or right, you will need to trim the Osprey™ to make it fly straight. See trimming the Osprey™ in HELI MODE.

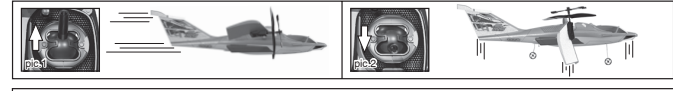


PLANE MODE: After establishing vertical take-off, you can change to plane mode by shifting the transition stick to the upper position (pic. 1). To accelerate and climb, push the altitude stick slowly (pic. 2). NOTE: Once the Osprey™ leaves the ground it should automatically fly forward. To fly to the right (pic. 3) or left (pic. 4) move the transition stick in the direction you wish to go. To land, pull altitude stick back slowly until it flies at a lower altitude to allow for vertical landing. Move transition stick down to tilt wings 90 into heli mode. Reduce throttle slowly to land plane. (pic. 5). NOTE: If, on initial take-off, without using the transition stick, the Osprey™ turns to the left or right, you will need to trim the Osprey™ to make it fly straight. See trimming for PLANE MODE.



CHANGING FLIGHT MODES

- While flying the Osprey™ in either plane or heli mode you can change modes in flight. - With transition stick in the up position the Osprey™ will fly horizontally like a plane with propeller/rotors acting like propellers (pic. 1). - Moving the transition stick down will rotate the main wing 90° into the heli mode with the propeller/rotors acting like rotors. The Osprey™ will start to rise vertically and fly like a helicopter (pic. 2). - Change to plane mode while in mid-air for awesome flights and land either in plane or heli mode.



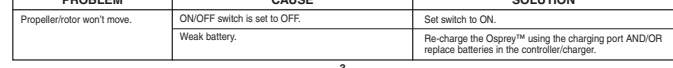
HOW TO REPLACE DAMAGED PROPELLERS

Remove screw holding propeller (pic. 1). Spread bars and remove damaged propeller (pic. 2). Insert new propeller making sure pin in bar goes through hole in propeller. Replace screw. NOTE: Make sure you use correct propeller for correct side (pic. 3).



HOW TO REPLACE DAMAGED FLYBAR

If flybar is damaged and needs to be replaced, remove locking ring, detach connecting bars carefully, separate split post holding flybar and remove. Ensure that the flat side and faces forward. Reverse procedure to replace. NOTE: Make sure you use correct flybar for correct side (pic. 1).



TROUBLESHOOTING

PROBLEM	CAUSE	SOLUTION
Propeller/rotor won't move.	ON/OFF switch is set to OFF. Weak battery.	Set switch to ON. Re-charge the Osprey™ using the charging part AND/OR replace batteries in the controller/charger.