

hp

Pursuant to FCC Part 15 Section 15.235 Emissions Requirement

MKR 48.5 KHZ

Report No.: 0609549
Model No.: 44210
Sample No.: 1/1

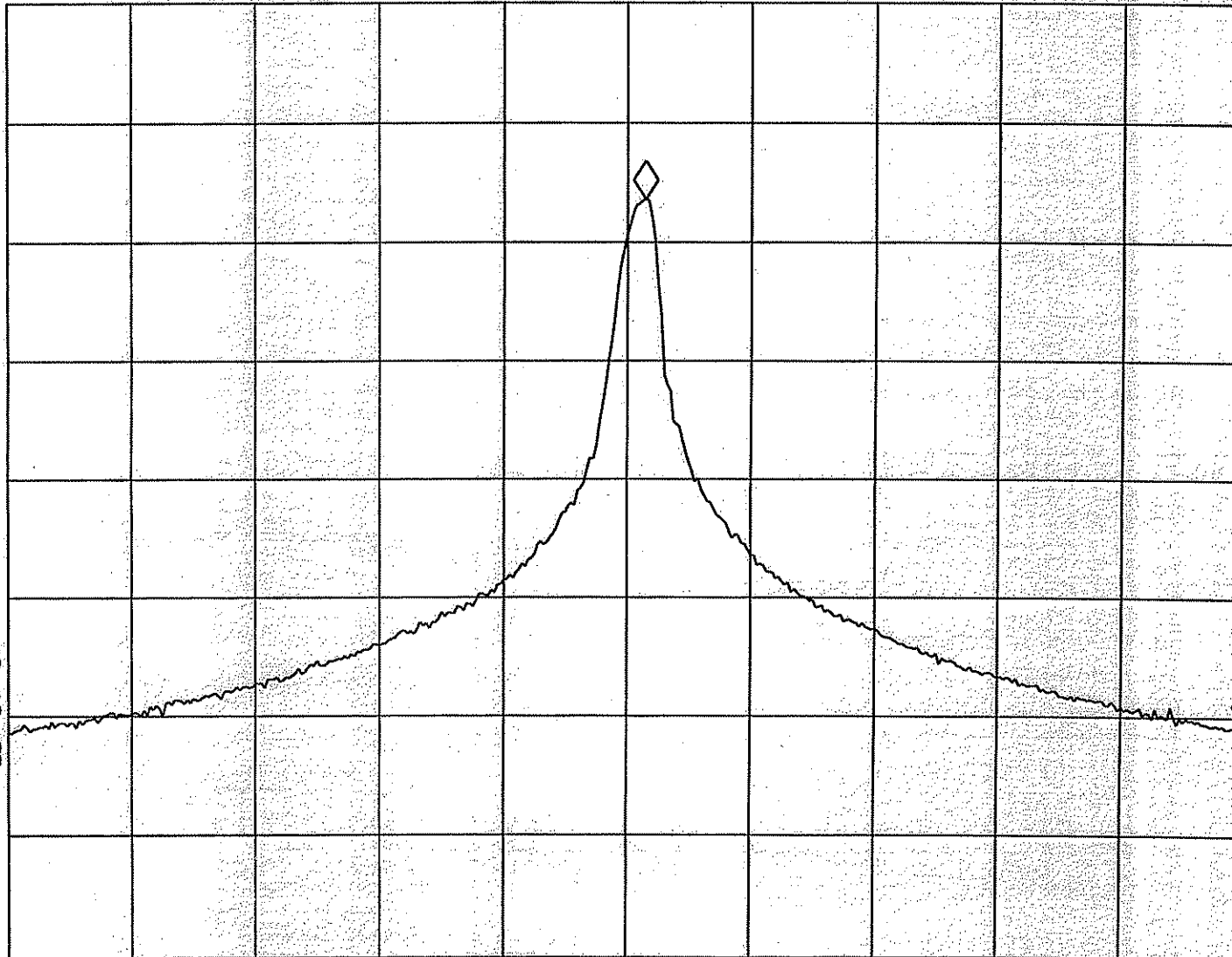
REF -10.0 dBm

AT 10 dB

-44.28 dB

PEAK
LOG
10
dB/

MA SB
SC FS
CORR



Tested By: ben
(Chen Ho Kim)

Date: 18/05/2006

Checked By: [Signature]
(Gary Li)

Date: 23/5/06

Test Result: Pass / Fail / NA

START 49.8100 MHz

STOP 49.9100 MHz

#RES BW 1.0 KHZ

#VBW 3 MHz

#SWP 500 msec