

INTERTEK TESTING SERVICES

Report No: 0607739
Model No: #4210
Sample No: #1/2

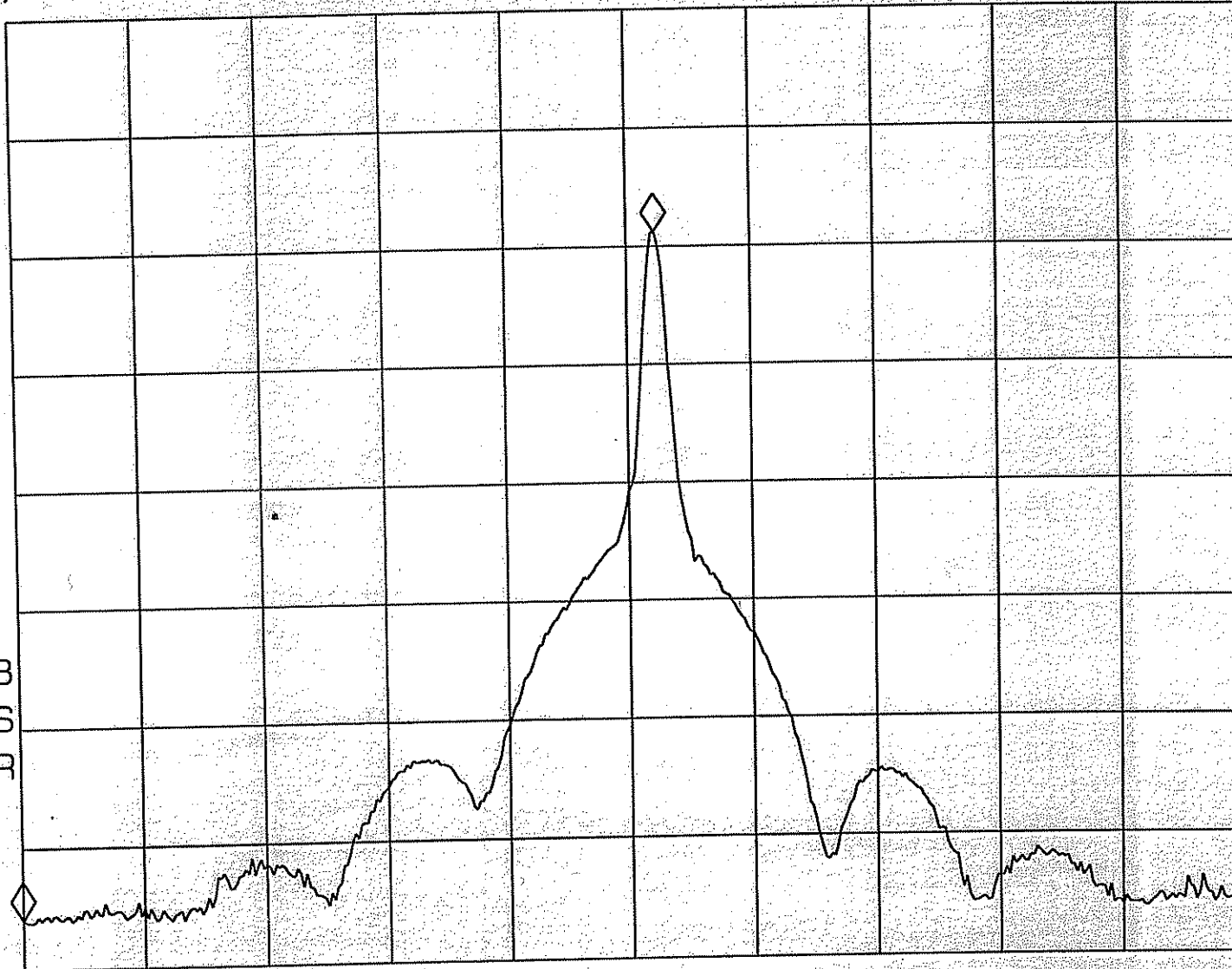
hp Pursuant to FCC Part 15 Section 15.227 Emissions Requirement

MKR -627 KHZ
-57.11 dB

REF .0 dBm

AT 10 dB

PEAK
LOG
10
dB/



Tested By: Chan Ho Yin

Date: 25/04/2006

Checked By: Gary Li

Date: 28/04/2006

Test Result: Pass / Fail / NA

START 26.520 MHz

STOP 27.720 MHz

#RES BW 10 KHZ

#VBW 3 MHz

#SWP 500 msec

Code: M_bandwidth_plot_a / Effective Date: 15 Jul 2002

Report No.: 0607739
Model No.: #44210
Sample No.: 109 1/2

Pursuant to FCC Part 15 Section 15.227 Emissions Requirement

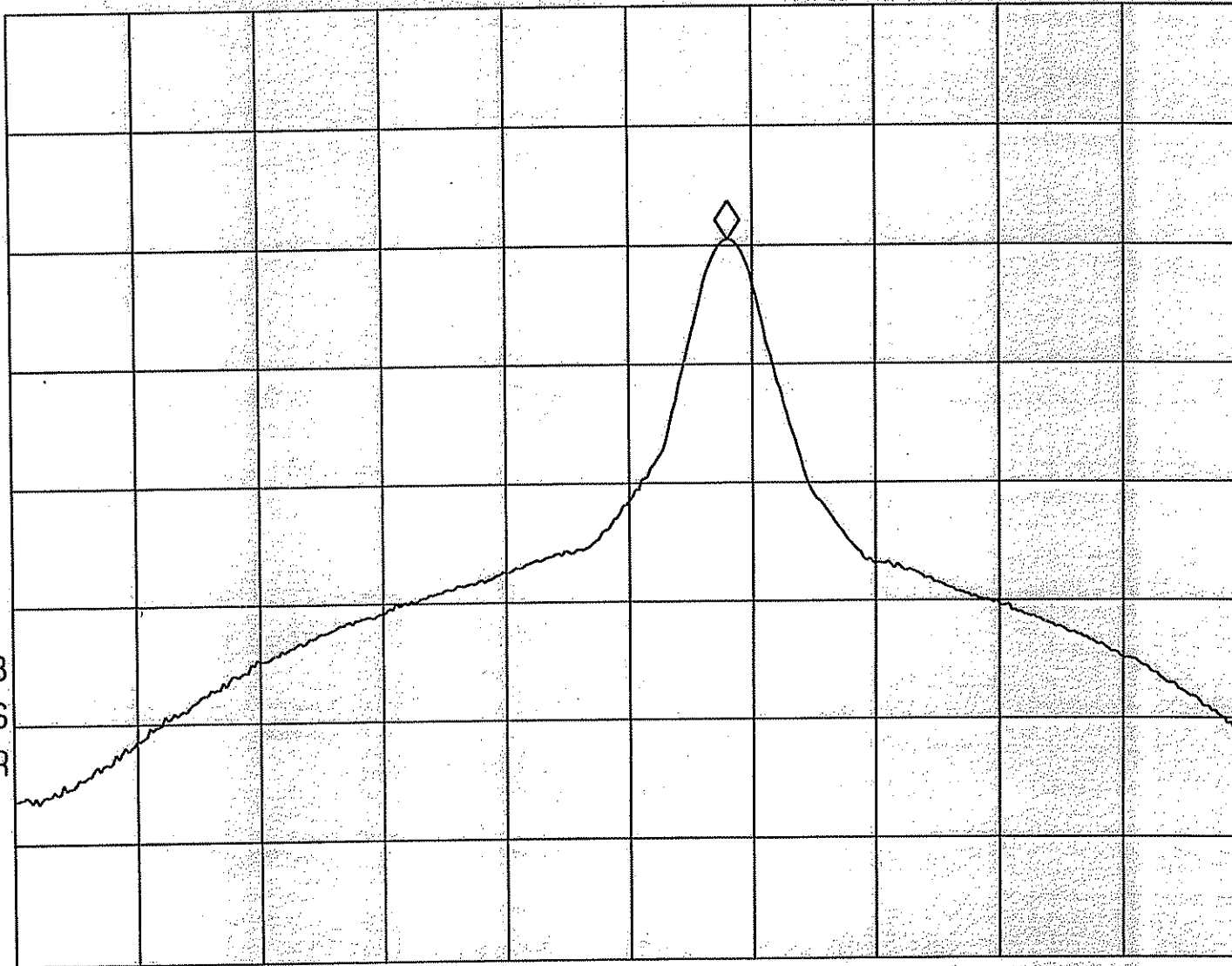
MKR 134.4 KHZ

REF .0 dBm

AT 10 dB

-41.99 dB

PEAK
LOG
10
dB/



MA SB
SC FS
CORR

Tested By: Chan Ho Yin

Date: 25/04/2006

Checked By: Gary Li

Date: 28/04/2006

Test Result Pass / Fail / NA

START 26.9600 MHz

STOP 27.2800 MHz

RES BW 10 KHZ

#VBW 3 MHz

#SWP 1.00 sec