

INTERTEK TESTING SERVICES

Report No.: 0520255
Model No.: #44041
44041 (44041²)

Pursuant to FCC Part 15 Section 15.235 Emissions Requirement

hp

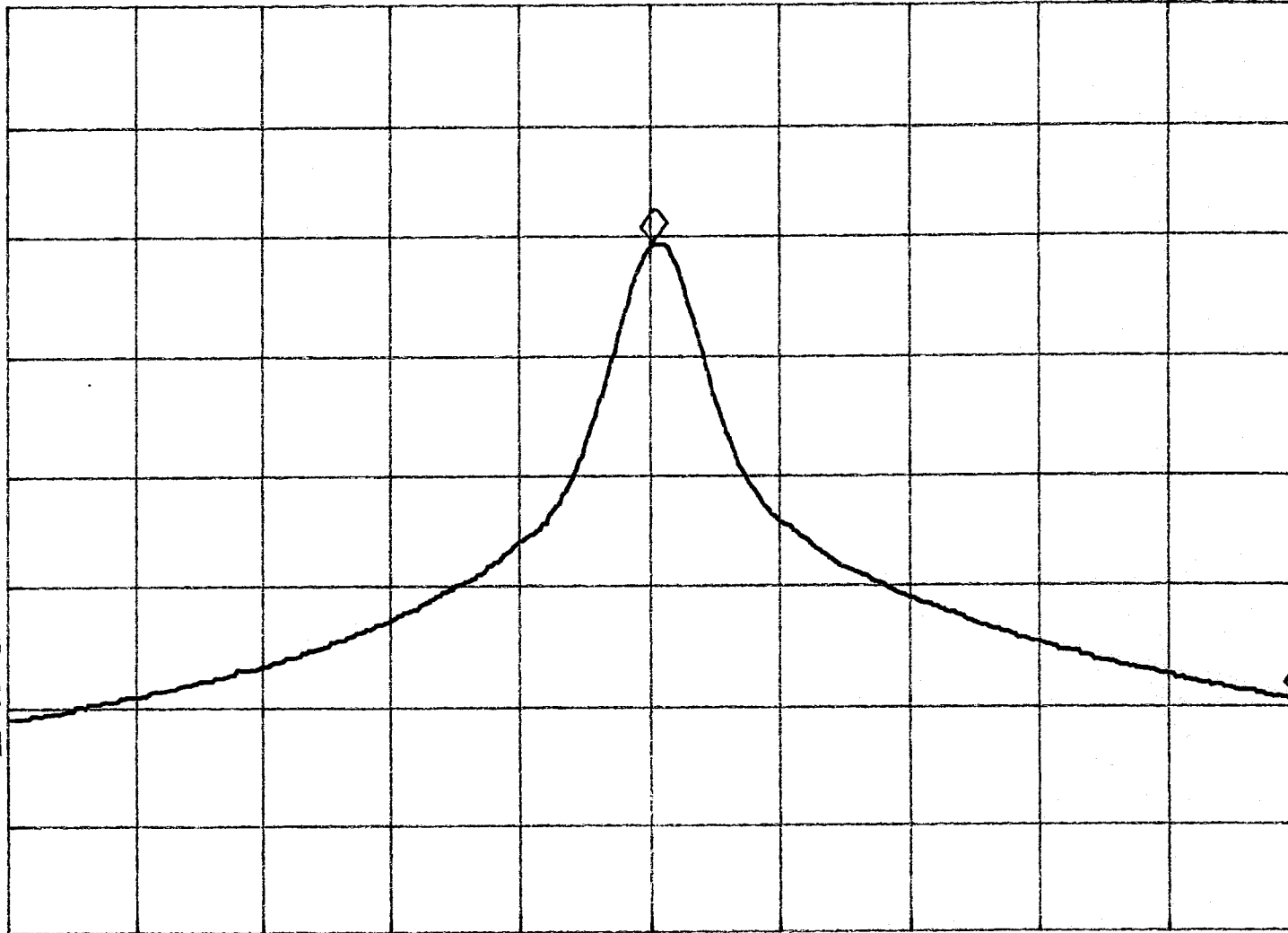
REF 87.0 dB μ V

AT 10 dB

MKR 49.8 KHz

-39.07 dB

PEAK
LOG
10
dB/



Tested By: CK
(Kerrick abing)
Date: 30/12/03
Checked By: [Signature]
(Vick)
Date: 30/12
Test Result: Pass Fail / NA

START 49.8100 MHz

#RES BW 3.0 KHz

VBW 3 KHz

STOP 49.9100 MHz

#SWP 2.00 sec