

INTERTEK TESTING SERVICES

Report No.: 0320253
Model No.: #44041 (44043)
John

Pursuant to FCC Part 15 Section 15.227 Emissions Requirement

hp

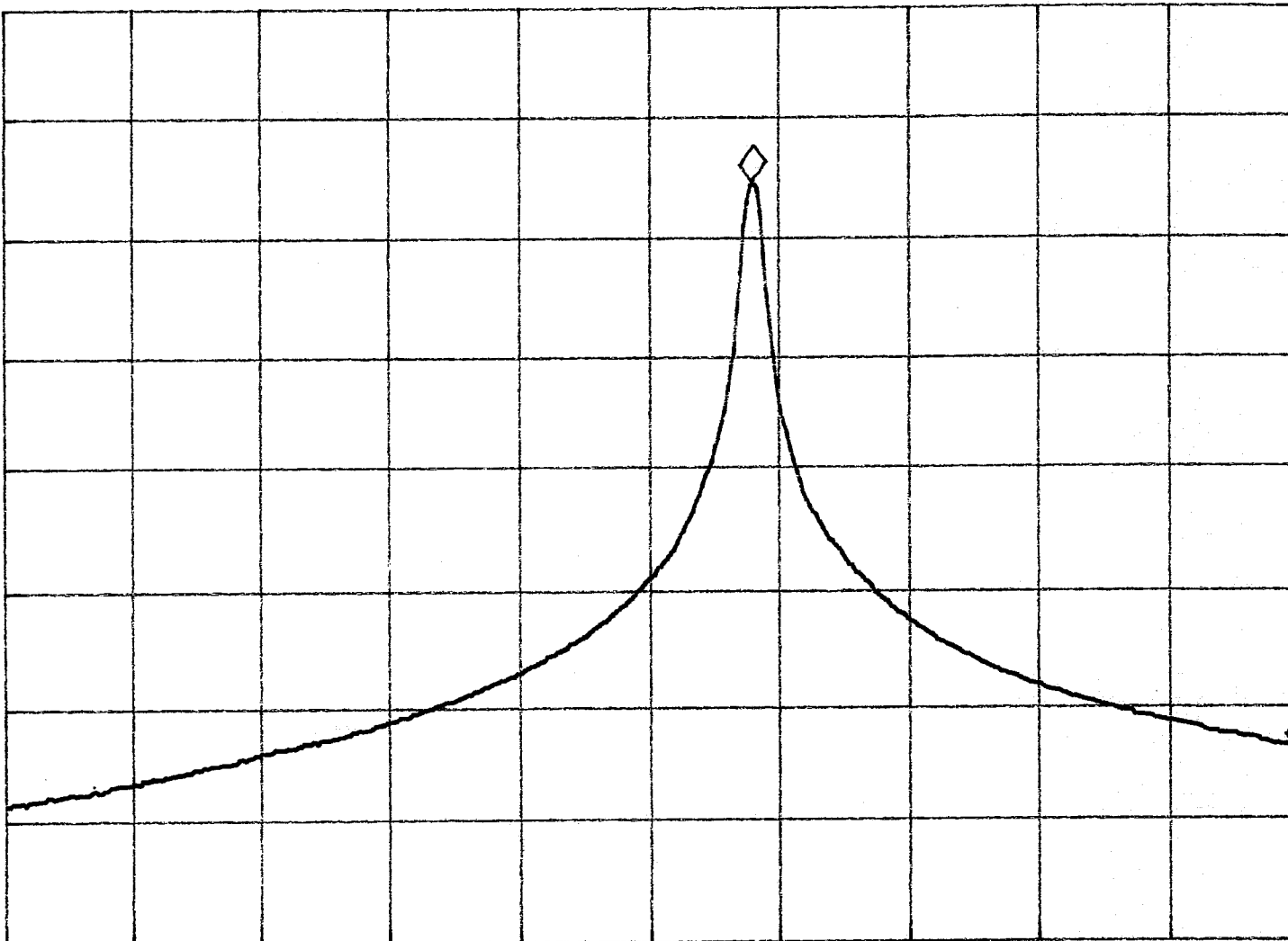
REF 97.0 dB μ V

AT 10 dB

MKR 134.4 KHz

-48.53 dB

PEAK
LOG
10
dB/



VA SB
SC FC
CORR

Tested By: *JK*
(*Kenneth Wong*)

Date: 30/12/03

Checked By: *[Signature]*
(*John*)

Date: 30/12/03

Test Result: Pass / Fail / NA

START 26.9600 MHz

#RES BW 3.0 KHz

VBW 3 KHz

STOP 27.2800 MHz

#SWP 2.00 sec