

6

5

4

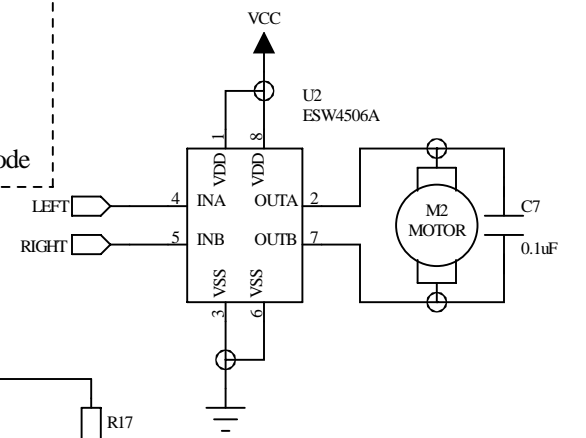
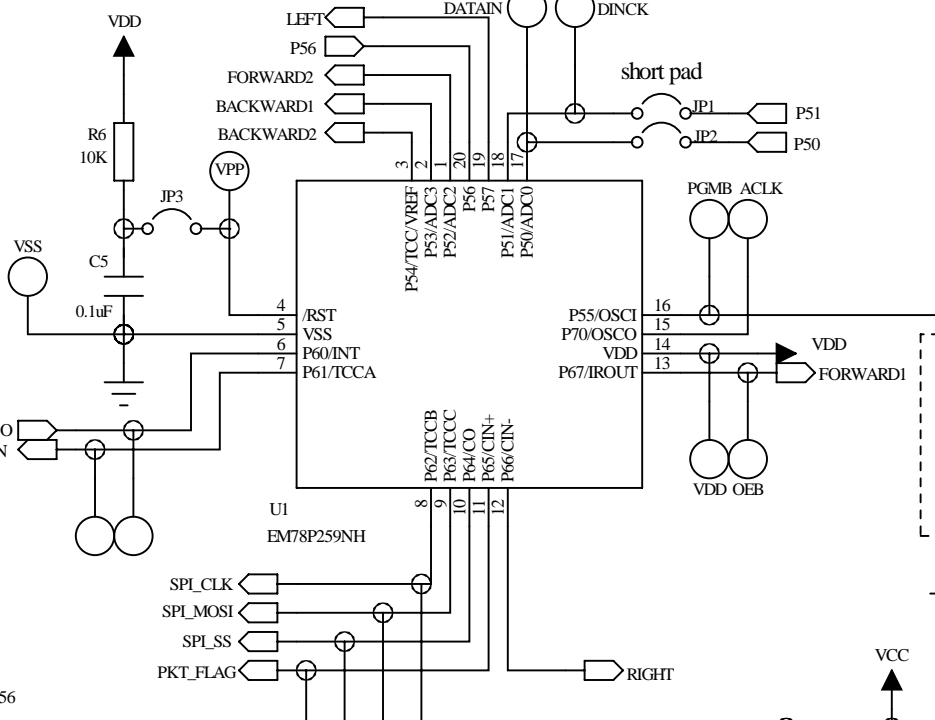
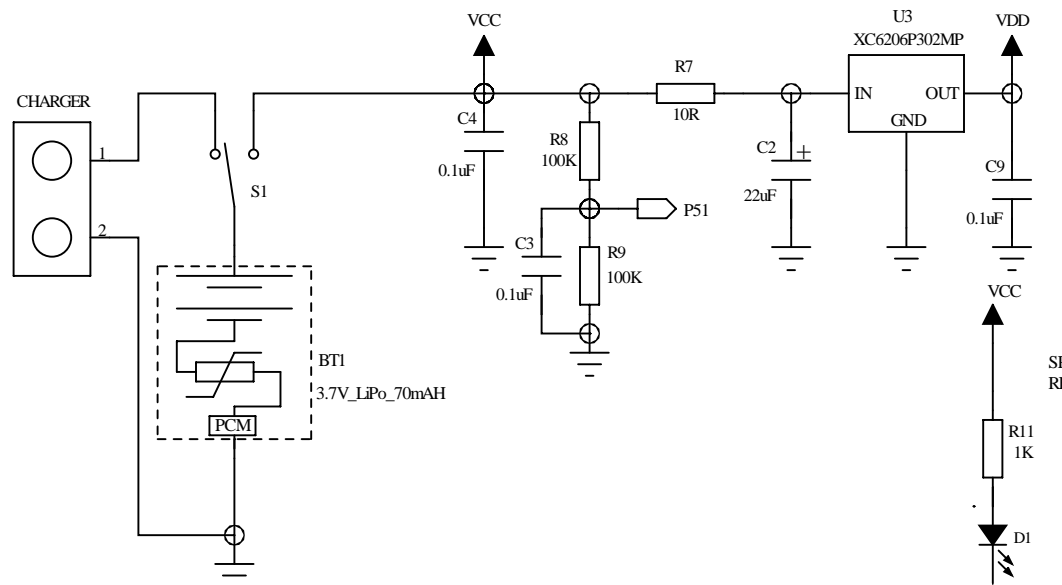
3

2

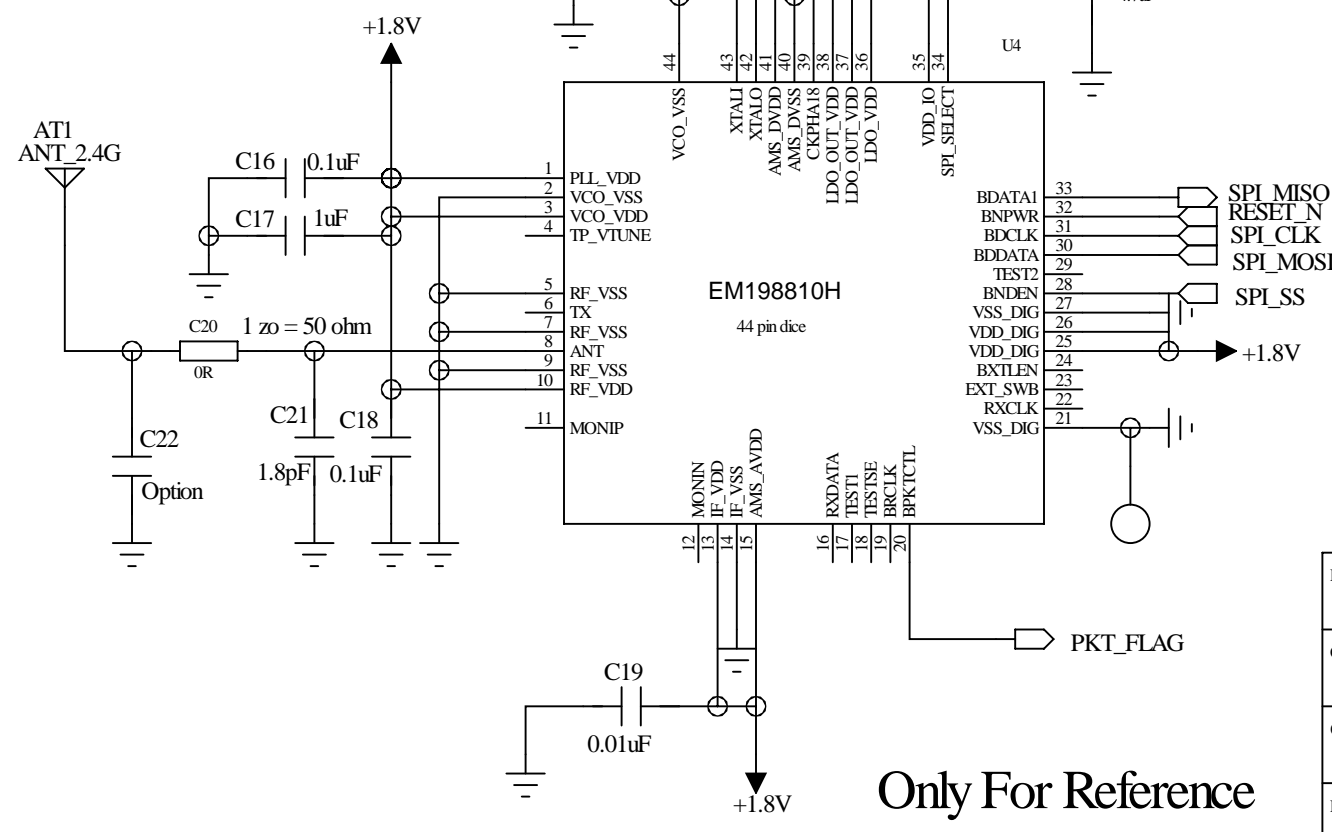
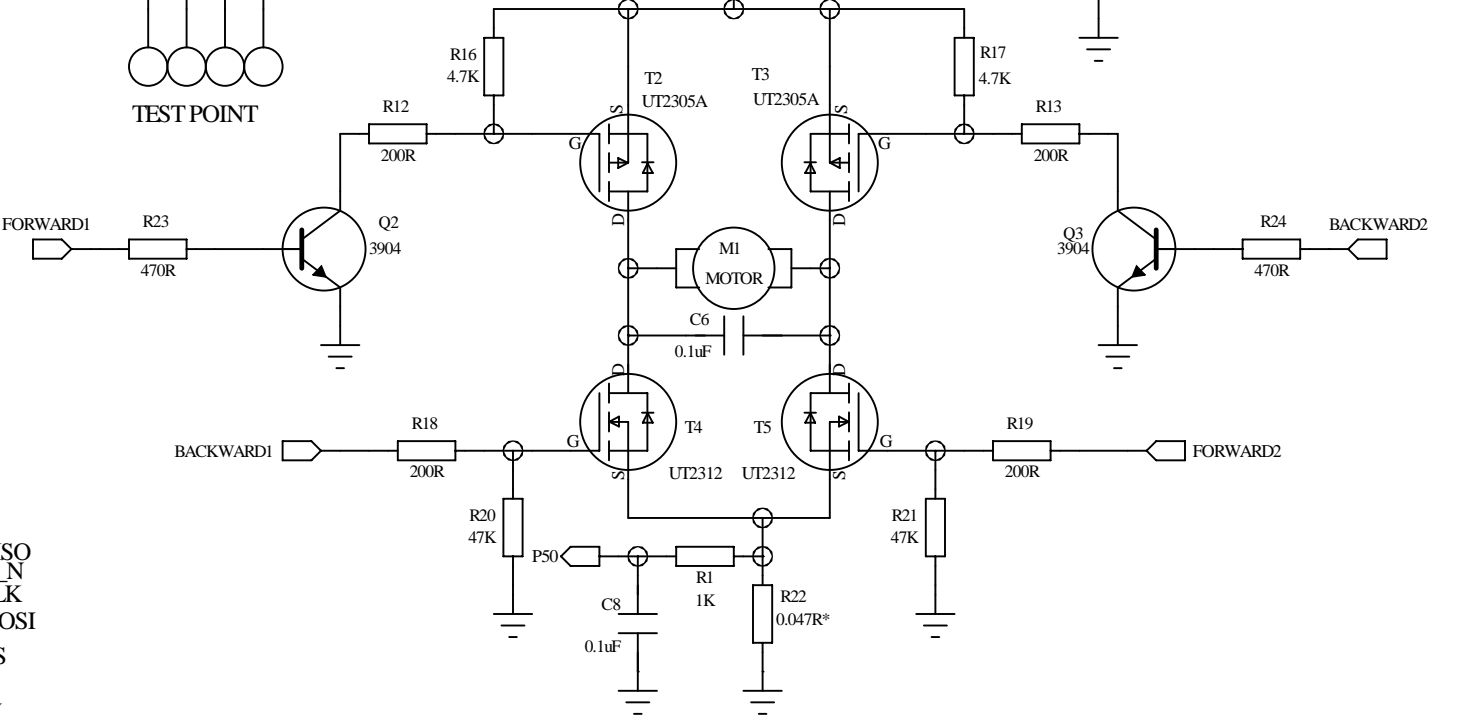
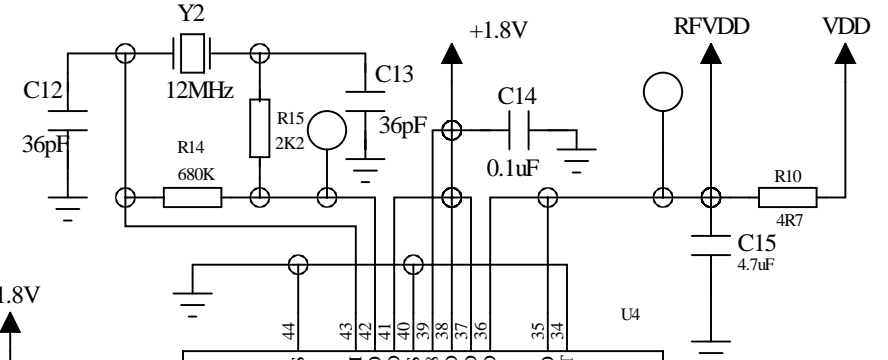
1

REVISION RECORD			
LTR	ECO NO:	APPROVED:	DATE:

Note,EM78P259NH otp programing pins:VDD VSS VPP ACLK DATAIN PGMB OEB DINCK



C13,C12:depend on the Y1 load capacitance +OSCO/OSCI pad of PCB capacitance

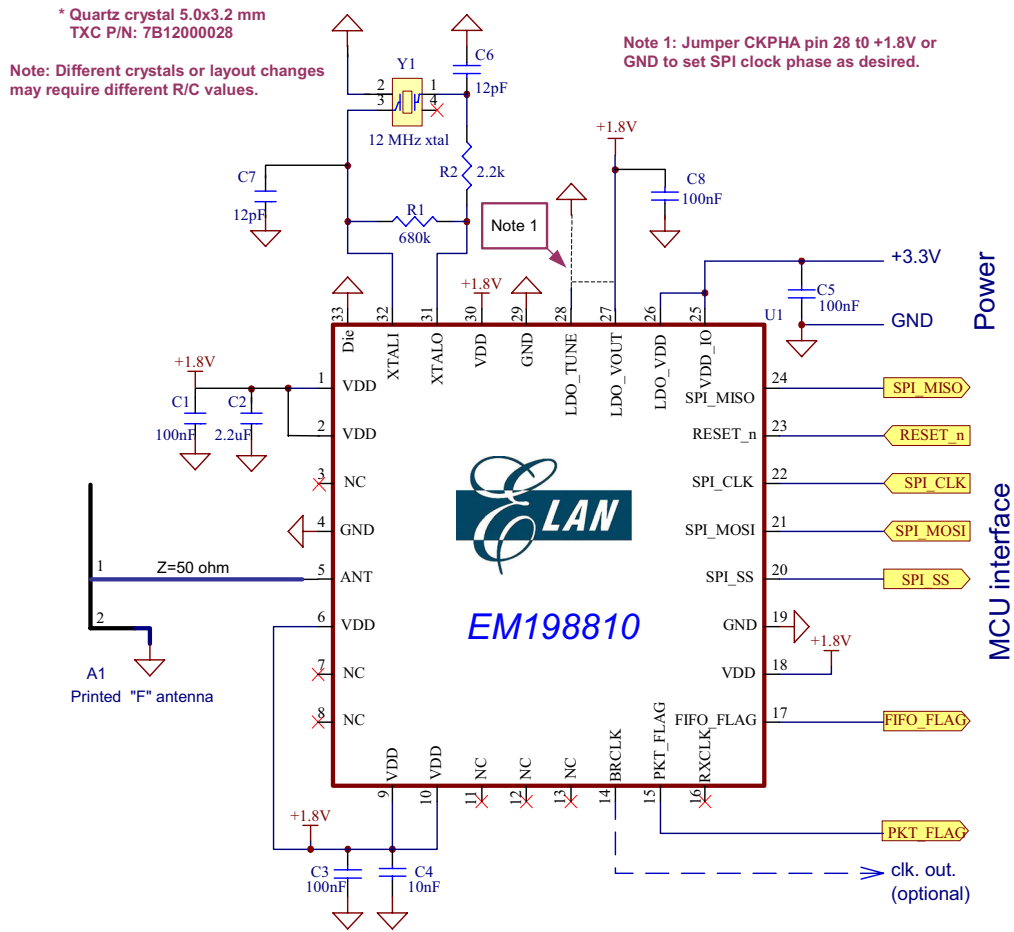


Only For Reference

COMPANY: WAILLY TECHNOLOGY LTD.			
TITLE: 2.4G RC CAR RX			
DRAWN: HYB	DATED: 2011-03-08	CODE:	REV: 2.0
CHECKED:	DATED:	SIZE:	DRAWING NO:
QUALITY CONTROL:	DATED:	SHEET: OF	
RELEASED:	DATED:	SCALE:	

6. Application Circuit

Typical Application



- Figure 6 -

BOM list

Comment	Description	Designator	Quantity	Footprint
10pF	Capacitor	C8	1	SMD-0603
12pF	Capacitor	C9	1	SMD-0603
10nF	Capacitor	C6	1	SMD-0603
100nF	Capacitor	C1 C3 C5 C7	4	SMD-0603
2.2uF	Capacitor	C2	1	SMD-0603
0 ohm	Resistor	R4	1	SMD-0603
2.2k	Resistor	R2	1	SMD-0603
680k	Resistor	R1	1	SMD-0603
12MHz	Crystal	Y1	1	OSC 5x3.2
EM198810	IC	U1	1	QFN 32 5x5
CON1x14	Connector	P1	1	HDR1x14

- Table 7 -