

Report No.: 0506939
Model No.: 14127

hp Pursuant to FCC Part 15 Section 15.227 Emissions Requirement

MKR 135.2 kHz

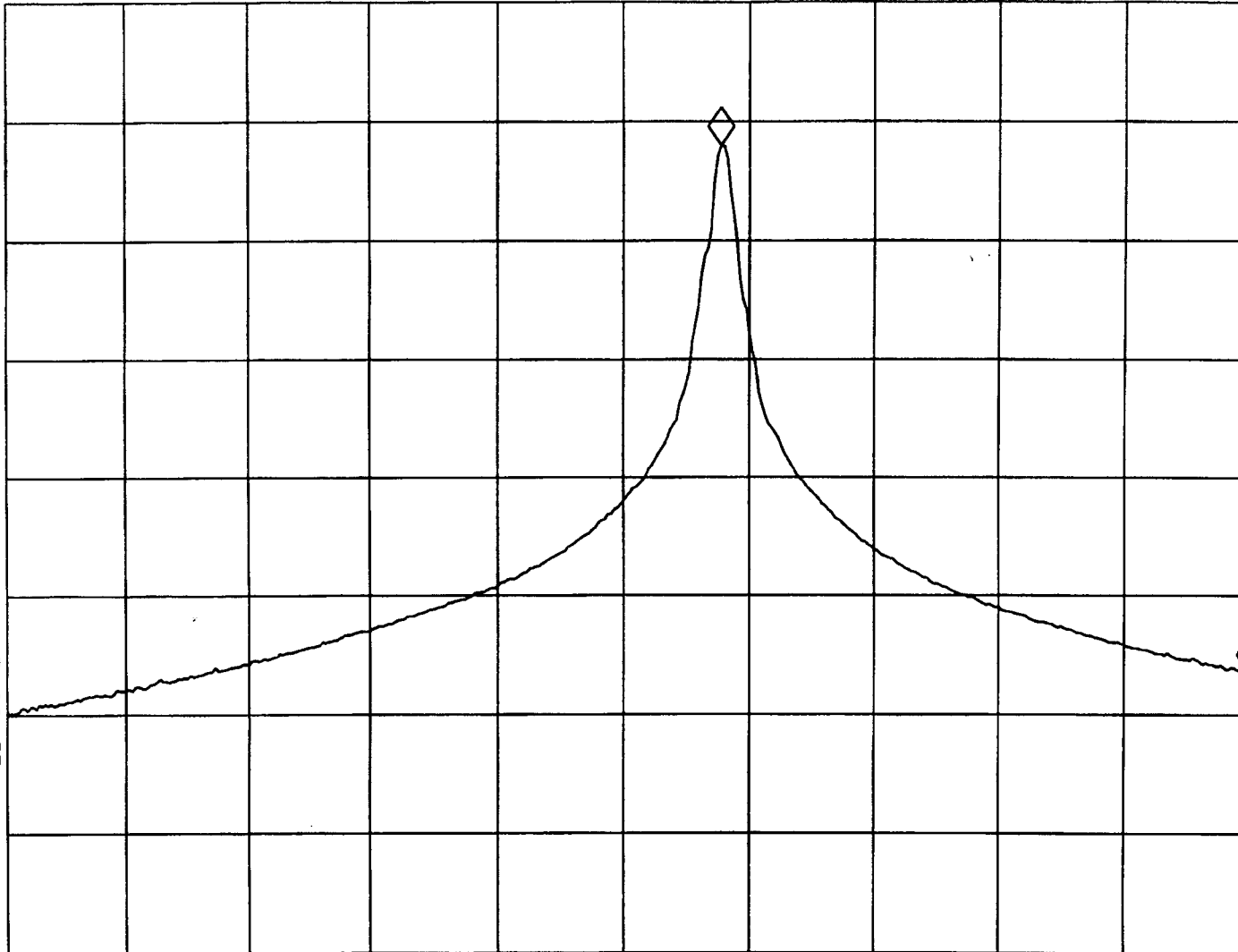
REF .0 dBm

AT 10 dB

-44.56 dB

PEAK
LOG
10
dB/

VA SB
SC FC
CORR



Tested By: KW
(Kenneth Wong)

Date: 15/4/05

Checked By: [Signature]
(Anthony Chan)

Date: 20/4/05

Test Result : Pass / Fail / NA

START 26.9600 MHz

STOP 27.2800 MHz

#RES BW 3.0 kHz

#VBW 3 MHz

#SWP 1.00 sec