

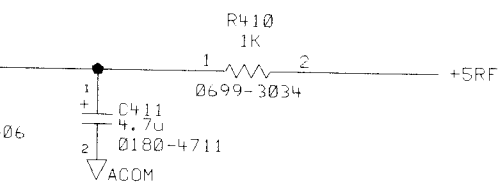
Note 2: If power is < 4dBm
change R472 to 31.6
(HP P/N 0699-3020)

— PL_CLK

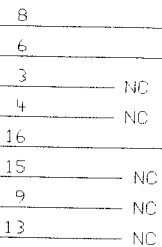
— PL_DATA

— PL_EN

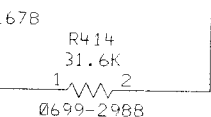
— CLKB



2 — LOCK_DET




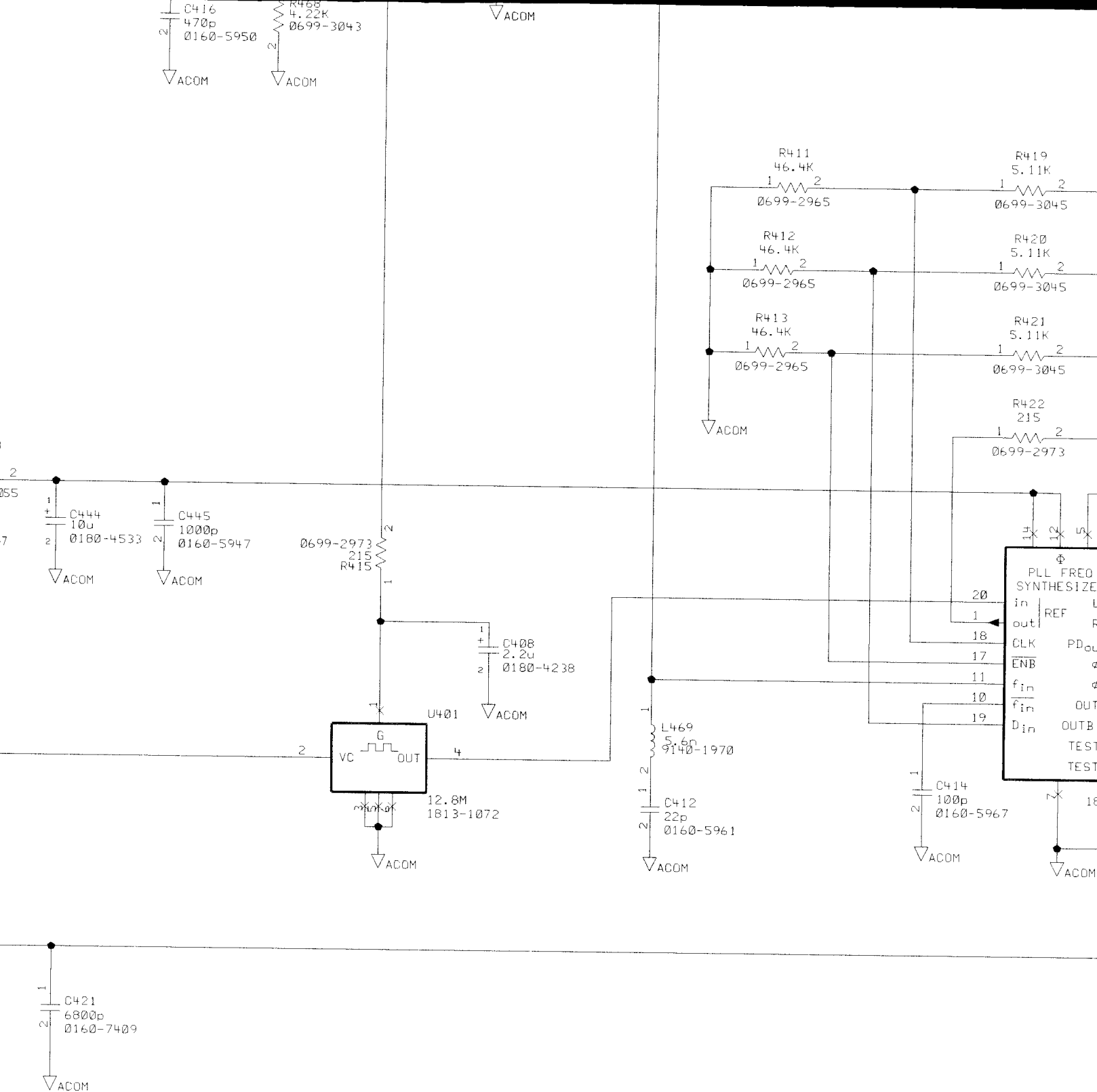
OUT_A



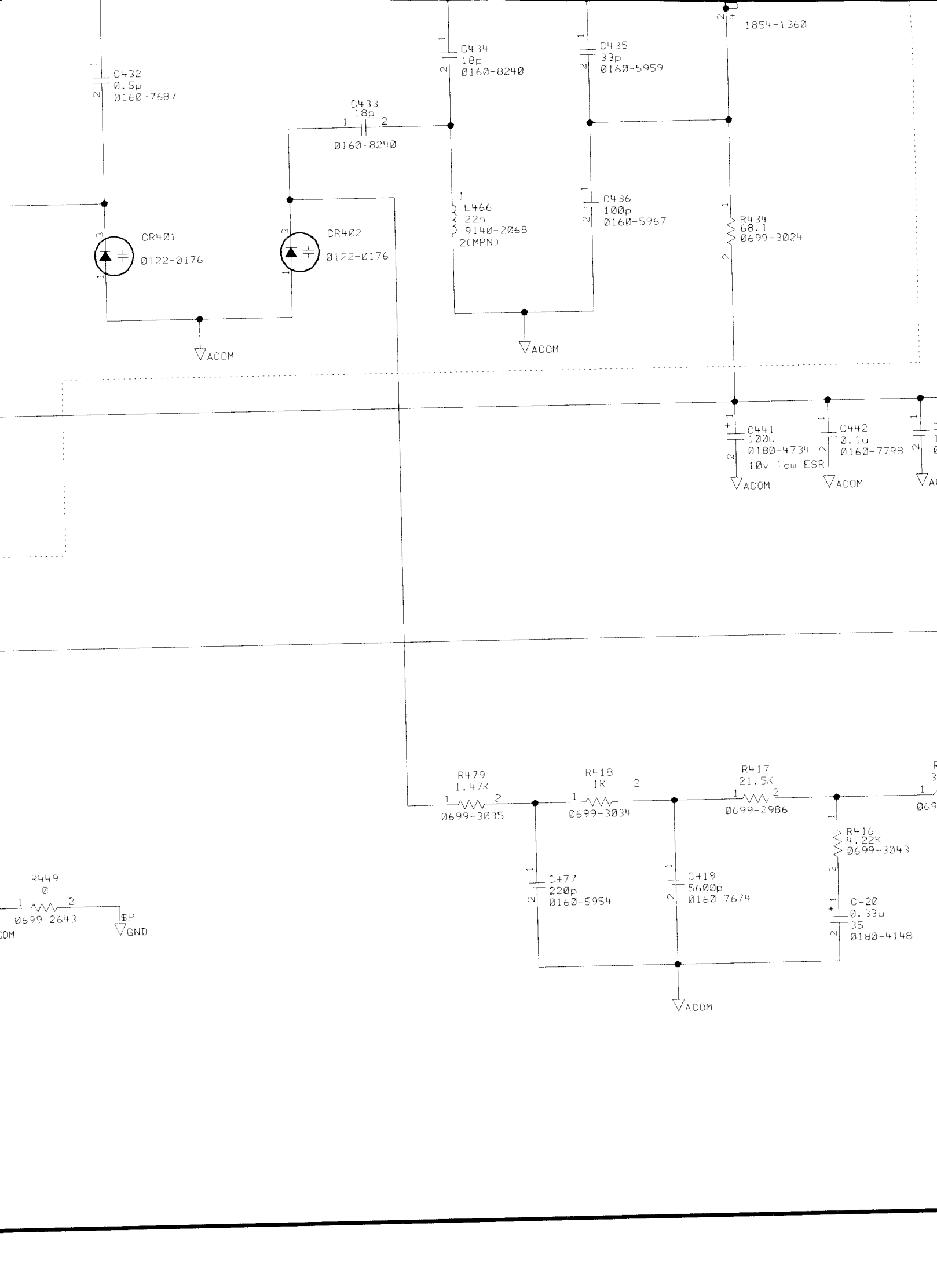
PROPRIETARY

CONTAINS CONFIDENTIAL
INFORMATION THAT IS
HEWLETT (HP) PROPERTY.
DO NOT REPRODUCE OR DUPLICATE FOR
OTHERS WITHOUT AS AUTHORIZED BY HP.

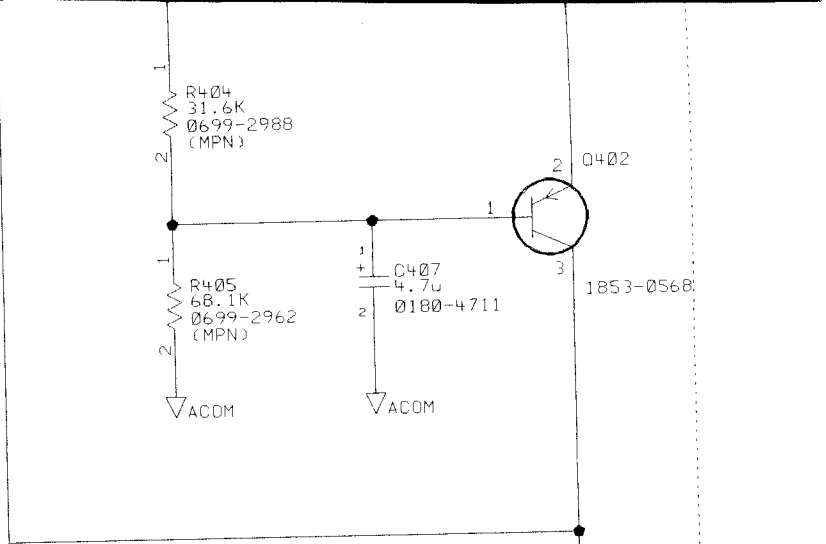
6/4/98 09:10:43 LAST CHECKED	7/10/97 DATE	SCHEMATIC. PCB TUHFMAN RF SYNTHESIZER SECTION		 HEWLETT PACKARD 2917
DELROY SMITH ENGINEER	SHEET 4 OF 4	TITLE		
G. KAGER DRAWN BY	SIZE D	\$M2601-60070_schem_D/pc_board sheet4 PATHNAME		M2601-60070 PART NUMBER
ASSY. REV	BRD. REV	PAGE 4 OF 4	D-M2601-90070 DWG. NO.	



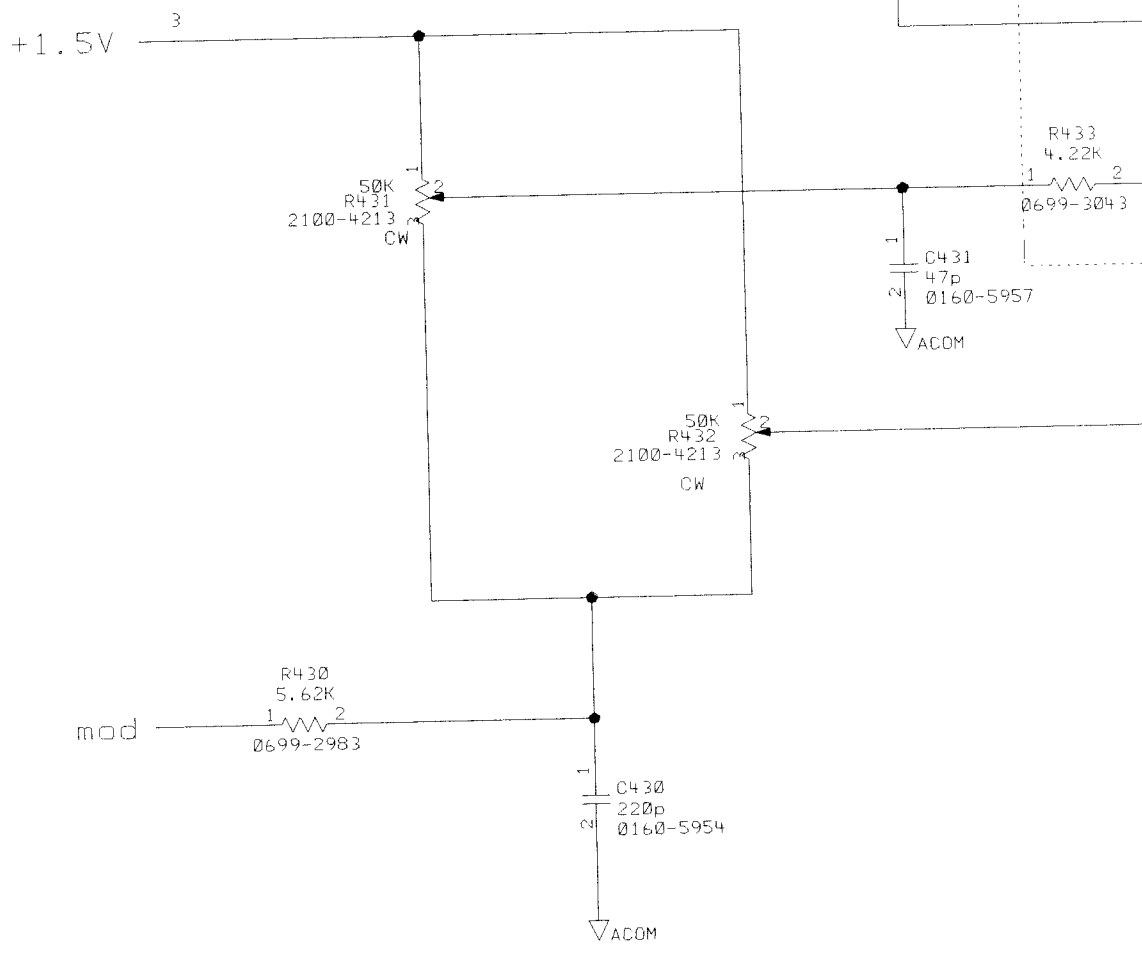
HP
 THIS DOCUMENT IS
 PROPRIETARY
 HEWLETT-
 PACKARD
 DO NOT DISCLOSE
 TO OTHERS EXCEPT
 BY WRITTEN
 PERMISSION



D



E



F

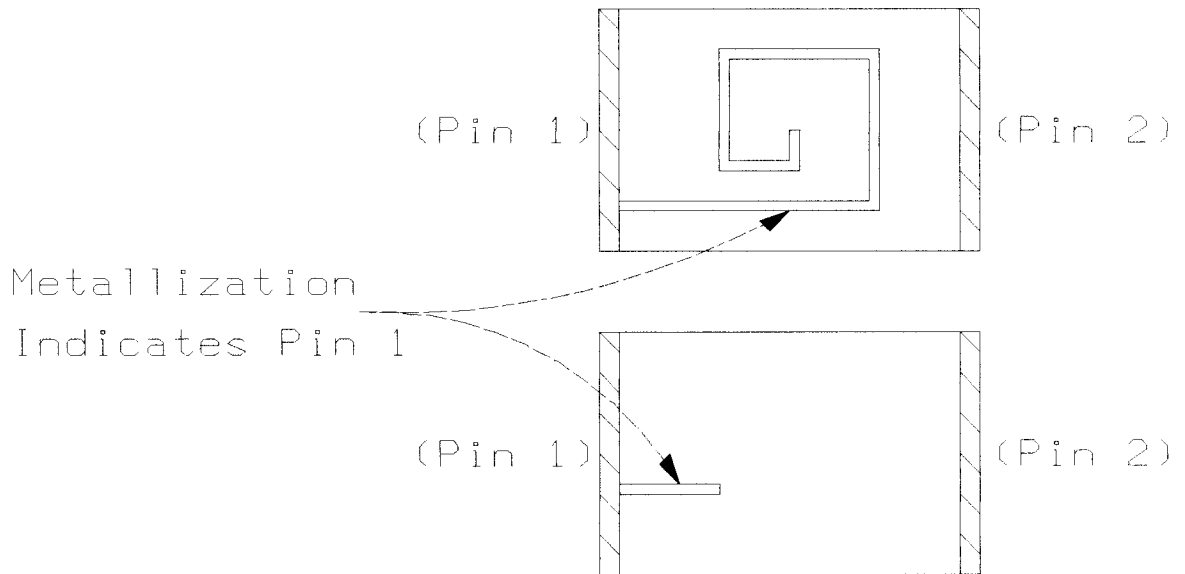
7/10/97

8
D-M2601-90070

REV	INFORMATION	APPROVED	DATE
D	37711 See sheet 1.	DARIO MCEWEN	6/4/98

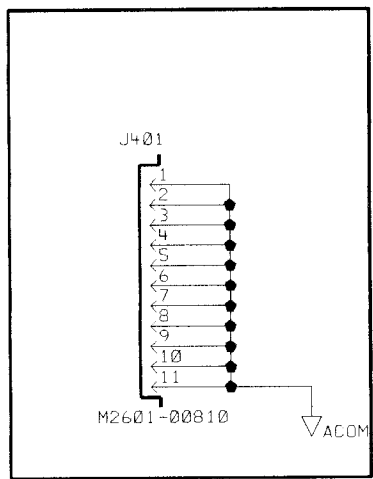
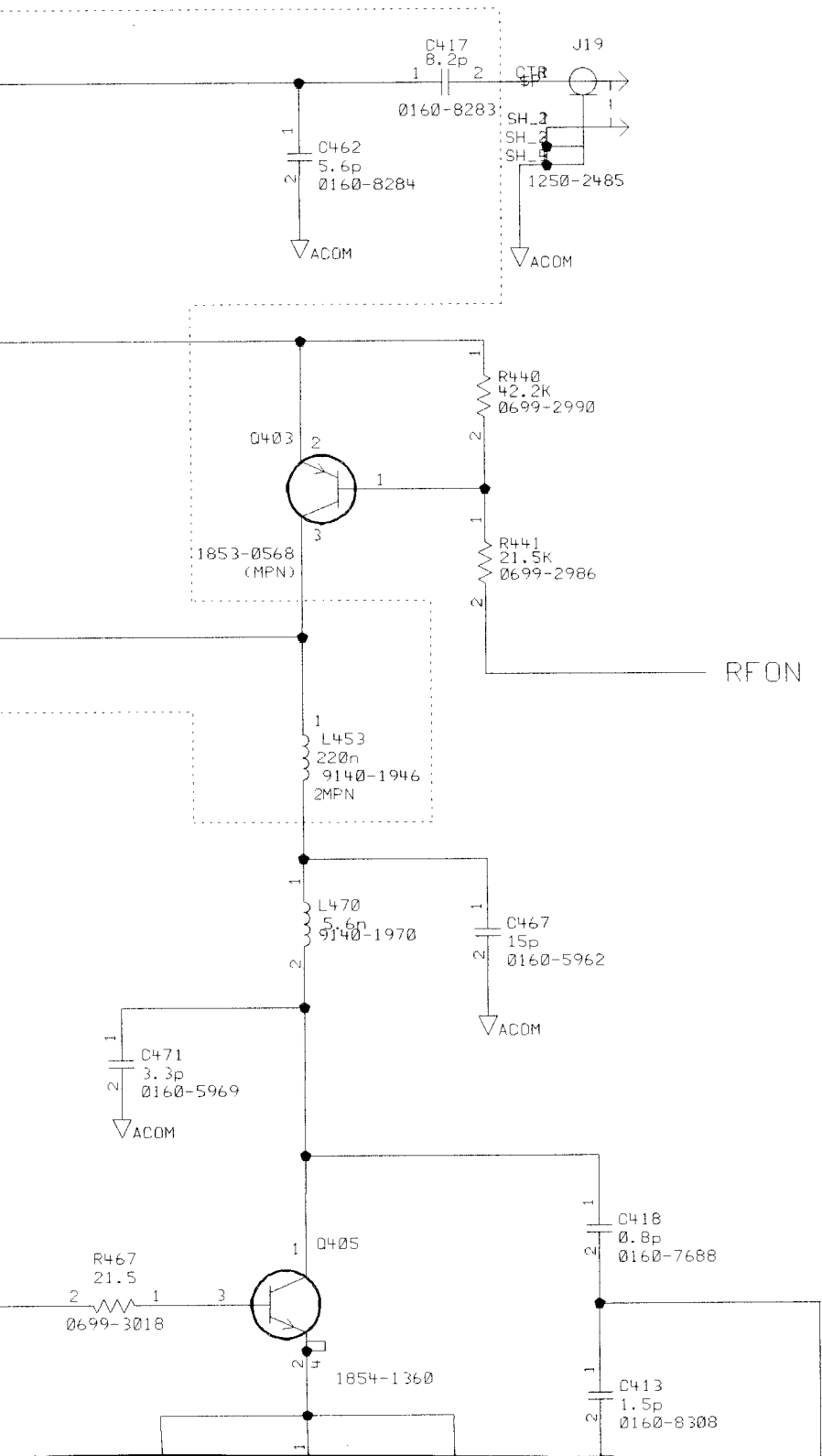
e for Shield

Sample Top Views of
AVX Inductors



Note: L454, L461, L462, L93
L467, L469, L470 Are
Orientation Sensitive.

L454; L461, L462, And L467
Will Effect Power Output.



Fenc

Extent of RF Fence

