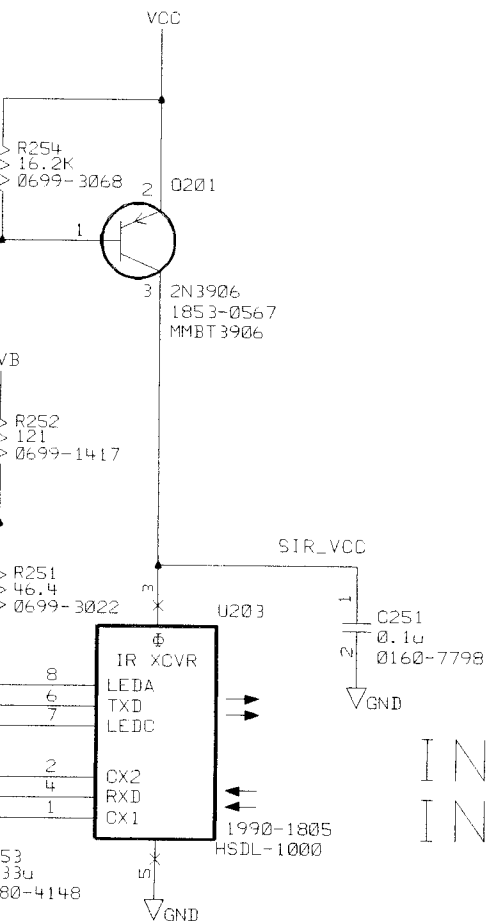


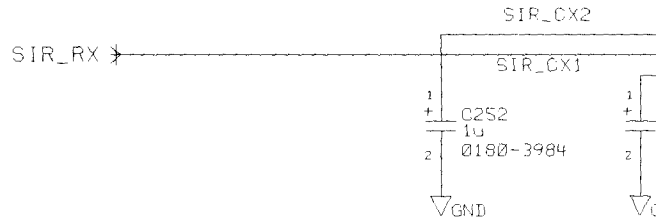
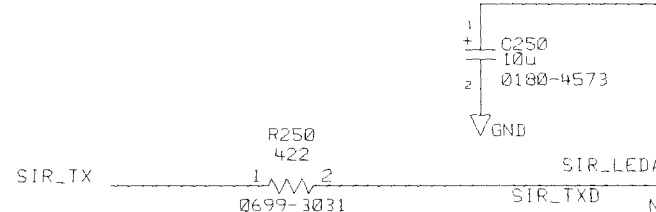
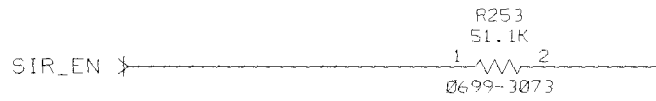
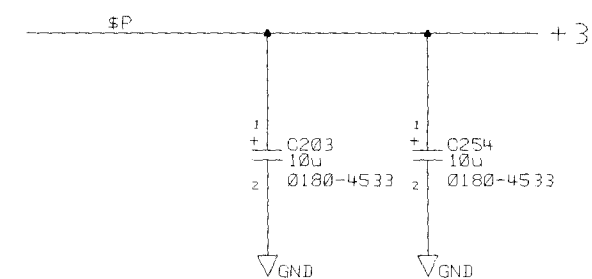
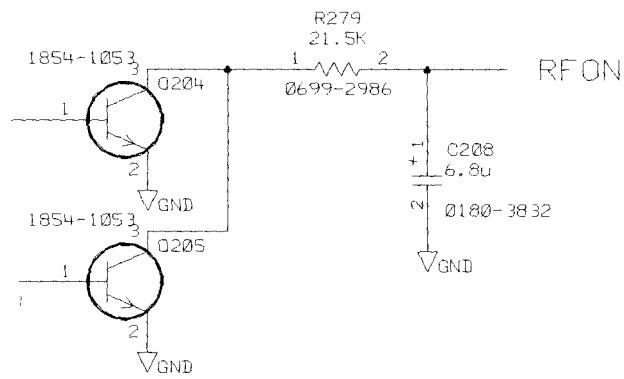
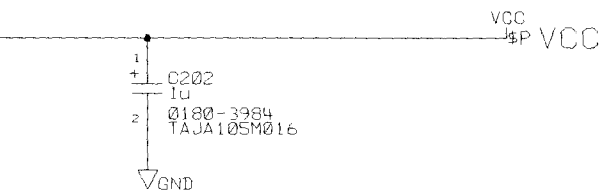
7/10/97

8  
D-M2601-90070

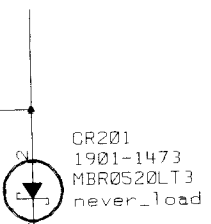
REV	INFORMATION	APPROVED	DATE
D	37711 See sheet 1.	DARIO MCEWEN	6/4/98



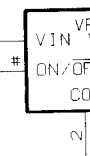
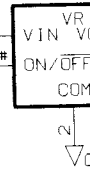
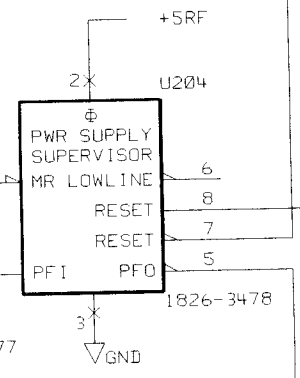
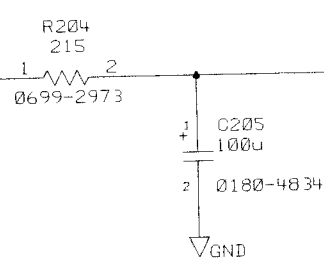
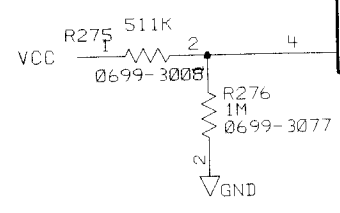
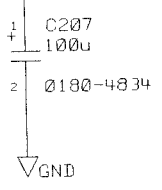
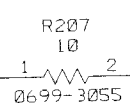
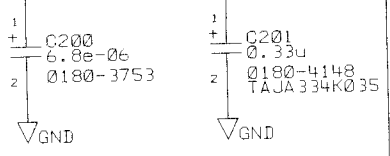
INFRARED  
INTERFACE



+VTELP

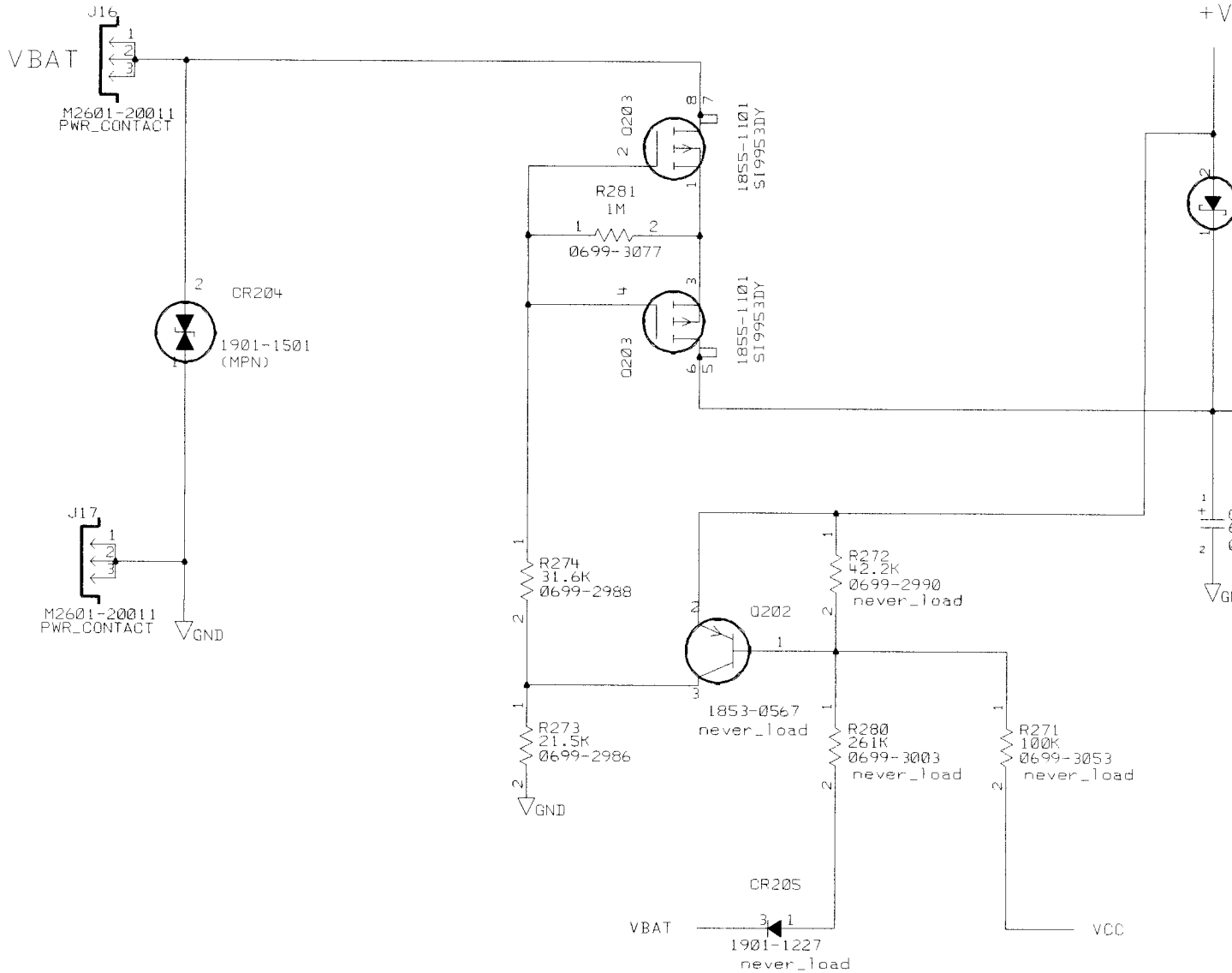


+VB  
3



R219  
46.4K

LED




TO TELPORT

1252-6543  
1252-6543  
1252-6543  
1252-6543  
1252-6543  
1252-6543  
1252-6543  
1252-6543  
1252-6543

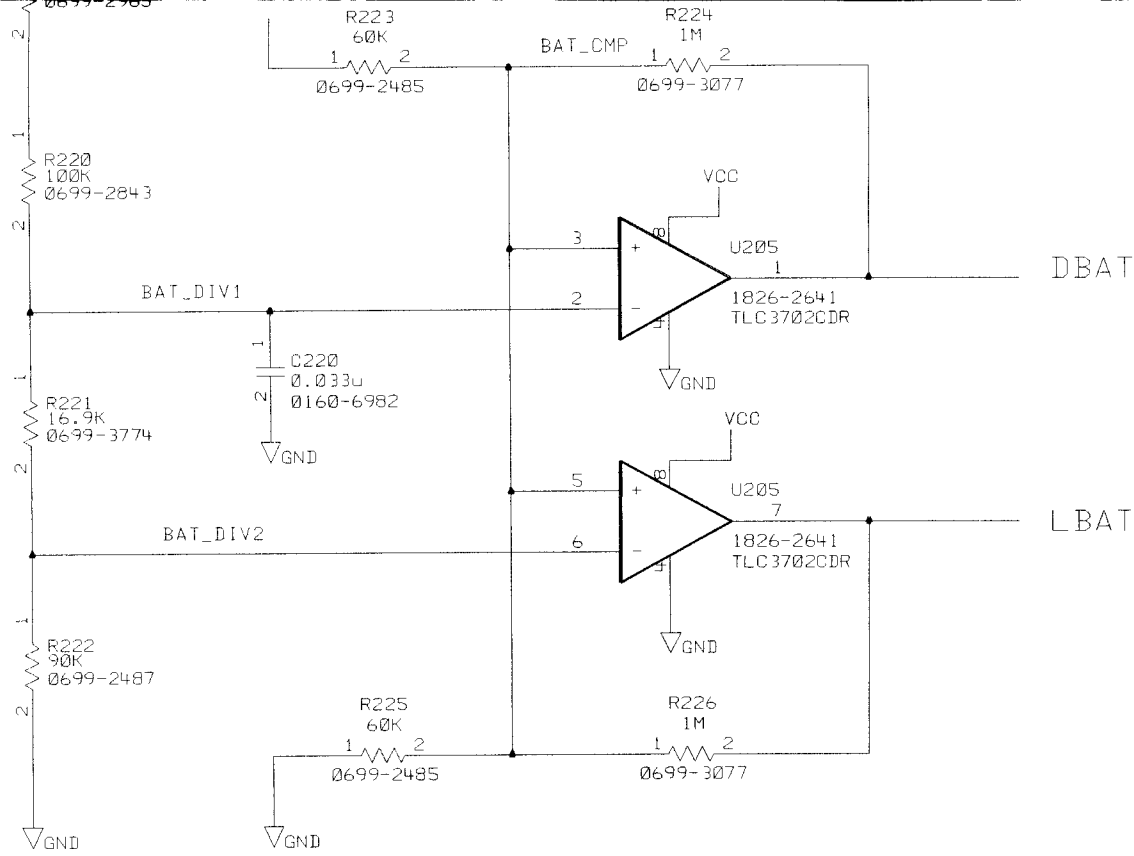


never\_load

CONFIDENTIAL  
PROPERTY OF  
HEWLETT-PACKARD  
REPLICATED BY HP.

6/4/98 09:05:34 LAST CHECKED	7/10/97 DATE	SCHEMATIC, PCB TUHFMAN		 HEWLETT PACKARD 2917
DELROY SMITH ENGINEER	SHEET 3 OF 4	POWER SEQUENCING SECTION		
G. KAGER DRAWN BY	SIZE D	TITLE #M2601-60070_schem_D/pc_board sheet 3 PATHNAME	M2601-60070 PART NUMBER	
ASSY. REV	BRD. REV	PAGE 3 OF 4	DWG. NO. D-M2601-90070	





BATTERY  
VOLTAGE  
DETECTOR

