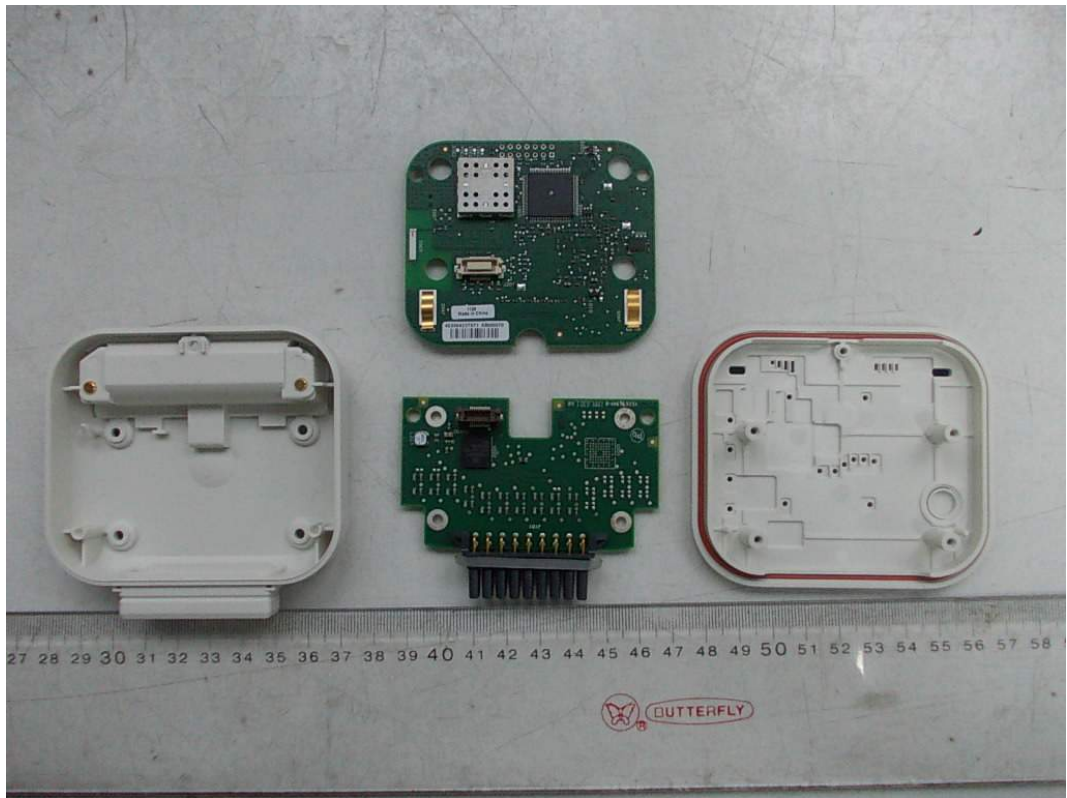
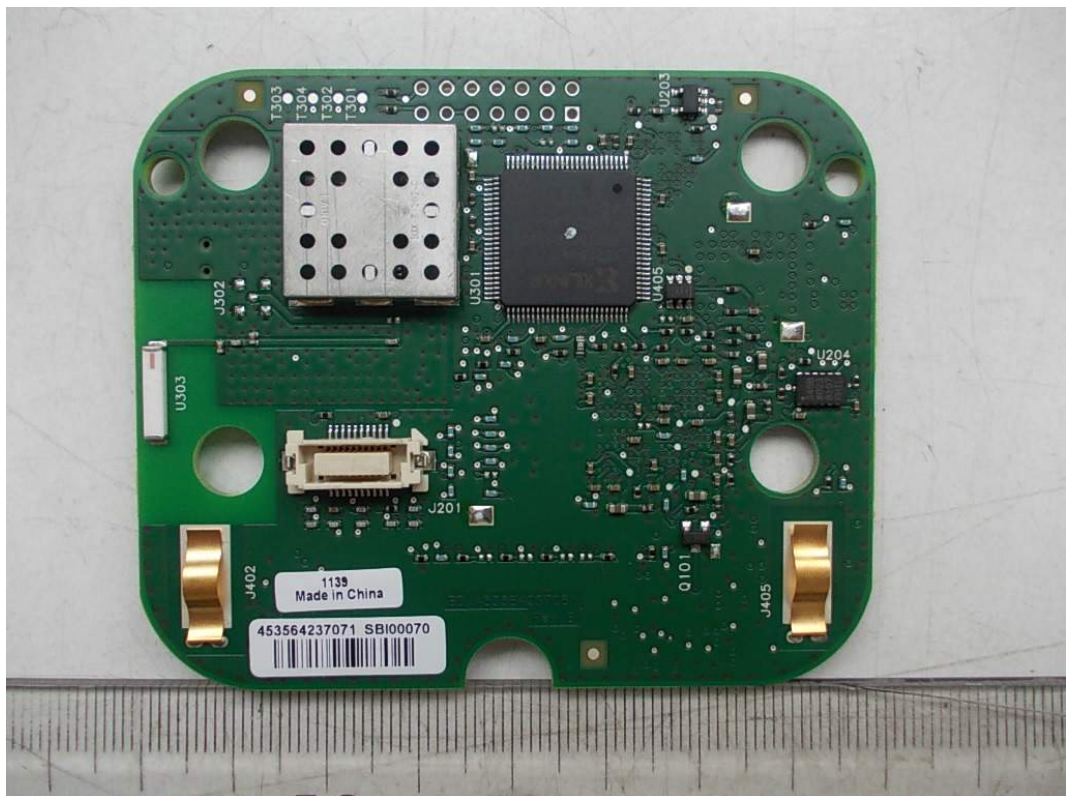


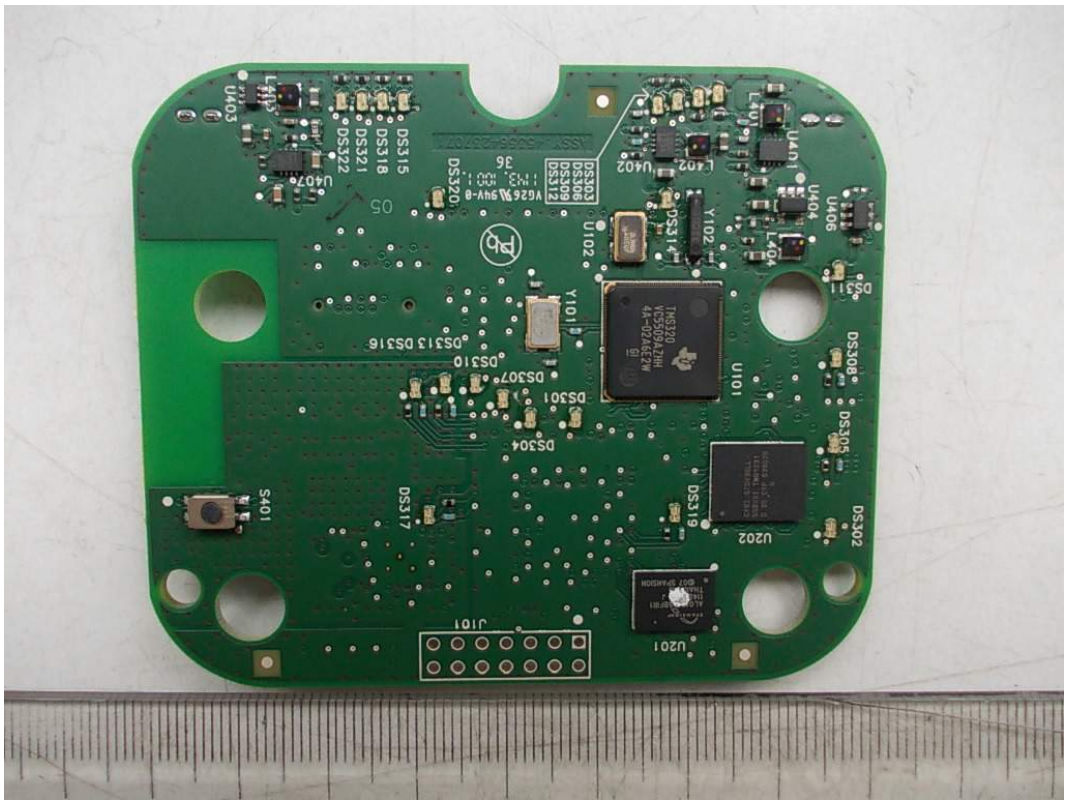
*FIGURE 1  
PATIENT INTERFACE MODULE (M/N: ST80i WPIM)  
COVER REMOVED*



*FIGURE 2  
PATIENT INTERFACE MODULE (M/N: ST80i WPIM)  
MAIN BOARD (FRONT VIEW)*



*FIGURE 3  
PATIENT INTERFACE MODULE (M/N: ST80I WPIM)  
MAIN BOARD (BACK VIEW)*



*FIGURE 4  
PATIENT INTERFACE MODULE (M/N: ST80I WPIM)  
CHIP & CRYSTAL ON MAIN BOARD*

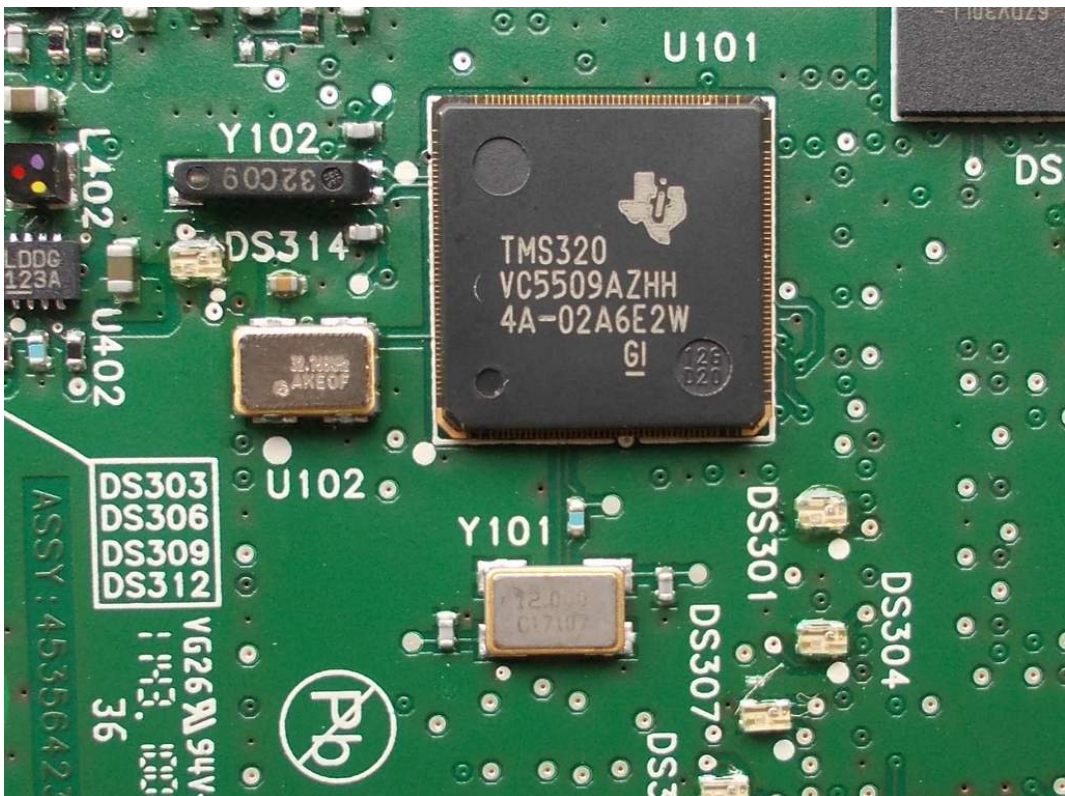




FIGURE 5  
PATIENT INTERFACE MODULE (M/N: ST80I WPIM)  
RF MODULE ON MAIN BOARD

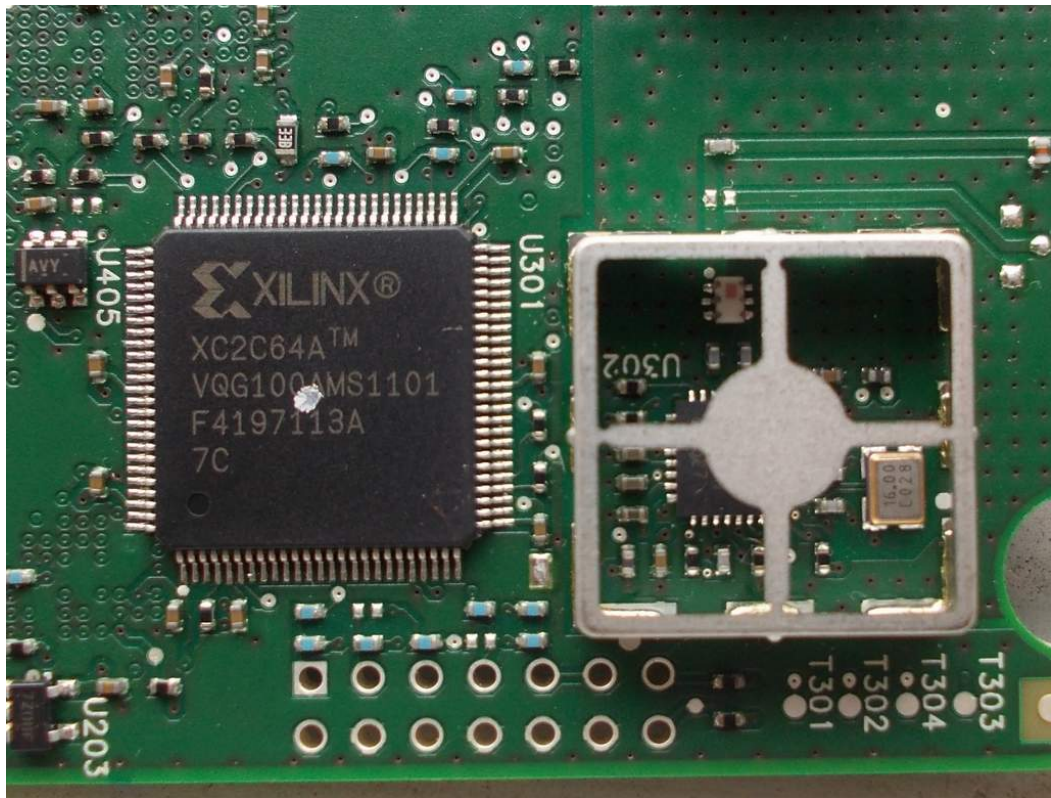
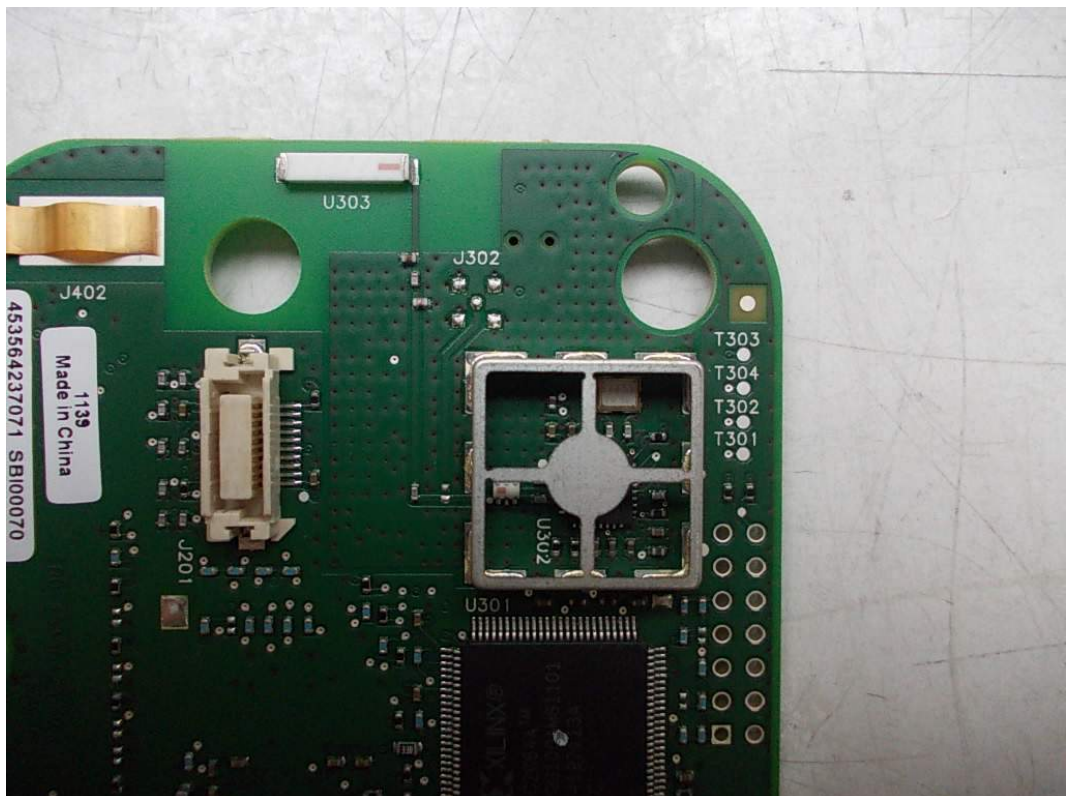
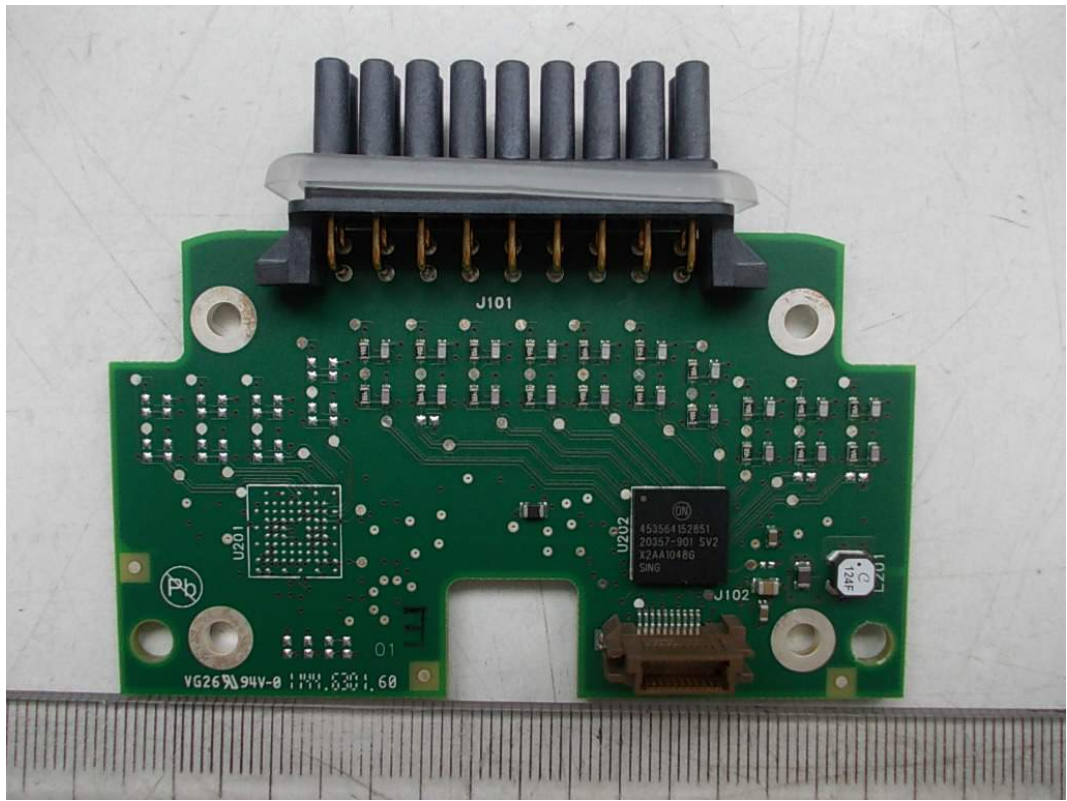


FIGURE 6  
PATIENT INTERFACE MODULE (M/N: ST80I WPIM)  
ANTENNA ON MAIN BOARD



*FIGURE 7  
PATIENT INTERFACE MODULE (M/N: ST80i WPIM)  
PORT BOARD (FRONT VIEW)*



*FIGURE 8  
PATIENT INTERFACE MODULE (M/N: ST80i WPIM)  
PORT BOARD (BACK VIEW)*

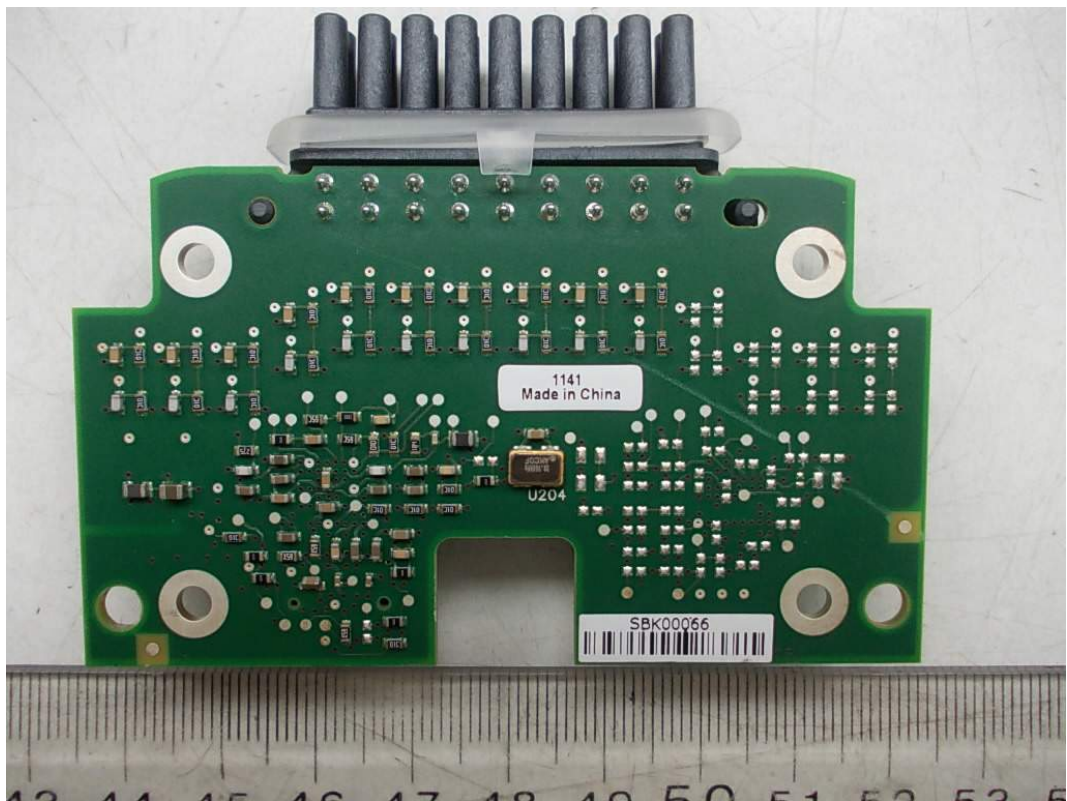




FIGURE 9  
PATIENT INTERFACE MODULE (M/N: ST80I WPIM)  
CRYSTAL ON PORT BOARD

