

## Annex C Internal photographs of the EUT

Photo documentation

Photo 7:

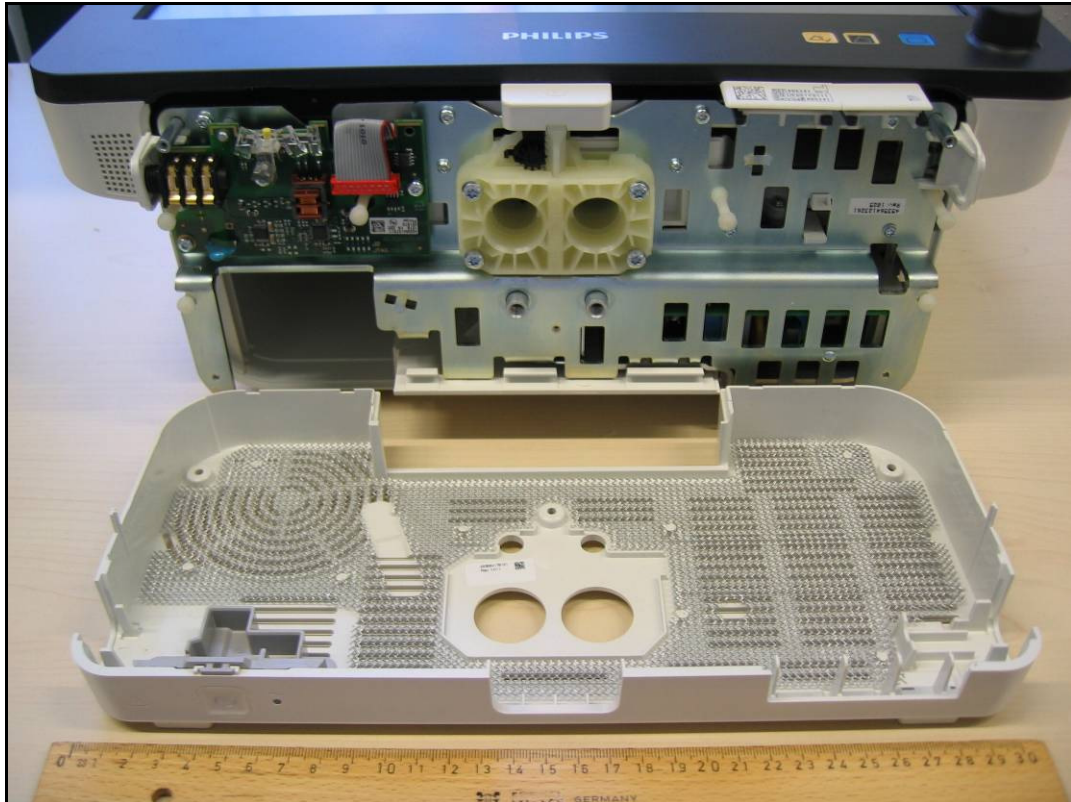


Photo 8:



Photo 9:

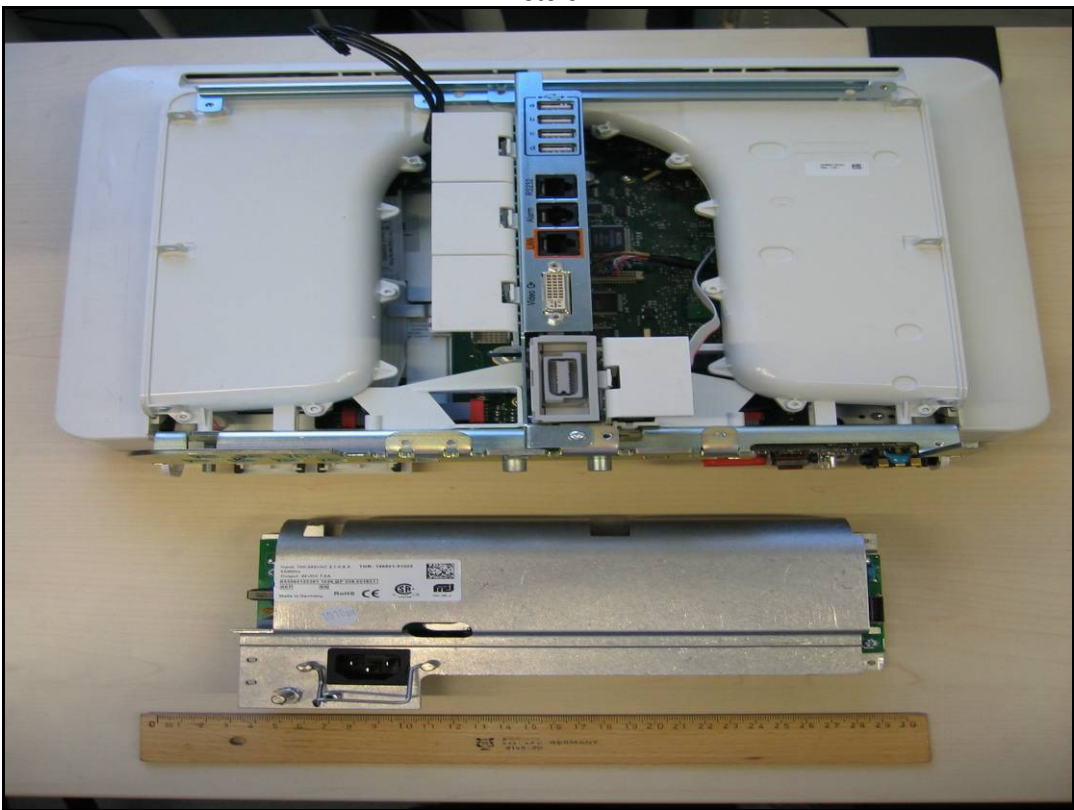


Photo 10:

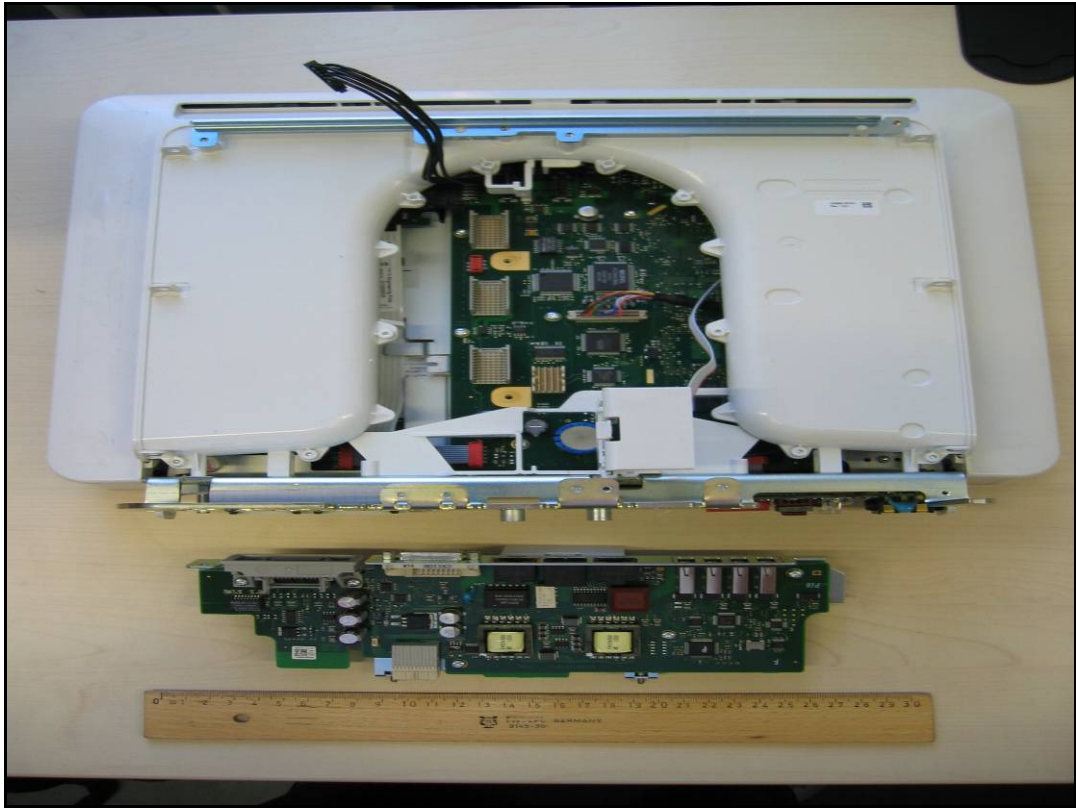


Photo 11:

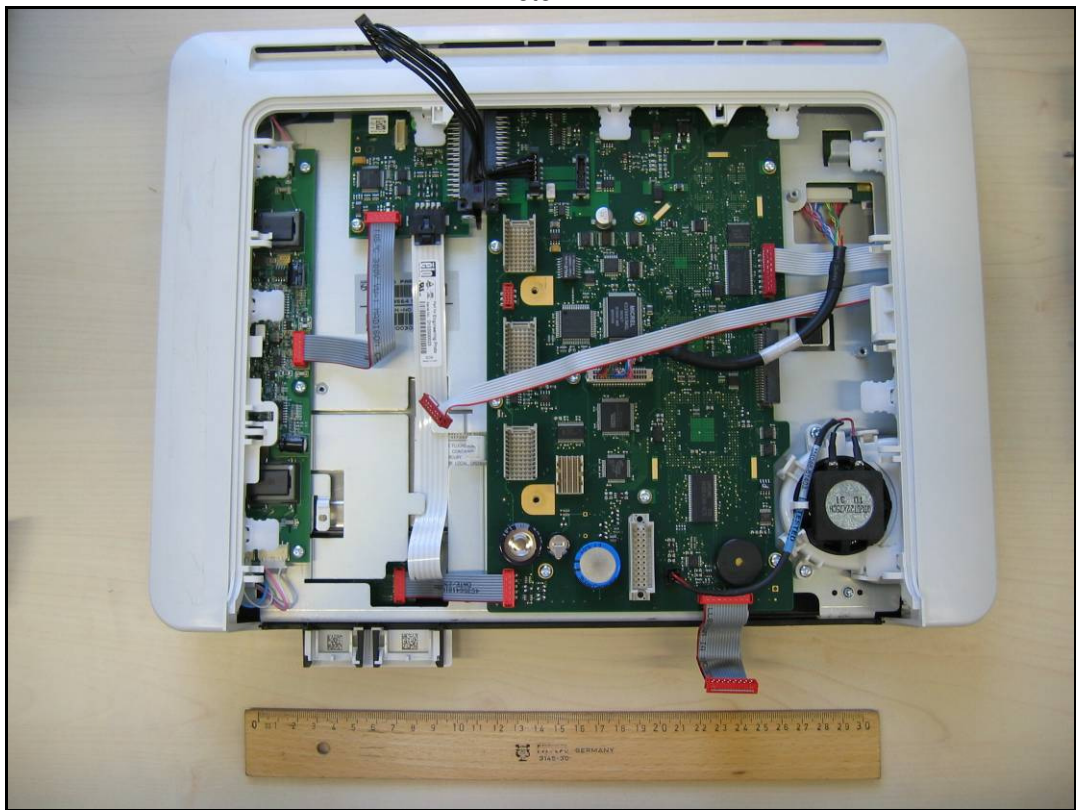


Photo 12:

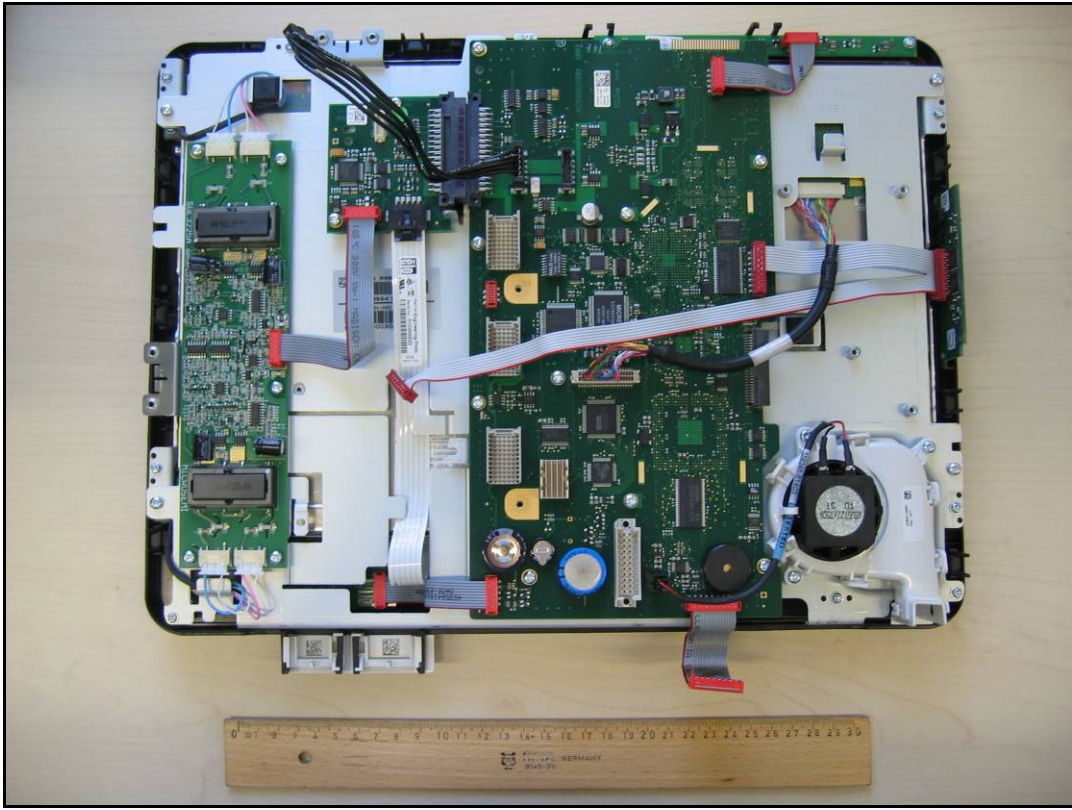


Photo 13:

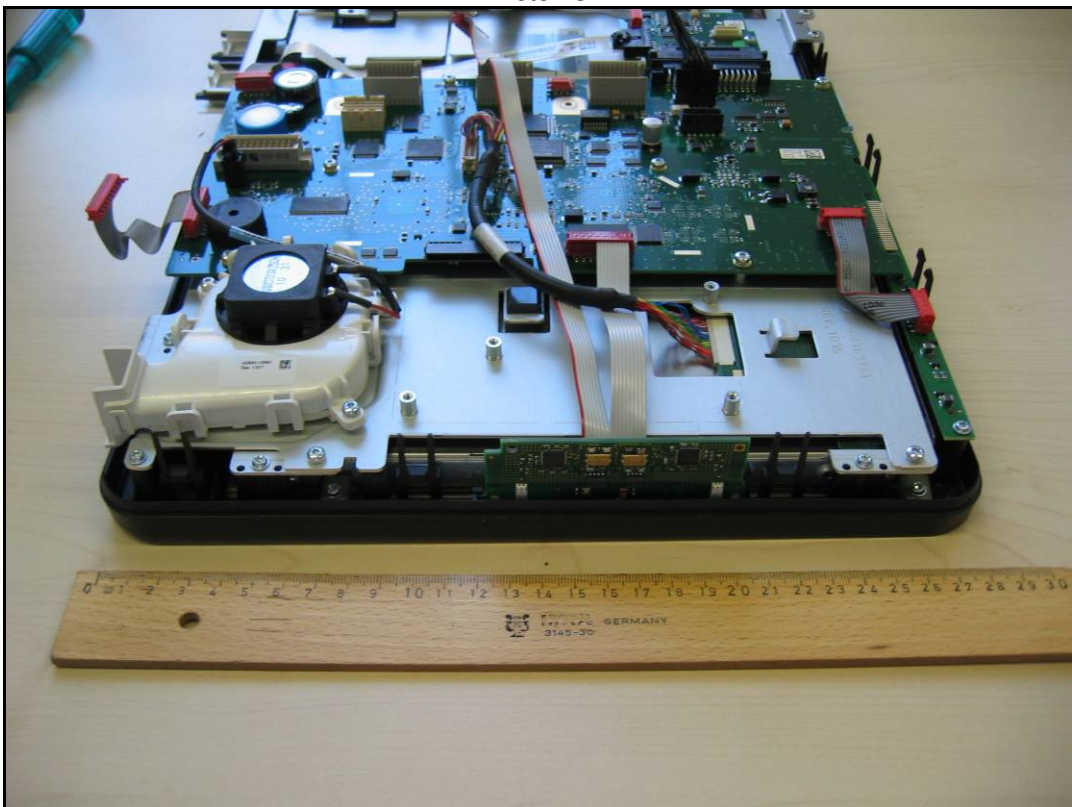


Photo 14:

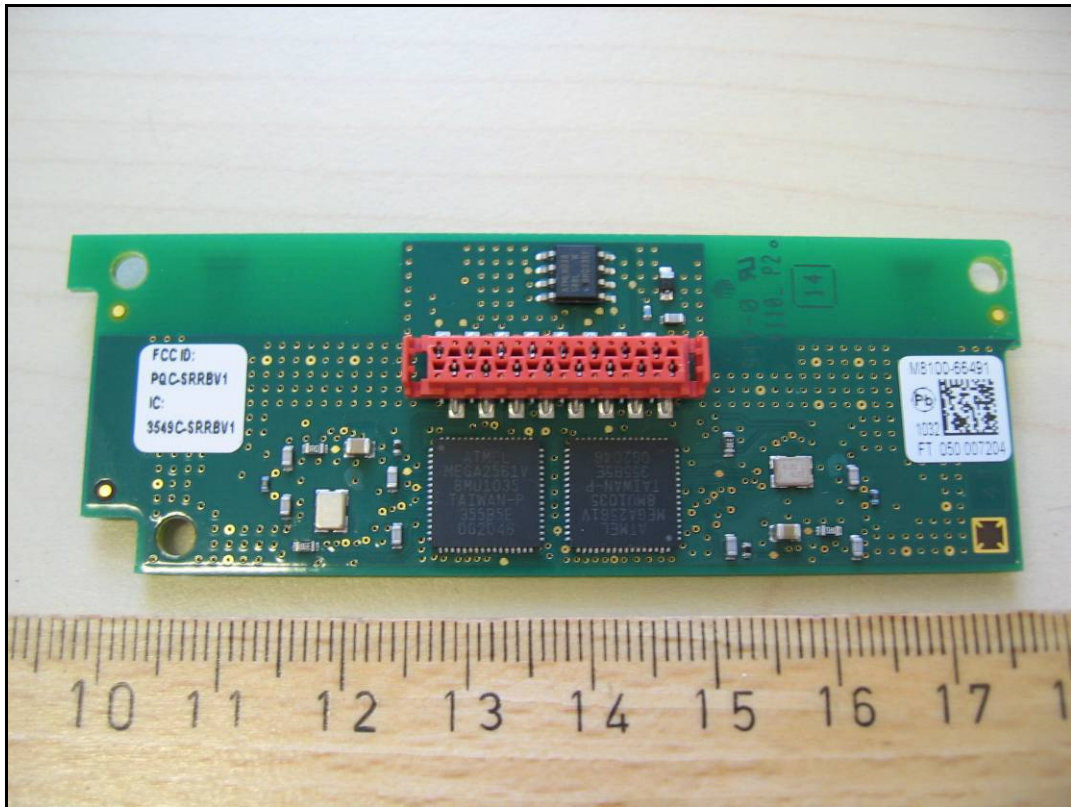


Photo 15:

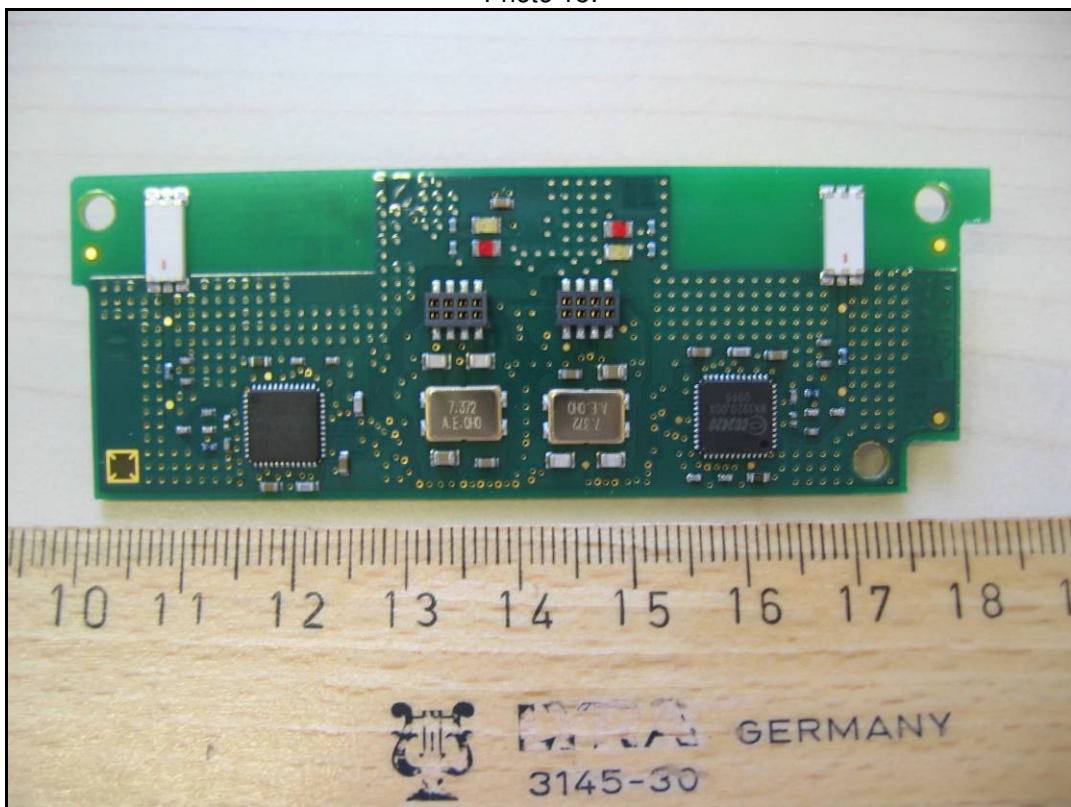


Photo 16:  
(upper RS232 Port for Transmitter 2, lower RS232 Port for Transmitter 1)

