

# HONG KONG IPRO TECHNOLOGY CO., LIMITED

## GSM Mobile Phone

**Main Model: V5**  
**Serial Model: N/A**




**November 30, 2013**

**Report No.: 13070559-FCC-E1**  
**(This report supersedes NONE)**



Modifications made to the product : None

This Test Report is Issued Under the Authority of:

		
Fly Xu Compliance Engineer	Alex Liu Technical Manager	

This test report may be reproduced in full only.  
Test result presented in this test report is applicable to the representative sample only.

# EMC Test Report

To: FCC Part 15 Subpart B Class B: 2013, ANSI C63.4: 2009

**SIEMIC, INC.**  
Accessing global markets



## Laboratory Introduction

SIEMIC, headquartered in the heart of Silicon Valley, with superior facilities in US and Asia, is one of the leading independent testing and certification facilities providing customers with one-stop shop services for Compliance Testing and Global Certifications.



In addition to [testing](#) and [certification](#), SIEMIC provides initial design reviews and [compliance management](#) through out a project. Our extensive experience with [China](#), [Asia Pacific](#), [North America](#), [European](#), and [international](#) compliance requirements, assures the fastest, most cost effective way to attain regulatory compliance for the [global markets](#).

### SIEMIC (Shenzhen-China) Laboratories Accreditations for Conformity Assessment

Country/Region	Scope
USA	EMC , RF/Wireless , Telecom
Canada	EMC, RF/Wireless , Telecom
Taiwan	EMC, RF, Telecom , Safety
Hong Kong	RF/Wireless ,Telecom
Australia	EMC, RF, Telecom , Safety
Korea	EMI, EMS, RF , Telecom, Safety
Japan	EMI, RF/Wireless, Telecom
Singapore	EMC , RF , Telecom
Europe	EMC, RF, Telecom , Safety



**SIEMIC, INC.**

Accessing global markets

Title: EMC Test Report for GSM Mobile Phone  
Main Model: V5  
Serial Model: N/A  
To: FCC Part 15 Subpart B Class B: 2013 , ANSI C63.4:2009

Report No.: 13070559-FCC-E1  
Issue Date: November 30, 2013  
Page: 3 of 37  
[www.siemic.com.cn](http://www.siemic.com.cn)

---

This page has been left blank intentionally.



# CONTENTS

<b>1</b>	<b>EXECUTIVE SUMMARY &amp; EUT INFORMATION .....</b>	<b>5</b>
<b>2</b>	<b>TECHNICAL DETAILS.....</b>	<b>6</b>
<b>3</b>	<b>MODIFICATION.....</b>	<b>7</b>
<b>4</b>	<b>TEST SUMMARY.....</b>	<b>8</b>
<b>5</b>	<b>MEASUREMENTS, EXAMINATION AND DERIVED RESULTS.....</b>	<b>9</b>
	<b>ANNEX A. TEST INSTRUMENTATION &amp; GENERAL PROCEDURES .....</b>	<b>14</b>
	<b>ANNEX B. EUT AND TEST SETUP PHOTOGRAPHS .....</b>	<b>19</b>
	<b>ANNEX C. TEST SETUP AND SUPPORTING EQUIPMENT.....</b>	<b>32</b>
	<b>ANNEX D. USER MANUAL / BLOCK DIAGRAM / SCHEMATICS / PART LIST .....</b>	<b>36</b>
	<b>ANNEX E. DECLARATION OF SIMILARITY .....</b>	<b>37</b>



# **1 EXECUTIVE SUMMARY & EUT INFORMATION**

**The purpose of this test programme was to demonstrate compliance of the HONG KONG IPRO TECHNOLOGY CO., LIMITED, GSM Mobile Phone and Model: V5 against the current Stipulated Standards. The GSM Mobile Phone has demonstrated compliance with the FCC Part 15 Subpart B Class B: 2013, ANSI C63.4: 2009.**

## **EUT Information**

<b>EUT Description</b>	: GSM Mobile Phone
<b>Main Model</b>	: V5
<b>Serial Model</b>	: N/A
<b>Antenna Gain</b>	: UMTS-FDD Band V/GSM850: -1 dBi UMTS-FDD Band II/PCS1900: 1 dBi Bluetooth: 1.5 dBi WIFI: .1.5 dBi
<b>Input Power</b>	: <b>Battery:</b> Model: V5 Spec: 3.7V 2000mAh Limited charger voltage: 4.2V <b>Adapter:</b> Model: NTR-S01 Input: AC 100-240V 50/60Hz 0.15A Output: DC 5V 0.7A
<b>Classification Per Stipulated Test Standard</b>	: Class B Emission Product Per FCC Part 15 Subpart B Class B: 2013, ANSI C63.4: 2009



## 2 TECHNICAL DETAILS

<b>Purpose</b>	<b>Compliance testing of GSM Mobile Phone with stipulated standards</b>
<b>Applicant / Client</b>	<b>HONG KONG IPRO TECHNOLOGY CO., LIMITED ROOM C1D, 6/F, WING HING INDUSTRIAL BUILDING, 14 HING YIP STREET, KWUN TONG, KOWLOON, HONGKONG</b>
<b>Manufacturer</b>	<b>SHENZHEN ZHIKE COMMUNICATION CO., LTD 1805, Tower A , Phase I, Tianan High-Tech Plaza, Futian District, Shenzhen, P.R.China</b>
<b>Laboratory performing the tests</b>	<b>SIEMIC (Shenzhen-China) Laboratories Zone A, Floor 1, Building 2, Wan Ye Long Technology Park, South Side of Zhoushi Road, Bao'an District, Shenzhen, Guangdong, China Tel: +86-0755-2601 4629 / 2601 4953 Fax: +86-0755-2601 4953-810 Email: China@siemic.com.cn</b>
<b>Test report reference number</b>	<b>13070559-FCC-E1</b>
<b>Date EUT received</b>	<b>November 21, 2013</b>
<b>Standard applied</b>	<b>FCC Part 15 Subpart B Class B: 2013, ANSI C63.4: 2009</b>
<b>Dates of test (from – to)</b>	<b>November 22 to November 29, 2013</b>
<b>No of Units</b>	<b>#1</b>
<b>Equipment Category</b>	<b>JBP</b>
<b>Trade Name</b>	<b>IPRO</b>
<b>RF Operating Frequency (ies)</b>	<b>GSM/GPRS850: TX : 824.2 ~ 848.8 MHz; RX : 869.2 ~ 893.8 MHz PCS/GPRS 1900 TX : 1850.2 ~ 1909.8 MHz; RX : 1930.2 ~ 1989.8 MHz UMTS-FDD Band V TX : 826.4 ~ 846.6 MHz; RX : 871.4 ~ 891.6 MHz UMTS-FDD Band II TX : 1852.4 ~ 1907.6 MHz; RX : 1932.4 ~ 1987.6 MHz 802.11b/g/n(20M): 2412-2462 MHz Bluetooth &amp; BLE: 2402-2480 MHz</b>
<b>Number of Channels</b>	<b>299CH (PCS/GPRS 1900) and 124CH (GSM/GPRS S850) UMTS-FDD Band V : 102CH UMTS-FDD Band II : 277CH Bluetooth: 79CH 802.11b/g/n: 11CH BLE: 40CH</b>
<b>Modulation</b>	<b>GSM/PCS/GPRS: GMSK UMTS-FDD: QPSK 802.11b/g/n: DSSS/OFDM Bluetooth: GFSK &amp; <math>\pi/4</math>DQPSK &amp; 8DPSK BLE: GFSK</b>
<b>GPRS Multi-slot class</b>	<b>8/10/12</b>
<b>FCC ID</b>	<b>PQ4IPROV5</b>



**SIEMIC, Inc.**

Accessing global markets

Title: EMC Test Report for GSM Mobile Phone  
Main Model: V5  
Serial Model: N/A  
To: FCC Part 15 Subpart B Class B: 2013 , ANSI C63.4:2009

Report No.: 13070559-FCC-E1  
Issue Date: November 30, 2013  
Page: 7 of 37  
[www.siemic.com.cn](http://www.siemic.com.cn)

### **3 MODIFICATION**

**NONE**

## 4 TEST SUMMARY

The product was tested in accordance with the following specifications.  
All testing has been performed according to below product classification:

### Class B Emission Product

#### Test Results Summary

Emissions			
Test Standard	Description	Product Class	Pass / Fail
FCC Part 15 Subpart B Class B: 2013, ANSI C63.4: 2009	Conducted Emissions	See Above	Pass
FCC Part 15 Subpart B Class B: 2013, ANSI C63.4: 2009	Radiated Emissions	See Above	Pass

All measurement uncertainty is not taken into consideration for all presented test result.



## **5 MEASUREMENTS, EXAMINATION AND DERIVED RESULTS**

### **5.1 Conducted Emissions Test Result**

*Note:*

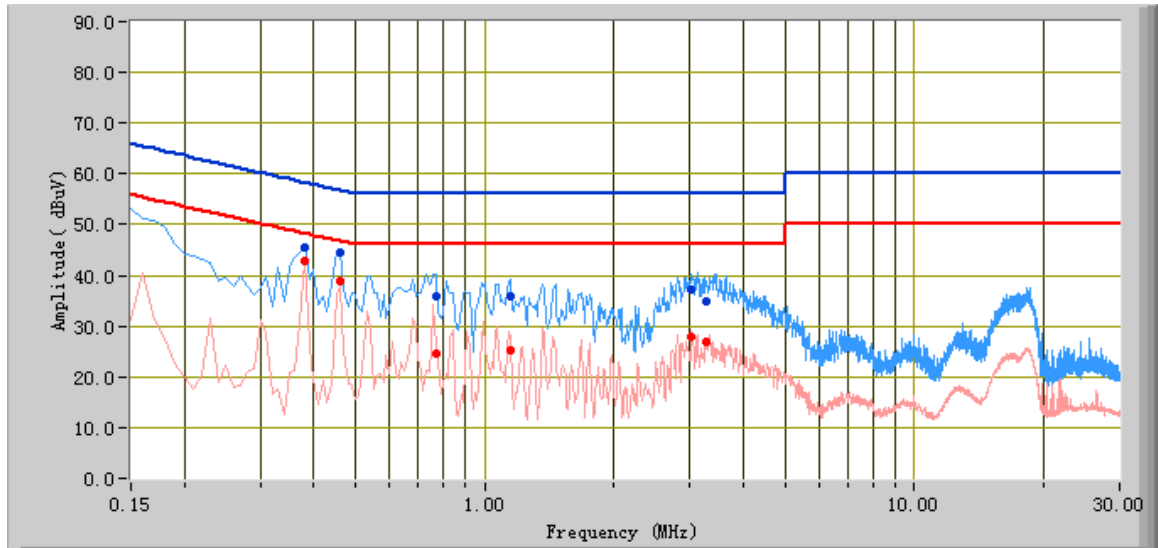
1. All possible modes of operation were investigated. Only the several worst case emissions measured, using the correct CISPR and Average detectors, are reported. All other emissions were relatively insignificant.
2. A "-ve" margin indicates a PASS as it refers to the margin present below the limit line at the particular frequency.
3. Conducted Emissions Measurement Uncertainty  
All test measurements carried out are traceable to national standards. The uncertainty of the measurement at a confidence level of approximately 95% (in the case where distributions are normal), with a coverage factor of 2, in the range 9kHz – 30MHz (Average & Quasi-peak) is  $\pm 3.86\text{dB}$ .
4. Environmental Conditions  

Temperature	20°C
Relative Humidity	50%
Atmospheric Pressure	1009mbar
5. Test date : November 28, 2013  
Tested By : Fly Xu

**Test Result: Pass**

<b>Test Mode:</b>	<b>Charging &amp; Downloading</b>
-------------------	-----------------------------------

**Peak Detector**     **Quasi Peak Limit**      
**Average Detector**     **Average Limit**    



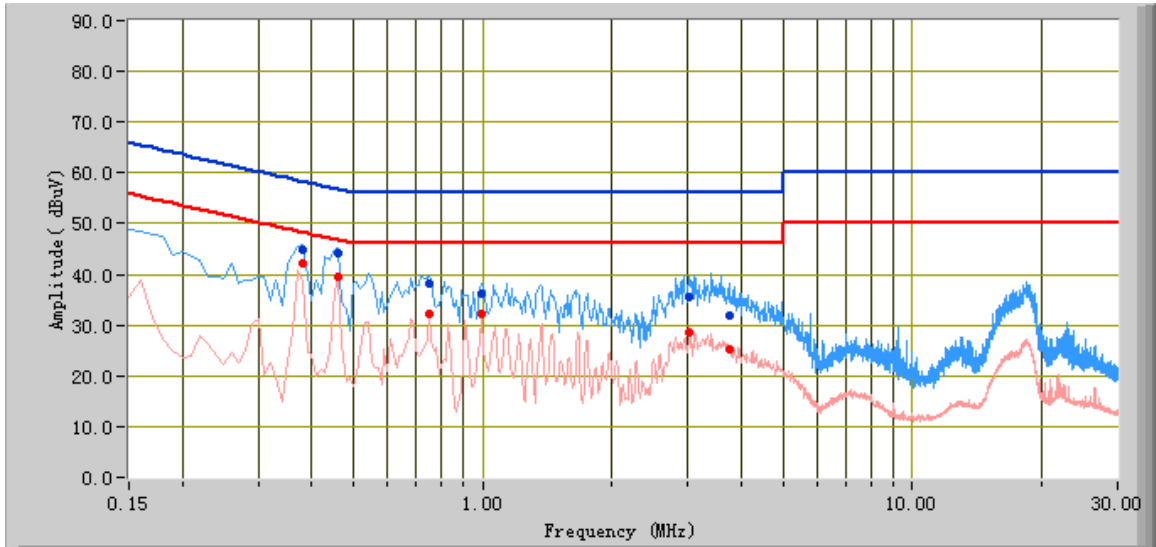
**Test Data**

**Phase Line Plot at 120V AC, 60Hz**

Frequency (MHz)	Quasi Peak (dBuV)	Limit (dBuV)	Margin (dB)	Average (dBuV)	Limit (dBuV)	Margin (dB)	Factors (dB)
0.46	44.35	56.69	-12.34	38.84	46.69	-7.85	10.10
0.38	45.61	58.28	-12.67	42.79	48.28	-5.49	10.10
0.77	35.94	56.00	-20.06	24.63	46.00	-21.37	10.10
3.02	37.14	56.00	-18.86	27.97	46.00	-18.03	10.14
1.15	35.96	56.00	-20.04	25.35	46.00	-20.65	10.10
3.26	34.96	56.00	-21.04	26.75	46.00	-19.25	10.15

<b>Test Mode:</b>	<b>Charging &amp; Downloading</b>
-------------------	-----------------------------------

Peak Detector		Quasi Peak Limit	
Average Detector		Average Limit	



**Test Data**

**Phase Natural Plot at 120V AC, 60Hz**

Frequency (MHz)	Quasi Peak (dBuV)	Limit (dBuV)	Margin (dB)	Average (dBuV)	Limit (dBuV)	Margin (dB)	Factors (dB)
0.46	44.13	56.69	-12.56	39.59	46.69	-7.10	10.10
0.38	44.97	58.28	-13.31	42.10	48.28	-6.18	10.10
0.75	38.05	56.00	-17.95	32.16	46.00	-13.84	10.10
3.02	35.62	56.00	-20.38	28.50	46.00	-17.50	10.14
3.74	31.78	56.00	-24.22	25.19	46.00	-20.81	10.16
0.99	36.32	56.00	-19.68	32.16	46.00	-13.84	10.10

## **5.2 Radiated Emissions Test Result**

*Note:*



1. All possible modes of operation were investigated. Only the 6 worst case emissions measured, using the correct CISPR detectors, are reported. All other emissions were relatively insignificant.
2. A "-ve" margin indicates a PASS as it refers to the margin present below the limit line at the particular frequency.
3. Radiated Emissions Measurement Uncertainty  
All test measurements carried out are traceable to national standards. The uncertainty of the measurement at a confidence level of approximately 95% (in the case where distributions are normal), with a coverage factor of 2, in the range 30MHz – 1GHz (QP only @ 3m & 10m) is +6dB/-6dB (for EUTs < 0.5m X 0.5m X 0.5m).
4. 

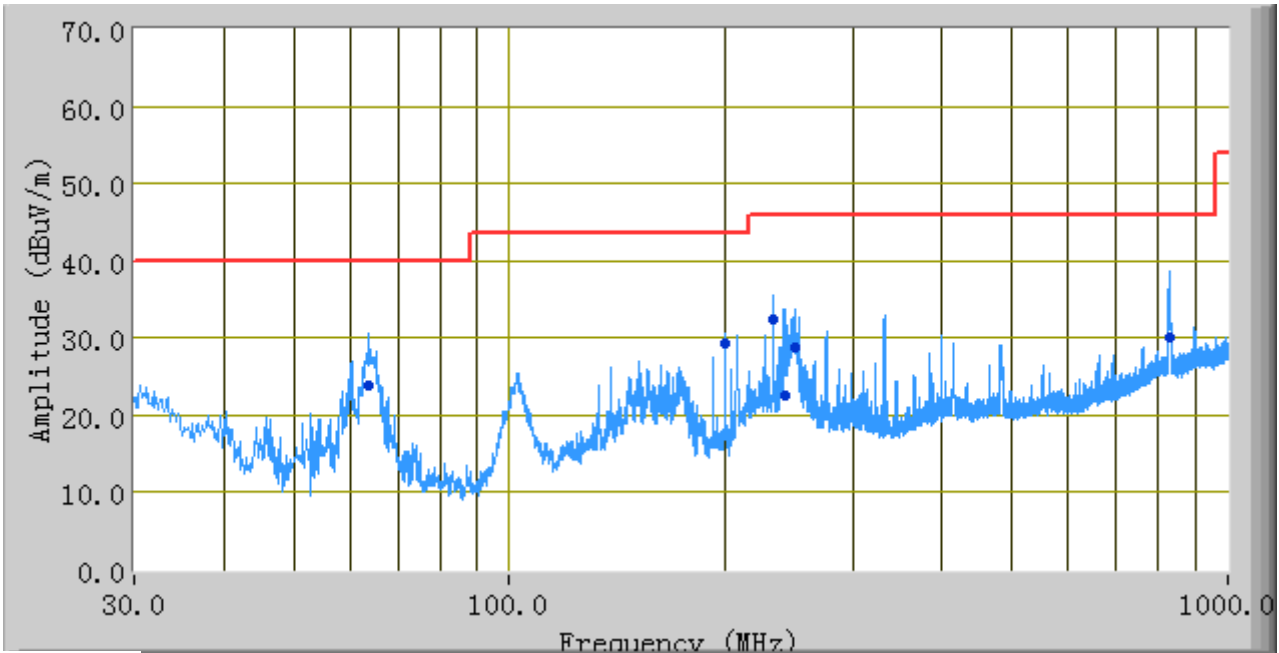
Environmental Conditions	Temperature	20°C
	Relative Humidity	50%
	Atmospheric Pressure	1009mbar
5. Test date : November 28, 2013  
Tested By : Fly Xu

**Test Result: Pass**

<b>Test Mode:</b>	<b>Charging &amp; Downloading</b>
-------------------	-----------------------------------

**Below 1GHz**

Peak Detector   
 Quasi Peak Limit 



**Test Data**

Frequency (MHz)	Quasi Peak (dBuV/m)	Azimuth	Polarity(H/V)	Height (cm)	Factors (dB)	Limit (dBuV)	Margin (dB)
830.84	30.06	187.00	V	123.00	3.89	46.00	-15.94
63.54	23.95	150.00	V	135.00	-13.85	40.00	-16.05
232.32	32.49	295.00	H	140.00	-7.65	46.00	-13.51
241.73	22.67	280.00	H	254.00	-7.51	46.00	-23.33
249.01	28.76	63.00	H	134.00	-7.41	46.00	-17.24
199.19	29.19	138.00	H	128.00	-8.15	43.52	-14.33

*Note: The data above 1 GHz which below 20 dB to the limit was not recorded.*



**SIEMIC, INC.**

Accessing global markets

Title: EMC Test Report for GSM Mobile Phone  
Main Model: V5  
Serial Model: N/A  
To: FCC Part 15 Subpart B Class B: 2013 , ANSI C63.4:2009

Report No.: 13070559-FCC-E1  
Issue Date: November 30, 2013  
Page: 14 of 37  
www.siemic.com.cn

## **Annex A. TEST INSTRUMENTATION & GENERAL PROCEDURES**

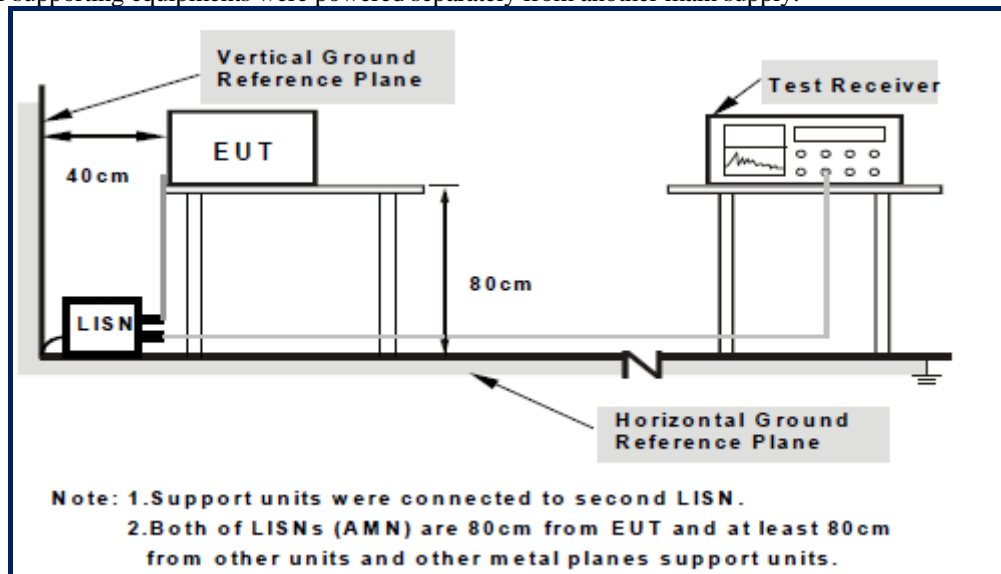
### **Annex A. i. TEST INSTRUMENTATION**

<b>Instrument</b>	<b>Model</b>	<b>Serial #</b>	<b>Calibration Date</b>	<b>Calibration Due Date</b>
<b>AC Line Conducted Emissions</b>				
EMI test receiver	ESL6	100262	11/19/2013	11/18/2014
Line Impedance Stabilization Network	LI-125A	191106	11/14/2013	11/13/2014
Line Impedance Stabilization Network	LI-125A	191107	11/14/2013	11/13/2014
Transient Limiter	LIT-153	531118	03/03/2013	03/02/2014
<b>Radiated Emissions</b>				
EMI test receiver	ESL6	100262	11/19/2013	11/18/2014
Positioning Controller	UC3000	MF78020828 2	11/19/2013	11/18/2014
OPT 010 AMPLIFIER(0.1-1300MHz)	8447E	2727A02430	11/19/2013	11/18/2014
Microwave Preamplifier(0.5~18GHz)	PAM-118	443008	11/08/2013	11/07/2014
Bilog Antenna (30MHz~6GHz)	JB6	A110712	01/27/2013	01/26/2014
Double Ridge Horn Antenna (1~18GHz)	AH-118	071283	11/20/2013	11/19/2014

## **Annex A. ii. AC LINE CONDUCTED EMISSIONS TEST DESCRIPTION**

### **Test Set-up**

1. The EUT and supporting equipment were set up in accordance with the requirements of the standard on top of a 1.5m x 1m x 0.8m high, non-metallic table, as shown in Annex B.
2. The power supply for the EUT was fed through a 50Ω/50μH EUT LISN, connected to filtered mains.
3. The RF OUT of the EUT LISN was connected to the EMI test receiver via a low-loss coaxial cable.
4. All other supporting equipments were powered separately from another main supply.



For the actual test configuration, please refer to the related item – Photographs of the Test Configuration1

### **Test Method**

1. The EUT was switched on and allowed to warm up to its normal operating condition.
2. A scan was made on the NEUTRAL line (for AC mains) or Earth line (for DC power) over the required frequency range using an EMI test receiver.
3. High peaks, relative to the limit line, were then selected.
4. The EMI test receiver was then tuned to the selected frequencies and the necessary measurements made with a receiver bandwidth setting of 10 kHz. For FCC tests, only Quasi-peak measurements were made; while for CISPR/EN tests, both Quasi-peak and Average measurements were made.
5. Steps 2 to 4 were then repeated for the LIVE line (for AC mains) or DC line (for DC power).

### **Description of Conducted Emission Program**

This EMC Measurement software run Lab View automation software and offers a common user interface for electromagnetic interference (EMI) measurements. This software is a modern and powerful tool for controlling and monitoring EMI test receivers and EMC test systems. It guarantees reliable collection, evaluation, and documentation of measurement results. Basically, this program will run a pre-scan measurement before it proceeds with the final measurement. The pre-scan routine will run the common scan range from 150 kHz to 30 MHz; the program will first start a peak and average scan on selectable measurement time and step size. After the program complete the pre-scan, this program will perform the Quasi Peak and Average measurement, based on the pre-scan peak data reduction result.



**SIEMIC, INC.**

Accessing global markets

Title: EMC Test Report for GSM Mobile Phone  
Main Model: V5  
Serial Model: N/A  
To: FCC Part 15 Subpart B Class B: 2013 , ANSI C63.4:2009

Report No.: 13070559-FCC-E1  
Issue Date: November 30, 2013  
Page: 16 of 37  
www.siemic.com.cn

## **Sample Calculation Example**

At 20 MHz

limit =  $250 \mu\text{V} = 47.96 \text{ dB}\mu\text{V}$

Transducer factor of LISN, pulse limiter & cable loss at 20 MHz = 11.20 dB

Q-P reading obtained directly from EMI Receiver = 40.00 dB $\mu\text{V}$   
(Calibrated for system losses)

Therefore, Q-P margin =  $47.96 - 40.00 = 7.96$  i.e. **7.96 dB below limit**



**Annex A. iii. RADIATED EMISSIONS TEST DESCRIPTION**

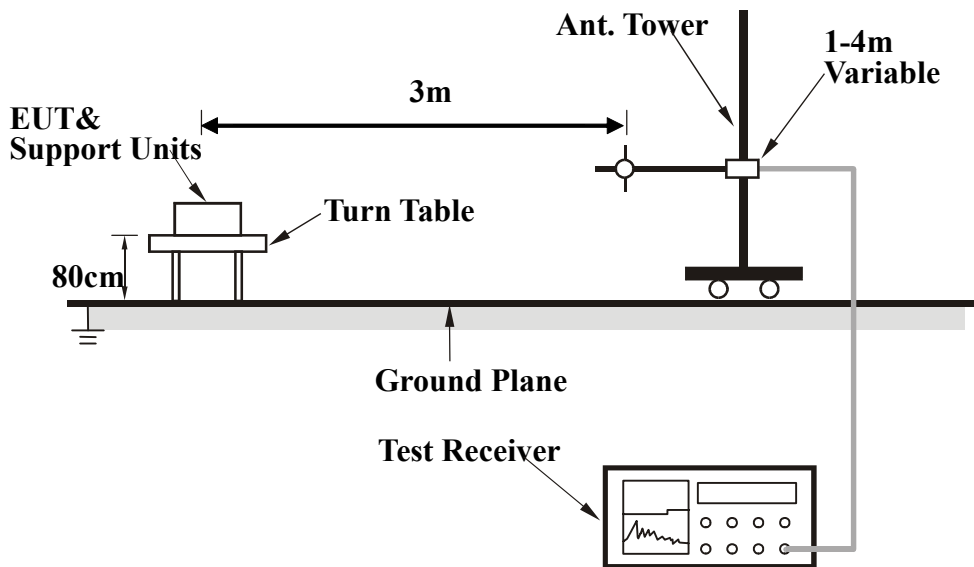
**EUT Characterization**

EUT characterisation, over the frequency range from 30MHz to 10<sup>th</sup> Harmonic, was done in order to minimise radiated emissions testing time while still maintaining high confidence in the test results.

The EUT was placed in the chamber, at a height of about 0.8 m on a turntable. Its radiated emissions frequency profile was observed, using a spectrum analyzer /receiver with the appropriate broadband antenna placed 3m away from the EUT. Radiated emissions from the EUT were maximised by rotating the turntable manually, changing the antenna polarisation and manipulating the EUT cables while observing the frequency profile on the spectrum analyzer / receiver. Frequency points at which maximum emissions occurred; clock frequencies and operating frequencies were then noted for the formal radiated emissions test at the Open Area Test Site (OATS) or 3m EMC chamber.

**Test Set-up**

1. The EUT and supporting equipment were set up in accordance with the requirements of the standard on top of a 1.5mX1.0mX0.8m high, non-conductive table.
2. The filtered power supply for the EUT and supporting equipment were tapped from the appropriate power sockets located on the turntable.
3. The relevant broadband antenna was set at the required test distance away from the EUT and supporting equipment boundary.



For the actual test configuration, please refer to the related item – Photographs of the Test Configuration2

**Test Method**

The following procedure was performed to determine the maximum emission axis of EUT:

1. With the receiving antenna is H polarization, rotate the EUT in turns with three orthogonal axes to determine the axis of maximum emission.
2. With the receiving antenna is V polarization, rotate the EUT in turns with three orthogonal axes to determine the axis of maximum emission.
3. Compare the results derived from above two steps. So, the axis of maximum emission from EUT was determined and the configuration was used to perform the final measurement.

**Final Radiated Emission Measurement**

1. Setup the configuration according to figure 1. Turn on EUT and make sure that it is in normal function.
2. For emission frequencies measured below 1GHz, a pre-scan is performed in a shielded chamber to determine the accurate frequencies of higher emissions will be checked on an open test site. As the same purpose, for emission frequencies measured above 1GHz, a pre-scan also be performed with a 1 meter measuring distance before final test.
3. For emission frequencies measured below and above 1GHz, set the spectrum analyzer on a 100kHz and 1MHz resolution bandwidth respectively for each frequency measured in step 2.
4. The search antenna is to be raised and lowered over a range from 1 to 4 meters in horizontally polarized orientation. Position the highness when the highest value is indicated on spectrum analyzer, then change the orientation of EUT on test table over a range from 0° to 360° with a speed as slow as possible, and keep the azimuth that highest emission is indicated on the spectrum analyzer. Vary the antenna position again and record the highest value as a final reading.
5. Repeat step 4 until all frequencies need to be measured was complete.
6. Repeat step 5 with search antenna in vertical polarized orientations.

During the radiated emission test, the Spectrum Analyzer was set with the following configurations:

Frequency Band (MHz)	Function	Resolution bandwidth	Video Bandwidth
30 to 1000	Peak	100kHz	100kHz
Above 1000	Peak	1MHz	1MHz
	Average	1MHz	10Hz

**Sample Calculation Example**

The field strength is calculated by adding the Antenna Factor and Cable Factor, and subtracting the Amplifier Gain (if any) from the measured reading. For the limit is employed average value, therefore the peak value can be transferred to average value by subtracting the duty factor. The basic equation with a sample calculation is as follows:

$$\text{Peak} = \text{Reading} + \text{Corrected Factor}$$

where

$$\text{Corr. Factor} = \text{Antenna Factor} + \text{Cable Factor} - \text{Amplifier Gain (if any)}$$

And the average value is

$$\text{Average} = \text{Peak Value} + \text{Duty Factor or}$$

$$\text{Set RBW} = 1\text{MHz, VBW} = 10\text{Hz.}$$

Note:

If the measured frequencies are fall in the restricted frequency band, the limit employed must be quasi peak value when frequencies are below or equal to 1GHz. And the measuring instrument is set to quasi peak detector function.

**Annex B. EUT AND TEST SETUP PHOTOGRAPHS**

**Annex B. i. Photograph 1: EUT External Photo**



Whole Package - Top View



**SIEMIC, INC.**

Accessing global markets

Title: EMC Test Report for GSM Mobile Phone  
Main Model: V5  
Serial Model: N/A  
To: FCC Part 15 Subpart B Class B: 2013 , ANSI C63.4:2009

Report No.: 13070559-FCC-E1  
Issue Date: November 30, 2013  
Page: 20 of 37  
www.siemic.com.cn



EUT - Front View



EUT - Rear View



**SIEMIC, INC.**

Accessing global markets

Title: EMC Test Report for GSM Mobile Phone  
Main Model: V5  
Serial Model: N/A  
To: FCC Part 15 Subpart B Class B: 2013 , ANSI C63.4:2009

Report No.: 13070559-FCC-E1  
Issue Date: November 30, 2013  
Page: 21 of 37  
www.siemic.com.cn



EUT - Top View



EUT - Bottom View



**SIEMIC, INC.**

Accessing global markets

Title: EMC Test Report for GSM Mobile Phone  
Main Model: V5  
Serial Model: N/A  
To: FCC Part 15 Subpart B Class B: 2013 , ANSI C63.4:2009

Report No.: 13070559-FCC-E1  
Issue Date: November 30, 2013  
Page: 22 of 37  
www.siemic.com.cn



EUT - Left View



EUT - Right View

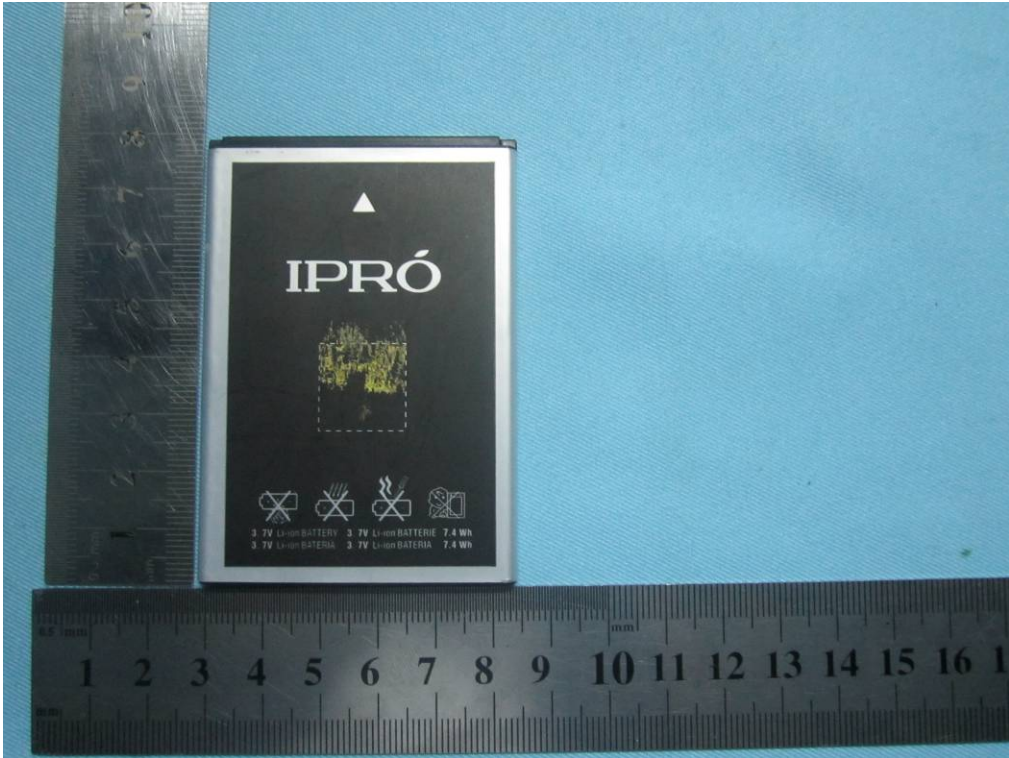
**Annex B. ii. Photograph 2: EUT Internal Photo**



Cover Off - Top View



Cover Off - Rear Housing View



Battery - Top View



Battery - Bottom View



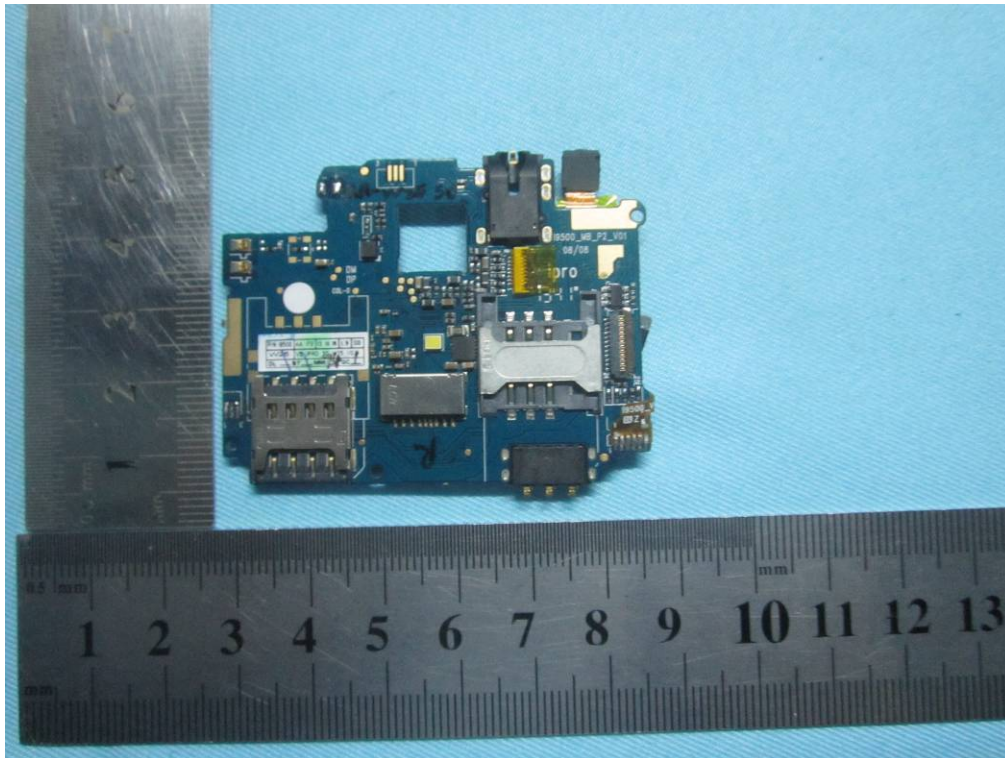


**SIEMIC, INC.**

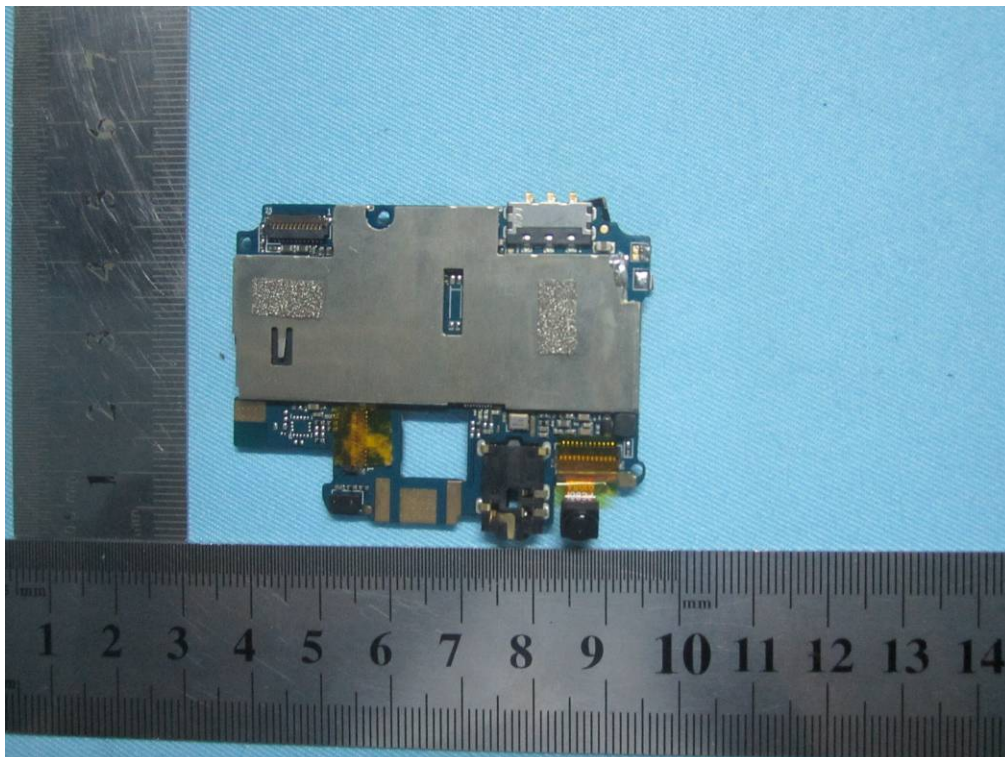
Accessing global markets

Title: EMC Test Report for GSM Mobile Phone  
Main Model: V5  
Serial Model: N/A  
To: FCC Part 15 Subpart B Class B: 2013 , ANSI C63.4:2009

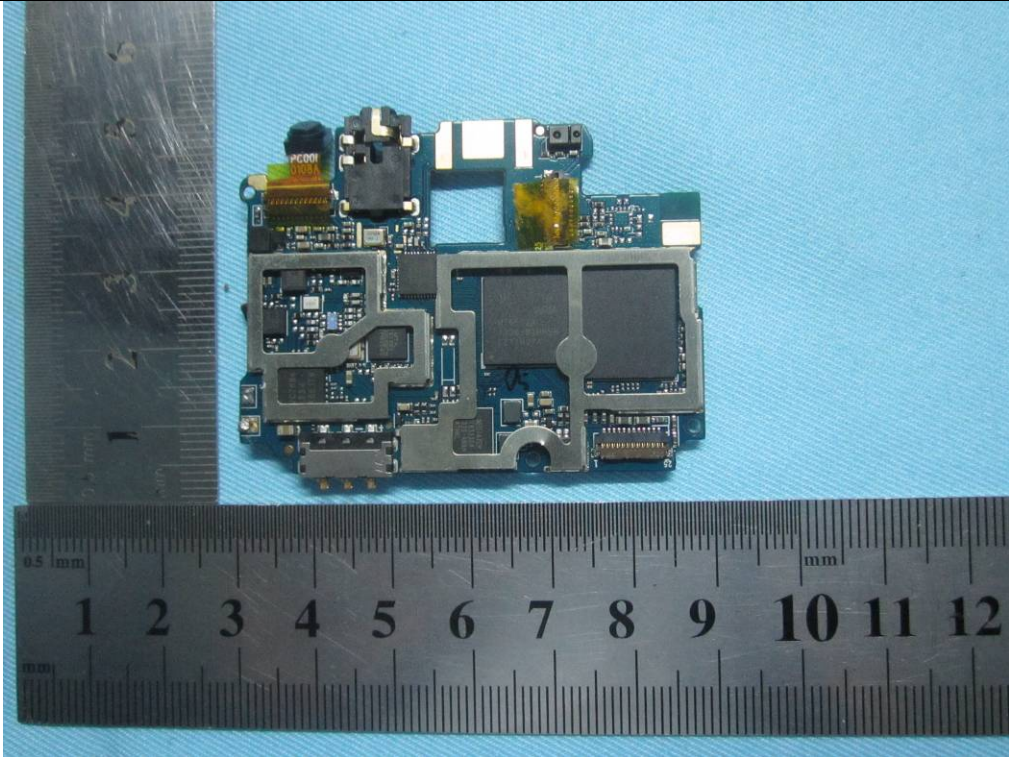
Report No.: 13070559-FCC-E1  
Issue Date: November 30, 2013  
Page: 25 of 37  
www.siemic.com.cn



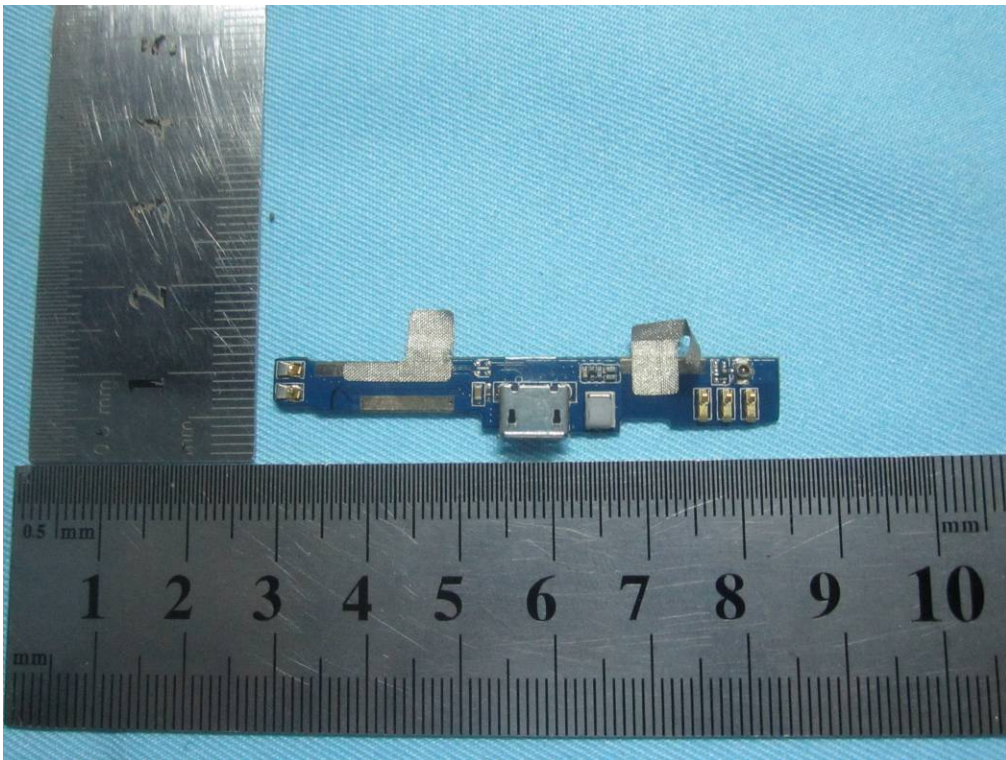
Mainborad - Top View



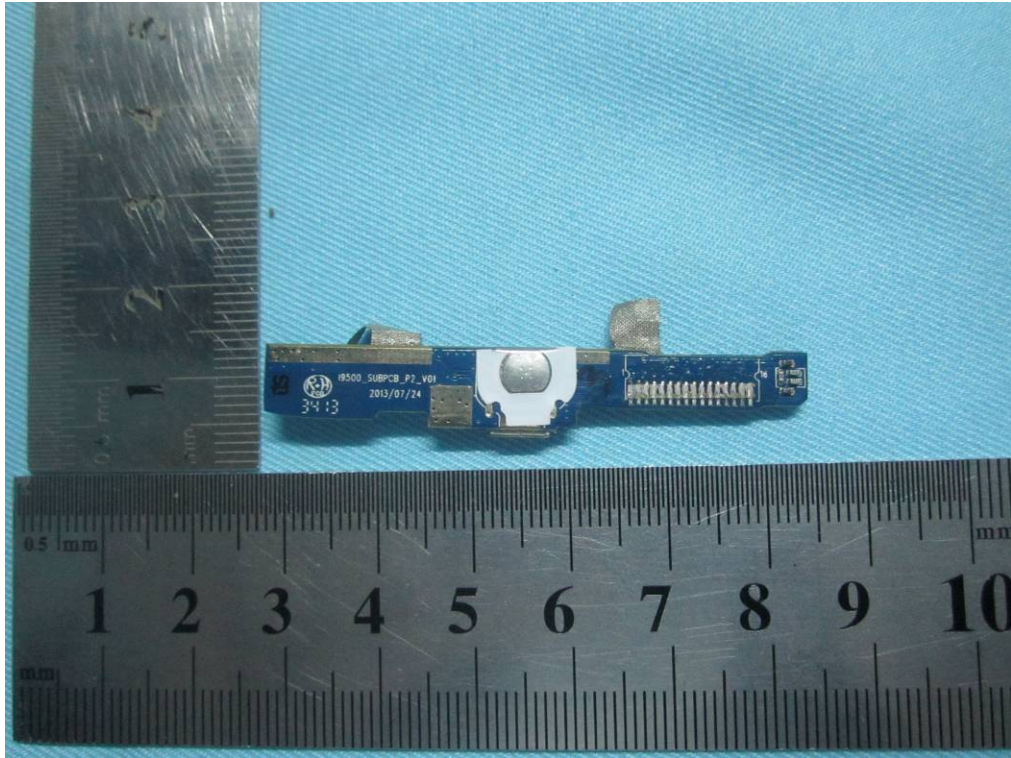
Mainborad With Shielding - Bottom View



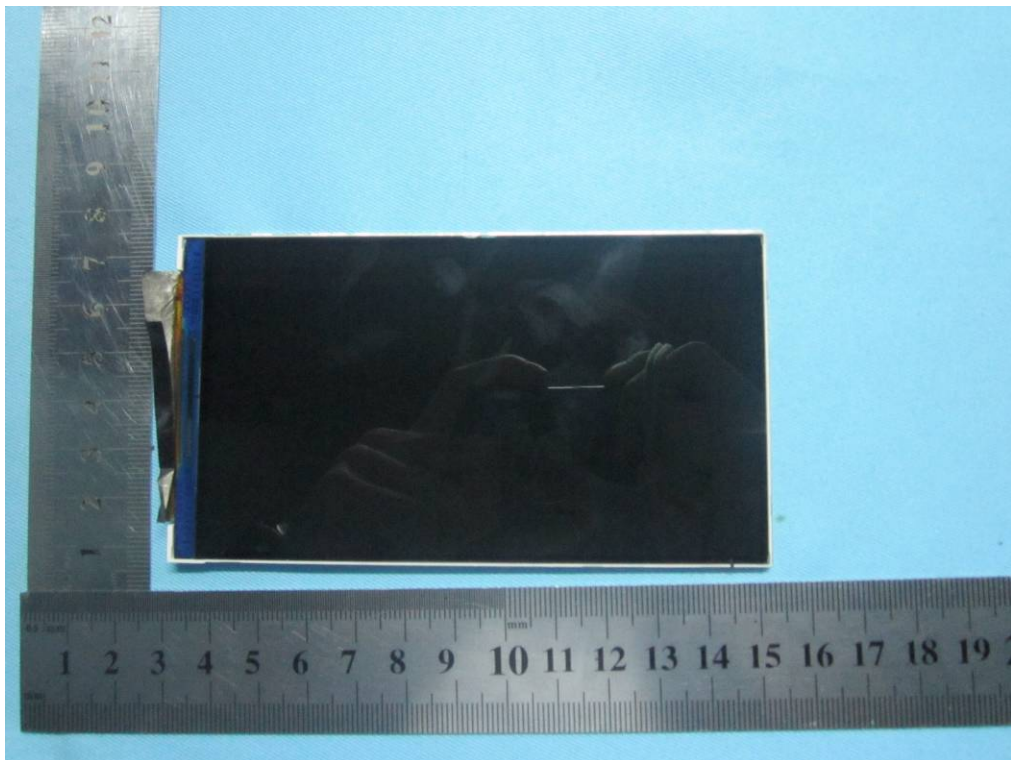
Mainboard Without Shielding - Bottom View



Connectboard - Top View



Connectboard – Bottom View



LCD – Top View

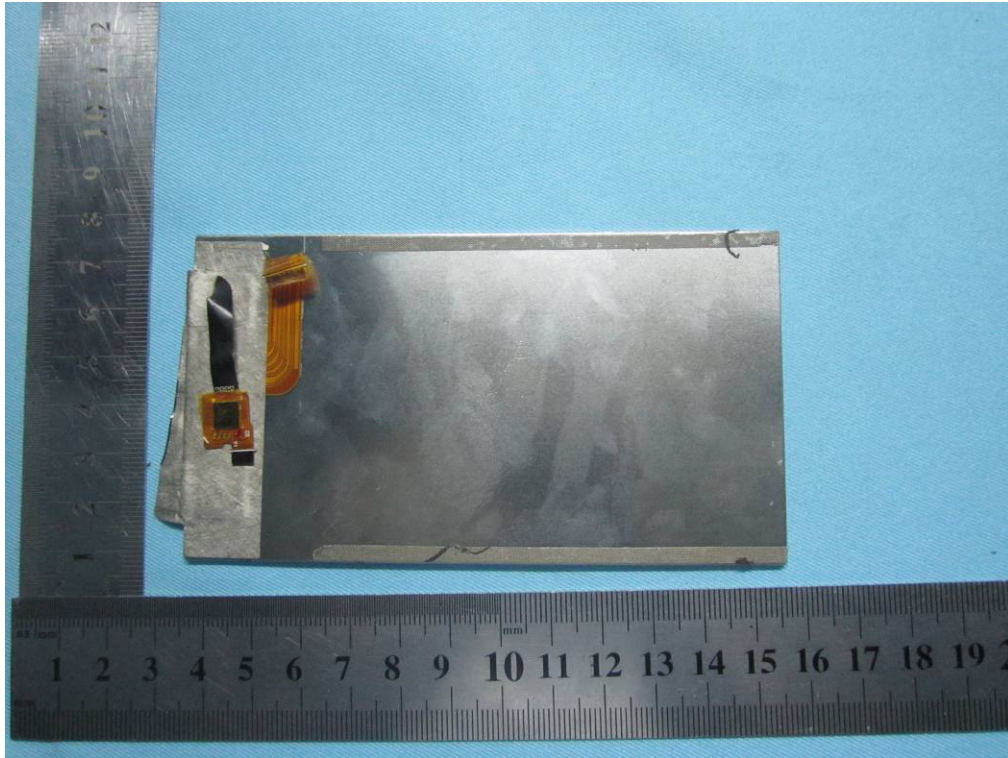


**SIEMIC, INC.**

Accessing global markets

Title: EMC Test Report for GSM Mobile Phone  
Main Model: V5  
Serial Model: N/A  
To: FCC Part 15 Subpart B Class B: 2013 , ANSI C63.4:2009

Report No.: 13070559-FCC-E1  
Issue Date: November 30, 2013  
Page: 28 of 37  
www.siemic.com.cn



LCD – Bottom View



Bluetooth / BLE / WIFI Antenna View



**SIEMIC, INC.**

Accessing global markets

Title: EMC Test Report for GSM Mobile Phone  
Main Model: V5  
Serial Model: N/A  
To: FCC Part 15 Subpart B Class B: 2013 , ANSI C63.4:2009

Report No.: 13070559-FCC-E1  
Issue Date: November 30, 2013  
Page: 29 of 37  
www.siemic.com.cn

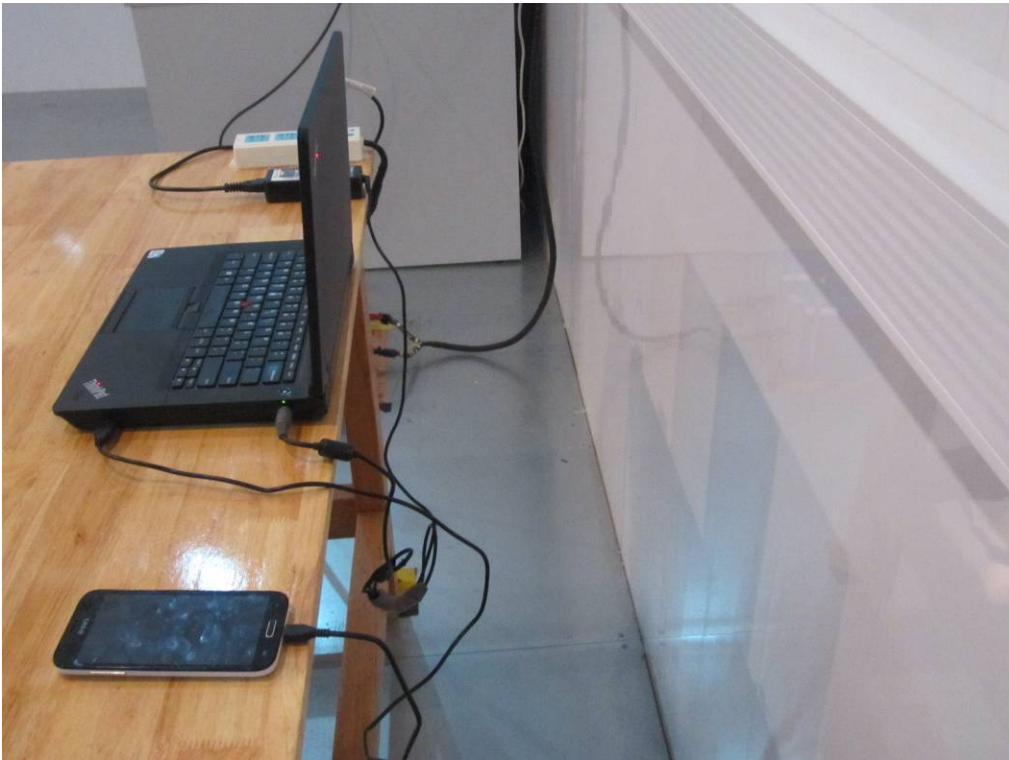


GSM / PCS/ UMTS Antenna View

**Annex B.iii. Photograph 3: Test Setup Photo**



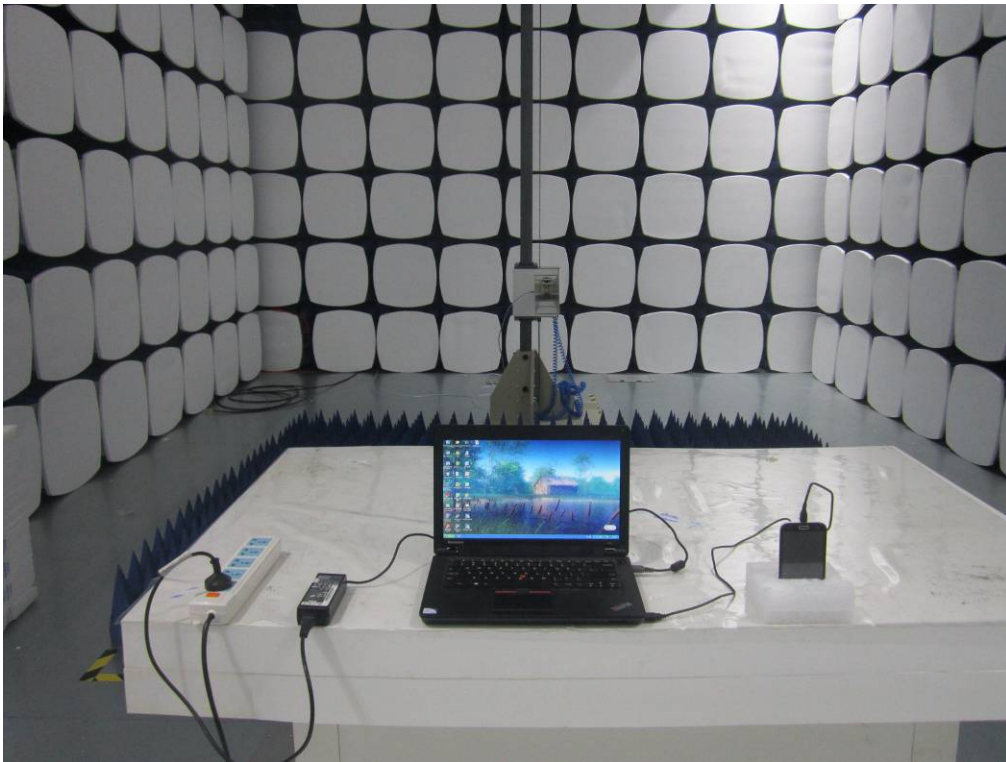
Conducted Emissions Test Setup Front View



Conducted Emissions Test Setup Side View



Radiated Spurious Emissions Test Setup Below 1GHz - Front View



Radiated Spurious Emissions Test Setup Above 1GHz - Front View



**SIEMIC, INC.**

Accessing global markets

Title: EMC Test Report for GSM Mobile Phone  
Main Model: V5  
Serial Model: N/A  
To: FCC Part 15 Subpart B Class B: 2013 , ANSI C63.4:2009

Report No.: 13070559-FCC-E1  
Issue Date: November 30, 2013  
Page: 32 of 37  
www.siemic.com.cn

## **Annex C. TEST SETUP AND SUPPORTING EQUIPMENT**

### **EUT TEST CONDITIONS**

#### **Annex C. i. SUPPORTING EQUIPMENT DESCRIPTION**

The following is a description of supporting equipment and details of cables used with the EUT.

<b>Equipment Description (Including Brand Name)</b>	<b>Model &amp; Serial Number</b>	<b>Cable Description (List Length, Type &amp; Purpose)</b>
Lenovo Laptop	E40& 0579A52	N/A





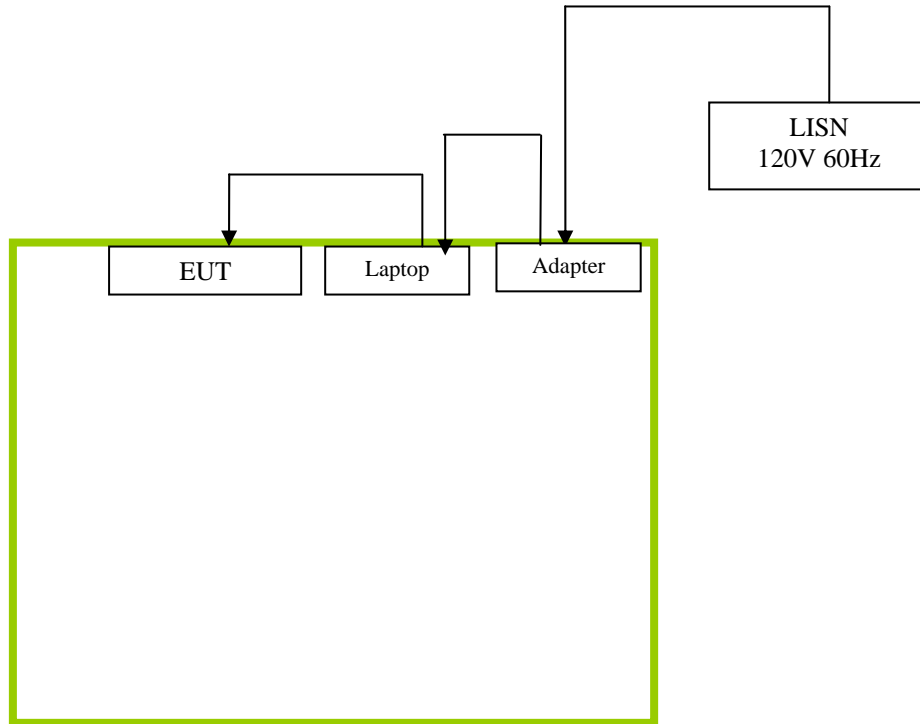
**SIEMIC, INC.**

Accessing global markets

Title: EMC Test Report for GSM Mobile Phone  
Main Model: V5  
Serial Model: N/A  
To: FCC Part 15 Subpart B Class B: 2013 , ANSI C63.4:2009

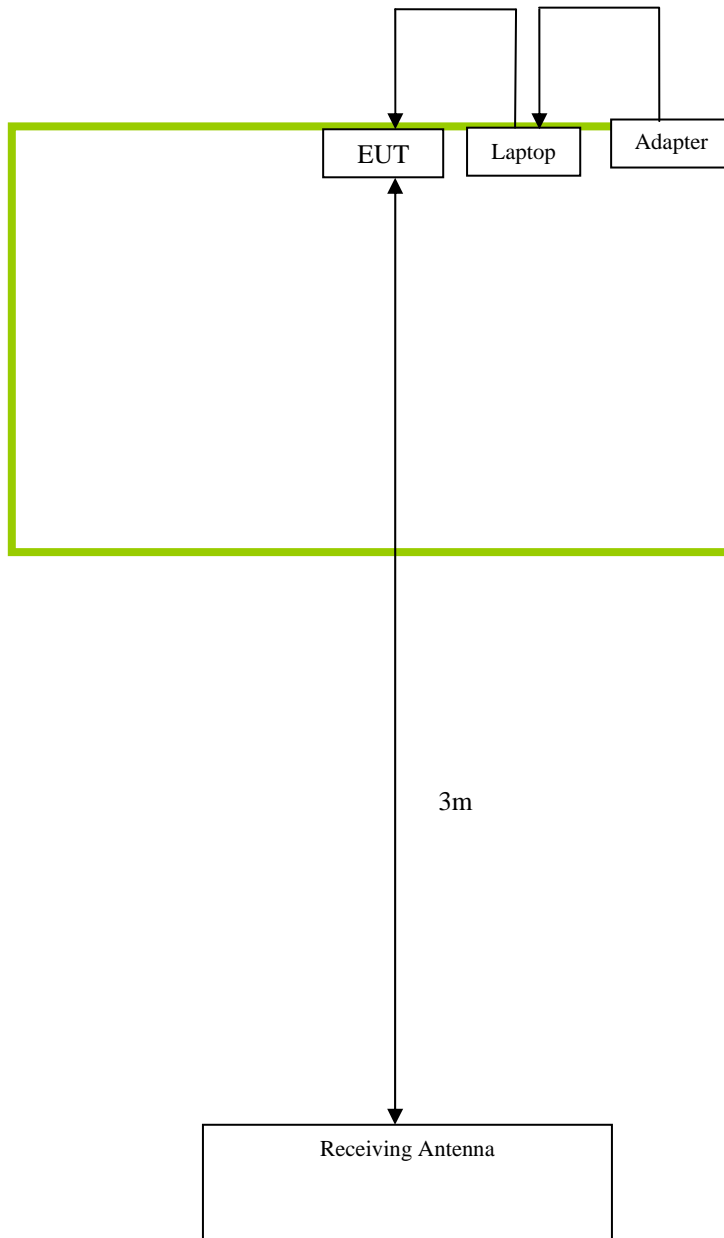
Report No.: 13070559-FCC-E1  
Issue Date: November 30, 2013  
Page: 33 of 37  
www.siemic.com.cn

## Block Configuration Diagram for Conducted Emissions Mode: Charging & Downloading





## Block Configuration Diagram for Radiated Emissions Mode: Charging & Downloading





**SIEMIC, INC.**

Accessing global markets

Title: EMC Test Report for GSM Mobile Phone  
Main Model: V5  
Serial Model: N/A  
To: FCC Part 15 Subpart B Class B: 2013 , ANSI C63.4:2009

Report No.: 13070559-FCC-E1  
Issue Date: November 30, 2013  
Page: 35 of 37  
www.siemic.com.cn

### **Annex C. ii. EUT OPERATING CONDITIONS**

The following is the description of how the EUT is exercised during testing.

<b>Test</b>	<b>Description Of Operation</b>
<b>Emissions</b>	Charging & Downloading



**SIEMIC, INC.**

Accessing global markets

Title: EMC Test Report for GSM Mobile Phone  
Main Model: V5  
Serial Model: N/A  
To: FCC Part 15 Subpart B Class B: 2013 , ANSI C63.4:2009

Report No.: 13070559-FCC-E1  
Issue Date: November 30, 2013  
Page: 36 of 37  
[www.siemic.com.cn](http://www.siemic.com.cn)

## **Annex D. USER MANUAL / BLOCK DIAGRAM / SCHEMATICS / PART LIST**

**Please see attachment**



**SIEMIC, INC.**

Accessing global markets

Title: EMC Test Report for GSM Mobile Phone  
Main Model: V5  
Serial Model: N/A  
To: FCC Part 15 Subpart B Class B: 2013 , ANSI C63.4:2009

Report No.: 13070559-FCC-E1  
Issue Date: November 30, 2013  
Page: 37 of 37  
[www.siemic.com.cn](http://www.siemic.com.cn)

## **Annex E. DECLARATION OF SIMILARITY**

**N/A**