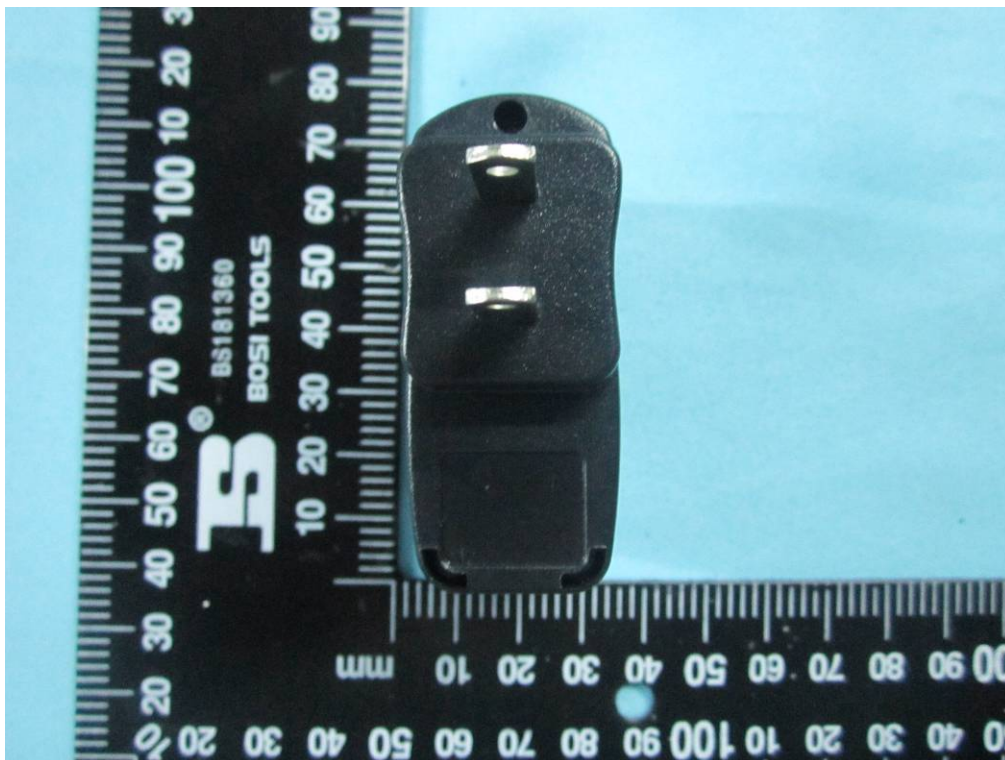


Annex B. EUT AND TEST SETUP PHOTOGRAPHS

Annex B.i. Photograph 1: EUT External Photo



Whole Package - Top View



Adapter – Front View



SIEMIC, INC.

Accessing global markets

Title: EMC Test Report for Smart Mobile Phone
Main Model: TRANS I
Serial Model: N/A
To: FCC Part 15 Subpart B Class B: 2013 , ANSI C63.4:2009

Report No.: 14070231-FCC-E1
Issue Date: May 24, 2014
Page: 20 of 36
www.siemmic.com
www.sinmic.com.cn



EUT - Front View



EUT - Rear View



SIEMIC, INC.

Accessing global markets

Title: EMC Test Report for Smart Mobile Phone
Main Model: TRANS I
Serial Model: N/A
To: FCC Part 15 Subpart B Class B: 2013 , ANSI C63.4:2009

Report No.: 14070231-FCC-E1
Issue Date: May 24, 2014
Page: 21 of 36
www.siemic.com
www.sinmic.com.cn



EUT - Top View



EUT - Bottom View



SIEMIC, INC.

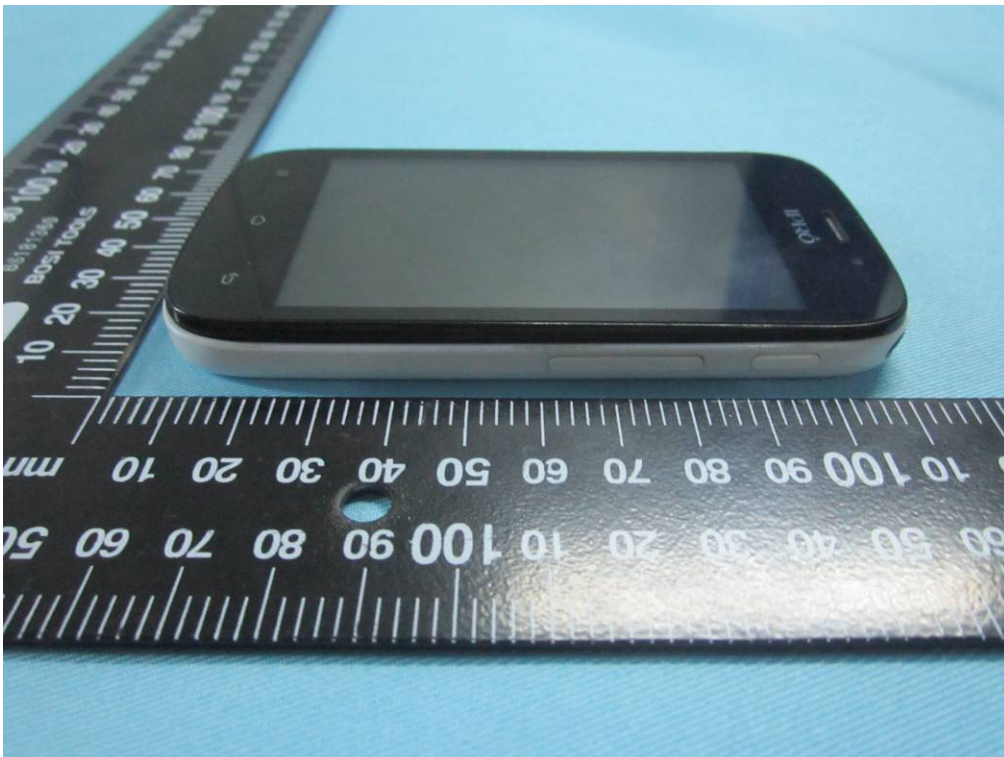
Accessing global markets

Title: EMC Test Report for Smart Mobile Phone
Main Model: TRANS I
Serial Model: N/A
To: FCC Part 15 Subpart B Class B: 2013 , ANSI C63.4:2009

Report No.: 14070231-FCC-E1
Issue Date: May 24, 2014
Page: 22 of 36
www.siemic.com
www.sinmic.com.cn



EUT - Left View



EUT - Right View