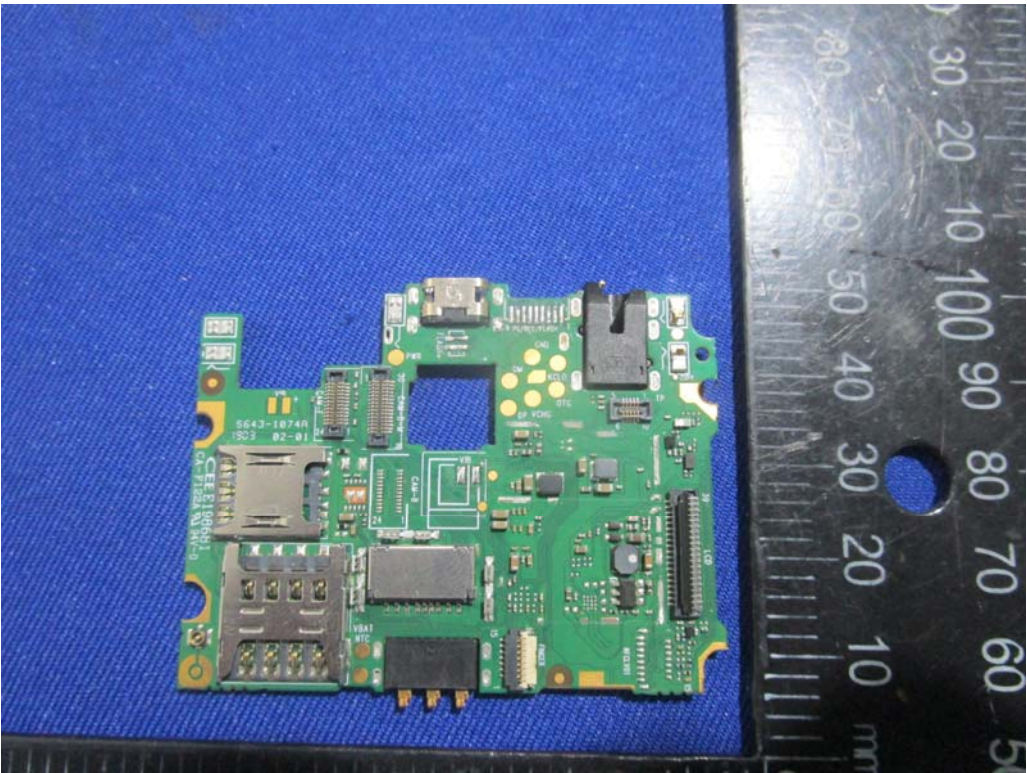
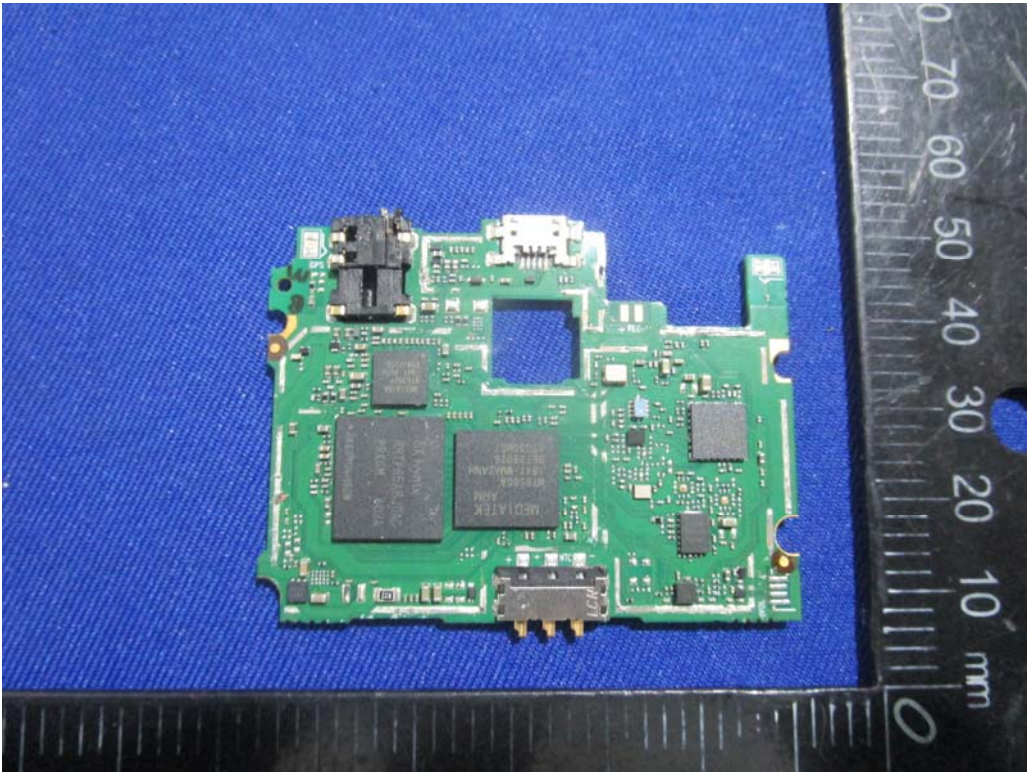
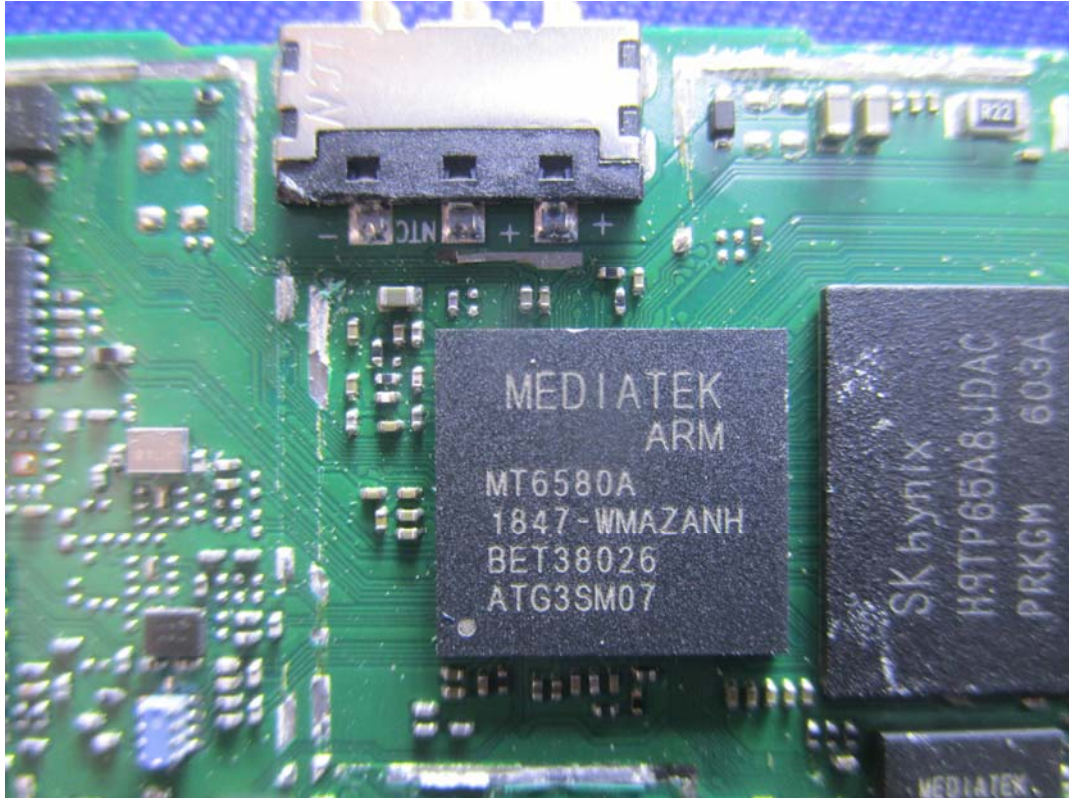


EXHIBIT B - EUT INTERNAL PHOTOGRAPHS





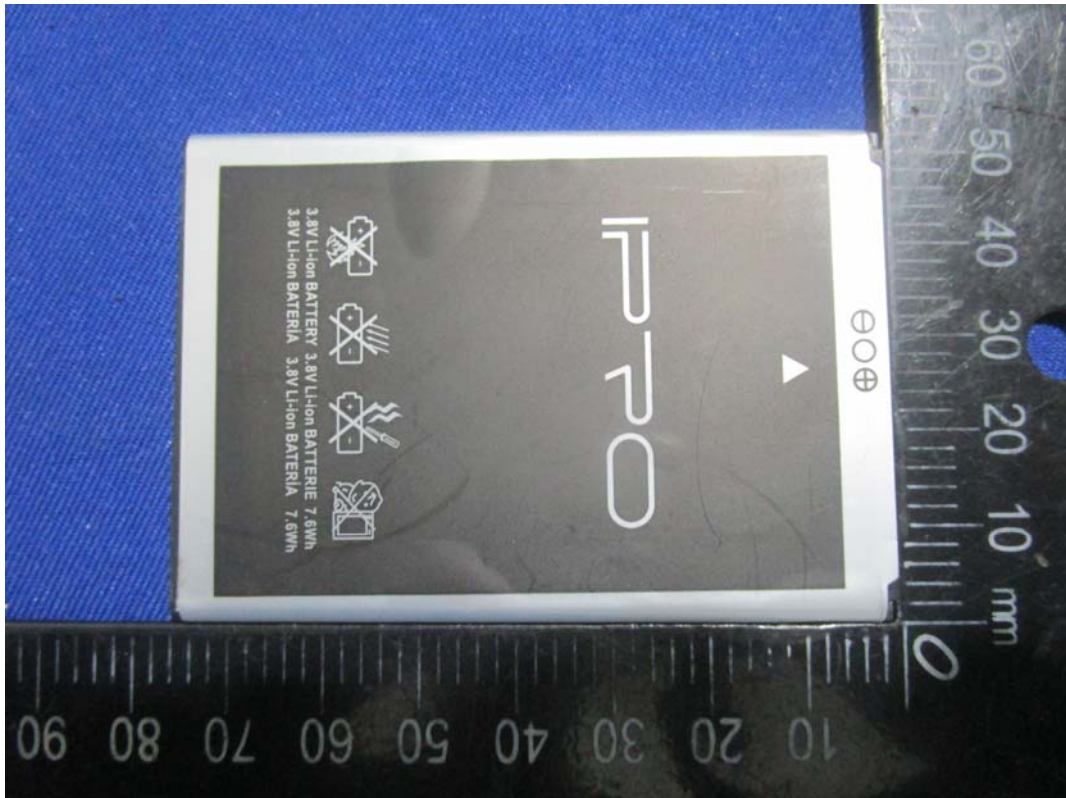




BT&WIFI Antenna



GSM&WCDMA Antenna



Li-ion Rechargeable Battery
2000 mAh Model: Ruby55
Restrictive Voltage:4.35V
Charging Voltage:3.8V

- ⚠ Caution:
- Use the authorized charger only.
 - Never disassemble by yourself.
 - Never short-circuit the battery.
 - Dispose the battery properly.
 - Do not expose battery to open flames, could cause explosion.

GB/T 18287-2013

