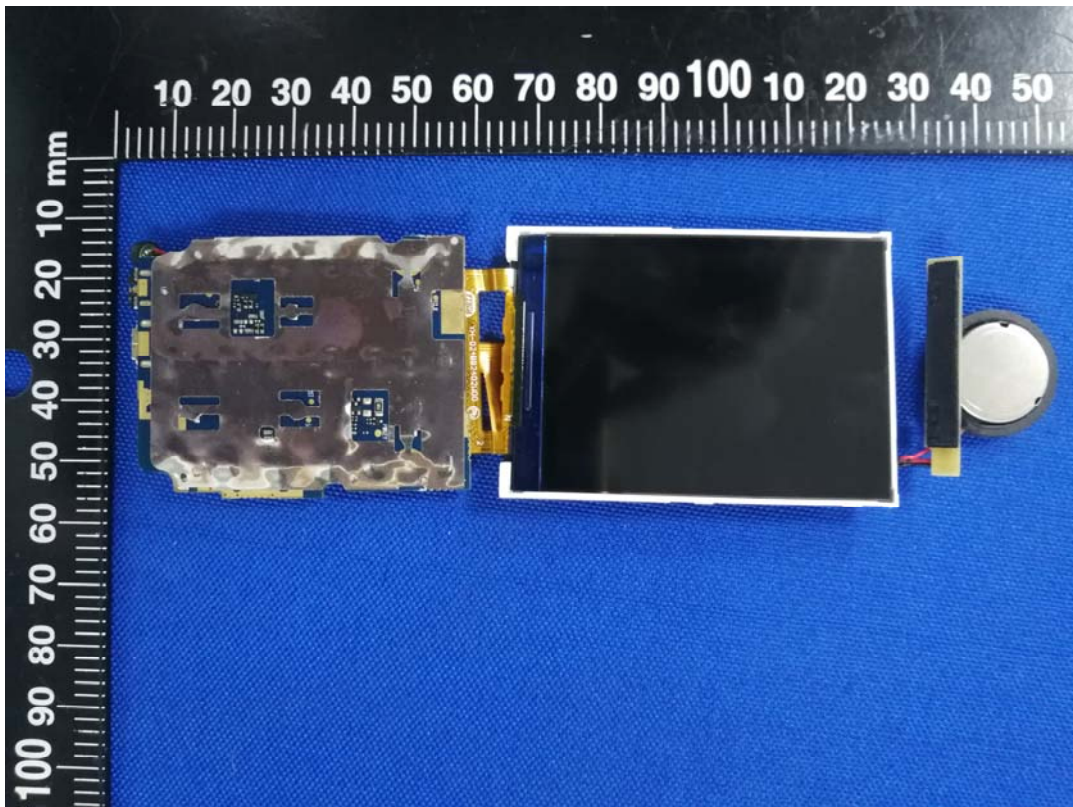
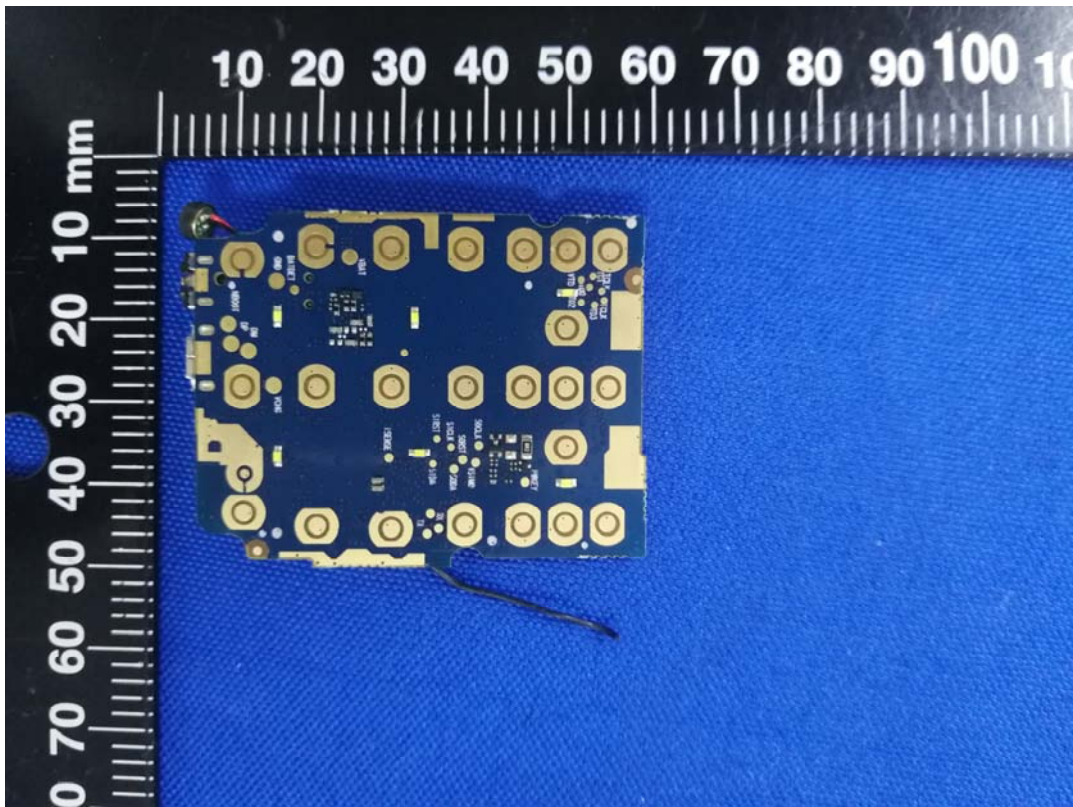
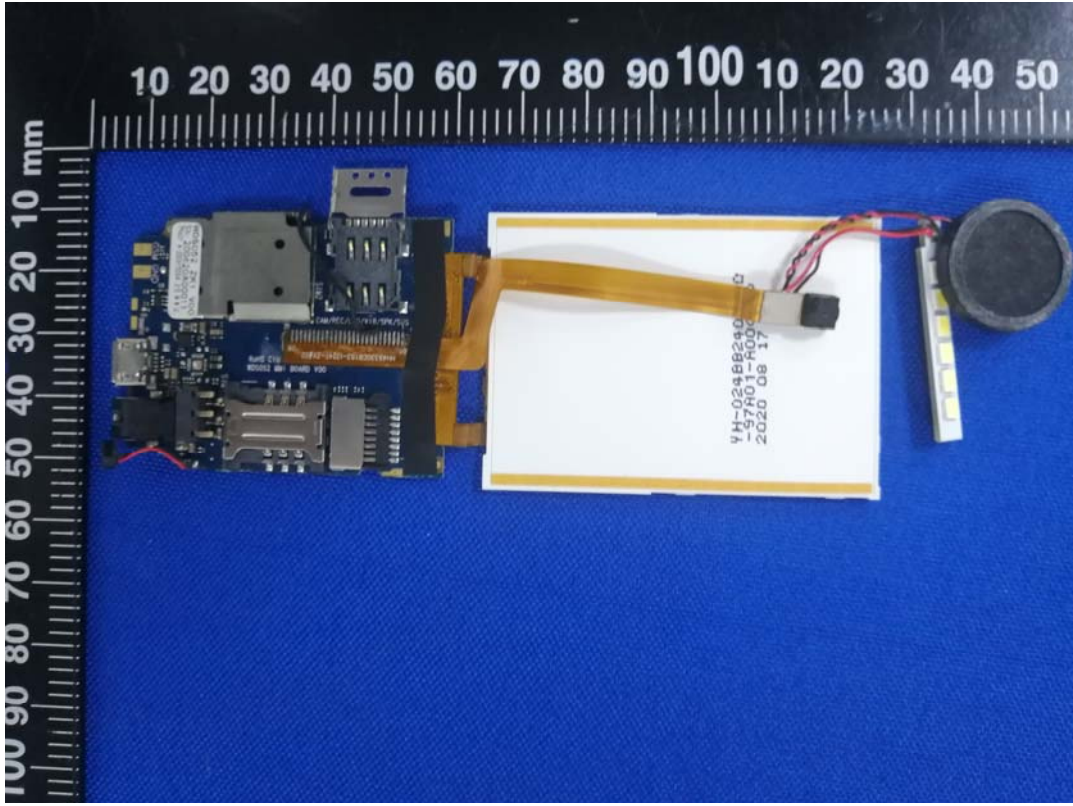
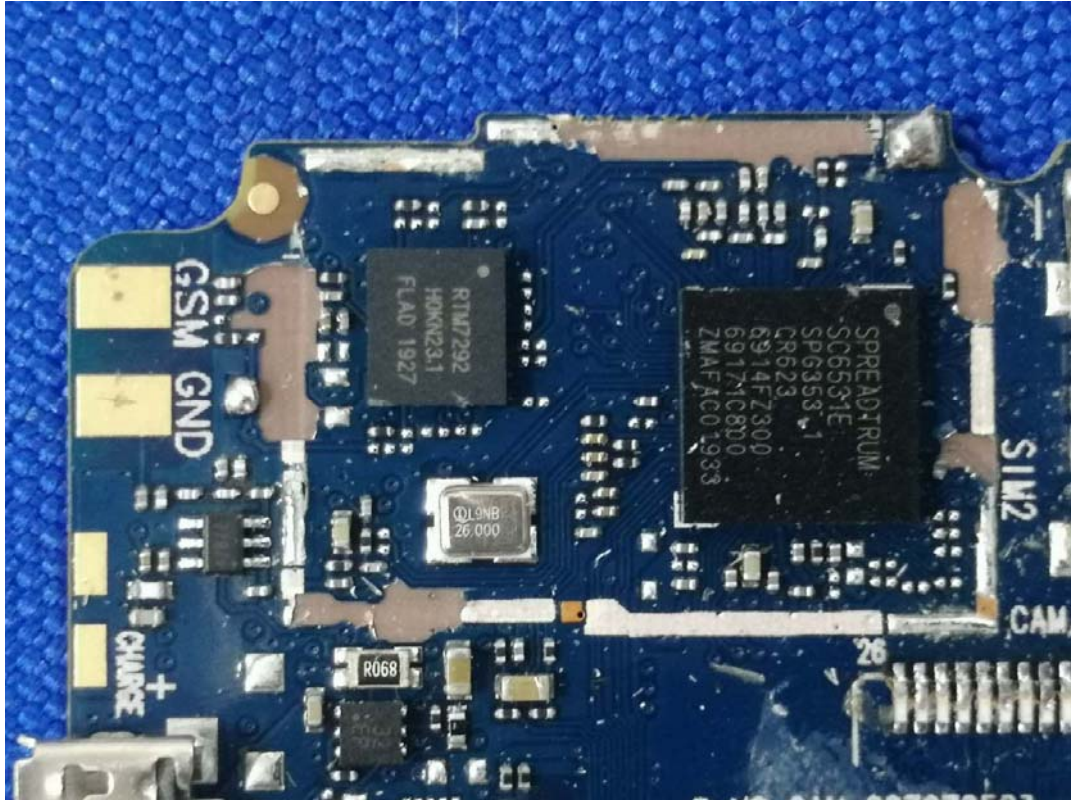


EXHIBIT C - EUT INTERNAL PHOTOGRAPHS





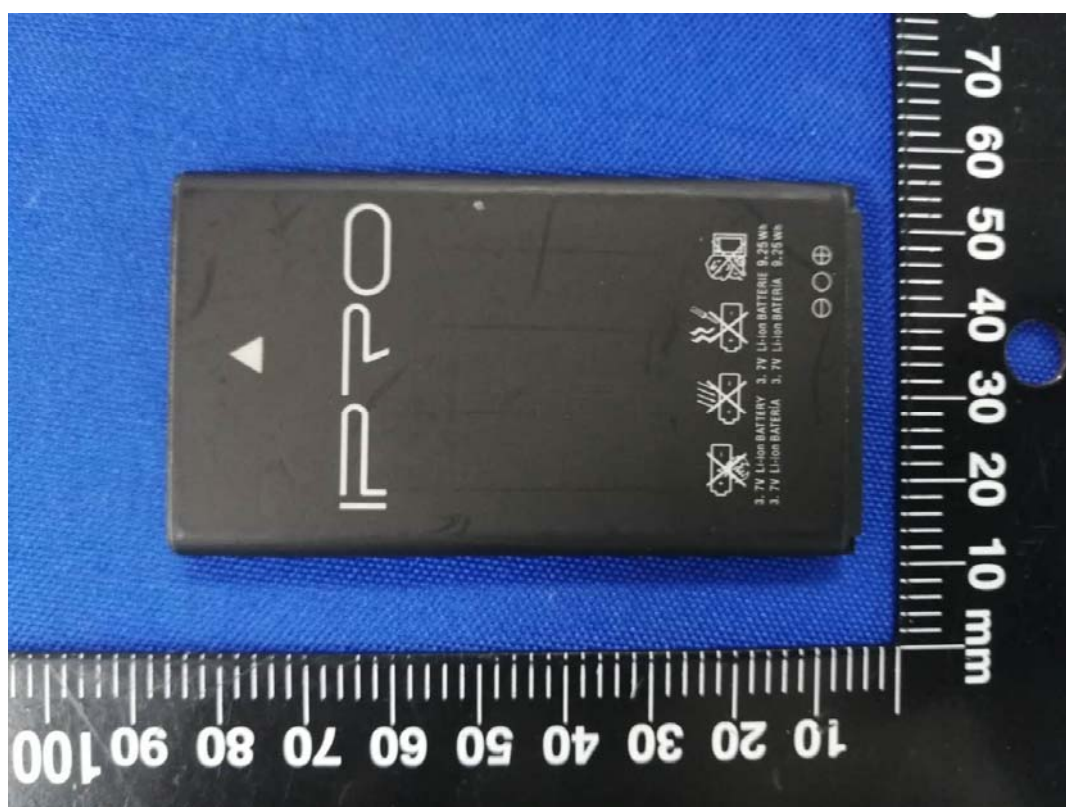




2G ANT



BT ANT





PPO

Li-ion Rechargeable Battery
2500 mAh Model: P1
Restrictive Voltage: 3.7V
Charging Voltage: 4.2V

⚠ Caution:

- Use the authorized charger only.
- Never disassemble by yourself.
- Never short-circuit the battery.
- Dispose the battery properly.
- Do not expose battery to open flames, could cause explosion.

GB/T 18287-2000










MADE IN CHINA

10 20 30 40 50 60 70 80 90 100 110 120

0 10 20 30 40 50 60 70 80 90 100 110 120 mm