



SIEMIC, INC.

Accessing global markets

Title: EMC Test Report for GSM Mobile Phone
Main Model: i5233
Serial Model: N/A
To: FCC Part 15 Subpart B Class B: 2013 , ANSI C63.4:2009

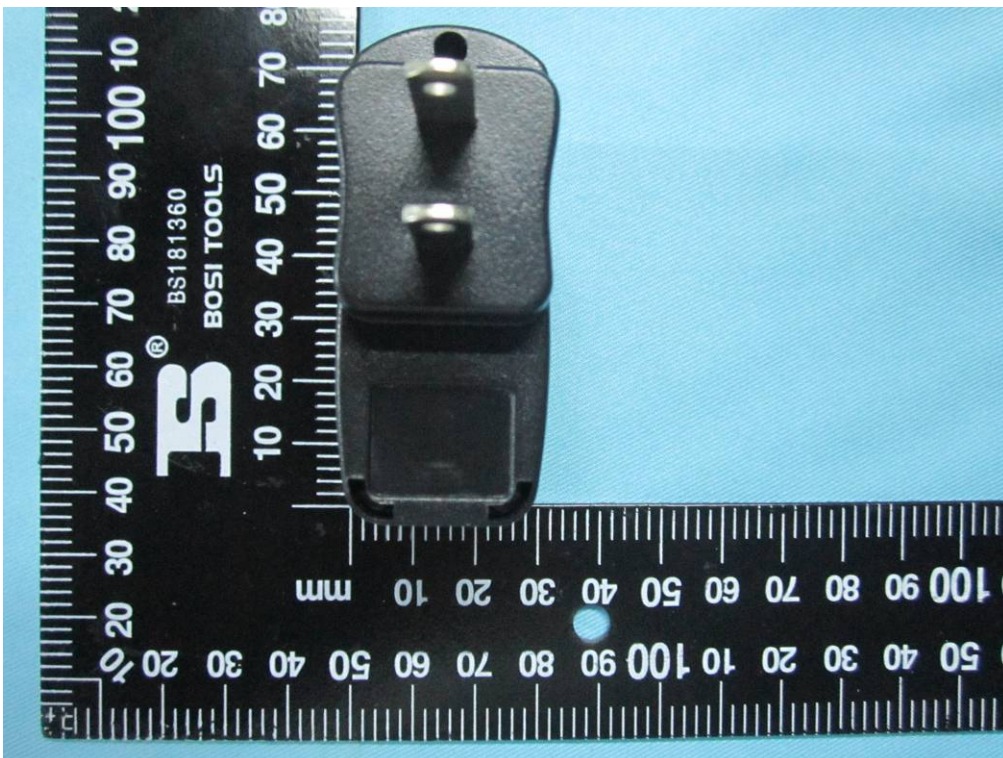
Report No.: 14070224-FCC-E1
Issue Date: May 27, 2014
Page: 19 of 35
www.siemic.com
www.simmic.com.cn

Annex B. EUT AND TEST SETUP PHOTOGRAPHS

Annex B.i. Photograph 1: EUT External Photo



Whole Package - Top View



Adapter - Front View



SIEMIC, INC.

Accessing global markets

Title: EMC Test Report for GSM Mobile Phone

Main Model: i5233

Serial Model: N/A

To: FCC Part 15 Subpart B Class B: 2013 , ANSI C63.4:2009

Report No.: 14070224-FCC-E1

Issue Date: May 27, 2014

Page: 20 of 35

www.siemmic.com

www.simmic.com.cn



EUT - Front View



EUT - Rear View



SIEMIC, INC.

Accessing global markets

Title: EMC Test Report for GSM Mobile Phone
Main Model: i5233
Serial Model: N/A
To: FCC Part 15 Subpart B Class B: 2013 , ANSI C63.4:2009

Report No.: 14070224-FCC-E1
Issue Date: May 27, 2014
Page: 21 of 35
www.siemic.com
www.siemic.com.cn



EUT - Top View



EUT - Bottom View



SIEMIC, INC.

Accessing global markets

Title: EMC Test Report for GSM Mobile Phone
Main Model: i5233
Serial Model: N/A
To: FCC Part 15 Subpart B Class B: 2013 , ANSI C63.4:2009

Report No.: 14070224-FCC-E1
Issue Date: May 27, 2014
Page: 22 of 35
www.siemic.com
www.siemic.com.cn



EUT - Left View



EUT - Right View