



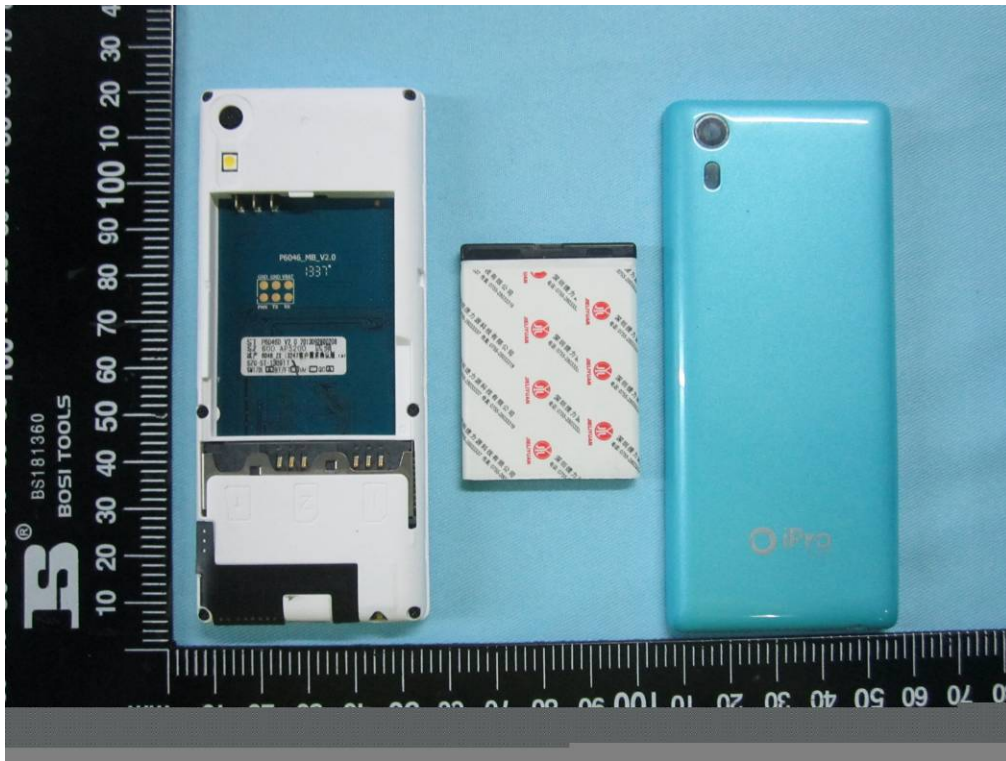
SIEMIC, INC.

Accessing global markets

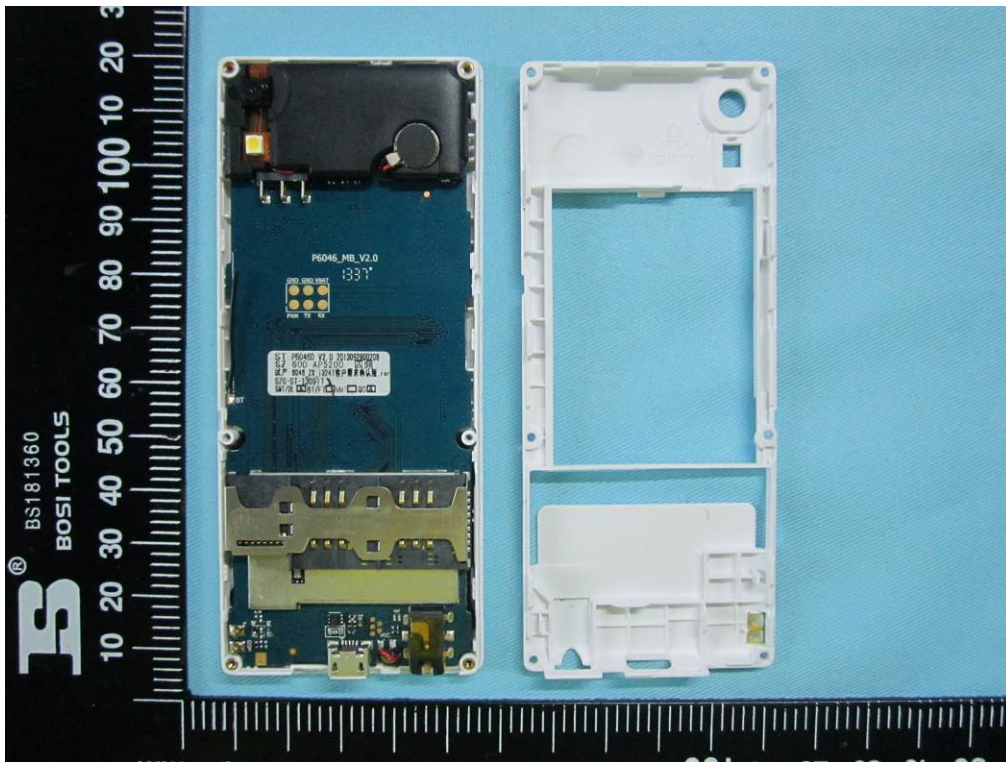
Title: EMC Test Report for GSM Mobile Phone
Main Model: i3247
Serial Model: N/A
To: FCC Part 15 Subpart B Class B: 2013 , ANSI C63.4:2009

Report No.: 14070216-FCC-E1
Issue Date: May 22, 2014
Page: 23 of 36
www.siemmic.com
www.simmic.com.cn

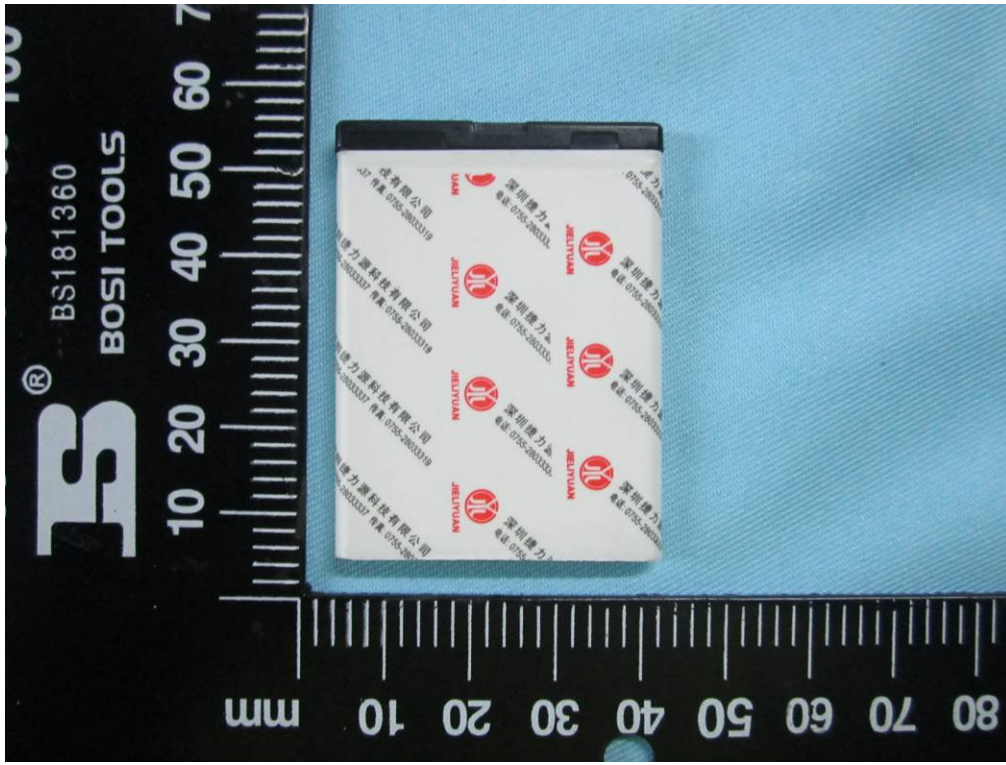
Annex B.ii. Photograph 2: EUT Internal Photo



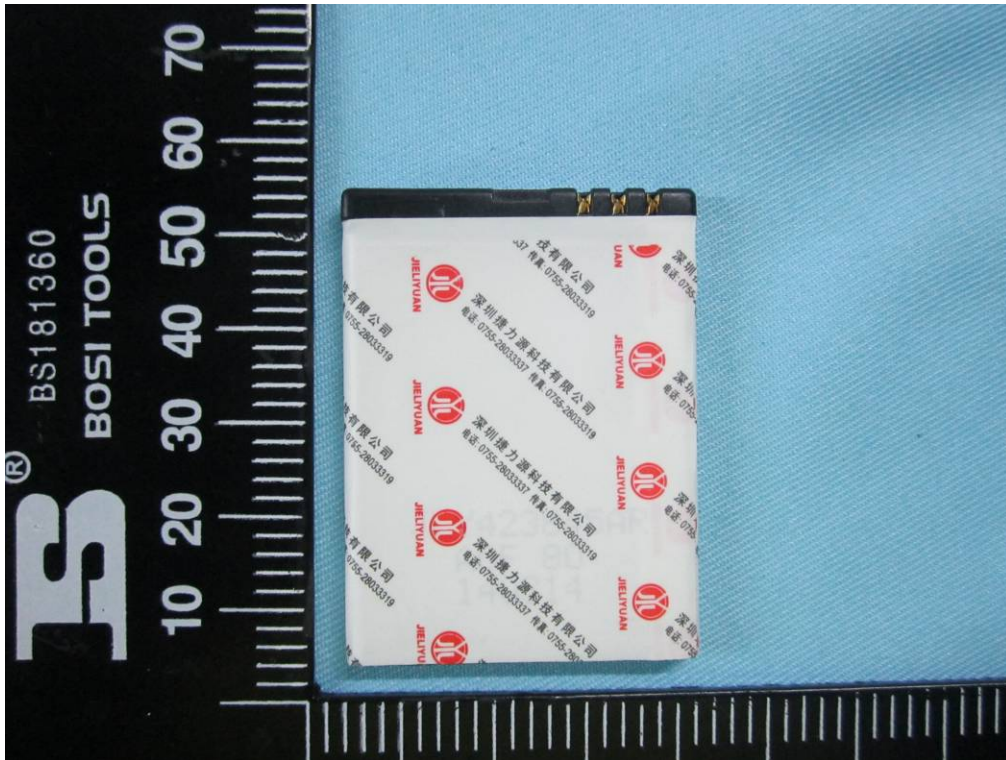
Cover Off - Top View 1



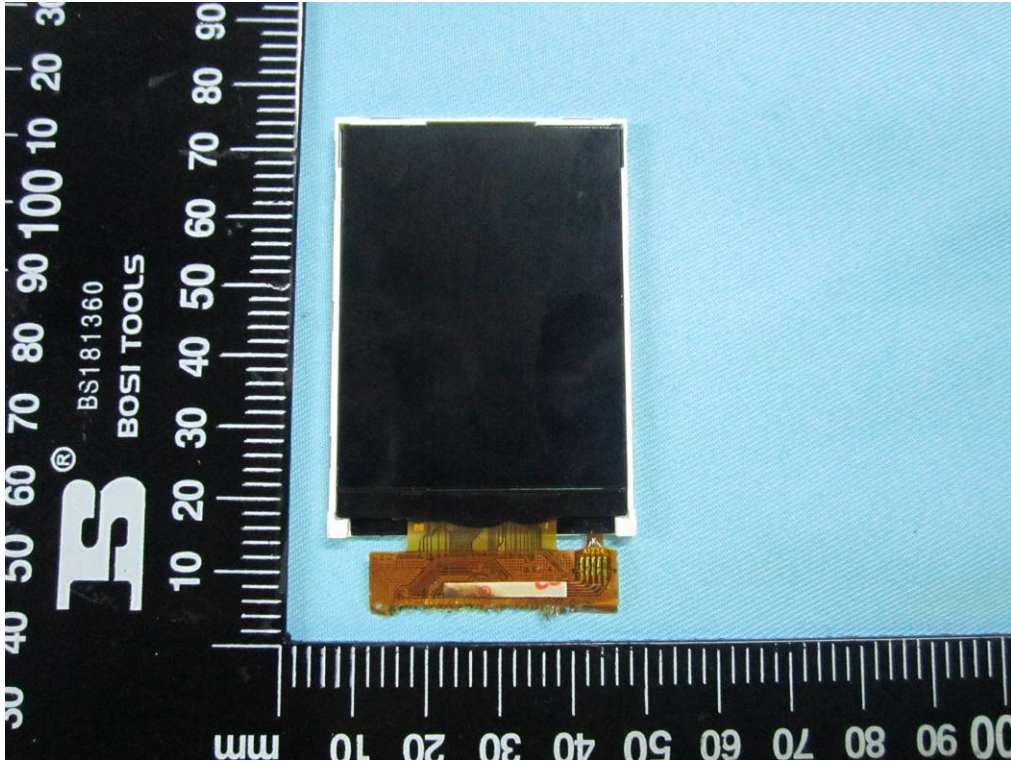
Cover Off - Top View 2



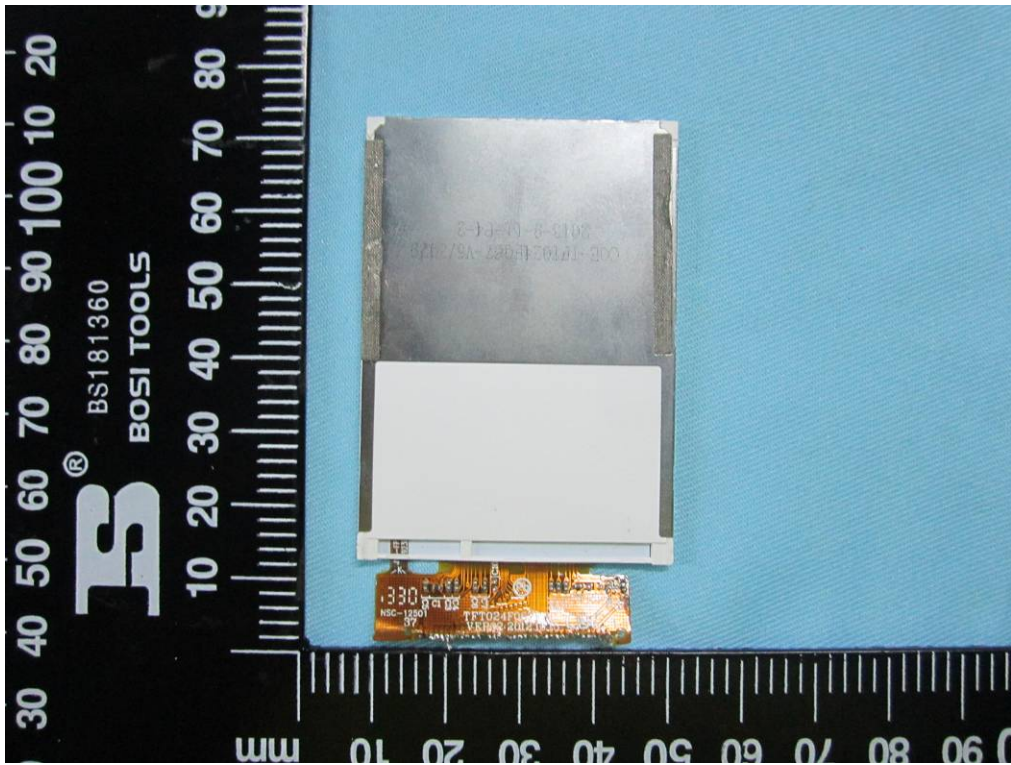
Battery - Top View



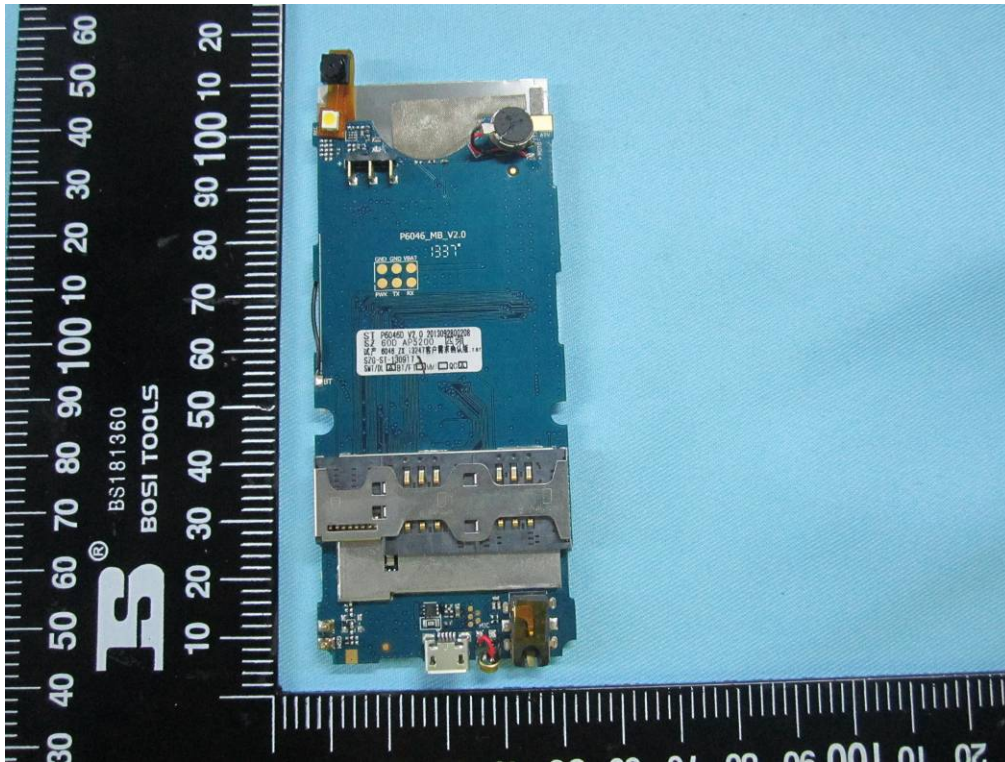
Battery - Bottom View



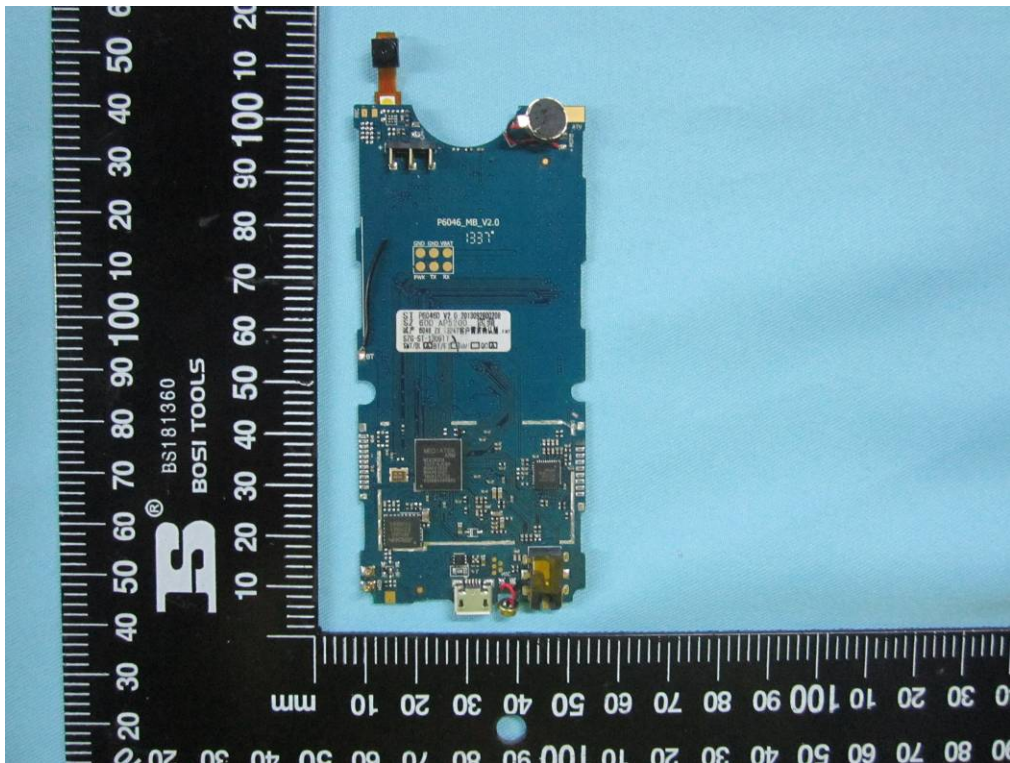
LCD – Front View



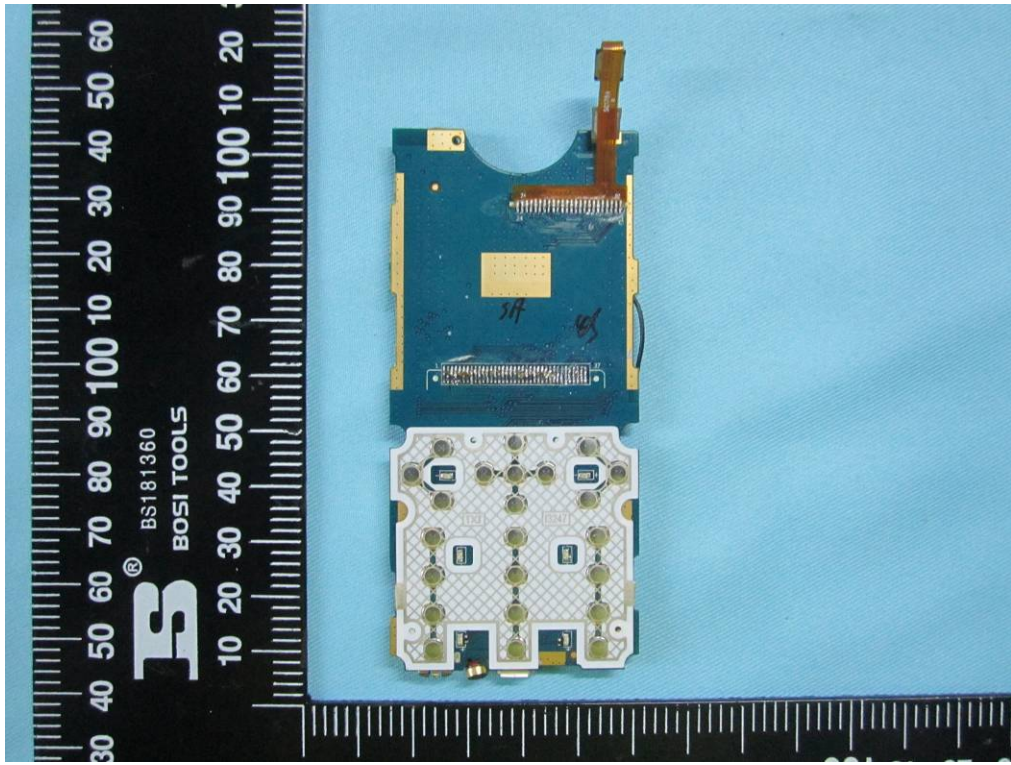
LCD – Rear View



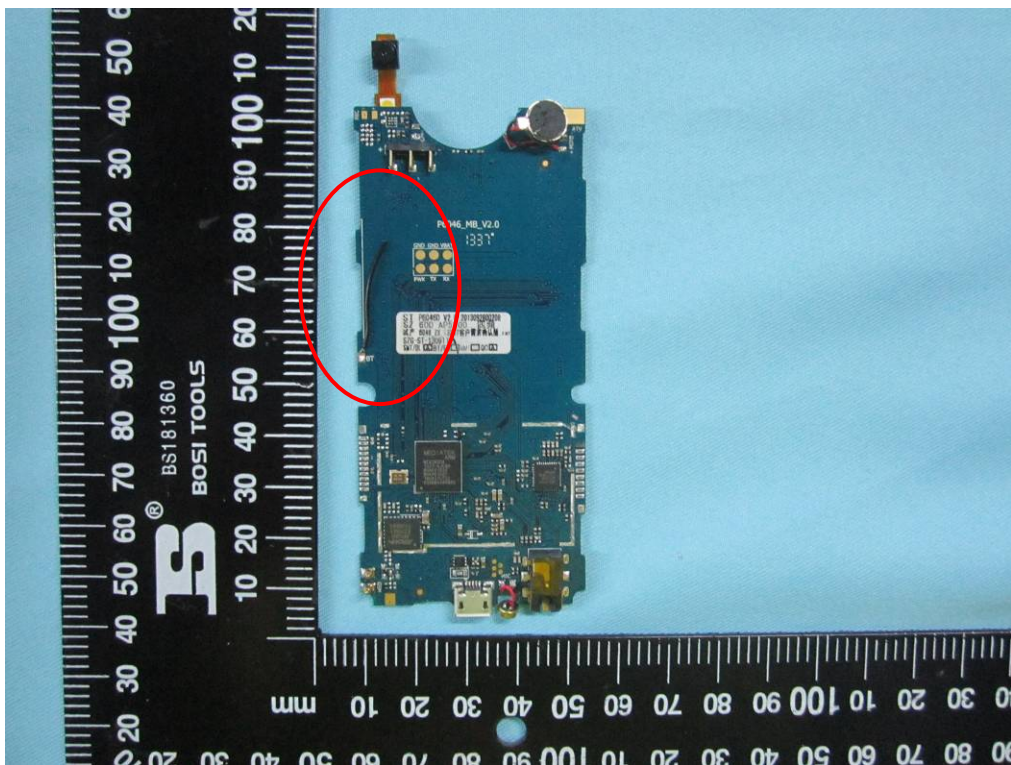
Mainboard With Shielding - Front View



Mainboard Without Shielding - Front View



Mainboard – Rear View



BT Antenna View

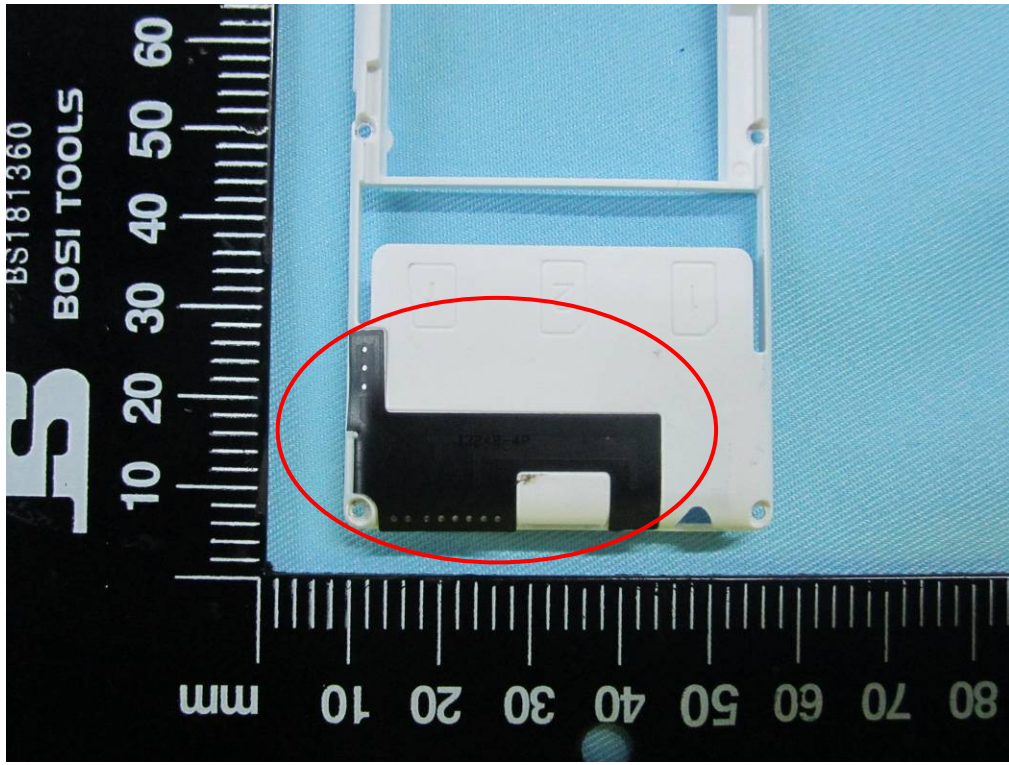


SIEMIC, INC.

Accessing global markets

Title: EMC Test Report for GSM Mobile Phone
Main Model: i3247
Serial Model: N/A
To: FCC Part 15 Subpart B Class B: 2013 , ANSI C63.4:2009

Report No.: 14070216-FCC-E1
Issue Date: May 22, 2014
Page: 28 of 36
www.siemic.com
www.siemic.com.cn



GSM Antenna View