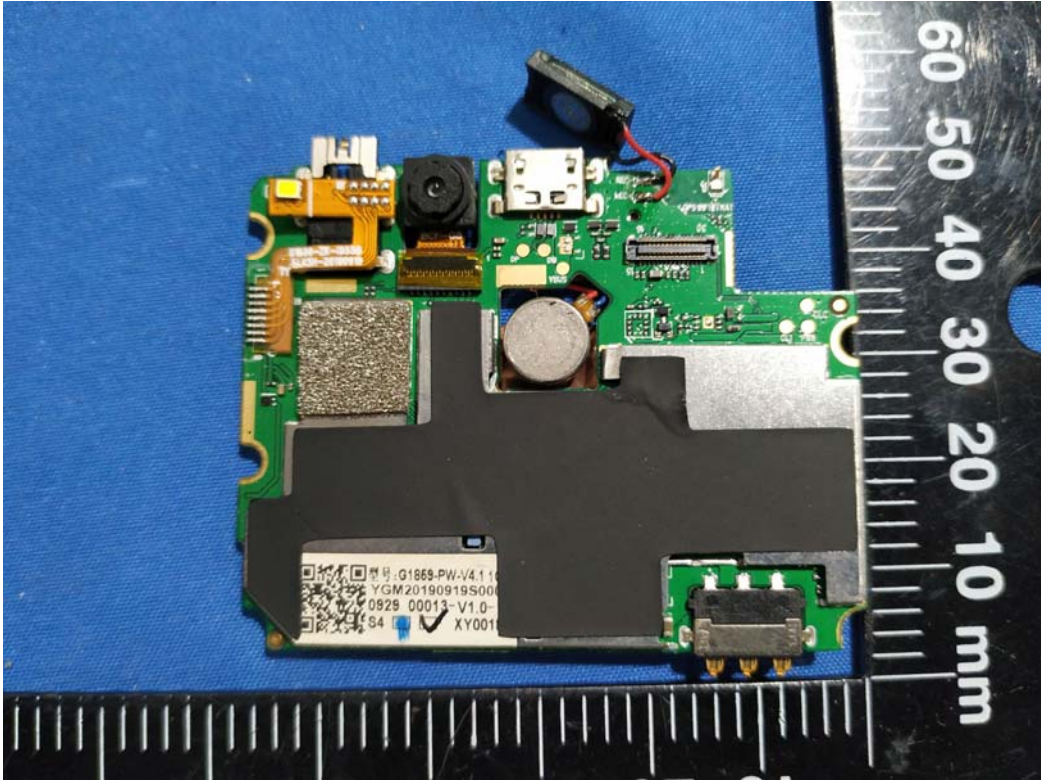
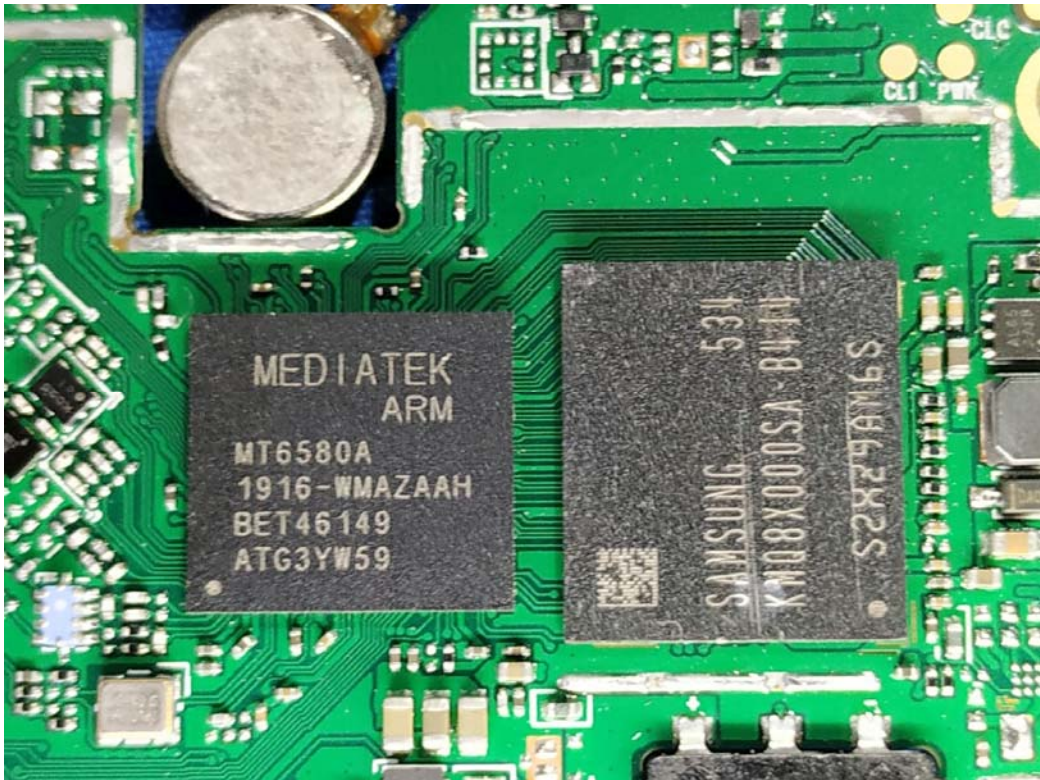
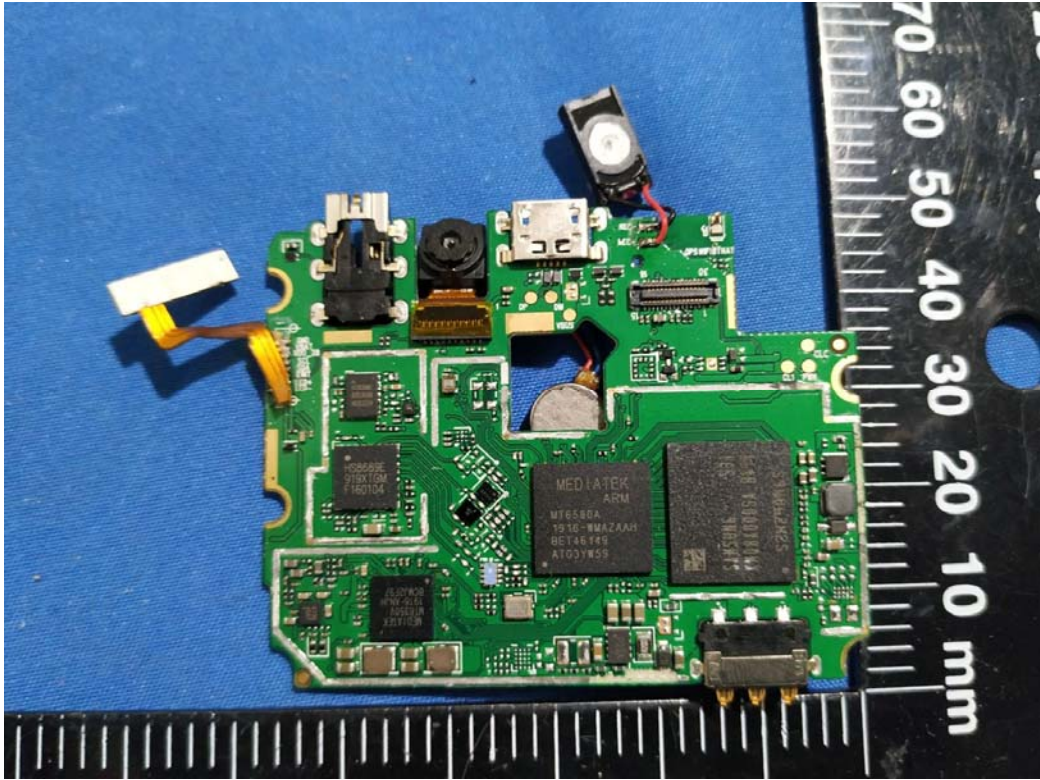
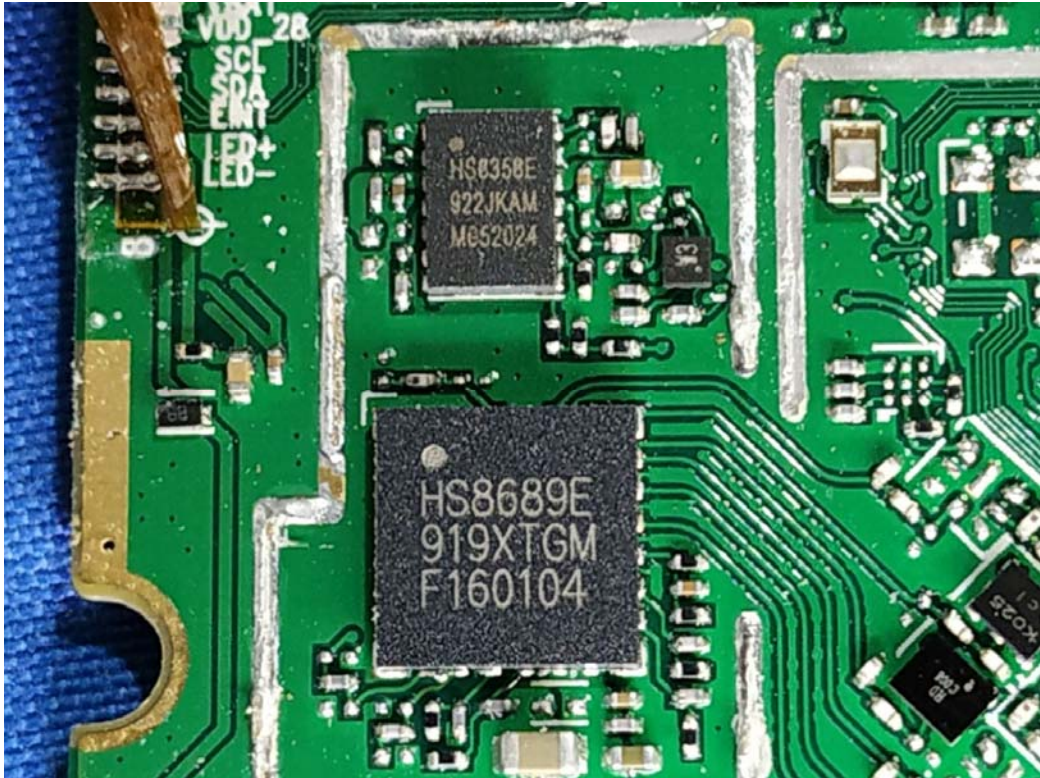


**EXHIBIT C - EUT INTERNAL PHOTOGRAPHS**

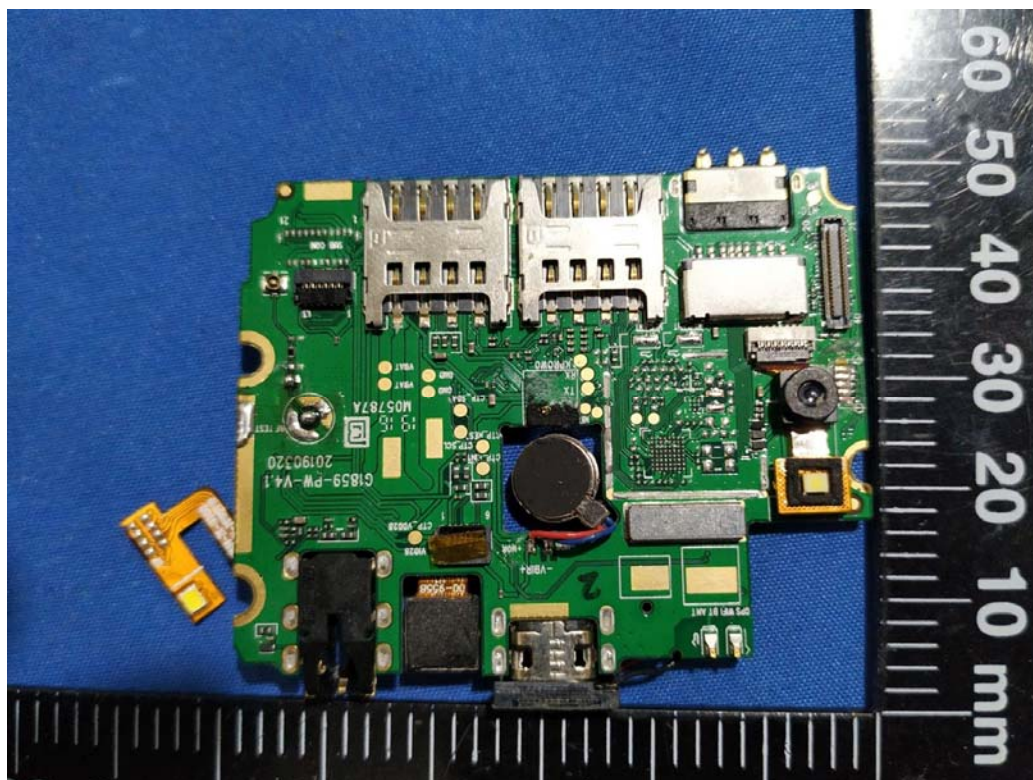








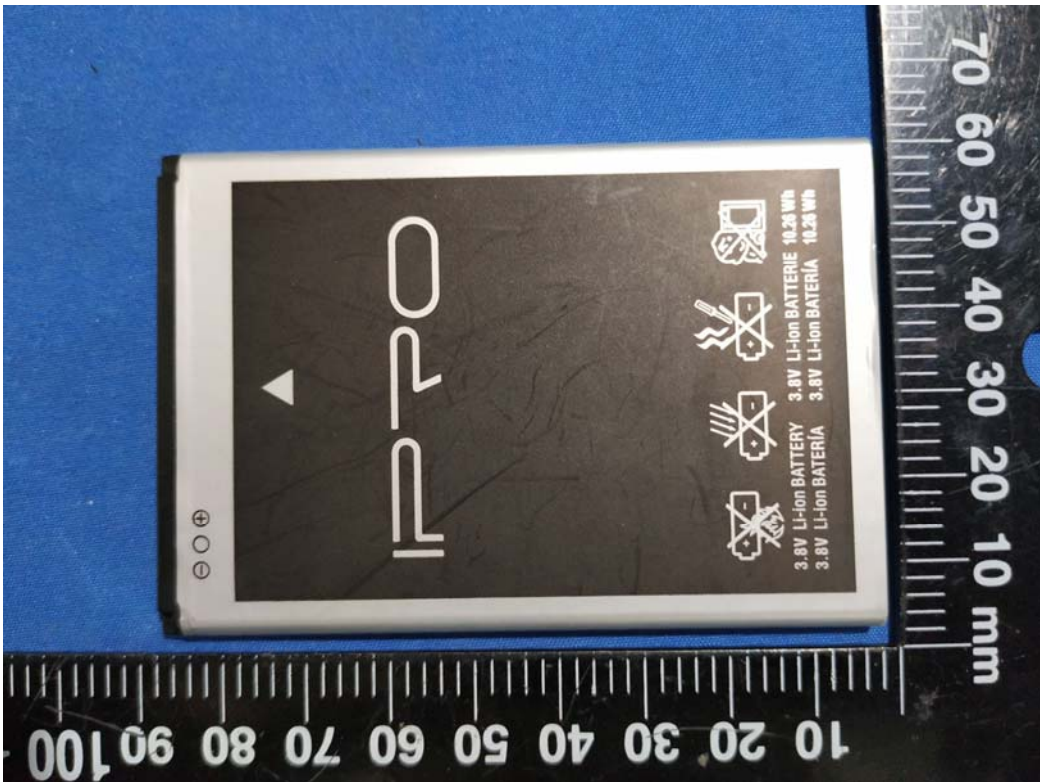
Chip



BT/Wifi Antenna



2G/3G Antenna



Li-ion Rechargeable Battery

2700mAh Model: Amber8S

Restrictive Voltage: 4.35V

Charging Voltage: 3.8V

⚠ Caution:

- Use the authorized charger only.
- Never disassemble by yourself.
- Never short-circuit the battery.
- Dispose the battery properly.
- Do not expose battery to open flames, could cause explosion.

GB/T 18287-2013



MADE IN CHINA