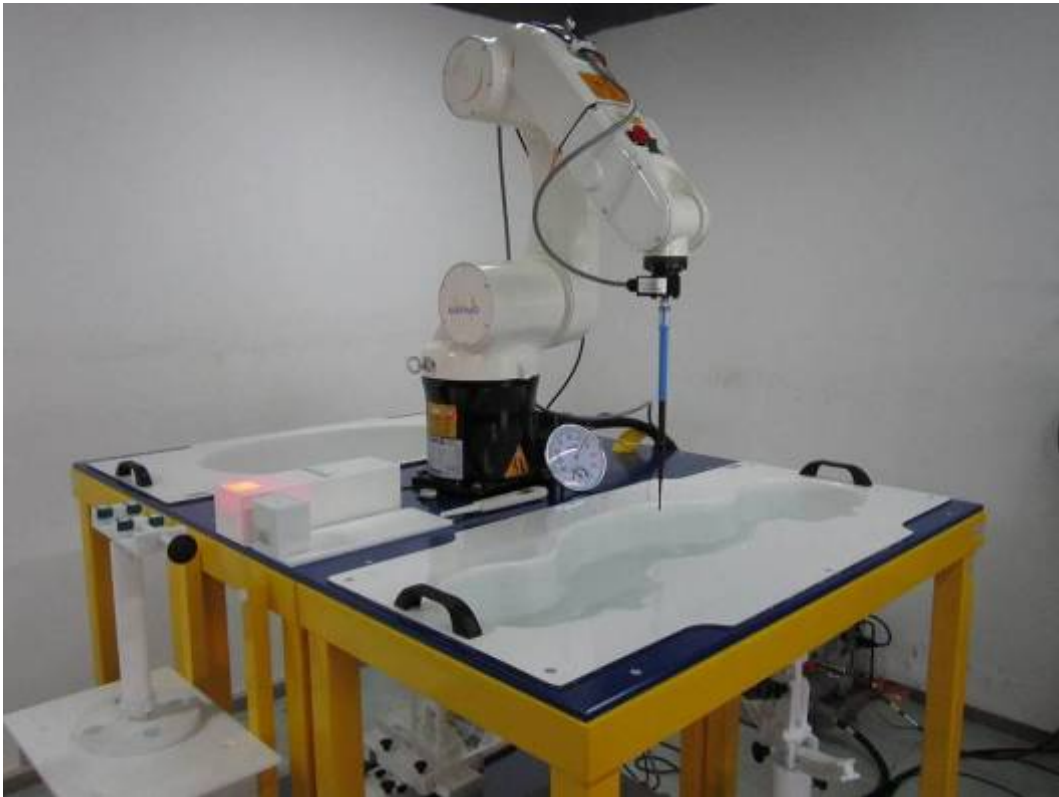


**Annex B SAR System PHOTOGRAPHS**

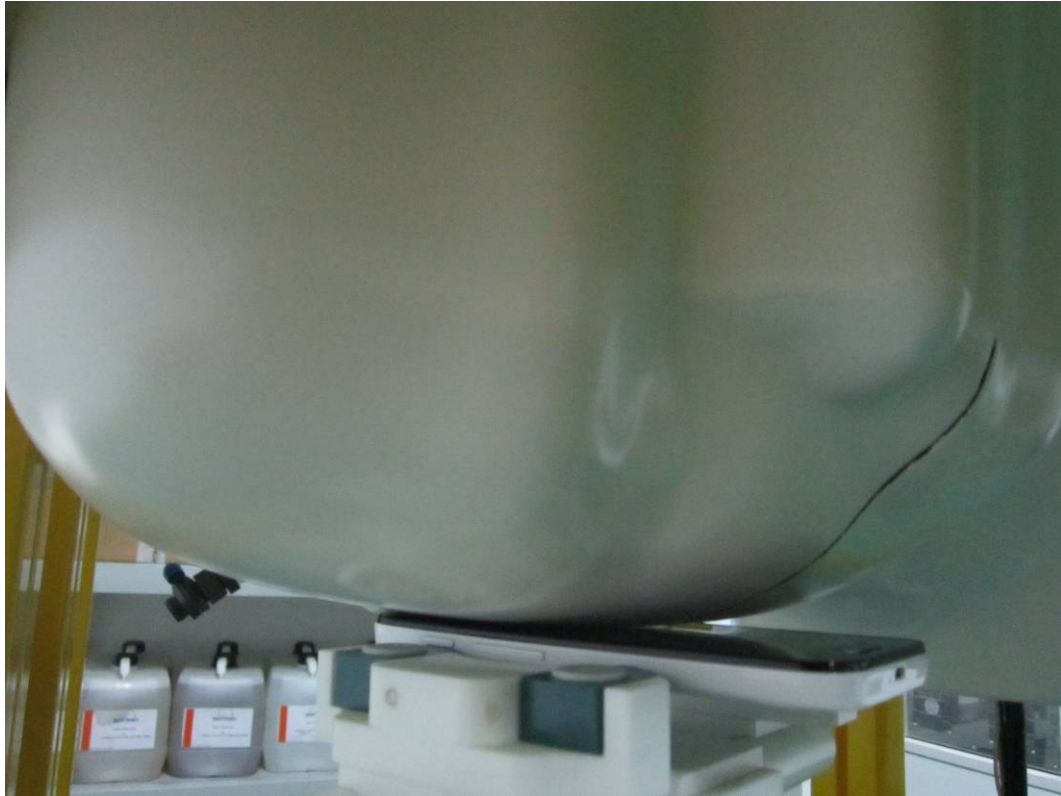


Liquid depth  $\geq$  15cm

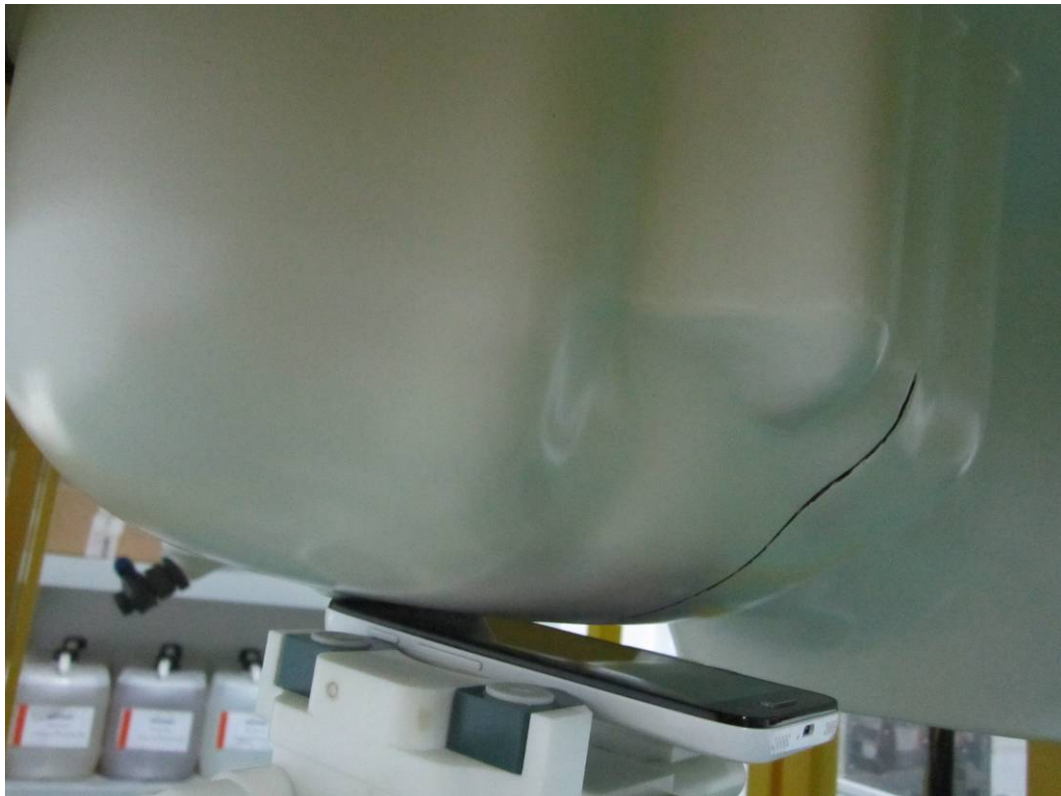


**Annex C SETUP PHOTOGRAPHS**

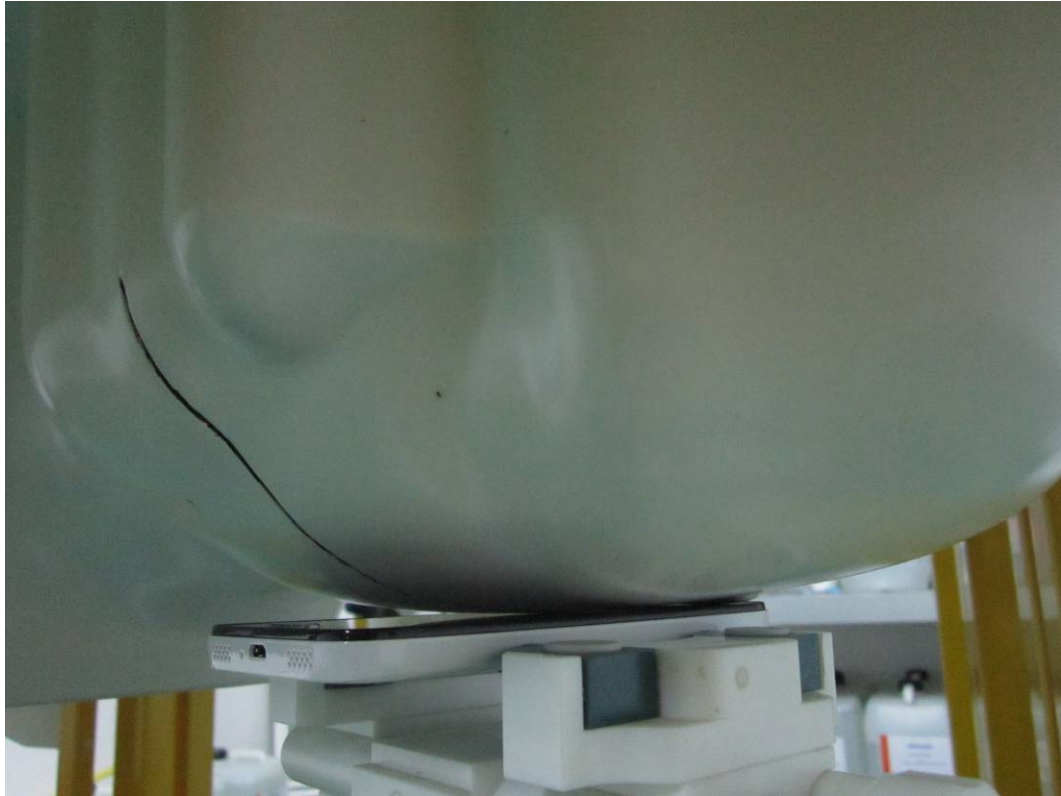
**Right Head Touch View**



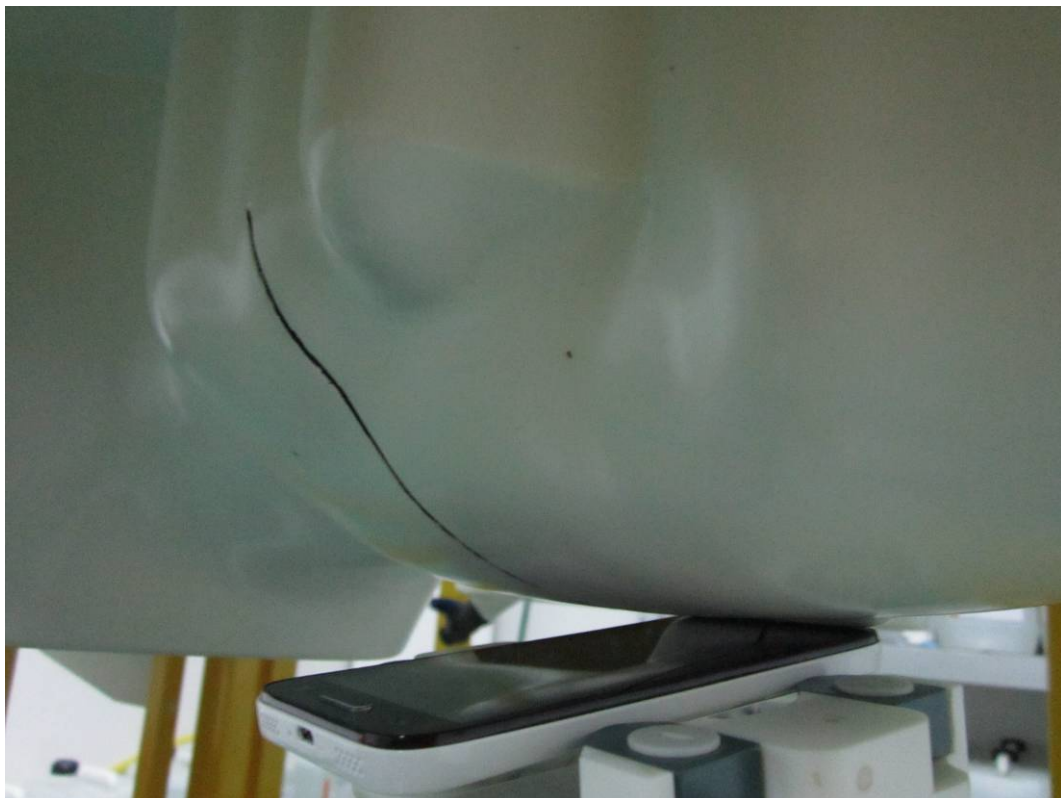
**Right Head Tilt View**



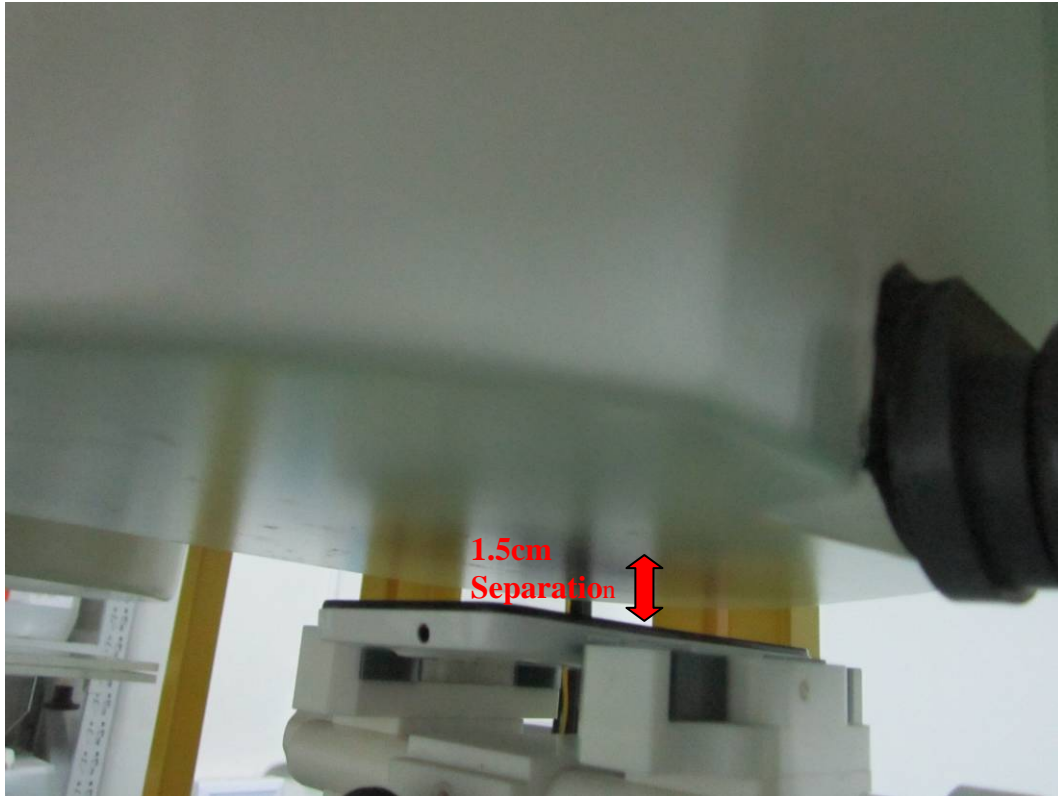
**Left Head Touch View**



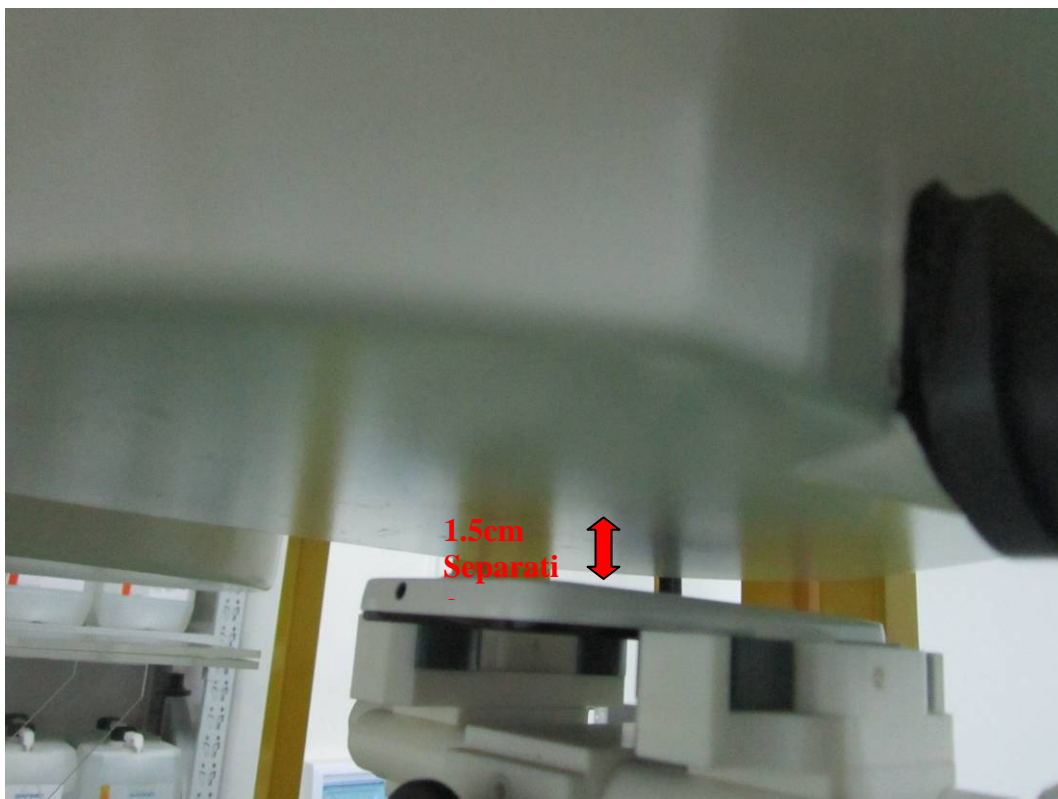
**Left Head Tilt View**



**Body Setup Photo (LCD UP)**

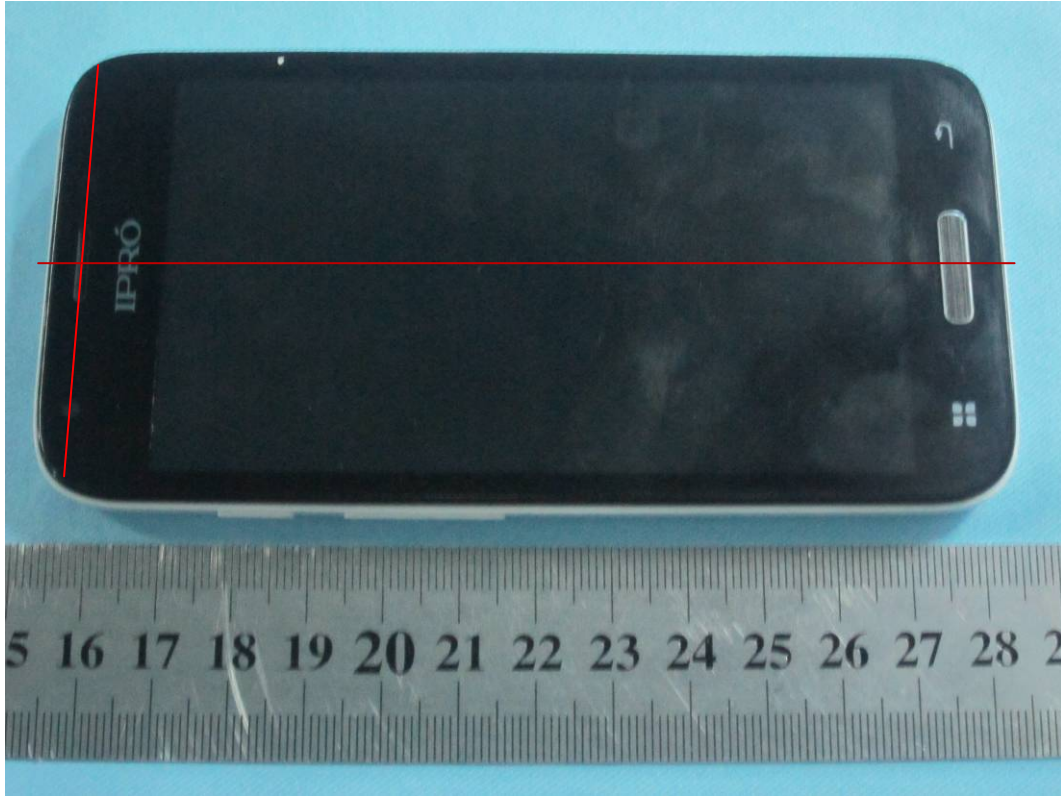


**Body Setup Photo (LCD DOWN)**



**Annex D EUT PHOTOGRAPHS**

**EUT-Front Side View**



**EUT-Back Side View**



### EU-Uncover View



### EU-Top View

