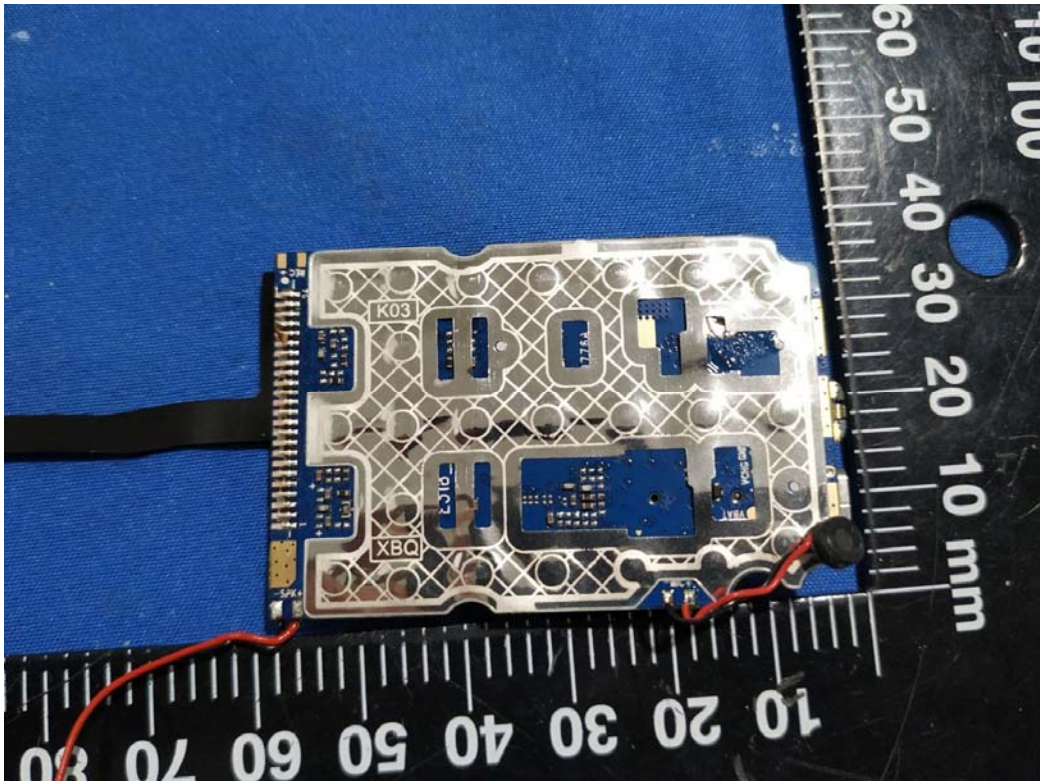
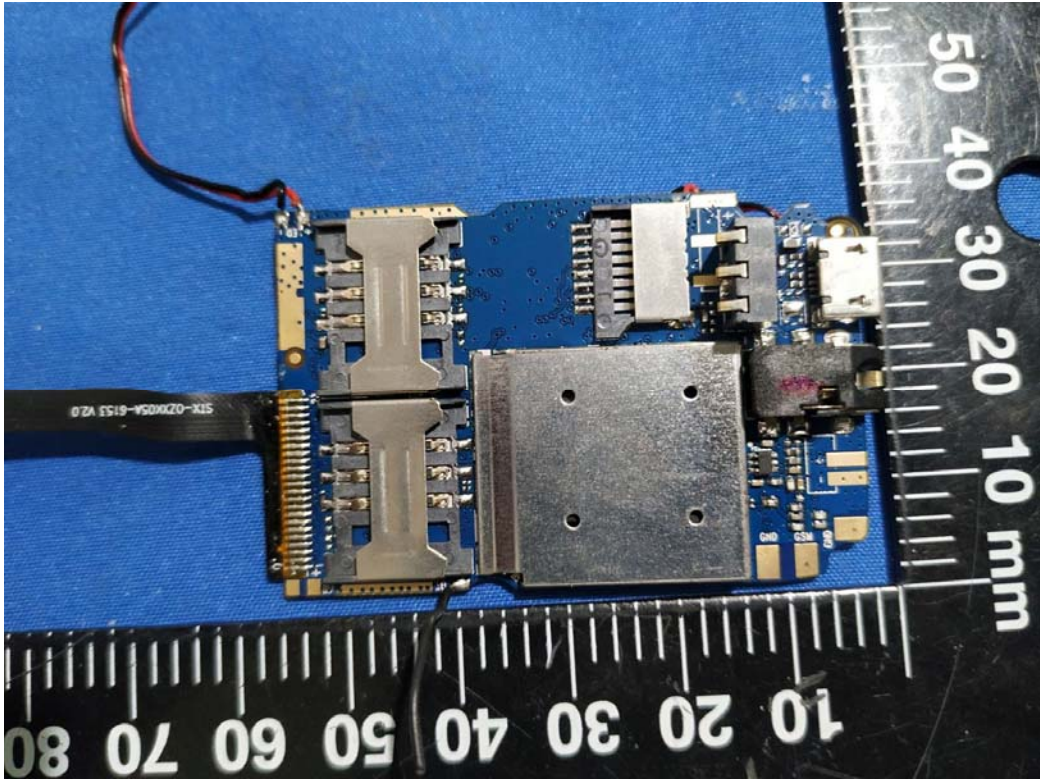
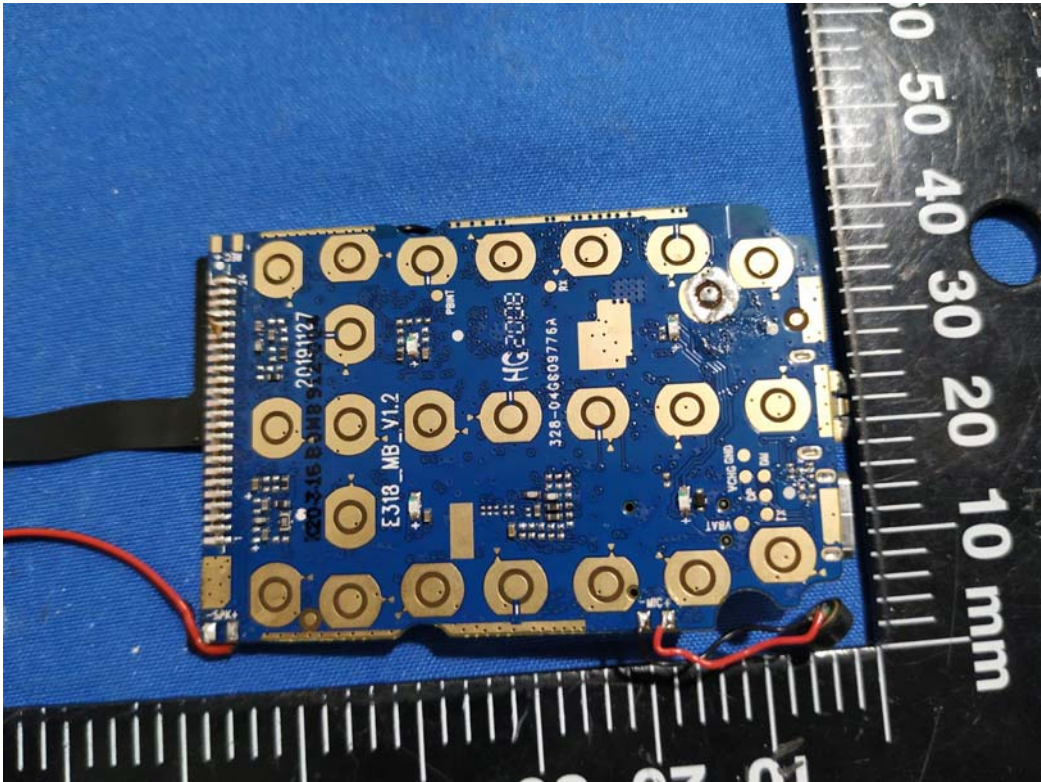
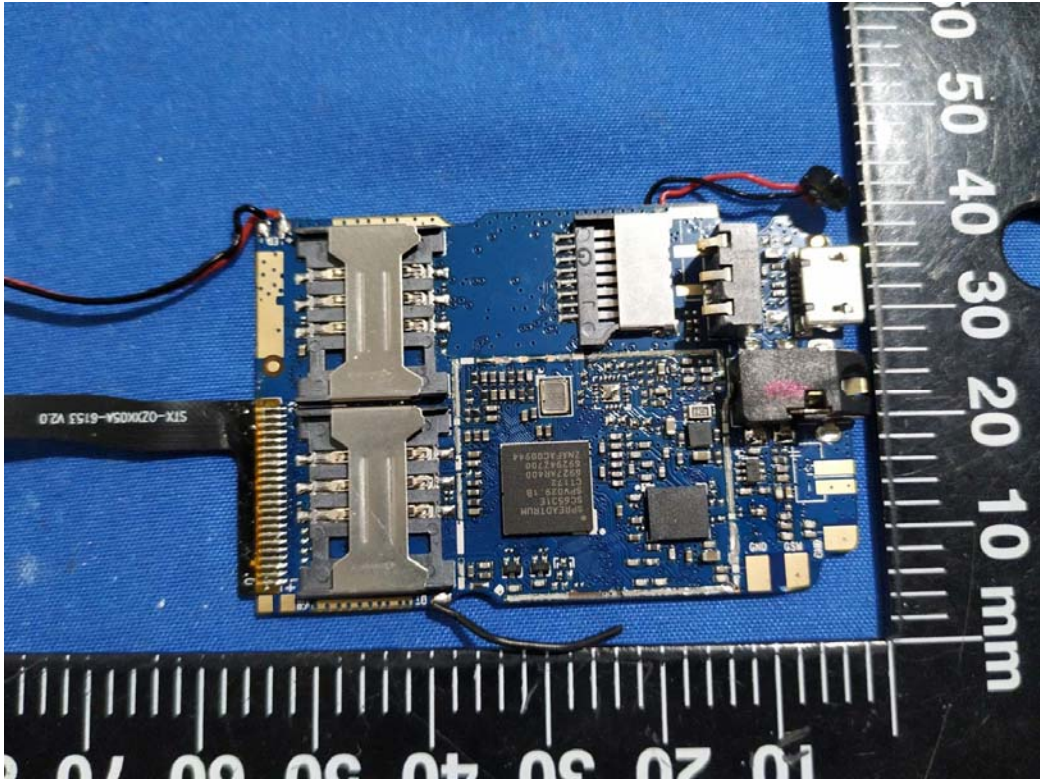


# EXHIBIT C - EUT INTERNAL PHOTOGRAPHS

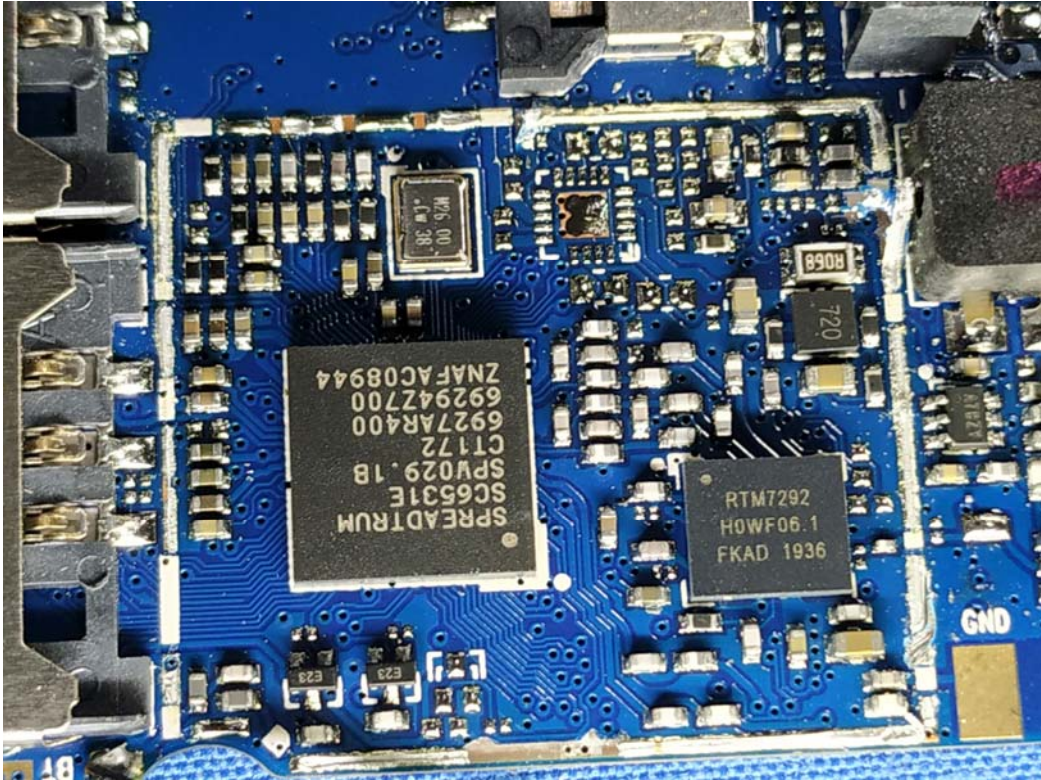




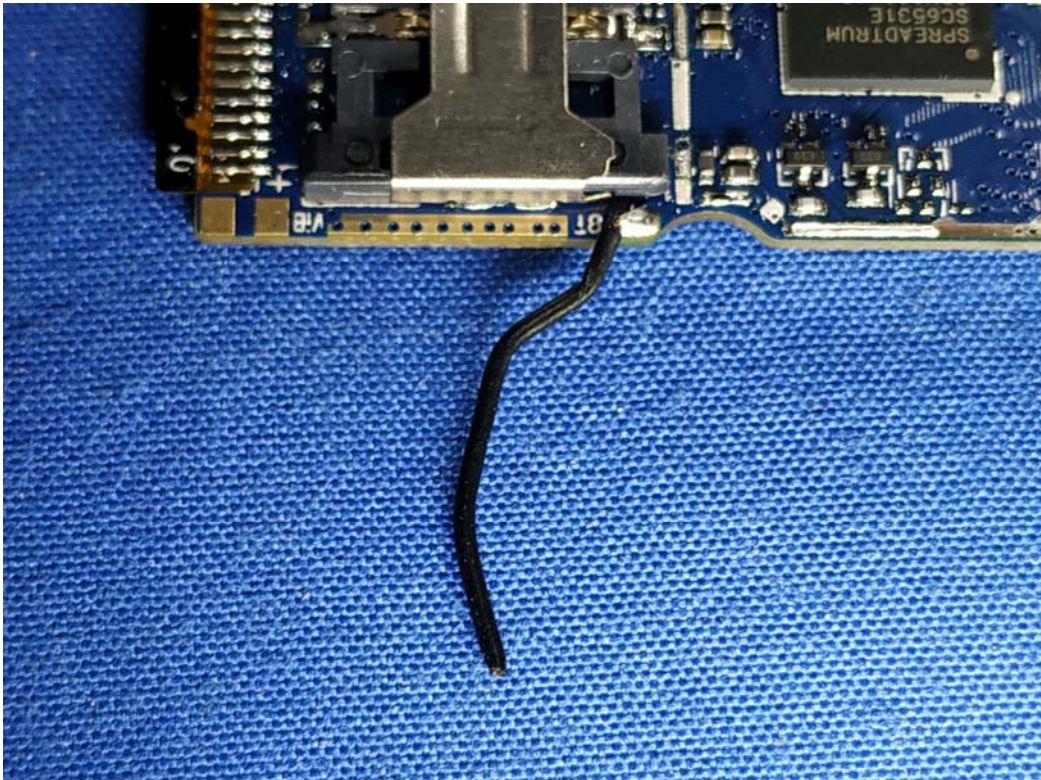






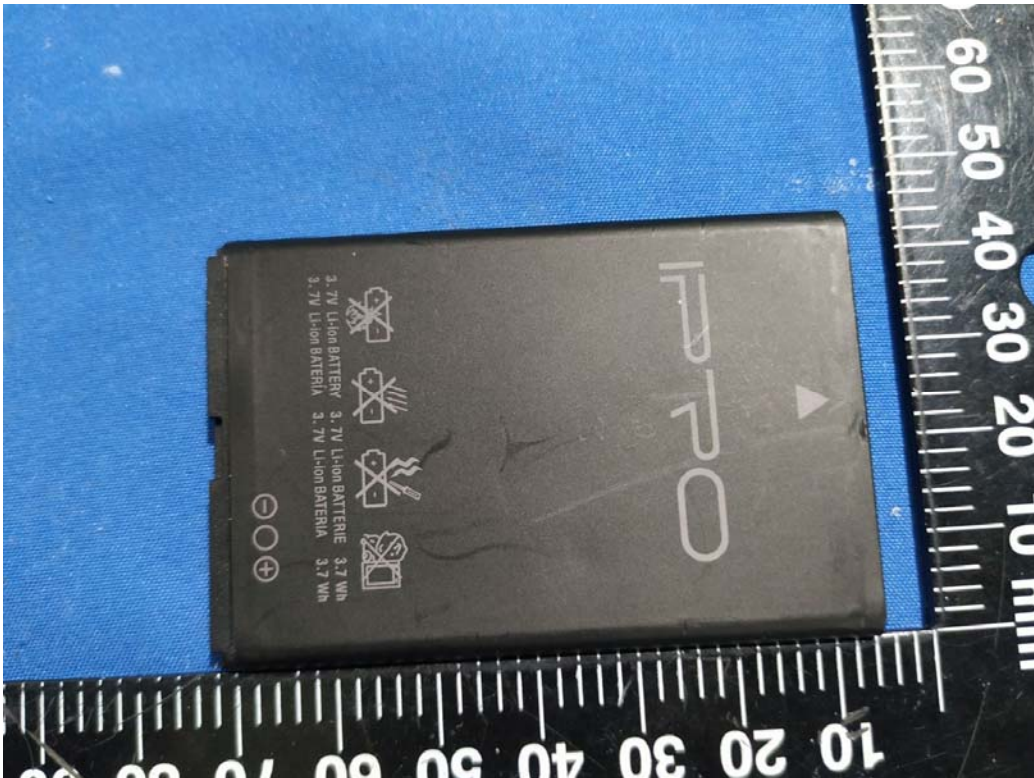
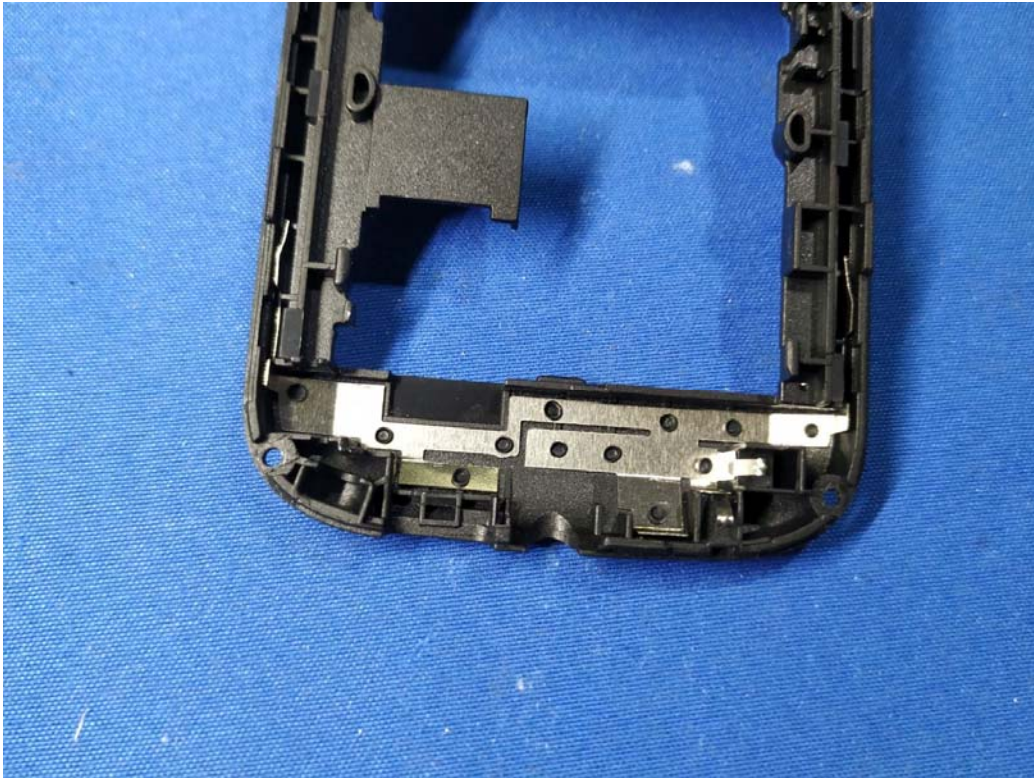


*BT Antenna*





*GSM Antenna*





IP-PO

Li-ion Rechargeable Battery  
1000mAh Model: BP-4L  
Restrictive Voltage: 4.2V  
Charging Voltage: 3.7V

- △ Caution:
- Use the authorized charger only.
  - Never disassemble by yourself.
  - Never short-circuit the battery.
  - Dispose the battery properly.
- Do not expose battery to open flames, could cause explosion.

GB/T 18287-2000

MADE IN CHINA