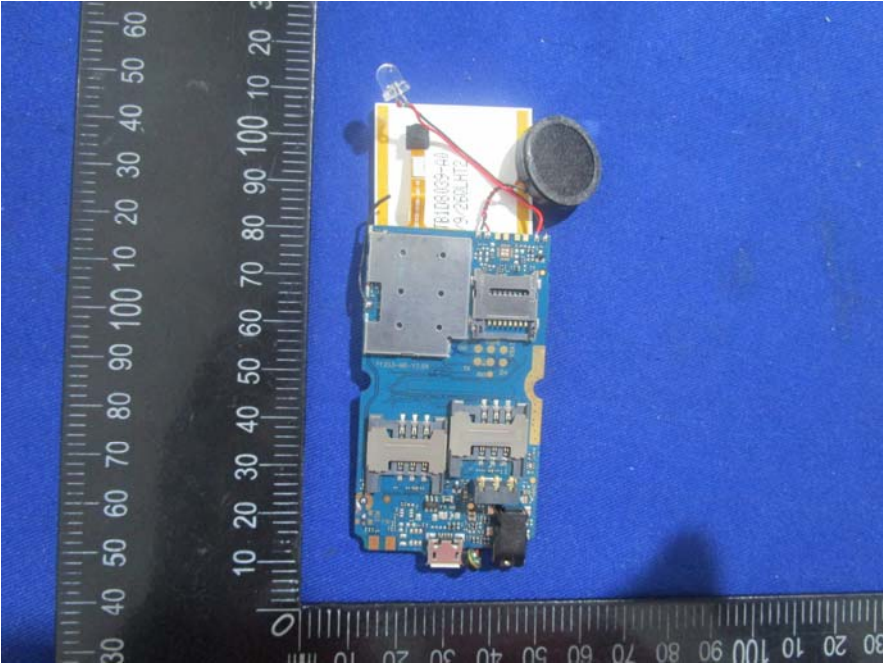
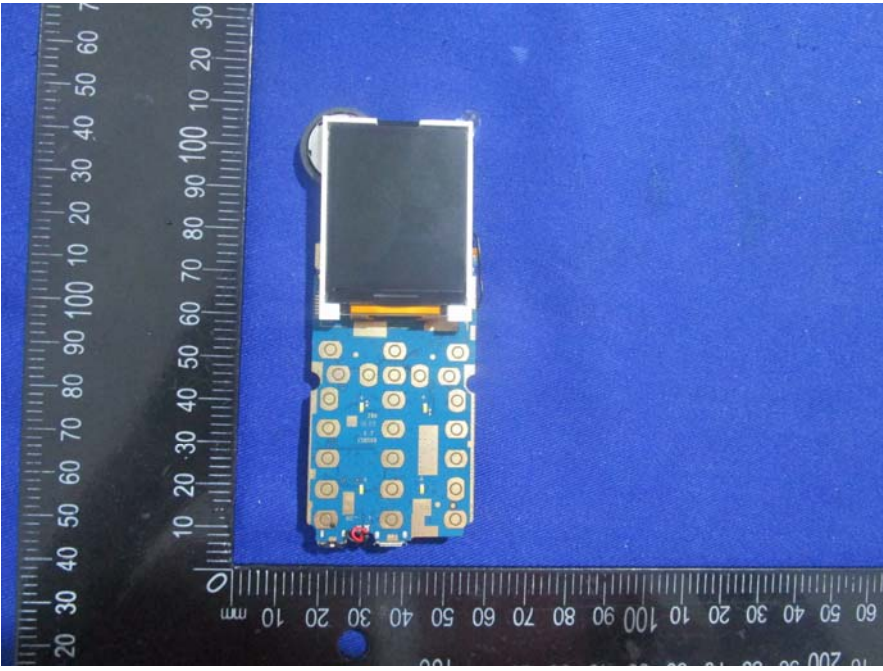
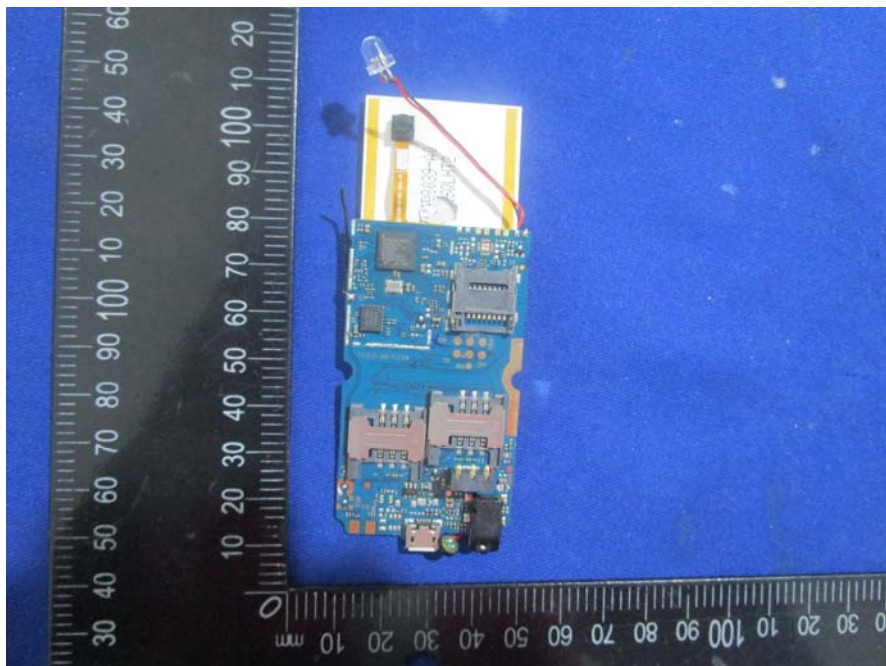


EXHIBIT C - EUT INTERNAL PHOTOGRAPHS



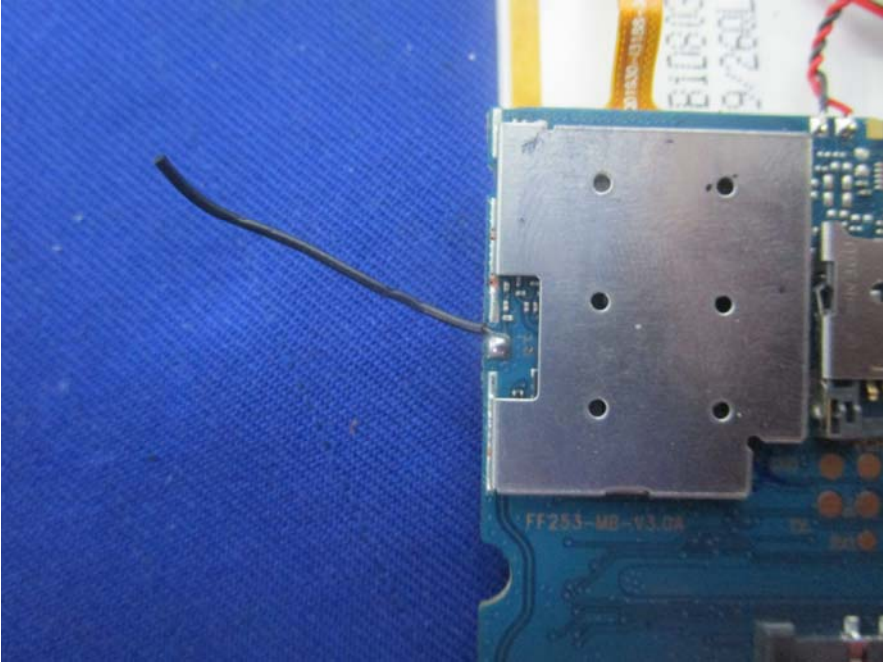




GSM Antenna



Bluetooth Antenna





IPRÓ

Li-ion Rechargeable Battery
500 mAh Model: BL-5C
Restrictive Voltage: 3.7V
Charging Voltage: 4.2V

- ⚠ Caution:
- Use the authorized charger only.
 - Never disassemble by yourself.
 - Never short-circuit the battery.
 - Dispose the battery properly.
 - Do not expose battery to open flames, could cause explosion.

GB/T 18287-2000



MADE IN CHINA