



# AVAdin

---

## Quick Start Guide



wonderful  
(주)원더풀플랫폼platform

## 01. Before Use

- Make sure to read this user manual before using the product to ensure safe and correct use.
- The images in this user manual may differ from the actual appearance. The content is subject to change without prior notice for the purpose of improving product performance.
- In order to use the product in combination with a mobile device, make sure to check whether the mobile device is compatible with the product.

### Precautions During Use

- We cannot be held liable for any injuries or damages caused by failure to follow the safety precautions.
- Do not arbitrarily disassemble or modify the product.
- Take measures to prevent children, infants or pets from sucking on or biting the product.
- Do not connect the power cable to the product while wet.
- Do not drop the product or subject it to impact, and do not place any heavy objects on the product.
- Do not place the product inside or near a heating apparatus. Keep it in a dry place without moisture.
- Do not use or store the product in a dusty or dirty place.
- Stop using the product if you notice any unusual odor, noise, foreign matter, smoke or any unusual phenomenon concerning the product.
- Do not place any metal objects on the product.
- Be careful not to let any conductive matter (liquid, dust, metal powder, pencil lead, etc.) enter the connection part (external connector jack and plug) of the charger.
- Use an adapter that satisfies the rating.
- Install the product where it is easy to connect and disconnect the power plug. The power plug must be disconnected promptly in case of a problem. .
- Do not pull on or shake the product with excessive force. Otherwise, the product may become damaged.
- Keep the product away from areas where the signal may be affected. Metals and products that generate electromagnetic waves such as an oven may affect the signal.
- Use the product within 0°C~35°C. Do not store it at temperatures that are too low or too high. Otherwise, the product may become damaged.
- When cleaning the product, be sure to unplug the power cord and wipe the surface gently with a dry towel. Do not use chemicals or detergents (e.g. benzene, alcohol, etc.), which may deteriorate the surface and cause the coating to peel off.

## 02. Product Package

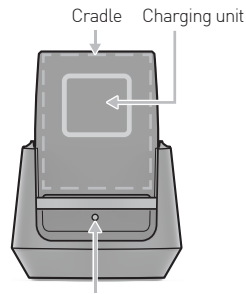


Body of the device

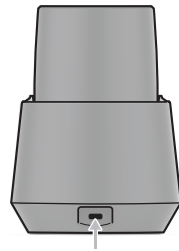


Quick Start Guide

### Parts & Their Names



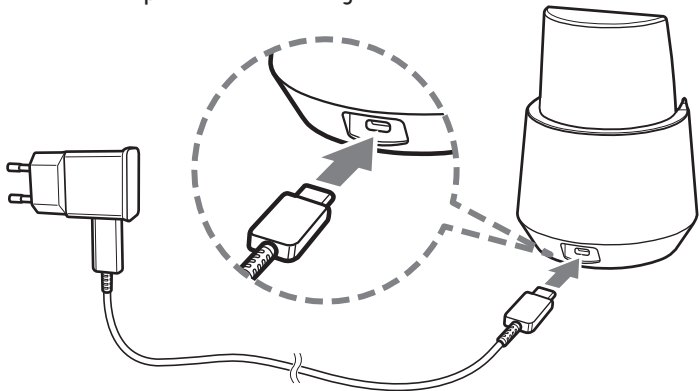
Status light



Charger connector jack (Type-C)

## 03. How to Use

### 1. Connect the product with the charger.

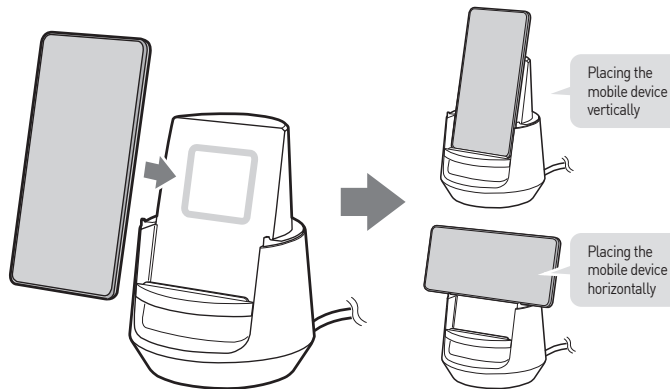


- Be sure to use an authentic KC-certified charger. Use a fast charging charger (9V1.67A, 9V/2A) for high-speed wireless charging.
- Using the 5V/2A charger will result in wireless charging at normal speed.

### 2. Please wait after connecting the charger for the motor to return to the original point.

- Use the device when the mobile device cradle turns left and right and then stops in the middle.
- If the mobile device cradle does not stop in the middle, disconnect the charger and reconnect it.
- Do not shake the product or grab it with force while it is rotating.

### 3. Place your mobile device in the center of the wireless charging cradle.



- Because magnetic induction charging technology is applied, the device may not become properly charged if there is presence of foreign matter (metallic material) between the mobile device and the product.
- In case the mobile device has a cover, wireless charging may not occur properly depending on the type of cover used.
- In the case of magnetic stripe cards, etc. such as credit cards, phone cards, bankbooks, and transit passes, the information stored on them may become damaged due to the magnetism of the product.

- The status of the product can be checked based on the status light.
- Check the charging status of the mobile device to see whether it is being properly charged.

Wireless charging status	LED lamp
Power connection	Red → Green → Orange → Blinks before turning off
Standby	Off
Charging	Red
Charging complete	Green
Protective function in operation	Blinks in red

#### 4. How to Connect with Mobile Device App

- Visit <http://www.1thefull.com> to check the product information and the information on how to connect it to the app.



#### BLE-related Precautions

- When using this product with a Bluetooth device, keep them as close as possible.
- When turning the device off and then back on, the Bluetooth device must be connected again.
- Multi pairing is not supported, and only one Bluetooth device may be connected.
- If the device is turned off or the device and the connected Bluetooth device are placed far apart, they will become automatically disconnected.

## 04. Product Specification

Item	Specification
Model	AVAdin-1
Input power	5V/2A or 9V/1.67A or 9V/2.0A
Bluetooth version	BLE 5.0
Operating temperature	0°C~35°C
Dimensions (mm)	120x120x165
Weight (g)	470±10%

※ LG mobile devices can be wirelessly charged only at normal speeds.

#### 1. FCC Part 15.19

This device complies with part 15 of the FCC Rules. Operation is subject to the following two conditions: (1) This device may not cause harmful interference, and (2) this device must accept any interference received, including interference that may cause undesired operation.

#### 2. FCC Part 15.21

Any changes or modifications (including the antennas) to this device that are not expressly approved by the manufacturer may void the user's authority to operate the equipment.

3. FCC RF Radiation Exposure Statement: This equipment complies with FCC RF Radiation exposure limits set forth for an uncontrolled environment. This device and its antenna must not be co-located or operating in conjunction with any other antenna or transmitter.

This equipment should be installed and operated with a minimum distance of 20 cm between the radiator and your body.

- The warranty period is one year from the date of purchase.
- After purchasing the product, please fill out the following warranty certificate and keep the purchase receipt to confirm the date of purchase.
- If it is difficult to confirm the date of purchase, the warranty period will be calculated from 3 months after the date of manufacture.

## Warranty Certificate

**Product:**

---

**Model:**

---

**Date of purchase :**

---

**Vendor:**

---

**Serial No. :**

---

## Customer Support

In case of product failure, malfunction, etc., please contact the vendor or call 1644-5622. After the repair, any defective parts, etc. will be recovered by our company to prevent reuse and ensure safety.

### Eligible for Free Warranty Services

- Malfunctions, failures, etc. occurring during normal use within the warranty period (1 year from the date of purchase)
- Normal use can only occur after disassembling the product to replace certain parts.

### Not Eligible for Free Warranty Services

- Requesting services, etc. for reasons other than product malfunction or failure, charges may be imposed, irrespective of whether the warranty is still valid, so make sure to check the user manual before requesting services.
- Failure caused by unauthorized disassembly, modification, repair, etc.
- Failure caused by an accident or natural disaster (fire, flood, lightning strike, etc.)
- Failure caused by non-compliance with the precautions or user negligence (inundation, damage, etc.)

AVAadin

wonderful  
(주)원더풀플랫폼 platform