

5. PHOTOGRAPHS

5.1. Photos of Powerline Conducted Measurement

Test Mode: Data Read [w/AK II or KENTEX Adapter, Cable #1 (no core) or #2 (with core)]



FRONT VIEW OF CONDUCTED TEST



BACK VIEW OF CONDUCTED TEST

Test Mode: Data Write [w/AK II or KENTEX Adapter, Cable #1 (no core) or #2 (with core)]



FRONT VIEW OF CONDUCTED TEST



BACK VIEW OF CONDUCTED TEST

Test Mode: CD Play [w/AK II or KENTEX Adapter, Cable #1 (no core) or #2 (with core)]



FRONT VIEW OF CONDUCTED TEST



BACK VIEW OF CONDUCTED TEST

5.2. Photos of Radiated Measurement at Open Field Test Site (30~1000MHz)
Test Mode: Data Write [w/AK II (2PIN) Adapter, Data Cable #1 (no core)]



FRONT VIEW OF RADIATED TEST



BACK VIEW OF RADIATED TEST

Test Mode: Data Write [w/AK II (2PIN) Adapter, Data Cable #1 (no core)]



SETUP WITH MAXIMUM DETECTED EMISSION AT HORIZONTAL POLARIZATION



SETUP WITH MAXIMUM DETECTED EMISSION AT VERTICAL POLARIZATION

5.3. Photos of Radiated Measurement at Semi-Anechoic Chamber (30~1000MHz)

Test Mode: [w/AK II or KENTEX Adapter, Data Cable #1 (no core)]



FRONT VIEW OF RADIATED TEST

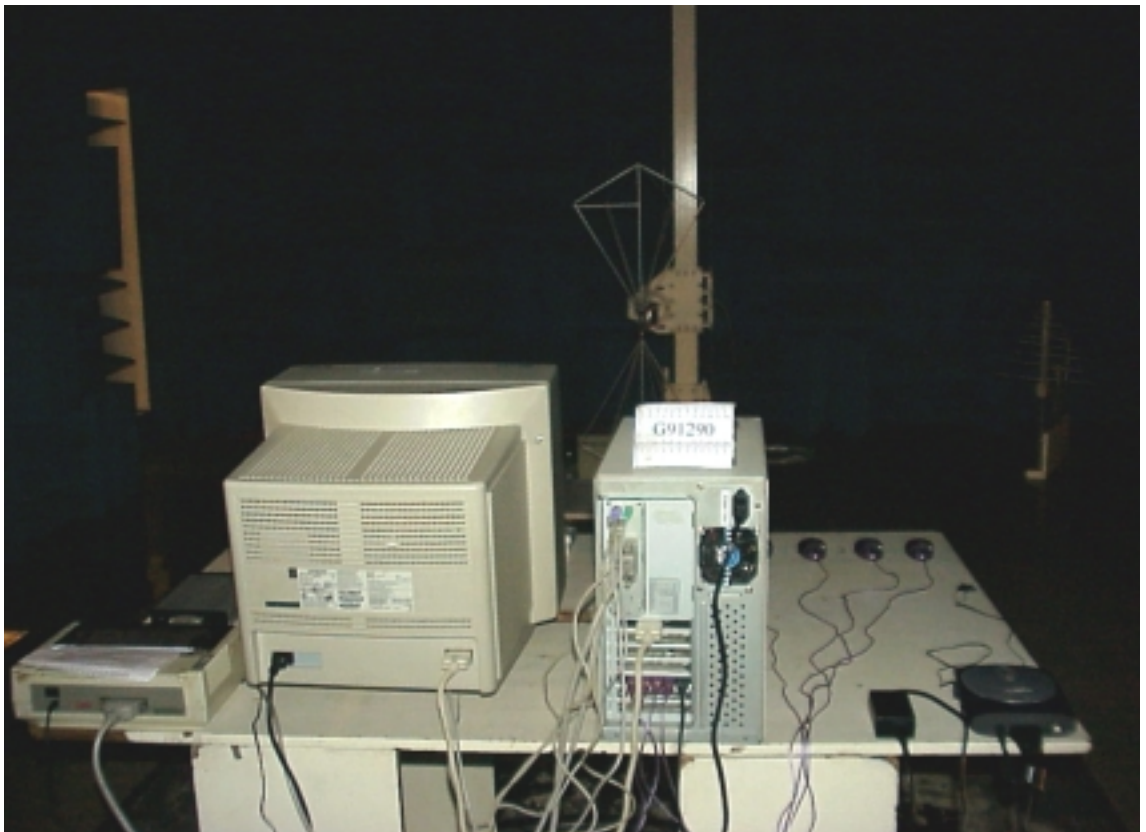


BACK VIEW OF RADIATED TEST

Test Mode: [w/AK II or KENTEX Adapter, Data Cable #2 (with core)]



FRONT VIEW OF RADIATED TEST

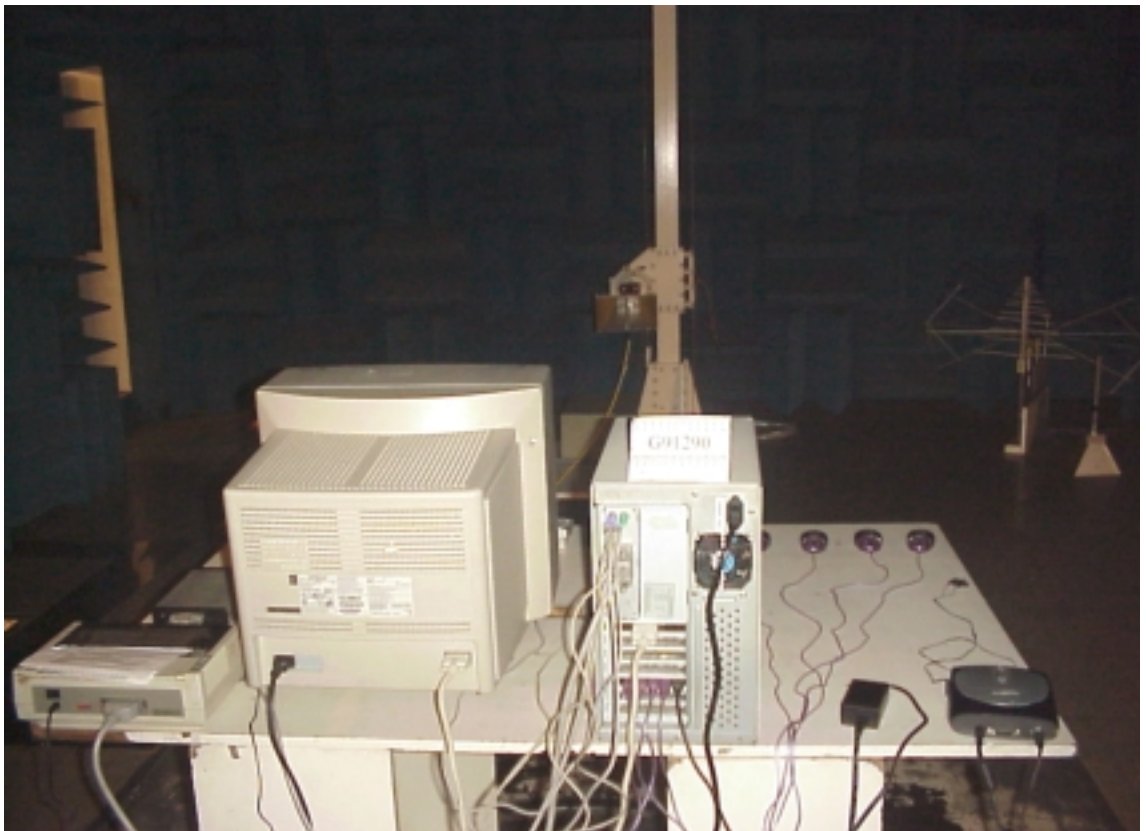


BACK VIEW OF RADIATED TEST

5.4. Photos of Radiated Measurement at Semi-Anechoic Chamber (1~7GHz)
Test Mode: CD Play [w/AK II or KENTEX Adapter, Data Cable #1 (no core)]



FRONT VIEW OF RADIATED TEST

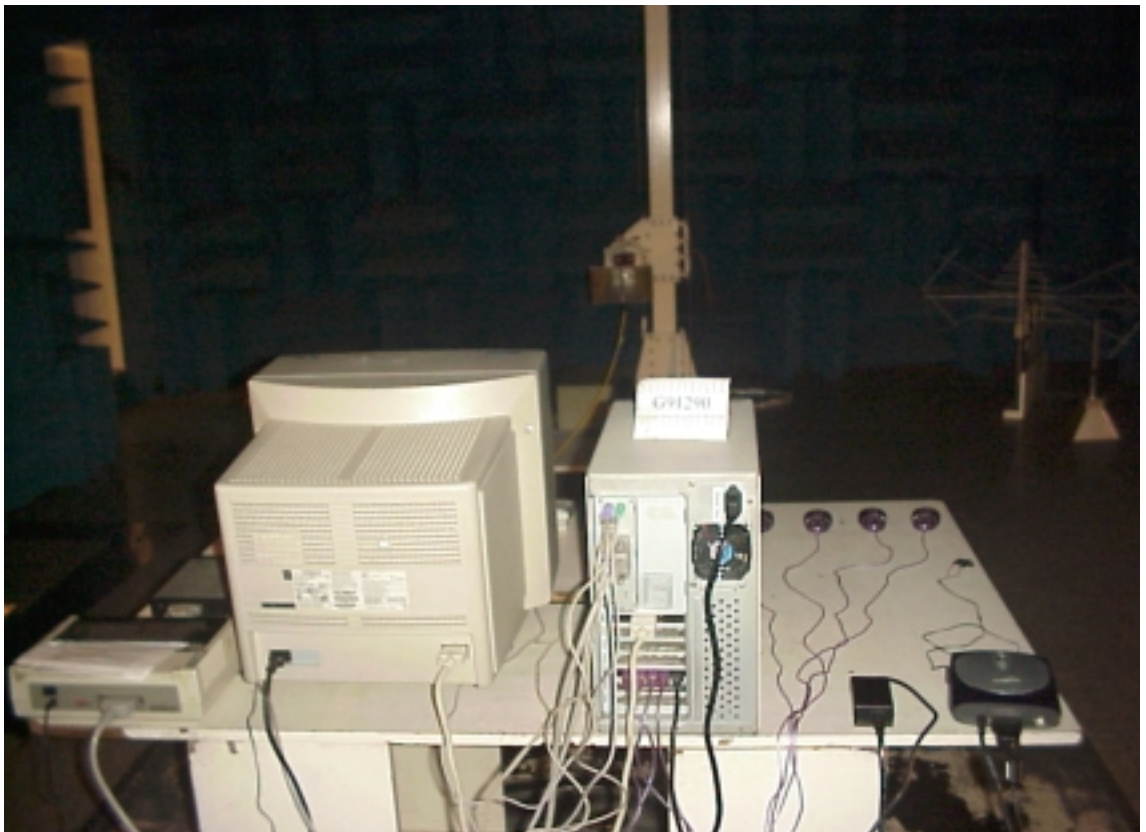


BACK VIEW OF RADIATED TEST

Test Mode: CD Play [w/AK II or KENTEX Adapter, Data Cable #2 (with core)]



FRONT VIEW OF RADIATED TEST



BACK VIEW OF RADIATED TEST