

Figure 23
CD-RW DRIVE, M/N: LXR-40122B
Frame of Internal (Removed CD-Tray Device)

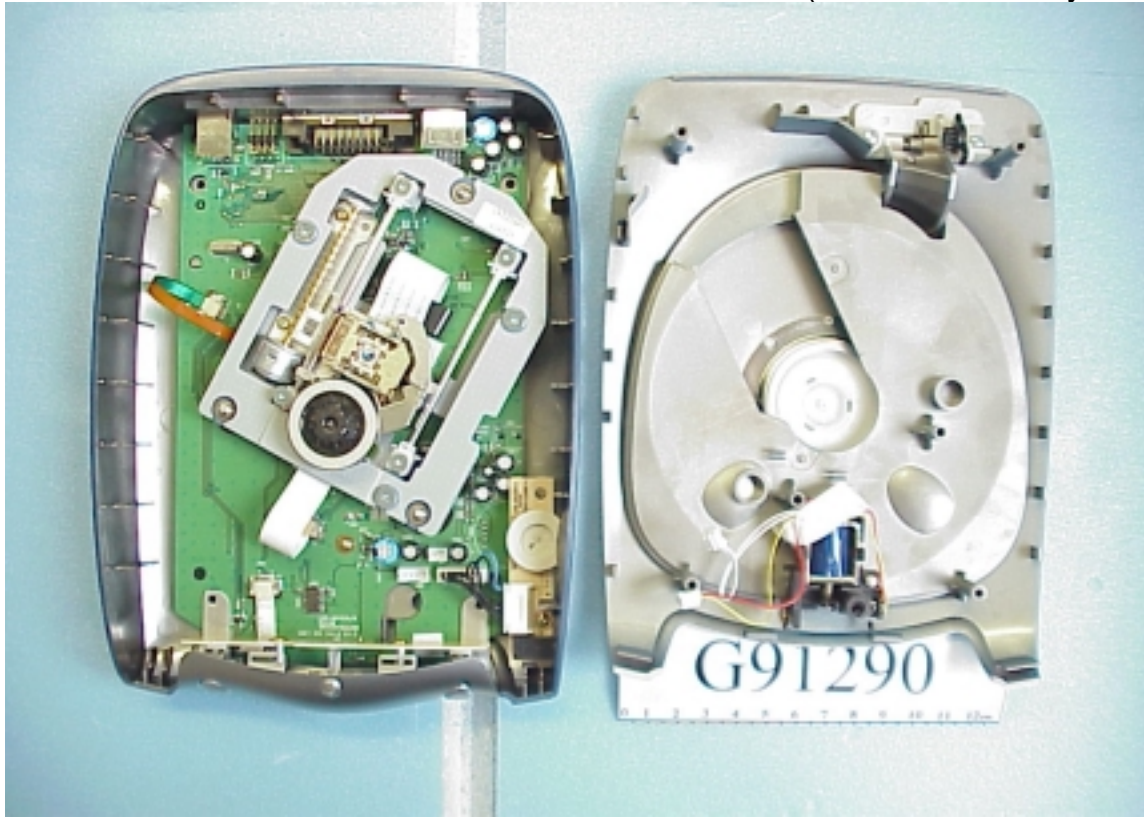


Figure 24
CD-RW DRIVE, M/N: LXR-40122B
Internal View (CD-Tray Device)



Figure 25
CD-RW DRIVE, M/N: LXR-40122B
Frame of Internal (Removed CD-Driver Device)

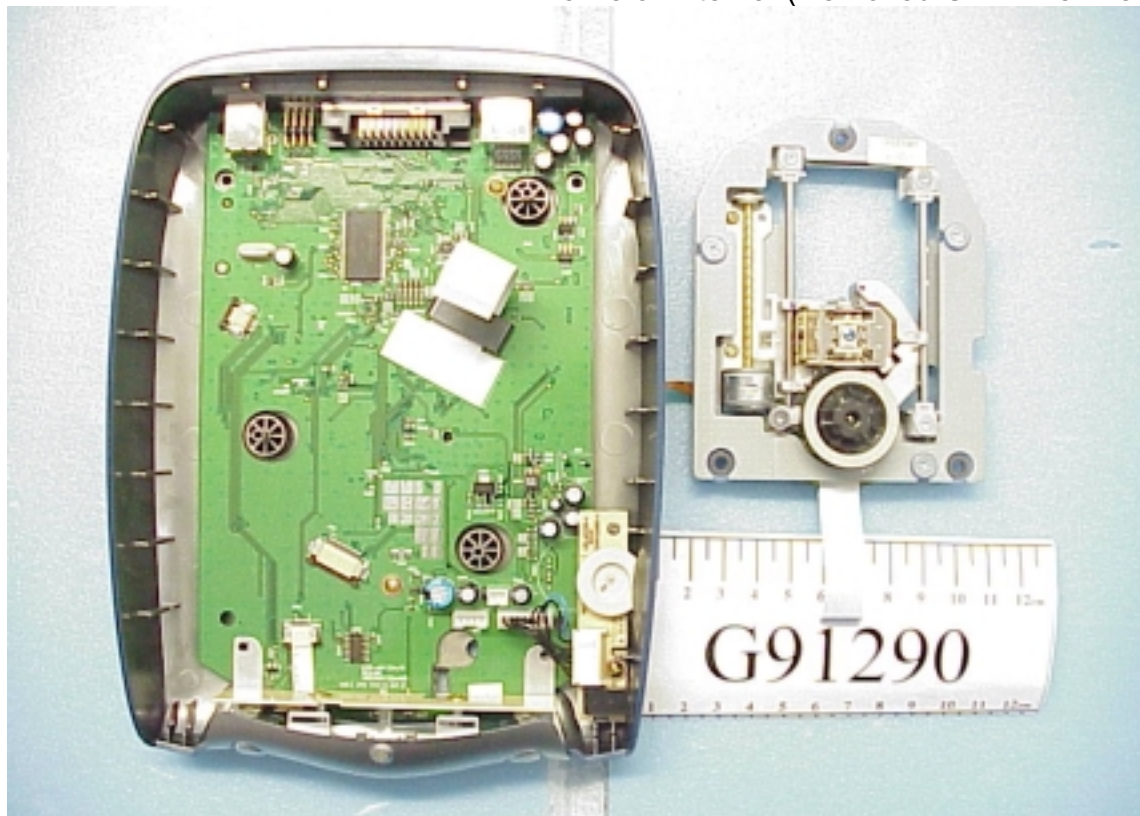


Figure 26
CD-RW DRIVE, M/N: LXR-40122B
Internal View (CD-Driver Device, Front Side)

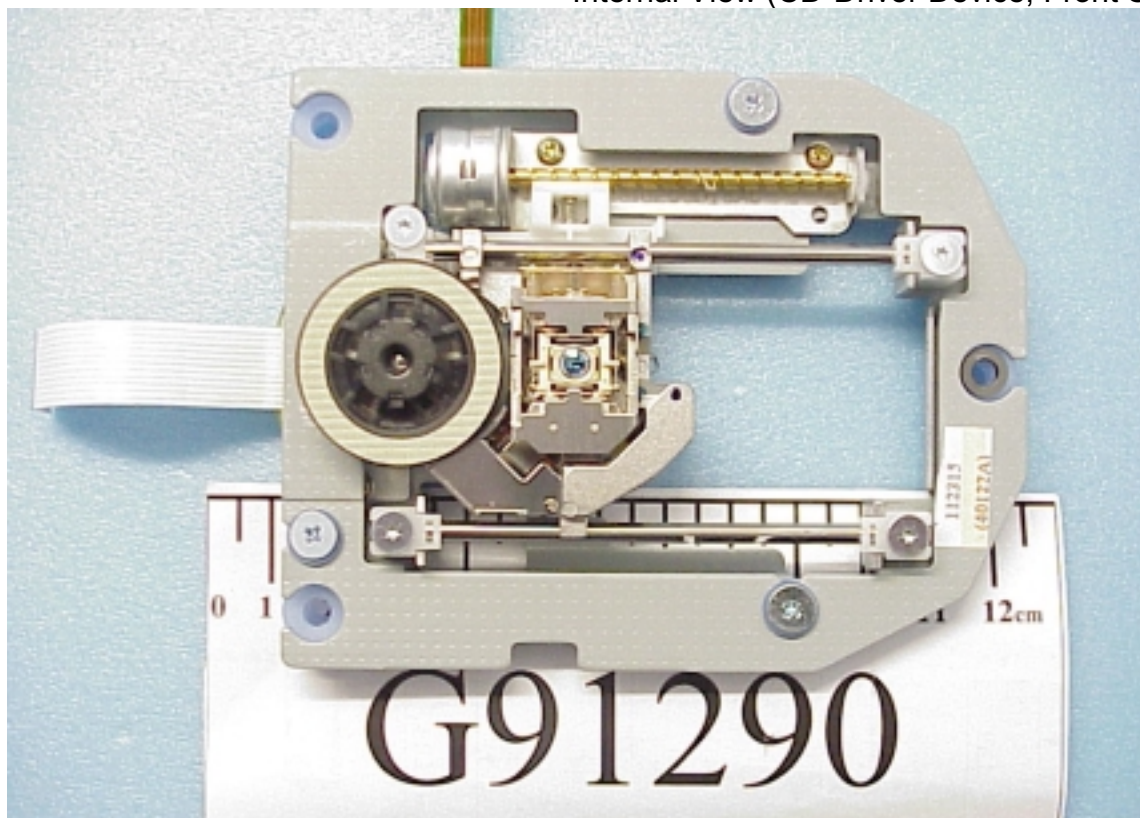


Figure 27
CD-RW DRIVE, M/N: LXR-40122B
Internal View (CD-Driver Device, Motor and Optic-Head)

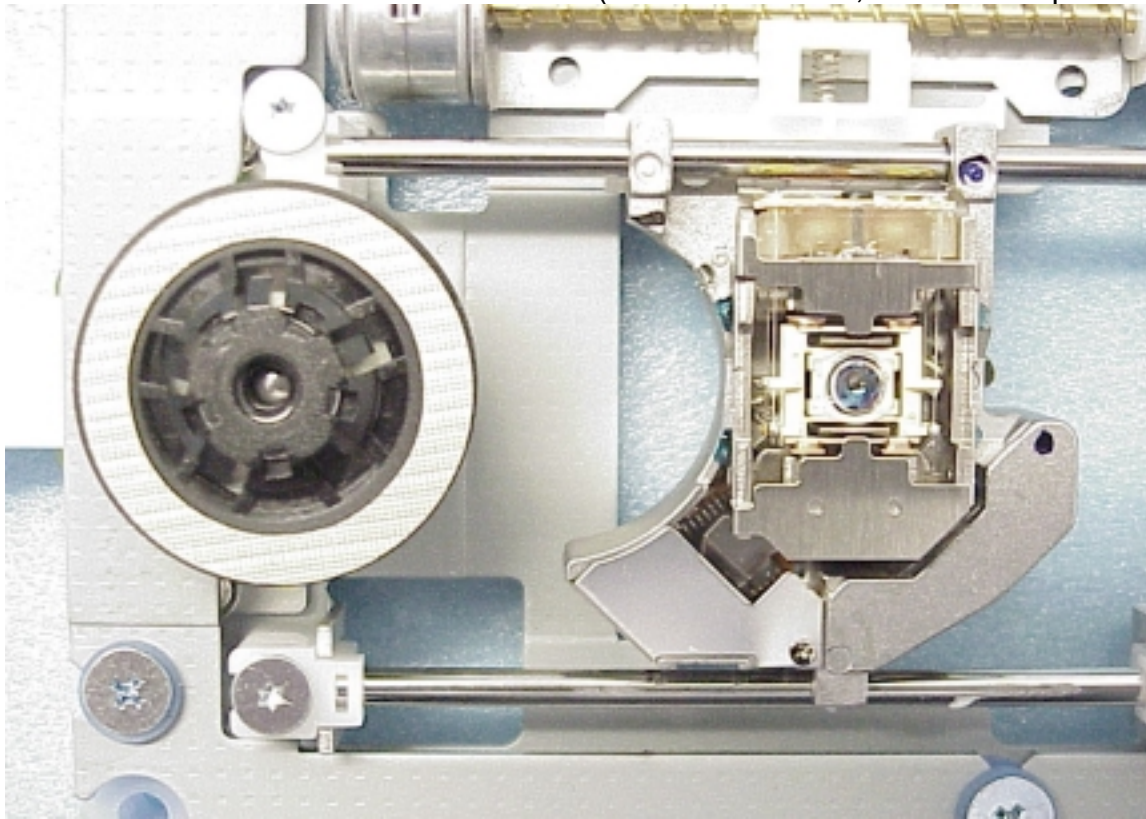


Figure 28
CD-RW DRIVE, M/N: LXR-40122B
Internal View (CD-Driver Device, Back Side)

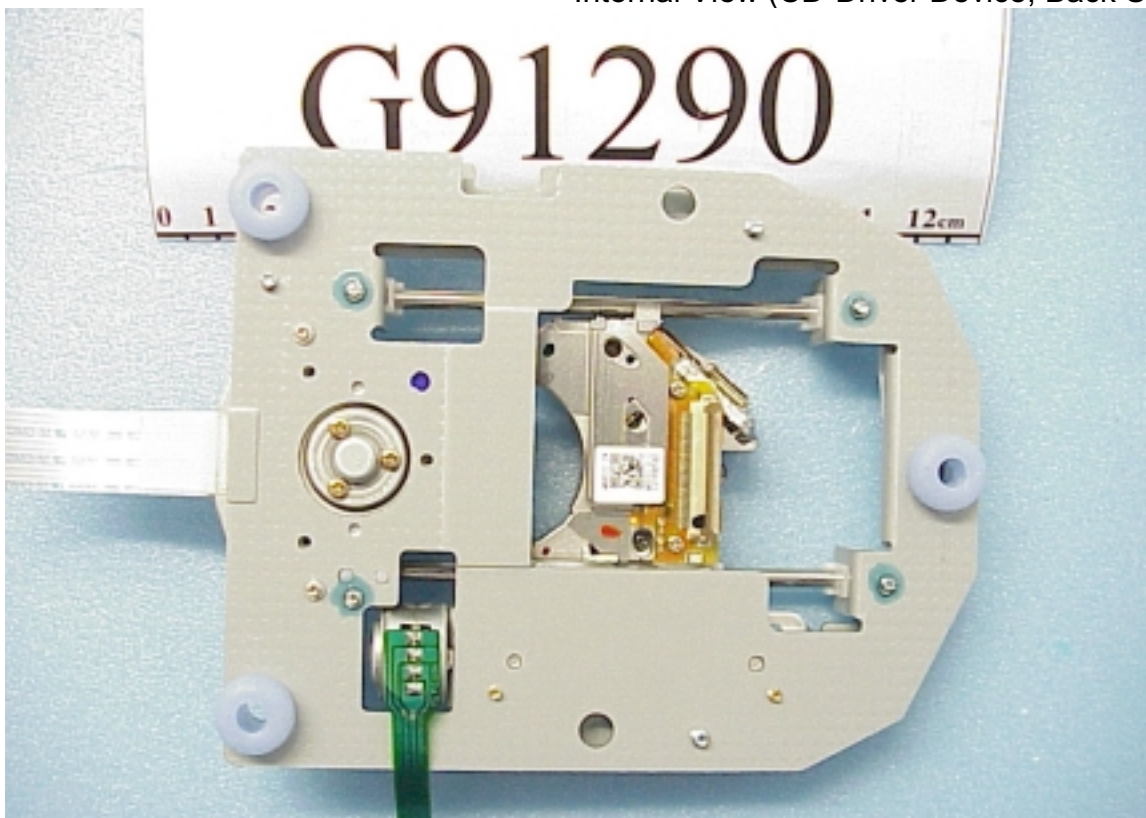


Figure 29
CD-RW DRIVE, M/N: LXR-40122B
Internal View (CD-Driver Device, Optic-Head/Back Side)

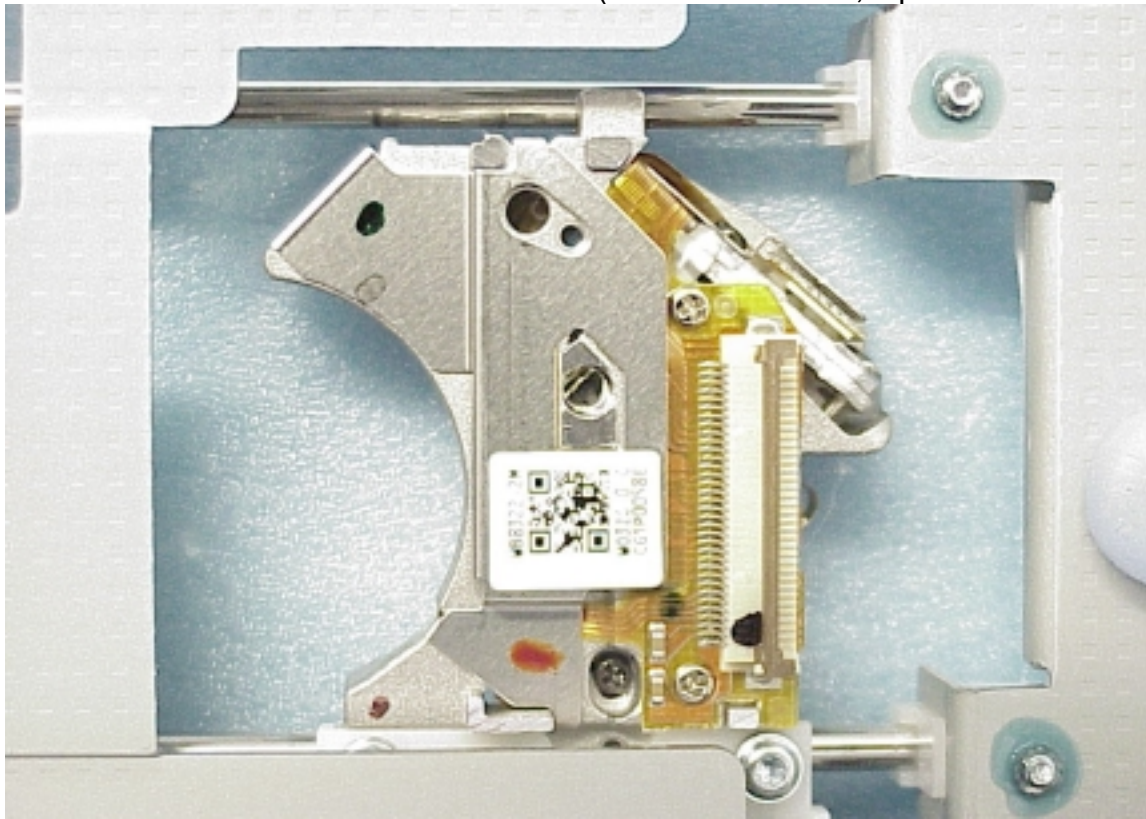


Figure 30
CD-RW DRIVE, M/N: LXR-40122B
Internal View (Removed Main Board)

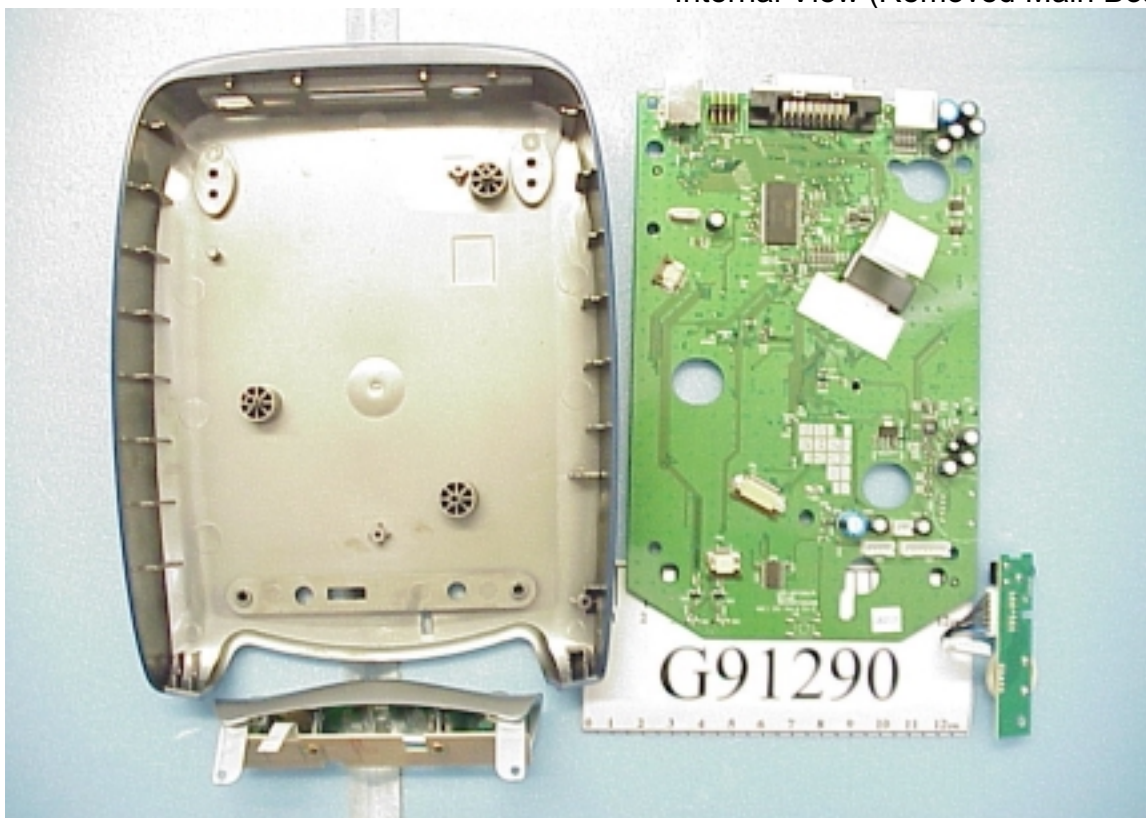


Figure 31
CD-RW DRIVE, M/N: LXR-40122B
Internal View (Main Board, Front Side)

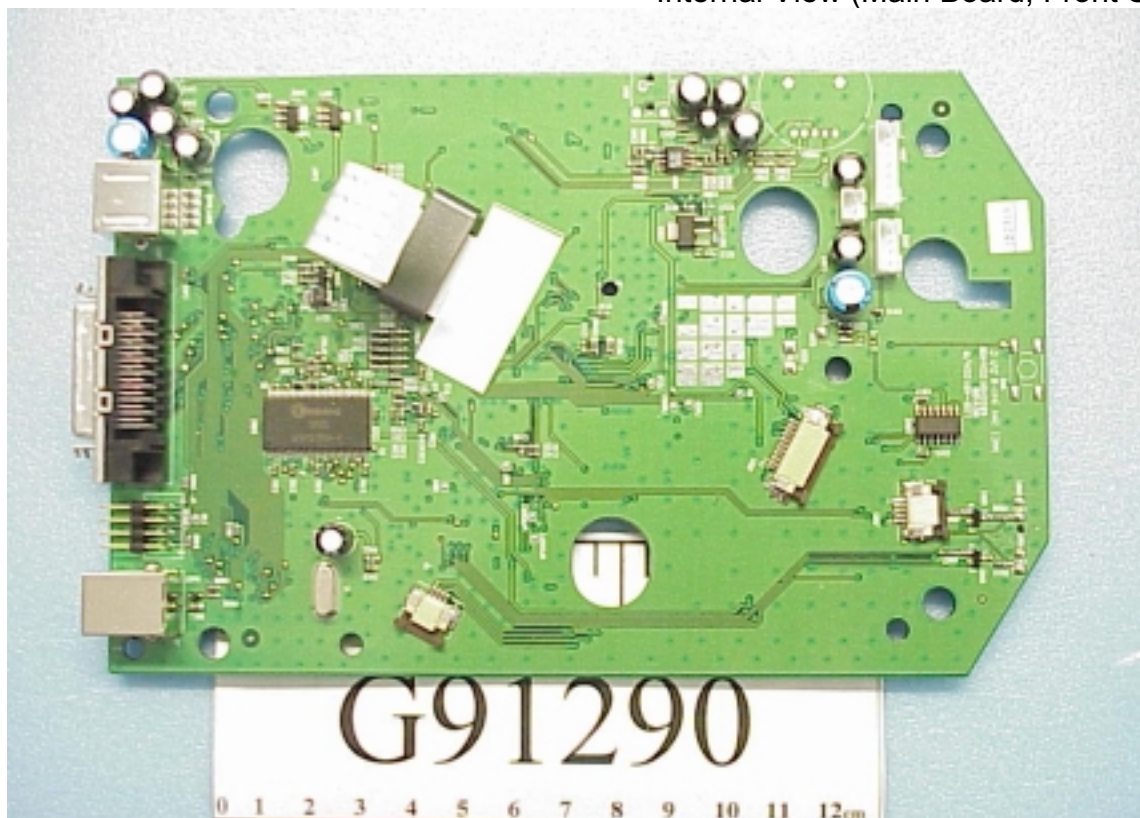


Figure 32
CD-RW DRIVE, M/N: LXR-40122B
Internal View (Main Board, Back Side)



Figure 33
CD-RW DRIVE, M/N: LXR-40122B
Internal View (Volume Control Board & Button Control Board)

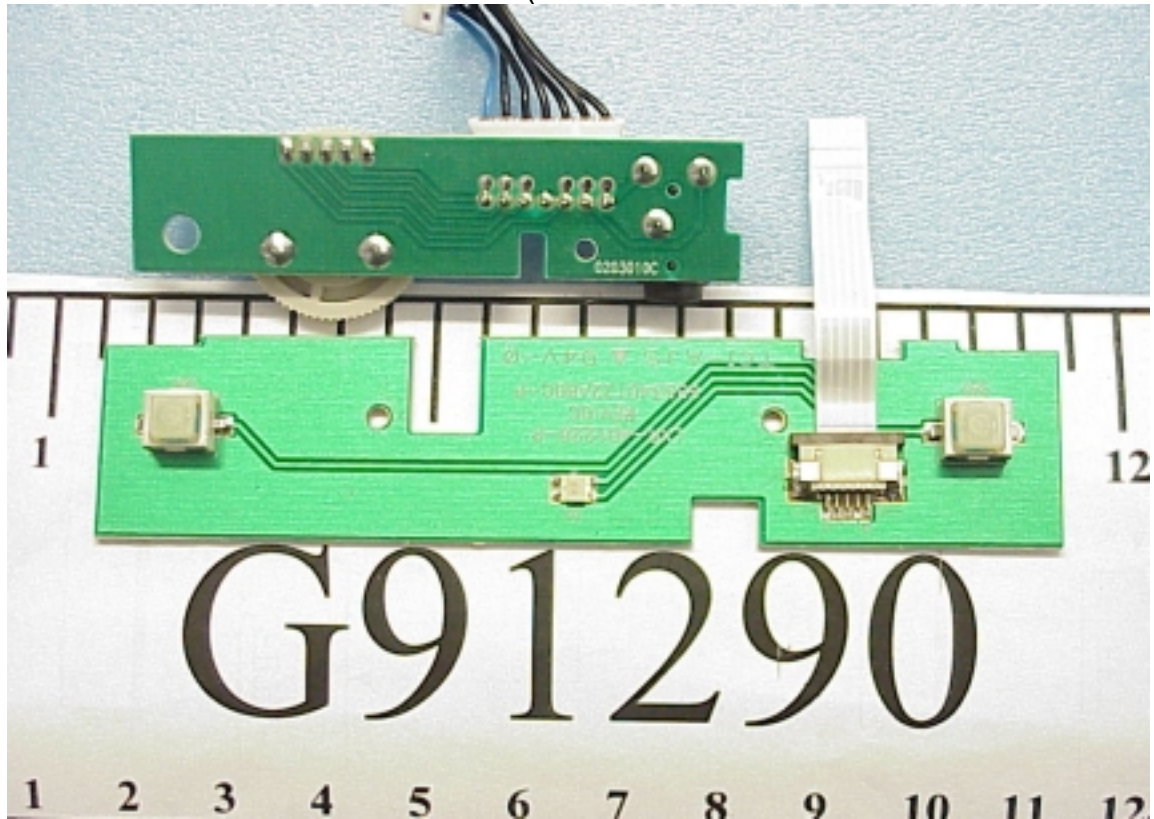


Figure 34
CD-RW DRIVE, M/N: LXR-40122B
Internal View (Volume Control Board & Button Control Board)

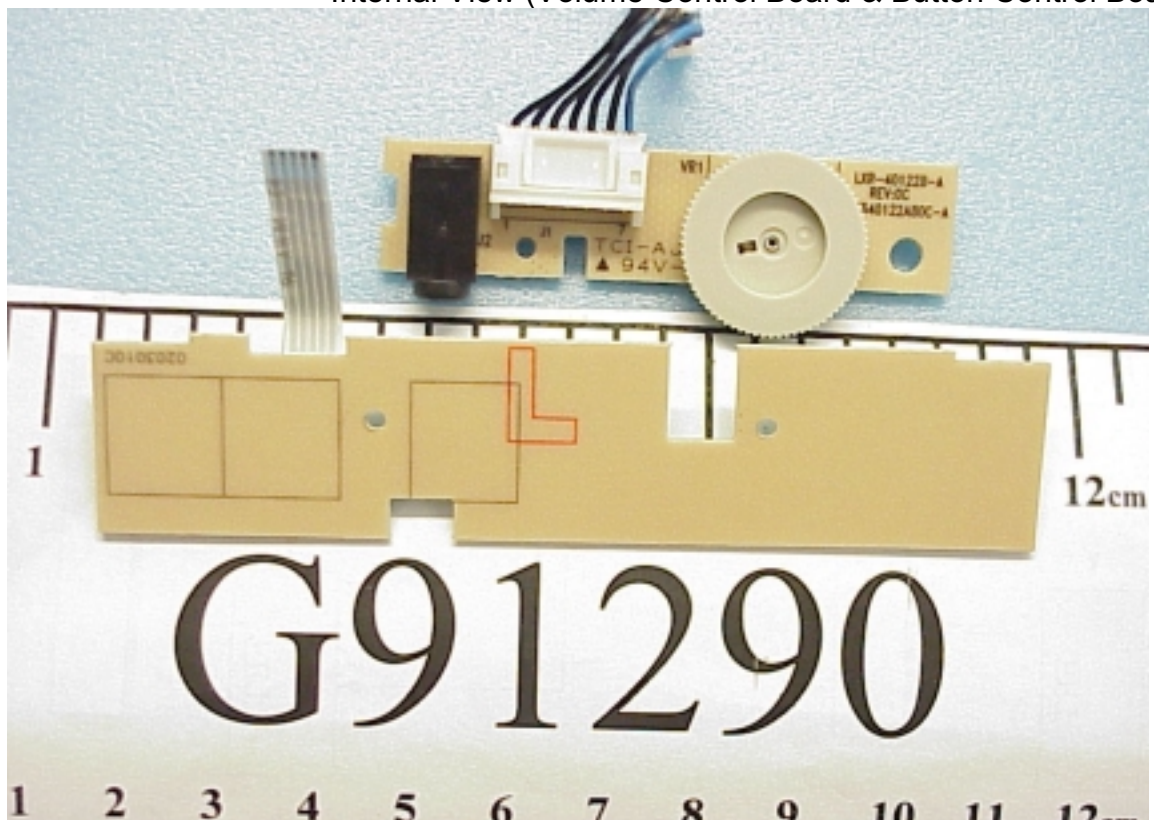


Figure 35
CD-RW DRIVE
USB Data Cable *2EA

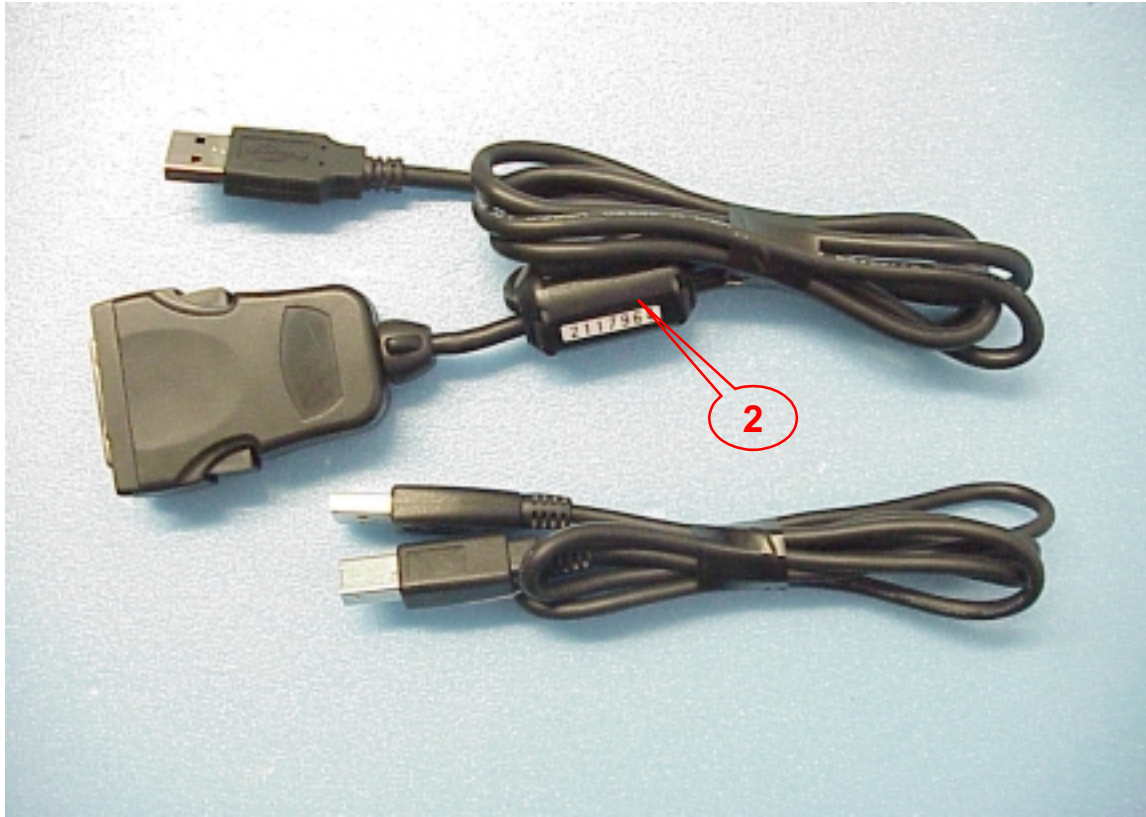


Figure 36
CD-RW DRIVE
Power Adapter/AK II-2PIN (General Appearance, Front & Side View)



Figure 37
CD-RW DRIVE
Power Adapter/AK II-2PIN (General Appearance, Bottom & Side View)



Figure 38
CD-RW DRIVE
Power Adapter/AK II-2PIN (Appearance, Product Label)



Figure 39
CD-RW DRIVE
Power Adapter/AK II-3PIN (General Appearance, Front & Side View)



Figure 40
CD-RW DRIVE
Power Adapter/AK II-3PIN (General Appearance, Bottom & Side View)



Figure 41
CD-RW DRIVE
Power Adapter/AK II-3PIN (Appearance, Product Label)



Figure 42
CD-RW DRIVE
Power Adapter/KENTEX-2PIN (General Appearance, Front & Side View)



Figure 43
CD-RW DRIVE
Power Adapter/KENTEX-2PIN (General Appearance, Bottom & Side View)



Figure 44
CD-RW DRIVE
Power Adapter/KENTEX-2PIN (Appearance, Product Label)

