

Figure 3  
Front View of Appearance (Operation Panel)



Figure 4  
Internal View (Removed Bottom Cover)

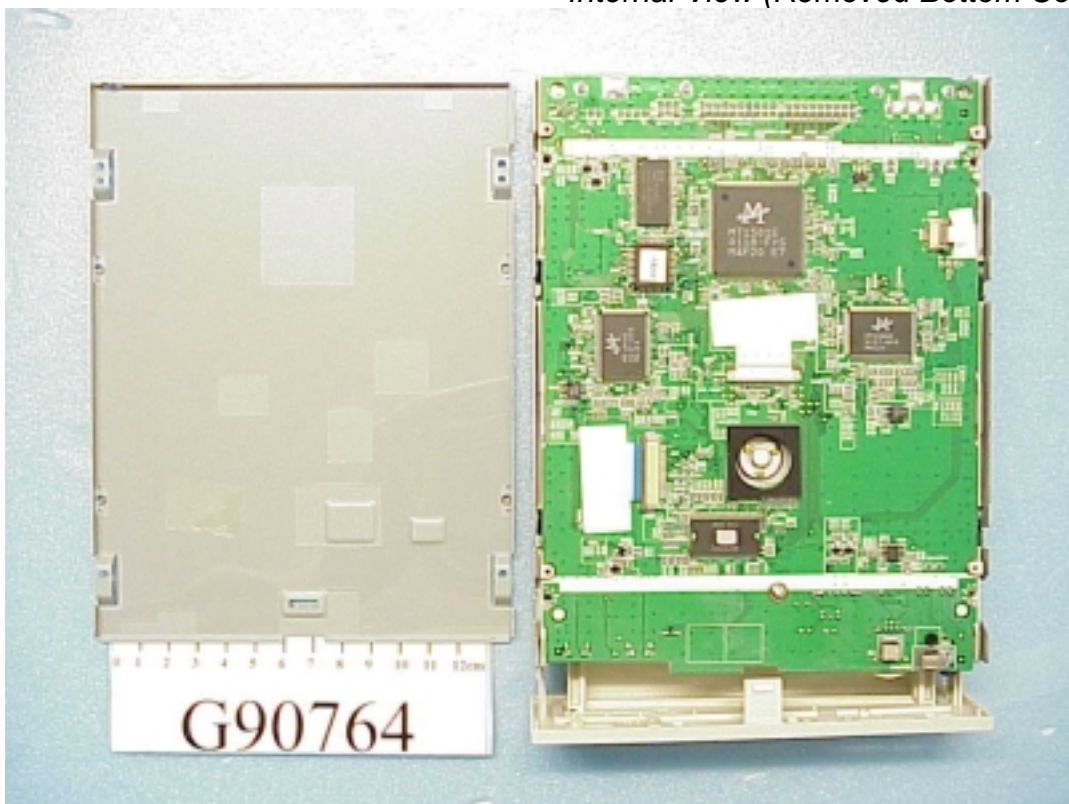


Figure 5  
Internal View (Removed Main Board)

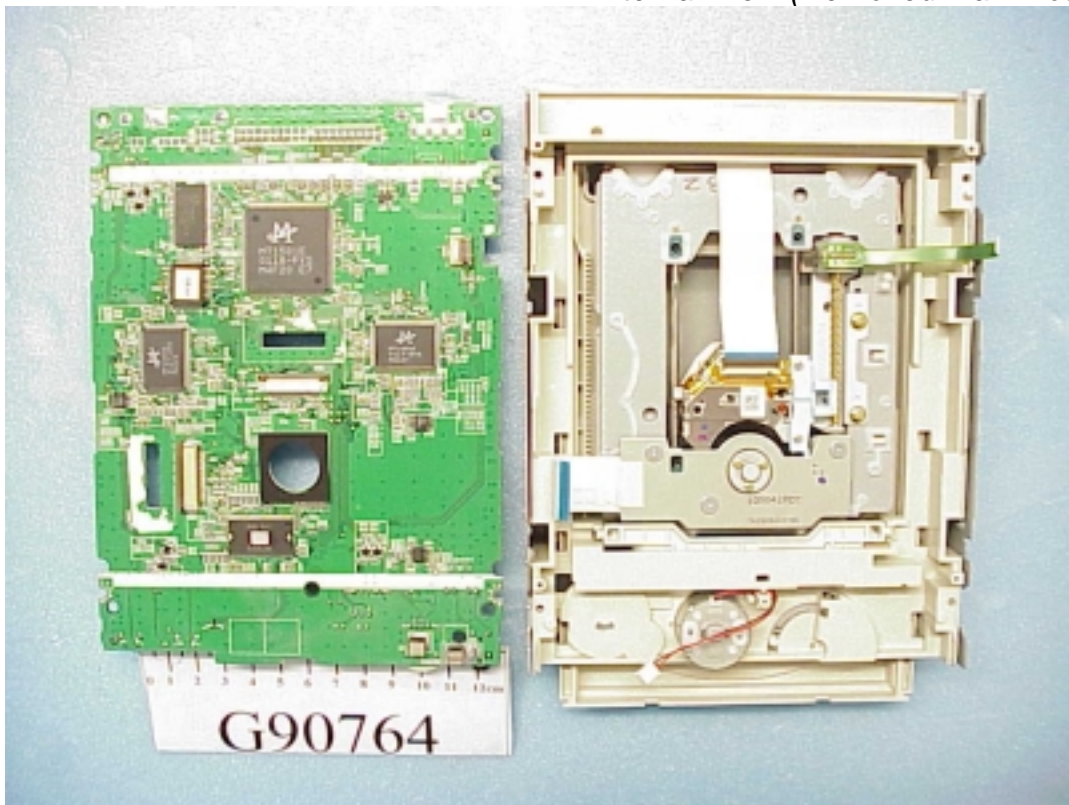


Figure 6  
Main Board (Component Side)





Figure 7  
Main Board (Solder Side)



Figure 8  
Internal View (Removed Top Cover)

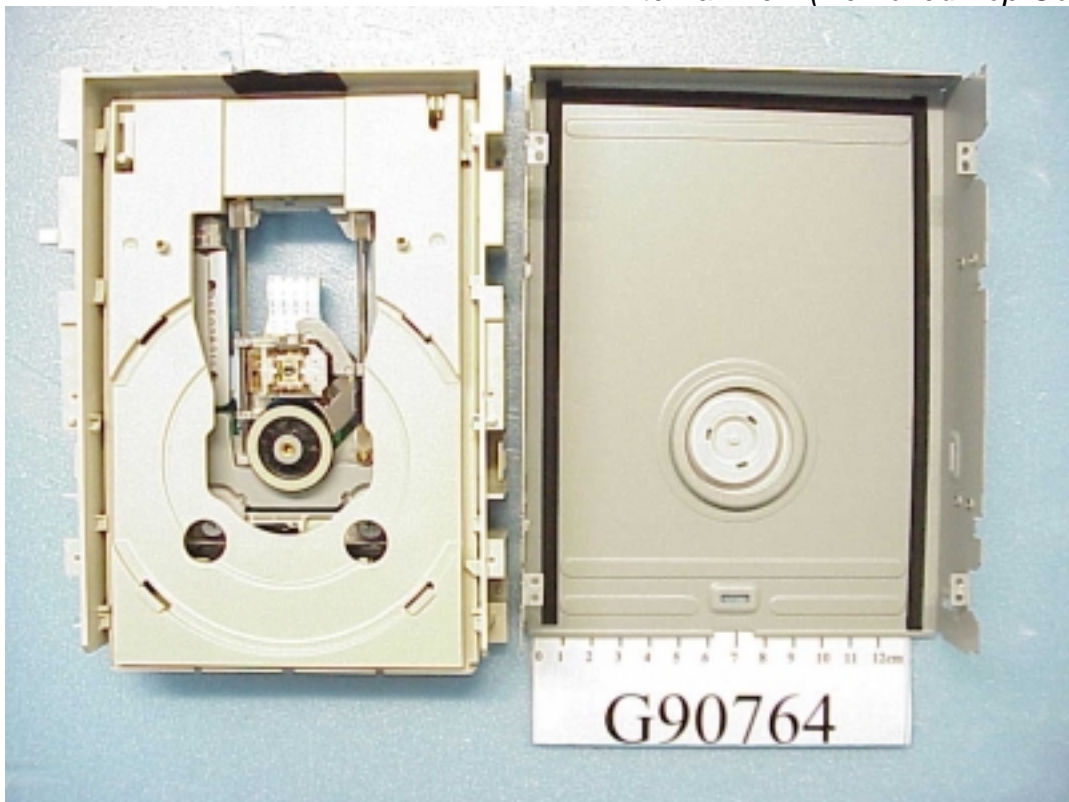


Figure 9  
Internal View (Optical-Head Driver/Back Side)

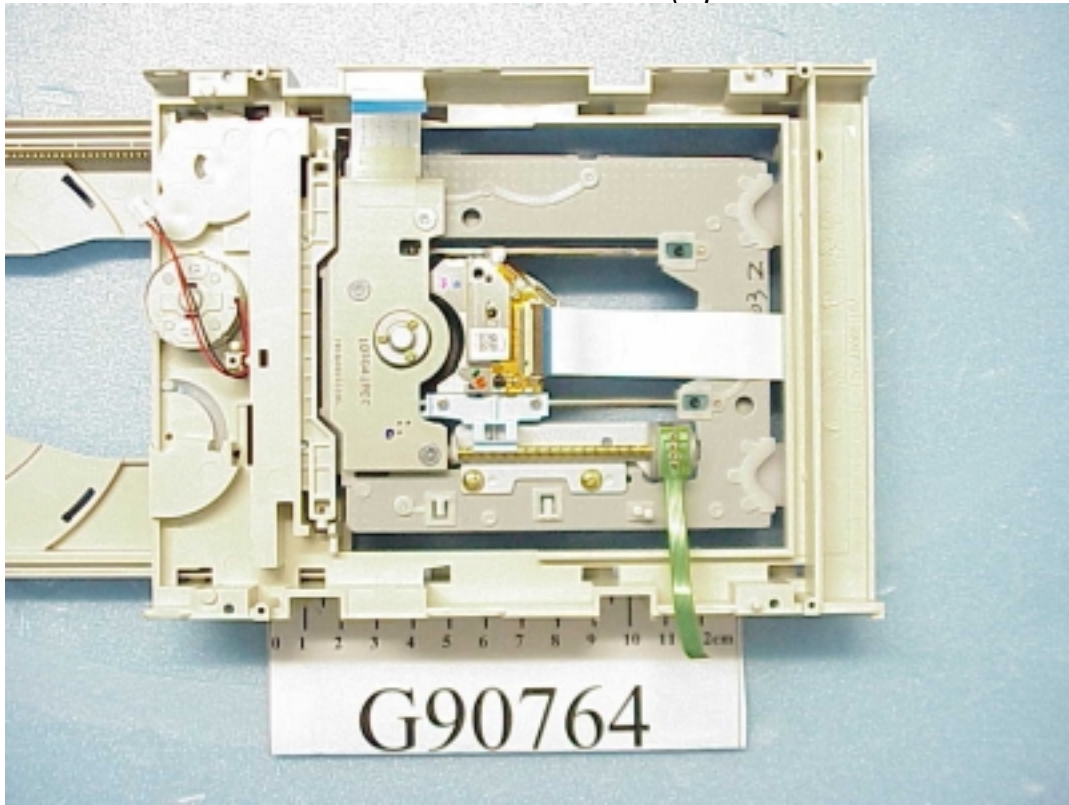


Figure 10  
Internal View (Optical-Head Driver/Front Side)

