

150mm

Troubleshooting

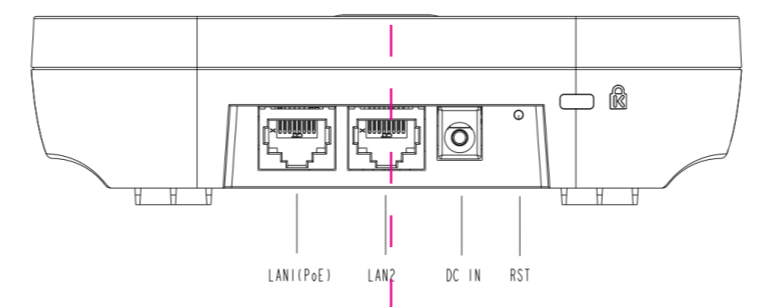
The following table shows the status of the AP's LED indicators.

WPX8324 LED Descriptions			
LED Indicative	Color	Status	Description
Power	Green	Solid Light	Power on
		Light off	Power off
2.4G	Green	Solid Light	Connect to WLAN port
		Blinking	WLAN activity present
		Light off	No activity or power off
5G	Green	Solid Light	Connect to WLAN port
		Blinking	WLAN activity present
		Light off	No activity or power off
LAN1 (PoE in)	Green	Solid Light	Device connected to LAN port at 10/100/1000Mbps
		Blinking	LAN Activity present
		Light off	Not Connected
LAN2	Green	Solid Light	Device connected to LAN port at 10/100/1000Mbps
		Blinking	LAN/WAN Activity present
		Light off	Not Connected

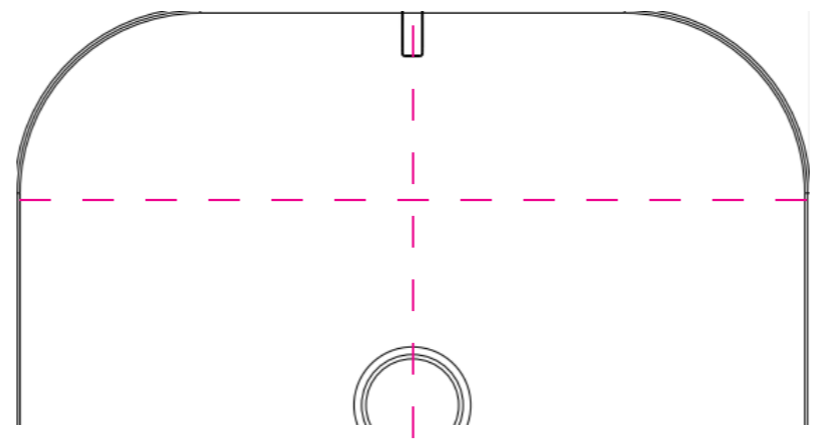
- If the AP fails to connect to the cloud server, please check the following:
1. Ensure that the Ethernet cable is plugged into the LAN 1(PoE) port, and LAN1 LED is NOT OFF.
 2. If the AP fails to get a valid IP address from the local DHCP server, ensure that the DHCP service is ENABLED on your router.
 3. Ensure there is Internet connectivity on the local LAN network to which the AP is connected

Getting AP online

- Step 1: Power up**
Using PoE, plug one end of the Ethernet cable into the PoE switch or injector and plug the other end into the LAN 1(PoE) port.
- Step 2: Connect to the network**
Make sure the PoE switch or injector is connected to your LAN network with Internet access.



Step 3: Check the LED status
Wait for a few minutes until the Power LED turns solid Green and LAN1 LED turns Blinking. The AP is then online for operation.



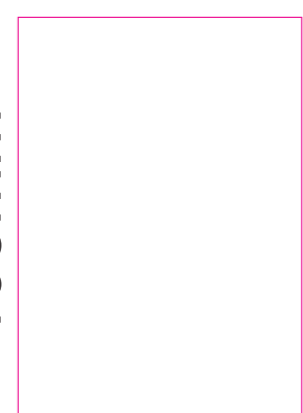
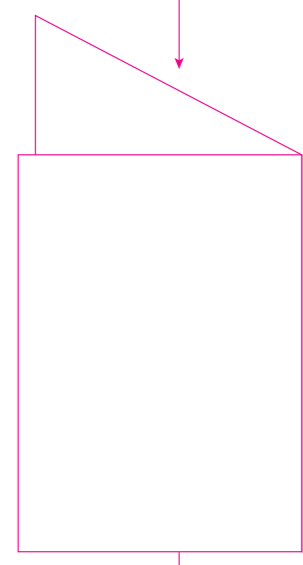
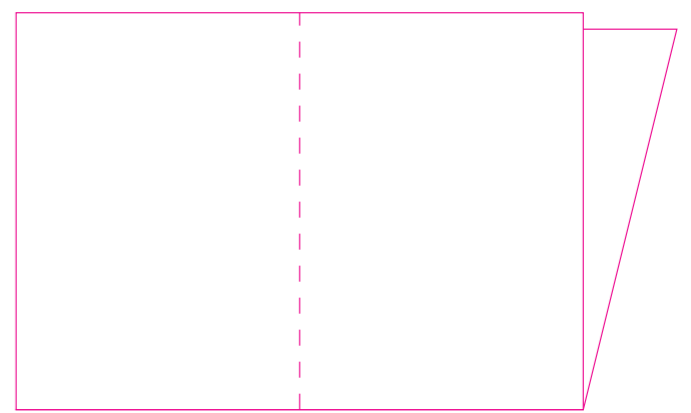
Federal Communication Commission Interference Statement

This product has been tested and found to comply with the limits for a Class A digital device pursuant to Part 15 of the FCC Rules. These limits are designed to provide reasonable protection against harmful interference when the equipment is operated in a commercial environment. This product generates, uses, and can radiate radio frequency energy and, if not installed and used in accordance with the manufacturer's instruction manual, may cause harmful interference with radio communications. Operation of this product in a residential area is likely to cause harmful interference, in which case you will be required to correct the interference at your own expense.

FCC Caution This device complies with Part 15 of the FCC Rules. Operation is subject to the following two conditions: (1) This device may not cause harmful interference, and (2) this device must accept any interference received, including interference that may cause undesired operation.

Non-modification Statement: Changes or modifications not expressly approved by the party responsible for compliance could void the user's authority to operate the equipment.

FCC Radiation Exposure Statement: This equipment complies with FCC radiation exposure limits set forth for an uncontrolled environment. This equipment should be installed and operated with minimum distance 20cm between the radiator & your body.



105mm

75mm

正面

反面

- (材質): 100g書紙
- (顏色):Black
- (表面處理): NO
- (尺寸):150*210mm
- (公差):+-1mm



LIMITS UNLESS OTHERWISE NOTED	
X. +- X.° +-	
.X +- .X° +-	
.XX +- .XX° +-	
.XXX +- .XXX° +-	

A4	UNIT	SCALE	SHEET	MODEL No.	for WPX8324		
	MM	NON	1(1)	PART NAME	QSG		
APPROVED	CHECKED	DESIGNED	PART No.	515000060147	REV	A0	
		Dereck 蔣飛龍 2022-05-10	LITEON		光寶科技股份有限公司 LITE-ON TECHNOLOGY CORP.		