

FCC Rule 15.21

The users manual or instruction manual for an international or unintentional radiator shall caution the user that changes or modifications not expressly approved by the party responsible for compliance could void the user's authority to operate the equipment.

FEDERAL COMMUNICATIONS COMMISSION

This device complies with Part 15 of the FCC Rules. Operation is subject to the following two conditions:(1) this device may not cause harmful interference, and (2) this device must accept any interference received, including interference that may cause undesired operation.

NOTE

This equipment has been tested and found to comply with the limits for a Class B digital device, pursuant to Part 15 of the FCC Rules. These limits are designed to provide reasonable protection against harmful interference in a residential installation. This equipment generates, uses and can radiated radio frequency energy and, if not installed and used in accordance with the instructions, may cause harmful interference to radio communications. However, there is no guarantee that interference will not occur in a particular installation. If this equipment does cause harmful interference to radio or television reception, which can be determined by turning the equipment off and on, the user is encouraged to try to correct the interference by one or more of the following measures:

- Reorient or relocate the receiving antenna.
- Increase the separation between the equipment and receiver.
- Connect the equipment into an outlet on a circuit different from that to which the receiver is connected.
- Consult the dealer or an experienced radio/TV technician for help.

Changes or modifications not expressly approved by the party responsible for compliance could void the user's authority to operate the equipment.

IMPORTANT NOTE:

FCC Radiation Exposure Statement:

This equipment complies with FCC radiation exposure limits set forth for an uncontrolled environment. End users must follow the specific operation instruction for satisfying RF exposure compliance.

This transmitter must not be co-located or operating in conjunction with any other antenna or transmitter.

Follow the quick steps to install your PC card.

⚠ Important: We strongly recommend install the software first before you plug the card into your computer.

1. Utility & Driver Installation

- a. Turn on your computer.
- b. Insert the CD into your CD-ROM drive.
- c. The Install shield wizard will appears.
- d. If the CD Autorun function does not appear, go to your Windows **Start** menu and choose "**Run**", type "**D:\Setup.exe**" ("D" represents your computer CD-ROM driver letter), and click "**OK**". (as **image 1.1**)

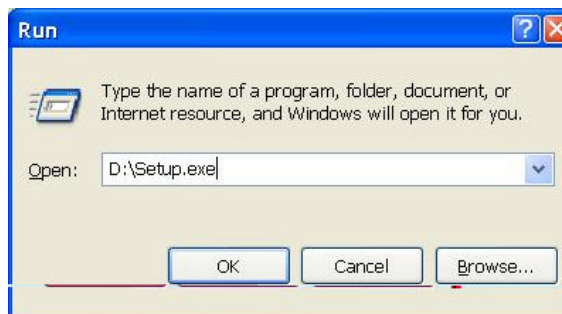



image 1.1

- 
- e. Click "**Install**" to begin the Installation.
 - f. Click "**Finish**" to finish the installing the Driver & Utility.

2. Hardware Installation

- a. Insert Wireless Notebook Adapter into available Cardbus slot on your computer. Your computer will appear **Found New Hardware Wizard** screen.
- b. Select "**Install the software automatically (Recommended)**", and then click "**Next**".
- c. Windows will remind you that the driver has not passed Windows Logo testing. This is normal, and it has been verified that this adapter does work with Windows. Click "**Continue Anyway**".
- d. Click "**Finish**" to finalize the installation.

3. Installation is complete!

After finished installation, configuration utility will start and the utility icon will appear in the bottom right hand corner of desktop screen.