



深圳市南斗星科技有限公司

SHENZHEN SOUTH STAR TECHNOLOGY CO., LTD.

样品封订

承认书

APPROVAL SHEET

客户名称 Customer Name EASTECH

产品型号 Product Model CE2 2.4GHz+5GHz

客户料号 Customer P/N _____

南斗星料号 Southstar P/N 3.N204.0266

制作日期 Date Prepared 2022-05-20

制作版本 Revision A

南斗星 (Southstar)		
制作 (Prepare)	品质 (DQE)	研发 (R&D)
客户 (Customer)		
采购 (PUR)	品质 (QC)	研发 (R&D)

生产厂商：深圳市南斗星科技有限公司

深圳地址：深圳市宝安区西乡鹤州恒丰工业城 C6 栋 10 楼

东莞地址：东莞市虎门镇赤岗南坊一路 3 号

电 话：0755-27474071 传真：0755-29976316

网 址：WWW.SZ-SOUTHSTAR.COM



目 录

Index

一、 封面 (Cover)	1
二、 目录 (Index)	2
三、 概述 (Overview)	3
四、 天线位置图片 (Antenna Picture)	3
五、 规格 (Product Specification)	4
六、 测试设备及条件 (Test Equipment &Conditions)	5
七、 性能报告 (Test Report)	6-
八、 天线图纸 (Antenna Drawing)	
九、 线损规格 (Linedamge specification)	2
十、 SGS	13 2
十一、 包装规范 (Product packaging instructions)	2

三. 概述 (Overview) :

此报告主要描述 SOUTHSTAR 给东威 CE2 项目的天线性能.

CE2 项目样机, WIFI 天线使用频段范围为 2400-2500MHz/5150-5850MHz;

四. 天线位置图片 (Antenna Picture) :

WF0



WF1



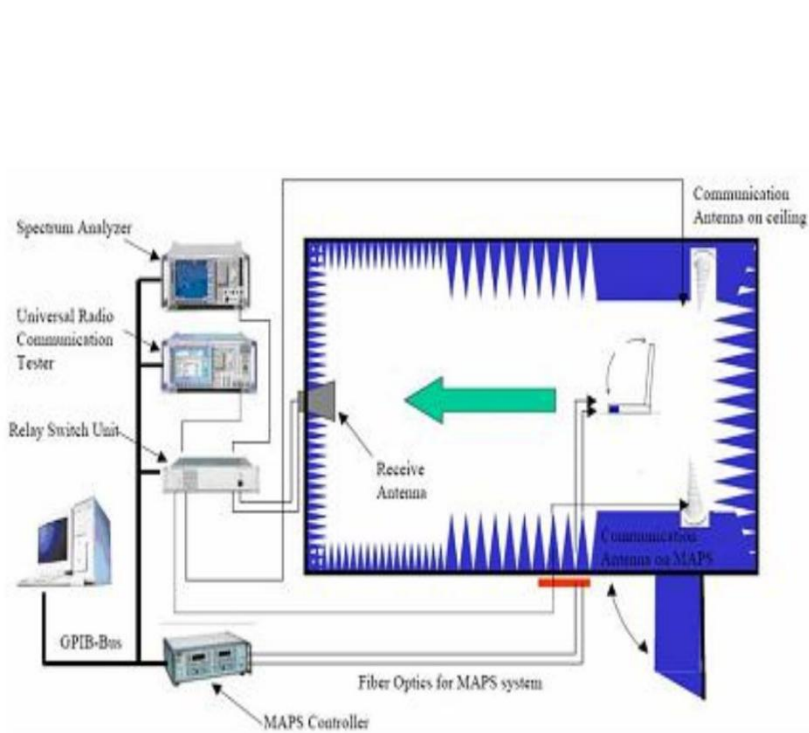


五、规格（Product Specification）：

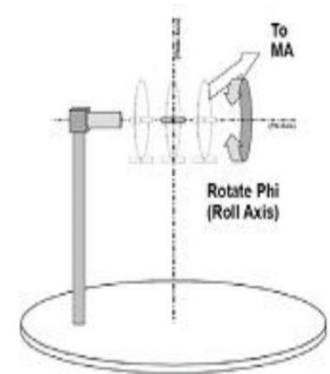
A. 电性能Electrical Characteristics	
Frequency 频率	2400 ~2500 MHz / 5150 ~5850 MHz
VSWR 电压驻波比	< 2
Efficiency 效率	>40%
Return loss 回波损耗	< -12
Impedance 阻抗	50 Ohm
Polarization 极化	线性 Linear
Peak Gain 增益	黑线：2400~2500 MHz:4.07 . dBi 5150~5850 MHz:4.56 . dBi ; 白线：2400~2500 MHz:3.42 . dBi 5150~5850 MHz:4.97 . dBi
Note 备注:	
B. 材料&物理性能Material & Mechanical Characteristics	
射频材料 Material of Radiator	PCB FR-4 black
射频线类型 Cable Type	Lows 银锡线 Φ1.13
接头类型 Connector Type	black&whitewhite一代端子
PCB 尺寸 PCB size	42.3*10*0.8±0.2mm
C. 环境 Environmental	
工作温度 Operation Temperature	- 30 °C ~ + 80 °C
存放温度 Storage Temperature	- 30 °C ~ + 85 °C

六、测试设备及条件（**Test Equipment & Conditions**）：

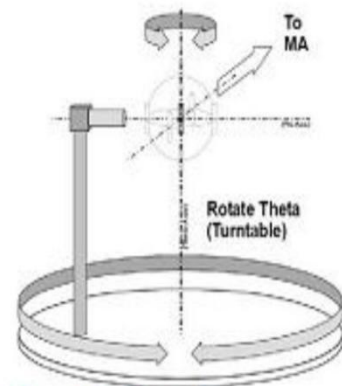
- 1.网络分析仪**Network Analyzers**： Agilent 5071C
- 2.综合测试仪**Communications Test Set**: Agilent E5515C CMW500
- 3.3D暗室测试系统 **3D Chamber Test System**



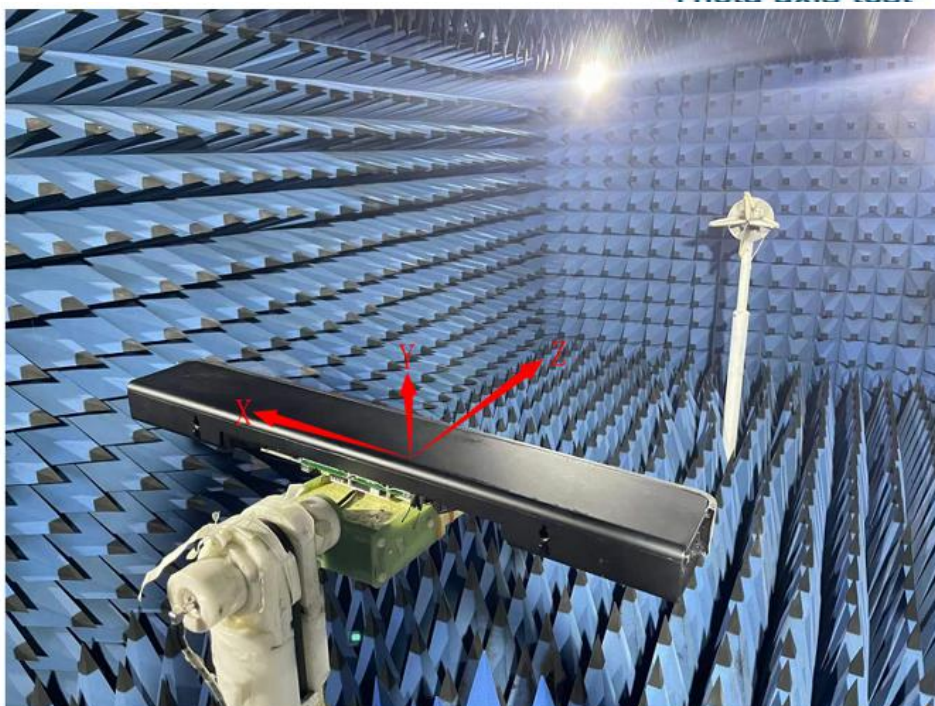
(Testing by 3D anechoic chamber)



Phi axis test

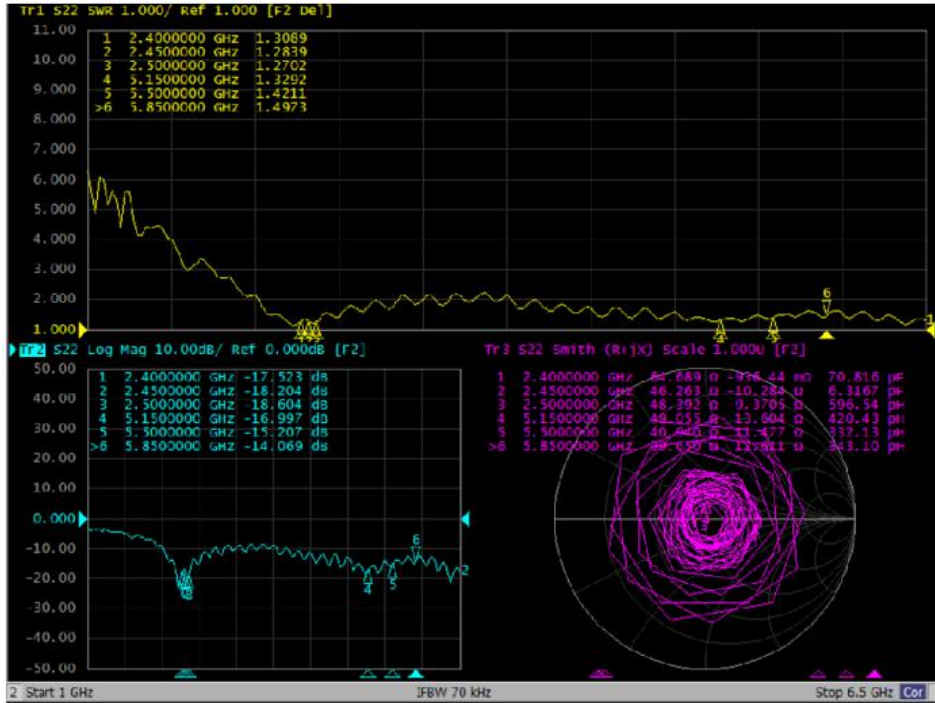


Theta axis test

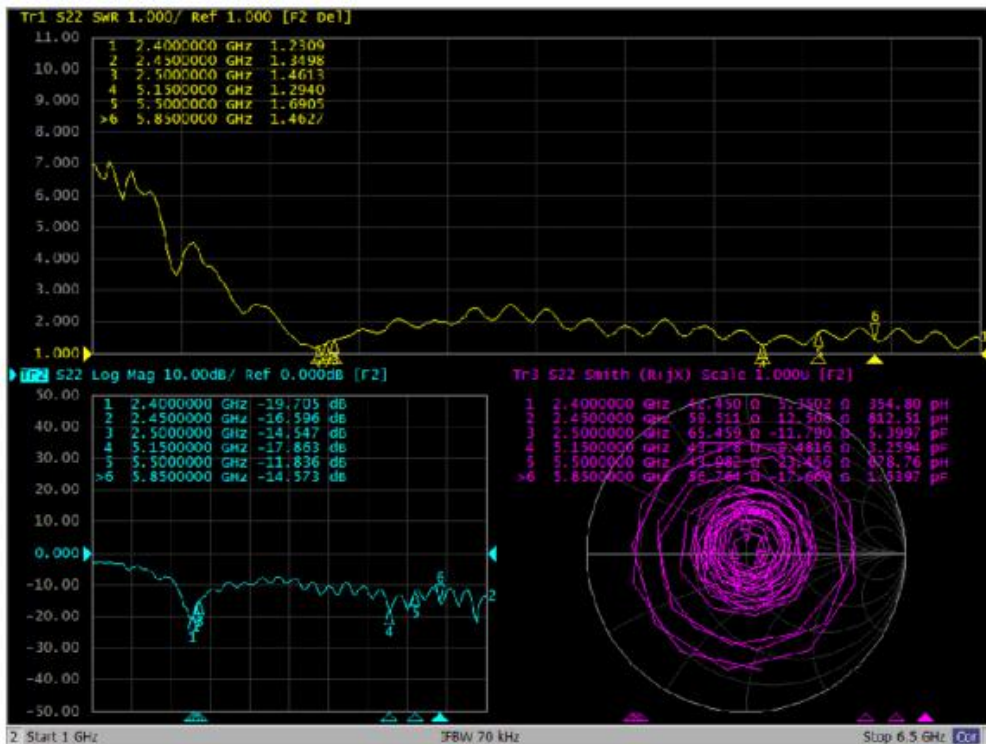


七、性能报告 (Test Report) :

1. 阻抗 Antenna Impedance: WF1 白线 MC/BT/WIFI S11 & Smith



WFO 黑线 WiFi S11 & Smith





深圳市南斗星科技有限公司

SHENZHEN SOUTH STAR TECHNOLOGY CO., LTD.

2.黑线 WIFI 效率&增益Total Efficiency& GAIN: WF0

Passive Test For 2.4			
Freq (MHz)	Effi (%)	Effi (dB)	Gain (dBi)
2400	45.85	-3.39	3.79
2410	44.51	-3.52	3.66
2420	46.74	-3.30	3.64
2430	45.38	-3.43	3.87
2440	44.97	-3.47	3.93
2450	44.18	-3.55	4.01
2460	45.59	-3.41	3.93
2470	45.71	-3.40	3.96
2480	43.58	-3.61	4.07
2490	44.95	-3.47	3.69
2500	44.19	-3.55	3.58

Passive Test For 5.8			
Freq (MHz)	Effi (%)	Effi (dB)	Gain (dBi)
5150	43.51	-3.62	1.69
5200	43.41	-3.63	1.76
5250	42.77	-3.69	2.84
5300	44.92	-3.48	2.22
5350	46.42	-3.33	2.33
5400	42.35	-3.73	2.69
5450	42.76	-3.69	2.82
5500	43.47	-3.62	1.61
5550	47.93	-3.19	2.89
5600	46.43	-3.33	2.42
5650	45.25	-3.44	1.83
5700	41.55	-3.81	2.31
5750	43.83	-3.58	3.09
5800	47.09	-3.27	4.37
5850	45.48	-3.42	4.56

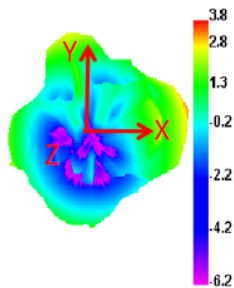
白线 MC/BT/WIFI 效率&增益Total Efficiency& GAIN: WF1

Passive Test For 2.4			
Freq (MHz)	Effi (%)	Effi (dB)	Gain (dBi)
2400	45.36	-3.43	3.42
2410	44.09	-3.56	3.17
2420	43.75	-3.59	2.85
2430	42.75	-3.69	2.3
2440	43.31	-3.64	2.52
2450	45.21	-3.45	2.81
2460	44.95	-3.47	2.59
2470	44.57	-3.51	2.59
2480	45.81	-3.39	2.75
2490	44.81	-3.49	2.78
2500	46.48	-3.33	2.92

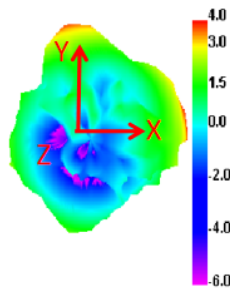
Passive Test For 5.8			
Freq (MHz)	Effi (%)	Effi (dB)	Gain (dBi)
5150	45.11	-3.46	4.14
5200	43.54	-3.61	2.96
5250	46.98	-3.28	3.37
5300	42.22	-3.74	2.2
5350	41.72	-3.80	2.18
5400	46.51	-3.32	3.5
5450	45.59	-3.41	3.06
5500	47.21	-3.26	3.32
5550	47.57	-3.23	3.48
5600	44.66	-3.50	3.27
5650	45.62	-3.41	3.44
5700	48.29	-3.16	3.77
5750	47.6	-3.22	4.12
5800	43.2	-3.65	4.95
5850	44.64	-3.50	4.97

3. 黑线 WIFI 3D&2D场形图 WF0

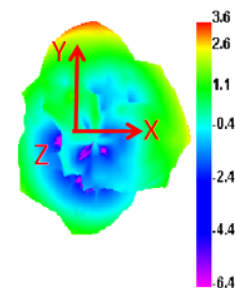
2400.000MHz



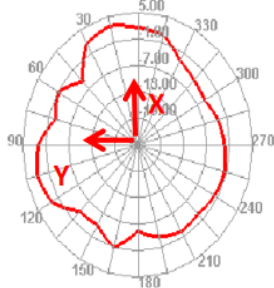
2450.000MHz



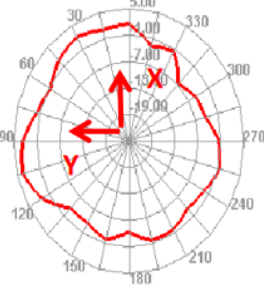
2500.000MHz



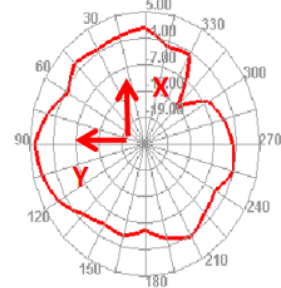
2400.000MHz H



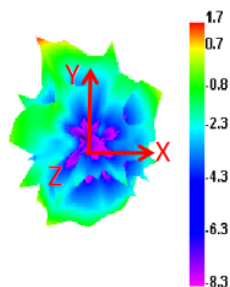
2450.000MHz H



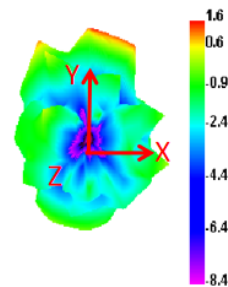
2500.000MHz H



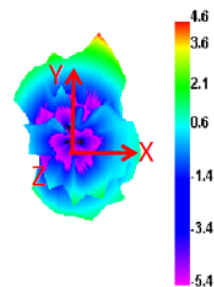
5150.000MHz



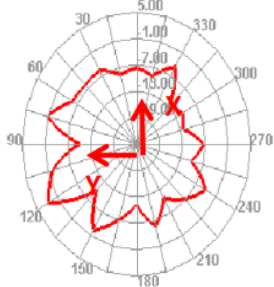
5500.000MHz



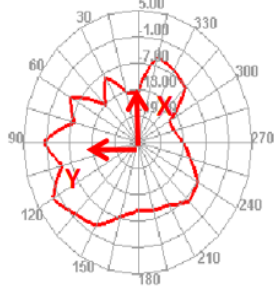
5850.000MHz



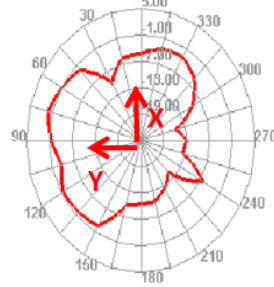
5150.000MHz H



5500.000MHz H

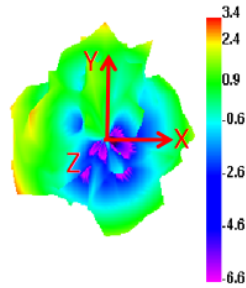


5850.000MHz H

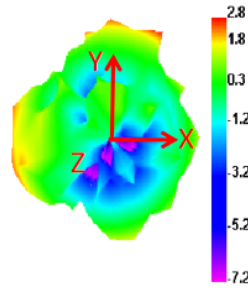


白线 MC/BT/WIFI 3D&2D场形图 WF1

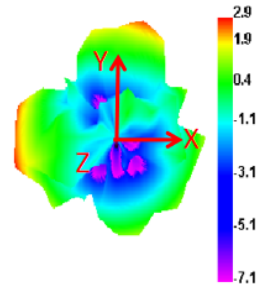
2400.000MHz



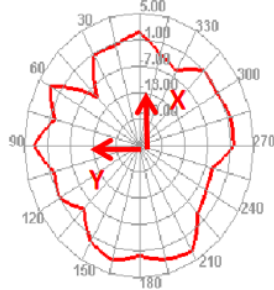
2450.000MHz



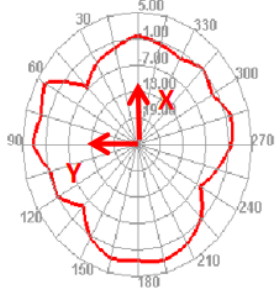
2500.000MHz



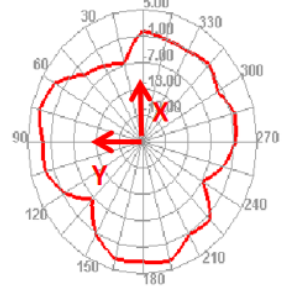
2400.000MHz H



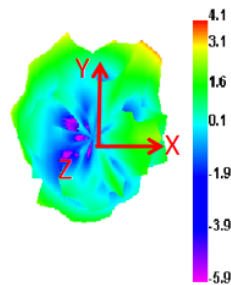
2450.000MHz H



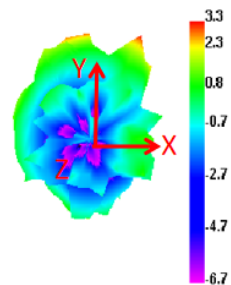
2500.000MHz H



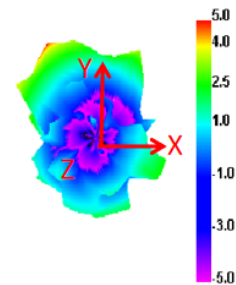
5150.000MHz



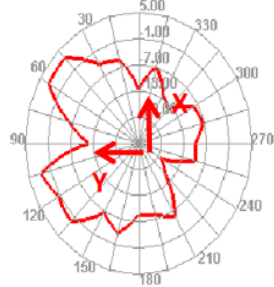
5500.000MHz



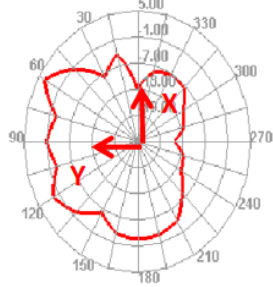
5850.000MHz



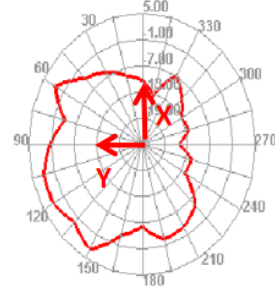
5150.000MHz H

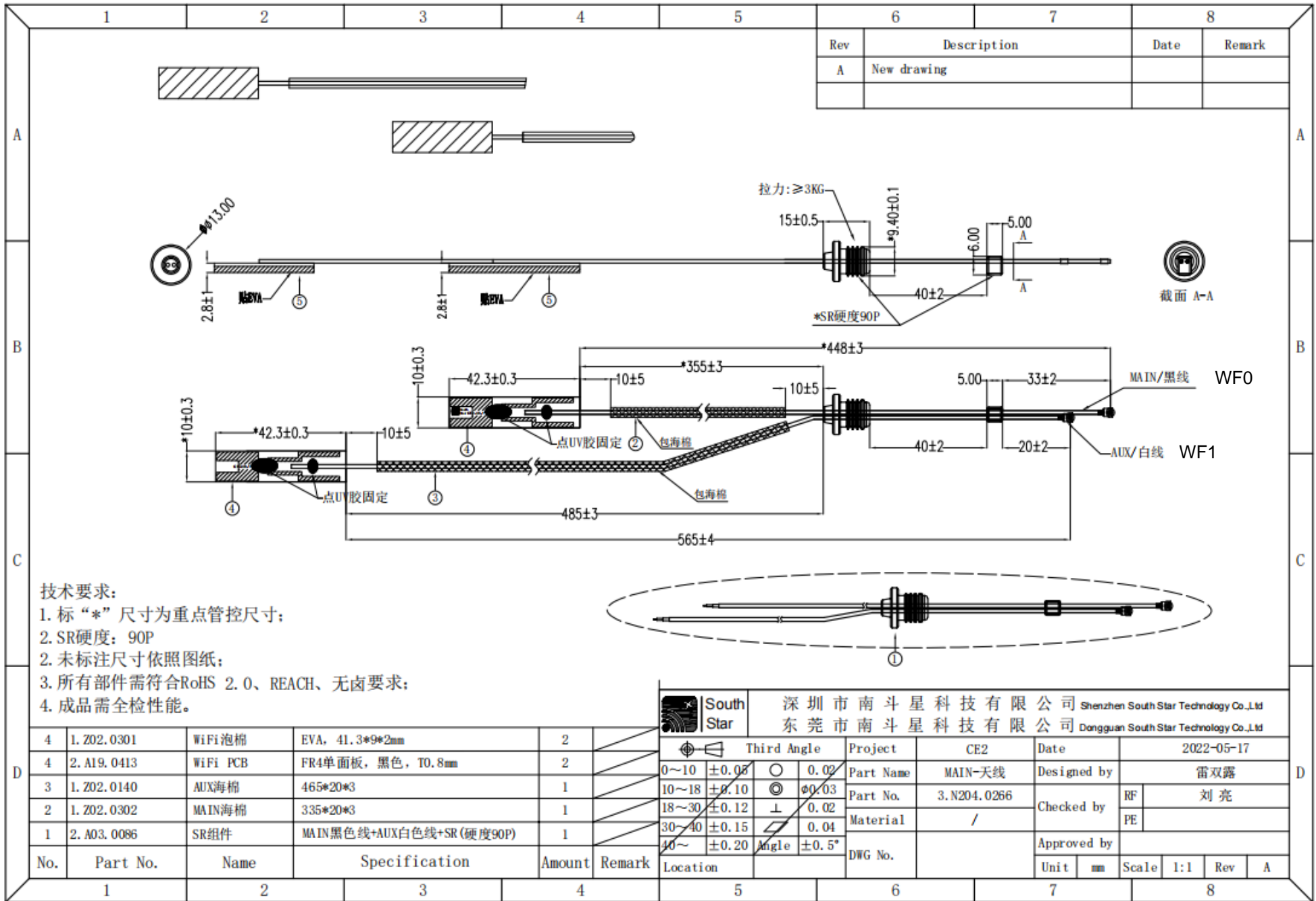


5500.000MHz H



5850.000MHz H





1	2	3	4	5	6	7	8	
					Rev	Description	Date	Remark
					A	New drawing		

技术要求:

1. 标“*”尺寸为重点管控尺寸;
2. SR硬度: 90P
3. 所有部件需符合RoHS 2.0、REACH、无卤要求;
4. 成品需全检性能。

4	1. Z02.0301	WiFi 泡棉	EVA, 41.3*9*2mm	2	
4	2. A19.0413	WiFi PCB	FR4单面板, 黑色, T0.8mm	2	
3	1. Z02.0140	AUX海棉	465*20*3	1	
2	1. Z02.0302	MAIN海棉	335*20*3	1	
1	2. A03.0086	SR组件	MAIN黑色线+AUX白色线+SR(硬度90P)	1	

No.	Part No.	Name	Specification	Amount	Remark
1					
2					
3					
4					

	深圳市南斗星科技有限公司 Shenzhen South Star Technology Co.,Ltd 东莞市南斗星科技有限公司 Dongguan South Star Technology Co.,Ltd		Project	CE2	Date	2022-05-17		
		Third Angle	Part Name	MAIN-天线	Designed by	雷双露		
	0~10 ±0.05 10~18 ±0.10 18~30 ±0.12 30~40 ±0.15 40~ ±0.20		Part No.	3.N204.0266	Checked by	RF	刘亮	
	Angle ±0.5°	Material	/	PE				
Location			DWG No.	Approved by				
	Unit	mm	Scale	1:1	Rev	A		

Customer			Sample No.
Description	RF CABLE 50Ω OD:1.13loss 30AWG		Rev.
			D
	Item (项目)	Unit	Specification(规格值)
	Awg(线规)	Awg	#32
	No.of conductor(芯线数)	p,c	1C
Conductor 导体	Material(材质)	---	Silver Plated Copper (镀银铜线)
	Filler (填充)	---	-----
	Construction(结构)	No./mm	7/0.08±0.008
Insulation 绝缘	Material(材质)	---	FEP
	Nom. Thickness(厚度)	mm	0.22
	Diameter(线径)	mm	0.72±0.03
	Color(颜色)	---	Nature(本色)
Braid Shield 编织	Material(材质)		Tinned Copper Wire(镀锡铜线) 16/4/0.05±0.008
		---	copper foil 铜箔
	Coverage(遮蔽率)	%	90 ↑
Jacket 外被	Material(材质)	---	FEP
	Min. Thickness(厚度)	mm	0.12
	O.D(外径)	mm	1.15±0.05
	Color(颜色)	---	黑
Marking	No Marking		

Customer			Sample No.
Description	RF CABLE 50Ω OD:1.13loss 30AWG		Rev.
Electric Characters:			
电容(pF/m) Capacitance(pF/m)		98	
速率(%) Velocity(%)		70	
阻抗(Ω) Impedance(Ω)		50±3	
驻波比 Standing wave ratio		≤1.3@0~6GHz	
最大工作电压(V) Max.operating voltage(V)		1000	
最大工作频率(GHz) Max.operating frequency(GHz)		6	
Attenuation(衰减)		频率 Frequency	标准值 Standard value 单位 Unit:dB/m
		1.0	≤1.88
		2.0	≤2.55
		3.0	≤3.05
		4.0	≤3.52
		5.0	≤4.05

	6.0	≤4.4
--	-----	------

Dependability:

项目 Item	单位 Unit	标准值 Standard value
最小弯曲半径(一次) Min.bending radius static	mm	5
最小弯曲半径(重复) Min.bending radius repeated	mm	-
工作温度范围 Operating temperature	°C	-55~+200

Use tips:

存储环境 Storage environment	温度: 30°C以下; 湿度: 20%~65%	
最佳保存周期 The best save cycle	2个月; 2个月以上作业性下降, 如上锡效果变差, 但电性能不受影响。夏季高温高湿环境开剥后需尽快流转	
加工温度 Processing temperature	260°C的极限情况下, 可短时间承受; 300°C以上分子通常带有的等端基会分解; 400°C以上发生显著的热分解	
铁氟龙收缩 Teflon Shrink	固有材料特性。绝缘: 0.2mm以下; 护套: 0.3mm以下	

护套窜动 Jacket traverse	加工长度(护套残留长度)低于5cm易发生	
包装 (Packing mode)	单位 Unit	
每盘长度 Packing mode	1000米	
每盘接头数 The length of each plate	≤4	
每盘最短长度 The shortest length of each root	≧50米	

Test Report

No. SHAEC2100564501

Date: 15 Jan 2021

Page 1 of 8

3M CHINA LIMITED
222 TIANLIN ROAD, SHANGHAI

The following sample(s) was/were submitted and identified on behalf of the clients as : 3M 9448A

SGS Job No. : SP21-000647 - SH
Model No. : 3M 9448A
Client Ref. Information : 3M 9448AB
Date of Sample Received : 11 Jan 2021
Testing Period : 11 Jan 2021 - 15 Jan 2021
Test Requested : Selected test(s) as requested by client.
Test Method : Please refer to next page(s).
Test Results : Please refer to next page(s).
Conclusion : Based on the performed tests on submitted sample(s), the results of Cadmium, Lead, Mercury, Hexavalent chromium, Polybrominated biphenyls (PBBs), Polybrominated diphenyl ethers (PBDEs) and Phthalates such as Bis(2-ethylhexyl) phthalate (DEHP), Butyl benzyl phthalate (BBP), Dibutyl phthalate (DBP) and Diisobutyl phthalate (DIBP) comply with the limits as set by RoHS Directive (EU) 2015/863 amending Annex II to Directive 2011/65/EU.

Signed for and on behalf of
SGS-CSTC Standards Technical Services (Shanghai) Co., Ltd.

Carol Luo

Carol Luo
Approved Signatory

scan to see the report



SHAEC2100564501



Unless otherwise agreed in writing, this document is issued by the Company subject to its General Conditions of Service printed overleaf, available on request or accessible at <http://www.sgs.com/en/Terms-and-Conditions.aspx> and, for electronic format documents, subject to Terms and Conditions for Electronic Documents at <http://www.sgs.com/en/Terms-and-Conditions/Terms-e-Documents.aspx>. Attention is drawn to the limitation of liability, indemnification and jurisdiction issues defined therein. Any holder of this document is advised that information contained hereon reflects the Company's findings at the time of its intervention only and within the limits of Client's instructions, if any. The Company's sole responsibility is to its Client and this document does not exonerate parties to a transaction from exercising all their rights and obligations under the transaction documents. This document cannot be reproduced except in full, without prior written approval of the Company. Any unauthorized alteration, forgery or falsification of the content or appearance of this document is unlawful and offenders may be prosecuted to the fullest extent of the law. Unless otherwise stated the results shown in this test report refer only to the sample(s) tested.

Attention: To check the authenticity of testing / inspection report & certificate, please contact us at telephone: (86-755) 8307 1443, or email: CN.Doccheck@sgs.com

13th Building, No. 889 Yishan Road Xuhui District, Shanghai China 200233 t E&E (86-21) 61402553 f E&E (86-21) 64953679 www.sgs.com
中国·上海·徐汇区宜山路889号3号楼 邮编: 200233 t HL (86-21) 61402594 f HL (86-21) 61156899 e sgs.china@sgs.com

Test Results :

Test Part Description :

Specimen No.	SGS Sample ID	Description
SN1	SHA21-005645.001	White translucent adhesive film

Remarks :

- (1) 1 mg/kg = 0.0001%
- (2) MDL = Method Detection Limit
- (3) ND = Not Detected (< MDL)
- (4) "-" = Not Regulated

RoHS Directive (EU) 2015/863 amending Annex II to Directive 2011/65/EU

Test Method : With reference to IEC 62321-4:2013+AMD1:2017, IEC62321-5:2013, IEC62321-7-2:2017, IEC 62321-6:2015 and IEC62321-8:2017, analyzed by ICP-OES, UV-Vis and GC-MS.

Test Item(s)	Limit	Unit	MDL	001
Cadmium (Cd)	100	mg/kg	2	ND
Lead (Pb)	1000	mg/kg	2	ND
Mercury (Hg)	1000	mg/kg	2	ND
Hexavalent Chromium (Cr(VI))	1000	mg/kg	8	ND
Sum of PBBs	1000	mg/kg	-	ND
Monobromobiphenyl	-	mg/kg	5	ND
Dibromobiphenyl	-	mg/kg	5	ND
Tribromobiphenyl	-	mg/kg	5	ND
Tetrabromobiphenyl	-	mg/kg	5	ND
Pentabromobiphenyl	-	mg/kg	5	ND
Hexabromobiphenyl	-	mg/kg	5	ND
Heptabromobiphenyl	-	mg/kg	5	ND
Octabromobiphenyl	-	mg/kg	5	ND
Nonabromobiphenyl	-	mg/kg	5	ND
Decabromobiphenyl	-	mg/kg	5	ND
Sum of PBDEs	1000	mg/kg	-	ND
Monobromodiphenyl ether	-	mg/kg	5	ND
Dibromodiphenyl ether	-	mg/kg	5	ND
Tribromodiphenyl ether	-	mg/kg	5	ND
Tetrabromodiphenyl ether	-	mg/kg	5	ND



Unless otherwise agreed in writing, this document is issued by the Company subject to its General Conditions of Service printed overleaf, available on request or accessible at <http://www.sgs.com/en/Terms-and-Conditions.aspx> and, for electronic format documents, subject to Terms and Conditions for Electronic Documents at <http://www.sgs.com/en/Terms-and-Conditions/Terms-e-Documents.aspx>. Attention is drawn to the limitation of liability, indemnification and jurisdiction issues defined therein. Any holder of this document is advised that information contained hereon reflects the Company's findings at the time of its intervention only and within the limits of Client's instructions, if any. The Company's sole responsibility is to its Client and this document does not exonerate parties to a transaction from exercising all their rights and obligations under the transaction documents. This document cannot be reproduced except in full, without prior written approval of the Company. Any unauthorized alteration, forgery or falsification of the content or appearance of this document is unlawful and offenders may be prosecuted to the fullest extent of the law. Unless otherwise stated the results shown in this test report refer only to the sample(s) tested.

Attention: To check the authenticity of testing /inspection report & certificate, please contact us at telephone: (86-755) 8307 1443, or email: CN.Doccheck@sgs.com
 3rd Building, No. 889 Yishan Road Xuhui District, Shanghai China 200233 t E&E (86-21) 61402553 f E&E (86-21) 64953679 www.sgs.com.cn
 中国·上海·徐汇区宜山路889号3号楼 邮编: 200233 t HL (86-21) 61402594 f HL (86-21) 61156899 e sgs.china@sgs.com

Test Report

No. SHAEC2100564501

Date: 15 Jan 2021

Page 3 of 8

<u>Test Item(s)</u>	<u>Limit</u>	<u>Unit</u>	<u>MDL</u>	<u>001</u>
Pentabromodiphenyl ether	-	mg/kg	5	ND
Hexabromodiphenyl ether	-	mg/kg	5	ND
Heptabromodiphenyl ether	-	mg/kg	5	ND
Octabromodiphenyl ether	-	mg/kg	5	ND
Nonabromodiphenyl ether	-	mg/kg	5	ND
Decabromodiphenyl ether	-	mg/kg	5	ND
Di-butyl Phthalate (DBP)	1000	mg/kg	50	ND
Benzyl Butyl Phthalate (BBP)	1000	mg/kg	50	ND
Di-2-Ethyl Hexyl Phthalate (DEHP)	1000	mg/kg	50	ND
Diisobutyl Phthalates (DIBP)	1000	mg/kg	50	ND

Notes :

- (1) The maximum permissible limit is quoted from RoHS Directive (EU) 2015/863. IEC 62321 series is equivalent to EN 62321 series
https://www.cenelec.eu/dyn/www/f?p=104:30:1742232870351101:::FSP_ORG_ID,FSP_LANG_ID:1258637,25
- (2) The restriction of DEHP, BBP, DBP and DIBP shall apply to medical devices, including in vitro medical devices, and monitoring and control instruments, including industrial monitoring and control instruments, from 22 July 2021.
- (3) The restriction of DEHP, BBP, DBP and DIBP shall not apply to toys which are already subject to the restriction of DEHP, BBP, DBP and DIBP through entry 51 of Annex XVII to Regulation (EC) No 1907/2006.



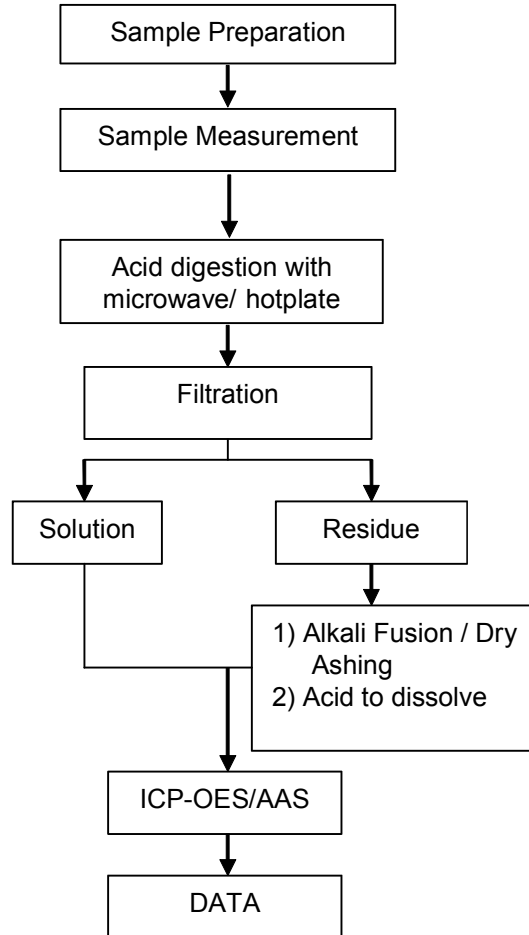
Unless otherwise agreed in writing, this document is issued by the Company subject to its General Conditions of Service printed overleaf, available on request or accessible at <http://www.sgs.com/en/Terms-and-Conditions.aspx> and, for electronic format documents, subject to Terms and Conditions for Electronic Documents at <http://www.sgs.com/en/Terms-and-Conditions/Terms-e-Documents.aspx>. Attention is drawn to the limitation of liability, indemnification and jurisdiction issues defined therein. Any holder of this document is advised that information contained hereon reflects the Company's findings at the time of its intervention only and within the limits of Client's instructions, if any. The Company's sole responsibility is to its Client and this document does not exonerate parties to a transaction from exercising all their rights and obligations under the transaction documents. This document cannot be reproduced except in full, without prior written approval of the Company. Any unauthorized alteration, forgery or falsification of the content or appearance of this document is unlawful and offenders may be prosecuted to the fullest extent of the law. Unless otherwise stated the results shown in this test report refer only to the sample(s) tested.

Attention: To check the authenticity of testing / inspection report & certificate, please contact us at telephone: (86-755) 8307 1443, or email: CN.Doccheck@sgs.com
 3rd Building, No. 889 Yishan Road Xuhui District, Shanghai China 200233 t E&E (86-21) 61402553 f E&E (86-21) 64953679 www.sgs.com.cn
 中国·上海·徐汇区宜山路889号3号楼 邮编: 200233 t HL (86-21) 61402594 f HL (86-21) 61156899 e sgs.china@sgs.com

ATTACHMENTS

Elements (IEC62321) Testing Flow Chart

1) These samples were dissolved totally by pre-conditioning method according to below flow chart.

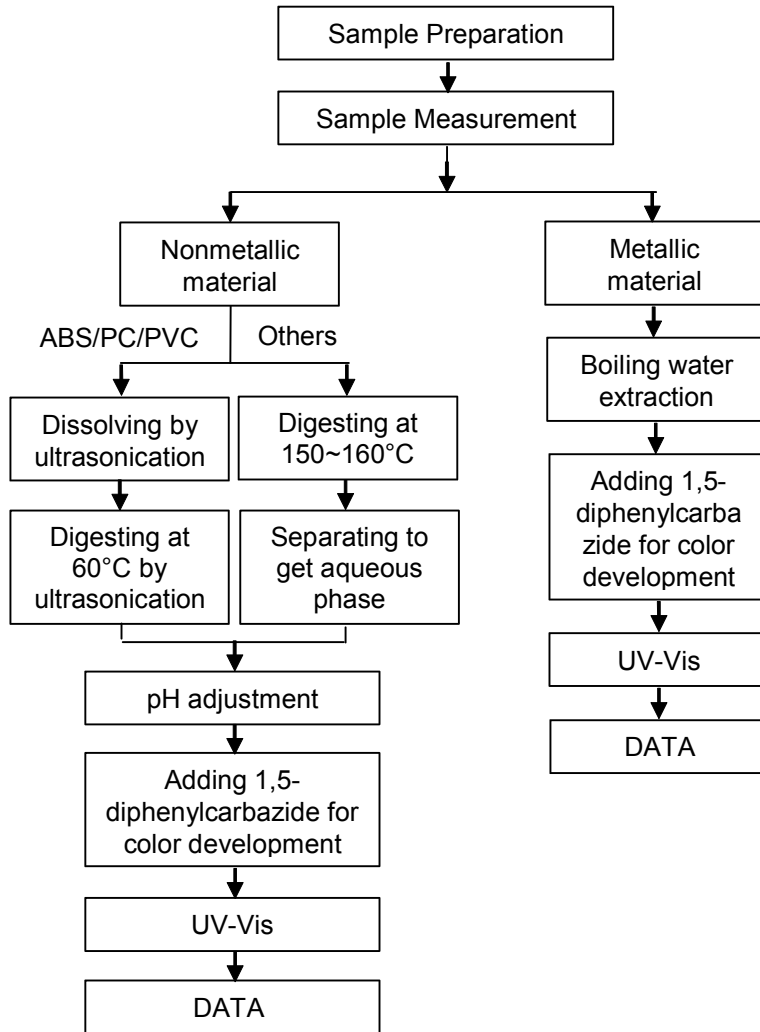


Unless otherwise agreed in writing, this document is issued by the Company subject to its General Conditions of Service printed overleaf, available on request or accessible at <http://www.sgs.com/en/Terms-and-Conditions.aspx> and, for electronic format documents, subject to Terms and Conditions for Electronic Documents at <http://www.sgs.com/en/Terms-and-Conditions/Terms-e-Documents.aspx>. Attention is drawn to the limitation of liability, indemnification and jurisdiction issues defined therein. Any holder of this document is advised that information contained hereon reflects the Company's findings at the time of its intervention only and within the limits of Client's instructions, if any. The Company's sole responsibility is to its Client and this document does not exonerate parties to a transaction from exercising all their rights and obligations under the transaction documents. This document cannot be reproduced except in full, without prior written approval of the Company. Any unauthorized alteration, forgery or falsification of the content or appearance of this document is unlawful and offenders may be prosecuted to the fullest extent of the law. Unless otherwise stated the results shown in this test report refer only to the sample(s) tested.

Attention: To check the authenticity of testing /inspection report & certificate, please contact us at telephone: (86-755) 8307 1443, or email: CN.Doccheck@sgs.com
 3rd Building, No. 889 Yishan Road Xuhui District, Shanghai China 200233 t E&E (86-21) 61402553 f E&E (86-21) 64953679 www.sgs.com.cn
 中国·上海·徐汇区宜山路889号3号楼 邮编: 200233 t HL (86-21) 61402594 f HL (86-21) 61156899 e sgs.china@sgs.com

ATTACHMENTS

Hexavalent Chromium (Cr(VI)) Testing Flow Chart

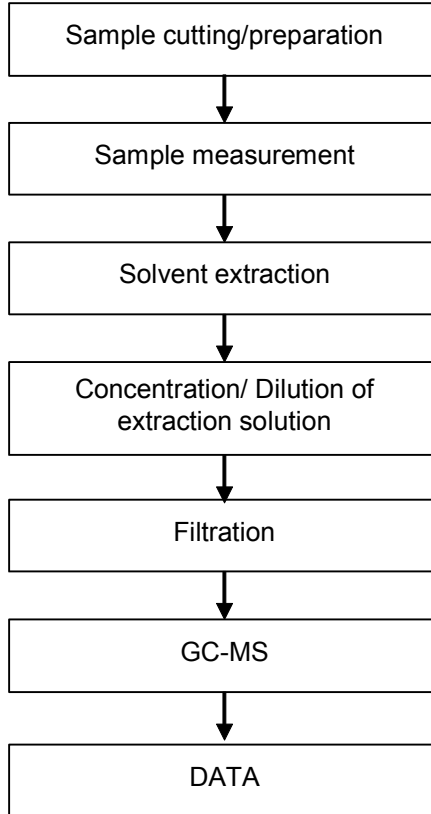


Unless otherwise agreed in writing, this document is issued by the Company subject to its General Conditions of Service printed overleaf, available on request or accessible at <http://www.sgs.com/en/Terms-and-Conditions.aspx> and, for electronic format documents, subject to Terms and Conditions for Electronic Documents at <http://www.sgs.com/en/Terms-and-Conditions/Terms-e-Documents.aspx>. Attention is drawn to the limitation of liability, indemnification and jurisdiction issues defined therein. Any holder of this document is advised that information contained hereon reflects the Company's findings at the time of its intervention only and within the limits of Client's instructions, if any. The Company's sole responsibility is to its Client and this document does not exonerate parties to a transaction from exercising all their rights and obligations under the transaction documents. This document cannot be reproduced except in full, without prior written approval of the Company. Any unauthorized alteration, forgery or falsification of the content or appearance of this document is unlawful and offenders may be prosecuted to the fullest extent of the law. Unless otherwise stated the results shown in this test report refer only to the sample(s) tested.

Attention: To check the authenticity of testing /inspection report & certificate, please contact us at telephone: (86-755) 8307 1443, or email: CN.Doccheck@sgs.com
 3rd Building, No. 889 Yishan Road Xuhui District, Shanghai China 200233 t E&E (86-21) 61402553 f E&E (86-21) 64953679 www.sgs.com
 中国·上海·徐汇区宜山路889号3号楼 邮编: 200233 t HL (86-21) 61402594 f HL (86-21) 61156899 e sgs.china@sgs.com

ATTACHMENTS

PBBs/PBDEs Testing Flow Chart

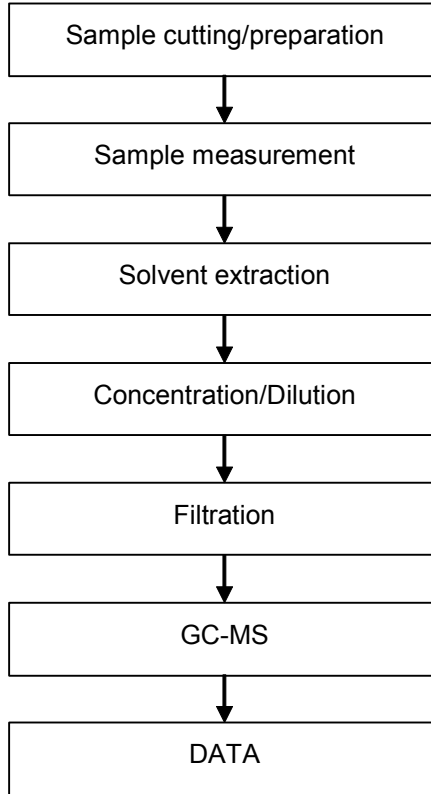


Unless otherwise agreed in writing, this document is issued by the Company subject to its General Conditions of Service printed overleaf, available on request or accessible at <http://www.sgs.com/en/Terms-and-Conditions.aspx> and, for electronic format documents, subject to Terms and Conditions for Electronic Documents at <http://www.sgs.com/en/Terms-and-Conditions/Terms-e-Documents.aspx>. Attention is drawn to the limitation of liability, indemnification and jurisdiction issues defined therein. Any holder of this document is advised that information contained hereon reflects the Company's findings at the time of its intervention only and within the limits of Client's instructions, if any. The Company's sole responsibility is to its Client and this document does not exonerate parties to a transaction from exercising all their rights and obligations under the transaction documents. This document cannot be reproduced except in full, without prior written approval of the Company. Any unauthorized alteration, forgery or falsification of the content or appearance of this document is unlawful and offenders may be prosecuted to the fullest extent of the law. Unless otherwise stated the results shown in this test report refer only to the sample(s) tested.

Attention: To check the authenticity of testing /inspection report & certificate, please contact us at telephone: (86-755) 8307 1443, or email: CN.Doccheck@sgs.com
 3rd Building, No. 889 Yishan Road Xuhui District, Shanghai China 200233 t E&E (86-21) 61402553 f E&E (86-21) 64953679 www.sgs.com.cn
 中国·上海·徐汇区宜山路889号3号楼 邮编: 200233 t HL (86-21) 61402594 f HL (86-21) 61156899 e sgs.china@sgs.com

ATTACHMENTS

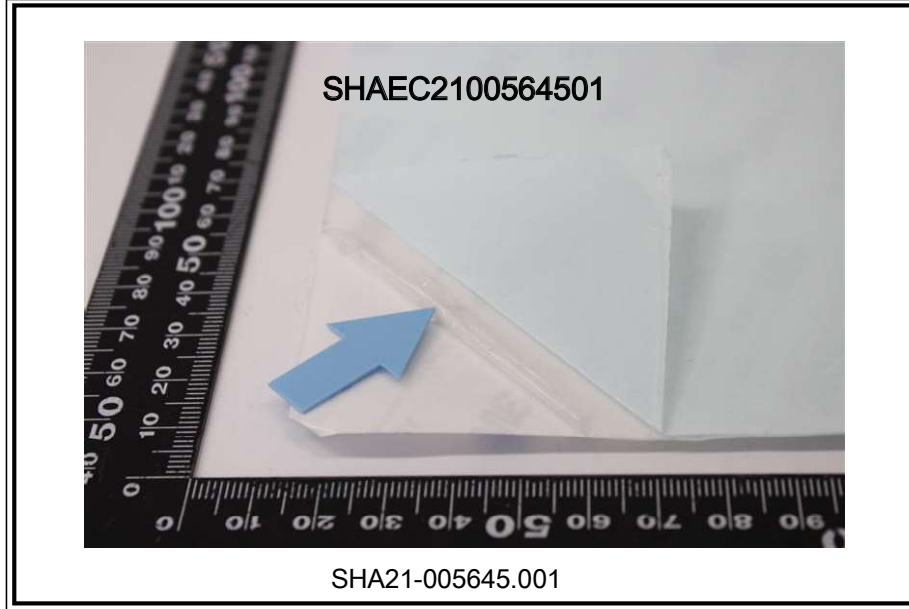
Phthalates Testing Flow Chart



Unless otherwise agreed in writing, this document is issued by the Company subject to its General Conditions of Service printed overleaf, available on request or accessible at <http://www.sgs.com/en/Terms-and-Conditions.aspx> and, for electronic format documents, subject to Terms and Conditions for Electronic Documents at <http://www.sgs.com/en/Terms-and-Conditions/Terms-e-Documents.aspx>. Attention is drawn to the limitation of liability, indemnification and jurisdiction issues defined therein. Any holder of this document is advised that information contained hereon reflects the Company's findings at the time of its intervention only and within the limits of Client's instructions, if any. The Company's sole responsibility is to its Client and this document does not exonerate parties to a transaction from exercising all their rights and obligations under the transaction documents. This document cannot be reproduced except in full, without prior written approval of the Company. Any unauthorized alteration, forgery or falsification of the content or appearance of this document is unlawful and offenders may be prosecuted to the fullest extent of the law. Unless otherwise stated the results shown in this test report refer only to the sample(s) tested.

Attention: To check the authenticity of testing /inspection report & certificate, please contact us at telephone: (86-755) 8307 1443, or email: CN.Doccheck@sgs.com
 3rd Building, No. 889 Yishan Road Xuhui District, Shanghai China 200233 t E&E (86-21) 61402553 f E&E (86-21) 64953679 www.sgs.com.cn
 中国·上海·徐汇区宜山路889号3号楼 邮编: 200233 t HL (86-21) 61402594 f HL (86-21) 61156899 e sgs.china@sgs.com

Sample photo:



SGS authenticate the photo on original report only

*** End of Report ***



Unless otherwise agreed in writing, this document is issued by the Company subject to its General Conditions of Service printed overleaf, available on request or accessible at <http://www.sgs.com/en/Terms-and-Conditions.aspx> and, for electronic format documents, subject to Terms and Conditions for Electronic Documents at <http://www.sgs.com/en/Terms-and-Conditions/Terms-e-Documents.aspx>. Attention is drawn to the limitation of liability, indemnification and jurisdiction issues defined therein. Any holder of this document is advised that information contained hereon reflects the Company's findings at the time of its intervention only and within the limits of Client's instructions, if any. The Company's sole responsibility is to its Client and this document does not exonerate parties to a transaction from exercising all their rights and obligations under the transaction documents. This document cannot be reproduced except in full, without prior written approval of the Company. Any unauthorized alteration, forgery or falsification of the content or appearance of this document is unlawful and offenders may be prosecuted to the fullest extent of the law. Unless otherwise stated the results shown in this test report refer only to the sample(s) tested.

Attention: To check the authenticity of testing / inspection report & certificate, please contact us at telephone: (86-755) 8307 1443, or email: CN.Doccheck@sgs.com

Test Report

No. CANEC2105719213

Date: 20 Apr 2021

Page 1 of 6

DONG GUAN HUI YANG SPONGE CO.,LTD

DA LING VILLAGE DA LING SHAN TOWN,DONG GUAN CITY,GUANG DONG PROVINCE

The following sample(s) was/were submitted and identified on behalf of the clients as : SPONGE

SGS Job No. : CP21-017294 - SZ

Date of Sample Received : 12 Apr 2021

Testing Period : 12 Apr 2021 - 20 Apr 2021

Test Requested : Selected test(s) as requested by client.

Test Method : Please refer to next page(s).

Test Results : Please refer to next page(s).

Conclusion : Based on the performed tests on submitted sample(s), the results of Lead, Mercury, Cadmium, Hexavalent chromium, Polybrominated biphenyls (PBBs), Polybrominated diphenyl ethers (PBDEs) and Phthalates such as Bis(2-ethylhexyl) phthalate (DEHP), Butyl benzyl phthalate (BBP), Dibutyl phthalate (DBP), and Diisobutyl phthalate (DIBP) comply with the limits as set by RoHS Directive (EU) 2015/863 amending Annex II to Directive 2011/65/EU.

Signed for and on behalf of
SGS-CSTC Standards Technical Services Co., Ltd. Guangzhou Branch

Allie Chen

Allie Chen
Approved Signatory

scan to see the report



CANEC2105719213



Unless otherwise agreed in writing, this document is issued by the Company subject to its General Conditions of Service printed overleaf, available on request or accessible at <http://www.sgs.com/en/Terms-and-Conditions.aspx> and, for electronic format documents, subject to Terms and Conditions for Electronic Documents at <http://www.sgs.com/en/Terms-and-Conditions/Terms-e-Documents.aspx>. Attention is drawn to the limitation of liability, indemnification and jurisdiction issues defined therein. Any holder of this document is advised that information contained hereon reflects the Company's findings at the time of its intervention only and within the limits of Client's instructions, if any. The Company's sole responsibility is to its Client and this document does not exonerate parties to a transaction from exercising all their rights and obligations under the transaction documents. This document cannot be reproduced except in full, without prior written approval of the Company. Any unauthorized alteration, forgery or falsification of the content or appearance of this document is unlawful and offenders may be prosecuted to the fullest extent of the law. Unless otherwise stated the results shown in this test report refer only to the sample(s) tested.

Attention: To check the authenticity of testing/inspection report & certificate, please contact us at telephone: (86-755) 8307 1443, or email: CN.Doccheck@sgs.com

SGS-CSTC Standards Technical Services Co., Ltd.
Guangzhou Branch

198 Kezhu Road, Sciencetech Park Guangzhou Economic & Technology Development District, Guangzhou, China 510663
中国·广州·经济技术开发区科学城科珠路198号 邮编: 510663

t (86-20) 82155555 www.sgs.com.cn
t (86-20) 82155555 sgs.china@sgs.com

Test Results :

Test Part Description :

Specimen No.	SGS Sample ID	Description
SN1	CAN21-057192.002	Black sponge

Remarks :

- (1) 1 mg/kg = 1 ppm = 0.0001%
- (2) MDL = Method Detection Limit
- (3) ND = Not Detected (< MDL)
- (4) "-" = Not Regulated

RoHS Directive (EU) 2015/863 amending Annex II to Directive 2011/65/EU

Test Method : With reference to IEC 62321-4:2013+A1:2017, IEC 62321-5:2013, IEC 62321-7-2:2017 , IEC 62321-6:2015 and IEC 62321-8:2017, analyzed by ICP-OES , UV-Vis and GC-MS .

Test Item(s)	Limit	Unit	MDL	002
Cadmium (Cd)	100	mg/kg	2	ND
Lead (Pb)	1,000	mg/kg	2	ND
Mercury (Hg)	1,000	mg/kg	2	ND
Hexavalent Chromium (CrVI)	1,000	mg/kg	8	ND
Sum of PBBs	1,000	mg/kg	-	ND
Monobromobiphenyl	-	mg/kg	5	ND
Dibromobiphenyl	-	mg/kg	5	ND
Tribromobiphenyl	-	mg/kg	5	ND
Tetrabromobiphenyl	-	mg/kg	5	ND
Pentabromobiphenyl	-	mg/kg	5	ND
Hexabromobiphenyl	-	mg/kg	5	ND
Heptabromobiphenyl	-	mg/kg	5	ND
Octabromobiphenyl	-	mg/kg	5	ND
Nonabromobiphenyl	-	mg/kg	5	ND
Decabromobiphenyl	-	mg/kg	5	ND
Sum of PBDEs	1,000	mg/kg	-	ND
Monobromodiphenyl ether	-	mg/kg	5	ND
Dibromodiphenyl ether	-	mg/kg	5	ND
Tribromodiphenyl ether	-	mg/kg	5	ND
Tetrabromodiphenyl ether	-	mg/kg	5	ND
Pentabromodiphenyl ether	-	mg/kg	5	ND



Unless otherwise agreed in writing, this document is issued by the Company subject to its General Conditions of Service printed overleaf, available on request or accessible at <http://www.sgs.com/en/Terms-and-Conditions.aspx> and, for electronic format documents, subject to Terms and Conditions for Electronic Documents at <http://www.sgs.com/en/Terms-and-Conditions/Terms-e-Document.aspx>. Attention is drawn to the limitation of liability, indemnification and jurisdiction issues defined therein. Any holder of this document is advised that information contained hereon reflects the Company's findings at the time of its intervention only and within the limits of Client's instructions, if any. The Company's sole responsibility is to its Client and this document does not exonerate parties to a transaction from exercising all their rights and obligations under the transaction documents. This document cannot be reproduced except in full, without prior written approval of the Company. Any unauthorized alteration, forgery or falsification of the content or appearance of this document is unlawful and offenders may be prosecuted to the fullest extent of the law. Unless otherwise stated the results shown in this test report refer only to the sample(s) tested.

Attention: To check the authenticity of testing /inspection report & certificate, please contact us at telephone: (86-755) 8307 1443, or email: CN.Doccheck@sgs.com

Test Report

No. CANEC2105719213

Date: 20 Apr 2021

Page 3 of 6

<u>Test Item(s)</u>	<u>Limit</u>	<u>Unit</u>	<u>MDL</u>	<u>002</u>
Hexabromodiphenyl ether	-	mg/kg	5	ND
Heptabromodiphenyl ether	-	mg/kg	5	ND
Octabromodiphenyl ether	-	mg/kg	5	ND
Nonabromodiphenyl ether	-	mg/kg	5	ND
Decabromodiphenyl ether	-	mg/kg	5	ND
Dibutyl phthalate (DBP)	1,000	mg/kg	50	ND
Butyl benzyl phthalate (BBP)	1,000	mg/kg	50	ND
Bis (2-ethylhexyl) phthalate (DEHP)	1,000	mg/kg	50	ND
Diisobutyl Phthalates (DIBP)	1,000	mg/kg	50	ND

Notes :

- (1) The maximum permissible limit is quoted from RoHS Directive (EU) 2015/863.
- (2) IEC 62321 series is equivalent to EN 62321 series
https://www.cenelec.eu/dyn/www/f?p=104:30:1742232870351101:::FSP_ORG_ID,FSP_LANG_ID:1258637,25
- (3) The restriction of DEHP, BBP, DBP and DIBP shall apply to medical devices, including in vitro medical devices, and monitoring and control instruments, including industrial monitoring and control instruments, from 22 July 2021.



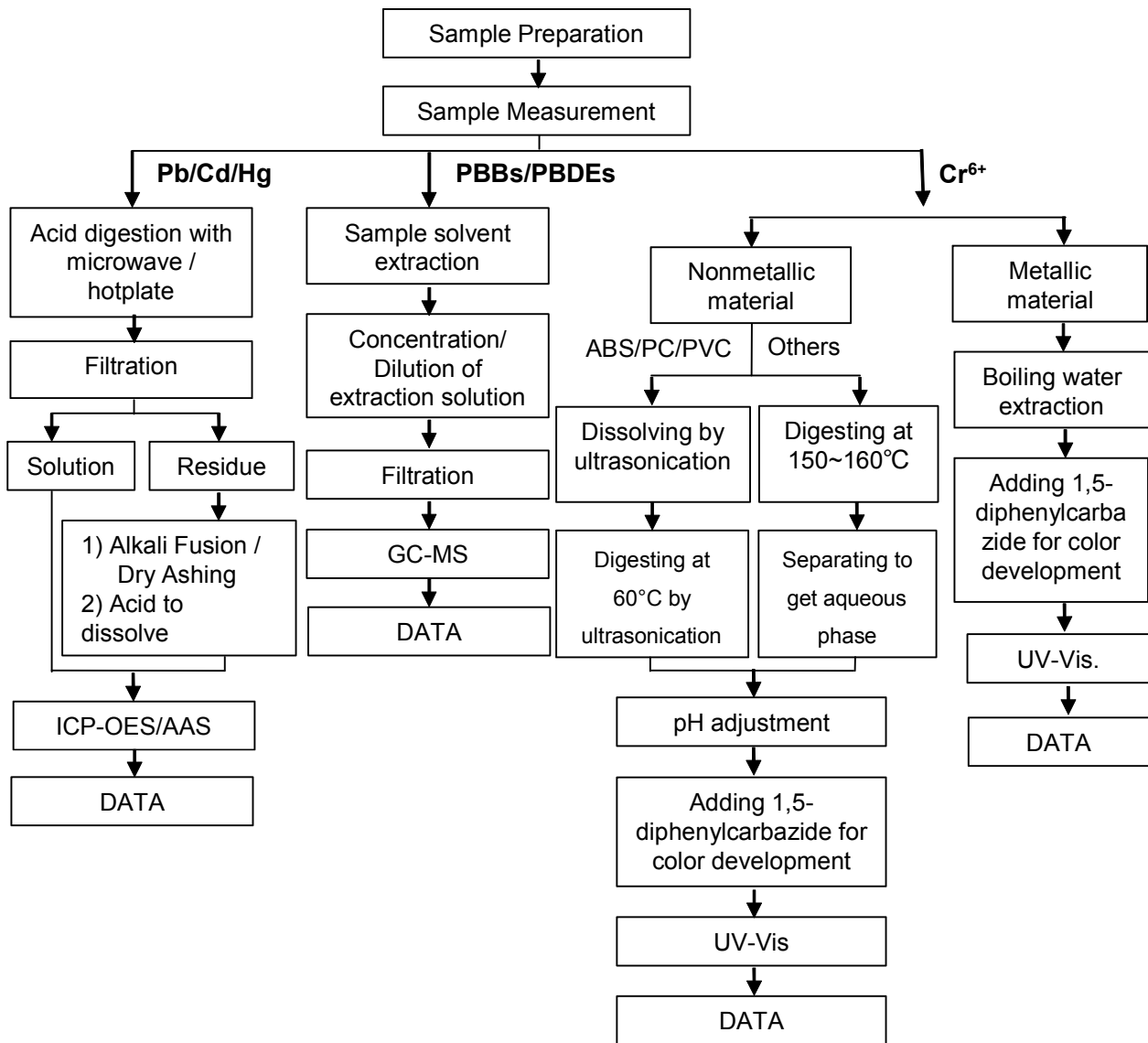
Unless otherwise agreed in writing, this document is issued by the Company subject to its General Conditions of Service printed overleaf, available on request or accessible at <http://www.sgs.com/en/Terms-and-Conditions.aspx> and, for electronic format documents, subject to Terms and Conditions for Electronic Documents at <http://www.sgs.com/en/Terms-and-Conditions/Terms-e-Document.aspx>. Attention is drawn to the limitation of liability, indemnification and jurisdiction issues defined therein. Any holder of this document is advised that information contained hereon reflects the Company's findings at the time of its intervention only and within the limits of Client's instructions, if any. The Company's sole responsibility is to its Client and this document does not exonerate parties to a transaction from exercising all their rights and obligations under the transaction documents. This document cannot be reproduced except in full, without prior written approval of the Company. Any unauthorized alteration, forgery or falsification of the content or appearance of this document is unlawful and offenders may be prosecuted to the fullest extent of the law. Unless otherwise stated the results shown in this test report refer only to the sample(s) tested.

Attention: To check the authenticity of testing / inspection report & certificate, please contact us at telephone: (86-755) 8307 1443, or email: CN.Doccheck@sgs.com

ATTACHMENTS

Pb/Cd/Hg/Cr⁶⁺/PBBs/PBDEs Testing Flow Chart

1) These samples were dissolved totally by pre-conditioning method according to below flow chart. (Cr⁶⁺ and PBBs/PBDEs test method excluded).



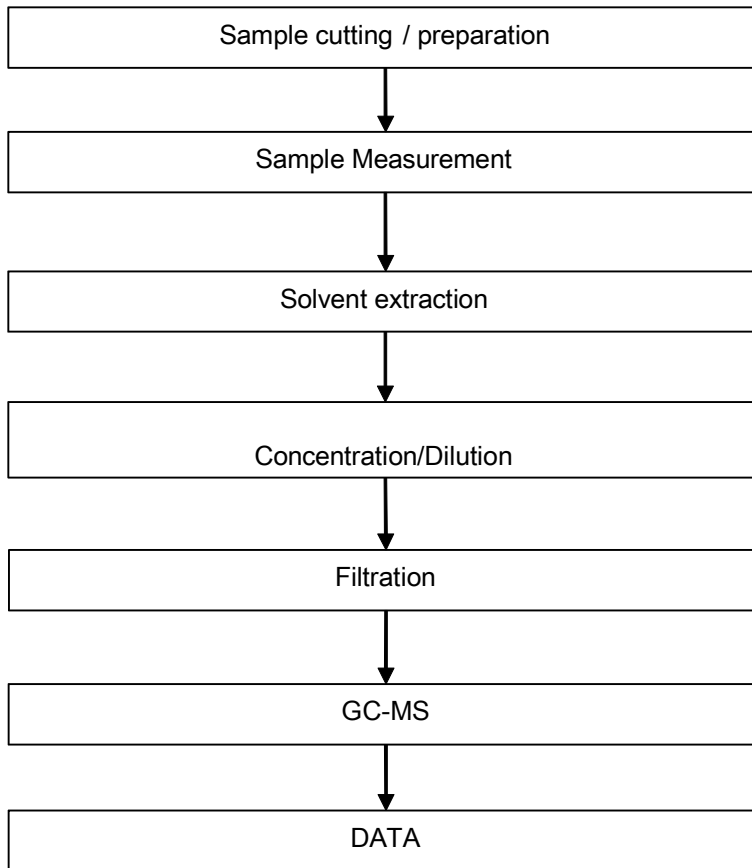
Unless otherwise agreed in writing, this document is issued by the Company subject to its General Conditions of Service printed overleaf, available on request or accessible at <http://www.sgs.com/en/Terms-and-Conditions.aspx> and, for electronic format documents, subject to Terms and Conditions for Electronic Documents at <http://www.sgs.com/en/Terms-and-Conditions/Terms-e-Documents.aspx>. Attention is drawn to the limitation of liability, indemnification and jurisdiction issues defined therein. Any holder of this document is advised that information contained hereon reflects the Company's findings at the time of its intervention only and within the limits of Client's instructions, if any. The Company's sole responsibility is to its Client and this document does not exonerate parties to a transaction from exercising all their rights and obligations under the transaction documents. This document cannot be reproduced except in full, without prior written approval of the Company. Any unauthorized alteration, forgery or falsification of the content or appearance of this document is unlawful and offenders may be prosecuted to the fullest extent of the law. Unless otherwise stated the results shown in this test report refer only to the sample(s) tested.

Attention: To check the authenticity of testing /inspection report & certificate, please contact us at telephone: (86-755) 8307 1443, or email: CN.Doccheck@sgs.com



ATTACHMENTS

Phthalates Testing Flow Chart



Unless otherwise agreed in writing, this document is issued by the Company subject to its General Conditions of Service printed overleaf, available on request or accessible at <http://www.sgs.com/en/Terms-and-Conditions.aspx> and, for electronic format documents, subject to Terms and Conditions for Electronic Documents at <http://www.sgs.com/en/Terms-and-Conditions/Terms-e-Documents.aspx>. Attention is drawn to the limitation of liability, indemnification and jurisdiction issues defined therein. Any holder of this document is advised that information contained hereon reflects the Company's findings at the time of its intervention only and within the limits of Client's instructions, if any. The Company's sole responsibility is to its Client and this document does not exonerate parties to a transaction from exercising all their rights and obligations under the transaction documents. This document cannot be reproduced except in full, without prior written approval of the Company. Any unauthorized alteration, forgery or falsification of the content or appearance of this document is unlawful and offenders may be prosecuted to the fullest extent of the law. Unless otherwise stated the results shown in this test report refer only to the sample(s) tested.

Attention: To check the authenticity of testing / inspection report & certificate, please contact us at telephone: (86-755) 8307 1443, or email: CN.Doccheck@sgs.com

Sample photo:


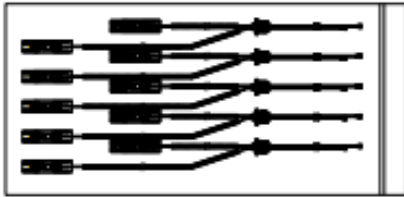
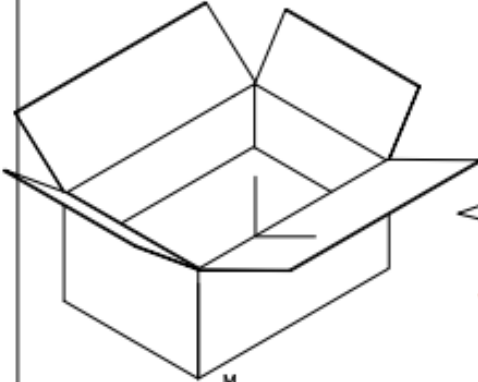
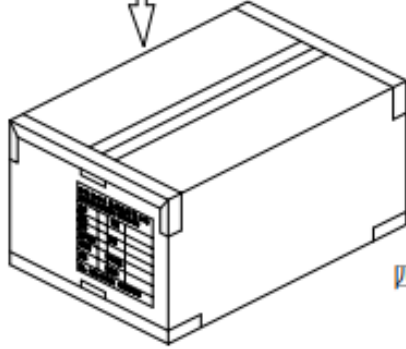


SGS authenticate the photo on original report only

*** End of Report ***



九、包装规范（**Product packaging instructions**）：

South Star		产品包装规范	
日期：2022-05-20		page: 1 of 1	
成品名称：CE2 天线		版本：A	
		客户：东威	
一：成品天线	→	二：装袋，每PE袋装20PCS产品，	
			
		三：装箱，以实际包装为准。	
	↓		
		四：封箱，外箱贴我司生产标签和ROHS标签。	
批准：_____	确认：_____	拟制：雷双露	