

298mm

210mm



Step 3: Check the LED status

Power LED: The table below describes the states of the Power LED.

| | Green | Orange |
|----------|--|-------------------------------|
| Solid | Running at full capability | Running at reduced capability |
| Blinking | Received IP address, but not connected to the server | Did not receive an IP address |

Reduced capability indicates that the AP is getting lower than the required maximum power from the PoE switch, i.e., 802.3af instead of 802.3at.

LAN LEDs: ON when the corresponding link is up.

Radio LEDs: ON when the corresponding radio is operational.

Troubleshooting

- Ensure that the Ethernet cable is correctly plugged into the LAN1 (PoE) port on the O-105ER and the other end of the cable is plugged into an Ethernet jack or a port on a switch that is turned ON.
- If the O-105ER did not receive a valid IP address from the DHCP server, ensure that a DHCP server is ON and available on the VLAN/subnet to which the AP is connected. If the AP still fails to get a valid IP address, you can reboot it once to see if that resolves the problem.
- If you are using Arista Cloud Services, make sure that Internet connectivity is available from the VLAN/subnet to which the AP is connected. Check if the required ports for AP and Server communication – UDP 3851 and default HTTP (TCP port 80) – are open on the Firewall. If you are using a Proxy, Web accelerator or URL content filtering, make sure the settings allow communication between the AP and Arista Cloud Services.

Federal Communication Commission Interference Statement
This equipment has been tested and found to comply with the limits for a Class B digital device, pursuant to Part 15 of the FCC Rules. These limits are designed to provide reasonable protection against harmful interference in a residential installation. This equipment generates, uses and can radiate radio frequency energy and, if not installed and used in accordance with the instructions, may cause harmful interference to radio communications. However, there is no guarantee that interference will not occur in a particular installation. If this equipment does cause harmful interference to radio or television reception, which can be determined by turning the equipment off and on, the user is encouraged to try to correct the interference by one of the following measures:

- Reorient or relocate the receiving antenna.
- Increase the separation between the equipment and receiver.
- Connect the equipment into an outlet on a circuit different from that to which the receiver is connected.
- Consult the dealer or an experienced radio/TV technician for help.

FCC Caution: Any changes or modifications not expressly approved by the party responsible for compliance could void the user's authority to operate this equipment.

This device complies with Part 15 of the FCC Rules. Operation is subject to the following two conditions: (1) This device may not cause harmful interference, and (2) this device must accept any interference received, including interference that may cause undesired operation. Professional installation is required

IMPORTANT NOTE:
FCC Radiation Exposure Statement:
This equipment complies with FCC radiation exposure limits set forth for an uncontrolled environment. This equipment should be installed and operated with minimum distance 20cm between the radiator & your body.

ARISTA

5453 Great America Parkway
Santa Clara, CA 95054
USA
408 547-5500
www.arista.com

Our social responsibility includes conducting business in a manner that minimizes our ecological impact on the environment and reducing waste in our supply chain. To that end, the Quick Start Guide and Safety Manual are available at www.arista.com.

Getting Started
Instructions on getting started with your new access point, including installation and initial configuration instructions, are available at <http://www.arista.com/en/support/product-documentation>

Other documents available at this location include:
You can access Arista documentation at <https://www.arista.com/en/support>

Documents available at this location include:

- Wireless Manager Appliance Quick Start Guide
- Safety and Compliance Guide
- WiFi Regulatory Compliance Statements
- User Manual

You may also download current software, as well as view FAQs, Warranty Information, Knowledge Base articles, Security Advisories, Software Licenses, and Field Notices at <https://www.arista.com/en/support>

Receiving and Inspecting the Equipment
Upon receiving the access point, inspect the shipping boxes and record any external damage. Retain the packing materials if you suspect that part of the shipment is damaged; the carrier may need to inspect them.

If the boxes were not damaged in transit, unpack them carefully. Ensure that you do not discard any accessories that may be packaged in the same box as the main unit.

Inspect the packing list and confirm that you received all listed items. Compare the packing list with your purchase order.

Obtaining Technical Assistance
Customers, partners, resellers, or distributors holding a valid Arista Service Contract can obtain technical support through these sources:

Email: support-wifi@arista.com. This is the easiest way to create a new service request.
Include a detailed description of the problem and the output of 'show tech-support'.

Web: www.arista.com/en/support.
A support case may be created through the support portal on our website.

| | | |
|--|--|--|
| Headquarters | Support | Sales |
| 408 547-5500 | 408 547-5502 | 408 547-5501 |
| www.arista.com | 866 474-0000 | 866 497-0000 |
| | support@arista.com | sales@arista.com |

Arista, Mojo, the Arista logo, and the Mojo logo are trademarks or registered trademarks of Arista Networks, Inc. and Mojo Networks LLC in the U.S. and other countries.
© 2020 Arista Networks, Inc. www.arista.com

O-105ER Access Point Getting Started Guide

Package Contents

You should have received the following components in your O-105ER package.

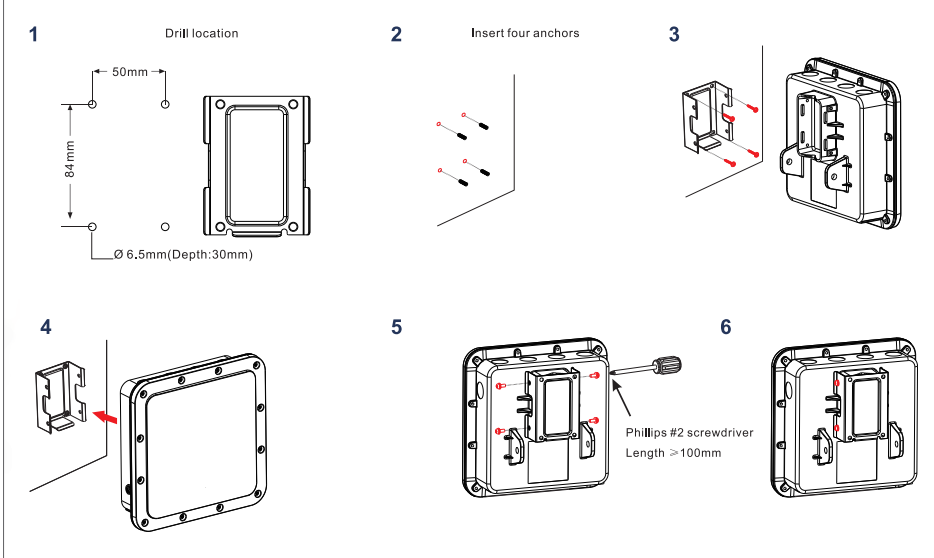


O-105ER

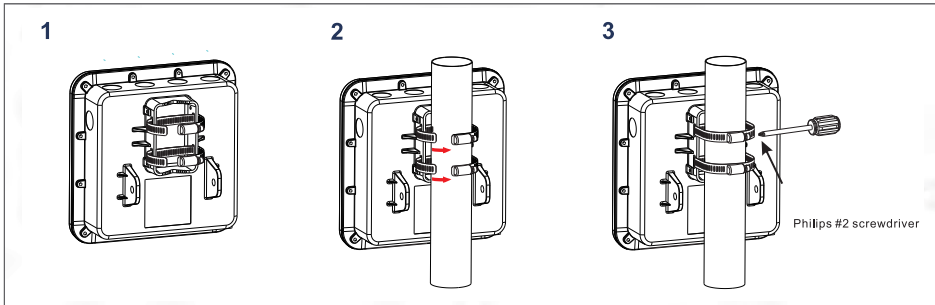
Mounting Accessories

Mounting the O-105ER

Wall Mount: Jo logo facing away from the wall

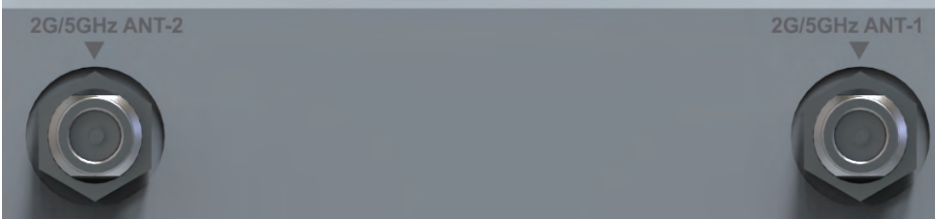


Pole Mount: Jo logo facing away from the pole



Note: The product is designed for specific application and must be professionally installed by a qualified personal who has RF and related knowledge.

External Antennas: Make sure the antennas are connected to their respective "N-type" connector ports shown below.



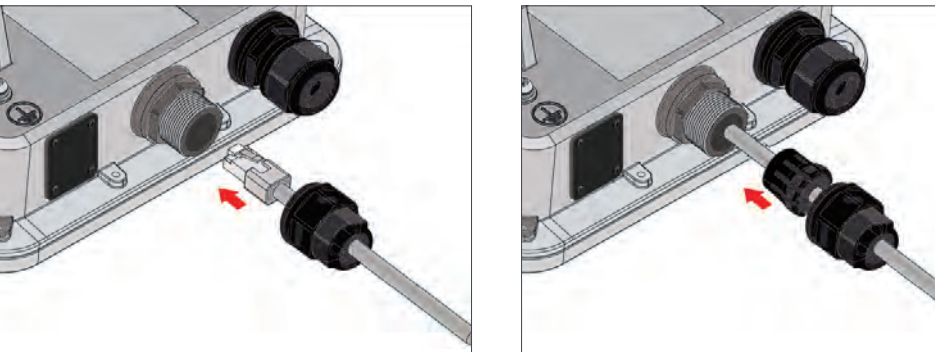
Getting the O-105ER Online

Step 1: Power up

Plug one end of the Ethernet cable into the PoE+ switch or injector and plug the other end into the LAN1 (PoE) on the O-105ER. Make sure the PoE+ source you are using is turned ON.

Step 2: Connect to the network

As you are using PoE+, the O-105ER should already be connected to your network.



正面

背面

成型方式:



(客戶):Arista

(材質): 128g雙銅紙

(顏色):CMYK

(表面處理): NO

(展開尺寸):298x210mm

(成型尺寸):149x210mm

(公差):+-1mm

!

不得含有

WI-RDC-016

要求禁用之有毒,有害物質

| LIMITS UNLESS OTHERWISE NOTED | |
|-------------------------------|----------|
| X. +- | X.°+- |
| .X +- | .X° +- |
| .XX +- | .XX° +- |
| .XXX +- | .XXX° +- |

| A4 | UNIT | SCALE | SHEET | MODEL No. | | for WP9331E-RJIO | | |
|----------|---------|-----------------------------|-------|-----------|--|--|--|--------|
| | MM | NON | 1(1) | PART NAME | | QSG | | |
| APPROVED | CHECKED | DESIGNED | | PART No. | | 5153* | | REV A3 |
| | | Dereck 蔣飛龍 2020-01-10 | | LITEON | | 光寶科技股份有限公司 LITE-ON TECHNOLOGY CORP. | | |