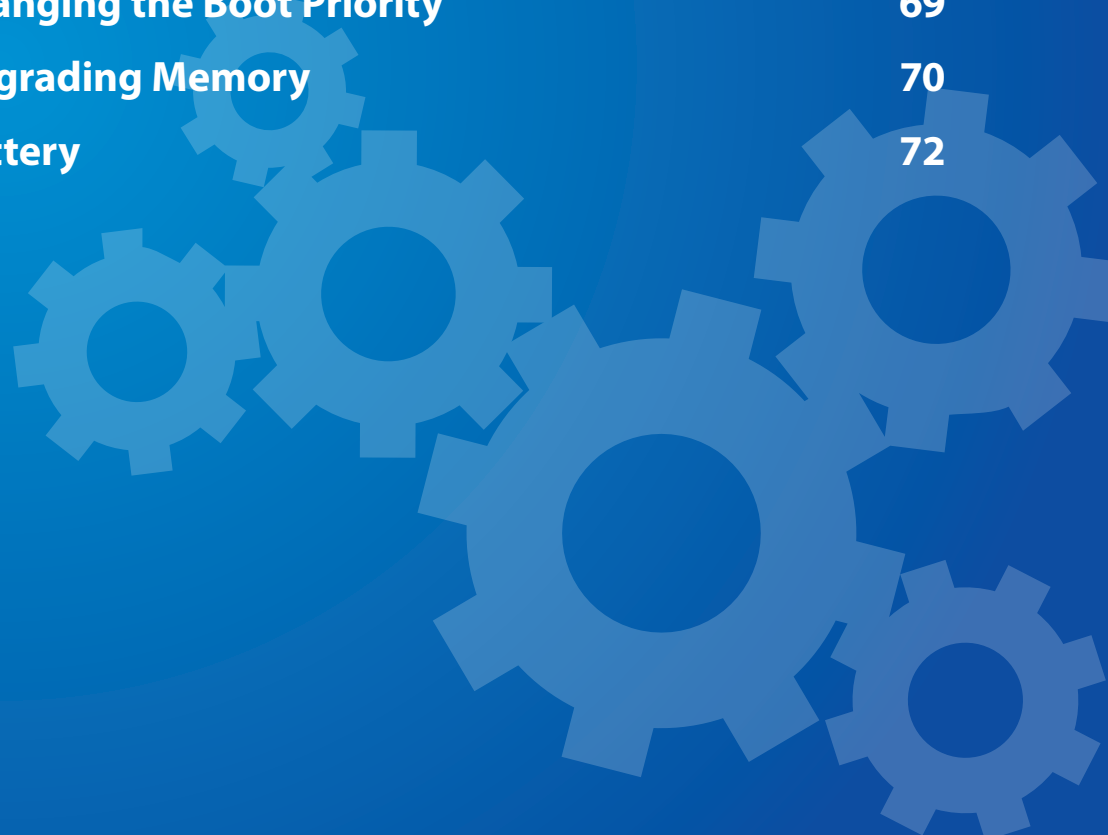





Chapter 3. Settings and Upgrade




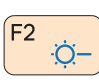
LCD Brightness Control	62
Easy Settings (Optional)	63
BIOS Setup	64
Setting a Boot Password	66
Changing the Boot Priority	69
Upgrading Memory	70
Battery	72


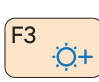


You can adjust the LCD brightness in 8 levels.

 The screen brightness is automatically set to the brightest level when AC power is connected and the brightness is automatically set dimmer when the computer runs on battery power to extend the battery use time.

Controlling the Brightness Using the Keyboard

Adjust the LCD brightness by pressing the  +  key or the  +  key.

The LCD brightness can change up to 8 levels and the brightness increases by 1 level when pressing the  +  key once.

 • **Maintaining the changed LCD brightness even after turning the computer on again**

To maintain the LCD brightness set by using the brightness control keys or through the Power Options, follow the procedures below.

1. Click **Control Panel > Hardware and Sound > Power Options**.
2. Click **Change the settings** of the currently configured mode.



3. Adjust the display brightness adjustment menu bar and click the **Save the changes** button.

- **Saving battery power consumption**

Decreases the LCD brightness when the computer is running on battery power to save battery power consumption.

- **LCD bad pixels principle of computer**

Samsung observes the specifications regarding strict quality and reliability of LCD. But in spite of that, it is inevitable that there might be a small number of bad pixels. A large number of bad pixels can cause problems in appearance, but a small number of pixels doesn't affect the computer performance.

Therefore Samsung observes and manages the following dot principles:

- Bright dot : 2 or less
- Black dot : 4 or less
- Combination of Bright and Dark : 4 or less



Instructions for Cleaning the LCD

Clean the LCD panel with a soft cloth lightly moistened with computer cleansing detergent moving in one direction.

Cleaning the LCD panel with excessive force can damage the LCD.

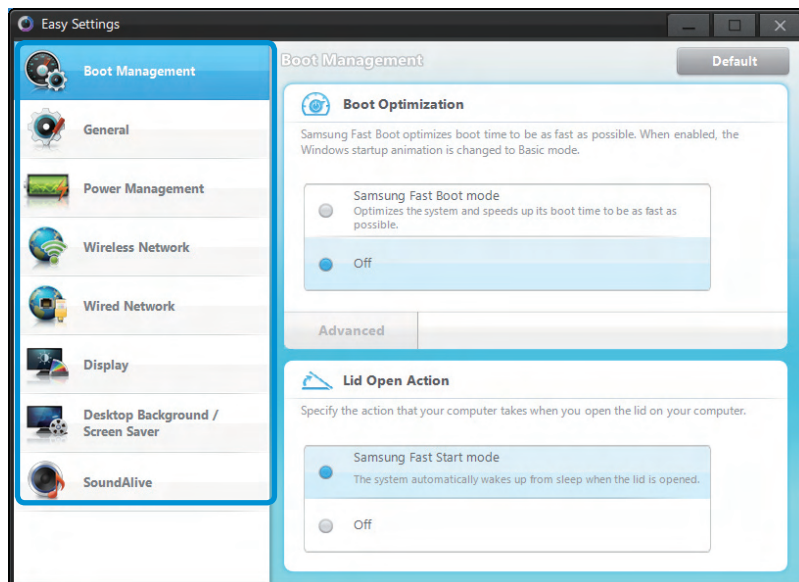
The **Easy Settings** is the integrated Samsung software control program that allows users to configure various settings.



- This description is for models that support this function running on Windows 7.
- The screen image and terminology may change depending on the model.
- Depending on the program version, some functions may not be provided or different functions may be provided.

1 Press the **Fn** + **F1** key combination to launch the **Easy Settings**.

2 Select an item to configure the corresponding function.



Functions

Boot Management (Optional)	You can configure Boot Optimization, Power Button settings, Lid Open Action.
General	You can configure USB Charging, Battery Life Extender, Silent Mode, Keyboard backlit, User Account Control, Intel Rapid Start Technology.
Power Management	You can configure Power Plan (high-performance, power-saving, Samsung optimal mode), Eco Mode, the power-saving settings and the display settings.
Wireless Network	You can configure whether to use the Bluetooth and Wi-Fi options.
Wired Network	You can select automatic or fixed IP settings.
Display	You can configure external display devices, and the screen brightness/color.
Desktop Background / Screen Saver	You can configure the Desktop background and the screen saver.
SoundAlive	You can configure the sound mode (Music, Classic, Concert Hall, Movie, 3D Depth Sound Mode, Advanced, etc.).

The BIOS Setup enables you to configure your computer hardware according to your needs.




- Use the BIOS setup to define a boot password, change the booting priority, or add a new device.
- Since incorrect settings may cause your system to malfunction or crash, take care when configuring the BIOS.
- The functions of the BIOS setup are subject to change for product function enhancement purposes.
- The BIOS Setup menus and items may differ depending on your computer model.

Entering the BIOS Setup

- 1 Turn the computer on.
Immediately press the **F2** key several times.
- 2 After a moment, the BIOS setup screen appears.
The items in the BIOS setup may differ depending on the product.

The BIOS Setup Screen

 The BIOS Setup menus and items may differ depending on your computer model.



Help

Help for the selected item appears automatically.

Setup Items

Setup Menu	Description
SysInfo	This is a description about the basic specifications of the computer.
Advanced	Using this menu, you can configure the major chipsets and additional functions.
Security	Used to configure security functions, including passwords.
Boot	This menu enables you to configure peripherals and booting related settings such as the boot priority.

If you set a password, you have to enter the password when you turn the computer on or enter the BIOS Setup.

By configuring a password, you can restrict system access to authorized users only and protect data and files saved on the computer.



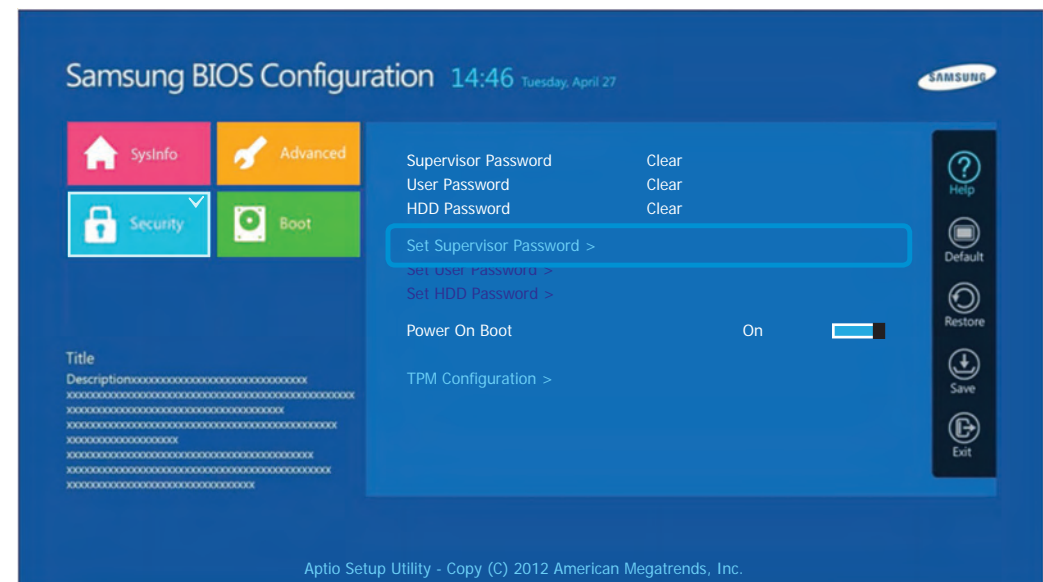
- The password setting provides the following 3 sub menus. (Supervisor Password, User Password and HDD Password)
- Do not lose or forget your password.
- Do not let others know your password.
- If you forget the Supervisor Password or HDD Password, you will need to request assistance from the service center. In this case, a service fee will be charged.
- When you forget the User Password, you can disable the Supervisor Password, and the User Password is also automatically disabled.
- The screen images and terms may differ from actual product depending on the computer model and driver version.

Setting a Supervisor Password

If you set a Supervisor Password, you need to enter the password when you turn the computer on or enter the BIOS Setup.

Setting only the Supervisor Password and User Password is not very secure. You can use an HDD Password as well to increase the security level.

- 1 Select the **Security** menu in the BIOS Setup.
- 2 Select the **Set Supervisor Password**.



Setting a Boot Password

3 Enter a password, press <Enter>, re-enter the password for confirmation, and press <Enter> again.

The password can be up to 20 alphanumeric characters. Special characters are not allowed.

4 The supervisor password has been set.

The supervisor password is required to turn the computer on or to enter the BIOS Setup.



For some models, if the password entered message appears in the **Setup Notice** window, the settings are not complete until the <Enter> key is pressed.

Setting a User Password

This helps prevent unauthorized access to the major settings in the BIOS Setup menu.

Before configuring a user password, a **supervisor password** must have been configured. Deactivating the supervisor password also deactivates the user password.

In the **Set User Password** select and complete the procedures from Step 3 of Setting a Supervisor Password.

Setting Up a Boot Password

To setup a boot password, the administrator password (**Set Supervisor Password**) should be set in advance.

Set the **Password on boot** item to **Enabled**.


Once a boot password is set, you have to enter a password to boot up the computer.

Be sure to remember the password for later use.

Setting up a Hard Disk Drive Password (Optional)

If you set a password for a hard disk drive, it cannot be accessed from another computer.

Select in the **Set HDD Password** item and define a password as described in Step 3 of the Setting up the Supervisor Password.

 • The hard disk drive password setting function is not provided for some models.

• Changing the hard disk drive password

For security purposes, you can only change a hard disk drive password after restarting the computer by pressing the computer **Power** button.

If you cannot change the hard disk drive password or the **HDD Password Frozen** message appears when entering the BIOS Setup and then selecting **Security > HDD Password**, press the **Power** button to turn the computer on again.

Deactivating the Password


- 1 Select on the password to be deactivated.
To unlock the admin password, for instance, press **Set Supervisor Password**.
- 2 In the **Enter Current Password** item, enter the currently configured password and press **<Enter>**.
- 3 Leave the **Enter New Password** item field empty, and press **<Enter>**.
- 4 Leave the **Confirm New Password** field empty, and press **<Enter>**.
The password is deactivated.



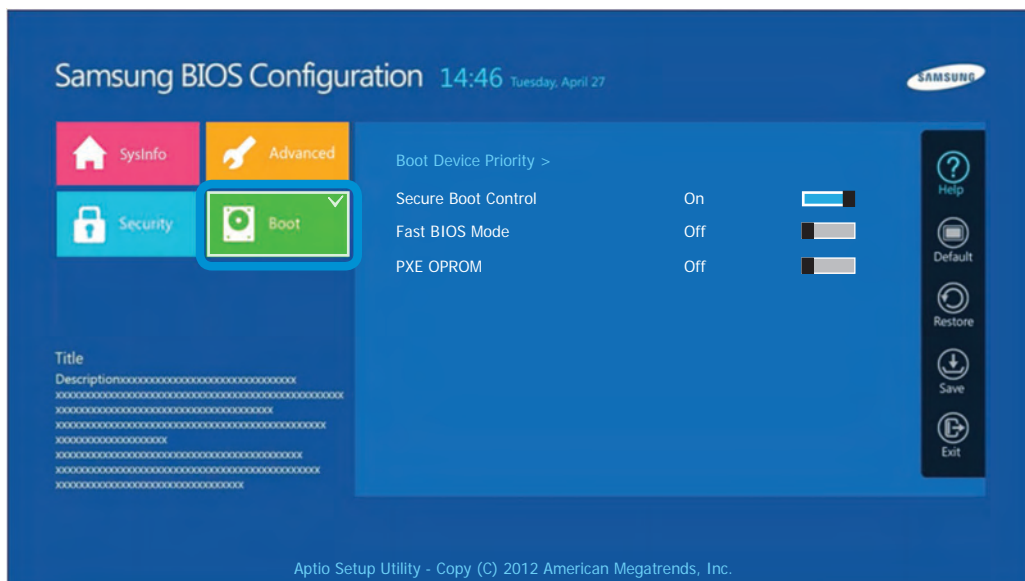
For some models the password is only canceled if the **<Enter>** key is pressed in the **Setup Notice** window.

The computer is configured so that it boots from the HDD with priority, by default.

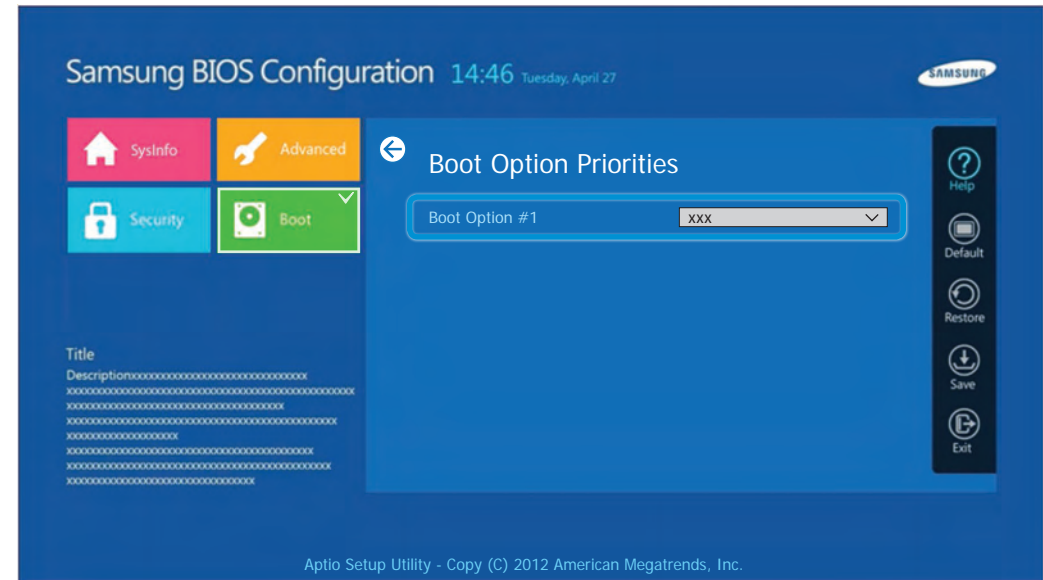
This section will show you how to change the setting so that the computer boots from a USB device.

 The screen image and terms may change depending on the model and the device driver version.

- 1 Connect a bootable USB device.
- 2 Immediately after the computer restarts, press **F2** several times.
- 3 Enter the BIOS Setup. Select the **Boot** menu in the BIOS Setup.



- 4 Set the **Boot Device Priority > Boot Option #1** item on the right screen to USB device.



- 5 Select **Save** and then **Yes**.
- 6 The computer will restart.
Now, the boot priority has been changed so that the device will boot from the USB device with priority.

One or more memory modules are installed on the computer. There are 2 memory slots and users can replace the installed memory or add new memory.



- Replace or install new memory only after shutting the computer down completely. Do not replace or install memory when the computer is in Sleep mode.
- Disconnect main power plug and remove the battery before continuing.
- It is recommended that you add a memory module with the same specification (the same manufacturer and the same capacity).
- The images used for the illustration are of a representative model, therefore the images may differ from the the actual product.

Adding or Replacing Memory Modules

- 1 Remove the screw on the memory compartment cover at the bottom of the computer using a screw driver.



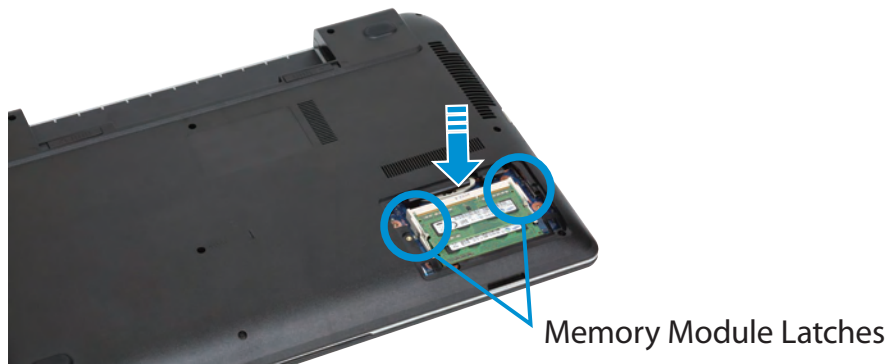
- 2 Remove the screws from the memory slot cover to remove it.



- 3 Insert a new memory module into the memory slot at an angle of approximately 30 degrees aligning it to the angle of the memory slot.



- 4 Push the memory module down so that it is completely fixed. If the memory does not fit easily, push the memory module down while pulling the memory module latches outward.



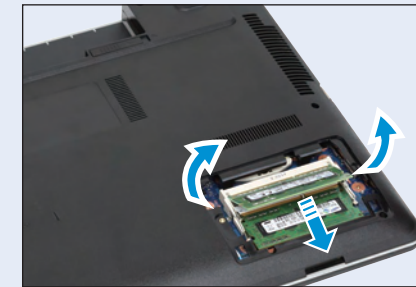
- 5 Close the memory compartment cover and fasten the screw.



Removing a memory module

Pull the memory module latches outward. The memory module will pop up.

Remove the memory module out at an angle of 30 degrees.



Please refer to the following instructions when running the computer on battery power without connecting the AC power.

A Lithium-Ion smart battery is supplied with this computer.


! Precautions

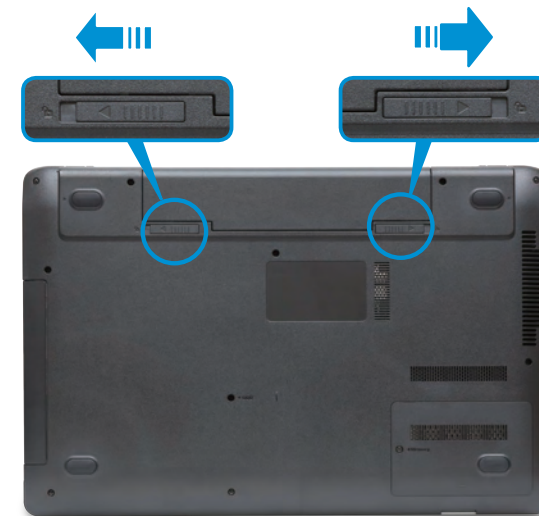
- Use only chargers specified in the User Manual.
- Never heat the battery pack, put it near or in a fire or use at a temperature higher than 60°C, as this may cause fire.
- Never cause a short circuit between the battery pack terminals or disassemble the battery pack.
- Carefully read and follow the precautions printed on the battery and the safety instructions in the User Manual before using the battery.
- Please refer to the system operation environment of this manual and operate and store the battery at room temperature.



- Carefully read and follow the precautions printed on the battery before using the battery.
- Before using your computer for the first time after purchasing it, charge the battery completely.

Installing/Removing the Battery

- 1 Shutdown the system, close the LCD panel and place the computer upside down on a flat surface.
- 2 Pull the two battery latches **outwards** , then remove the battery.



- 3 To install the battery again, slide the battery into the system. The battery latches move inwards and fix the battery automatically.

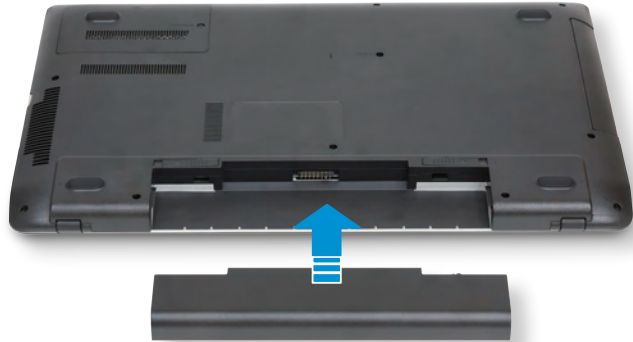


Check if the battery latch has been moved inwards.

Measuring the Remaining Battery Charge

- 1 Attach the battery and connect the AC adapter to the DC-in jack of the computer.

The battery will then start charging.



- 2 When charging is complete, the Power LED turns green.

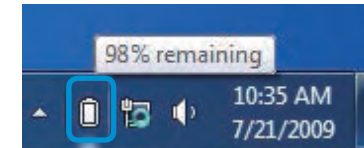
Status	Power LED
While charging is in progress	Red
When charging is complete	Green
The computer is turned on	Blue

Measuring the Remaining Battery Charge

You can view the battery charge status by completing the following procedures.

Confirming the battery charge in the Taskbar

Disconnect the AC adapter and move the mouse cursor over the battery icon in the system tray of the Taskbar to confirm the remaining battery charge.



Battery Usage Time Information

A battery is an expendable supply, so when using it over a long time, the capacity/battery life is shortened. If the battery life is reduced to under half of its initial time, we recommend purchasing a new battery.

When not using the battery for a long time, store the battery after charging it to 30-40% of its capacity. This extends the battery life time.

Extending the Battery Usage Time


Decreasing the LCD Brightness

Press the **Fn** + **F2** keys on the keyboard to decrease the LCD brightness to extend the battery usage time.

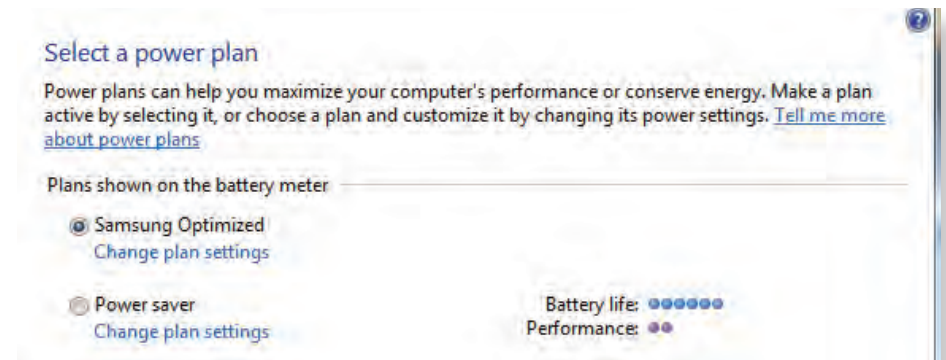
Using the power management program

This program helps you use the battery more efficiently and supports the power mode optimized for the operating environment.

- 1 Click **Start > Control Panel > Hardware and Sound > Power Options**.

Alternatively, right-click the power measuring device icon  in the notification area of the taskbar and select **Power Options**.


- 2 If the following screen appears, select one of the modes.



Using the Battery Calibration Function

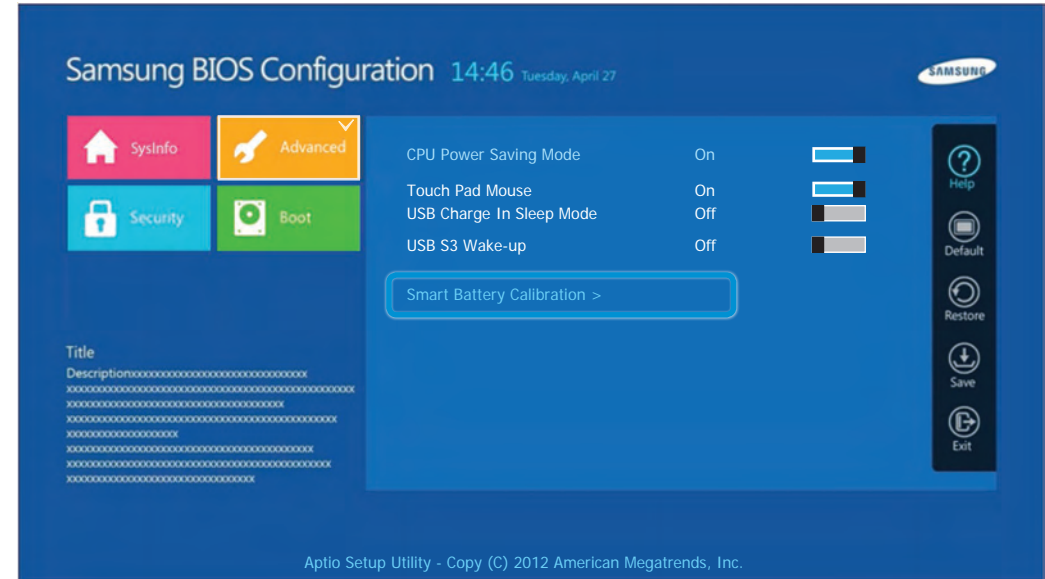
When charging/discharging the battery repeatedly for a short time only, the battery usage time may be reduced by the difference between the actual battery charge and the remaining charge display.

In this case, the actual battery charge and the remaining charge display will be the same by discharging the battery completely using the Battery Calibration function, and then recharging it again.

 The screen images and terms may differ from actual product depending on the computer model and driver version.

- 1 Disconnect the AC power adapter after turning off the computer.
- 2 Turn the computer back on, and press the **F2** key to enter the Setup screen.

3 Select **Advanced** > **Smart Battery Calibration**.



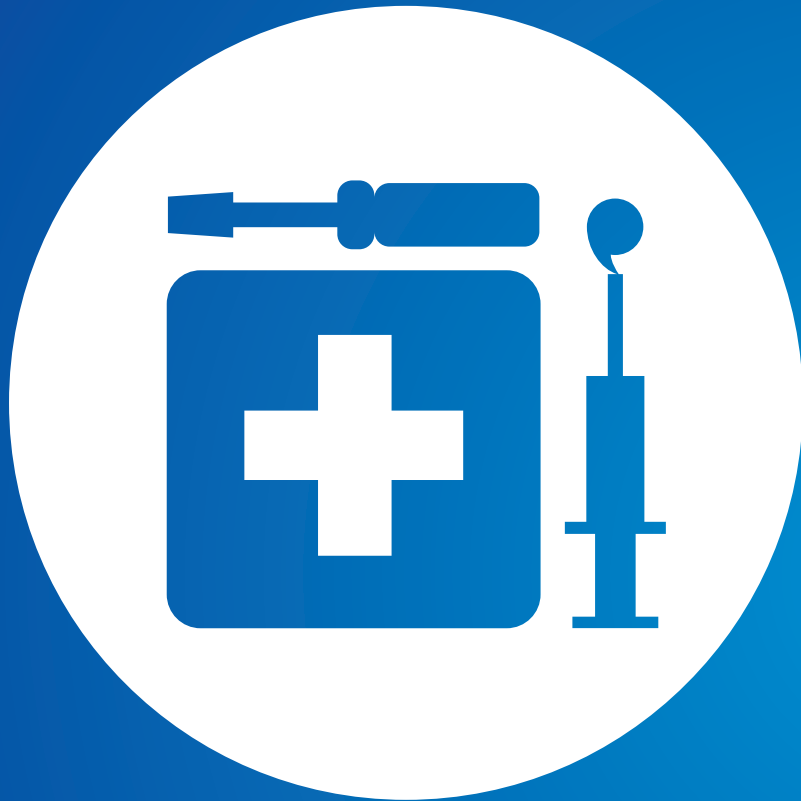
4 The Battery Calibration function is activated and the battery is forcefully discharged. To stop the operation, press the **<Esc>** button.

This operation requires 3~5 hours depending on the battery capacity and the remaining battery charge.


Chapter 4. Backup / Restore

Samsung Recovery Solution (Optional)

77



Samsung Recovery Solution is a program that enables restoring or backing up the hard disk drive for when a problem occurs with the computer.

If the computer fails to boot up, you can restore the computer by pressing the  key in the booting screen.



- Samsung Recovery Solution may not be provided or the version may differ depending on the model. In addition, some functions may not be provided or may differ depending on the version.

For more information on using Samsung Recovery Solution, please refer to the online help of the program.

- The screen images in this document may differ from actual product.
- If your computer does not have an internal ODD, you need an external ODD connected to your computer to use the Backup Function or Restore Function using DVDs.
- The System Software function may not be provided depending on the program version.

Samsung Recovery Solution Functions

Backup/Restore Functions

Backup Function

Backs up drive C or required folders and files.

- **Complete Backup**
Backs up drive C.
- **Data Backup**
Backs up important folders and files.

A problem occurs



Restore Function

Restores major Windows files, drive C, or folders and files to the previous state.

- **Basic Restore**
Restores only major Windows files in a short time.
- **Complete Restore**
Restores drive C to the previous, normal state.
- **Data Restore**
Restores important files or folders to the previously backed up state.

System Software Functions

Samsung Recovery Solution provides system software so that you can reinstall or copy the device drivers and system software necessary for normal operations onto a separate storage device.

Restore Function

Not only can you use Samsung Recovery Solution when Windows is running, but also when you are unable to boot up into Windows. Let's learn how to use Samsung Recovery Solution.

Optional functions such as Initial State Image, Initial Status Backup, and Partitioning are only available in some models.

If the image of the initial state is saved on a DVD or removable storage device, connect the DVD drive or removable storage device to the computer before using the function.

Partition Setup & Initial Status Backup

If you turn your computer on for the first time, the Initial Status Backup function is performed after registering Windows. This function saves an image of the Initial Status of the C drive to a secure location so that users can restore the computer to the Initial Status using the Complete Restore function. An Initial Status Backup is only performed once immediately after the computer is purchased.

1 If you turn the power on for the first time, the Register Windows screen appears. If you register Windows according to the instructions on the screen, the computer will be restarted.

2 After the computer has been restarted, the **Partition Setup** screen appears.

To resize the C and D drives, adjust the partition size using the slide bar and the click **Next**.



The Partition Setup function is only available when the computer is turned on for the first time and will not be available afterwards. Once you have completed the partitioning, it cannot be resized. Partition the disk carefully.

3 The **Initial Status Backup** screen appears. To continue the Initial Status Backup, click **Restart Now**. The computer will restart.

4 The Initial Status Backup is performed to backup the initial status of the C drive to a secure location. This backup image is used for the Complete Restore function that restores your computer to the initial status.

5 When the Initial Status Backup is complete, restart Windows.


Restoring the computer


Restore is a function that enables restoring the computer to a saved point when the computer was purchased or a user-saved point.

The Restore function provides the Basic Restore and Complete Restore options.

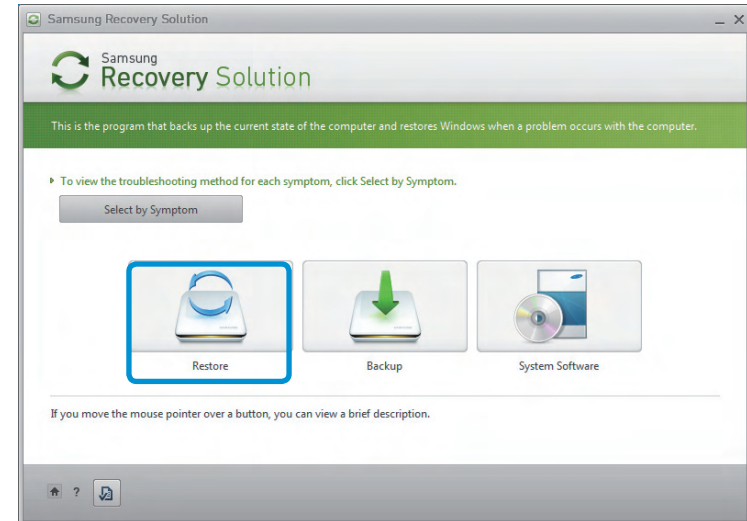
1 – **When Windows is running:**
Click **Samsung Recovery Solution**.


– **When Windows does not start:**

Turn the computer on and press the  key when the boot screen (SAMSUNG logo) appears. After a moment, the computer boots up in Restoration mode and the Samsung Recovery Solution screen appears.

 For computers supporting the touch screen function, the touch screen function does not work during Restore Mode. In this case, please use the touchpad or mouse.

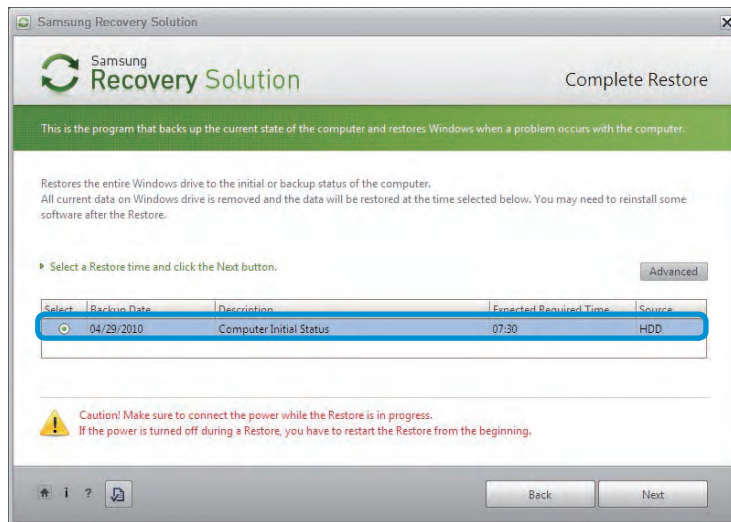
2 If the initial menu screen appears, click **Restore**.



 If you click **Select by Symptom**, the Select by Symptom menu appears. If you select a symptom, a recommended restoration option will blink. Click the restoration option to continue.


3 Select either **Basic Restore** or **Complete Restore** from the Restore menu.

To restore the computer to the initial state, click **Computer Initial State** and perform the restoration process according to the instructions that appear on the screen.



Run **Complete Restore** if the computer does not work even after **Basic Restore** has been completed.

! In the **Advanced** menu, you can change the size of the hard drive partitions (e.g. C: and D:).

- Make sure to backup your data in advance, as all data will be deleted after the partition size is changed.
- The **Advanced** menu is only activated when the computer boots up in the restoration area.
(by pressing the  key during the booting sequence.)

! Since a Complete Restore deletes all user data as well as additionally installed programs, please backup your important data first using the Data Backup function, before running Complete Restore.

4 The computer boots up into restoration mode and the restoration progress message appears. If you click **OK**, the restoration begins. The restoration may take some time, please wait for a moment.

5 When the 'Restart the System' message appears after the restoration is complete, click **OK** to restart the system.

! Make sure that the power cord is connected while the restoration is in process. The first time the computer boots up after a Complete Restore has been performed, the speed of the boot process may be slowed down due to the system optimization process. At this time, do not shut the computer down by force.

Complete Backup/Restore

A **Complete Backup** saves the complete image of the C drive onto another drive or DVD. A **Complete Restore** restores the image file saved by the Complete Backup onto the C drive.

Complete Backup

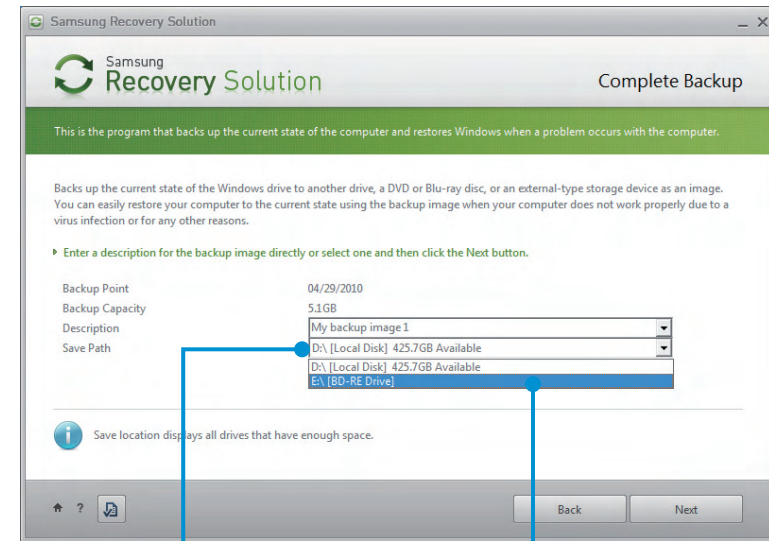
If you perform the Complete Backup function onto a DVD or removable storage device, you can restore your computer even when a problem occurs with the hard disk or when the restoration area is removed.

To create a backup, a removable storage device with at least 15 GB of free space is required.

1 Click **Backup** in the start screen of the Samsung Recovery Solution.

2 Enter a description of the current status of the computer and click **Next**.

After connecting a DVD drive or removable storage device, you can specify the DVD drive or removable storage device as the Save Path.



Select Drive D.

Select the DVD drive.

3 When the option selection item appears, select an option and click **Next**.

The Livelicensing and System Software Backup functions are supported as options for the Complete Backup operation.

- **Livelicensing:** Performs the Complete Backup operation while Windows is running. The backup operation using Livelicensing may slow down if the hard disk drive is accessed frequently by other applications.
- **System Software Backup:** This function backs up the system software on to the DVD after the completion of the Complete Backup operation.

Samsung Recovery Solution (Optional)

4 When the system restarts in Restoration Mode, the **Complete Backup** operation begins. Continue with the backup by following the instructions.



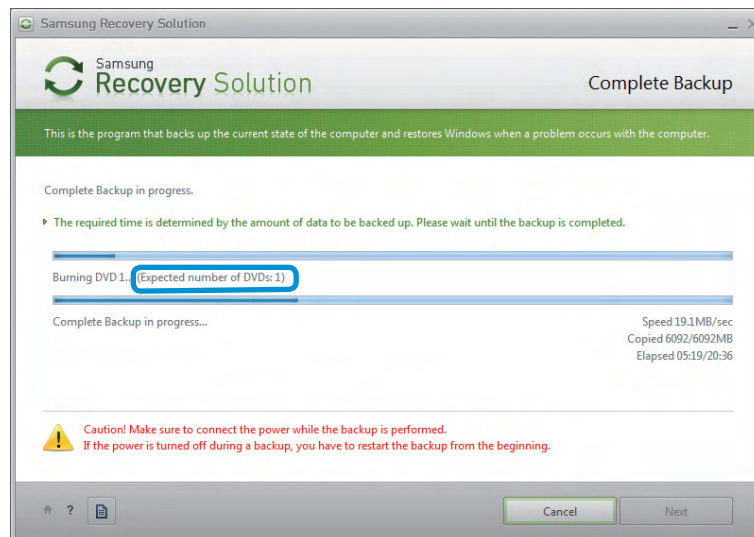
- Samsung Recovery Solution supports the DVD+R, DVD-R, DVD+RW and DVD-RW formats.
- If the Livelmaging option has been selected, the Complete Backup operation begins without the computer being restarted.

5 Continue with the Complete Backup operation by following the instructions.

6 When the 'Restart the System' message appears after the backup is complete, click **OK** to restart the system.



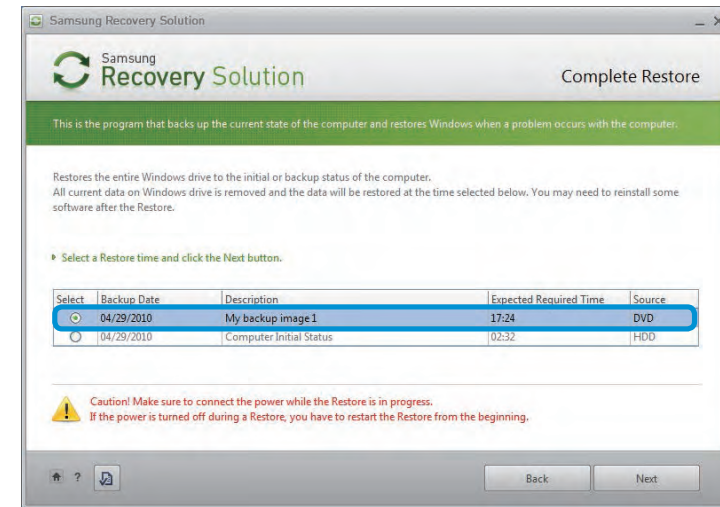
If the Livelmaging option has been selected, the computer is not restarted.



Complete Restore

- 1 – When backing up onto DVD**
Turn the computer on and insert the backup DVD into the DVD drive.
If there are multiple backup DVDs, insert the first DVD.
 - When backing up to a removable storage device**
Connect the removable storage device.
 - When backing up to another drive**
Proceed to Step 2.
- 2** When the Samsung Recovery Solution start screen appears, click **Restore** and then click **Complete Restore**.

- 3** Select a **Complete Backup** restoration point in the restoration point selection screen and click the **Next** button. The system is restarted.



- 4** The restoration progress message appears after the computer boots up in restoration mode. If you click **OK**, the restoration begins.



If multiple DVDs have been used for a Complete Backup, whenever burning a DVD is completed, the “Insert the next DVD” message will appear.


- 5** When the ‘Restart the System’ message appears after the restoration is complete, click **OK** to restart the system. The Complete Restore has been completed.

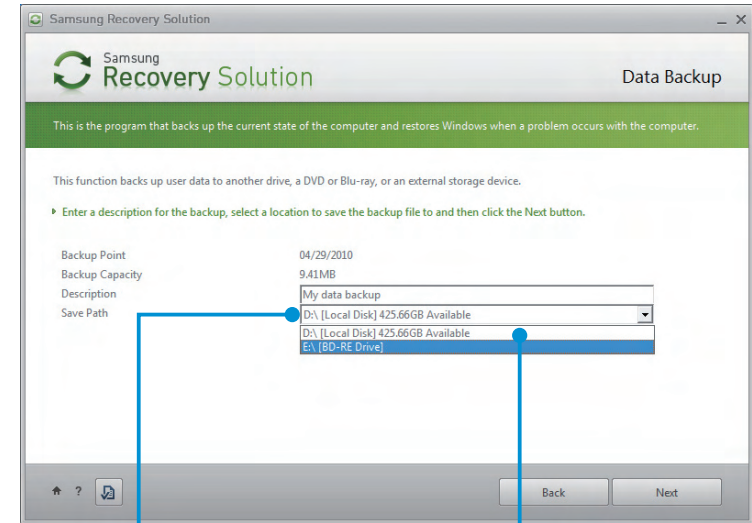
Data Backup/Restore

The **Data Backup** function enables you to backup specific files and folders to another drive, DVD or removable storage device. **Data Restore** enables you to restore data using the data saved by a Data Backup when data is lost. This guide describes the Backup and Restore procedures on the basis of backing up and restoring by using DVD.

Data Backup


- 1 When the Samsung Recovery Solution start screen appears, click **Backup** and then click **Data Backup**.
- 2 In the data selection screen, select either **Basic Selection** or **Select from all**, select a folder or file to be backed up, and then click the **Next** button.
- 3 Enter a description for the backup in the **Description** field so that you can easily recognize it later and specify the **Save Path**.

 If your computer has a DVD-Writer, you can specify the DVD drive as the Save Path.



Select Drive D.

Select the DVD drive.

-  If you have specified a hard disk drive or a removable disk as the Save Path, the **SamsungRecovery\SamsungData** folder is created on the corresponding drive (e.g. D:\) and the data is saved to the folder. Take care to not delete the folder by mistake or on purpose.
- 4 If you click the Next button, the Data Backup begins. If you have selected the DVD drive as the Save Path, the "Insert a blank DVD" message appears. Insert a blank DVD and click the OK button.
- 5 The "Backup is completed" message appears.

Data Restore

- 1 – When backing up onto DVD**
Turn the computer on and insert the backup DVD into the DVD drive.
 - When backing up to a removable storage device**
Connect the removable storage device.
 - When backing up to another drive**
Proceed to Step 2.
- 2** When the initial menu screen appears, click **Restore** and then click **Data Restore**.
 - 3** Select a backup item to be restored in the backup list and click the **Next** button.
 - 4** Select a folder for the restoration and click the **Next** button. Data Restore begins.
 - 5** When Data Restore is completed, check if the data has been restored to the specified folder.

System Software Function

The System Software function is a function that enables you to reinstall device drivers and System Software Programs or back up those programs.



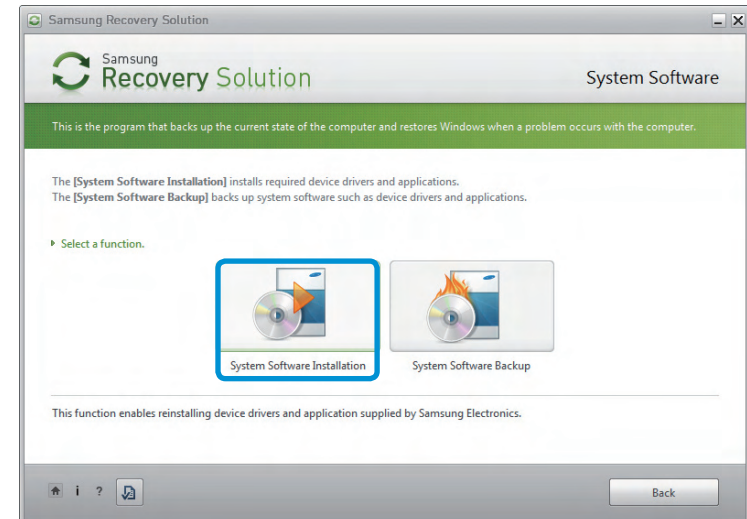
The system software function is supported by **Samsung Recovery Solution version 4 or later**. Therefore, the function may not be supported depending on the version.



The System Software Installation Function only works in Microsoft Windows.

Installing System Software

- 1 When the initial menu screen appears, click **System Software > System Software Installation**.




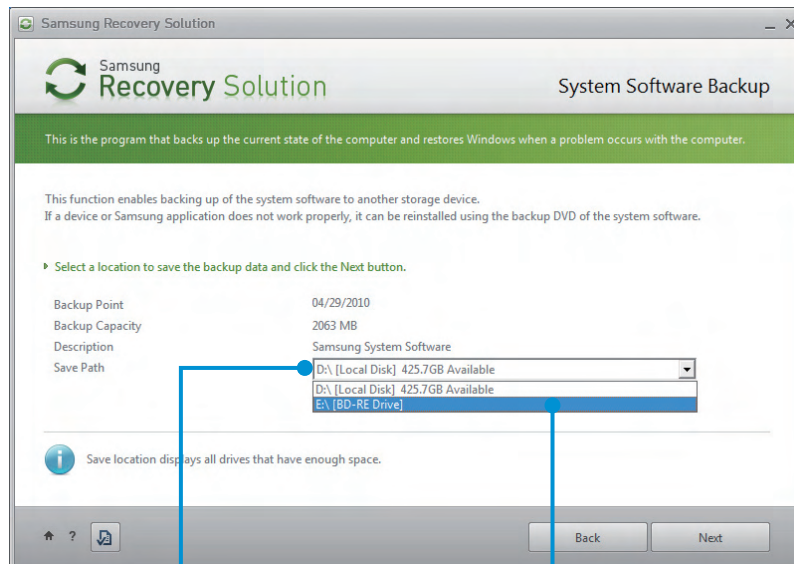
- 2 Move to the **SW Update**.
Using the **SW Update**, you can install device drivers and applications.
- 3 After the installation is complete, the computer will restart.

System Software Backup

1 When the initial menu screen appears, click **System Software** > **System Software Backup**.


2 Specify the Save Path.

 If your computer has a DVD-Writer, you can specify the DVD drive as the Save Path.




Select Drive D.

Select the DVD drive.

 If you have specified a hard disk drive or a removable disk as the Save Path, the **SamsungSoftware** folder is created on the corresponding drive (e.g. D:\) and the system software programs are saved to that folder. Take care to not delete the folder.

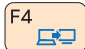
3 If you click the **Next** button, the Software Backup begins. If you have selected the DVD drive as the Save Path, the “Insert a blank DVD” message appears. Insert a blank DVD and click the **OK** button.

4 After the backup, the **System Software Backup is completed** message appears.

- 
- If you want to install the System Software Programs backed up on the drive, run the **SecSWMgrGuide.exe** file in the **SystemSoftware** folder.
 - When installing System Software Programs from the backed-up DVD, insert the DVD and follow the System Software Installation directions.
 - To delete Samsung Recovery Solution, refer to the Help section of the program.

Recovery Solution Representation (Optional)

What is a Recovery Area?

- Samsung computers have an additional partition to recover computers or save backup files.
(Only for models with the Samsung Recovery Solution.)
This partition is called a Recovery Area and it includes a recovery image that comprises of the OS and application programs.
- You can either double-click the Samsung Recovery Solution icon on the desktop or press  while booting the computer to enter the Recovery Area. Then you can back up the present computer state or recover the computer from backed up images.
- For deleting the Recovery Area, you need to use an additional Recovery Area Removal Tool. After deleting the recovery area, you can use the newly created partition for other uses, such as for saving personal data. Be careful that once the recovery area is deleted, the Samsung Recovery Solutions will not work anymore.

The capacity representation of the hard disk drive(HDD) in Windows is different from the product specifications.

- The capacity of the storage device (HDD) of the manufacturer is calculated assuming that 1KB=1,000 Bytes. However, the operating system (Windows) calculates the storage device capacity assuming that 1KB=1,024 Bytes, and therefore the capacity representation of the HDD in Windows is smaller than the actual capacity.
This is due to the difference in capacity calculation and does not mean the installed HDD is different from the product specifications.
- The capacity representation in Windows may be smaller than the actual capacity because some programs occupy a certain area of the HDD outside of Windows.
- For models with Samsung Recovery Solution, the HDD capacity representation in Windows may be smaller than the actual capacity because Samsung Recovery Solution uses a hidden area of about 5~20GB of the HDD to save the recovery image, and that hidden area is not counted towards the total size available to Windows.
The size of Samsung Recovery Solution varies by models because of the different size of applied programs.

Chapter 5. Appendix



Important Safety Information	90
Replacement Parts and Accessories	92
Regulatory Compliance Statements	94
WEEE Symbol Information	107
Samsung Packaging Take-Back Program	108
Product Specifications	109
Glossary	111

Safety Instructions

Your system is designed and tested to meet the latest standards for safety of information technology equipment. However, to ensure safe use of this product, it is important that the safety instructions marked on the product and in the documentation are followed.



Always follow these instructions to help guard against personal injury and damage to your system.

Setting Up your System

- Read and follow all instructions marked on the product and in the documentation before you operate your system. Retain all safety and operating instructions for future use.
- Do not use this product near water or a heat source such as a radiator.
- Set up the system on a stable work surface.
- The product should be operated only with the type of power source indicated on the rating label.
- Ensure that the electrical outlet you are using to power your equipment is easily accessible in case of fire or short circuit.
- If your computer has a voltage selector switch, make sure that the switch is in the proper position for your area.
- Openings in the computer case are provided for ventilation. Do not block or cover these openings. Make sure you provide adequate space, at least 6 inches (15 cm), around the system for ventilation when you set up your work area. Never insert objects of any kind into the computer ventilation openings.
- Ensure that the fan vents on the bottom of the casing are clear at all times. Do not place the computer on a soft surface, doing so will block the bottom vents.
- If you use an extension cord with this system, make sure that the total power rating on the products plugged into the extension cord does not exceed the extension cord power rating.
- For Notebooks with glossy display bezels the user should consider the placement of the Notebook as the bezel may cause disturbing reflections from surrounding light and bright surfaces.


Care During Use


- Do not walk on the power cord or allow anything to rest on it.
- Do not spill anything on the system. The best way to avoid spills is to not eat or drink near your system.
- Some products have a replaceable CMOS battery on the system board. There is a danger of explosion if the CMOS battery is replaced incorrectly. Replace the battery with the same or equivalent type recommended by the manufacturer.
Dispose of batteries according to the manufacturers instructions. If the CMOS battery requires replacement insure that a qualified technician performs the task.
- When the computer is turned off, a small amount of electrical current still flows through the computer.
To avoid electrical shock, always unplug all power cables, remove the battery and modem cables from the wall outlets before cleaning the system.
- Unplug the system from the wall outlet and refer servicing to qualified personnel if:
 - The power cord or plug is damaged.
 - Liquid has been spilled into the system.
 - The system does not operate properly when the operating instructions are followed.
 - The system was dropped or the casing is damaged.
 - The system performance changes.

The Instruction On Safety Operation of NotePC


1. When installing and operating devices please refer to safety requirements in the user manual.
2. Devices can be used only with the equipment specified in the technical specifications of the devices.
3. If any smell of burning or smoke is detected from the computer the unit should be switched off and battery removed. The unit should be checked by a qualified technician before reuse.
4. Service and repair of devices should be carried out by authorized service centers.
5. Do not allow your portable computer to operate with the base resting directly on exposed skin for extended periods of time. The surface temperature of the base will rise during normal operation (particularly when AC Power is present). Allowing sustained contact with exposed skin can cause discomfort or eventually a burn.

Use only replacement parts and accessories recommended by manufacturer.

 To reduce the risk of fire, use only No. 26 AWG or larger telecommunications line cord.


 Do not use this product in areas classified as hazardous. Such areas include patient care areas of medical and dental facilities, oxygen rich environments, or industrial areas.

Battery Disposal

 Do not put rechargeable batteries or products powered by non-removable rechargeable batteries in the garbage.


Contact the Samsung Helpline for information on how to dispose of batteries that you cannot use or recharge any longer.

Follow all local regulations when disposing of old batteries.

 THERE IS A RISK OF EXPLOSION IF BATTERY IS REPLACED BY AN INCORRECT TYPE.
DISPOSE OF USED BATTERIES ACCORDING TO THE INSTRUCTIONS.

Laser Safety

All systems equipped with CD or DVD drives comply with the appropriate safety standards, including IEC 60825-1. The laser devices in these components are classified as “Class 1 Laser Products” under a US Department of Health and Human Services (DHHS) Radiation Performance Standard. Should the unit ever need servicing, contact an authorized service location.

-  • **Laser Safety Note:**
- Use of controls or adjustments or performance of procedures other than those specified in this manual may result in hazardous radiation exposure. To prevent exposure to laser beams, do not try to open the enclosure of a CD or DVD drive.
 - Class 1M laser radiation when operating part is open. Do not view directly with optical instruments.
 - Class 3B invisible laser radiation when open. Avoid exposure to the beam.

Connect and Disconnect the AC adapter

The socket-outlet shall be installed near the equipment and shall be easily accessible.

Do not unplug the power cord by pulling the cable only.

Power Cord Requirements

The power cord set (wall plug, cable and AC adapter plug) you received with your computer meets the requirements for use in the country where you purchased your equipment.

Power cord sets for use in other countries must meet the requirements of the country where you use the computer. For more information on power cord set requirements, contact your authorized dealer, reseller, or service provider.

General Requirements

The requirements listed below are applicable to all countries:

- All power cord sets must be approved by an acceptable accredited agency responsible for evaluation in the country where the power cord set will be used.
- The power cord set must have a minimum current capacity of 7 A and a nominal voltage rating of 125 or 250 volts AC, as required by each country's power system. (USA ONLY)
- The appliance coupler must meet the mechanical configuration of an EN 60 320/IEC 320 Standard Sheet C7 (or C5) connector, for mating with appliance inlet on the computer.

Wireless Guidance

(If fitted with 2.4G band or 5G band)

Low power, Radio LAN type devices (radio frequency (RF) wireless communication devices), operating in the 2.4GHz/5GHz Band, may be present (embedded) in your notebook system. The following section is a general overview of considerations while operating a wireless device.

Additional limitations, cautions, and concerns for specific countries are listed in the specific country sections (or country group sections). The wireless devices in your system are only qualified for use in the countries identified by the Radio Approval Marks on the system rating label. If the country you will be using the wireless device in, is not listed, please contact your local Radio Approval agency for requirements. Wireless devices are closely regulated and use may not be allowed.

The RF field strength of the wireless device or devices that may be embedded in your notebook are well below all international RF exposure limits as known at this time. Because the wireless devices (which may be embedded into your notebook) emit less energy than is allowed in radio frequency safety standards and recommendations, manufacturer believes these devices are safe using. Regardless of the power levels, care should be taken to minimize human contact during normal operation.

Some circumstances require restrictions on wireless devices. Examples of common restrictions are listed on the next page:



- Radio frequency wireless communication can interfere with equipment on commercial aircraft. Current aviation regulations require wireless devices to be turned off while traveling in an airplane. 802.11ABGN (also known as wireless Ethernet or Wifi) and Bluetooth communication devices are examples of devices that provide wireless communication.
- In environments where the risk of interference to other devices or services is harmful or perceived as harmful, the option to use a wireless device may be restricted or eliminated. Airports, Hospitals, and Oxygen or flammable gas laden atmospheres are limited examples where use of wireless devices may be restricted or eliminated. When in environments where you are uncertain of the sanction to use wireless devices, ask the applicable authority for authorization prior to use or turning on the wireless device.
- Every country has different restrictions on the use of wireless devices. Since your system is equipped with a wireless device, when traveling between countries with your system, check with the local Radio Approval authorities prior to any move or trip for any restrictions on the use of a wireless device in the destination country.
- If your system came equipped with an internal embedded wireless device, do not operate the wireless device unless all covers and shields are in place and the system is fully assembled.

- ! Wireless devices are not user serviceable. Do not modify them in any way. Modification to a wireless device will void the authorization to use it. Please contact manufacturer for service.
- Only use drivers approved for the country in which the device will be used. See the manufacturer System Restoration Kit, or contact manufacturer Technical Support for additional information.

United States of America

USA and Canada Safety Requirements and Notices

Do not touch or move antenna while the unit is transmitting or receiving.

Do not hold any component containing the radio such that the antenna is very close or touching any exposed parts of the body, especially the face or eyes, while transmitting.

Do not operate the radio or attempt to transmit data unless the antenna is connected; if not, the radio may be damaged.

Use in specific environments:

The use of wireless devices in hazardous locations is limited by the constraints posed by the safety directors of such environments.

The use of wireless devices on airplanes is governed by the Federal Aviation Administration (FAA).

The use of wireless devices in hospitals is restricted to the limits set forth by each hospital.

! Explosive Device Proximity Warning


Do not operate a portable transmitter (such as a wireless network device) near unshielded blasting caps or in an explosive environment unless the device has been modified to be qualified for such use.

Use On Aircraft Caution

Regulations of the FCC and FAA prohibit airborne operation of radio-frequency wireless devices because their signals could interfere with critical aircraft instruments.


Other Wireless Devices

Safety Notices for Other Devices in the Wireless Network: Refer to the documentation supplied with wireless Ethernet adapters or other devices in the wireless network.

 The Part 15 radio device operates on a non-interference basis with other devices operating at this frequency. Any changes or modification to said product not expressly approved by Intel could void the user's authority to operate this device.

Unintentional Emitter per FCC Part 15

This device complies with Part 15 of the FCC Rules. Operation is subject to the following two conditions:(1) this device may not cause harmful interference, and (2) this device must accept any interference received, including interference that may cause undesired operation.

 This equipment has been tested and found to comply with the limits for a Class B digital device pursuant to Part 15 of the FCC Rules. These limits are designed to provide reasonable protection against harmful interference in a residential installation. This equipment generates, uses, and can radiate radio frequency energy. If not installed and used in accordance with the instructions, it may cause harmful interference. If this equipment does cause harmful interference to radio or television reception, which can be determined by turning the equipment off and on, the user is encouraged to try to correct the interference by one or more of the following measures:

- Reorient or relocate the receiving antenna.
- Increase the separation between the equipment and receiver.
- Connect the equipment into an outlet on a circuit different from that to which the receiver is connected.
- Consult the dealer or an experienced radio/TV technician for help.

If necessary, the user should consult the dealer or an experienced radio/television technician for additional suggestions. The user may find the following booklet helpful: "Something About Interference."

This is available at FCC local regional offices. Our company is not responsible for any radio or television interference caused by unauthorized modifications of this equipment or the substitution or attachment of connecting cables and equipment other than those specified by our company. The correction will be the responsibility of the user. Use only shielded data cables with this system.

Intentional emitter per FCC Part 15

(If fitted with 2.4G band or 5G band)

Low power, Radio LAN type devices (radio frequency (RF) wireless communication devices), operating in the 2.4GHz/5GHz Band, may be present (embedded) in your notebook system. This section is only applicable if these devices are present. Refer to the system label to verify the presence of wireless devices.

Wireless devices that may be in your system are only qualified for use in the United States of America if an FCC ID number is on the system label.

This device is restricted to indoor use due to its operation in the 5.15 to 5.25 GHz frequency range. FCC requires this product to be used indoors for the frequency range 5.15 to 5.25 GHz to reduce the potential for harmful interference to co-channel Mobile Satellite systems. High power radars are allocated as primary users of the 5.25 to 5.35 GHz and 5.65 to 5.85 GHz bands. These radar stations can cause interference with and /or damage this device.

Operation of this device is subject to the following two conditions: (1) This device may not cause harmful interference, and (2) this device must accept any interference received, including interference that may cause undesired operation of the device.



Wireless devices are not user serviceable. Do not modify them in any way.

Modification to a wireless device will void the authorization to use it. Contact manufacturer for service.

Health and safety information

Exposure to Radio Frequency (RF) Signals

Certification Information

This product can contain an embedded radio transmitter and receiver. It is designed and manufactured not to exceed the exposure limits for radio frequency (RF) energy set by the Federal Communications Commission (FCC) of the U.S. government. These FCC exposure limits are derived from the recommendations of two expert organizations, the National Council on Radiation Protection and Measurement (NCRP) and the Institute of Electrical and Electronics Engineers (IEEE). In both cases, the recommendations were developed by scientific and engineering experts drawn from industry, government, and academia after extensive reviews of the scientific literature related to the biological effects of RF energy.

Before a new model is available for sale to the public, it must be certified to the FCC that it does not exceed the exposure limit established by the FCC. Evaluation per each model is performed in positions and locations (e.g. at the bottom on the body) as required by the FCC.

For body worn operation, this model meets the FCC RF exposure guidelines when used with Samsung accessory designated for this product. Non-compliance with the above restrictions may result in violation of FCC RF exposure guidelines.

RF exposure or SAR information can viewed on-line at <http://www.fcc.gov/oet/ea/fccid/>. This site uses this product FCC ID number on the outside of the product. Sometimes it may be necessary to remove the battery pack to find number. Once you have the FCC ID number for a particular product, follow the instructions on the website and it should provide RF exposure information or values for typical or maximum SAR for particular product.

For corresponding model only

The Specific Absorption Rate (SAR) is a measure of the rate of absorption of RF energy by the human body expressed in units of watts per kilogram (W/kg). The FCC wireless devices to comply with a safety limit of 1.6 watts per kilogram (1.6W/kg).

SAR level of this device while operating can be well below the maximum value. This is because the device is designed to operate at multiple power levels so as to use only the power required to reach the network. In general, the closer you are to a wireless base station antenna, the lower the power output.

Canada

Unintentional Emitter per ICES-003

This digital apparatus does not exceed the Class B limits for radio noise emissions from digital apparatus as set out in the radio interference regulations of Industry Canada.

Intentional Emitter per RSS 210

This device complies with RSS 210 of Industry Canada. Operation is subject to the following two conditions: (1) this device may not cause interference, and (2) this device must accept any interference, including interference that may cause undesired operation of this device.”

The term “IC” before the equipment certification number only signifies that the Industry Canada technical specifications were met. To reduce potential radio interference to other users, the antenna type and its gain should be so chosen that the equivalent isotropically radiated power (EIRP) is not more than that required for successful communication. To prevent radio interference to the licensed service, this device is intended to be operated indoors and away from windows to provide maximum shielding. Equipment (or its transmit antenna) that is installed outdoors is subject to licensing.

(If fitted with 2.4G band or 5G band)

Low power, Radio LAN type devices (radio frequency (RF) wireless communication devices), operating in the 2.4GHz/5GHz Band, may be present (embedded) in your notebook system. This section is only applicable if these devices are present. Refer to the system label to verify the presence of wireless devices.

Wireless devices that may be in your system are only qualified for use in Canada if an Industry Canada ID number is on the system label.


When using IEEE 802.11a wireless LAN, this product is restricted to indoor use due to its operation in the 5.15- to 5.25-GHz frequency range. Industry Canada requires this product to be used indoors for the frequency range of 5.15 GHz to 5.25 GHz to reduce the potential for harmful interference to co-channel mobile satellite systems. High power radar is allocated as the primary user of the 5.25- to 5.35-GHz and 5.65 to 5.85-GHz bands. These radar stations can cause interference with and/or damage to this device.


The maximum allowed antenna gain for use with this device is 6dBi in order to comply with the E.I.R.P limit for the 5.25- to 5.35 and 5.725 to 5.85 GHz frequency range in point-to-point operation.

The power output of the wireless device (or devices), which may be embedded in your notebook, is well below the RF exposure limits as set by Industry Canada.

Operation of this device is subject to the following two conditions:

(1) This device may not cause harmful interference, and (2) this device must accept any interference received, including interference that may cause undesired operation of the device.

 To prevent radio interference to licensed service, this device is intended to be operated indoors and away from windows to provide maximum shielding. Equipment (or its transmit antenna) that is installed outdoors is subject to licensing.

 Wireless devices are not user serviceable. Do not modify them in any way. Modification to a wireless device will void the authorization to use it. Contact manufacturer for service.

Brazil

Este produto esta homologado pela ANATEL, de acordo com os procedimentos regulamentados pela Resolucao 242/2000, e atende aos requisitos tecnicos aplicados.

Este equipamento opera em caráter secundário, isto é, não tem direito a proteção contra interferência prejudicial, mesmo de estações do mesmo tipo, e não pode causar interferência a sistemas operando em caráter primário.

European Union

European Union CE Marking and Compliance Notices

Products intended for sale within the European Union are marked with the Conformité Européene (CE) Marking, which indicates compliance with the applicable Directives and European standards and amendments identified below. This equipment also carries the Class 2 identifier.

The following information is only applicable to systems labeled with the CE mark **CE**.

European Directives **CE**

This Information Technology Equipment has been tested and found to comply with the following European directives:

- EMC Directive 2004/108/EC
- Low Voltage Directive 2006/95/EC
- R&TTE Directive 1999/5/EC

Samsung Electronics (UK) Ltd, Euro QA Lab.

Blackbushe Business Park Saxony Way, Yateley,
Hampshire GU46 6GG United Kingdom

European Radio Approval Information (for products fitted with EU-approved radio devices)

This Product is a Notebook computer; low power, Radio LAN type devices (radio frequency (RF) wireless communication devices), operating in the 2.4GHz/5GHz band, may be present (embedded) in your notebook system which is intended for home or office use. This section is only applicable if these devices are present. Refer to the system label to verify the presence of wireless devices.



Wireless devices that may be in your system are only qualified for use in the European Union or associated areas if a CE mark **CE** with a Notified Body Registration Number and the Alert Symbol is on the system label.







The power output of the wireless device or devices that may be embedded in you notebook is well below the RF exposure limits as set by the European Commission through the R&TTE directive.








The low band 5.15 - 5.35 GHz is for indoor use only.












See 802.11b and 802.11g restrictions for specific countries or regions within countries under the heading "European Economic Area Restrictions" below.

EU R&TTE Compliance Statements

 Česky [Czech]	Samsung tímto prohlašuje, že tento Notebook PC je ve shodě se základními požadavky a dalšími příslušnými ustanoveními směrnice 1999/5/ES.
 Dansk [Danish]	Undertegnede Samsung erklærer herved, at følgende udstyr Notebook PC overholder de væsentlige krav og øvrige relevante krav i direktiv 1999/5/EF.
 Deutsch [German]	Hiermit erklärt Samsung, dass sich das Gerät Notebook PC in Übereinstimmung mit den grundlegenden Anforderungen und den übrigen einschlägigen Bestimmungen der Richtlinie 1999/5/EG befindet.
 Eesti [Estonian]	Käesolevaga kinnitab Samsung seadme Notebook PC vastavust direktiivi 1999/5/EÜ põhinõuetele ja nimetatud direktiivist tulenevatele teistele asjakohastele sätetele.
 English	Hereby, Samsung, declares that this Notebook PC is in compliance with the essential requirements and other relevant provisions of Directive 1999/5/EC.
 Español [Spanish]	Por medio de la presente Samsung declara que el Notebook PC cumple con los requisitos esenciales y cualesquiera otras disposiciones aplicables o exigibles de la Directiva 1999/5/CE.

 Ελληνική [Greek]	ΜΕ ΤΗΝ ΠΑΡΟΥΣΑ Samsung ΔΗΛΩΝΕΙ ΟΤΙ Notebook PC ΣΥΜΜΟΡΦΩΝΕΤΑΙ ΠΡΟΣ ΤΙΣ ΟΥΣΙΩΔΕΙΣ ΑΠΑΙΤΗΣΕΙΣ ΚΑΙ ΤΙΣ ΛΟΙΠΕΣ ΣΧΕΤΙΚΕΣ ΔΙΑΤΑΞΕΙΣ ΤΗΣ ΟΔΗΓΙΑΣ 1999/5/ΕΚ.
 Français [French]	Par la présente Samsung déclare que l'appareil Notebook PC est conforme aux exigences essentielles et aux autres dispositions pertinentes de la directive 1999/5/CE.
 Italiano [Italian]	Con la presente Samsung dichiara che questo Notebook PC è conforme ai requisiti essenziali ed alle altre disposizioni pertinenti stabilite dalla direttiva 1999/5/CE.
 Latviski [Latvian]	Ar šo Samsung deklarē, ka Notebook PC atbilst Direktīvas 1999/5/EK būtiskajām prasībām un citiem ar to saistītajiem noteikumiem.
 Lietuvių [Lithuanian]	Šiuo Samsung deklaruoja, kad šis Notebook PC atitinka esminius reikalavimus ir kitas 1999/5/EB Direktyvos nuostatas.
 Nederlands [Dutch]	Hierbij verklaart Samsung dat het toestel Notebook PC in overeenstemming is met de essentiële eisen en de andere relevante bepalingen van richtlijn 1999/5/EG.
 Malti [Maltese]	Hawnhekk, Samsung, jiddikjara li dan Notebook PC jikkonforma mal-ħtiājiet essenzjali u ma provvedimenti oħrajn rilevanti li hemm fid-Dirrettiva 1999/5/EC.

	Magyar [Hungarian]	Alulírott, Samsung nyilatkozom, hogy a Notebook PC megfelel a vonatkozó alapvető követelményeknek és az 1999/5/EC irányelv egyéb előírásainak.
	Polski [Polish]	Niniejszym Samsung oświadcza, że Notebook PC jest zgodny z zasadniczymi wymogami oraz pozostałymi stosownymi postanowieniami Dyrektywy 1999/5/EC.
	Português [Portuguese]	Samsung declara que este Notebook PC está conforme com os requisitos essenciais e outras disposições da Directiva 1999/5/CE.
	Slovensko [Slovenian]	Samsung izjavlja, da je ta Notebook PC v skladu z bistvenimi zahtevami in ostalimi relevantnimi določili direktive 1999/5/ES.
	Slovensky [Slovak]	Samsung týmto vyhlasuje, že Notebook PC spĺňa základné požiadavky a všetky príslušné ustanovenia Smernice 1999/5/ES.
	Suomi [Finnish]	Samsung vakuuttaa täten että Notebook PC tyyppinen laite on direktiivin 1999/5/EY oleellisten vaatimusten ja sitä koskevien direktiivin muiden ehtojen mukainen.
	Svenska [Swedish]	Härmed intygar Samsung att denna Notebook PC står i överensstämmelse med de väsentliga egenskapskrav och övriga relevanta bestämmelser som framgår av direktiv 1999/5/EG.

	Íslenska [Icelandic]	Hér með lýsir Samsung yfir því að Notebook PC er í samræmi við grunnkröfur og aðrar kröfur, sem gerðar eru í tilskipun 1999/5/EC.
	Norsk [Norwegian]	Samsung erklærer herved at utstyret Notebook PC er i samsvar med de grunnleggende krav og øvrige relevante krav i direktiv 1999/5/EF.
	Türkiye [Türkçe]	Bu belge ile, Samsung bu Notebook PC'nin 1999/5/EC Yönetmeliğinin temel gerekliliklerine ve ilgili hükümlerine uygun olduğunu beyan eder.

To view the EU Declaration of Conformity for this product (in English only), go to: <http://www.samsung.com/uk/support/main/supportMain.do> or <http://www.samsung.com/uk/support> then search the model number of the product.

If the Declaration of Conformity for the model you are interested in is not available on our web-site, please contact your distributor or below address.

doc.eu@samsung.com

Manufacturer Information

Samsung Electronics Co., Ltd.

416, Maetan-3Dong, Yeongtong-Gu, Suwon-City, Gyeonggi-Do, 443-742, Korea

Samsung Electronics Suzhou Computer Co., Ltd.

No. 198, Fangzhou Road, Suzhou Industrial Park, Jiangsu Province, 215021, China

Tel: +86-0512-6253-8988

Samsung Electronics Vietnam Co., Ltd.

Yen Phong 1, I.P Yen Trung Commune, Yen Phong Dist., Bac Ninh Province, Vietnam

For the web or the phone number of Samsung Service Centre, see the Warranty or contact the retailer where you purchased your product.

European Economic Area Restrictions

Local Restriction of 802.11b/802.11g Radio Usage

[Note to integrator: The following statements on local restrictions must be published in all end-user documentation provided with the system or product incorporating the wireless product.]



Due to the fact that the frequencies used by 802.11b/802.11g wireless LAN devices may not yet be harmonized in all countries, 802.11b/802.11g products are designed for use only in specific countries or regions, and are not allowed to be operated in countries or regions other than those of designated use.

As a user of these products, you are responsible for ensuring that the products are used only in the countries or regions for which they were intended and for verifying that they are configured with the correct selection of frequency and channel for the country or region of use. Any deviation from permissible settings and restrictions in the country or region of use could be an infringement of local law and may be punished as such.

The European variant is intended for use throughout the European Economic Area. However, authorization for use is further restricted in particular countries or regions within countries, as follows:

General

European standards dictate maximum radiated transmit power of 100 mW effective isotropic radiated power (EIRP) and the frequency range 2400 – 2483.5 MHz.

The low band 5.15 - 5.35 GHz is for indoor use only.

Belgium

Dans le cas d'une utilisation privée, à l'extérieur d'un bâtiment, au-dessus d'un espace public, aucun enregistrement n'est nécessaire pour une distance de moins de 300m. Pour une distance supérieure à 300m un enregistrement auprès de l'IBPT est requise. Pour une utilisation publique à l'extérieur de bâtiments, une licence de l'IBPT est requise. Pour les enregistrements et licences, veuillez contacter l'IBPT.

Pour les autres langues, reportez-vous aux modes d'emploi correspondants.

France

The low band 5.15 - 5.35 GHz is for indoor use only.

RTC CAUTION

CAUTION : Danger of explosion if battery is incorrectly replaced. Replace only with the same or equivalent type recommended by the manufacturer. Discard used batteries according to the Manufacturer's instruction.

Attention: Danger d'explosion si les piles sont mal placées. Remplacez les piles usagées uniquement par des piles de type identique ou équivalent recommandées par le fabricant. Otez les piles usagées selon les instructions du fabricant.

RF Exposure

General Statement on RF energy

Your Notebook PC contains a transmitter and a receiver. When it is ON, it receives and transmits RF energy. When you communicate with your Notebook PC, the system handling your connection controls the power level at which your Notebook PC transmits.

(!) Body worn operation

Important safety information regarding radiofrequency radiation (RF) exposure

To ensure compliance with RF exposure guidelines the Notebook PC must be used with a minimum of 20.0 cm antenna separation from the body. The transmission antenna of Notebook PC is located in the top of the LCD

Failure to observe these instructions could result in your RF exposure exceeding the relevant guideline limits.

Limiting exposure to radio frequency (RF) fields

For individuals concerned about limiting their exposure to RF fields, the World Health Organisation (WHO) provides the following advice:

Precautionary measures: Present scientific information does not indicate the need for any special precautions for the use of the Notebook PC. If individuals are concerned, they might choose to limit their own or their children's RF exposure by limiting the length of connections, or using 'hands-free' devices to keep your Notebook PC away from the head and body.

Further information on this subject can be obtained from the WHO home page <http://www.who.int/pehemf>

WHO Fact sheet 193: June 2000.



Correct disposal of this product (Waste Electrical & Electronic Equipment)

(Applicable in countries with separate collection systems)

This marking on the product, accessories or literature indicates that the product and its electronic accessories (e.g. charger, headset, USB cable) should not be disposed of with other household waste at the end of their working life.

To prevent possible harm to the environment or human health from uncontrolled waste disposal, please separate these items from other types of waste and recycle them responsibly to promote the sustainable reuse of material resources.

Household users should contact either the retailer where they purchased this product, or their local government office, for details of where and how they can take these items for environmentally safe recycling.

Business users should contact their supplier and check the terms and conditions of the purchase contract. This product and its electronic accessories should not be mixed with other commercial wastes for disposal.

India Only

For more information on safe disposal and recycling visit our website www.samsung.com/in or contact our Helpline numbers - 18002668282, 180030008282.

This product is RoHS compliant.



Correct disposal of batteries in this product

(Applicable in countries with separate collection systems)

This marking on the battery, manual or packaging indicates that the batteries in this product should not be disposed of with other household waste at the end of their working life. Where marked, the chemical symbols Hg, Cd or Pb indicate that the battery contains mercury, cadmium or lead above the reference levels in EC Directive 2006/66. If batteries are not properly disposed of, these substances can cause harm to human health or the environment.

To protect natural resources and to promote material re-use, please separate batteries from other types of waste and recycle them through your local, free battery return system.

USA ONLY



This Perchlorate warning applies only to primary CR (Manganese Dioxide) Lithium coin cells in the product sold or distributed ONLY in California USA.

"Perchlorate Material- special handling may apply, See www.dtsc.ca.gov/hazardouswaste/perchlorate."

Dispose unwanted electronics through an approved recycler.

To find the nearest recycling location, go to our website: www.samsung.com/recyclingdirect Or call, (877) 278-0799

For battery recycling go to call2recycle.org; or call 1-877-723-1297

Warning : This product contains chemicals known to the state of California to cause cancer and reproductive toxicity.

Samsung Packaging Take-Back Program

In partnering with select recyclers, Samsung offers packaging take-back at no cost to you.

Simply call the following number for the locations nearest you.

CRT Processing, LLC

(877) 278-0799

Kathy Severson – Logistics contact

Dispose unwanted electronics through an approved recycler.

To find the nearest recycling location, go to our website:

www.samsung.com/recyclingdirect Or call, (877) 278-0799

The system specifications may differ depending on the derived models.

For detailed system specifications, refer to the product catalogue.

CPU (Optional)	Intel Pentium Processor Intel® Core™ i3 / i5 / i7 Processor
Main Memory (Optional)	DDR3L
Main Chipset (Optional)	Intel HM86
Storage Device (Optional)	7mmH SATA HDD 9.5mmH SATA HDD SSD
Graphics (Optional)	Intel® HD Graphics Intel® HD Graphics 4600 NVIDIA GeForce 820M (Optimus)
Operating Environment	Temperature: -5~40°C for storage, 10~32°C when operating Humidity: 5~90% for storage, 20~80% when operating

AC/DC Rating (Optional)

Input: 100-240VAC, 50 ~ 60Hz,
Output: 19VDC 3.16A, 19VDC 4.74A

PC Rating (Optional)

19VDC 3.16A (60W), 19VDC 4.74A (90W)



- Optional components may not be provided or different components may be provided depending on the computer model.
- Only DDR3L is supported.
- The system specifications are subject to change without notice.
- The Storage device capacity of a computer in which Samsung Recovery Solution is installed, is represented as smaller than the product specification.
- The amount of memory that Windows can use may be smaller than the actual amount of memory available.

Registered Trademarks

Samsung is a registered trademark of Samsung Co., Ltd.

Intel, Core™ i3 / i5 are registered trademarks of the Intel Corporation.

Microsoft, MS-DOS, and Windows are registered trademarks of the Microsoft Corporation.

The terms HDMI and HDMI High-Definition Multimedia Interface, and the HDMI Logo are trademarks or registered trademarks of HDMI Licensing LLC in the United States and other countries.

All other product or company names mentioned herein are registered trademarks of their respective companies.

ENERGY STAR® Partner



As an ENERGY STAR® Partner, SAMSUNG has determined that this product meets the ENERGY STAR® guidelines for energy efficiency.

- The ENERGY STAR Program has reduced greenhouse gas emissions and saved energy through voluntary labeling
- Power management setting of this product have been enabled by default, and have various timing settings from 1 minute to 5hours.
- The product can wake with a button press on the chassis from sleep mode.

HDMI



The Glossary lists the terminologies used in this User Manual. For terminologies other than these, look in Windows Help.

Backup

A way to save the current data to restore it later if necessary. A backup is a way to restore computer data when the data or computer is damaged.

Chargeable USB

This program enables supplying power to a specific USB port when the system is in power saving mode, hibernation mode or off.

Client

This refers to a computer that uses a shared network resource provided by a server.

DDR SDRAM

(Double Data Rate Synchronous Dynamic Random Access Memory)

DRAM is a memory type whose cells consist of a capacitor and transistor manufactured at a low price. SDRAM is a memory type whose performance has been improved by synchronizing the clock with the external CPU clock. DDR SDRAM is a memory type whose performance has been improved by doubling the operating speed of the SDRAM and is widely used nowadays. This computer uses DDR SDRAM.

Device Manager

An administrative tool used to manage computer devices. You can add or remove hardware or update a device driver using the Device Manager.

DHCP (Dynamic Host Configuration Protocol)

This refers to automatically allocating IP addresses to the users on the network by the network administrators.

Direct X

An application interface developed to enable Windows application programs to access hardware devices at a very high speed. Since the operating speed of graphics, memory and sound cards must be very fast to provide high quality video and sound for games, Direct X enables faster control and interaction between applications and hardware devices. By using Direct X, the multimedia performance of Windows has been hugely improved.

Driver

Software that interacts between the hardware and the operating system. An operating system knows the hardware information and controls the hardware. In general, a driver is supplied with the corresponding hardware device.

D-sub (D-subminiature)

This is the cable connecting a general CRT monitor and the computer. Analog video is output through this cable.

DVD (Digital Versatile Disk)

DVD was developed to replace CD (compact disk). Although the shape and size of the disc are the same as that of a CD, the capacity of a DVD is at least 4.7GB while the capacity of a CD is 600MB. DVD video is digital unlike VHS (analog) video and supports MPEG2 compression and digital audio. To play a DVD, a DVD drive is required.

Firewall

A security system used to protect an internal network or intranet from external networks through an authentication procedure.

HDMI

This is a digital video / audio interface specification that transmits video and audio signals over a single cable.

Hibernation Mode

A power mode that saves all data in memory to the hard disk and turns the CPU and hard disk off. When canceling Hibernation Mode, all application programs that were running are restored to their last state.

Icon

This refers to a small image that represents a file that users can use.

IEEE802.XX

This is a set of specifications developed by the 802 committee of IEEE for the LAN connection method called XX.

LAN (Local Area Network)

A communications network connecting computers, printers and other devices within a local area such as within a building. A LAN enables all connected devices to interact with other devices on the network. The current LAN uses the Ethernet media access control method developed in the early 1980s. To connect to an Ethernet, a network card called a LAN card, Ethernet card or network interface card is required. To exchange data between computers, a protocol is required besides the hardware equipment. Windows uses TCP/IP as the default protocol.

LCD (Liquid Crystal Display)

There are Passive Matrix and Active Matrix LCD types. This computer uses the Active Matrix type LCD called a TFT LCD. Since an LCD is implemented by transistors instead of a cathode-ray tube unlike a CRT, its size can be slim. And because it does not blink, it reduces eye strain.

Network

A group of computers and devices, such as printers and scanners, connected by a communications link. A network can be either small or large and can be connected permanently through cables or temporarily through telephone lines or wireless links. The biggest network is the Internet, a worldwide network.

Network Administrator

A user who plans, configures and manages network operations. Sometimes, a network administrator is called a system administrator.

Notification Area

This refers to the right area of the Taskbar including program icons such as the volume control, the power options and the time.

Partition

This refers to the act or practice of dividing the storage space of a hard disk drive into separate data areas known as partitions. If a 100GB hard disk drive is partitioned into 2 x 50GB partitions, the hard disk drive can be used as if there are 2 hard disk drives.

Protocol

A protocol is a set of rules used by computers to communicate with each other across a network. A protocol is a convention or standard that controls or enables the connection, communication, and data transfer between computing endpoints. It defines the data transmission procedures and the transmission medium for more efficient network functions.

Quick Launch

This refers to a toolbar that can be configured so that you can launch a program such as Internet Explorer or display the Windows Desktop with one click. You can add any icon to the quick launch area of the Taskbar and launch frequently used program by clicking that icon.

SDHC (Secure Digital High Capacity) card

This is the extension of the SD card that supports over 2GB bytes.

SDXC (Secure Digital eXtended Capacity)

SDXC provides a higher capacity and speed than the SDHC specification. This is a new SD card specification that can theoretically implement a memory capacity up to 2TB.

For high capacity implementation, apply the exFAT specifications.

Server

In general, a server refers to a computer that provides shared resources for network users.

Share

This refers to setting a resource of a computer such as a folder or printer so that other users can also use it.

Shared Folder

A folder that can be used by other users on the network.

Sleep Mode

A power mode that enables computers to save power consumption when they are not being used. When a computer is in Sleep Mode, the data on the computer memory is not saved to the hard disk. If the power is turned off, the data in memory will be lost.

System File

System Files refer to files that are read and used by the Windows operating system. In general, system files must not be deleted or moved.

TCP/IPv4

This is a 4 byte (32 bit) address system separated into each byte (8 bits) by a dot and each byte is represented as a decimal number.

USB (Universal Serial Bus)

This refers to a serial interface standard developed to replace the conventional interface standards such as Serial and PS/2.

The data transmission specifications are one of the interface standards used to connect a computer to peripheral devices. These specifications include USB 1.0, 1.1, 2.0 and 3.0.

It is appropriate to support peripheral devices that require high data rates such as an AV device, secondary HDD or CD-RW. The higher the version (e.g. USB 3.0), the higher the data rate provided.

Windows Media Player

A multimedia program included with Windows. Using this program, you can play a media file, create an audio CD, listen to a radio broadcast, search and manage media files, and copy files to a portable device, etc.