

SAMSUNG

# User Guide





## Chapter 1. Getting Started

- 4 Before You Start
- 7 Safety Precautions
- 21 Proper Posture During Computer Use
- 24 Overview
- 27 Turning the Computer On and Off



## Chapter 2. Using the Computer

- 30 Keyboard
- 33 Touchpad
- 37 Multi Card Slot (Optional)
- 40 Connecting an External Display Device
- 44 Connecting an External Digital Device
- 45 Adjusting the Volume
- 46 Wired Network
- 49 Wireless Network (Optional)
- 52 Using the TPM Security Device (Optional)



## Chapter 3. Settings and Upgrade

- 62 LCD Brightness Control
- 63 Easy Settings (Optional)
- 64 BIOS Setup
- 66 Setting a Boot Password
- 69 Changing the Boot Priority
- 70 Upgrading Memory
- 72 Battery



## Chapter 4. Backup/Restore

- 77 Samsung Recovery Solution (Optional)



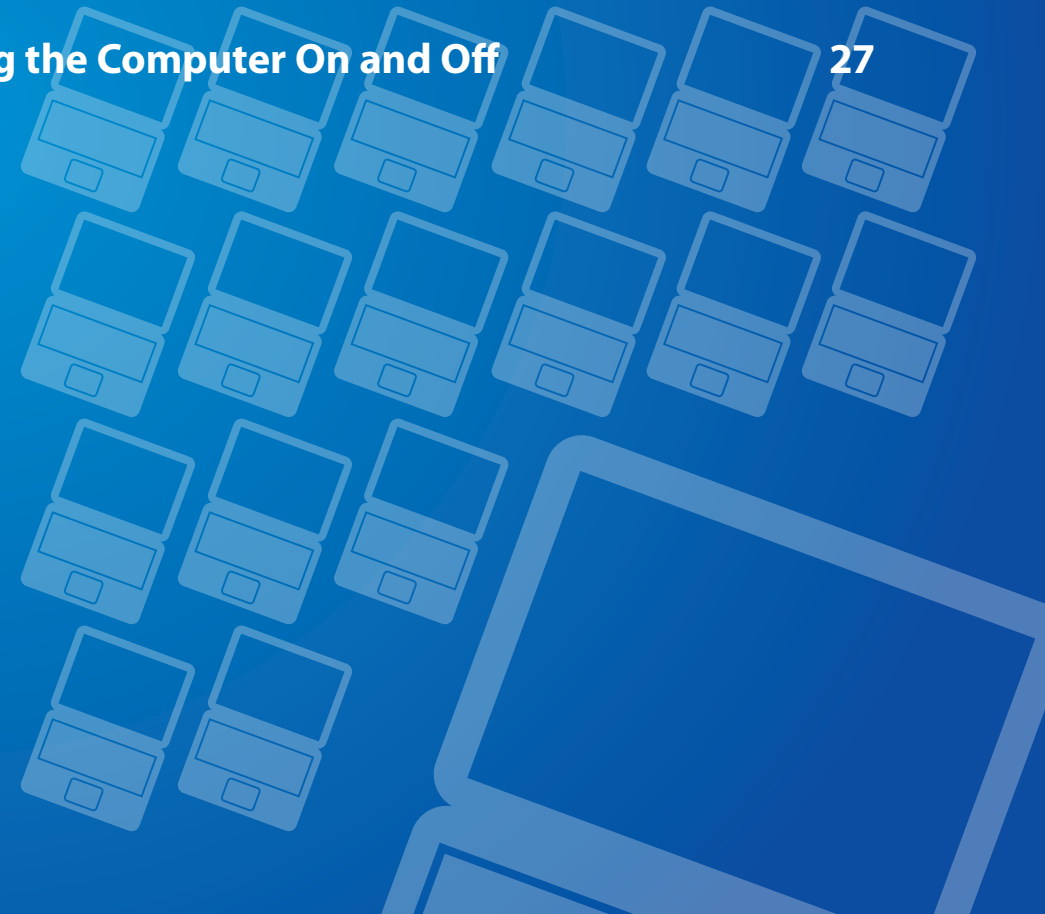
## Chapter 5. Appendix

- 90 Important Safety Information
- 92 Replacement Parts and Accessories
- 94 Regulatory Compliance Statements
- 107 WEEE Symbol Information
- 108 Samsung Packaging Take-Back Program
- 109 Product Specifications
- 111 Glossary



# Chapter 1. Getting Started

<b>Before You Start</b>	<b>4</b>
<b>Safety Precautions</b>	<b>7</b>
<b>Proper Posture During Computer Use</b>	<b>21</b>
<b>Overview</b>	<b>24</b>
<b>Turning the Computer On and Off</b>	<b>27</b>



Before reading the User Guide, first check the following information.





- Optional items, some devices and software referred to in the User Guide may not be provided and/or changed by upgrade.  
Note that the computer environment referred in the User Guide may not be the same as your own environment.
- The pictures used for the cover and the main body in the User Manual are those of the representative model of each series and may differ from the actual appearance of the product.
- This guide describes procedures for using both the mouse and the touchpad.
- This manual has been written for the Windows 7 operating system. The descriptions and figures may differ depending on the installed operating system.
- The User guide supplied with this computer may vary depending on your model.





## Using the software

- The software described in the main text can be launched using the following menu path.
  - **Start > All Programs**
  - **Start > All Programs > Samsung**
- When the programs are not installed, select **Samsung Recovery Solution > System Software** to install the programs. (Only for models supplied with Samsung Recovery Solution)

## Safety Precaution Notations

Icon	Notation	Description
	<b>Warning</b>	Failure to follow instructions marked with this symbol, may cause personal injury and or fatality.
	<b>Caution</b>	Failure to follow instructions marked with this symbol, may cause slight injury to yourself or damage your property.

## Text Notations

Icon	Notation	Description
	<b>Caution</b>	Content included in this section includes information required about the function.
	<b>Note</b>	Content included in this section includes helpful information to use the function.

## Copyright

© 2014 Samsung Electronics Co., Ltd.

Samsung Electronics Co., Ltd. owns the copyright of this manual.

No part of this manual may be reproduced or transmitted in any form or by any means, electronic or mechanical, without the consent of Samsung Electronics Co., Ltd.

The information in this document is subject to change without notice due to improving the performance of the product.

Samsung Electronics shall not be liable for any data loss. Please take care to avoid losing any important data and backup your data to prevent any such data loss.

## OS and Software Support

If you change the product's factory OS (Operating System) to another OS or if you install software which is not supported by the product's original factory OS, you will not receive any technical support, product exchange or refund. And a fee will be charged when requesting a service.

Please use your computer with the original factory OS. If you install an OS other than the factory OS, data may be deleted or the computer may not start.

## About the Product Capacity Representation Standard

### About the capacity representation of the storage

The capacity of the storage device (HDD, SSD) of the manufacturer is calculated assuming that 1KB=1,000 Bytes.

However, the operating system (Windows) calculates the storage device capacity assuming that 1KB=1,024 Bytes, and therefore the capacity representation of the HDD in Windows is smaller than the actual capacity due to the difference in capacity calculation.

(E.g. For a 80GB HDD, Windows represents the capacity as 74.5GB,  
 $80 \times 1,000 \times 1,000 \times 1,000 \text{ byte} / (1,024 \times 1,024 \times 1,024) \text{ byte} = 74.505 \text{ GB}$ )

In addition, the capacity representation in Windows may be even smaller because some programs such as Recovery may reside in a hidden area of the HDD.

### About Memory Capacity Representation

The memory capacity reported in Windows is less than the actual capacity of memory.

This is because BIOS or a video adapter uses a portion of memory or claims it for further use.

(E.g. For 1GB(=1,024MB) memory installed, Windows may report the capacity as 1,022MB or less)

# Safety Precautions

For your security and to prevent damage, please read the following safety instructions carefully.



Since this is commonly applied to Samsung Computers, some pictures may differ from actual products.



## Warning

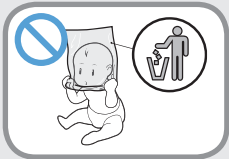
Failure to follow instructions marked with this symbol may cause personal injury and even fatality.

### Installation Related



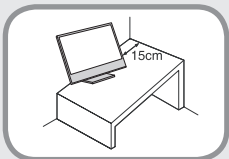
**Do not install the product in places exposed to humidity such as a bathrooms.**

There is a danger of electric shock. Use the product within the operating conditions specified in the Manufacturers User Manual.



**Keep the plastic bags out of the reach of children.**

There is a danger of suffocation.



**Keep a distance of 15cm or more between the computer and the wall and do not place any objects between them.**

This may increase the internal temperature of the computer and may cause an injury.



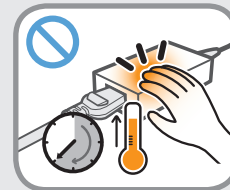
**Do not install the computer on a slant or a place prone to vibrations, or avoid using the computer in that location for a long time.**

This increases the risk that a malfunction or damage to the product will occur.



**Be careful that people are not exposed to the computer's ventilator, adapter, etc., as they generate heat over a long period of time when your PC is powered on.**

Exposing a part of your body close to the heat from the vent or AC adapter for long periods of time may cause a burn.



**Avoid blocking the vent at the bottom or side of the computer when using it on a bed or cushion.**

If the vent is blocked, there is a danger of damaging the computer or overheating the inside of the computer.

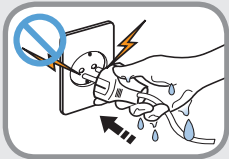


## Warning

Failure to follow instructions marked with this symbol may cause personal injury and even fatality.

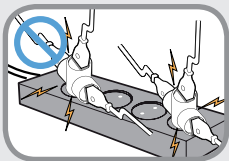
### Power Related

The power plug and wall outlet figures may differ depending on the country specifications and the product model.



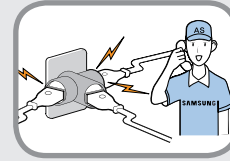
**Do not touch the main plug or power cord with wet hands.**

There is a danger of electric shock.



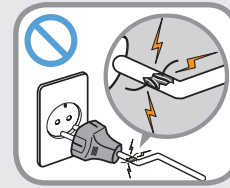
**Do not exceed the standard capacity (voltage/current) of a multiplug or power outlet extension when using it for the product.**

There is a danger of electric shock or fire hazard.



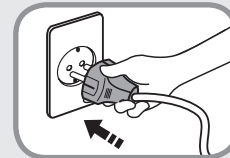
**If the power cord or power outlet makes a noise, disconnect the power cord from the wall outlet and contact a service center.**

There is a danger of electric shock or fire hazard.



**Do not use a damaged or loose main plug or power cord or power outlet.**

There is a danger of electric shock or fire hazard.



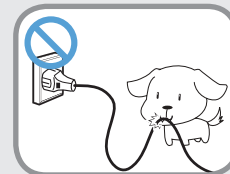
**Plug the power cord firmly into the power outlet and AC adapter.**

Failure to do so may cause fire hazard.



**Do not unplug the power cord by pulling the cable only.**

If the cord is damaged, it may cause electric shock.



**Do not bend the power cord excessively or do not place a heavy object over the power cord. It is especially important to keep the power cord out of reach of infants and pets.**

If the cord is damaged, it may cause electric shock or fire.

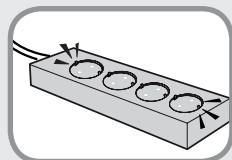


# Safety Precautions



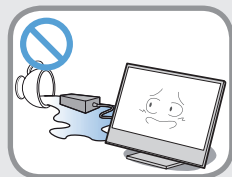
## Warning

Failure to follow instructions marked with this symbol may cause personal injury and even fatality.



**Connect the power cord to an outlet or multiple power plug (extended cable) with a ground terminal.**

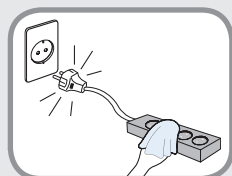
Failure to do so may result in electric shock. When the power supply is ungrounded, the current may leak resulting in electric shock.



**If water or other conductive substances (e.g. liquid, dust, metal powders, pencil leads, etc.) enter the product, disconnect the power cord and contact the Samsung service center.**

**If the notebook computer has an external type (removable) battery, separate the battery also.**

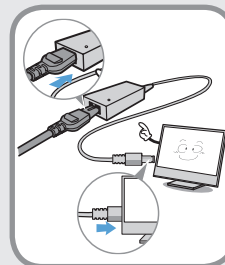
Damage to the device within the computer may cause electric shock or fire hazard.



**Keep the power cord or outlet clean so that they are not covered with dust.**

Failure to do so may result in fire.

## AC Adapter Usage Precautions

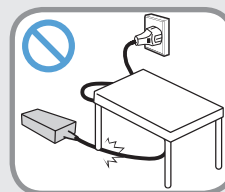


**Connect the power cord to the AC adapter firmly.**

Otherwise, there is a danger of fire due to an incomplete contact.

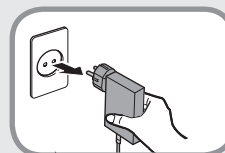
**Use only the AC adapter supplied with the product.**

Using another adapter may cause the screen to flicker.

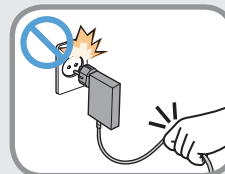


**Do not place heavy objects or step onto the power cord or AC adapter to avoid damaging the power cord or AC adapter.**

If the cord is damaged, there is a danger of electric shock or fire.



**Unplug the wall-mount AC adapter (adapter and plug intergrated type) from the wall outlet while holding the body and pulling it in the direction of the arrow.**



If you unplug the adapter by holding and pulling the cable, the adapter may be damaged and an electric shock, explosive sound or spark may occur as a result.



## Warning

Failure to follow instructions marked with this symbol may cause personal injury and even fatality.

### Battery Usage Related

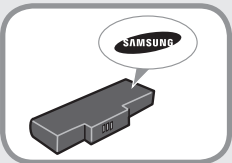


**Please charge the battery fully before using the computer for the first time.**



**Keep the battery out of the reach of infants and pets, as they could put the battery into their mouths.**

There is a danger of electric shock or choking.



**Use an authorized battery and AC adapter only.**

Please use an authorized battery and adapter approved by Samsung Electronics.

Unauthorized batteries and adapters may not meet the proper safety requirements and may cause problems or malfunctions and result in an explosion or fire.



**Do not use the computer in a badly ventilated location such as on bedding, on a pillow or cushion, etc, and do not use it in a location such as room with floor heating as it may cause the computer to overheat.**

Take care that the computer vents (on the side or the bottom) are not blocked especially in these environments. If the vents are blocked, the computer may overheat and it may cause a computer problem, or even an explosion.



**Do not use the computer in a humid location such as a bathroom or sauna.**

Please use the computer within the recommended temperature and humidity range (10~32°C, 20~80% RH).

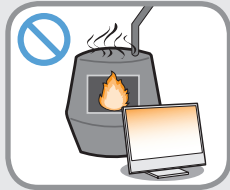


**Do not close the LCD panel and put the computer into your bag to move it when it is still turned on.**

If you put the computer into your bag without turning it off, the computer may overheat and there is a danger of fire. Shut the computer down properly before moving it.

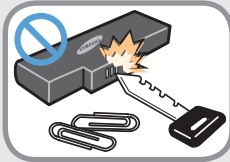
## Warning

Failure to follow instructions marked with this symbol may cause personal injury and even fatality.



**Never heat the product(or battery) or put the product(or battery) into a fire. Do not put or use the product(or battery) in a hot location such as a sauna, inside a vehicle exposed to the heat, and so on.**

There is a danger of an explosion or fire.



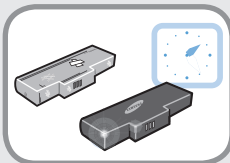
**Take care not to allow metal objects such as a key or clip to touch the battery terminal (metal parts).**

If a metal object touches the battery terminals, it may cause excessive current flow and it may damage the battery, or result in a fire.



**If liquid leaks out of the product(or battery) or there is a funny smell coming from the product(or battery), remove the the product(or battery) the computer and contact a service center.**

There is a danger of an explosion or fire.



**To use the computer safely, replace a dead battery with a new, authorized battery.**

## Usage Related



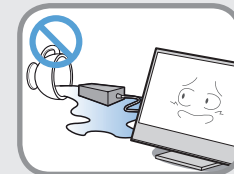
**Disconnect all cables connected to the computer before cleaning it. If your notebook is external & removable battery type, remove the external battery.**

There is a danger of electric shock or damage to the product.



**Do not connect a phone line connected to a digital phone to the modem.**

There is a danger of a electric shock, fire or damage to the product.



**Do not place any container filled with water or chemicals over or near the computer.**

If water or chemicals enter the computer, this may cause fire or electric shock.



**If the computer is broken or dropped, disconnect the power cord and contact a service center for a safety check.**

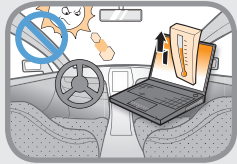
**If the notebook computer has an external type (removable) battery, separate the battery also.**

Using a broken computer may cause electric shock or fire hazard.



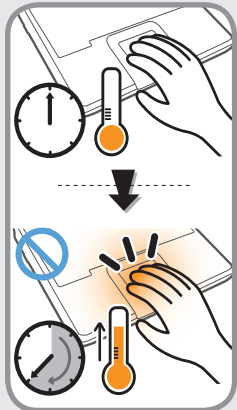
## Warning

Failure to follow instructions marked with this symbol may cause personal injury and even fatality.



**Avoid direct sunlight when the computer is in an air-tight location such as inside a vehicle.**

There is a danger of a fire hazard. The computer may overheat and also present opportunity to thieves.



**Do not use your computer for long periods of time while any part of your body is making direct contact with it. The temperature of the product may increase during normal operation.**

This may result in harming or burning your skin.

## Upgrade Related



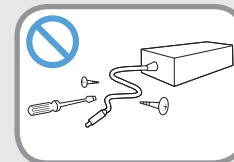
**Be sure to upgrade the computer by yourself only if you have sufficient knowledge and ability.**

If this is not the case, ask for assistance from the service center or an authorized engineer for the upgrade.



**Be sure to upgrade only the parts specified in the user manual according to the procedures described in the user manual.**

Do not disassemble any other parts or devices by yourself. There is a danger of a electric shock, fire or damage to the product.



**Never disassemble the power supply or AC adapter.**

There is a danger of electric shock.



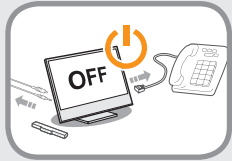
**When removing the RTC (Real Time Clock) battery, keep it out of the reach of children as they could touch and/or swallow it.**

There is a danger of choking. If a child has swallowed it, contact a doctor immediately.



## Warning

Failure to follow instructions marked with this symbol may cause personal injury and even fatality.



Before upgrading the computer, be sure to shutdown the computer first and then separate all connected cables. If the notebook computer has an external type (removable) battery, separate the battery, too.

Failure to do so may cause electric shock.

## Security and Movement Related

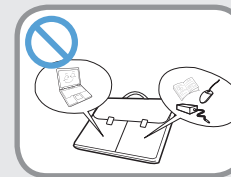


Follow the instructions for the relevant location (e.g. airplane, hospital, etc.) when using a wireless communication device (wireless LAN, Bluetooth, etc.).



Avoid exposing a drive to magnetic fields. Security devices with magnetic fields include airport walk-through devices and security wands.

The airport security devices that check carry-on luggage, such as conveyor belts, use x-rays instead of magnetism and will not damage a drive.



When carrying the notebook computer with other items, such as the adapter, mouse, books etc, take care not to press anything against the notebook computer.

If a heavy object is pressed against the notebook computer, a white spot or stain may appear on the LCD. Therefore, take care not to apply any pressure to the notebook.

In this case, place the notebook computer in a separate compartment away from the other objects.



## Caution

Failure to follow instructions marked with this symbol may cause slight injury or damage to the product.

### Installation Related

**Do not block the ports (holes), vents, etc. of the product and do not insert objects.**

Damage to a component within the computer may cause electric shock or fire.

**When using the computer with it lying on its side, place it so that the vents face upwards.**

Failure to do so, may cause the internal temperature of the computer to rise and the computer to malfunction or halt.

**Do not place a heavy object over the product.**

This may cause a problem with the computer. In addition, the object may fall and cause injury, or damage the computer.

### Battery Usage Related

**Dispose of worn-out batteries properly.**

- There is a danger of fire or explosion.
- The battery disposal method may differ depending on your country and region. Dispose of the used battery in an appropriate way.

**Do not throw or disassemble the battery and do not put it into water.**

This may cause an injury, fire or explosion.

**Use only a battery authorized by Samsung Electronics.**

Failure to do so may cause an explosion.

**Avoid contact with metal objects such as car keys or clips when keeping or carrying a battery.**

Contact with a metal may cause excessive current and a high temperature and may damage the battery or cause a fire.

**Charge the battery according to the instructions in the manual.**

Failure to do so, may cause an explosion or fire from damage to the product.

**Do not heat the product(or battery) or expose it to heat (e.g. inside a vehicle during the summer).**

There is a danger of explosion or fire.



## Caution

Failure to follow instructions marked with this symbol may cause slight injury or damage to the product.

### Usage Related

**Do not place a candle, light cigar, etc. over or on the product.**

There is a danger of fire.

**Use a wall outlet or multi-plug with a grounding part.**

Failure to do so may cause electric shock hazard.

**Make sure to have the product tested by a safety service engineer after repairing the product.**

Authorized Samsung Repair Centers will carry out safety checks after a repair. Using a repaired product without testing it for safety may cause an electric shock or fire.

**In case of lightning, immediately turn the system off, disconnect the power cord from the wall outlet and phone line from modem. Do not use a modem or phone.**

There is a danger of electric shock or fire.

**Do not use your computer and AC-Adapter on your lap or soft surfaces.**

If the computer temperature increases, there is a danger of burning yourself.

**Connect only permitted devices to the connectors or ports of the computer.**

Failure to do so, may cause electric shock and fire.

**Close the LCD panel only after checking if the notebook computer is turned off.**

The temperature may rise and it may cause overheating and deformation of the product.

**Do not press the Eject Button while the CD-ROM drive is in operation.**

You might lose data and the disk might be suddenly ejected and could cause an injury.

**Take care not to drop the product while using it.**

This may cause personal injury or loss of data.

**Do not touch the antenna with electricity facility such as the power outlet.**

There is a danger of electric shock.

**When handling computer parts, follow the instructions on the manual supplied with the parts.**

Failure to do so, may cause damage to the product.

# Safety Precautions



## Caution

**Failure to follow instructions marked with this symbol may cause slight injury or damage to the product.**

**If the computer emits smoke, or there is a burning smell, disconnect the power plug from the wall outlet and contact a service center immediately. If your notebook is external & removable battery type, remove the external battery.**

There is a danger of fire.

**Do not use a damaged or modified CD.**

There is a danger of damaging the product or personal injury.

**Do not insert your fingers into the PC Card Slot.**

There is a danger of injury or electric shock.

**Use recommended computer cleansing solution when cleaning the product and only use the computer when it is completely dried.**

Failure to do so may cause electric shock or fire.

**Emergency disk eject method using paperclip should not be used while the disk is in motion. Make sure to use the emergency disk eject method only when the Optical Disk Drive has stopped.**

There is a danger of injury.

**Do not place your face close to the Optical Disk Drive tray when it is operating.**

There is a danger of injury due to an abrupt ejection.

**Check CDs for cracks and damage prior to use.**

It may damage the disc and cause disorder of device and injury of user.

**Do not leave the product in a location exposed to magnetic fields.**

- A magnetic field may cause the product to work abnormally or the battery to discharge.
- The information saved on the magnetic tape of a credit card, phone card, bankbook, transportation tickets and so on can be damaged by a computer's electromagnetic field.





## Caution

Failure to follow instructions marked with this symbol may cause slight injury or damage to the product.

### Upgrade Related

#### **Take care when touching the product or parts.**

The device may be damaged or you may be injured.

#### **Take care not to throw or drop a computer part or device.**

This may cause injury or damage to the product.

#### **Make sure to close the computer cover before connecting the power after a reassembly.**

There is a danger of electric shock if your body touches an internal part.

#### **Use parts authorized by Samsung Electronics only.**

Failure to do so, may cause fire or damage the product.

#### **Never disassemble or repair the product by yourself.**

There is a danger of electric shock or fire.

#### **To connect a device that is not manufactured or authorized by Samsung Electronics, enquire at your service center before connecting the device.**

There is a danger of damaging the product.

### Storage and Movement Related

**When moving the product, turn the power off and separate all connected cables first.**

The product might be damaged or users may trip over the cables.

**For long periods of not using the notebook computer, discharge the battery and preserve as it is detached. (For external & removable battery type)**

The battery will be preserved at its best condition.

**Do not operate or watch the computer while driving a vehicle.**

There is a danger of a traffic accident. Please concentrate on driving.

**Be careful when closing the LCD panel.**

Closing the LCD panel with any object (such as a pen) placed on the device's keyboard may break the LCD panel.



## Caution

Failure to follow instructions marked with this symbol may cause slight injury or damage to the product.

### Cautions on Preventing Data Loss (Hard Disk Management)

#### Take care not to damage the data on a hard disk drive.

- A hard disk drive is so sensitive to external impact that an external impact may cause loss of data on the surface of the disk.
- Take extra care, because moving the computer or an impact on the computer when it is turned on may damage the data of the hard disk drive.
- The company is not liable for any loss of data on the hard disk drive.

#### Causes that may damage the data of a hard disk drive and the hard disk drive itself.

- The data may be lost when an external impact is applied to the disk while disassembling or assembling the computer.
- The data may be lost when the computer is turned off or reset by a power failure while the hard disk drive is operating.
- The data may be lost and irrecoverable due to a computer virus infection.
- The data may be lost if the power is turned off while running a program.
- Sudden impact or movement to the computer while the hard disk drive is operating, may cause files to be corrupted or bad sectors on the hard disk.

**To prevent data loss due to damage to the hard disk drive, please backup your data frequently.**

## Using the Power Supply in an Airplane

Since the power outlet type differs depending on the type of airplane, connect the power appropriately.



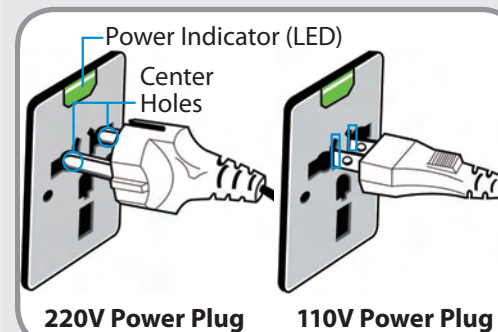
Since the representative figures of the power plug and the auto adapter are used, they may differ from the actual parts.

## When Using the AC Power Plug

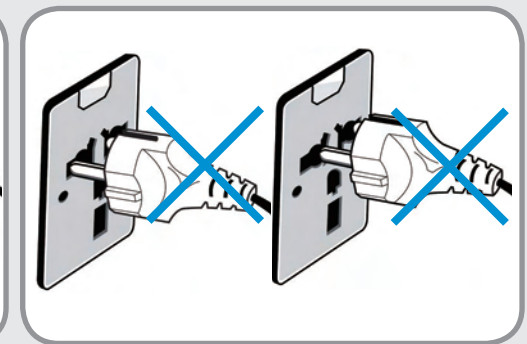
Connect the power plug pins perpendicular into the center of the power outlet.

- If the plug pins are not inserted into the center of the holes, the plug pins are only inserted up to half their length. In this case, reconnect the power plug.
- You have to insert the power plug into the outlet when the power indicator (LED) of the power outlet is lit green. If the power is connected properly, the power indicator (LED) remains green.

Otherwise, the power indicator (LED) is turned off. In this case, unplug the power, check if the power indicator (LED) is green, and then reconnect the power plug.



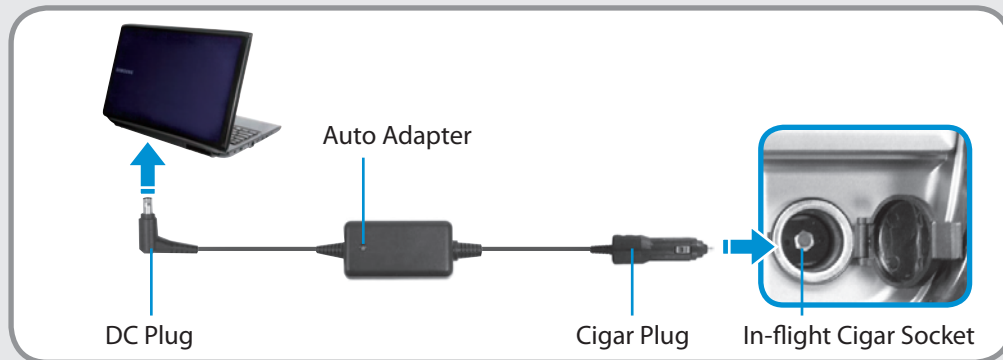
Good Example ○



Wrong Example ✕

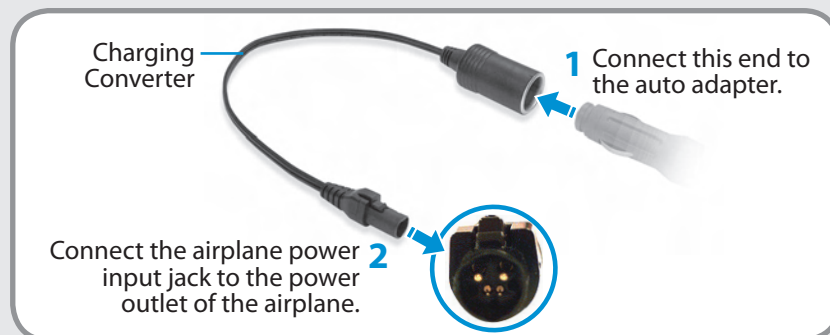
## When Using the Auto Adapter

When a cigar socket is provided, you have to use the auto adapter (optional). Insert the cigar plug of the auto adapter into the cigar socket and connect the DC plug of the auto adapter to the power input port of the computer.



## When Using the Airplane Charging Converter

Depending on the airplane, you have to use the auto adapter and charging converter. Connect the airplane charging converter (optional) to the auto adapter (optional) and then insert the airplane power input jack into the power outlet.



# Proper Posture During Computer Use

Maintaining a proper posture during computer use is very important to prevent physical harm.

The following instructions are about maintaining a proper posture during computer use developed through human engineering. Please read and follow them carefully when using the computer.

Otherwise, the probability of (RSI: Repetitive Strain Injury) from repeated operations may increase and serious physical harm may be caused.



- The instructions in this manual have been prepared so that they can be applied within the coverage of general users.
- If the user is not included in the coverage, the recommendation is to be applied according to the user's needs.

## Proper Posture

### Adjust the heights of desks and chairs appropriate to your height.

The heights are to be adjusted so that your arm forms a right angle when you place your hand over the keyboard while sitting down on a chair.

Adjust the height of chair so that your heel is comfortably placed on the floor.

- Do not use the computer while you are lying down, but only while you are sitting down.
- Do not use the computer on your lap. If the computer temperature increases, there is a danger of burning yourself.
- Work while keeping your waist straight.
- Use a chair with a comfortable back.
- Keep the center of your leg weight not on the chair but on your feet when you are sitting on a chair.
- To use the computer while talking over the telephone, use a headset. Using the computer with the phone on your shoulder is bad for posture.
- Keep frequently used items within a comfortable work range (where you can reach them with your hands).



# Proper Posture During Computer Use

## Eye Position

Keep the monitor or LCD away from your eyes by at least 50cm.



- Adjust the height of the monitor and the LCD screen so that its top height is equal to or lower than your eyes.
- Avoid setting the monitor and LCD excessively bright.
- Keep the monitor and LCD screen clean.
- If you wear glasses, clean them before using the computer.
- When entering contents printed on a paper into the computer, use a static paper holder so that the height of the paper is almost equal to that of the monitor.

## Hand Position

Keep your arm at a right angle as shown by the figure.



- Keep the line from your elbow to your hand straight.
- Do not place your palm over the keyboard while typing.
- Do not hold the mouse with excessive force.
- Do not press the keyboard, touchpad or mouse with excessive force.
- It is recommended connecting an external keyboard and mouse when using the computer for long periods of time.

# Proper Posture During Computer Use

## Volume Control (Headphones and Speakers)

**Check your volume first to listen to music.**



- Check if the volume is too loud before using headphones.
- It is not recommended using headphones for long periods of time.
- Any deviation from the equalizer default setting could cause hearing impairment.
- The default setting can be changed through software and driver updates without your intervention. Please check the equalizer default setting before first usage.

To prevent possible hearing damage, do not listen at high volume levels for long periods.



## Use Time (Break Time)

- Take a break for 10 minutes or more after a 50-minute period when working for more than one hour.

## Illumination

- Do not use the computer in dark locations. The illumination level for computer use must be as bright so for reading a book.
- Indirect illumination is recommended. Use a curtain to prevent reflection on the LCD screen.

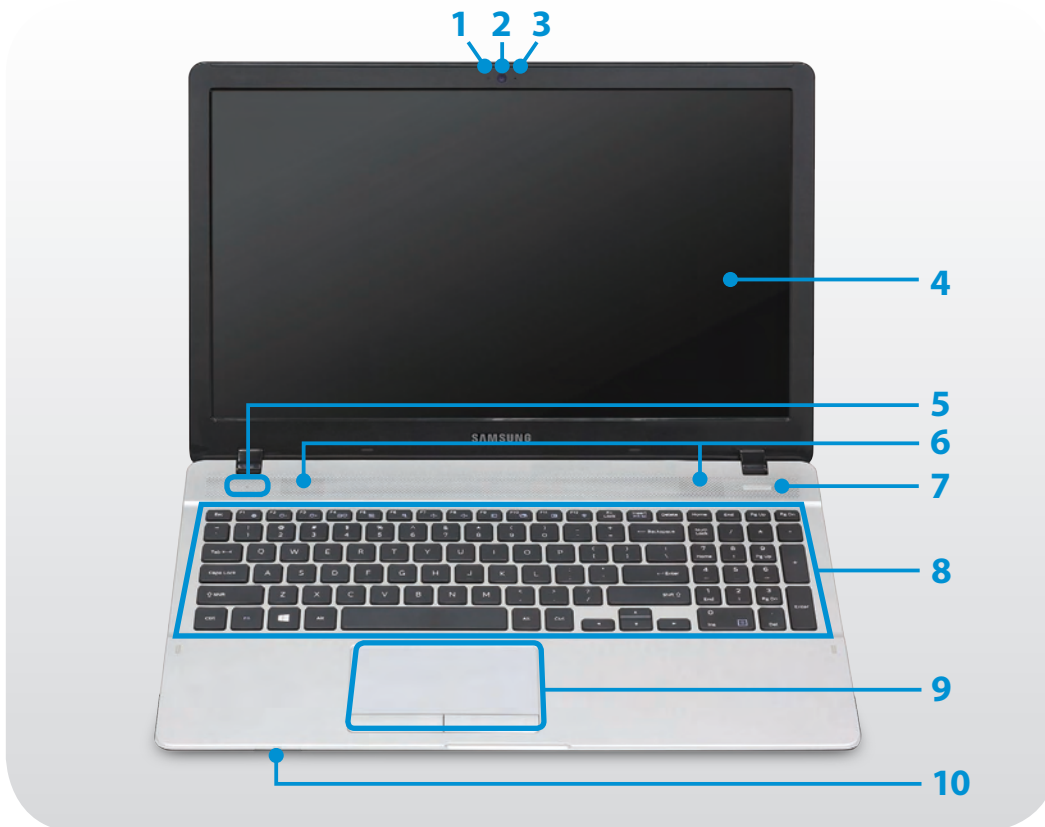
## Operation Condition



- Do not use the computer in hot and humid locations.
- Use the computer within the allowed temperature and humidity range specified in the User Manual.

## Front View



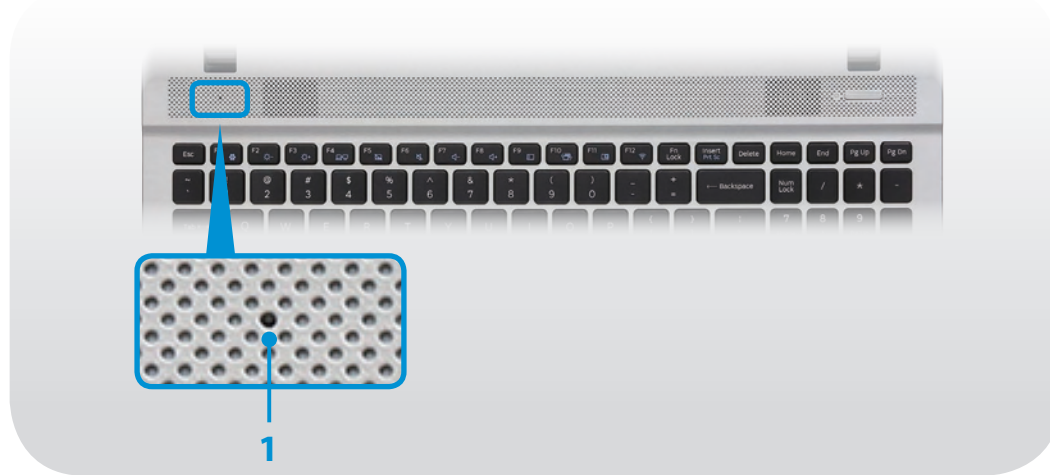
The pictures used for the cover and the main body in the User Manual are those of the representative model of each series. Therefore the colors and appearance of the pictures may differ from the actual appearance of the product depending on the model.



1	<b>Camera operating indicator (Optional)</b>	This indicates the camera operating status.
2	<b>Camera (Optional)</b>	Using this camera, you can take still pictures and record video.
3	<b>Microphone (Optional)</b>	You can use the built-in microphone.
4	<b>LCD</b>	The screen images are displayed here.
5	<b>Power LED</b>	Shows the operating status of the computer. The corresponding operating LED is lit when the corresponding function operates.
6	<b>Speaker</b>	A device used to generate sound.
7	<b>Power Button</b> 	Turns the computer on and off.
8	<b>Keyboard</b>	A device to enter data by pressing the keys.
9	<b>Touchpad/Touchpad Buttons</b>	The touchpad and touchpad buttons provide functions similar to the mouse ball and buttons.
10	<b>Multi Card Slot</b>  SD	A card slot supports multi cards.



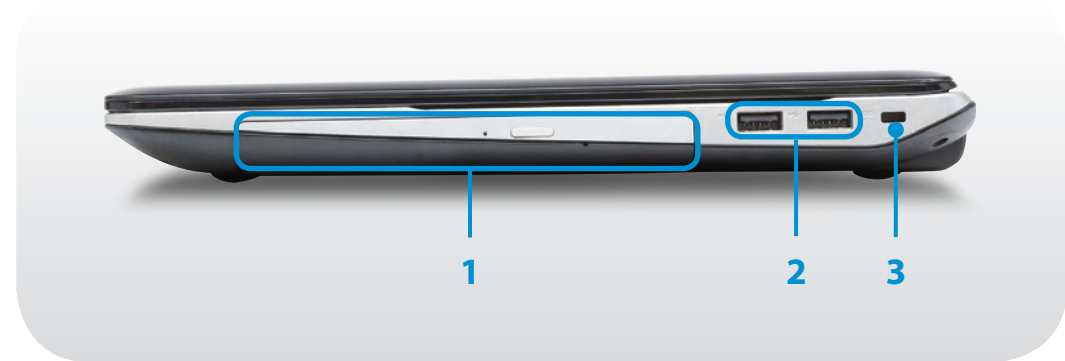
## Power LED



### 1 Power LED

- Turns blue while the computer is turned on.
- Shows the battery's charging status while the computer is turned off.
  - **Red:** Battery charging is in progress.
  - **Green:** Battery is fully charged.

## Right View



### 1 CD Drive (ODD) (Optional)

Plays CD or DVD titles.

Since an ODD(Optical Disk Drive) is optional, the installed drive depends on the computer model.

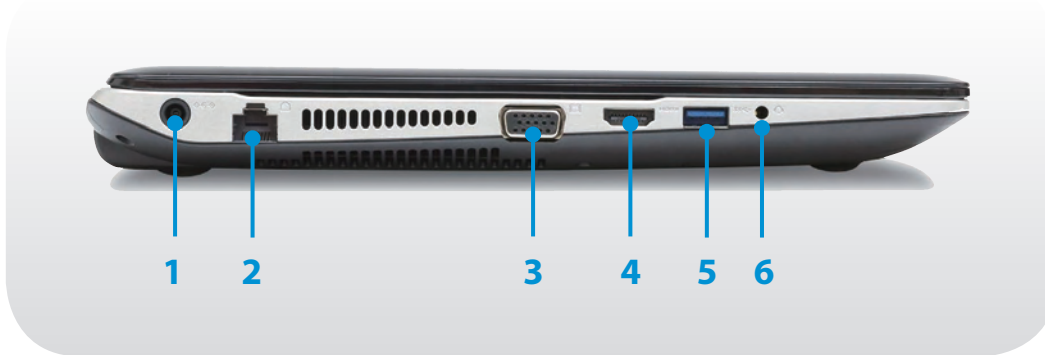
### 2 USB 2.0 Port

You can connect USB devices to the USB port such as a keyboard/mouse, digital camera, etc.

### 3 Security Slot











You can secure the computer by connecting a lock and cable to the Security Slot.

## Left View



### What is a chargeable USB port?

- USB device accessing and charging functions are supported.
- The USB charging function is supported regardless of whether the power is turned on or off.
- Charging a device through a chargeable USB port may take longer than general charging.
- Using the Chargeable USB function when the computer is running on battery power reduces the battery usage time.
- The user cannot evaluate the charging status of the USB device from the computer.
- This may not be supported for some USB devices.

1	DC Jack 	A jack to connect the AC adapter that supplies power to the computer.
2	Wired LAN Port 	Connect the Ethernet cable to this port.
3	Monitor Port 	A port used to connect a monitor, TV or projector supporting a 15pin D-SUB interface.
4	HDMI Port 	You can connect an HDMI cable to this port. Using this port, you can enjoy digital video and audio on the TV.
5	USB 3.0 Port  or Chargeable USB 3.0 Port  (Optional)	USB ports to which you can connect USB devices as well as a chargeable USB port are provided.  Using a chargeable USB port, you can access or charge a USB device.   The port can be distinguished by the figure (  or  ) printed on the port of the product.
6	Ear-set / headset Jack 	This is the jack for connecting an ear-set or headset.

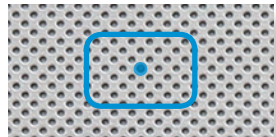
# Turning the Computer On and Off

## Turning the computer on

- 1 Connect the **AC adapter**.
- 2 Lift the LCD panel up.
- 3 Press the **Power button** to turn the computer on.



- 4 Turns blue while the computer is turned on.



## About Windows Activation

When you turn the computer on for the first time, the Windows activation screen appears.

Follow the activation procedures according to the instructions on the screen to use the computer.

When you turn on the computer for the first time, the factory date settings are displayed. Set your local time and date.

## Adjusting the screen brightness

When the computer runs on battery power, the LCD brightness is automatically set to low.

Press the **Fn** + **F3** key combination to increase the screen brightness.

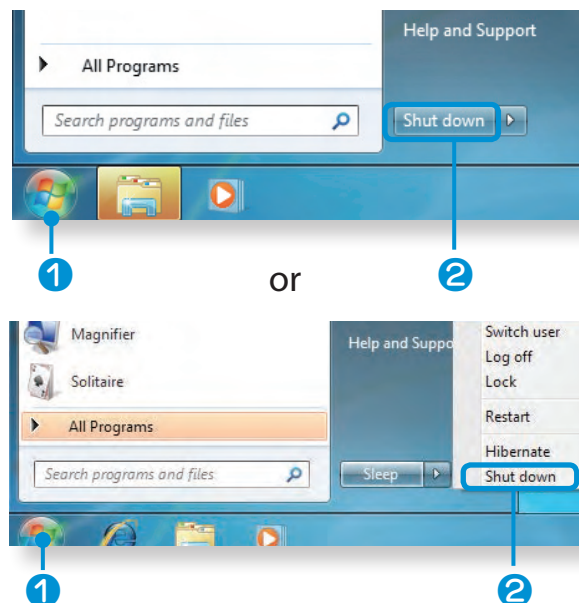
# Turning the Computer On and Off

## Turning the computer off



- Since the procedures to turn the computer off may differ depending on the installed operating system, please turn the computer off according to the procedures for the purchased operating system.
- Save all your data before clicking on **Shut down**.
- If **Easy Settings** is installed, the system shutdown location may differ.

Click **1 Start**  > **2 Shut down mode**  to shutdown the computer.





## Chapter 2. Using the computer

<b>Keyboard</b>	<b>30</b>
<b>Touchpad</b>	<b>33</b>
<b>Multi Card Slot (Optional)</b>	<b>37</b>
<b>Connecting an External Display Device</b>	<b>40</b>
<b>Connecting an External Digital Device</b>	<b>44</b>
<b>Adjusting the Volume</b>	<b>45</b>
<b>Wired Network</b>	<b>46</b>
<b>Wireless Network (Optional)</b>	<b>49</b>
<b>Using the TPM Security Device (Optional)</b>	<b>52</b>

Shortcut key functions and procedures are discussed in the following sections.



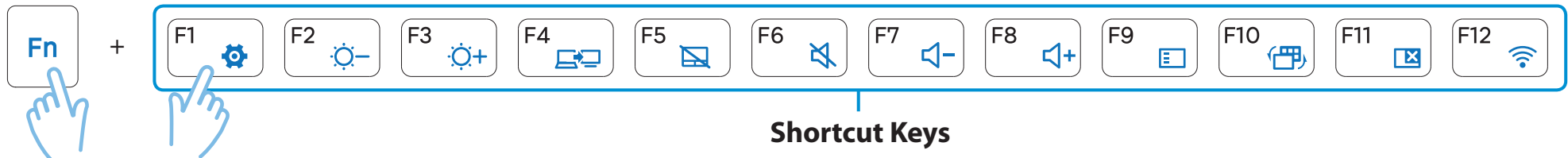
- The keyboard image may differ from the actual keyboard.
- The keyboard may differ depending on your country. The following mainly describes the shortcut keys.

## Shortcut Keys

While pressing and holding the **Fn** key, press a **shortcut keys**.

Alternatively, press the **Fn Lock** key as well as a hot key to use the hot key functions more easily.

### ► Method 1



### ► Method 2

