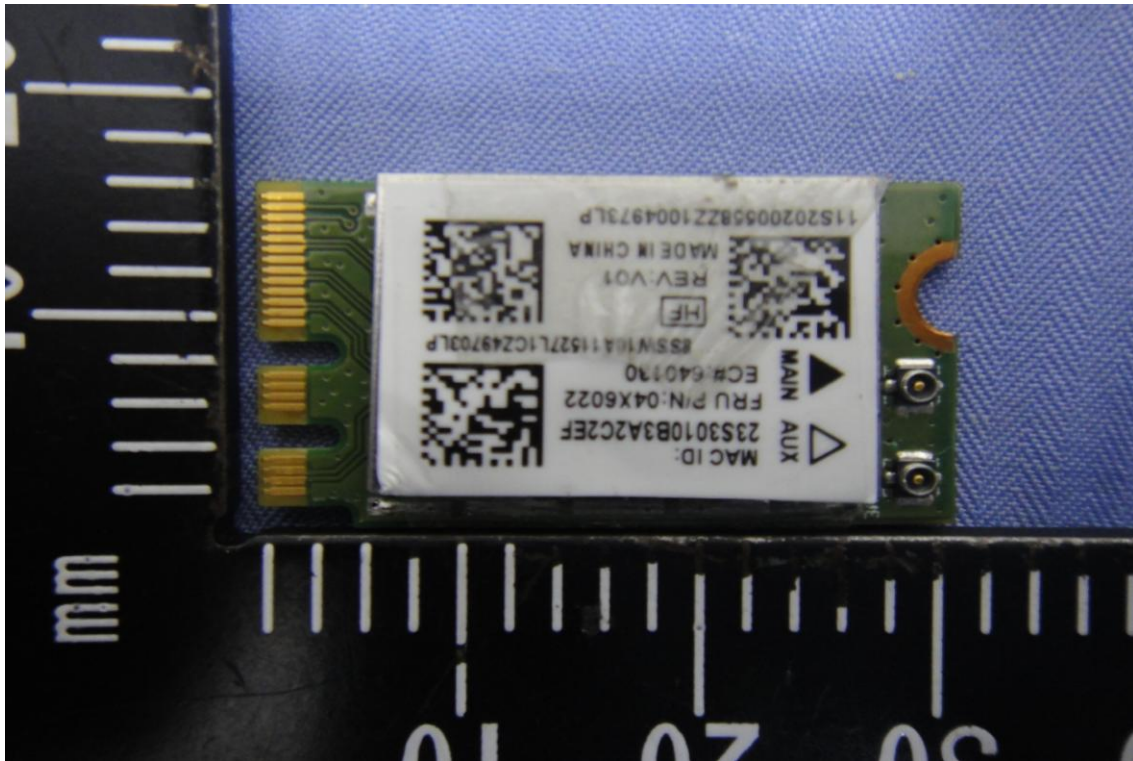
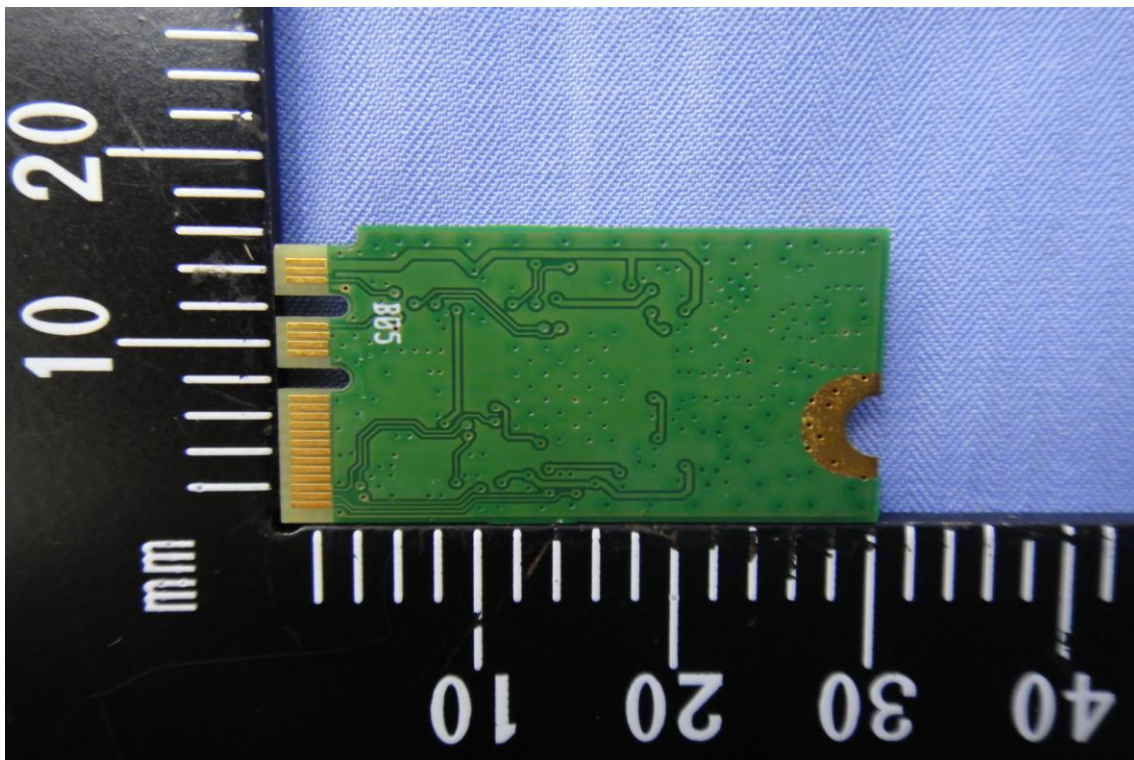
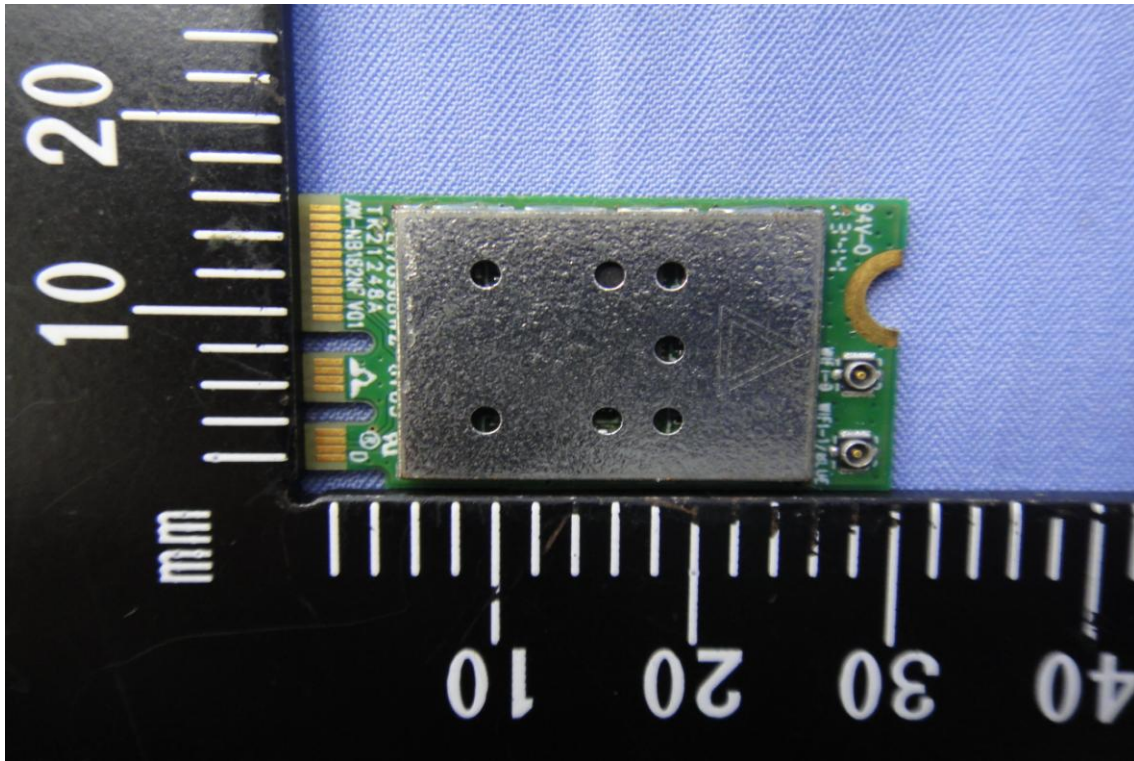


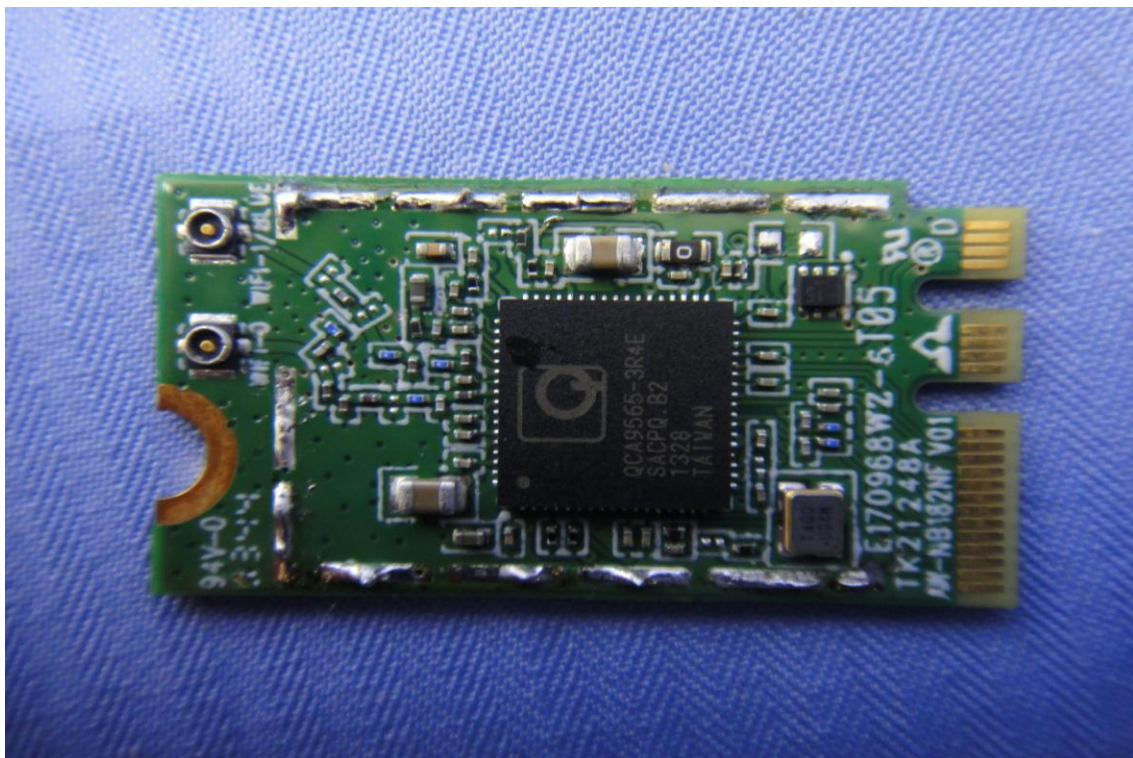
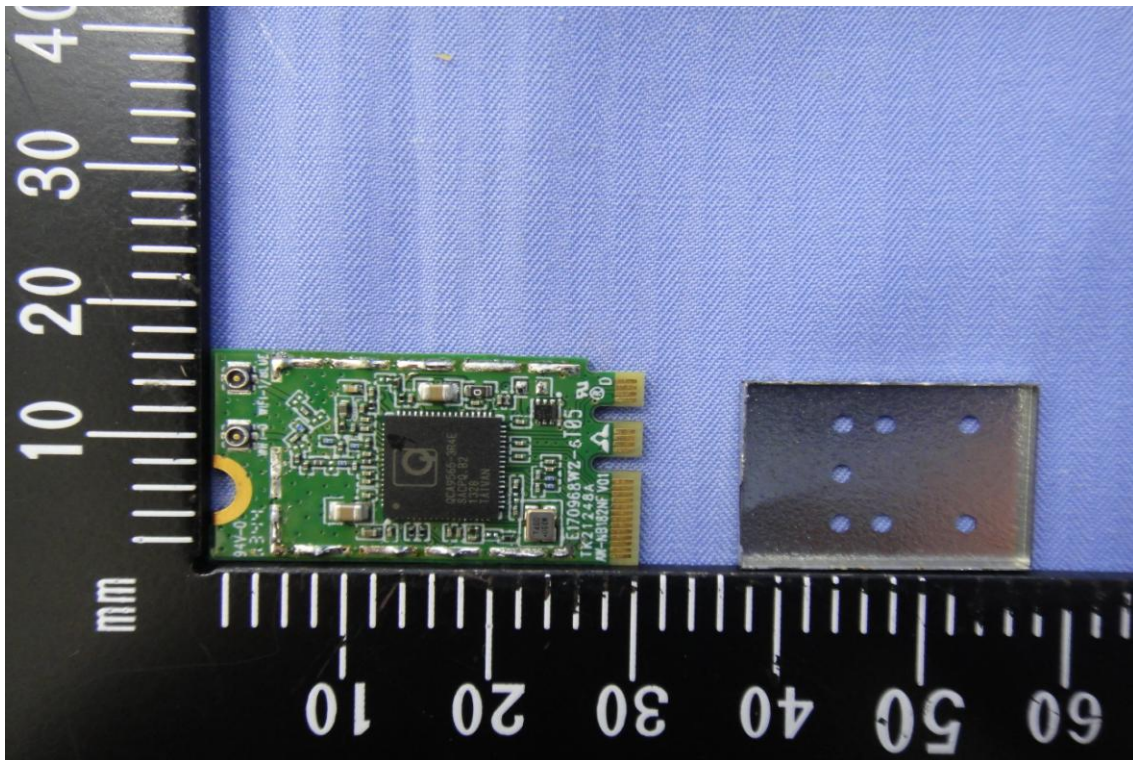
The image shows the internal components of a laptop, likely a Lenovo ThinkPad, with the bottom cover removed. The main components visible are:

- Motherboard:** A green printed circuit board (PCB) with various components, including a CPU, RAM, and various connectors.
- RAM:** Two blue DDR4 RAM modules are installed in the motherboard's memory slots. One module has a label that reads "DIMM 11S1120".
- SSD:** A blue M.2 SSD is installed in the motherboard's M.2 slot. The label on the SSD reads "MGE E3402", "MGE E3", "W-1", and "V VW-1".
- Wi-Fi Card:** A white Wi-Fi card is installed in the motherboard's M.2 slot. The label on the card reads "4R7", "PL-5402", and "MGE E3402".
- Connectors:** Various connectors are visible, including a USB-C port, a USB-A port, and a FireWire port.
- Lenovo Logo:** The "lenovo" logo is visible on the bottom cover.



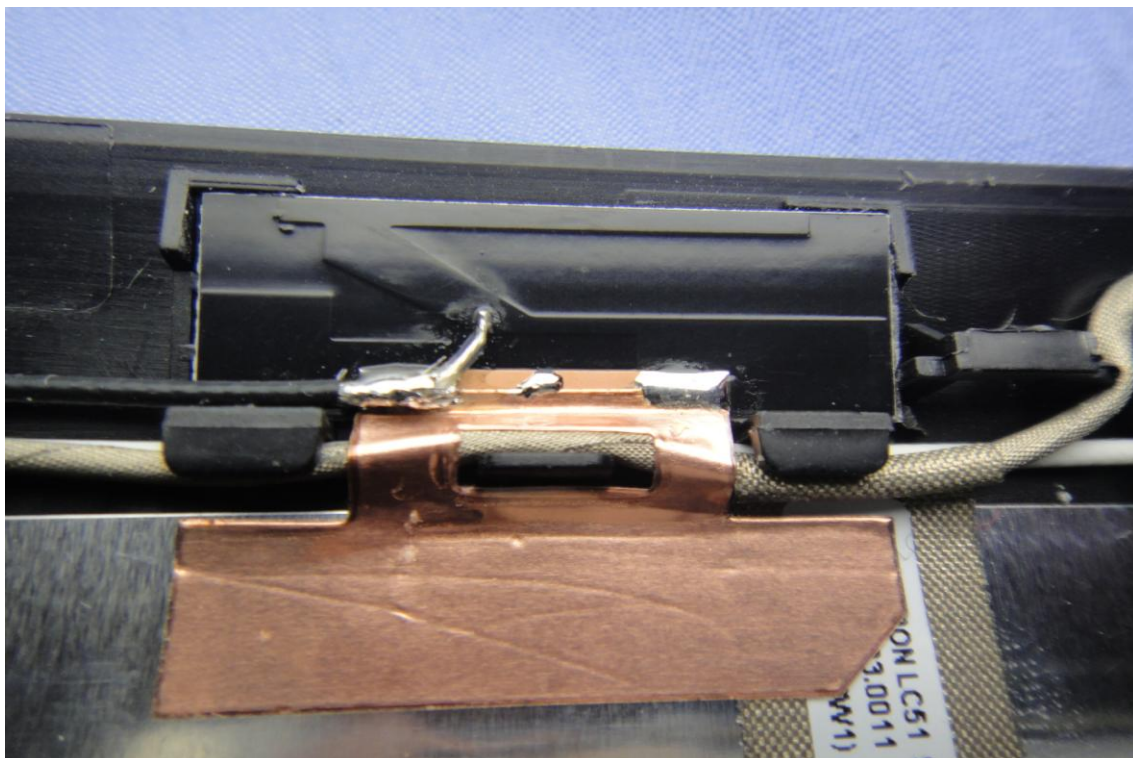


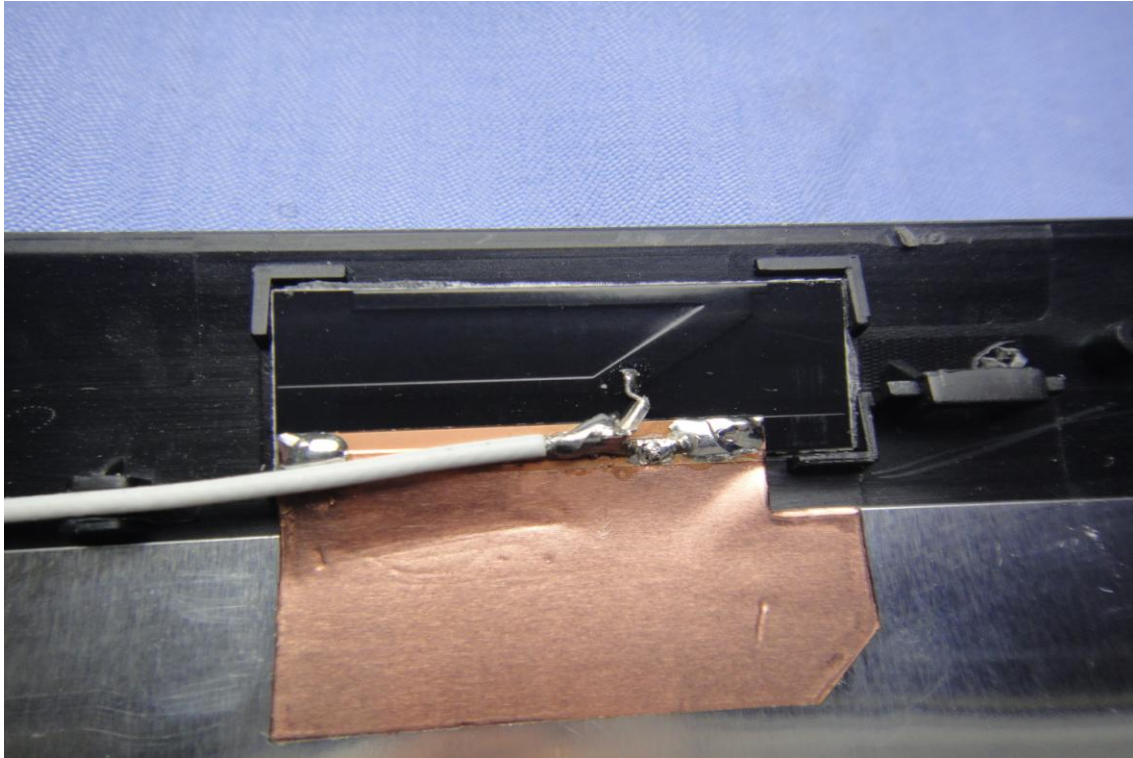






For High-Tek Electronics Co.,Ltd







For Wistron Neweb Corporation



