

VENUE 8 Pro

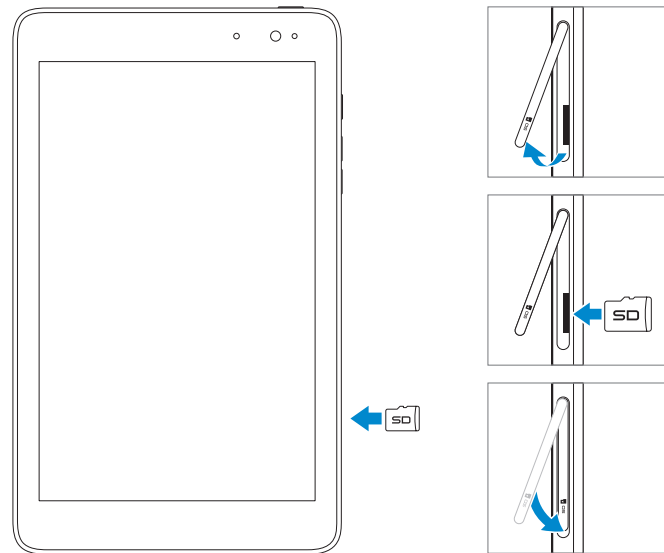
Quick Start Guide

Translated Text Here
Translated Text Here
Translated Text Here
Translated Text Here



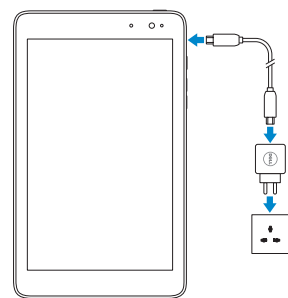
1 Insert microSD card (optional)

Insert microSD card (optional)
Insert microSD card (optional)
Insert microSD card (optional)
Insert microSD card (optional)



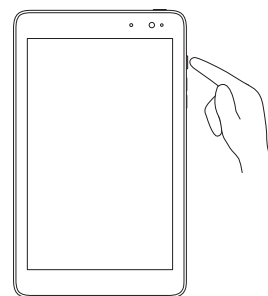
2 Charge the battery for at least 4 hours

Charge the battery for at least 4 hours
Charge the battery for at least 4 hours
Charge the battery for at least 4 hours
Charge the battery for at least 4 hours



3 Press and hold the power button to turn on the tablet

Press and hold the power button to turn on the tablet
Press and hold the power button to turn on the tablet
Press and hold the power button to turn on the tablet
Press and hold the power button to turn on the tablet



4 Finish Windows setup

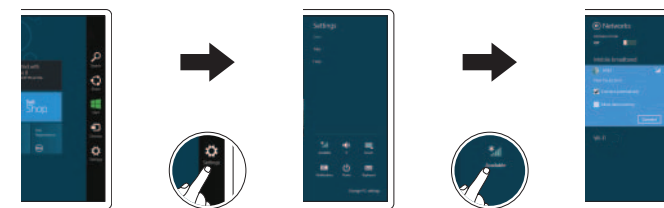
Finish Windows setup | Finish Windows setup
Finish Windows setup | Finish Windows setup





Enable security
Enable security
Enable security
Enable security

5 Connect to a network

Connect to a network | Connect to a network
Connect to a network | Connect to a network



In the charms sidebar, tap **Settings** , tap the **Wireless** icon , select your network, and tap **Connect**.

In the charms sidebar, tap **Settings** , tap the **Wireless** icon , select your network, and tap **Connect**.

In the charms sidebar, tap **Settings** , tap the **Wireless** icon , select your network, and tap **Connect**.

In the charms sidebar, tap **Settings** , tap the **Wireless** icon , select your network, and tap **Connect**.

In the charms sidebar, tap **Settings** , tap the **Wireless** icon , select your network, and tap **Connect**.

Explore resources

Explore Resources | Explore Resources
Explore Resources | Explore Resources



Help and Tips
Help and Tips | Help and Tips
Help and Tips | Help and Tips



My Dell
My Dell | My Dell
My Dell | My Dell



Dell Shop
Dell Shop | Dell Shop
Dell Shop | Dell Shop

For Proof Only

Dell Confidential

Product support

Product support | Product support
Product support | Product support

dell.com/support

Contact Dell

Contact Dell | Contact Dell
Contact Dell | Contact Dell

dell.com/contactdell

Regulatory and safety

Regulatory and safety | Regulatory and safety
Regulatory and safety | Regulatory and safety

dell.com/regulatory_compliance

Regulatory model/type

Regulatory model/type | Regulatory model/type
Regulatory model/type | Regulatory model/type

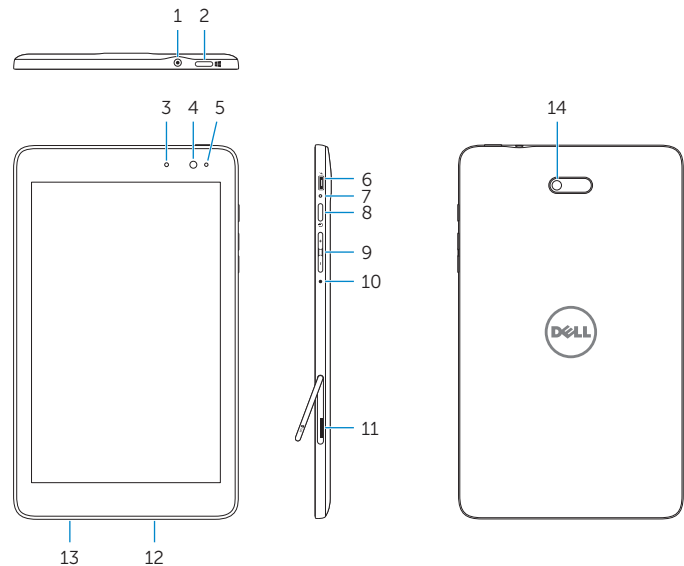
T01D/T01D001

Model

Model | Model | Model | Model

Venue 5830

Features | Features | Features | Features | Features



- 1. Headset port
- 2. Windows button
- 3. Camera-status light
- 4. Front camera
- 5. Ambient-light sensor
- 6. Micro-USB port
- 7. Battery-charging light
- 8. Power button
- 9. Volume buttons (2)
- 10. Microphone

- 11. MicroSD-card slot
- 12. Speaker
- 13. Service Tag label
- 14. Rear camera

- 1. Headset port
- 2. Windows button
- 3. Camera-status light
- 4. Front camera
- 5. Ambient-light sensor
- 6. Micro-USB port
- 7. Battery-charging light
- 8. Power button
- 9. Volume buttons (2)
- 10. Microphone

- 11. MicroSD-card slot
- 12. Speaker
- 13. Service Tag label
- 14. Rear camera

- 1. Headset port
- 2. Windows button
- 3. Camera-status light
- 4. Front camera
- 5. Ambient-light sensor
- 6. Micro-USB port
- 7. Battery-charging light
- 8. Power button
- 9. Volume buttons (2)
- 10. Microphone

- 11. MicroSD-card slot
- 12. Speaker
- 13. Service Tag label
- 14. Rear camera

For Proof Only
Dell Confidential

- 1. Headset port
- 2. Windows button
- 3. Camera-status light
- 4. Front camera
- 5. Ambient-light sensor
- 6. Micro-USB port
- 7. Battery-charging light
- 8. Power button
- 9. Volume buttons (2)
- 10. Microphone

- 11. MicroSD-card slot
- 12. Speaker
- 13. Service Tag label
- 14. Rear camera

- 1. Headset port
- 2. Windows button
- 3. Camera-status light
- 4. Front camera
- 5. Ambient-light sensor
- 6. Micro-USB port
- 7. Battery-charging light
- 8. Power button
- 9. Volume buttons (2)
- 10. Microphone

- 11. MicroSD-card slot
- 12. Speaker
- 13. Service Tag label
- 14. Rear camera

Before sending your tablet for repair

Back up your data as Dell may reset your tablet to factory settings to resolve the issue.

Before sending your tablet for repair

Back up your data as Dell may reset your tablet to factory settings to resolve the issue.

Before sending your tablet for repair

Back up your data as Dell may reset your tablet to factory settings to resolve the issue.

Before sending your tablet for repair

Back up your data as Dell may reset your tablet to factory settings to resolve the issue.

Before sending your tablet for repair

Back up your data as Dell may reset your tablet to factory settings to resolve the issue.