

## **System Check\_Body\_2450MHz\_110330**

### **DUT: Dipole 2450 MHz**

Communication System: CW; Frequency: 2450 MHz; Duty Cycle: 1:1

Medium: MSL\_2450\_110330 Medium parameters used:  $f = 2450$  MHz;  $\sigma = 1.96$  mho/m;  $\epsilon_r = 51.5$ ;  $\rho = 1000$

kg/m<sup>3</sup>

Ambient Temperature : 22.4 ; Liquid Temperature : 21.3

#### **DASY5 Configuration:**

- Probe: ET3DV6 - SN1788; ConvF(4.04, 4.04, 4.04); Calibrated: 2010/9/21
- Sensor-Surface: 4mm (Mechanical Surface Detection)
- Electronics: DAE4 Sn778; Calibrated: 2010/10/22
- Phantom: SAM-Back; Type: QD 000 P40 C; Serial: TP-1383
- Measurement SW: DASY5, V5.0 Build 125; SEMCAD X Version 13.4 Build 125

**Pin=100mW/Area Scan (91x91x1):** Measurement grid: dx=10mm, dy=10mm

Maximum value of SAR (interpolated) = 6.79 mW/g

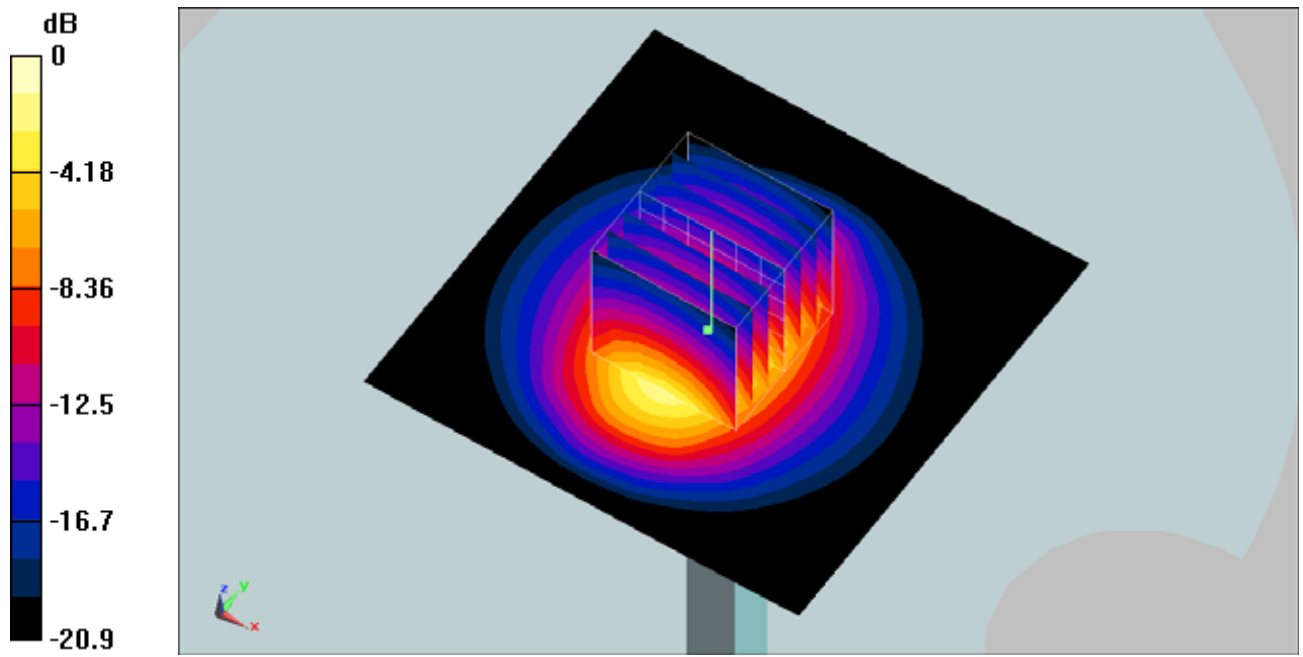
**Pin=100mW/Zoom Scan (7x7x7)/Cube 0:** Measurement grid: dx=5mm, dy=5mm, dz=5mm

Reference Value = 58.5 V/m; Power Drift = -0.196 dB

Peak SAR (extrapolated) = 13.2 W/kg

**SAR(1 g) = 5.7 mW/g; SAR(10 g) = 2.66 mW/g**

Maximum value of SAR (measured) = 6.34 mW/g



0 dB = 6.34mW/g

**System Check\_Body\_5200MHz\_110329**

**DUT: Dipole 5GHz**

Communication System: CW; Frequency: 5200 MHz; Duty Cycle: 1:1

Medium: MSL5G\_110329 Medium parameters used:  $f = 5200$  MHz;  $\sigma = 5.14$  mho/m;  $\epsilon_r = 47.5$ ;  $\rho = 1000$

kg/m<sup>3</sup>

Ambient Temperature : 22.5 ; Liquid Temperature : 21.4

**DASY5 Configuration:**

- Probe: EX3DV4 - SN3731; ConvF(3.87, 3.87, 3.87); Calibrated: 2010/9/20
- Sensor-Surface: 2.5mm (Mechanical Surface Detection)
- Electronics: DAE4 Sn778; Calibrated: 2010/10/22
- Phantom: ELI 4.0; Type: QDOVA001BA; Serial: 1029
- Measurement SW: DASY5, V5.0 Build 125; SEMCAD X Version 13.4 Build 125

**Pin=100mW/Area Scan (91x91x1):** Measurement grid: dx=10mm, dy=10mm

Maximum value of SAR (interpolated) = 13.1 mW/g

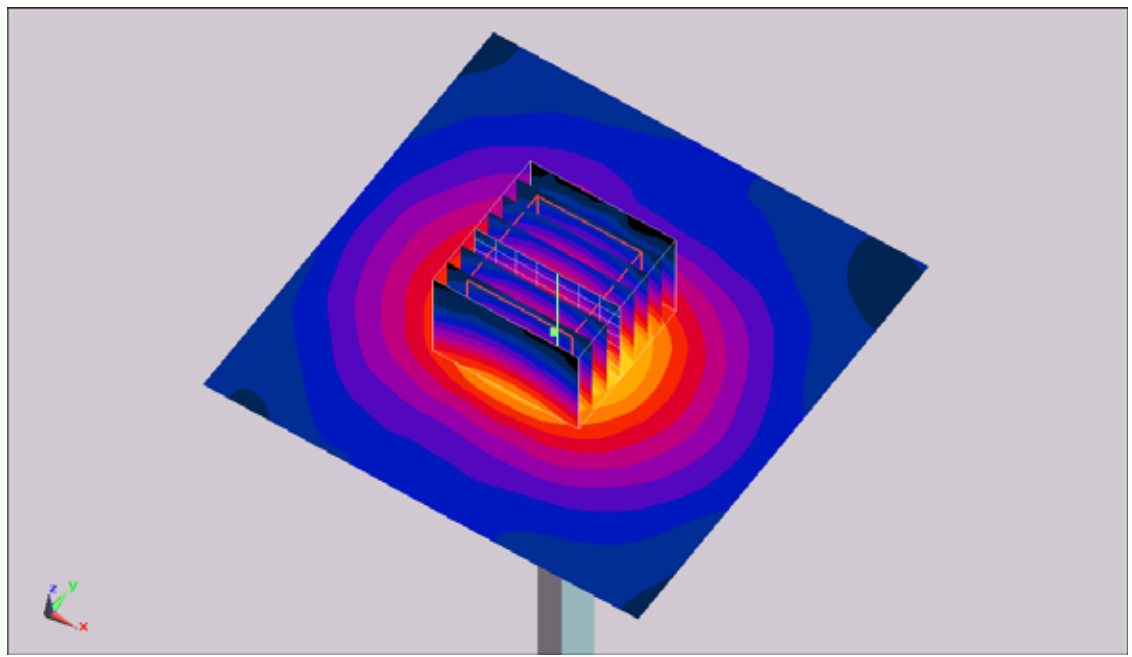
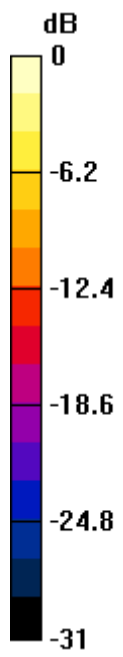
**Pin=100mW/Zoom Scan (8x8x8)/Cube 0:** Measurement grid: dx=4.3mm, dy=4.3mm, dz=3mm

Reference Value = 54.8 V/m; Power Drift = 0.112 dB

Peak SAR (extrapolated) = 20.9 W/kg

**SAR(1 g) = 7.46 mW/g; SAR(10 g) = 2.17 mW/g**

Maximum value of SAR (measured) = 12.2 mW/g



0 dB = 12.2mW/g

## **System Check\_Body\_5500MHz\_110329**

### **DUT: Dipole 5GHz**

Communication System: CW; Frequency: 5500 MHz; Duty Cycle: 1:1

Medium: MSL5G\_110329 Medium parameters used:  $f = 5500$  MHz;  $\sigma = 5.52$  mho/m;  $\epsilon_r = 47$ ;  $\rho = 1000$  kg/m<sup>3</sup>

Ambient Temperature : 22.4 ; Liquid Temperature : 21.4

DASY5 Configuration:

- Probe: EX3DV4 - SN3731; ConvF(3.44, 3.44, 3.44); Calibrated: 2010/9/20
- Sensor-Surface: 2.5mm (Mechanical Surface Detection)
- Electronics: DAE4 Sn778; Calibrated: 2010/10/22
- Phantom: ELI 4.0; Type: QDOVA001BA; Serial: 1029
- Measurement SW: DASY5, V5.0 Build 125; SEMCAD X Version 13.4 Build 125

**Pin=100mW/Area Scan (91x91x1):** Measurement grid: dx=10mm, dy=10mm

Maximum value of SAR (interpolated) = 15.4 mW/g

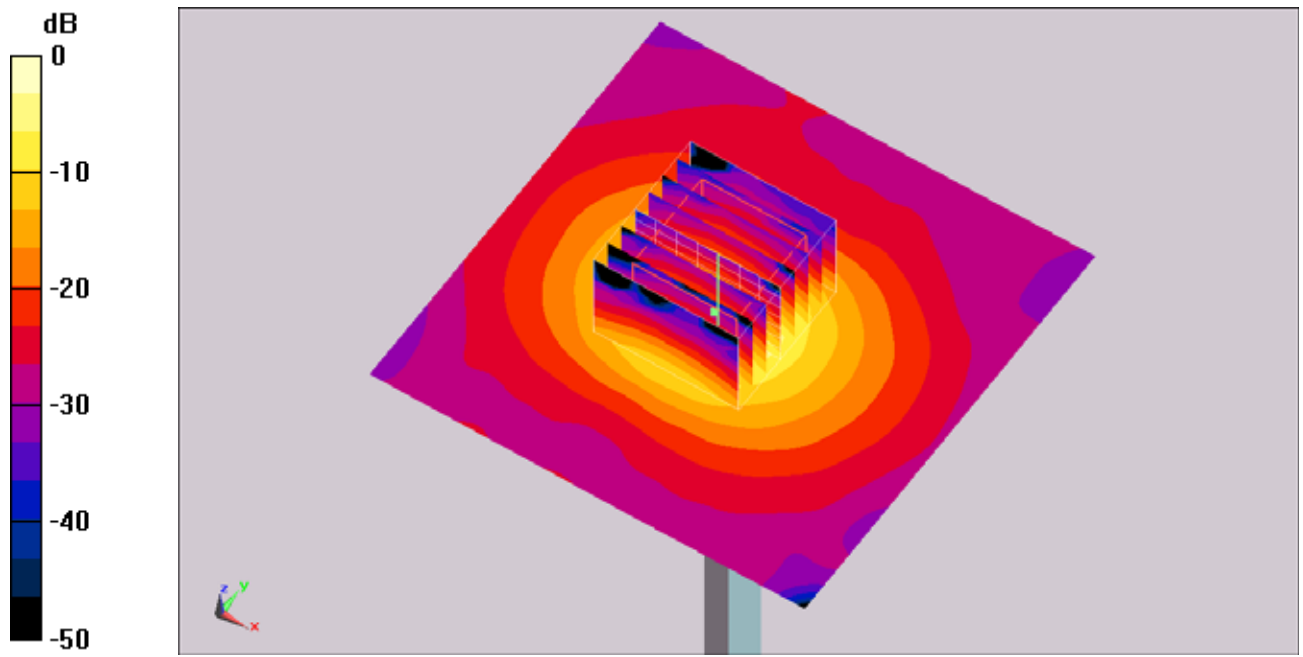
**Pin=100mW/Zoom Scan (8x8x8)/Cube 0:** Measurement grid: dx=4.3mm, dy=4.3mm, dz=3mm

Reference Value = 58.6 V/m; Power Drift = 0.156 dB

Peak SAR (extrapolated) = 27.9 W/kg

**SAR(1 g) = 8.81 mW/g; SAR(10 g) = 2.47 mW/g**

Maximum value of SAR (measured) = 15.6 mW/g



0 dB = 15.6mW/g

## **System Check\_Body\_5800MHz\_110329**

### **DUT: Dipole 5GHz**

Communication System: CW; Frequency: 5800 MHz; Duty Cycle: 1:1

Medium: MSL5G\_110329 Medium parameters used:  $f = 5800$  MHz;  $\sigma = 5.99$  mho/m;  $\epsilon_r = 46.5$ ;  $\rho = 1000$

kg/m<sup>3</sup>

Ambient Temperature : 22.6 ; Liquid Temperature : 21.4

#### **DASY5 Configuration:**

- Probe: EX3DV4 - SN3731; ConvF(3.55, 3.55, 3.55); Calibrated: 2010/9/20
- Sensor-Surface: 2.5mm (Mechanical Surface Detection)
- Electronics: DAE4 Sn778; Calibrated: 2010/10/22
- Phantom: ELI 4.0; Type: QDOVA001BA; Serial: 1029
- Measurement SW: DASY5, V5.0 Build 125; SEMCAD X Version 13.4 Build 125

**Pin=100mW/Area Scan (91x91x1):** Measurement grid: dx=10mm, dy=10mm

Maximum value of SAR (interpolated) = 12.7 mW/g

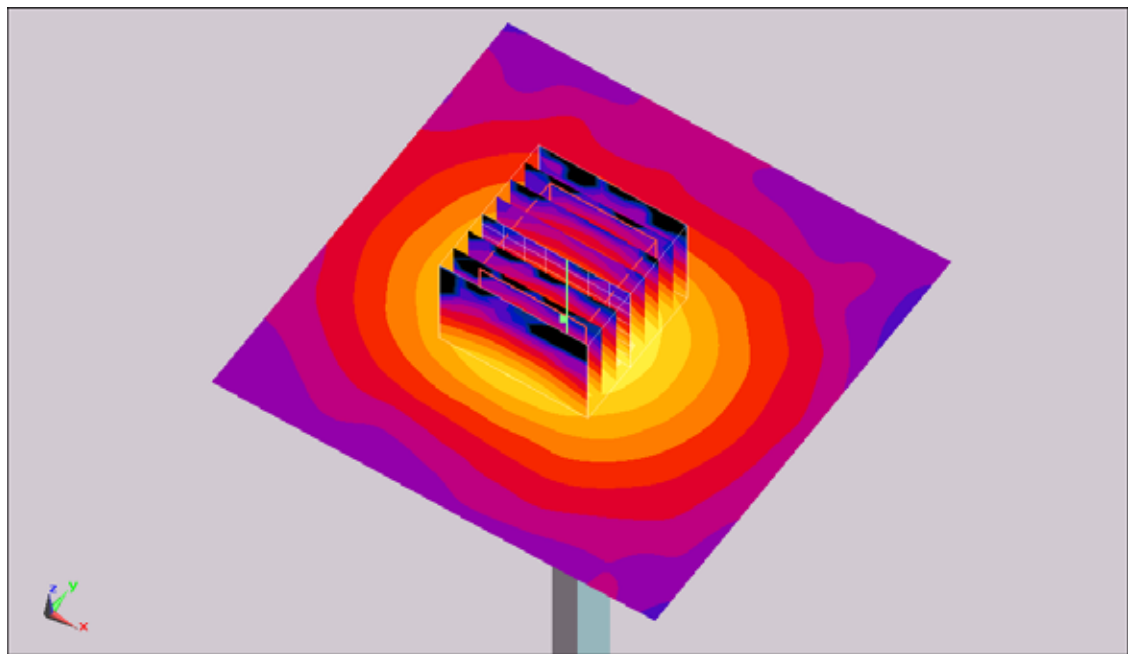
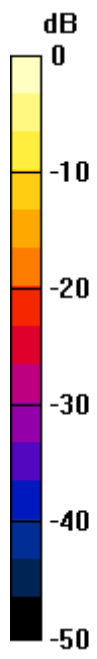
**Pin=100mW/Zoom Scan (8x8x8)/Cube 0:** Measurement grid: dx=4.3mm, dy=4.3mm, dz=3mm

Reference Value = 50.7 V/m; Power Drift = 0.112 dB

Peak SAR (extrapolated) = 25.2 W/kg

**SAR(1 g) = 7.27 mW/g; SAR(10 g) = 2.03 mW/g**

Maximum value of SAR (measured) = 12.8 mW/g



0 dB = 12.8mW/g