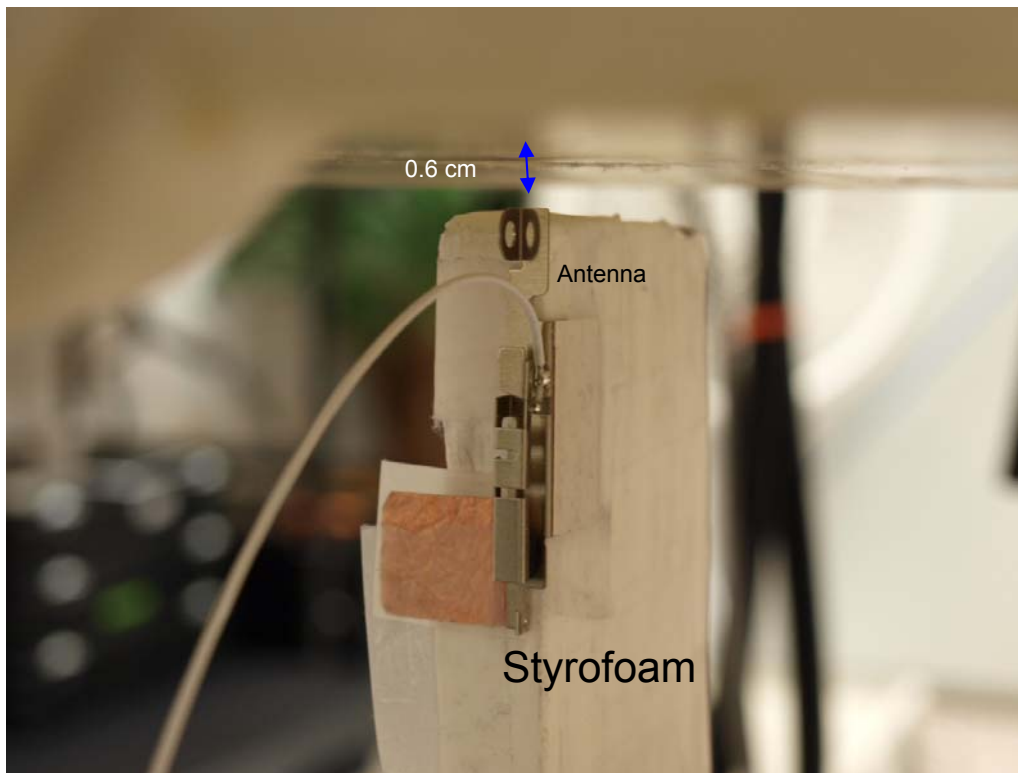


11. SUMMARY OF SAR TEST RESULTS

11.1. PIFA ANTENNA

11.1.1. Antenna Vertical Up



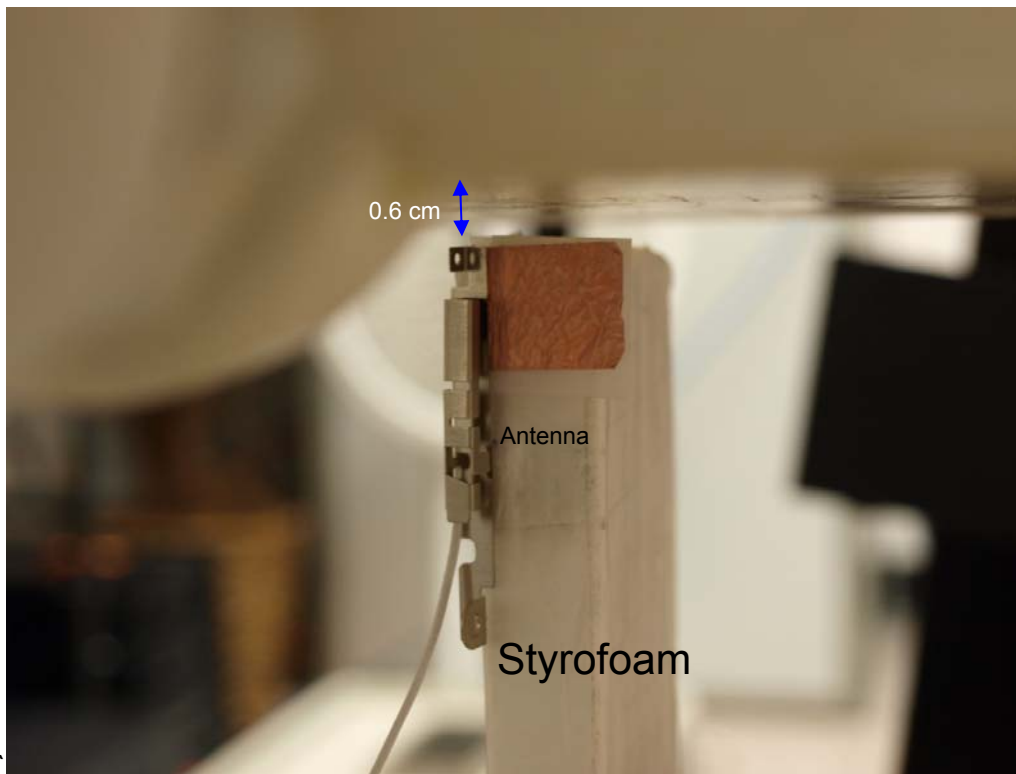
Test result

Configuration	Mode	Channel	f (MHz)	Avg Pwr	Results (mW/g)	
				(dBm)	1g-SAR	10g-SAR
Antenna Vertical Up	802.11b (1x1)	1	2412	14.1		
		6	2437	15.0	0.027	0.015
		11	2462	14.9		

Notes:

1. SAR tested on the highest output power channel.
2. This module is not capable of single antenna transmitting mode in either b/g/H20/H40
3. According to KDB 248227. SAR is not required for 802.11g/HT20/HT40 channels when the maximum average output power is less than 1/4 dB higher than that measured on the corresponding 802.11b channels.

11.1.2. Antenna Vertical Down



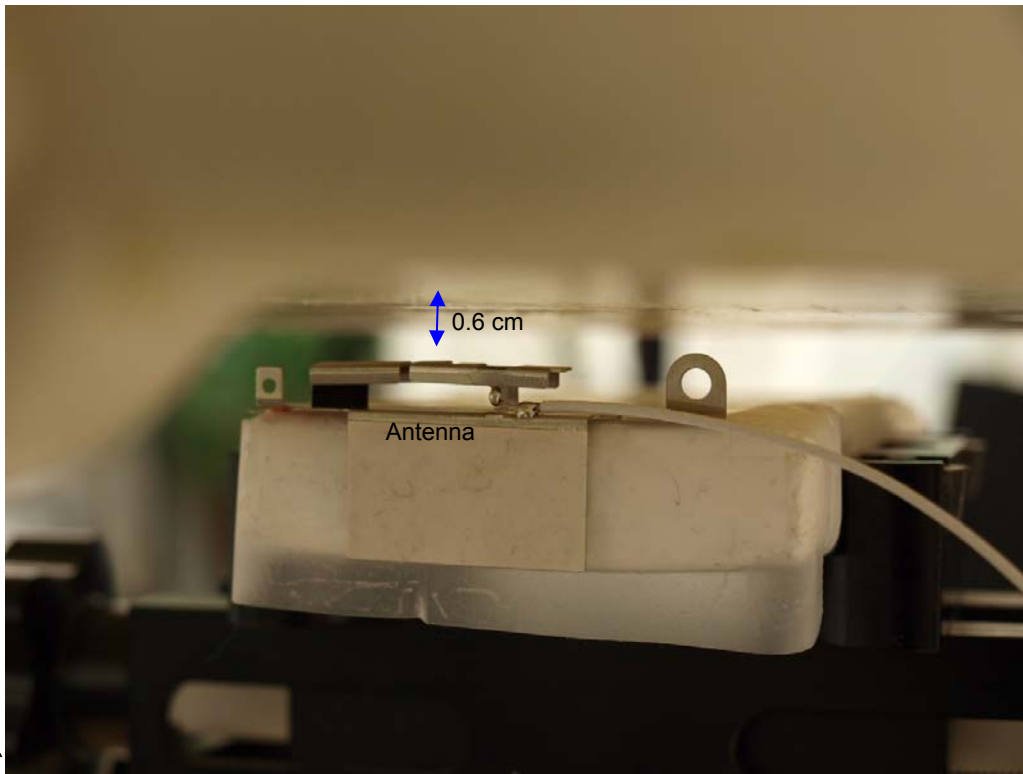
Test result

Configuration	Mode	Channel	f (MHz)	Avg Pwr	Results (mW/g)	
				(dBm)	1g-SAR	10g-SAR
Antenna Vertical Down	802.11b (1x1)	1	2412	14.1		
		6	2437	15.0	0.048	0.023
		11	2462	14.9		

Notes:

1. SAR tested on the highest output power channel.
2. This module is not capable of single antenna transmitting mode in either b/g/H20/H40
3. According to KDB 248227. SAR is not required for 802.11g/HT20/HT40 channels when the maximum average output power is less than 1/4 dB higher than that measured on the corresponding 802.11b channels.

11.1.3. Antenna Horizontal Up



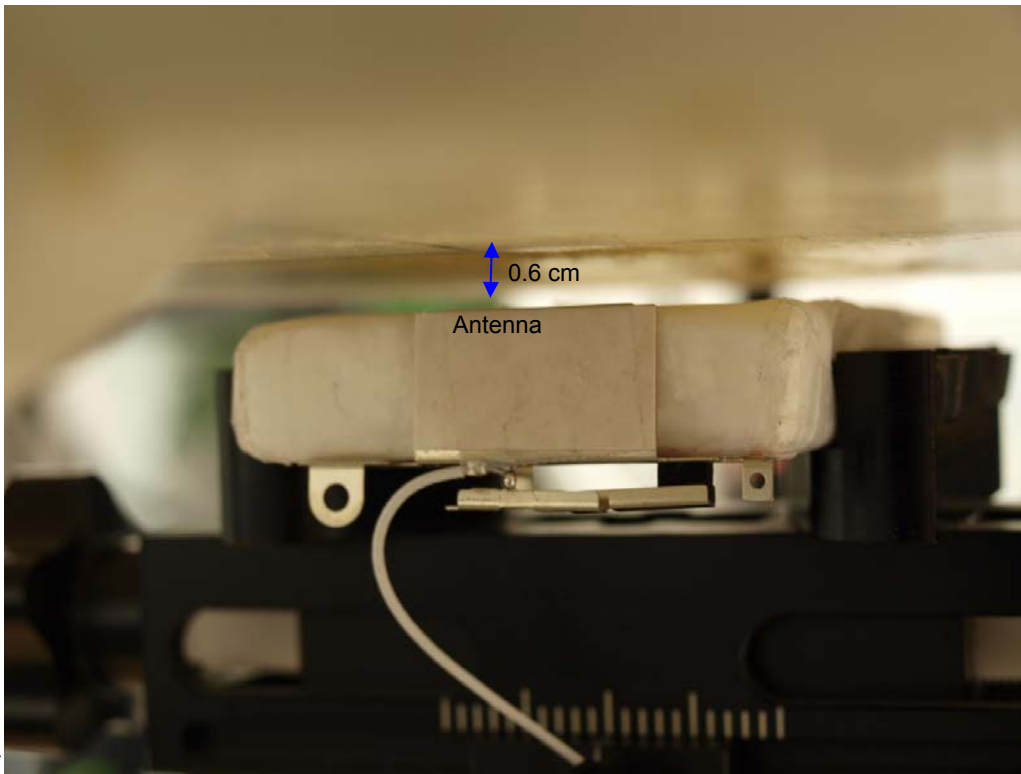
Test result

Configuration	Mode	Channel	f (MHz)	Avg Pwr	Results (mW/g)	
				(dBm)	1g-SAR	10g-SAR
Antenna Horizontal Up	802.11b (1x1)	1	2412	14.1		
		6	2437	15.0	0.273	0.121
		11	2462	14.9		

Notes:

1. SAR tested on the highest output power channel.
2. This module is not capable of single antenna transmitting mode in either b/g/H20/H40
3. According to KDB 248227. SAR is not required for 802.11g/HT20/HT40 channels when the maximum average output power is less than 1/4 dB higher than that measured on the corresponding 802.11b channels.

11.1.4. Antenna Horizontal Down



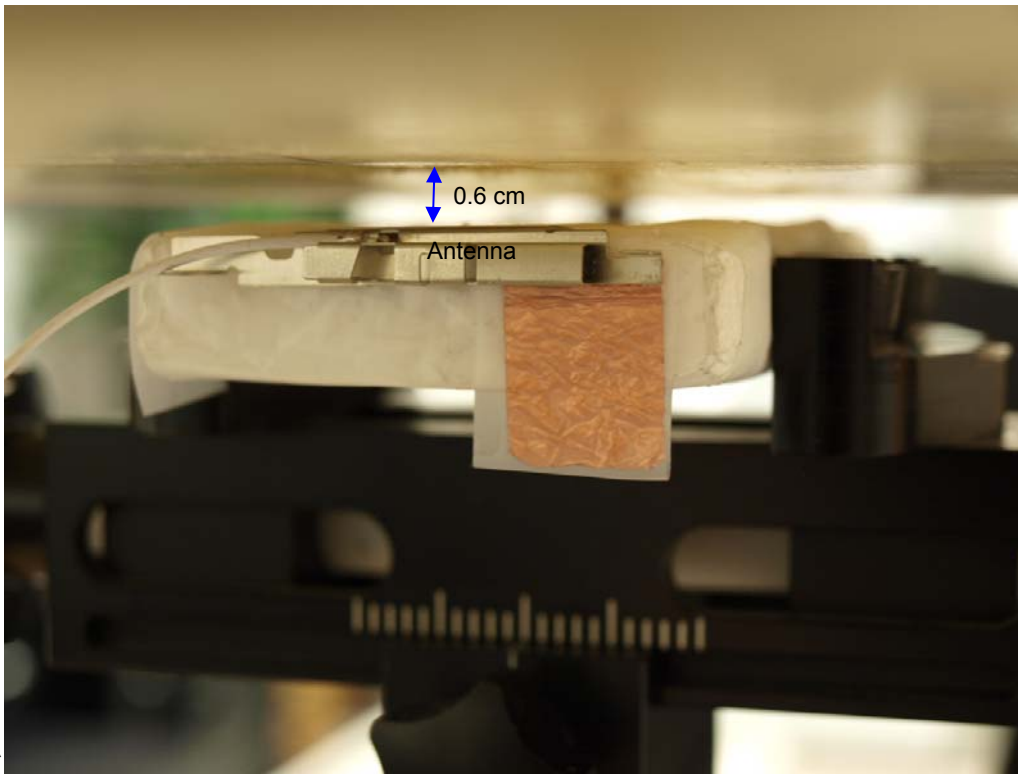
Test result

Configuration	Mode	Channel	f (MHz)	Avg Pwr	Results (mW/g)	
				(dBm)	1g-SAR	10g-SAR
Antenna Horizontal Down	802.11b (1x1)	1	2412	14.1		
		6	2437	15.0	0.029	0.016
		11	2462	14.9		

Notes:

1. SAR tested on the highest output power channel.
2. This module is not capable of single antenna transmitting mode in either b/g/H20/H40
3. According to KDB 248227. SAR is not required for 802.11g/HT20/HT40 channels when the maximum average output power is less than 1/4 dB higher than that measured on the corresponding 802.11b channels.

11.1.5. Antenna Horizontal Front



Test result

Configuration	Mode	Channel	f (MHz)	Avg Pwr	Results (mW/g)	
				(dBm)	1g-SAR	10g-SAR
Antenna Horizontal Front	802.11b (1x1)	1	2412	14.1		
		6	2437	15.0	0.313	0.136
		11	2462	14.9		

Notes:

1. SAR tested on the highest output power channel.
2. This module is not capable of single antenna transmitting mode in either b/g/H20/H40
3. According to KDB 248227. SAR is not required for 802.11g/HT20/HT40 channels when the maximum average output power is less than 1/4 dB higher than that measured on the corresponding 802.11b channels.

11.1.6. Antenna Horizontal Back (Worst-case)



Test result

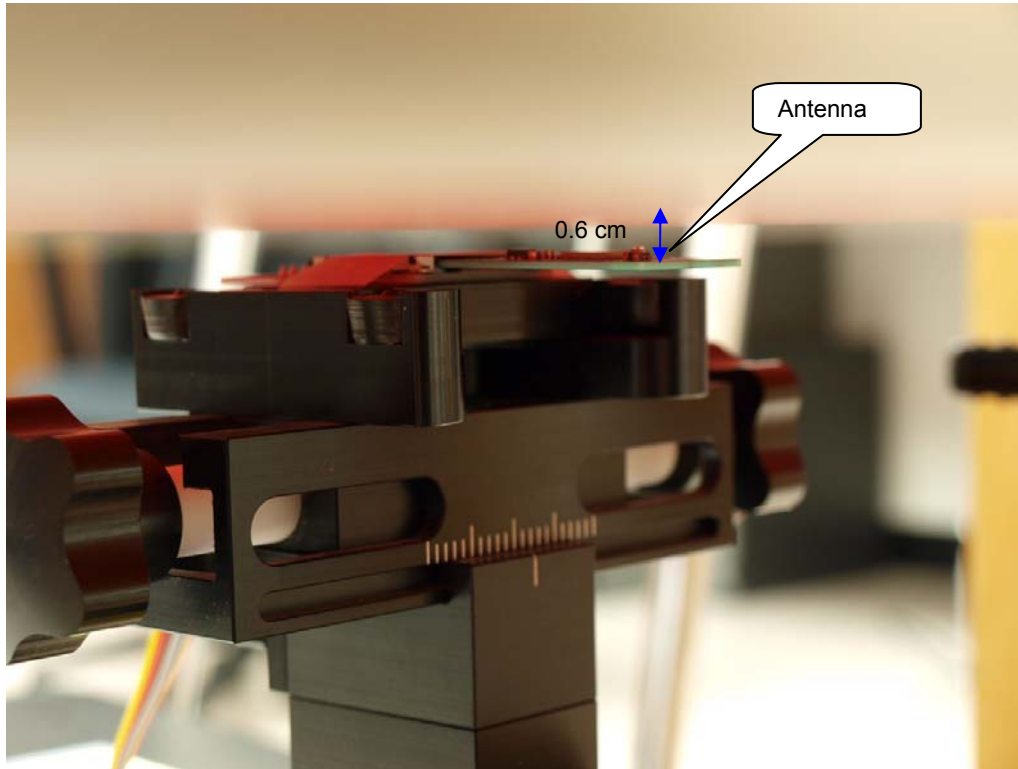
Configuration	Mode	Channel	f (MHz)	Avg Pwr	Results (mW/g)	
				(dBm)	1g-SAR	10g-SAR
Antenna Horizontal Back	802.11b (1x1)	1	2412	14.1		
		6	2437	15.0	0.389	0.172
		11	2462	14.9		

Notes:

1. SAR tested on the highest output power channel.
2. This module is not capable of single antenna transmitting mode in either b/g/H20/H40
3. According to KDB 248227. SAR is not required for 802.11g/HT20/HT40 channels when the maximum average output power is less than 1/4 dB higher than that measured on the corresponding 802.11b channels.

11.2. PRINT ANTENNA

11.2.1. Antenna Horizontal Up (Worst-case)



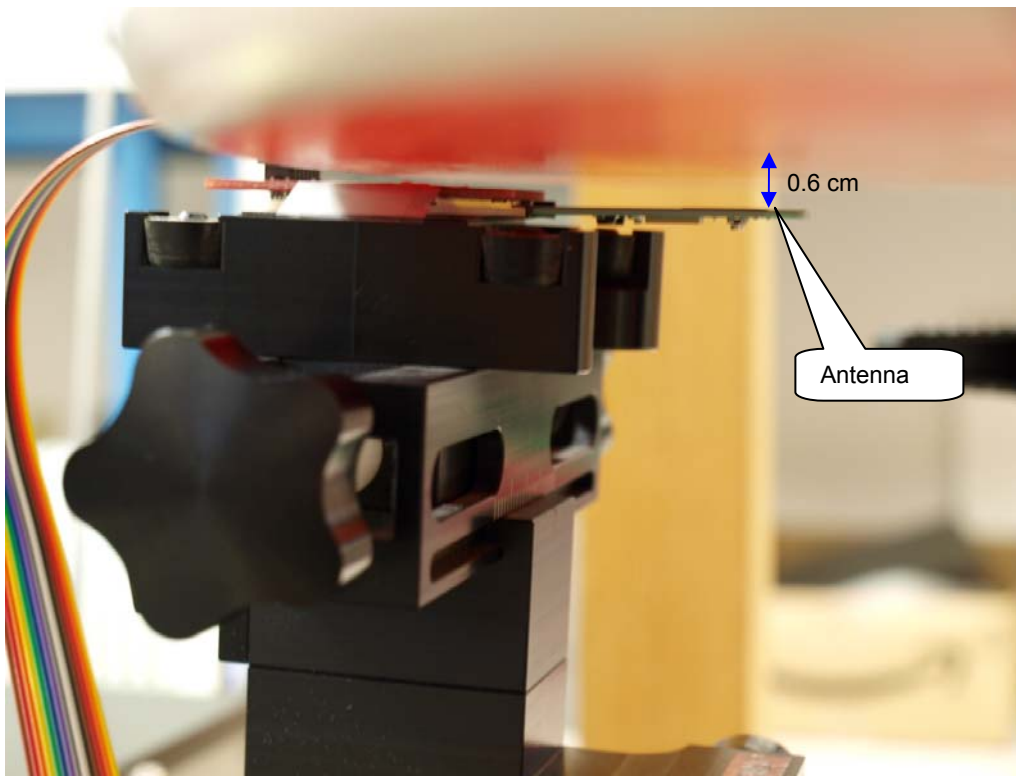
Test result

Configuration	Mode	Channel	f (MHz)	Avg Pwr	Results (mW/g)	
				(dBm)	1g-SAR	10g-SAR
Antenna Horizontal Up	802.11b (1x1)	1	2412	14.1		
		6	2437	15.0	0.136	0.059
		11	2462	14.9		

Notes:

1. SAR tested on the highest output power channel.
2. This module is not capable of single antenna transmitting mode in either b/g/H20/H40
3. According to KDB 248227. SAR is not required for 802.11g/HT20/HT40 channels when the maximum average output power is less than 1/4 dB higher than that measured on the corresponding 802.11b channels.

11.2.2. Antenna Horizontal Down



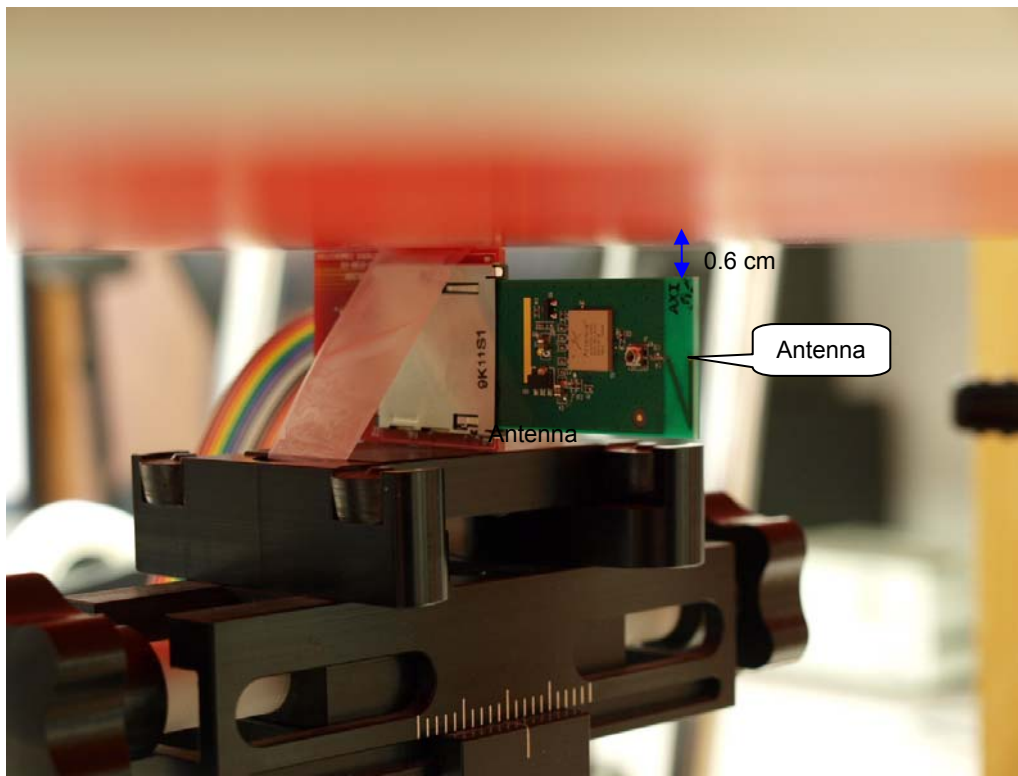
Test result

Configuration	Mode	Channel	f (MHz)	Avg Pwr	Results (mW/g)	
				(dBm)	1g-SAR	10g-SAR
Antenna Horizontal Down	802.11b (1x1)	1	2412	14.1		
		6	2437	15.0	0.118	0.049
		11	2462	14.9		

Notes:

1. SAR tested on the highest output power channel.
2. This module is not capable of single antenna transmitting mode in either b/g/H20/H40
3. According to KDB 248227. SAR is not required for 802.11g/HT20/HT40 channels when the maximum average output power is less than 1/4 dB higher than that measured on the corresponding 802.11b channels.

11.2.3. Antenna Left Edge



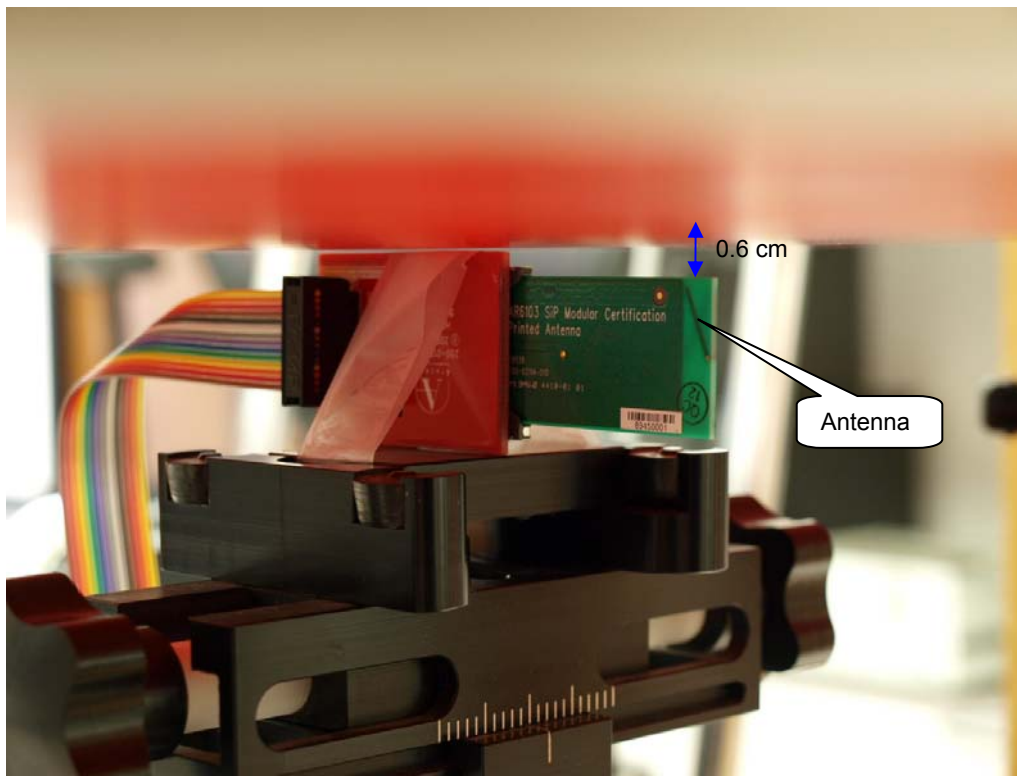
Test result

Configuration	Mode	Channel	f (MHz)	Avg Pwr	Results (mW/g)	
				(dBm)	1g-SAR	10g-SAR
Antenna Left Edge	802.11b (1x1)	1	2412	14.1		
		6	2437	15.0	0.063	0.028
		11	2462	14.9		

Notes:

1. SAR tested on the highest output power channel.
2. This module is not capable of single antenna transmitting mode in either b/g/H20/H40
3. According to KDB 248227. SAR is not required for 802.11g/HT20/HT40 channels when the maximum average output power is less than 1/4 dB higher than that measured on the corresponding 802.11b channels.

11.2.4. Antenna Right Edge



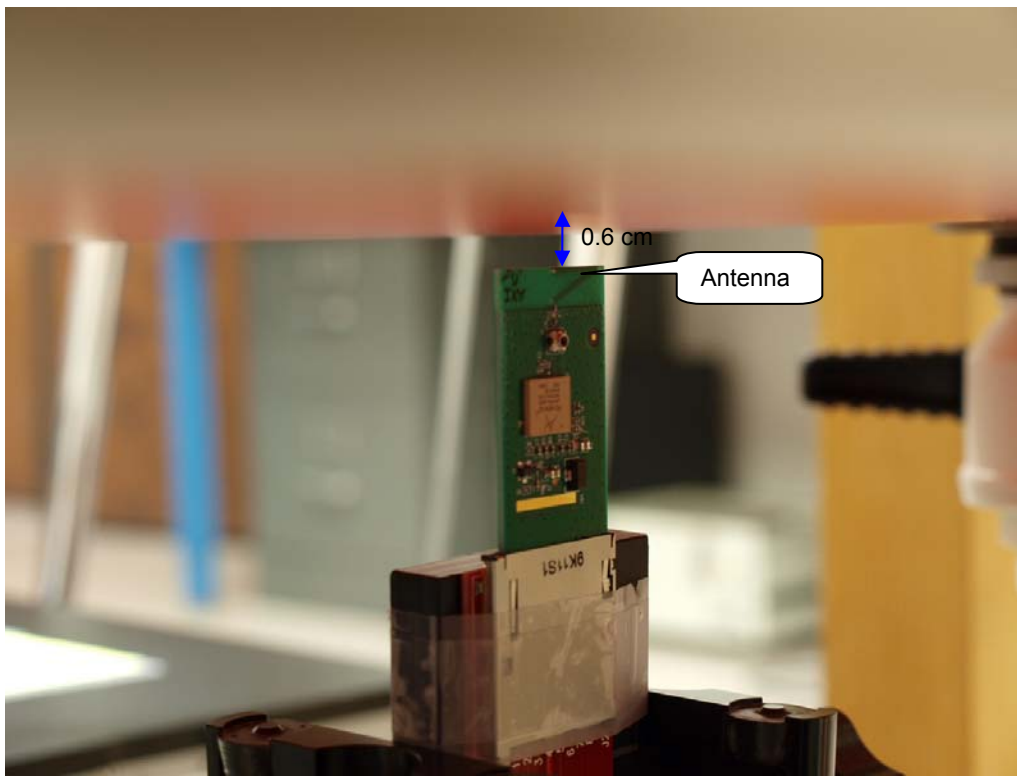
Test result

Configuration	Mode	Channel	f (MHz)	Avg Pwr	Results (mW/g)	
				(dBm)	1g-SAR	10g-SAR
Antenna Right Edge	802.11b (1x1)	1	2412	14.1		
		6	2437	15.0	0.110	0.048
		11	2462	14.9		

Notes:

1. SAR tested on the highest output power channel.
2. This module is not capable of single antenna transmitting mode in either b/g/H20/H40
3. According to KDB 248227. SAR is not required for 802.11g/HT20/HT40 channels when the maximum average output power is less than 1/4 dB higher than that measured on the corresponding 802.11b channels.

11.2.5. Antenna Tip



Test result

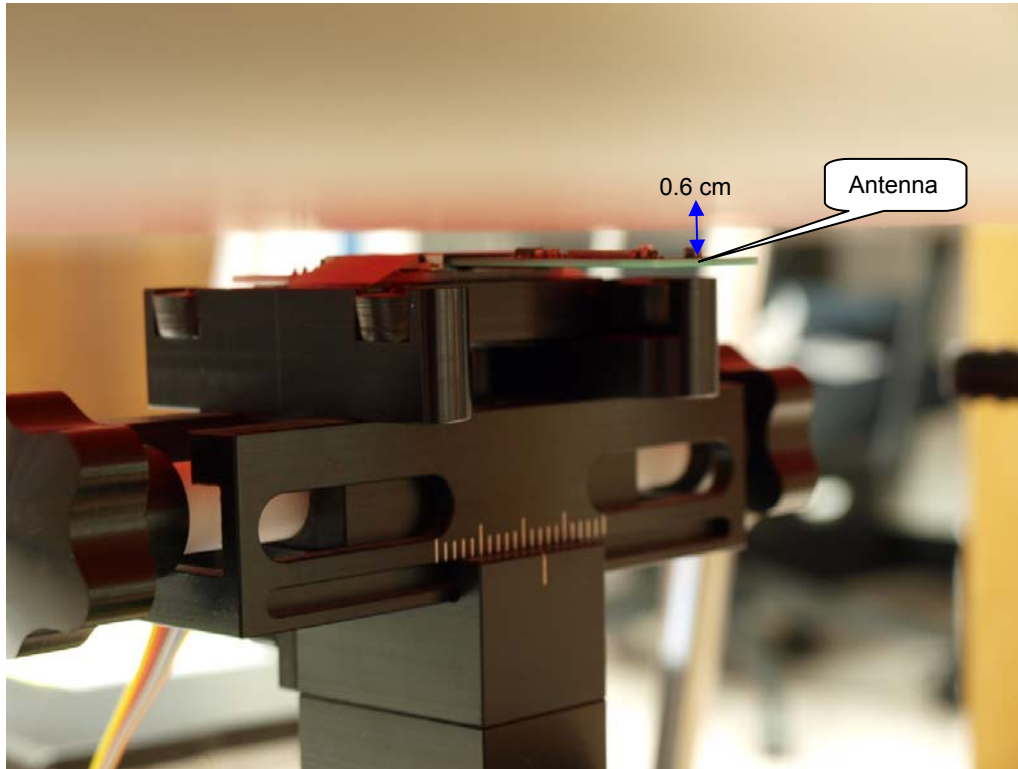
Configuration	Mode	Channel	f (MHz)	Avg Pwr	Results (mW/g)	
				(dBm)	1g-SAR	10g-SAR
Antenna Tip	802.11b (1x1)	1	2412	14.1		
		6	2437	15.0	0.020	0.0084
		11	2462	14.9		

Notes:

1. SAR tested on the highest output power channel.
2. This module is not capable of single antenna transmitting mode in either b/g/H20/H40
3. According to KDB 248227. SAR is not required for 802.11g/HT20/HT40 channels when the maximum average output power is less than 1/4 dB higher than that measured on the corresponding 802.11b channels.

11.3. CHIP ANTENNA

11.3.1. Antenna Horizontal Up (Worst-case)



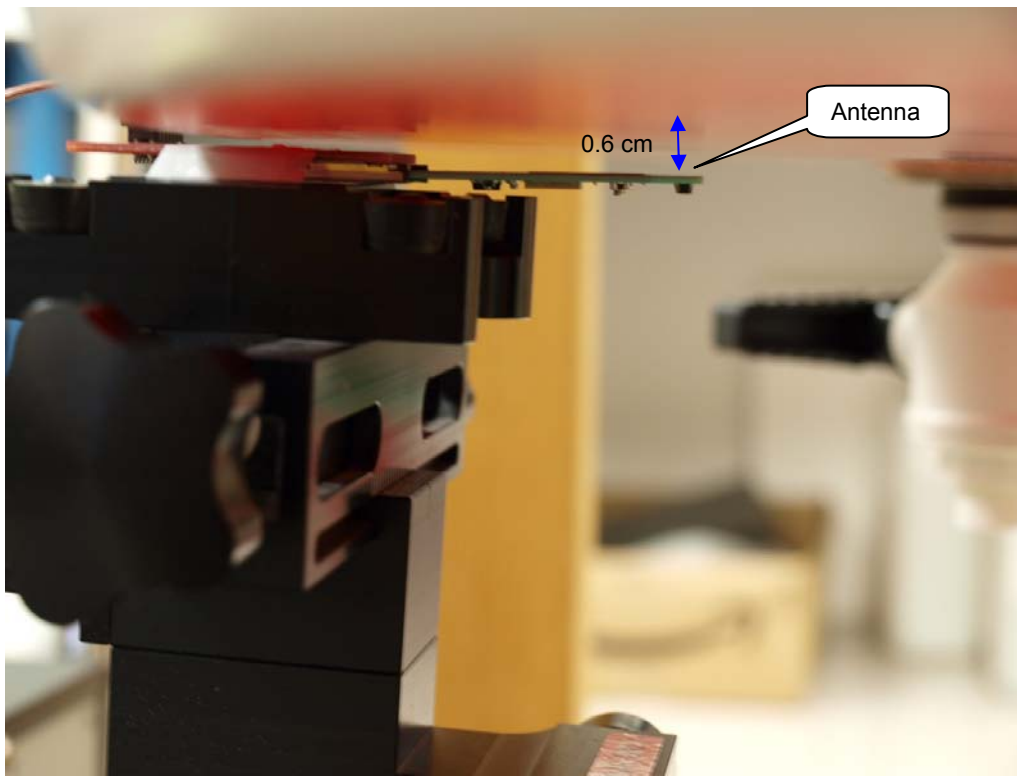
Test result

Configuration	Mode	Channel	f (MHz)	Avg Pwr	Results (mW/g)	
				(dBm)	1g-SAR	10g-SAR
Antenna Horizontal Up	802.11b (1x1)	1	2412	14.1		
		6	2437	15.0	0.00914	0.00183
		11	2462	14.9		

Notes:

1. SAR tested on the highest output power channel.
2. This module is not capable of single antenna transmitting mode in either b/g/H20/H40
3. According to KDB 248227. SAR is not required for 802.11g/HT20/HT40 channels when the maximum average output power is less than 1/4 dB higher than that measured on the corresponding 802.11b channels.

11.3.2. Antenna Horizontal Down



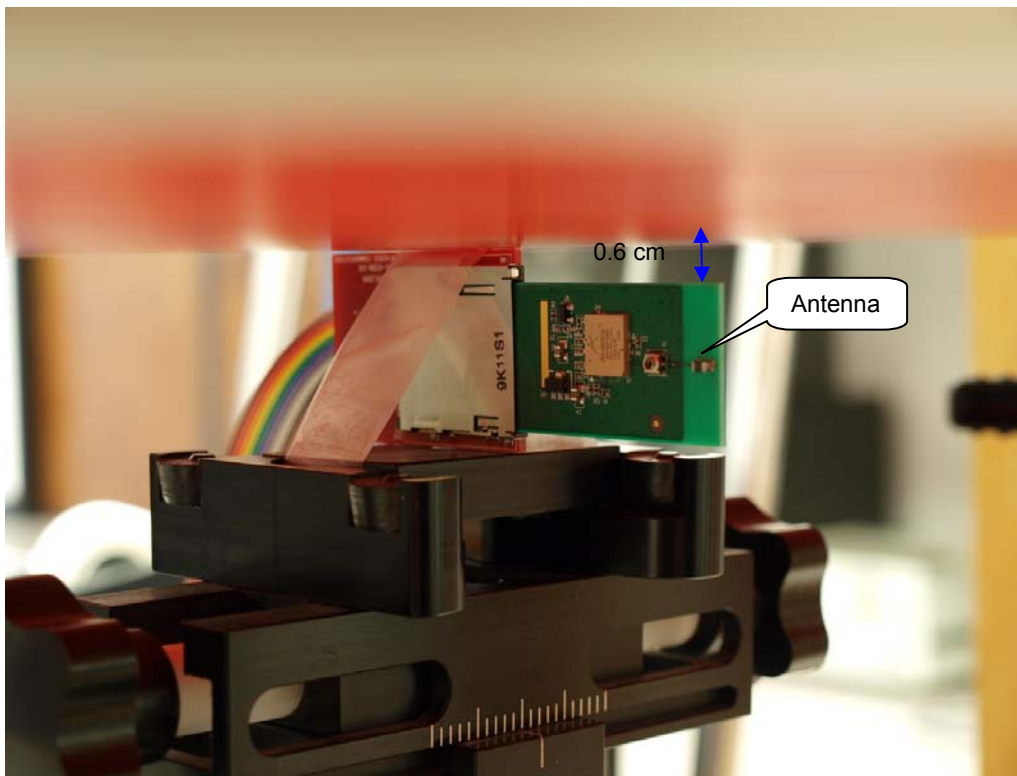
Test result

Configuration	Mode	Channel	f (MHz)	Avg Pwr	Results (mW/g)	
				(dBm)	1g-SAR	10g-SAR
Antenna Horizontal Down	802.11b (1x1)	1	2412	14.1		
		6	2437	15.0	0.00264	0.00108
		11	2462	14.9		

Notes:

1. SAR tested on the highest output power channel.
2. This module is not capable of single antenna transmitting mode in either b/g/H20/H40
3. According to KDB 248227. SAR is not required for 802.11g/HT20/HT40 channels when the maximum average output power is less than 1/4 dB higher than that measured on the corresponding 802.11b channels.

11.3.3. Antenna Left edge



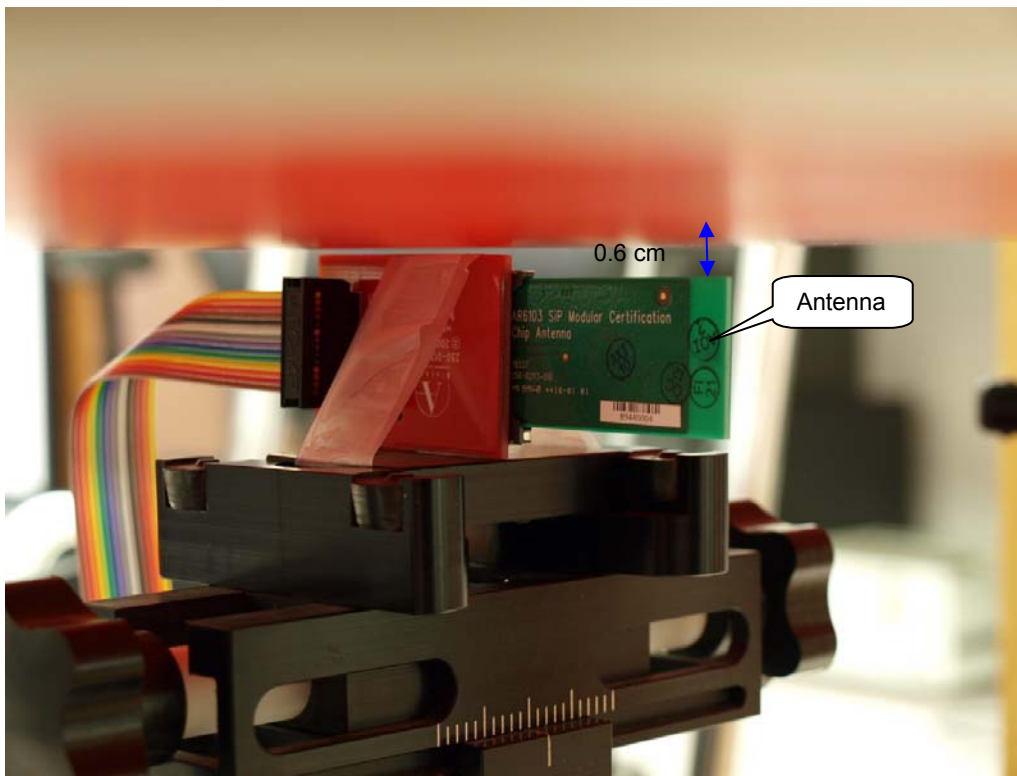
Test result

Configuration	Mode	Channel	f (MHz)	Avg Pwr	Results (mW/g)	
				(dBm)	1g-SAR	10g-SAR
Antenna Left edge	802.11b (1x1)	1	2412	14.1		
		6	2437	15.0	0.00249	0.000897
		11	2462	14.9		

Notes:

1. SAR tested on the highest output power channel.
2. This module is not capable of single antenna transmitting mode in either b/g/H20/H40
3. According to KDB 248227. SAR is not required for 802.11g/HT20/HT40 channels when the maximum average output power is less than 1/4 dB higher than that measured on the corresponding 802.11b channels.

11.3.4. Antenna Right edge



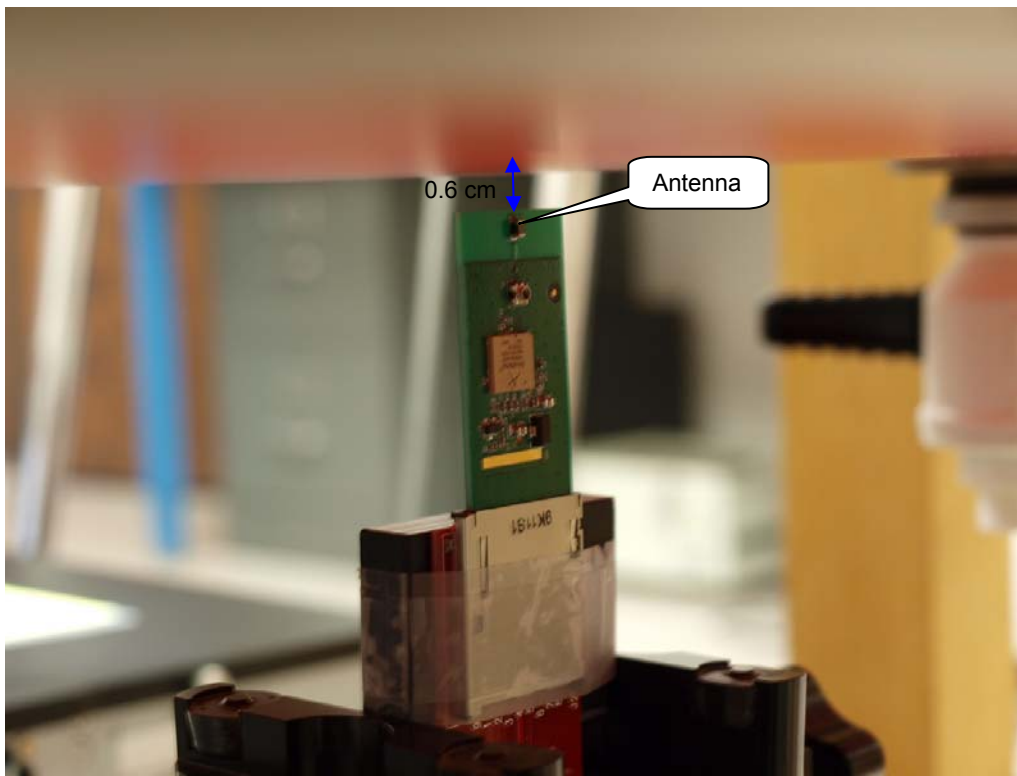
Test result

Configuration	Mode	Channel	f (MHz)	Avg Pwr	Results (mW/g)	
				(dBm)	1g-SAR	10g-SAR
Antenna Right edge	802.11b (1x1)	1	2412	14.1		
		6	2437	15.0	0.00121	0.000253
		11	2462	14.9		

Notes:

1. SAR tested on the highest output power channel.
2. This module is not capable of single antenna transmitting mode in either b/g/H20/H40
3. According to KDB 248227. SAR is not required for 802.11g/HT20/HT40 channels when the maximum average output power is less than 1/4 dB higher than that measured on the corresponding 802.11b channels.

11.3.5. Antenna Tip



Test result

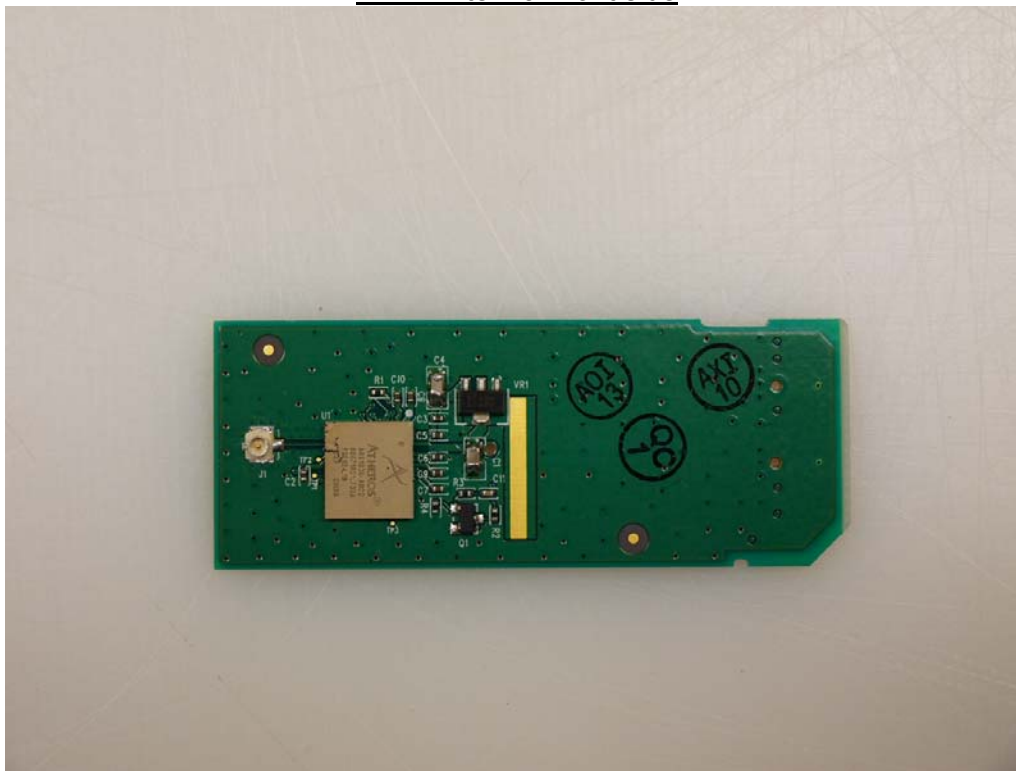
Configuration	Mode	Channel	f (MHz)	Avg Pwr	Results (mW/g)	
				(dBm)	1g-SAR	10g-SAR
Antenna Tip	802.11b (1x1)	1	2412	14.1		
		6	2437	15.0	0.000174	N/A
		11	2462	14.9		

Notes:

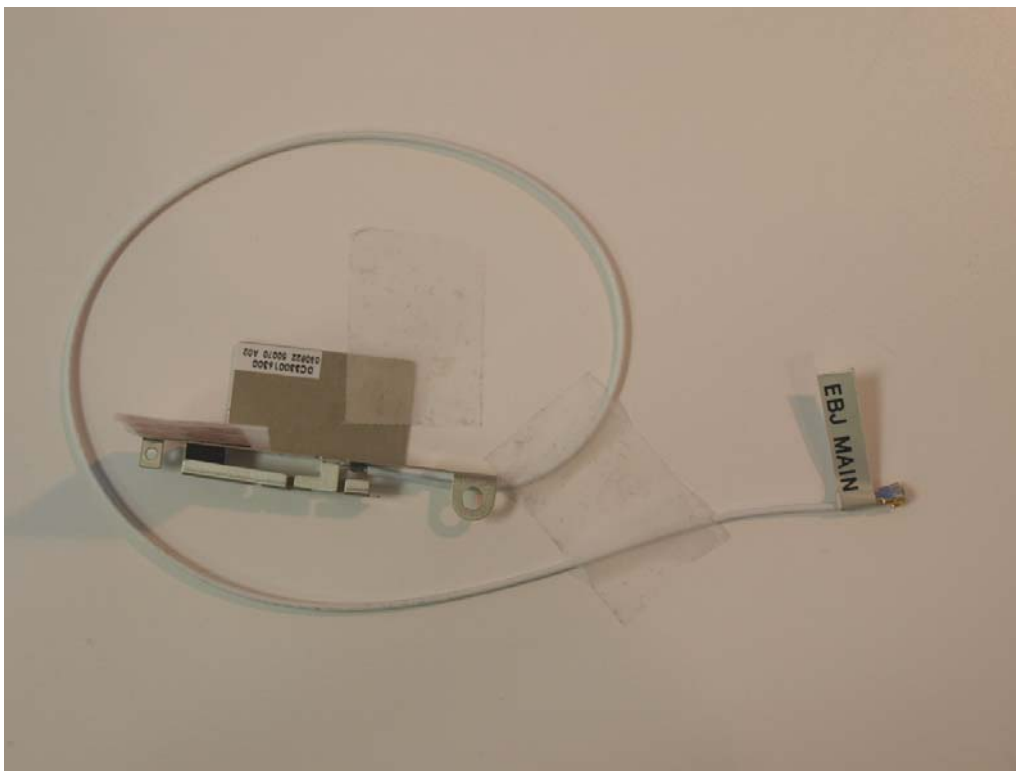
1. SAR tested on the highest output power channel.
2. This module is not capable of single antenna transmitting mode in either b/g/H20/H40
3. According to KDB 248227. SAR is not required for 802.11g/HT20/HT40 channels when the maximum average output power is less than 1/4 dB higher than that measured on the corresponding 802.11b channels.

14. EXTERNAL PHOTOS

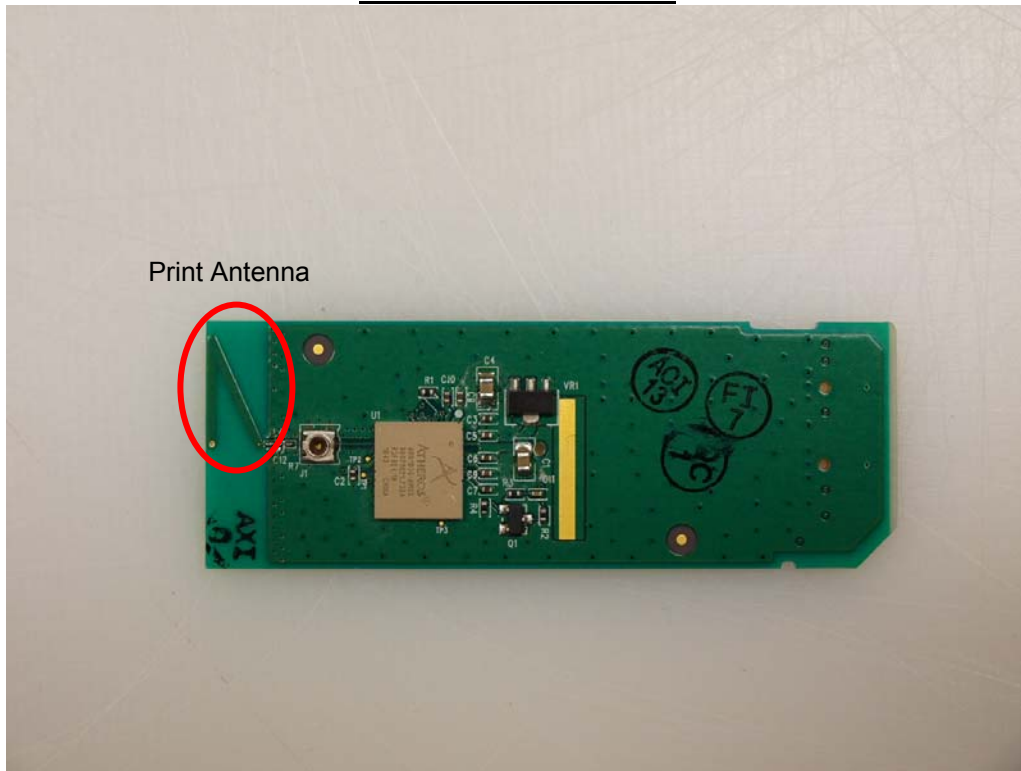
PIFA Antenna Front side



PIFA Antenna



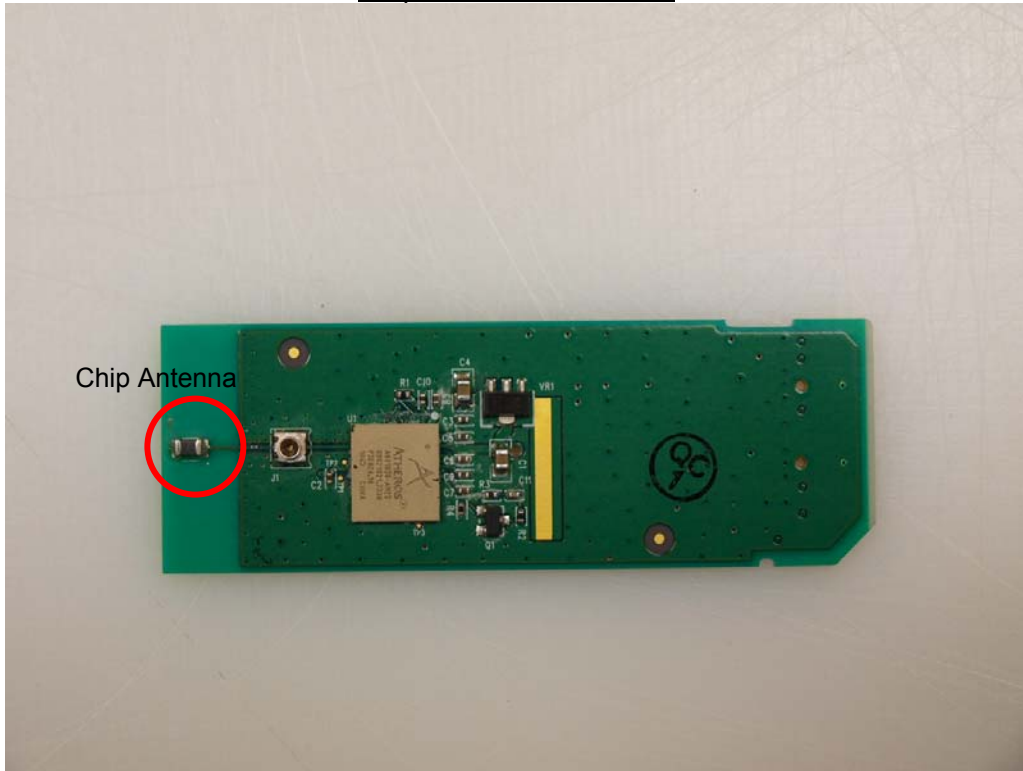
Print Antenna Front side



Print Antenna Back side



Chip Antenna Front side



Chip Antenna Back side



END OF REPORT