

Test Laboratory: Compliance Certification Services

LAP Held Position - Main Antenna

DUT: DL Note Tablet; Type: Laptop; Serial: N/A

Communication System: 5200 band; Frequency: 5260 MHz; Duty Cycle: 1:1

Medium parameters used (interpolated): $f = 5260$ MHz; $\sigma = 5.55$ mho/m; $\epsilon_r = 50.7$; $\rho = 1000$ kg/m³

Phantom section: Flat Section

Room Ambient Temperature: 24.0deg. C; Liquid Temperature: 23.0 deg. C

DASY4 Configuration:

- Area Scan setting - Find Secondary Maximum Within: 2.0 dB and with a peak SAR value greater than 0.0012W/kg
- Probe: EX3DV4 - SN3552; ConvF(4.07, 4.07, 4.07); Calibrated: 5/30/2006
- Sensor-Surface: 2mm (Mechanical Surface Detection)
- Electronics: DAE4 SN558; Calibrated: 1/20/2006
- Phantom: SAM 1; Type: SAM 1; Serial: 1185
- Measurement SW: DASY4, V4.7 Build 44; Postprocessing SW: SEMCAD, V1.8 Build 171

a mode M ch/Area Scan (10x11x1): Measurement grid: dx=10mm, dy=10mm

[Info: Interpolated medium parameters used for SAR evaluation.](#)

Maximum value of SAR (measured) = 0.113 mW/g

a mode M ch/Zoom Scan (7x7x9)/Cube 0: Measurement grid: dx=4mm, dy=4mm, dz=2.5mm

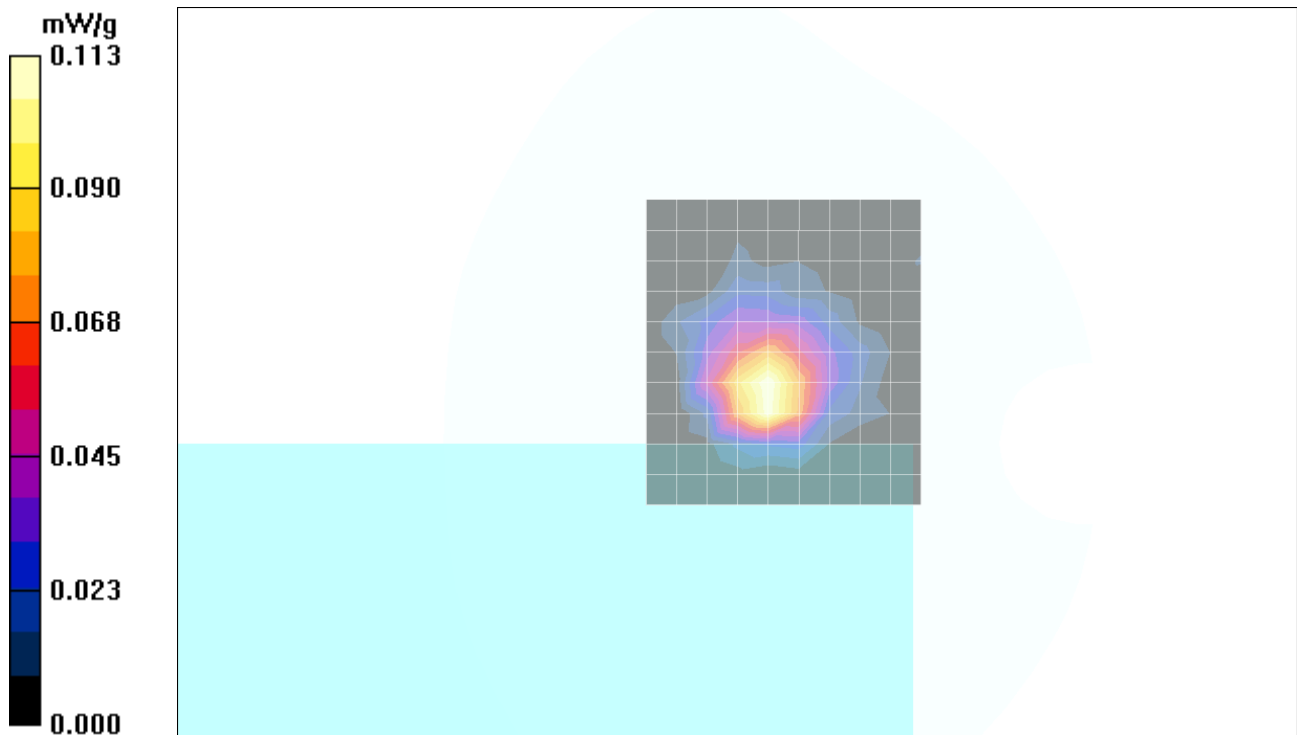
Reference Value = 4.97 V/m; Power Drift = -0.119 dB

Peak SAR (extrapolated) = 0.231 W/kg

SAR(1 g) = 0.064 mW/g; SAR(10 g) = 0.024 mW/g

[Info: Interpolated medium parameters used for SAR evaluation.](#)

Maximum value of SAR (measured) = 0.128 mW/g



Test Laboratory: Compliance Certification Services

LAP Held Position - Main Antenna

DUT: DL Note Tablet; Type: Laptop; Serial: N/A

Communication System: 5200 band; Frequency: 5260 MHz; Duty Cycle: 1:1

Medium parameters used (interpolated): $f = 5260$ MHz; $\sigma = 5.55$ mho/m; $\epsilon_r = 50.7$; $\rho = 1000$ kg/m³

Phantom section: Flat Section

Room Ambient Temperature: 24.0deg. C; Liquid Temperature: 23.0 deg. C

DASY4 Configuration:

- Area Scan setting - Find Secondary Maximum Within: 2.0 dB and with a peak SAR value greater than 0.0012W/kg
- Probe: EX3DV4 - SN3552; ConvF(4.07, 4.07, 4.07); Calibrated: 5/30/2006
- Sensor-Surface: 2mm (Mechanical Surface Detection)
- Electronics: DAE4 SN558; Calibrated: 1/20/2006
- Phantom: SAM 1; Type: SAM 1; Serial: 1185
- Measurement SW: DASY4, V4.7 Build 44; Postprocessing SW: SEMCAD, V1.8 Build 171

HT20 mode M ch/Area Scan (10x11x1): Measurement grid: dx=10mm, dy=10mm

[Info: Interpolated medium parameters used for SAR evaluation.](#)

Maximum value of SAR (measured) = 0.454 mW/g

HT20 mode M ch/Zoom Scan (7x7x9)/Cube 0: Measurement grid: dx=4mm, dy=4mm, dz=2.5mm

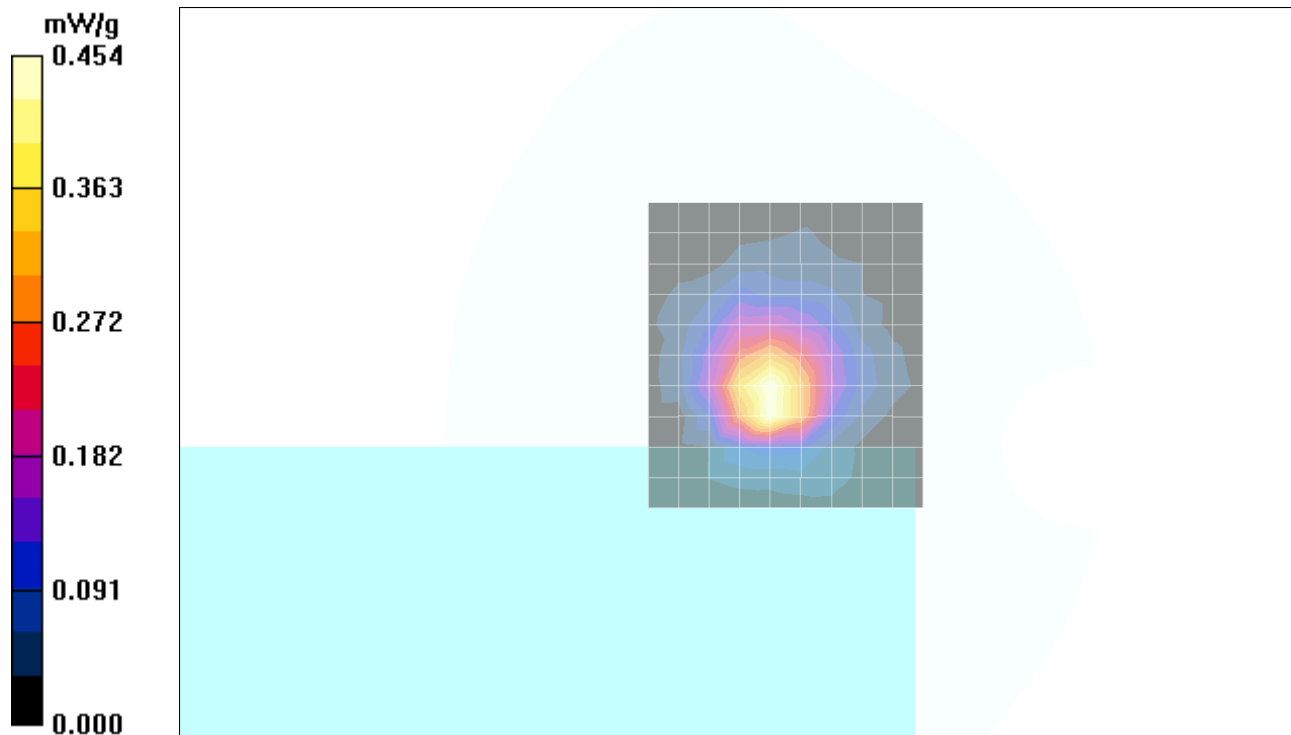
Reference Value = 9.64 V/m; Power Drift = 0.204 dB

Peak SAR (extrapolated) = 0.828 W/kg

SAR(1 g) = 0.264 mW/g; SAR(10 g) = 0.105 mW/g

[Info: Interpolated medium parameters used for SAR evaluation.](#)

Maximum value of SAR (measured) = 0.483 mW/g



Test Laboratory: Compliance Certification Services

LAP Held Position - Main Antenna

DUT: DL Note Tablet; Type: Laptop; Serial: N/A

Communication System: 5200 band; Frequency: 5260 MHz; Duty Cycle: 1:1
Medium parameters used (interpolated): $f = 5260$ MHz; $\sigma = 5.55$ mho/m; $\epsilon_r = 50.7$; $\rho = 1000$ kg/m³
Phantom section: Flat Section

Room Ambient Temperature: 24.0deg. C; Liquid Temperature: 23.0 deg. C

DASY4 Configuration:

- Area Scan setting - Find Secondary Maximum Within: 2.0 dB and with a peak SAR value greater than 0.0012W/kg
- Probe: EX3DV4 - SN3552; ConvF(4.07, 4.07, 4.07); Calibrated: 5/30/2006
- Sensor-Surface: 2mm (Mechanical Surface Detection)
- Electronics: DAE4 SN558; Calibrated: 1/20/2006
- Phantom: SAM 1; Type: SAM 1; Serial: 1185
- Measurement SW: DASY4, V4.7 Build 44; Postprocessing SW: SEMCAD, V1.8 Build 171

HT40 mode M ch/Area Scan (10x27x1): Measurement grid: dx=10mm, dy=10mm

[Info: Interpolated medium parameters used for SAR evaluation.](#)

Maximum value of SAR (measured) = 0.272 mW/g

HT40 mode M ch/Zoom Scan (7x7x9)/Cube 0: Measurement grid: dx=4mm, dy=4mm, dz=2.5mm

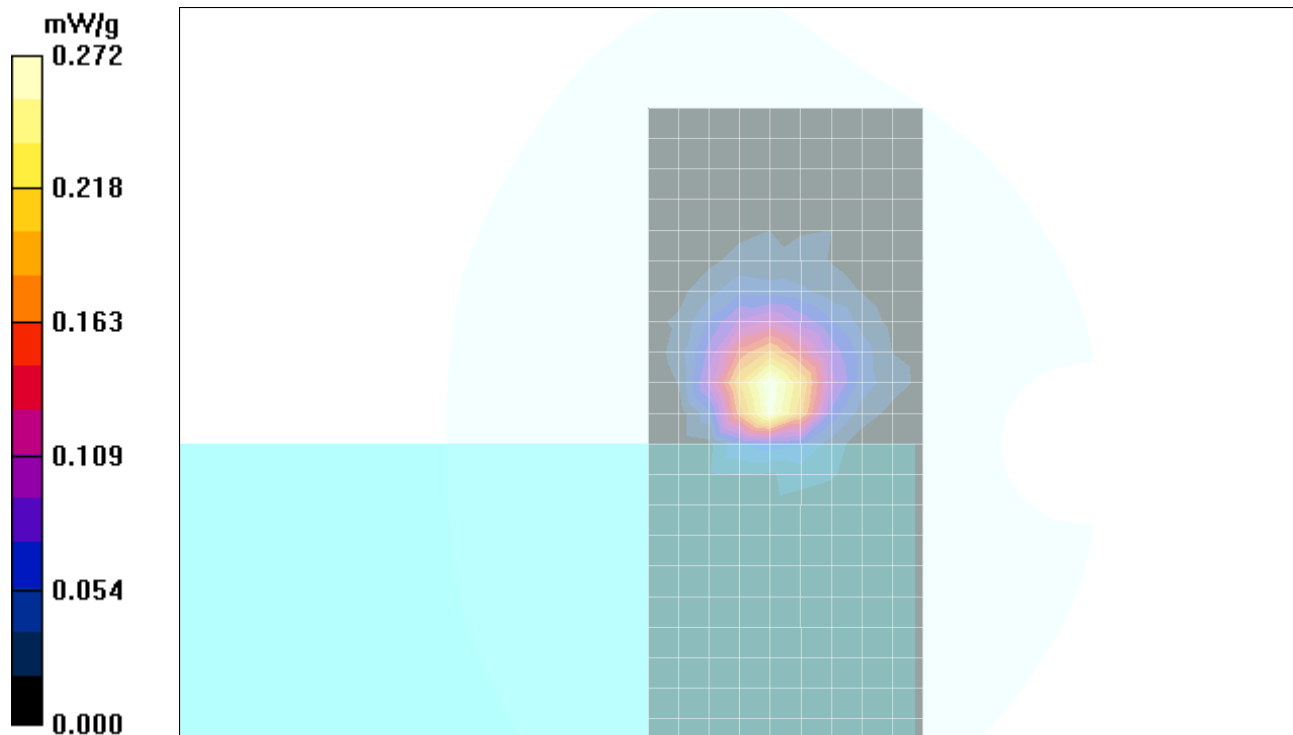
Reference Value = 3.50 V/m; Power Drift = 0.158 dB

Peak SAR (extrapolated) = 0.496 W/kg

SAR(1 g) = 0.155 mW/g; SAR(10 g) = 0.060 mW/g

[Info: Interpolated medium parameters used for SAR evaluation.](#)

Maximum value of SAR (measured) = 0.292 mW/g



Test Laboratory: Compliance Certification Services

LAP Held Position - Aux Antenna

DUT: DL Note Tablet; Type: Laptop; Serial: N/A

Communication System: 5200 band; Frequency: 5260 MHz; Duty Cycle: 1:1
Medium parameters used (interpolated): $f = 5260$ MHz; $\sigma = 5.48$ mho/m; $\epsilon_r = 49.7$; $\rho = 1000$ kg/m³
Phantom section: Flat Section

Room Ambient Temperature: 24.0deg. C; Liquid Temperature: 23.0 deg. C

DASY4 Configuration:

- Area Scan setting - Find Secondary Maximum Within: 2.0 dB and with a peak SAR value greater than 0.0012W/kg
- Probe: EX3DV4 - SN3552; ConvF(4.07, 4.07, 4.07); Calibrated: 5/30/2006
- Sensor-Surface: 2mm (Mechanical Surface Detection)
- Electronics: DAE4 SN558; Calibrated: 1/20/2006
- Phantom: SAM 1; Type: SAM 1; Serial: 1185
- Measurement SW: DASY4, V4.7 Build 44; Postprocessing SW: SEMCAD, V1.8 Build 171

802.11a_5.2GHz band, legacy mode_M ch/Area Scan (10x14x1): Measurement grid: dx=10mm, dy=10mm

[Info: Interpolated medium parameters used for SAR evaluation.](#)

Maximum value of SAR (measured) = 0.048 mW/g

802.11a_5.2GHz band, legacy mode_M ch/Zoom Scan (7x7x9)/Cube 0: Measurement grid:

dx=4mm, dy=4mm, dz=2.5mm

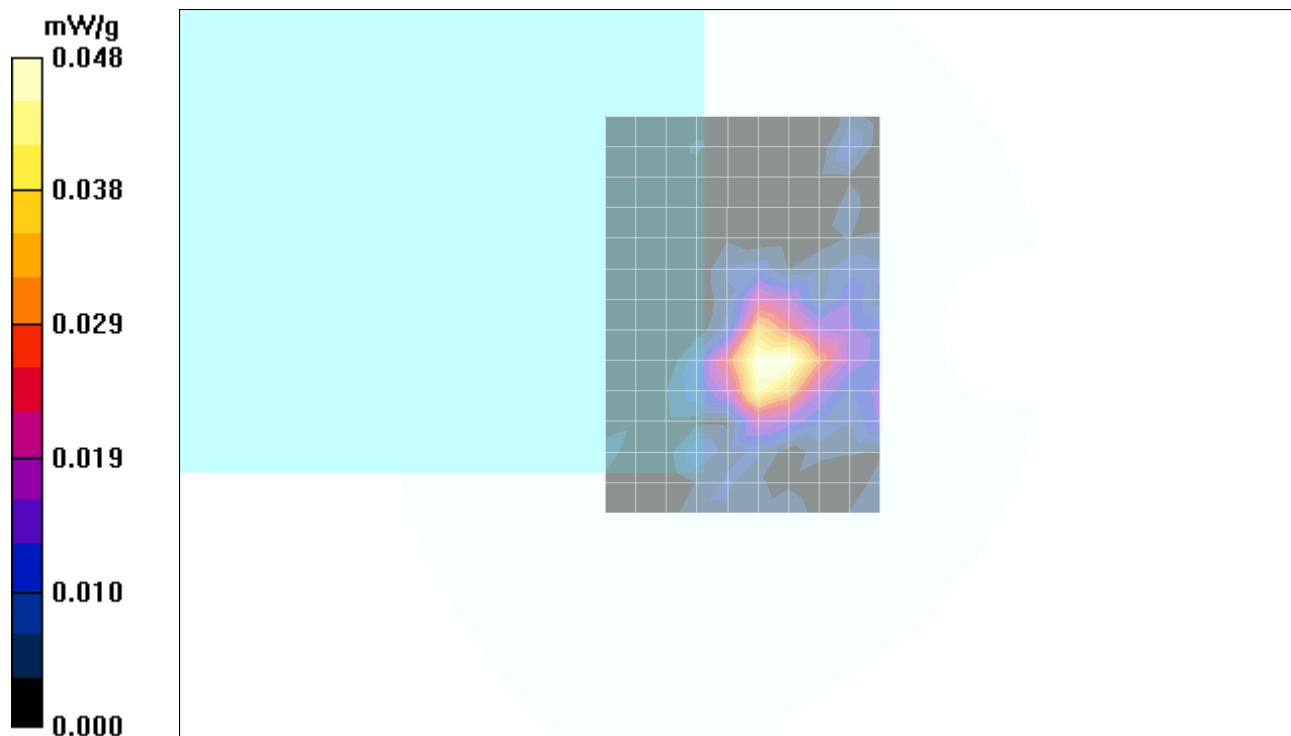
Reference Value = 1.28 V/m; Power Drift = 0.058 dB

Peak SAR (extrapolated) = 0.163 W/kg

SAR(1 g) = 0.022 mW/g; SAR(10 g) = 0.00718 mW/g

[Info: Interpolated medium parameters used for SAR evaluation.](#)

Maximum value of SAR (measured) = 0.052 mW/g



Test Laboratory: Compliance Certification Services

LAP Held Position - Aux Antenna

DUT: DL Note Tablet; Type: Laptop; Serial: N/A

Communication System: 5200 band; Frequency: 5260 MHz; Duty Cycle: 1:1
Medium parameters used (interpolated): $f = 5260$ MHz; $\sigma = 5.48$ mho/m; $\epsilon_r = 49.7$; $\rho = 1000$ kg/m³
Phantom section: Flat Section

Room Ambient Temperature: 24.0deg. C; Liquid Temperature: 23.0 deg. C

DASY4 Configuration:

- Area Scan setting - Find Secondary Maximum Within: 2.0 dB and with a peak SAR value greater than 0.0012W/kg
- Probe: EX3DV4 - SN3552; ConvF(4.07, 4.07, 4.07); Calibrated: 5/30/2006
- Sensor-Surface: 2mm (Mechanical Surface Detection)
- Electronics: DAE4 SN558; Calibrated: 1/20/2006
- Phantom: SAM 1; Type: SAM 1; Serial: 1185
- Measurement SW: DASY4, V4.7 Build 44; Postprocessing SW: SEMCAD, V1.8 Build 171

802.11a_5.2GHz band, HT20 MIMO mode_M ch/Area Scan (10x13x1): Measurement grid:
dx=10mm, dy=10mm

[Info: Interpolated medium parameters used for SAR evaluation.](#)

Maximum value of SAR (measured) = 0.124 mW/g

802.11a_5.2GHz band, HT20 MIMO mode_M ch/Zoom Scan (7x7x9)/Cube 0: Measurement grid: dx=4mm, dy=4mm, dz=2.5mm

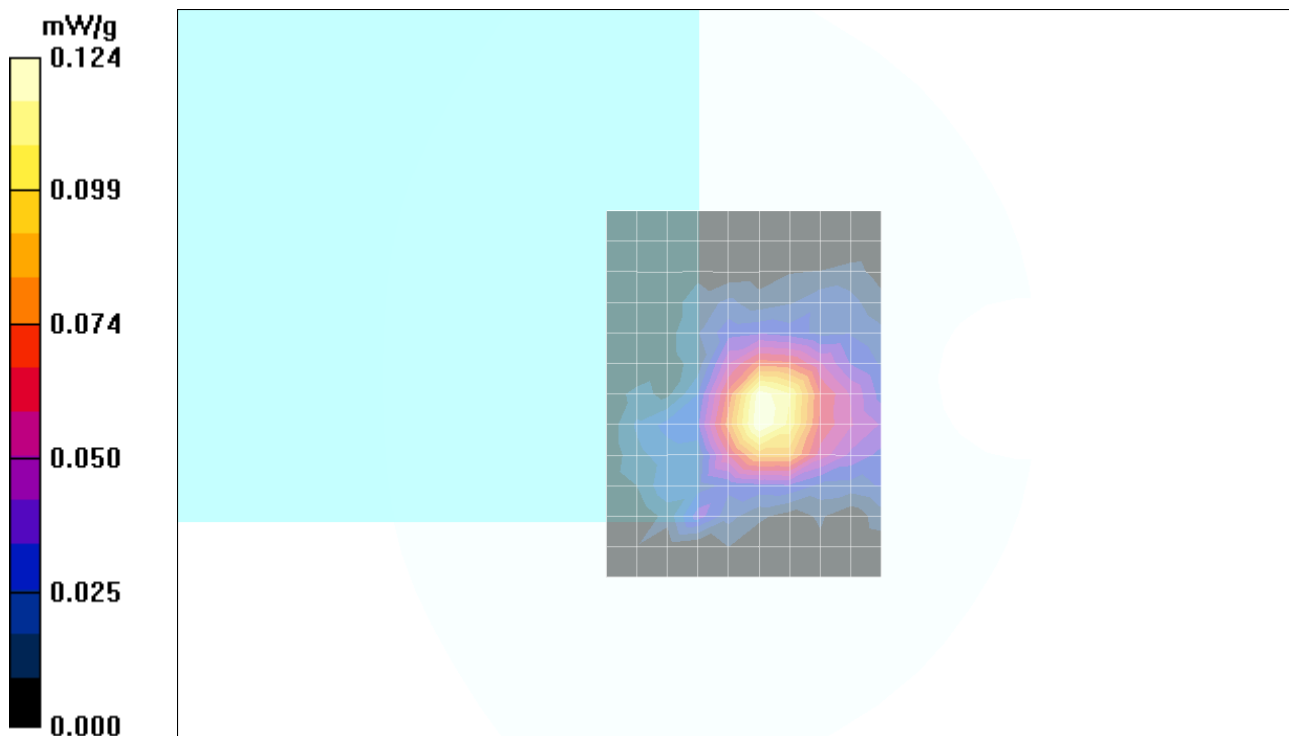
Reference Value = 2.48 V/m; Power Drift = -0.119 dB

Peak SAR (extrapolated) = 0.191 W/kg

SAR(1 g) = 0.061 mW/g; SAR(10 g) = 0.025 mW/g

[Info: Interpolated medium parameters used for SAR evaluation.](#)

Maximum value of SAR (measured) = 0.130 mW/g



Test Laboratory: Compliance Certification Services

LAP Held Position - Aux Antenna

DUT: DL Note Tablet; Type: Laptop; Serial: N/A

Communication System: 5200 band; Frequency: 5260 MHz; Duty Cycle: 1:1
Medium parameters used (interpolated): $f = 5260$ MHz; $\sigma = 5.48$ mho/m; $\epsilon_r = 49.7$; $\rho = 1000$ kg/m³
Phantom section: Flat Section

Room Ambient Temperature: 24.0deg. C; Liquid Temperature: 23.0 deg. C

DASY4 Configuration:

- Area Scan setting - Find Secondary Maximum Within: 2.0 dB and with a peak SAR value greater than 0.0012W/kg
- Probe: EX3DV4 - SN3552; ConvF(4.07, 4.07, 4.07); Calibrated: 5/30/2006
- Sensor-Surface: 2mm (Mechanical Surface Detection)
- Electronics: DAE4 SN558; Calibrated: 1/20/2006
- Phantom: SAM 1; Type: SAM 1; Serial: 1185
- Measurement SW: DASY4, V4.7 Build 44; Postprocessing SW: SEMCAD, V1.8 Build 171

802.11a_5.2GHz band, HT40 MIMO mode_M ch/Area Scan (10x13x1): Measurement grid:
dx=10mm, dy=10mm

[Info: Interpolated medium parameters used for SAR evaluation.](#)

Maximum value of SAR (measured) = 0.134 mW/g

802.11a_5.2GHz band, HT40 MIMO mode_M ch/Zoom Scan (7x7x9)/Cube 0: Measurement grid: dx=4mm, dy=4mm, dz=2.5mm

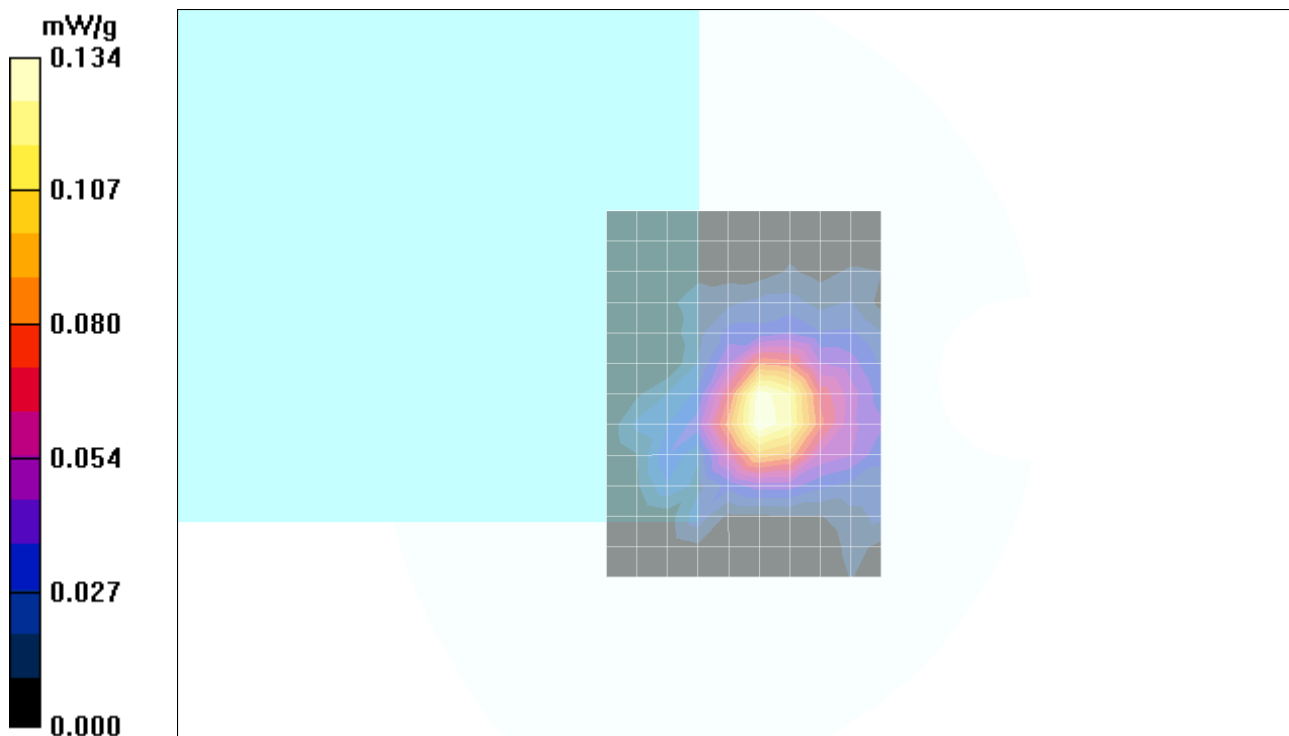
Reference Value = 2.52 V/m; Power Drift = -0.180 dB

Peak SAR (extrapolated) = 0.234 W/kg

SAR(1 g) = 0.070 mW/g; SAR(10 g) = 0.028 mW/g

[Info: Interpolated medium parameters used for SAR evaluation.](#)

Maximum value of SAR (measured) = 0.138 mW/g



Test Laboratory: Compliance Certification Services

LCD Edge Position - Secondary Landscape

DUT: DL Note Tablet; Type: Laptop; Serial: N/A

Communication System: 5200 band; Frequency: 5260 MHz; Duty Cycle: 1:1

Medium parameters used (interpolated): $f = 5260$ MHz; $\sigma = 5.55$ mho/m; $\epsilon_r = 50.7$; $\rho = 1000$ kg/m³

Phantom section: Flat Section

Room Ambient Temperature: 24.0deg. C; Liquid Temperature: 23.0 deg. C

DASY4 Configuration:

- Area Scan setting - Find Secondary Maximum Within: 2.0 dB and with a peak SAR value greater than 0.0012W/kg
- Probe: EX3DV4 - SN3552; ConvF(4.07, 4.07, 4.07); Calibrated: 5/30/2006
- Sensor-Surface: 2mm (Mechanical Surface Detection)
- Electronics: DAE4 SN558; Calibrated: 1/20/2006
- Phantom: SAM 1; Type: SAM 1; Serial: 1185
- Measurement SW: DASY4, V4.7 Build 44; Postprocessing SW: SEMCAD, V1.8 Build 171

a mode M ch/Area Scan (10x27x1): Measurement grid: dx=10mm, dy=10mm

[Info: Interpolated medium parameters used for SAR evaluation.](#)

Maximum value of SAR (measured) = 0.034 mW/g

a mode M ch/Zoom Scan (7x7x9)/Cube 0: Measurement grid: dx=4mm, dy=4mm, dz=2.5mm

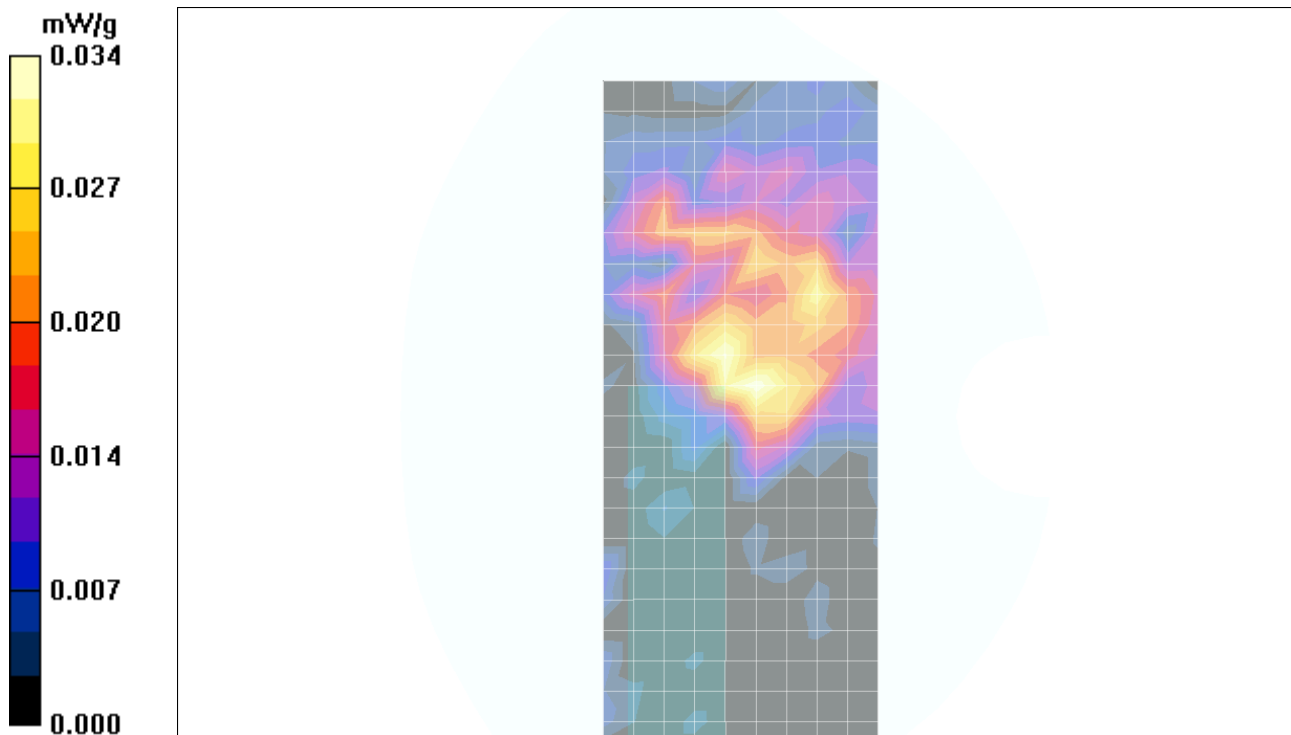
Reference Value = 1.29 V/m; Power Drift = 0.121 dB

Peak SAR (extrapolated) = 0.078 W/kg

SAR(1 g) = 0.016 mW/g; SAR(10 g) = 0.00611 mW/g

[Info: Interpolated medium parameters used for SAR evaluation.](#)

Maximum value of SAR (measured) = 0.036 mW/g



Test Laboratory: Compliance Certification Services

LCD Edge Position - Secondary Landscape

DUT: DL Note Tablet; Type: Laptop; Serial: N/A

Communication System: 5200 band; Frequency: 5260 MHz; Duty Cycle: 1:1

Medium parameters used (interpolated): $f = 5260$ MHz; $\sigma = 5.55$ mho/m; $\epsilon_r = 50.7$; $\rho = 1000$ kg/m³

Phantom section: Flat Section

Room Ambient Temperature: 24.0deg. C; Liquid Temperature: 23.0 deg. C

DASY4 Configuration:

- Area Scan setting - Find Secondary Maximum Within: 2.0 dB and with a peak SAR value greater than 0.0012W/kg
- Probe: EX3DV4 - SN3552; ConvF(4.07, 4.07, 4.07); Calibrated: 5/30/2006
- Sensor-Surface: 2mm (Mechanical Surface Detection)
- Electronics: DAE4 SN558; Calibrated: 1/20/2006
- Phantom: SAM 1; Type: SAM 1; Serial: 1185
- Measurement SW: DASY4, V4.7 Build 44; Postprocessing SW: SEMCAD, V1.8 Build 171

HT20 mode M ch/Area Scan (10x13x1): Measurement grid: dx=10mm, dy=10mm

[Info: Interpolated medium parameters used for SAR evaluation.](#)

Maximum value of SAR (measured) = 0.055 mW/g

HT20 mode M ch/Zoom Scan (7x7x9)/Cube 0: Measurement grid: dx=4mm, dy=4mm, dz=2.5mm

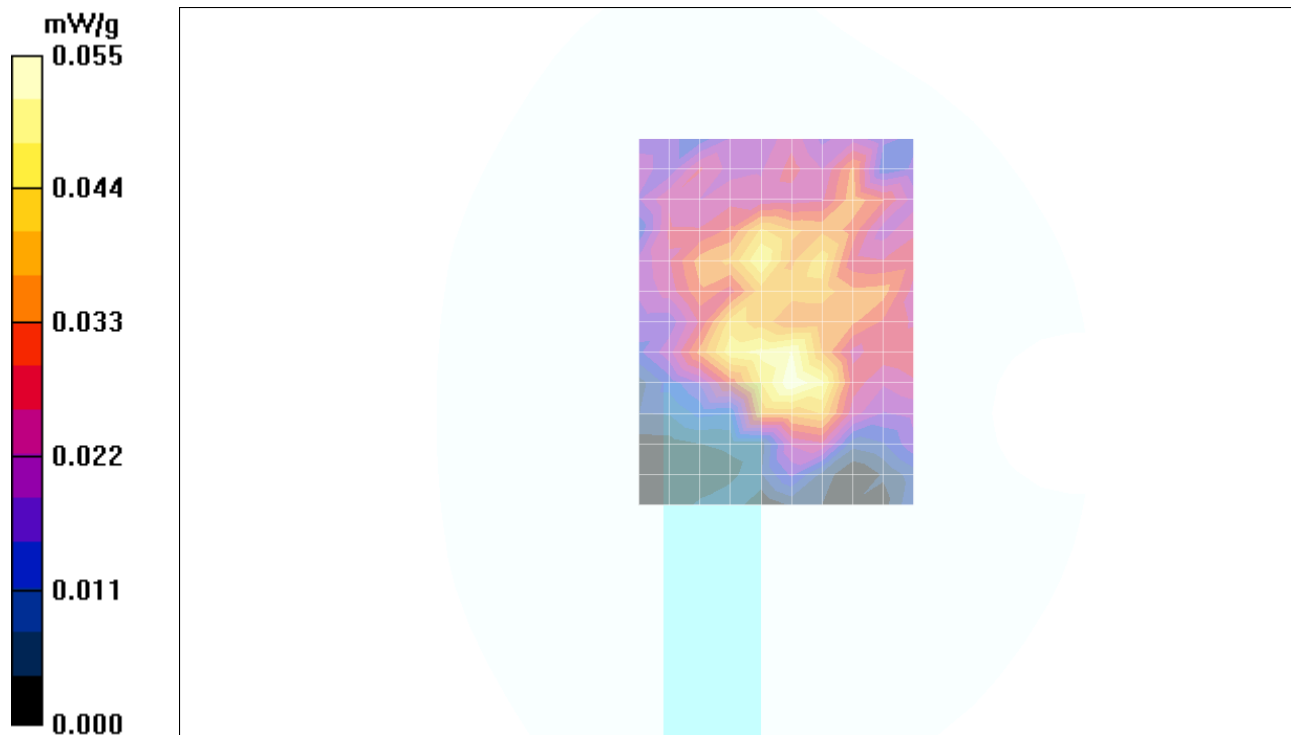
Reference Value = 3.47 V/m; Power Drift = 0.073 dB

Peak SAR (extrapolated) = 0.210 W/kg

SAR(1 g) = 0.027 mW/g; SAR(10 g) = 0.011 mW/g

[Info: Interpolated medium parameters used for SAR evaluation.](#)

Maximum value of SAR (measured) = 0.062 mW/g



Test Laboratory: Compliance Certification Services

LCD Edge Position - Secondary Landscape

DUT: DL Note Tablet; Type: Laptop; Serial: N/A

Communication System: 5200 band; Frequency: 5260 MHz; Duty Cycle: 1:1

Medium parameters used (interpolated): $f = 5260$ MHz; $\sigma = 5.55$ mho/m; $\epsilon_r = 50.7$; $\rho = 1000$ kg/m³

Phantom section: Flat Section

Room Ambient Temperature: 24.0deg. C; Liquid Temperature: 23.0 deg. C

DASY4 Configuration:

- Area Scan setting - Find Secondary Maximum Within: 2.0 dB and with a peak SAR value greater than 0.0012W/kg
- Probe: EX3DV4 - SN3552; ConvF(4.07, 4.07, 4.07); Calibrated: 5/30/2006
- Sensor-Surface: 2mm (Mechanical Surface Detection)
- Electronics: DAE4 SN558; Calibrated: 1/20/2006
- Phantom: SAM 1; Type: SAM 1; Serial: 1185
- Measurement SW: DASY4, V4.7 Build 44; Postprocessing SW: SEMCAD, V1.8 Build 171

HT40 mode M ch/Area Scan (10x13x1): Measurement grid: dx=10mm, dy=10mm

[Info: Interpolated medium parameters used for SAR evaluation.](#)

Maximum value of SAR (measured) = 0.072 mW/g

HT40 mode M ch/Zoom Scan (7x7x9)/Cube 0: Measurement grid: dx=4mm, dy=4mm, dz=2.5mm

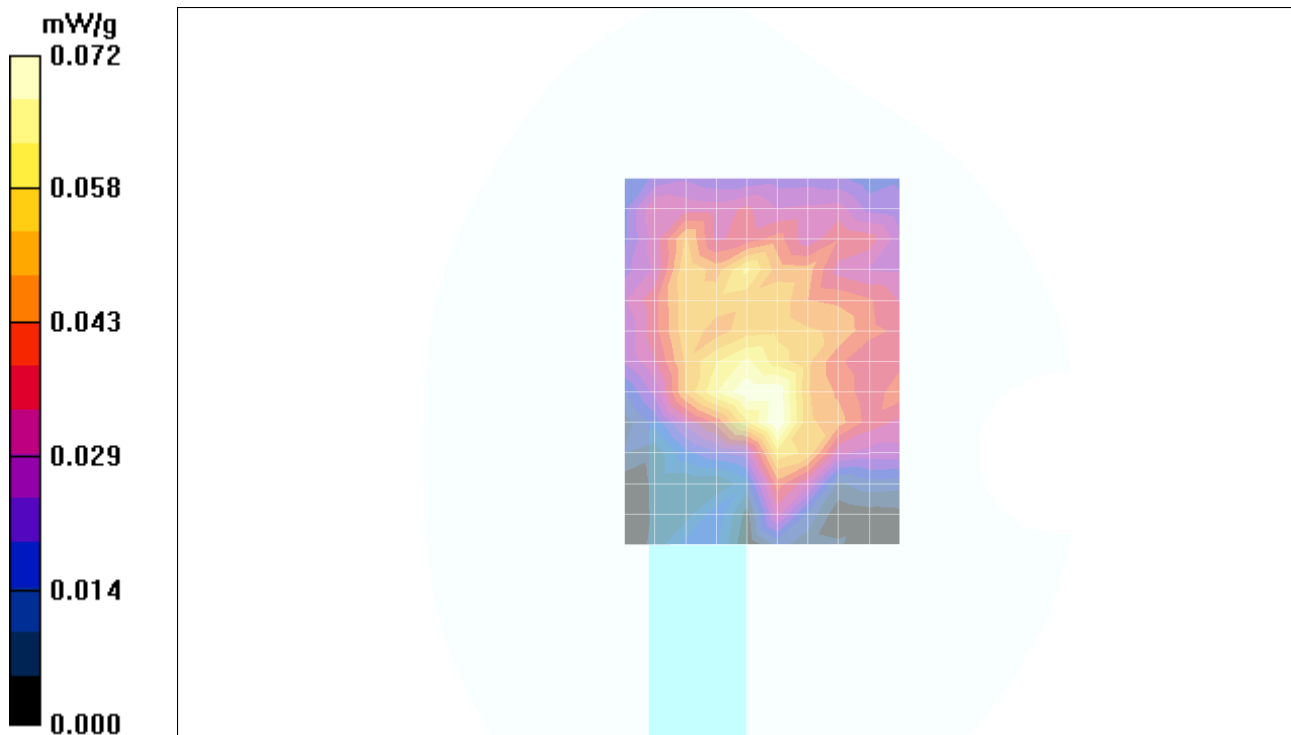
Reference Value = 4.01 V/m; Power Drift = -0.171 dB

Peak SAR (extrapolated) = 0.230 W/kg

SAR(1 g) = 0.040 mW/g; SAR(10 g) = 0.017 mW/g

[Info: Interpolated medium parameters used for SAR evaluation.](#)

Maximum value of SAR (measured) = 0.079 mW/g



Test Laboratory: Compliance Certification Services

LCD Edge Position - Primary Portrait

DUT: DL Note Tablet; Type: Laptop; Serial: N/A

Communication System: 5200 band; Frequency: 5260 MHz; Duty Cycle: 1:1

Medium parameters used (interpolated): $f = 5260$ MHz; $\sigma = 5.55$ mho/m; $\epsilon_r = 50.7$; $\rho = 1000$ kg/m³

Phantom section: Flat Section

Room Ambient Temperature: 24.0deg. C; Liquid Temperature: 23.0 deg. C

DASY4 Configuration:

- Area Scan setting - Find Secondary Maximum Within: 2.0 dB and with a peak SAR value greater than 0.0012W/kg
- Probe: EX3DV4 - SN3552; ConvF(4.07, 4.07, 4.07); Calibrated: 5/30/2006
- Sensor-Surface: 2mm (Mechanical Surface Detection)
- Electronics: DAE4 SN558; Calibrated: 1/20/2006
- Phantom: SAM 1; Type: SAM 1; Serial: 1185
- Measurement SW: DASY4, V4.7 Build 44; Postprocessing SW: SEMCAD, V1.8 Build 171

a mode M ch/Area Scan (7x21x1): Measurement grid: dx=10mm, dy=10mm

[Info: Interpolated medium parameters used for SAR evaluation.](#)

Maximum value of SAR (measured) = 0.262 mW/g

a mode M ch/Zoom Scan (7x7x9)/Cube 0: Measurement grid: dx=4mm, dy=4mm, dz=2.5mm

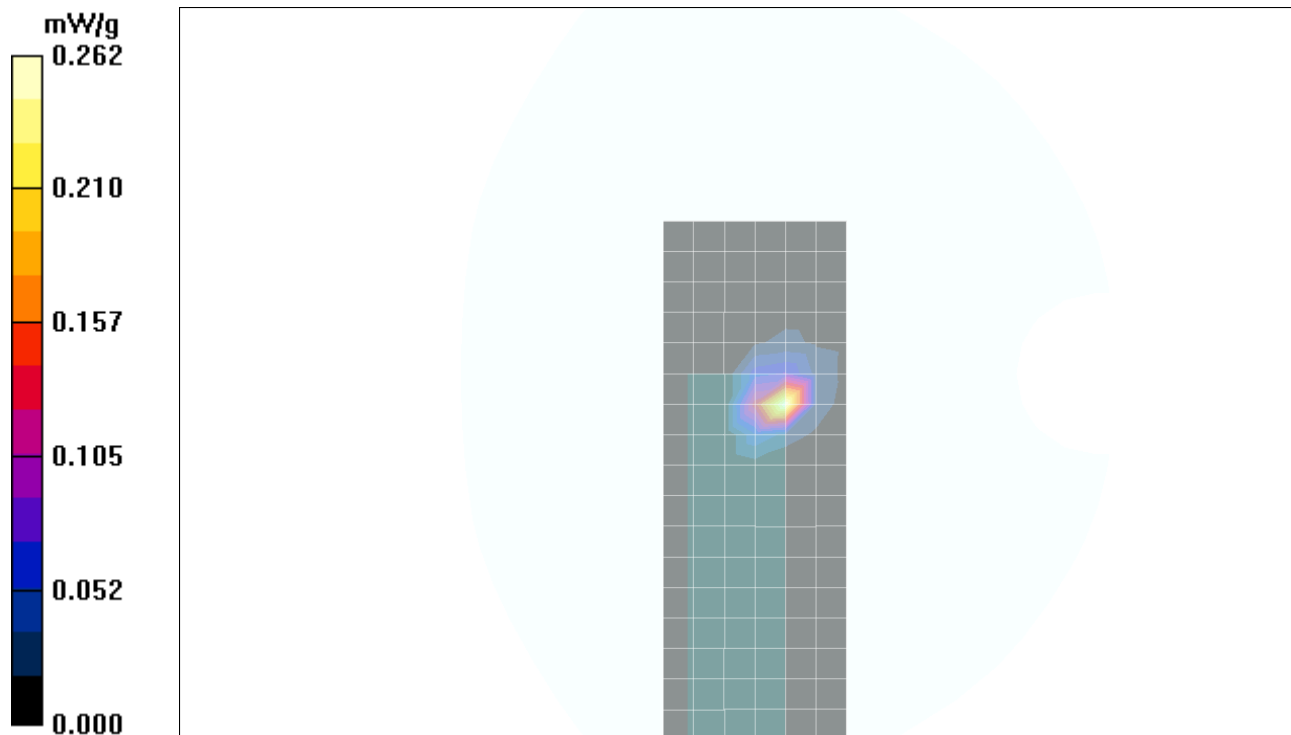
Reference Value = 3.78 V/m; Power Drift = 0.171 dB

Peak SAR (extrapolated) = 0.631 W/kg

SAR(1 g) = 0.148 mW/g; SAR(10 g) = 0.031 mW/g

[Info: Interpolated medium parameters used for SAR evaluation.](#)

Maximum value of SAR (measured) = 0.386 mW/g



Test Laboratory: Compliance Certification Services

LCD Edge Position - Primary Portrait

DUT: DL Note Tablet; Type: Laptop; Serial: N/A

Communication System: 5200 band; Frequency: 5260 MHz; Duty Cycle: 1:1

Medium parameters used (interpolated): $f = 5260$ MHz; $\sigma = 5.55$ mho/m; $\epsilon_r = 50.7$; $\rho = 1000$ kg/m³

Phantom section: Flat Section

Room Ambient Temperature: 24.0deg. C; Liquid Temperature: 23.0 deg. C

DASY4 Configuration:

- Area Scan setting - Find Secondary Maximum Within: 2.0 dB and with a peak SAR value greater than 0.0012W/kg
- Probe: EX3DV4 - SN3552; ConvF(4.07, 4.07, 4.07); Calibrated: 5/30/2006
- Sensor-Surface: 2mm (Mechanical Surface Detection)
- Electronics: DAE4 SN558; Calibrated: 1/20/2006
- Phantom: SAM 1; Type: SAM 1; Serial: 1185
- Measurement SW: DASY4, V4.7 Build 44; Postprocessing SW: SEMCAD, V1.8 Build 171

HT20 mode M ch/Area Scan (6x6x1): Measurement grid: dx=10mm, dy=10mm

[Info: Interpolated medium parameters used for SAR evaluation.](#)

Maximum value of SAR (measured) = 1.16 mW/g

HT20 mode M ch/Zoom Scan (7x7x9)/Cube 0: Measurement grid: dx=4mm, dy=4mm, dz=2.5mm

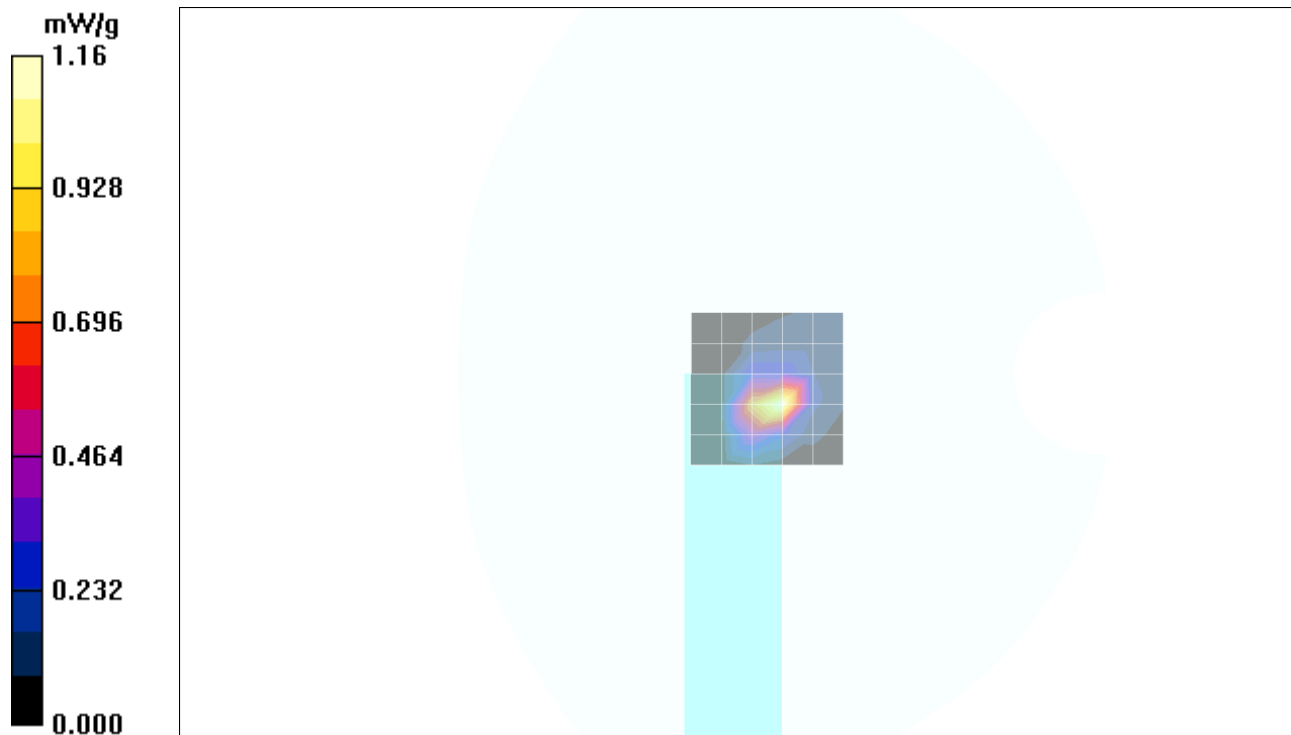
Reference Value = 18.4 V/m; Power Drift = -0.008 dB

Peak SAR (extrapolated) = 2.71 W/kg

SAR(1 g) = 0.677 mW/g; SAR(10 g) = 0.154 mW/g

[Info: Interpolated medium parameters used for SAR evaluation.](#)

Maximum value of SAR (measured) = 1.46 mW/g



Test Laboratory: Compliance Certification Services

LCD Edge Position - Primary Portrait

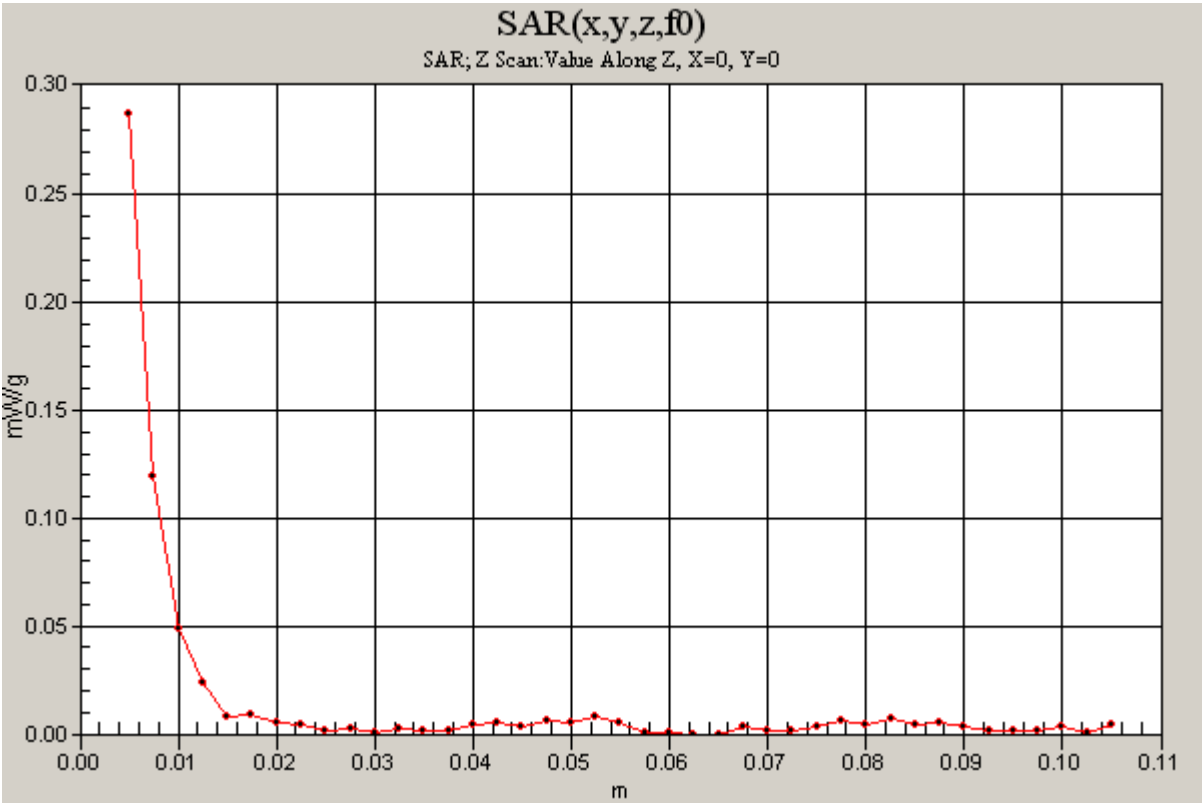
DUT: DL Note Tablet; Type: Laptop; Serial: N/A

Communication System: 5200 band; Frequency: 5260 MHz;Duty Cycle: 1:1

HT20 mode M ch/Z Scan (1x1x41): Measurement grid: dx=20mm, dy=20mm, dz=2.5mm

[Info: Interpolated medium parameters used for SAR evaluation.](#)

Maximum value of SAR (measured) = 0.287 mW/g



Test Laboratory: Compliance Certification Services

LCD Edge Position - Primary Portrait

DUT: DL Note Tablet; Type: Laptop; Serial: N/A

Communication System: 5200 band; Frequency: 5260 MHz; Duty Cycle: 1:1

Medium parameters used (interpolated): $f = 5260$ MHz; $\sigma = 5.55$ mho/m; $\epsilon_r = 50.7$; $\rho = 1000$ kg/m³

Phantom section: Flat Section

Room Ambient Temperature: 24.0deg. C; Liquid Temperature: 23.0 deg. C

DASY4 Configuration:

- Area Scan setting - Find Secondary Maximum Within: 2.0 dB and with a peak SAR value greater than 0.0012W/kg
- Probe: EX3DV4 - SN3552; ConvF(4.07, 4.07, 4.07); Calibrated: 5/30/2006
- Sensor-Surface: 2mm (Mechanical Surface Detection)
- Electronics: DAE4 SN558; Calibrated: 1/20/2006
- Phantom: SAM 1; Type: SAM 1; Serial: 1185
- Measurement SW: DASY4, V4.7 Build 44; Postprocessing SW: SEMCAD, V1.8 Build 171

HT40 mode M ch/Area Scan (6x6x1): Measurement grid: dx=10mm, dy=10mm

[Info: Interpolated medium parameters used for SAR evaluation.](#)

Maximum value of SAR (measured) = 1.01 mW/g

HT40 mode M ch/Zoom Scan (7x7x9)/Cube 0: Measurement grid: dx=4mm, dy=4mm, dz=2.5mm

Reference Value = 17.5 V/m; Power Drift = 0.019 dB

Peak SAR (extrapolated) = 3.14 W/kg

SAR(1 g) = 0.615 mW/g; SAR(10 g) = 0.143 mW/g

[Info: Interpolated medium parameters used for SAR evaluation.](#)

Maximum value of SAR (measured) = 1.36 mW/g

