



# SAR Evaluation Report

IN ACCORDANCE WITH THE REQUIREMENTS OF  
FCC OET BULLETIN 65 SUPPLEMENT C

FOR

850/900/1800/1900 MHZ QUADBAND MODULE

MODEL: MC8765

FCC ID: N7NMC8765

REPORT NUMBER: 06U10631-3B

ISSUE DATE: OCTOBER 20, 2006

*Prepared for*

SIERRA WIRELESS INC  
13811 WIRELESS WAY  
RICHMOND, BC V6V 3A4 CANADA

*Prepared by*

COMPLIANCE CERTIFICATION SERVICES  
561F MONTEREY ROAD,  
MORGAN HILL, CA 95037, USA  
TEL: (408) 463-0885

**NVLAQ<sup>®</sup>**  
LAB CODE:200065-0

**Revision History**

| Rev. | Issued date      | Revisions  | Revised By |
|------|------------------|--|------------|
| --   | October 5, 2006  | Initial issue  | HS         |
| B    | October 20, 2006 | <ol style="list-style-type: none"><li>1. Additional SAR data for PRIMARY PORTRAIT configuration and removed the data related to collocations.</li><li>2. Updated system performance check plots due to additional SAR test.</li><li>3. Updated SAR test plots and removed the plots related to collocations.</li></ol> | HS         |

**CERTIFICATE OF COMPLIANCE (SAR EVALUATION)**

**DATES OF TEST:** October 2, 3, 4, 18 and 19, 2006

|  |  |
|--|--|
| APPLICANT:<br>ADDRESS:                 | SIERRA WIRELESS INC<br>13811 WIRELESS WAY, RICHMOND, BC V6V 3A4 CANADA |
| FCC ID:<br>MODEL:                      | N7NMC8765<br>MC8765  |
| DEVICE CATEGORY:<br>EXPOSURE CATEGORY: | Portable Device<br>General Population/Uncontrolled Exposure            |

850/900/1800/1900 MHz QuadBand Module installed into Lenovo ThinkPad X60 Tablet.  
 Note: This device contains 900/1800 MHz bands that are not operational in US territories. This report is applicable to 850 and 1900 MHz bands.

|                   |                            |                                  |
|-------------------|----------------------------|----------------------------------|
| Test Sample is a: | Production unit            |                                  |
| Host Laptop       | Lenovo ThinkPad X60 Tablet |                                  |
| Rule Parts        | Frequency Range [MHz]      | The Highest SAR Values [1g_mW/g] |
| 22H               | 824.2-848.8                | 0.285                            |
| 24E               | 1850.2-1909.8              | 0.358                            |

This wireless portable device has been shown to be capable of compliance for localized specific absorption rate (SAR) for General Population/Uncontrolled Exposure limits specified in ANSI/IEEE Std. C95.1-1992 and had been tested in accordance with the measurement procedures specified in FCC OET 65 Supplement C (Edition 01-01).

Note: The results documented in this report apply only to the tested sample, under the conditions and modes of operation as described herein. This document may not be altered or revised in any way unless done so by Compliance Certification Services and all revisions are duly noted in the revisions section. Any alteration of this document not carried out by Compliance Certification Services will constitute fraud and shall nullify the document. No part of this report may be used to claim product certification, approval, or endorsement by NVLAP, NIST, or any government agency.

Approved & Released For CCS By:

Tested By:

*Hsin Fu Shih*

*Ninous Davoudi*

Hsin Fu Shih  
Senior Engineer  
Compliance Certification Services

Ninous Davoudi  
EMC Engineer  
Compliance Certification Services

TABLE OF CONTENTS

|       |  |    |
|-------|--|----|
| 1     | EQUIPMENT UNDER TEST (EUT) DESCRIPTION.....                    | 5  |
| 2     | FACILITIES AND ACCREDITATION .....                             | 6  |
| 3     | SYSTEM DESCRIPTION .....                                       | 7  |
| 3.1   | COMPOSITION OF INGREDIENTS FOR TISSUE SIMULATING LIQUIDS ..... | 8  |
| 4     | SIMULATING LIQUID PARAMETERS CHECK.....                        | 9  |
| 4.1   | SIMULATING LIQUID PARAMETER CHECK RESULT.....                  | 10 |
| 5     | SYSTEM PERFORMANCE CHECK.....                                  | 15 |
| 6     | SAR MEASUREMENT PROCEDURE .....                                | 17 |
| 6.1   | DASY4 SAR MEASUREMENT PROCEDURE .....                          | 18 |
| 7     | PROCEDURE USED TO ESTABLISH TEST SIGNAL .....                  | 19 |
| 8     | SAR MEASUREMENT RESULTS.....                                   | 24 |
| 8.1   | CELL BAND .....  | 26 |
| 8.1.1 | EDGE POSITION – PRIMARY PORTRAIT .....                         | 26 |
| 8.1.2 | LCD EDGE POSITION – SECONDARY PORTRAIT .....                   | 27 |
| 8.1.3 | LAP HELD POSITION.....   | 28 |
| 8.2   | PCS BAND.....  | 29 |
| 8.2.1 | EDGE POSITION – PRIMARY PORTRAIT .....                         | 29 |
| 8.2.2 | LCD EDGE POSITION – SECONDARY PORTRAIT .....                   | 30 |
| 8.2.3 | LAP HELD POSITION.....   | 31 |
| 9     | MEASUREMENT UNCERTAINTY .....                                  | 32 |
| 9.1   | MEASUREMENT UNCERTAINTY FOR 300 MHZ – 3000 MHZ .....           | 32 |
| 10    | EQUIPMENT LIST AND CALIBRATION.....                            | 33 |
| 11    | PHOTOS .....   | 34 |
| 12    | ATTACHMENTS.....   | 38 |

**1 EQUIPMENT UNDER TEST (EUT) DESCRIPTION**

850/900/1800/1900 MHz QuadBand Module installed into Lenovo ThinkPad X60 Tablet.  
Note: This device contains 900/1800 MHz bands that are not operational in US territories. This report is applicable to 850 and 1900 MHz bands.

|                          |   |
|--------------------------|---|
| GPRS Multi-slot Classes: | Class 10 (2up, 3 down) for both GPRS and EGPRS            |
| Normal operation:        | Lenovo Lap-held position                                  |
| Duty cycle:              | 25% both GPRS and EGPRS modes<br>100% for WCDMA           |
| Normal operation:        | Lap-held position   |
| Host Device(s):          | Lenovo ThinkPad X60 Tablet                                |
| Antenna(s)               | Wistron Neweb Corp. PIFA Antenna, P/N: 60.4Q423.001       |
| Power supply:            | Power supplied through the laptop computer (host device). |

## 2 FACILITIES AND ACCREDITATION

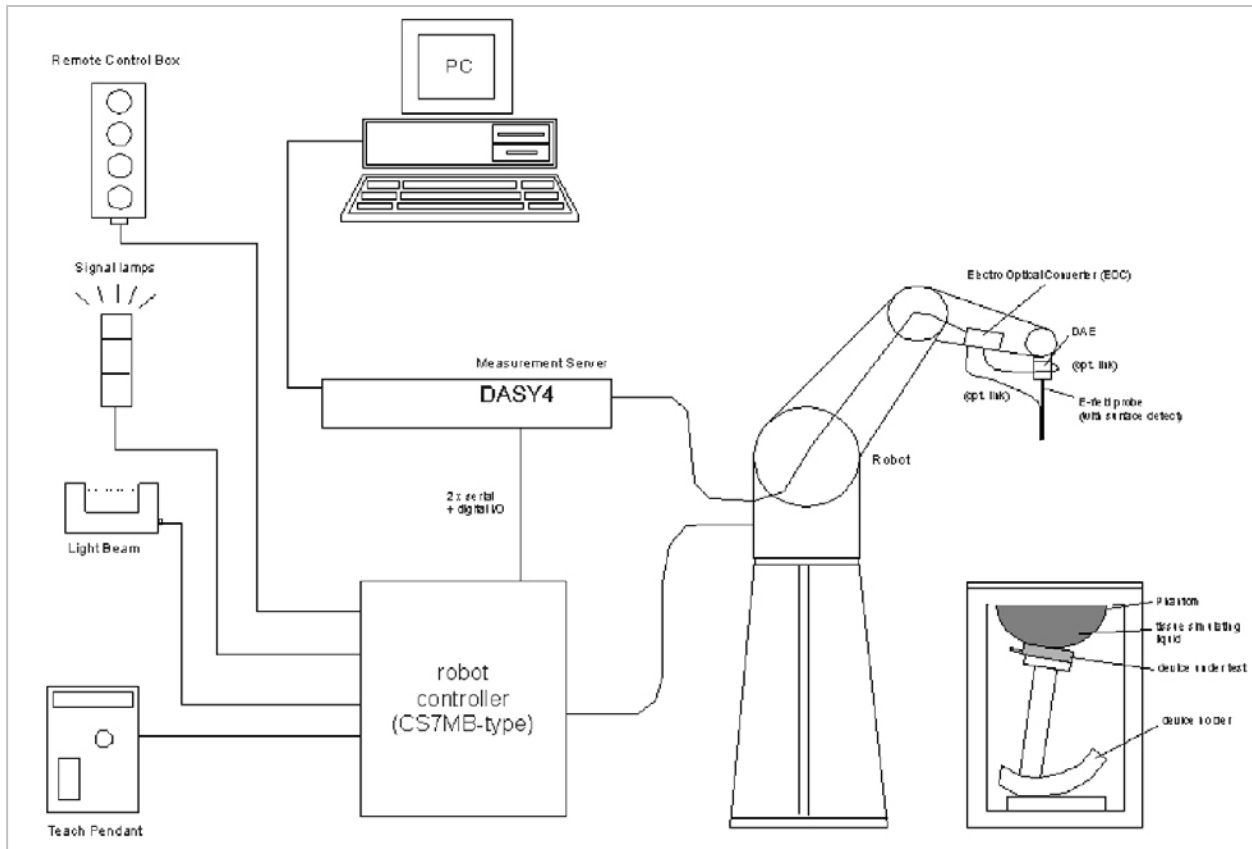
The test sites and measurement facilities used to collect data are located at 561F Monterey Road, Morgan Hill, California, USA. The sites are constructed in conformance with the requirements of ANSI C63.4, ANSI C63.7 and CISPR Publication 22. All receiving equipment conforms to CISPR Publication 16-1, "Radio Interference Measuring Apparatus and Measurement Methods."



CCS is accredited by NVLAP, Laboratory Code 200065-0. The full scope of accreditation can be viewed at <http://www.ccsemc.com>.

No part of this report may be used to claim product certification, approval, or endorsement by NVLAP, NIST, or any government agency.

### 3 SYSTEM DESCRIPTION



#### The DASY4 system for performing compliance tests consists of the following items:

- A standard high precision 6-axis robot (Stäubli RX family) with controller, teach pendant and software. An arm extension for accommodating the data acquisition electronics (DAE).
- A dosimetric probe, i.e., an isotropic E-field probe optimized and calibrated for usage in tissue simulating liquid. The probe is equipped with an optical surface detector system.
- A data acquisition electronics (DAE) which performs the signal amplification, signal multiplexing, AD-conversion, offset measurements, mechanical surface detection, collision detection, etc. The unit is battery powered with standard or rechargeable batteries. The signal is optically transmitted to the EOC.
- The function of the measurement server is to perform the time critical tasks such as signal filtering, control of the robot operation and fast movement interrupts.
- A probe alignment unit which improves the (absolute) accuracy of the probe positioning.
- A computer operating Windows 2000 or Windows XP.
- DASY4 software.
- Remote controls with teach pendant and additional circuitry for robot safety such as warning lamps, etc.
- The SAM twin phantom enabling testing left-hand and right-hand usage.
- The device holder for handheld mobile phones.
- Tissue simulating liquid mixed according to the given recipes.
- Validation dipole kits allowing to validate the proper functioning of the system.

### 3.1 COMPOSITION OF INGREDIENTS FOR TISSUE SIMULATIG LIQUIDS

The following tissue formulations are provided for reference only as some of the parameters have not been thoroughly verified. The composition of ingredients may be modified accordingly to achieve the desired target tissue parameters required for routine SAR evaluation.

| Ingredients<br>(% by weight) | Frequency (MHz) |       |       |      |       |       |       |      |      |      |
|------------------------------|-----------------|-------|-------|------|-------|-------|-------|------|------|------|
|                              | 450             |       | 835   |      | 915   |       | 1900  |      | 2450 |      |
| Tissue Type                  | Head            | Body  | Head  | Body | Head  | Body  | Head  | Body | Head | Body |
| Water                        | 38.56           | 51.16 | 41.45 | 52.4 | 41.05 | 56.0  | 54.9  | 40.4 | 62.7 | 73.2 |
| Salt (NaCl)                  | 3.95            | 1.49  | 1.45  | 1.4  | 1.35  | 0.76  | 0.18  | 0.5  | 0.5  | 0.04 |
| Sugar                        | 56.32           | 46.78 | 56.0  | 45.0 | 56.5  | 41.76 | 0.0   | 58.0 | 0.0  | 0.0  |
| HEC                          | 0.98            | 0.52  | 1.0   | 1.0  | 1.0   | 1.21  | 0.0   | 1.0  | 0.0  | 0.0  |
| Bactericide                  | 0.19            | 0.05  | 0.1   | 0.1  | 0.1   | 0.27  | 0.0   | 0.1  | 0.0  | 0.0  |
| Triton X-100                 | 0.0             | 0.0   | 0.0   | 0.0  | 0.0   | 0.0   | 0.0   | 0.0  | 36.8 | 0.0  |
| DGBE                         | 0.0             | 0.0   | 0.0   | 0.0  | 0.0   | 0.0   | 44.92 | 0.0  | 0.0  | 26.7 |
| Dielectric Constant          | 43.42           | 58.0  | 42.54 | 56.1 | 42.0  | 56.8  | 39.9  | 54.0 | 39.8 | 52.5 |
| Conductivity (S/m)           | 0.85            | 0.83  | 0.91  | 0.95 | 1.0   | 1.07  | 1.42  | 1.45 | 1.88 | 1.78 |

Salt: 99+% Pure Sodium Chloride

Sugar: 98+% Pure Sucrose

Water: De-ionized, 16 MΩ+ resistivity

HEC: Hydroxyethyl Cellulose

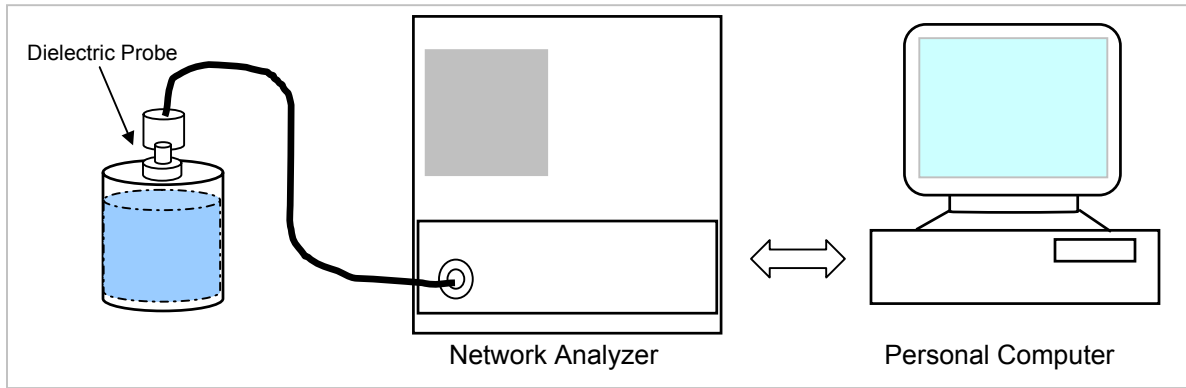
DGBE: 99+% Di(ethylene glycol) butyl ether, [2-(2-butoxyethoxy)ethanol]

Triton X-100 (ultra pure): Polyethylene glycol mono [4-(1,1, 3, 3-tetramethylbutyl)phenyl]ether



**4 SIMULATING LIQUID PARAMETERS CHECK**

The simulating liquids should be checked at the beginning of a series of SAR measurements to determine if the dielectric parameters are within the tolerances of the specified target values. The relative permittivity and conductivity of the tissue material should be within  $\pm 5\%$  of the values given in the table below.



Set-up for liquid parameters check

**Reference Values of Tissue Dielectric Parameters for Head and Body Phantom (for 150 – 3000 MHz and 5800 MHz)**

The head tissue dielectric parameters recommended by the IEEE SCC-34/SC-2 in IEEE Standard 1528 have been incorporated in the following table. These head parameters are derived from planar layer models simulating the highest expected SAR for the dielectric properties and tissue thickness variations in a human head. Other head and body tissue parameters that have not been specified in P1528 are derived from the tissue dielectric parameters computed from the 4-Cole-Cole equations and extrapolated according to the head parameters specified in IEEE Standard 1528.

| Target Frequency (MHz) | Head         |                | Body         |                |
|------------------------|--------------|----------------|--------------|----------------|
|                        | $\epsilon_r$ | $\sigma$ (S/m) | $\epsilon_r$ | $\sigma$ (S/m) |
| 150                    | 52.3         | 0.76           | 61.9         | 0.80           |
| 300                    | 45.3         | 0.87           | 58.2         | 0.92           |
| 450                    | 43.5         | 0.87           | 56.7         | 0.94           |
| 835                    | 41.5         | 0.90           | <b>55.2</b>  | <b>0.97</b>    |
| 900                    | 41.5         | 0.97           | 55.0         | 1.05           |
| 915                    | 41.5         | 0.98           | 55.0         | 1.06           |
| 1450                   | 40.5         | 1.20           | 54.0         | 1.30           |
| 1610                   | 40.3         | 1.29           | 53.8         | 1.40           |
| 1800 – 2000            | 40.0         | 1.40           | <b>53.3</b>  | <b>1.52</b>    |
| 2450                   | 39.2         | 1.80           | 52.7         | 1.95           |
| 3000                   | 38.5         | 2.40           | 52.0         | 2.73           |
| 5800                   | 35.3         | 5.27           | 48.2         | 6.00           |

( $\epsilon_r$  = relative permittivity,  $\sigma$  = conductivity and  $\rho = 1000 \text{ kg/m}^3$ )

**4.1 SIMULATING LIQUID PARAMETER CHECK RESULT**

Simulating Liquid Dielectric Parameters Check Result @ Muscle 835 MHz

Room Ambient Temperature = 23°C; Relative humidity = 40%

Measured by: Ninous Davoudi

| Simulating Liquid |            |            | Parameters |         | Measured                                 | Target  | Deviation (%) | Limit (%) |     |
|-------------------|------------|------------|------------|---------|--|---------|---------------|-----------|-----|
| f (MHz)           | Temp. (°C) | Depth (cm) |            |         |  |         |               |           |     |
| 835               | 22         | 15         | e'         | 53.8506 | Relative Permittivity (ε <sub>r</sub> ): | 53.8506 | 55.2          | -2.44     | ± 5 |
|                   |            |            | e"         | 20.6732 | Conductivity (σ):                        | 0.96031 | 0.97          | -1.00     | ± 5 |

Liquid Check

Ambient temperature: 23.0 deg. C; Liquid temperature: 22.0 deg C

October 02, 2006 05:18 PM

| Frequency         | e'             | e"             |
|-------------------|----------------|----------------|
| 800000000.        | 54.1868        | 20.8718        |
| 805000000.        | 54.1337        | 20.8104        |
| 810000000.        | 54.1160        | 20.7989        |
| 815000000.        | 54.0502        | 20.7598        |
| 820000000.        | 53.9957        | 20.7338        |
| 825000000.        | 53.9356        | 20.7047        |
| 830000000.        | 53.8962        | 20.6684        |
| <b>835000000.</b> | <b>53.8506</b> | <b>20.6732</b> |
| 840000000.        | 53.7786        | 20.6329        |
| 845000000.        | 53.7603        | 20.6170        |
| 850000000.        | 53.7106        | 20.6019        |
| 855000000.        | 53.6453        | 20.5712        |
| 860000000.        | 53.6012        | 20.5652        |
| 865000000.        | 53.5438        | 20.5215        |
| 870000000.        | 53.5087        | 20.5339        |
| 875000000.        | 53.4395        | 20.5379        |
| 880000000.        | 53.4063        | 20.5494        |
| 885000000.        | 53.3231        | 20.5379        |
| 890000000.        | 53.2974        | 20.5361        |
| 895000000.        | 53.2528        | 20.5102        |
| 900000000.        | 53.2219        | 20.4636        |

The conductivity (σ) can be given as:

$$\sigma = \omega \epsilon_0 e'' = 2 \pi f \epsilon_0 e''$$

where  $f = \text{target } f * 10^6$

$\epsilon_0 = 8.854 * 10^{-12}$

Simulating Liquid Dielectric Parameters Check Result @ Muscle 835 MHz

Room Ambient Temperature = 23°C; Relative humidity = 40%

Measured by: Ninous Davoudi

| Simulating Liquid |            |            | Parameters |         | Measured                                 | Target  | Deviation (%) | Limit (%) |     |
|-------------------|------------|------------|------------|---------|--|---------|---------------|-----------|-----|
| f (MHz)           | Temp. (°C) | Depth (cm) |            |         |  |         |               |           |     |
| 835               | 22         | 15         | e'         | 54.4764 | Relative Permittivity (ε <sub>r</sub> ): | 54.4764 | 55.2          | -1.31     | ± 5 |
|                   |            |            | e"         | 20.8178 | Conductivity (σ):                        | 0.96703 | 0.97          | -0.31     | ± 5 |

Liquid Check

Ambient temperature: 23.0 deg. C; Liquid temperature: 22.0 deg C

October 03, 2006 04:27 PM

| Frequency         | e'             | e"             |
|-------------------|----------------|----------------|
| 800000000.        | 54.7650        | 20.9629        |
| 805000000.        | 54.7570        | 20.9395        |
| 810000000.        | 54.7305        | 20.8944        |
| 815000000.        | 54.6755        | 20.8769        |
| 820000000.        | 54.6148        | 20.8560        |
| 825000000.        | 54.5602        | 20.8332        |
| 830000000.        | 54.5028        | 20.8450        |
| <b>835000000.</b> | <b>54.4764</b> | <b>20.8178</b> |
| 840000000.        | 54.4543        | 20.8000        |
| 845000000.        | 54.3539        | 20.7460        |
| 850000000.        | 54.3194        | 20.7769        |
| 855000000.        | 54.2857        | 20.7206        |
| 860000000.        | 54.2032        | 20.7048        |
| 865000000.        | 54.1314        | 20.6853        |
| 870000000.        | 54.0867        | 20.6772        |
| 875000000.        | 54.0321        | 20.6411        |
| 880000000.        | 53.9836        | 20.6456        |
| 885000000.        | 53.9345        | 20.6185        |
| 890000000.        | 53.8899        | 20.6006        |
| 895000000.        | 53.9023        | 20.5919        |
| 900000000.        | 53.8521        | 20.5555        |

The conductivity (σ) can be given as:

$$\sigma = \omega \epsilon_0 e'' = 2 \pi f \epsilon_0 e''$$

where  $f = \text{target } f * 10^6$

$$\epsilon_0 = 8.854 * 10^{-12}$$

Simulating Liquid Dielectric Parameters Check Result @ Muscle 835 MHz

Room Ambient Temperature = 23°C; Relative humidity = 40%

Measured by: Ninous Davoudi

| Simulating Liquid |            |            | Parameters |         | Measured                                 | Target  | Deviation (%) | Limit (%) |     |
|-------------------|------------|------------|------------|---------|--|---------|---------------|-----------|-----|
| f (MHz)           | Temp. (°C) | Depth (cm) |            |         |  |         |               |           |     |
| 835               | 22         | 15         | e'         | 54.4519 | Relative Permittivity (ε <sub>r</sub> ): | 54.4519 | 55.2          | -1.36     | ± 5 |
|                   |            |            | e"         | 20.8709 | Conductivity (σ):                        | 0.96950 | 0.97          | -0.05     | ± 5 |

Liquid Check

Ambient temperature: 23.0 deg. C; Liquid temperature: 22.0 deg C

October 18, 2006 05:23 PM

| Frequency         | e'             | e"             |
|-------------------|----------------|----------------|
| 800000000.        | 54.7671        | 21.0647        |
| 805000000.        | 54.7548        | 20.9969        |
| 810000000.        | 54.6826        | 20.9963        |
| 815000000.        | 54.6659        | 20.9590        |
| 820000000.        | 54.6184        | 20.9274        |
| 825000000.        | 54.5523        | 20.9029        |
| 830000000.        | 54.5073        | 20.8877        |
| <b>835000000.</b> | <b>54.4519</b> | <b>20.8709</b> |
| 840000000.        | 54.4168        | 20.8469        |
| 845000000.        | 54.3670        | 20.8395        |
| 850000000.        | 54.3039        | 20.7937        |
| 855000000.        | 54.2561        | 20.7859        |
| 860000000.        | 54.1964        | 20.7721        |
| 865000000.        | 54.1716        | 20.7344        |
| 870000000.        | 54.1081        | 20.7333        |
| 875000000.        | 54.0642        | 20.7247        |
| 880000000.        | 54.0157        | 20.7287        |
| 885000000.        | 53.9645        | 20.7232        |
| 890000000.        | 53.9053        | 20.7209        |
| 895000000.        | 53.8854        | 20.6825        |
| 900000000.        | 53.8561        | 20.6584        |

The conductivity (σ) can be given as:

$$\sigma = \omega \epsilon_0 e'' = 2 \pi f \epsilon_0 e''$$

where  $f = \text{target } f * 10^6$

$$\epsilon_0 = 8.854 * 10^{-12}$$

Simulating Liquid Dielectric Parameters Check Result @ Muscle 1900 MHz

Room Ambient Temperature = 23°C; Relative humidity = 40%

Measured by: Ninous Davoudi

| Simulating Liquid |            |            | Parameters |         | Measured                                 | Target  | Deviation (%) | Limit (%) |     |
|-------------------|------------|------------|------------|---------|--|---------|---------------|-----------|-----|
| f (MHz)           | Temp. (°C) | Depth (cm) |            |         |  |         |               |           |     |
| 1900              | 22         | 15         | e'         | 53.8416 | Relative Permittivity (ε <sub>r</sub> ): | 53.8416 | 53.3          | 1.02      | ± 5 |
|                   |            |            | e"         | 13.8394 | Conductivity (σ):                        | 1.46282 | 1.52          | -3.76     | ± 5 |

Liquid Check

Ambient temperature: 23.0 deg. C; Liquid temperature: 22.0 deg C

October 03, 2006 09:22 PM

| Frequency          | e'             | e"             |
|--------------------|----------------|----------------|
| 1710000000.        | 54.4787        | 13.1383        |
| 1720000000.        | 54.4507        | 13.1772        |
| 1730000000.        | 54.4224        | 13.2089        |
| 1740000000.        | 54.3658        | 13.2652        |
| 1750000000.        | 54.3273        | 13.3097        |
| 1760000000.        | 54.2872        | 13.3411        |
| 1770000000.        | 54.2580        | 13.3781        |
| 1780000000.        | 54.2222        | 13.4136        |
| 1790000000.        | 54.1898        | 13.4462        |
| 1800000000.        | 54.1700        | 13.4863        |
| 1810000000.        | 54.1331        | 13.5050        |
| 1820000000.        | 54.1119        | 13.5428        |
| 1830000000.        | 54.0656        | 13.5669        |
| 1840000000.        | 54.0349        | 13.6137        |
| 1850000000.        | 53.9943        | 13.6554        |
| 1860000000.        | 53.9609        | 13.6905        |
| 1870000000.        | 53.9434        | 13.7444        |
| 1880000000.        | 53.8978        | 13.7658        |
| 1890000000.        | 53.8756        | 13.8061        |
| <b>1900000000.</b> | <b>53.8416</b> | <b>13.8394</b> |
| 1910000000.        | 53.7896        | 13.8902        |

The conductivity (σ) can be given as:

$$\sigma = \omega \epsilon_0 e'' = 2 \pi f \epsilon_0 e''$$

where  $f = \text{target } f * 10^6$

$\epsilon_0 = 8.854 * 10^{-12}$

Simulating Liquid Dielectric Parameters Check Result @ Muscle 1900 MHz

Room Ambient Temperature = 23°C; Relative humidity = 42%

Measured by: Sunny Shih

| Simulating Liquid |            |            | Parameters |         | Measured                                 | Target  | Deviation (%) | Limit (%) |     |
|-------------------|------------|------------|------------|---------|--|---------|---------------|-----------|-----|
| f (MHz)           | Temp. (°C) | Depth (cm) |            |         |  |         |               |           |     |
| 1900              | 22         | 15         | e'         | 53.5749 | Relative Permittivity (ε <sub>r</sub> ): | 53.5749 | 53.3          | 0.52      | ± 5 |
|                   |            |            | e"         | 14.2586 | Conductivity (σ):                        | 1.50713 | 1.52          | -0.85     | ± 5 |

Liquid Check

Ambient temperature: 23 deg. C; Liquid temperature: 22 deg C  
 October 19, 2006 12:00 PM

| Frequency          | e'             | e"             |
|--------------------|----------------|----------------|
| 1750000000.        | 54.1736        | 13.5085        |
| 1760000000.        | 54.0818        | 13.6150        |
| 1770000000.        | 54.0388        | 13.6980        |
| 1780000000.        | 54.0213        | 13.7479        |
| 1790000000.        | 54.0581        | 13.7981        |
| 1800000000.        | 54.0528        | 13.8482        |
| 1810000000.        | 54.0293        | 13.8628        |
| 1820000000.        | 53.9811        | 13.8150        |
| 1830000000.        | 53.9854        | 13.7790        |
| 1840000000.        | 53.9553        | 13.8333        |
| 1850000000.        | 53.8660        | 13.9491        |
| 1860000000.        | 53.7239        | 14.0442        |
| 1870000000.        | 53.5959        | 14.0797        |
| 1880000000.        | 53.5504        | 14.1028        |
| 1890000000.        | 53.5706        | 14.1788        |
| <b>1900000000.</b> | <b>53.5749</b> | <b>14.2586</b> |
| 1910000000.        | 53.5711        | 14.2726        |
| 1920000000.        | 53.5772        | 14.2294        |
| 1930000000.        | 53.6399        | 14.2055        |
| 1940000000.        | 53.6376        | 14.2655        |
| 1950000000.        | 53.5636        | 14.3213        |

The conductivity (σ) can be given as:

$$\sigma = \omega \epsilon_0 e'' = 2 \pi f \epsilon_0 e''$$

where  $f = \text{target } f * 10^6$

$$\epsilon_0 = 8.854 * 10^{-12}$$

## 5 SYSTEM PERFORMANCE CHECK

The system performance check is performed prior to any usage of the system in order to guarantee reproducible results. The system performance check verifies that the system operates within its specifications of  $\pm 10\%$ .

### System Performance Check Measurement Conditions

- The measurements were performed in the flat section of the SAM twin phantom filled with Body simulating liquid of the following parameters.
- The DASY4 system with an Isotropic E-Field Probe EX3DV3-SN: 3531 was used for the measurements.
- The dipole was mounted on the small tripod so that the dipole feed point was positioned below the center marking of the flat phantom section and the dipole was oriented parallel to the body axis (the long side of the phantom). The standard measuring distance was 10 mm (above 1 GHz) and 15 mm (below 1 GHz) from dipole center to the simulating liquid surface.
- The coarse grid with a grid spacing of 15 mm was aligned with the dipole.  
For 5 GHz band - The coarse grid with a grid spacing of 10 mm was aligned with the dipole.
- Special 5 x 5 x 7 fine cube was chosen for cube integration(dx=dy=7.5mm; dz=5mm).  
For 5 GHz band - Special 8x8x8 fine cube was chosen for cube integration(dx=dy=4.3mm; dz=3mm)
- Distance between probe sensors and phantom surface was set to 4 mm.  
For 5 GHz band - Distance between probe sensors and phantom surface was set to 2.0mm
- The dipole input power (forward power) was 250 mW $\pm 3\%$ .
- The results are normalized to 1 W input power.

### Reference SAR Values for body-tissue

In the table below, the numerical reference SAR values of a SPEAG validation dipoles placed below the flat phantom filled with body-tissue simulating liquid are given. The reference SAR values were calculated using the finite-difference time-domain method and the geometry parameters.

| Dipole Type | Distance (mm) | Frequency (MHz) | SAR (1g) [W/kg] | SAR (10g) [W/kg] | SAR (peak) [W/kg] |
|-------------|---------------|-----------------|-----------------|------------------|-------------------|
| D450V2      | 15            | 450             | 5.01            | 3.36             | 7.22              |
| D835V2      | 15            | 835             | <b>9.71</b>     | <b>6.38</b>      | 14.1              |
| D900V2      | 15            | 900             | 11.1            | 7.17             | 16.3              |
| D1450V2     | 10            | 1450            | 29.6            | 16.6             | 49.8              |
| D1800V2     | 10            | 1800            | 38.5            | 20.3             | 67.5              |
| D1900V2     | 10            | 1900            | <b>39.8</b>     | <b>20.8</b>      | 69.6              |
| D2000V2     | 10            | 2000            | 40.9            | 21.2             | 71.5              |
| D2450V2     | 10            | 2450            | 51.2            | 23.7             | 97.6              |

Note: All SAR values normalized to 1 W forward power.

**System Validation Dipole: D835V2 SN:4d002**

Date: October 2, 2006

Room Ambient Temperature = 23°C; Relative humidity = 40%

Measured by: Ninous Davoudi

| Body Simulating Liquid |            |            | SAR (mW/g) |      | Normalized to 1 W | Target | Deviation (%) | Limit (%) |
|------------------------|------------|------------|------------|------|-------------------|--------|---------------|-----------|
| f (MHz)                | Temp. (°C) | Depth (cm) |            |      |                   |        |               |           |
| 835                    | 22         | 15         | 1g         | 2.46 | 9.84              | 9.71   | 1.34          | ± 10      |
|                        |            |            | 10g        | 1.62 | 6.48              | 6.38   | 1.57          | ± 10      |

Date: October 3, 2006

Room Ambient Temperature = 23°C; Relative humidity = 40%

Measured by: Ninous Davoudi

| Body Simulating Liquid |            |            | SAR (mW/g) |      | Normalized to 1 W | Target | Deviation (%) | Limit (%) |
|------------------------|------------|------------|------------|------|-------------------|--------|---------------|-----------|
| f (MHz)                | Temp. (°C) | Depth (cm) |            |      |                   |        |               |           |
| 835                    | 22         | 15         | 1g         | 2.48 | 9.92              | 9.71   | 2.16          | ± 10      |
|                        |            |            | 10g        | 1.63 | 6.52              | 6.38   | 2.19          | ± 10      |

Date: October 18, 2006

Room Ambient Temperature = 23°C; Relative humidity = 40%

Measured by: Ninous Davoudi

| Body Simulating Liquid |            |            | SAR (mW/g) |      | Normalized to 1 W | Target | Deviation (%) | Limit (%) |
|------------------------|------------|------------|------------|------|-------------------|--------|---------------|-----------|
| f (MHz)                | Temp. (°C) | Depth (cm) |            |      |                   |        |               |           |
| 835                    | 22         | 15         | 1g         | 2.48 | 9.92              | 9.71   | 2.16          | ± 10      |
|                        |            |            | 10g        | 1.64 | 6.56              | 6.38   | 2.82          | ± 10      |

**System Validation Dipole: D1900V2 SN:5d043**

Date: October 3, 2006

Room Ambient Temperature = 23°C; Relative humidity = 40%

Measured by: Ninous Davoudi

| Body Simulating Liquid |            |            | SAR (mW/g) |      | Normalized to 1 W | Target | Deviation (%) | Limit (%) |
|------------------------|------------|------------|------------|------|-------------------|--------|---------------|-----------|
| f (MHz)                | Temp. (°C) | Depth (cm) |            |      |                   |        |               |           |
| 1900                   | 22         | 15         | 1g         | 9.46 | 37.84             | 39.8   | -4.92         | ± 10      |
|                        |            |            | 10g        | 5.04 | 20.16             | 20.8   | -3.08         | ± 10      |

Date: October 19, 2006

Room Ambient Temperature = 23°C; Relative humidity = 42%

Measured by: Sunny Shih

| Body Simulating Liquid |            |            | SAR (mW/g) |      | Normalized to 1 W | Target | Deviation (%) | Limit (%) |
|------------------------|------------|------------|------------|------|-------------------|--------|---------------|-----------|
| f (MHz)                | Temp. (°C) | Depth (cm) |            |      |                   |        |               |           |
| 1900                   | 22         | 15         | 1g         | 9.75 | 39                | 39.8   | -2.01         | ± 10      |
|                        |            |            | 10g        | 5.2  | 20.8              | 20.8   | 0.00          | ± 10      |



## 6 SAR MEASUREMENT PROCEDURE

A summary of the procedure follows:

- a) A measurement of the SAR value at a fixed location is used as a reference value for assessing the power drop of the EUT. The SAR at this point is measured at the start of the test, and then again at the end of the test.
- b) The SAR distribution at the exposed flat section of the flat phantom is measured at a distance of 4 mm from the inner surface of the shell. The area covers the entire dimension of the EUT and the horizontal grid spacing is 15 mm x 15 mm. Based on this data, the area of the maximum absorption is determined by Spline interpolation. The first Area Scan covers the entire dimension of the EUT to ensure that the hotspot was correctly identified.

For 5 GHz band - The SAR distribution at the exposed flat section of the flat phantom is measured at a distance of 2.0 mm from the inner surface of the shell. The area covers the entire dimension of the EUT and the horizontal grid spacing is 10 mm x 10 mm. Based on this data, the area of the maximum absorption is determined by Spline interpolation. The first Area Scan covers the entire dimension of the EUT to ensure that the hotspot was correctly identified.

- c) Around this point, a volume of X=Y= 30 and Z=21 mm is assessed by measuring 5 x 5 x 7 mm points. On the basis of this data set, the spatial peak SAR value is evaluated with the following procedure:

For 5 GHz band - Around this point, a volume of X=Y=Z=30 mm is assessed by measuring 8 x 8 x 8 mm points. On the basis of this data set, the spatial peak SAR value is evaluated with the following procedure:

- (i) The data at the surface are extrapolated, since the centre of the dipoles is 1.2 mm away from the tip of the probe and the distance between the surface and the lowest measuring point is 1.3 mm. The extrapolation is based on a least square algorithm. A polynomial of the fourth order is calculated through the points in z-axes. This polynomial is then used to evaluate the points between the surface and the probe tip.
- (ii) The maximum interpolated value is searched with a straightforward algorithm. Around this maximum the SAR values averaged over the spatial volumes (1 g and 10 g) are computed using the 3D-Spline interpolation algorithm. The 3D-Spline is composed of three one-dimensional splines with the "Not a knot"- condition (in x, y and z-direction). The volume is integrated with the trapezoidal – algorithm. One thousand points (10 x 10 x 10) are interpolated to calculate the averages.
- (iii) All neighbouring volumes are evaluated until no neighbouring volume with a higher average value is found.
- (iv) The SAR value at the same location as in Step (a) is again measured to evaluate the actual power drift.

## 6.1 DASY4 SAR MEASUREMENT PROCEDURE

### Step 1: Power Reference Measurement

The Power Reference Measurement and Power Drift Measurements are for monitoring the power drift of the device under test in the batch process. The Minimum distance of probe sensors to surface determines the closest measurement point to phantom surface. The minimum distance of probe sensors to surface is 2.1 mm. This distance cannot be smaller than the Distance of sensor calibration points to probe tip as defined in the probe properties (for example, 1.2 mm for an EX3DV3 probe type).

### Step 2: Area Scan

The Area Scan is used as a fast scan in two dimensions to find the area of high field values, before doing a fine measurement around the hot spot. The sophisticated interpolation routines implemented in DASY4 software can find the maximum locations even in relatively coarse grids. When an Area Scan has measured all reachable points, it computes the field maximal found in the scanned area, within a range of the global maximum. The range (in dB) is specified in the standards for compliance testing. For example, a 2 dB range is required in IEEE Standard 1528, EN 50361 and IEC 62209 standards, whereby 3 dB is a requirement when compliance is assessed in accordance with the ARIB standard (Japan). If only one Zoom Scan follows the Area Scan, then only the absolute maximum will be taken as reference. For cases where multiple maximums are detected, the number of Zoom Scans has to be increased accordingly.

### Step 3: Zoom Scan

Zoom Scans are used to assess the peak spatial SAR values within a cubic averaging volume containing 1 g and 10 g of simulated tissue. The Zoom Scan measures 5 x 5 x 7 points within a cube whose base faces are centered on the maxima found in a preceding area scan job within the same procedure. When the measurement is done, the Zoom Scan evaluates the averaged SAR for 1 g and 10 g and displays these values next to the job's label.

For 5 GHz band – Same as above except the Zoom Scan measures 8 x 8 x 8 points.

### Step 4: Power drift measurement

The Power Drift Measurement measures the field at the same location as the most recent power reference measurement within the same procedure, and with the same settings. The Power Drift Measurement gives the field difference in dB from the reading conducted within the last Power Reference Measurement. This allows a user to monitor the power drift of the device under test within a batch process. The measurement procedure is the same as Step 1.

### Step 5: Z-Scan

The Z Scan measures points along a vertical straight line. The line runs along the Z-axis of a one-dimensional grid. In order to get a reasonable extrapolation, the extrapolated distance should not be larger than the step size in Z-direction.

## 7 PROCEDURE USED TO ESTABLISH TEST SIGNAL

The following procedures had been used to prepare the EUT for the SAR test.

The following setting is used to prepare the EUT in GSM850/1900MHz bands for the SAR test.

Agilent 8960 series 10 E5515C, Wireless Communication Test Set is used to control the EUT and measure the output power.

The following setting was used to establish the signal.

**System Config:** GSM/GPRS Mobile Test  
E1968A A.06.31

**Call Params:**

BCH → Cell Band: GSM850/PCS  
TCH → Traffic Band: GSM850/PCS  
Traffic Channel: 128/192/251 or 512/661/810  
MS Tx Level: 3 (33dBm) for cell band; 3 (30 dBm) for PCS band  
MultiSlot Config: 2up, 3down

PDTCH → Traffic Band: GSM850/PCS  
Traffic Channel: 128/192/251 or 512/661/810  
MS Tx Level: 6 (27dBm) for cell band; 5 (26 dBm) for PCS band  
Coding Scheme: CS-4  
MultiSlot Config: 2up, 3down

**Control:** Active Cell → GSM/GPRS/EGPRS

### GSM850, GPRS

| Channel | Frequency (MHz) | Power (dBm) |
|---------|-----------------|-------------|
| 128     | 824.2           | 32.15       |
| 192     | 837.0           | 32.20       |
| 251     | 848.8           | 32.12       |

### GSM1900, GPRS

| Channel | Frequency (MHz) | Power (dBm) |
|---------|-----------------|-------------|
| 512     | 1850.2          | 29.76       |
| 661     | 1880.0          | 29.69       |
| 810     | 1909.8          | 29.24       |

### GSM850, EGPRS

| Channel | Frequency (MHz) | Power (dBm) |
|---------|-----------------|-------------|
| 128     | 824.2           | 27.89       |
| 192     | 837.0           | 27.73       |
| 251     | 848.8           | 27.70       |

### GSM1900, EGPRS

| Channel | Frequency (MHz) | Power (dBm) |
|---------|-----------------|-------------|
| 512     | 1850.2          | 27.53       |
| 661     | 1880.0          | 27.42       |
| 810     | 1909.8          | 27.43       |

The following settings were used to configure the Wireless Communications Test Set, Agilent 8960 Series 10, E5515C.

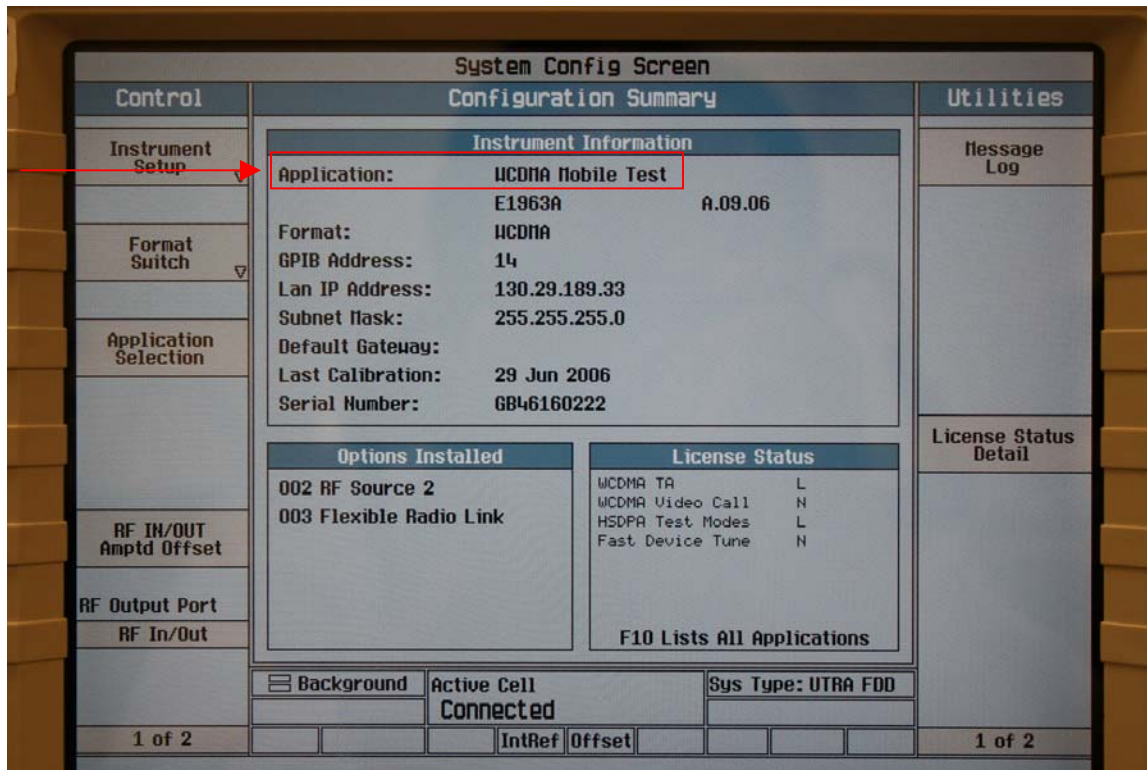
**Application:** WCDMA Mobile Test

**Channel Type:** 12.2k RMC

**Paging Service:** RB Test Mode

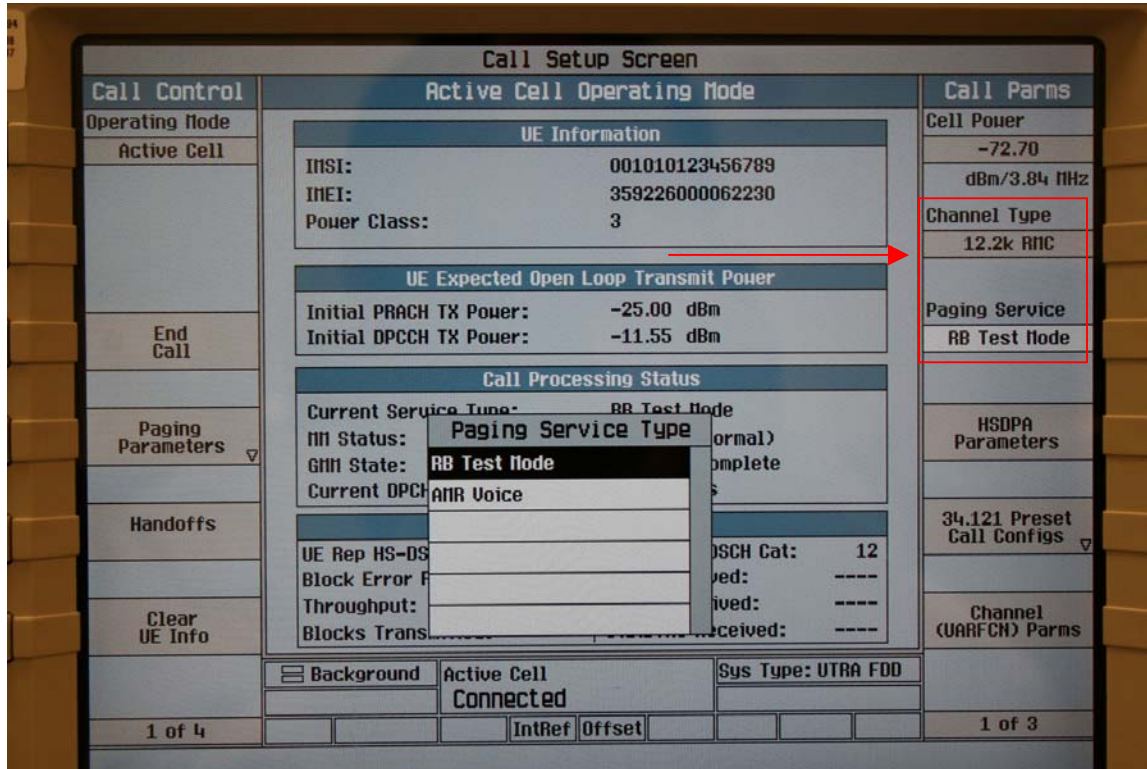
**DL DTCH Data:** All Ones

**UL CL Power Ctrl Parameters:** All Up bits

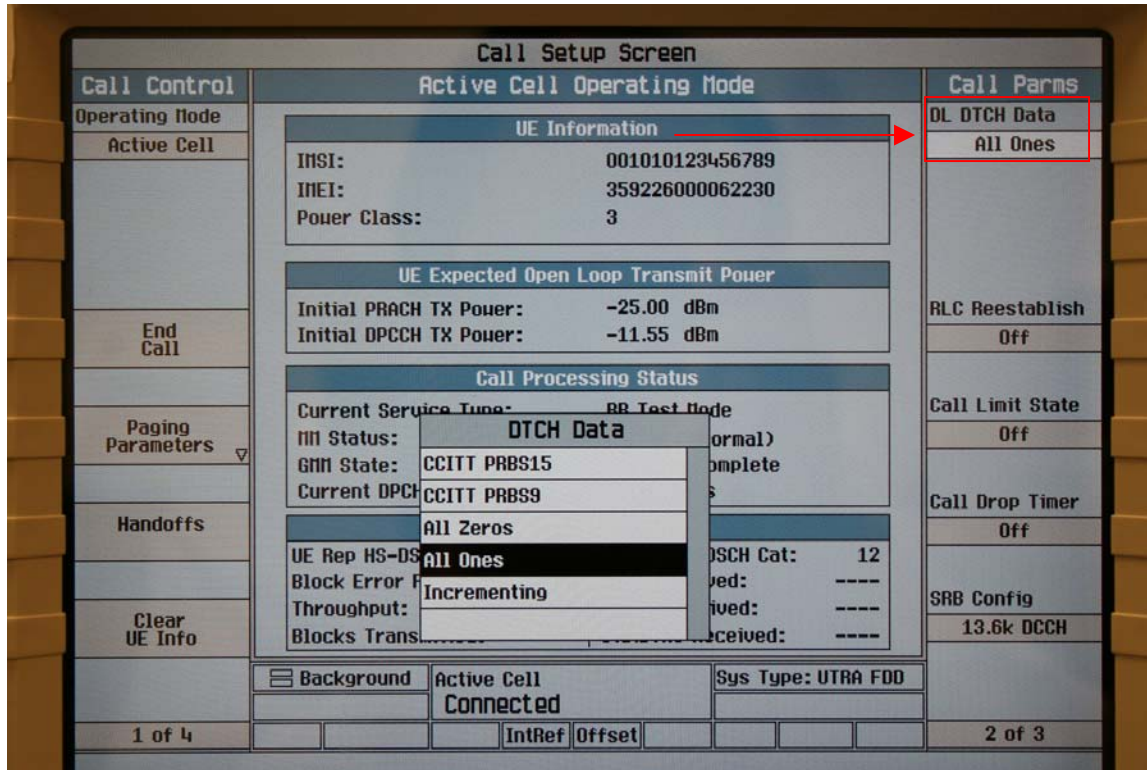


**Channel Type:** 12.2k RMC

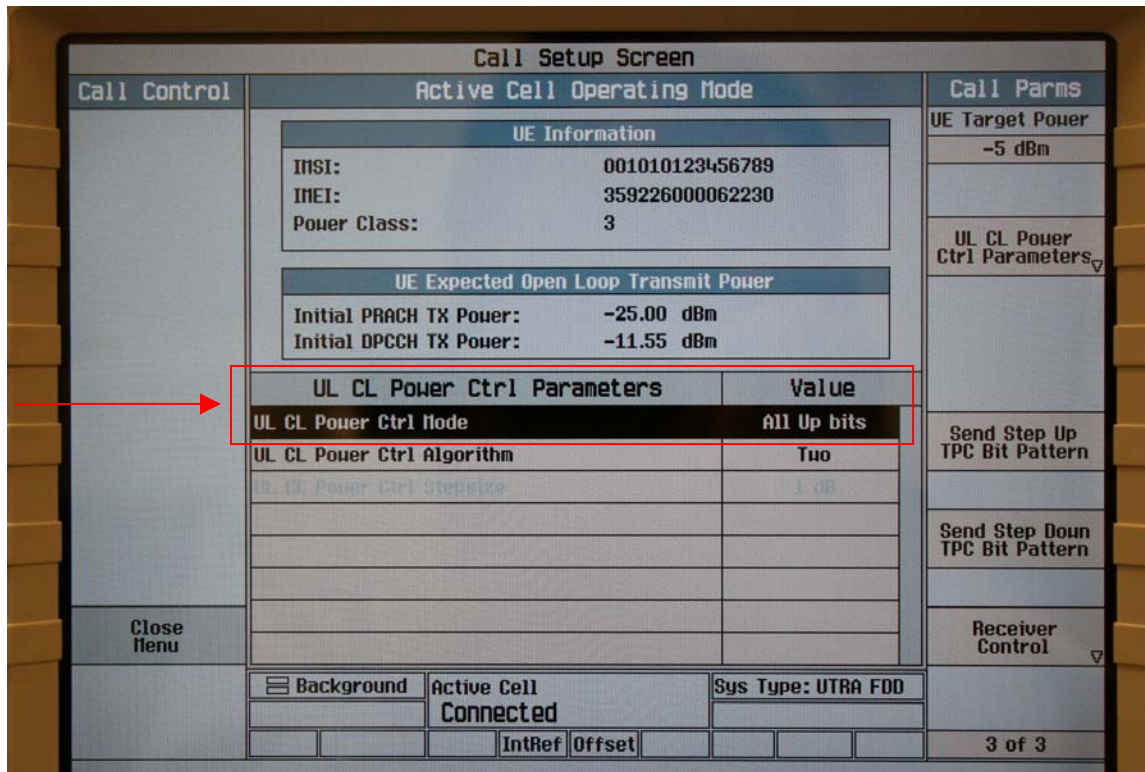
**Paging Service:** RB Test Mode



DL DTCH Data: All Ones



**UL CL Power Ctrl Parameters: All Up bits**



**Conducted powers were measured prior to SAR measurement:**

**W-CDMA850**

The cable assembly insertion loss of 8.30 dB (including 8.0 dB pad and 0.3 dB cable) was entered as an offset in the power meter to allow for direct reading of power.

| Channel | Frequency (MHz) | Power (dBm) |
|---------|-----------------|-------------|
| 4132    | 826.40          | 23.88       |
| 4182    | 836.40          | 23.94       |
| 4233    | 846.60          | 23.91       |

**W-CDMA1900**

The cable assembly insertion loss of 8.47 dB (including 8 dB pad and 0.3 dB cable) was entered as an offset in the power meter to allow for direct reading of power.

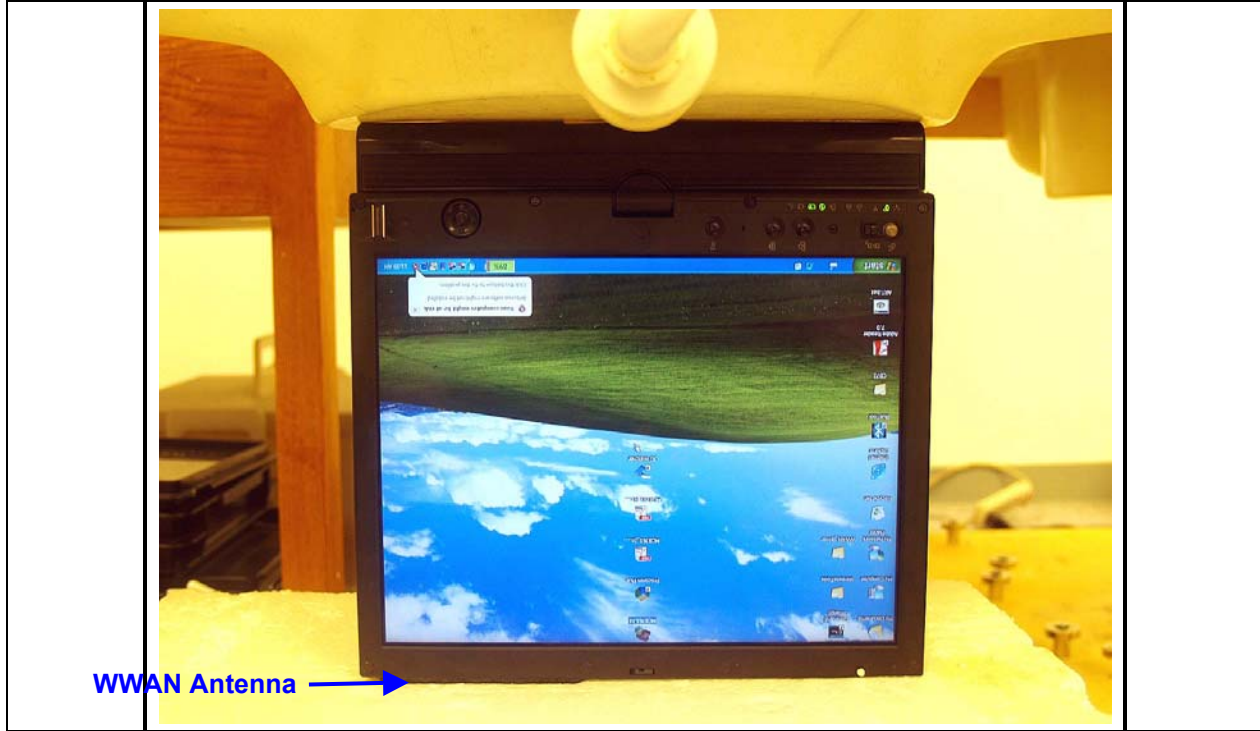
| Channel | Frequency (MHz) | Power (dBm) |
|---------|-----------------|-------------|
| 9262    | 1852.40         | 23.95       |
| 9400    | 1880.00         | 23.19       |
| 9538    | 1907.60         | 23.90       |

### 8 SAR MEASUREMENT RESULTS

The following positions are skipped.

#### LCD EDGE POSITION – PRIMARY LANDSCAPE

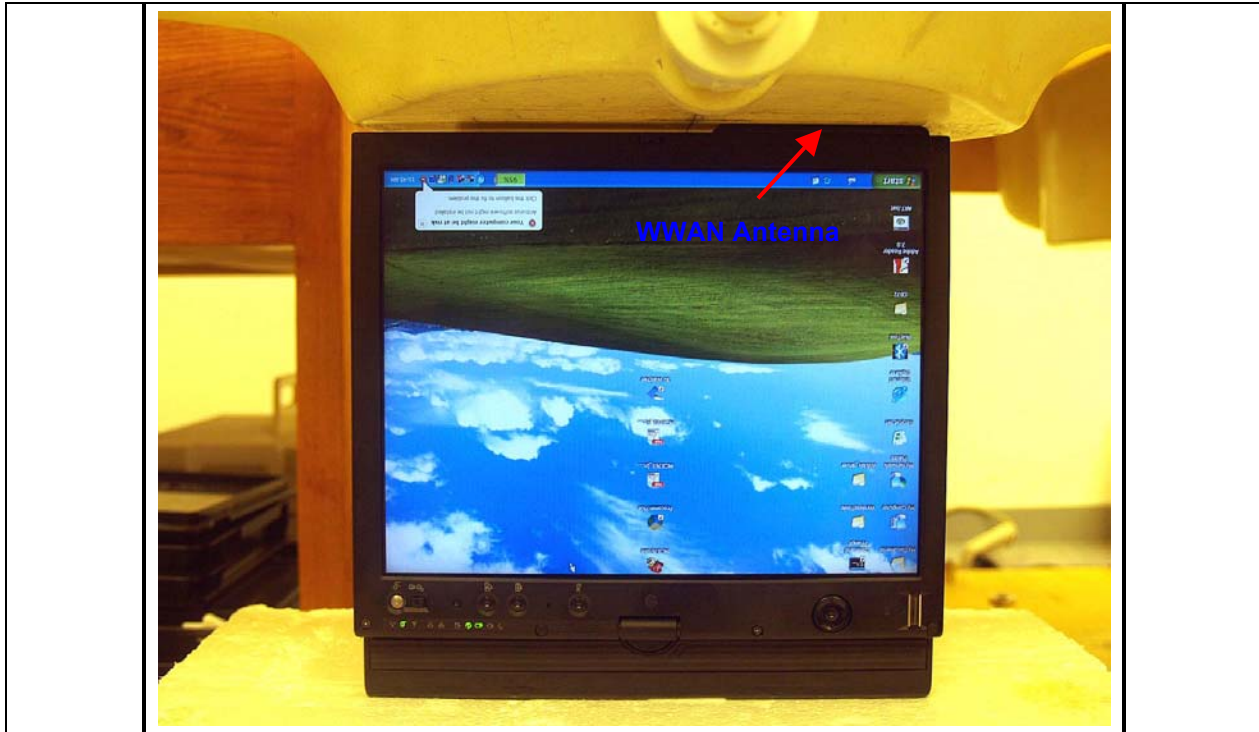
Primary Landscape is skipped since SAR values are too low.





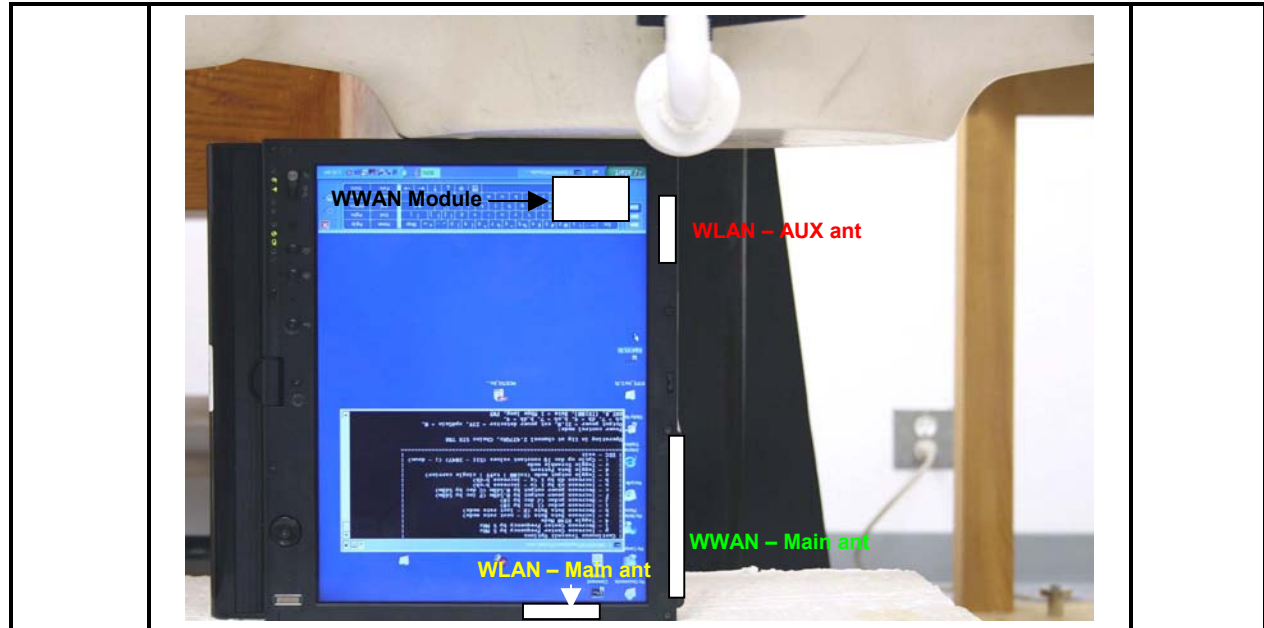
**LCD EDGE POSITION – SECONDARY LANDSCAPE**

Primary Landscape is skipped since WWAN is disabled at this position.



8.1 CELL BAND

8.1.1 EDGE POSITION – PRIMARY PORTRAIT



| <b>GPRS</b>  |         |                           |                     |   |
|--------------|---------|---------------------------|---------------------|---|
| Channel      | f (MHz) | Measured SAR<br>1g (mW/g) | Power Drift<br>(dB) | Extrapolated <sup>1)</sup> SAR<br>1g (mW/g) |
| 128          | 824.2   | 0.183                     | 0.000               | 0.183                                       |
| 192          | 837.0   |                           |                     |   |
| 251          | 848.8   |                           |                     |   |
| <b>EGPRS</b> |         |                           |                     |   |
| Channel      | f (MHz) | Measured SAR<br>1g (mW/g) | Power Drift<br>(dB) | Extrapolated <sup>1)</sup> SAR<br>1g (mW/g) |
| 128          | 824.2   | 0.058                     | 0.000               | 0.058                                       |
| 192          | 837.0   |                           |                     |   |
| 251          | 848.8   |                           |                     |   |
| <b>WCDMA</b> |         |                           |                     |   |
| Channel      | f (MHz) | Measured SAR<br>1g (mW/g) | Power Drift<br>(dB) | Extrapolated <sup>1)</sup> SAR<br>1g (mW/g) |
| 4132         | 826.4   | 0.074                     | 0.000               | 0.074                                       |
| 4182         | 836.4   |                           |                     |   |
| 4233         | 846.6   |                           |                     |   |

Notes:

- 1) The exact method of extrapolation is  $\text{Measured SAR} \times 10^{(-\text{drift}/10)}$ . The SAR reported at the end of the measurement process by the DASY4 system can be scaled up by the Power drift to determine the SAR at the beginning of the measurement process.
- 2) When measured SAR is less than 3dB limit, testing on high and low channels are optional.
- 3) Please see attachments for the detailed measurement data and plots showing the maximum SAR location of the EUT.

**8.1.2 LCD EDGE POSITION – SECONDARY PORTRAIT**



**GSM GPRS**

| Channel | f (MHz) | Measured SAR<br>1g (mW/g) | Power Drift<br>(dB) | Extrapolated <sup>1)</sup> SAR<br>1g (mW/g) |
|---------|---------|---------------------------|---------------------|---|
| 128     | 824.2   | 0.273                     | -0.180              | 0.285                                       |
| 192     | 837.0   | 0.195                     | -0.074              | 0.198                                       |
| 251     | 848.8   | 0.139                     | 0.000               | 0.139                                       |

**GSM EGPRS**

| Channel | f (MHz) | Measured SAR<br>1g (mW/g) | Power Drift<br>(dB) | Extrapolated <sup>1)</sup> SAR<br>1g (mW/g) |
|---------|---------|---------------------------|---------------------|---|
| 128     | 824.2   |                           |                     |   |
| 192     | 837.0   | 0.067                     | 0.000               | 0.067                                       |
| 251     | 848.8   |                           |                     |   |

**WCDMA**

| Channel | f (MHz) | Measured SAR<br>1g (mW/g) | Power Drift<br>(dB) | Extrapolated <sup>1)</sup> SAR<br>1g (mW/g) |
|---------|---------|---------------------------|---------------------|---|
| 4132    | 826.4   |                           |                     |   |
| 4182    | 836.4   | 0.096                     | 0.000               | 0.096                                       |
| 4233    | 846.6   |                           |                     |   |

Notes:

- 1) The exact method of extrapolation is  $\text{Measured SAR} \times 10^{(-\text{drift}/10)}$ . The SAR reported at the end of the measurement process by the DASY4 system can be scaled up by the Power drift to determine the SAR at the beginning of the measurement process.
- 2) When measured SAR is less than 3dB limit, testing on high and low channels are optional.
- 3) Please see attachments for the detailed measurement data and plots showing the maximum SAR location of the EUT.

**8.1.3 LAP HELD POSITION**



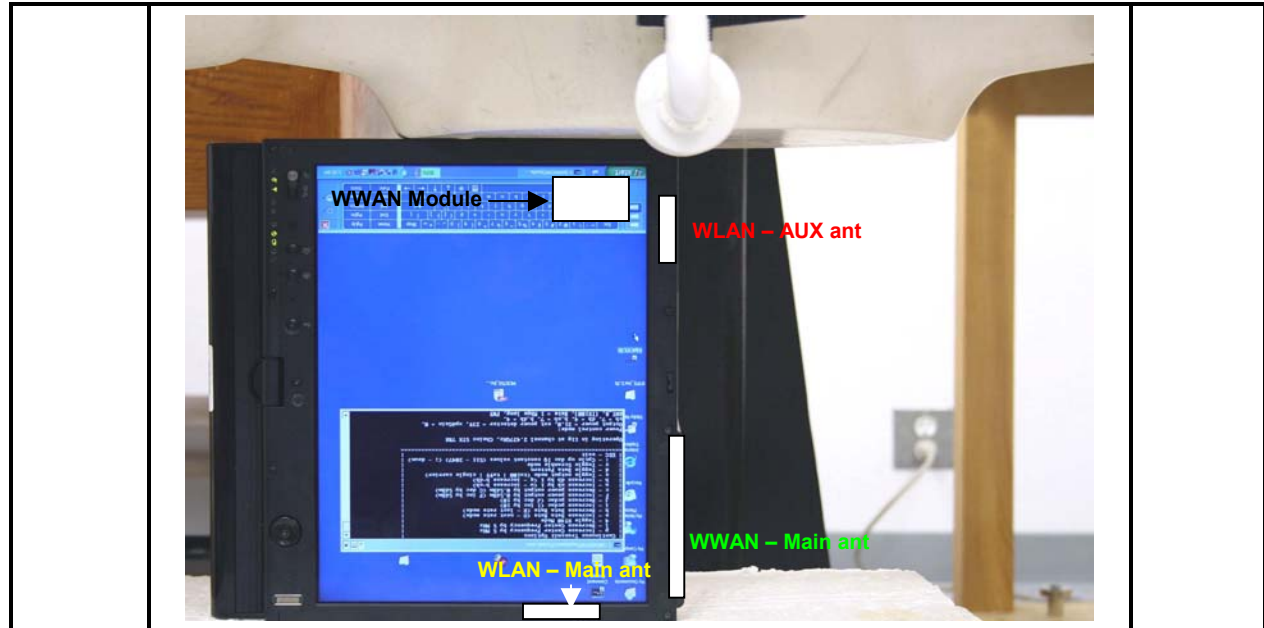
| <b>GPRS</b>  |         |                           |                     |   |
|--------------|---------|---------------------------|---------------------|---|
| Channel      | f (MHz) | Measured SAR<br>1g (mW/g) | Power Drift<br>(dB) | Extrapolated <sup>1)</sup> SAR<br>1g (mW/g) |
| 128          | 824.2   | 0.118                     | -0.131              | 0.122                                       |
| 192          | 837.0   |                           |                     |   |
| 251          | 848.8   |                           |                     |   |
| <b>EGPRS</b> |         |                           |                     |   |
| Channel      | f (MHz) | Measured SAR<br>1g (mW/g) | Power Drift<br>(dB) | Extrapolated <sup>1)</sup> SAR<br>1g (mW/g) |
| 128          | 824.2   | 0.033                     | -0.268              | 0.035                                       |
| 192          | 837.0   |                           |                     |   |
| 251          | 848.8   |                           |                     |   |
| <b>WCDMA</b> |         |                           |                     |   |
| Channel      | f (MHz) | Measured SAR<br>1g (mW/g) | Power Drift<br>(dB) | Extrapolated <sup>1)</sup> SAR<br>1g (mW/g) |
| 4132         | 826.4   | 0.055                     | -0.013              | 0.055                                       |
| 4182         | 836.4   |                           |                     |   |
| 4233         | 846.6   |                           |                     |   |

Notes:

- 1) The exact method of extrapolation is Measured SAR x 10<sup>^(-drift/10)</sup>. The SAR reported at the end of the measurement process by the DASY4 system can be scaled up by the Power drift to determine the SAR at the beginning of the measurement process.
- 2) When measured SAR is less than 3dB limit, testing on high and low channels are optional.
- 3) Please see attachments for the detailed measurement data and plots showing the maximum SAR location of the EUT.

**8.2 PCS BAND**

**8.2.1 EDGE POSITION – PRIMARY PORTRAIT**

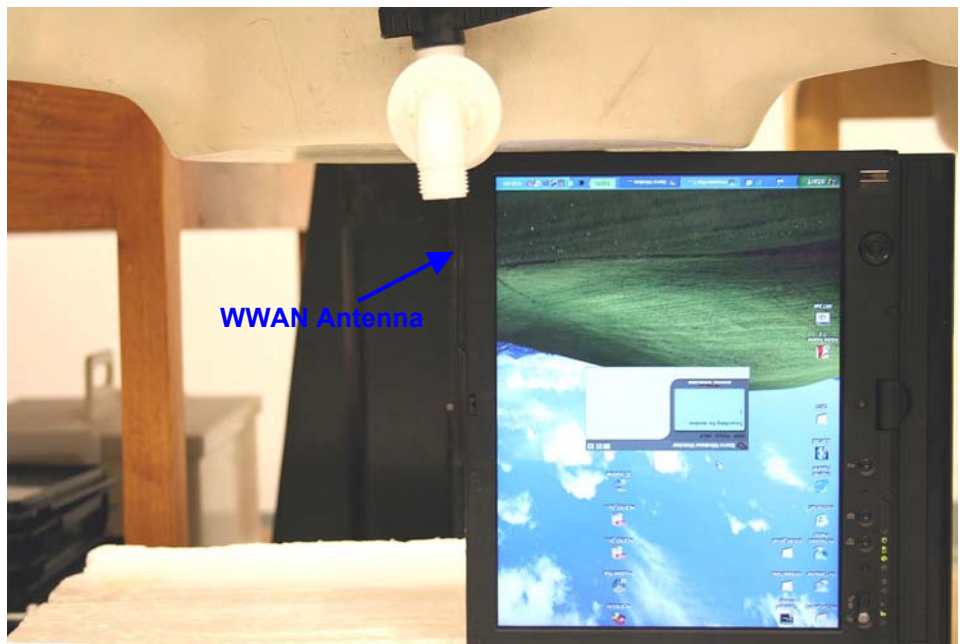


| <b>GPRS</b>  |         |                           |                     |   |
|--------------|---------|---------------------------|---------------------|---|
| Channel      | f (MHz) | Measured SAR<br>1g (mW/g) | Power Drift<br>(dB) | Extrapolated <sup>1)</sup> SAR<br>1g (mW/g) |
| 512          | 1850.2  | 0.025                     | 0.000               | 0.025                                       |
| 661          | 1880.0  |                           |                     |   |
| 810          | 1909.8  |                           |                     |   |
| <b>EGPRS</b> |         |                           |                     |   |
| Channel      | f (MHz) | Measured SAR<br>1g (mW/g) | Power Drift<br>(dB) | Extrapolated <sup>1)</sup> SAR<br>1g (mW/g) |
| 512          | 1850.2  | 0.015                     | 0.000               | 0.015                                       |
| 661          | 1880.0  |                           |                     |   |
| 810          | 1909.8  |                           |                     |   |
| <b>WCDMA</b> |         |                           |                     |   |
| Channel      | f (MHz) | Measured SAR<br>1g (mW/g) | Power Drift<br>(dB) | Extrapolated <sup>1)</sup> SAR<br>1g (mW/g) |
| 9262         | 1852.4  | 0.032                     | 0.000               | 0.032                                       |
| 9400         | 1880.0  |                           |                     |   |
| 9538         | 1907.6  |                           |                     |   |

Notes:

- 1) The exact method of extrapolation is  $\text{Measured SAR} \times 10^{(-\text{drift}/10)}$ . The SAR reported at the end of the measurement process by the DASY4 system can be scaled up by the Power drift to determine the SAR at the beginning of the measurement process.
- 2) When measured SAR is less than 3dB limit, testing on high and low channels are optional.
- 3) Please see attachments for the detailed measurement data and plots showing the maximum SAR location of the EUT.

**8.2.2 LCD EDGE POSITION – SECONDARY PORTRIAT**



**GSM GPRS**

| Channel | f (MHz) | Measured SAR<br>1g (mW/g) | Power Drift<br>(dB) | Extrapolated <sup>1)</sup> SAR<br>1g (mW/g) |
|---------|---------|---------------------------|---------------------|---|
| 512     | 1850.2  | 0.127                     | 0.000               | 0.127                                       |
| 661     | 1880.0  |                           |                     |   |
| 810     | 1909.8  |                           |                     |   |

**GSM EGPRS**

| Channel | f (MHz) | Measured SAR<br>1g (mW/g) | Power Drift<br>(dB) | Extrapolated <sup>1)</sup> SAR<br>1g (mW/g) |
|---------|---------|---------------------------|---------------------|---|
| 512     | 1850.2  | 0.066                     | -0.178              | 0.069                                       |
| 661     | 1880.0  |                           |                     |   |
| 810     | 1909.8  |                           |                     |   |

**WCDMA**

| Channel | f (MHz) | Measured SAR<br>1g (mW/g) | Power Drift<br>(dB) | Extrapolated <sup>1)</sup> SAR<br>1g (mW/g) |
|---------|---------|---------------------------|---------------------|---|
| 9262    | 1852.4  | 0.127                     | -0.084              | 0.129                                       |
| 9400    | 1880.0  |                           |                     |   |
| 9538    | 1907.6  |                           |                     |   |

Notes:

- 1) The exact method of extrapolation is  $\text{Measured SAR} \times 10^{(-\text{drift}/10)}$ . The SAR reported at the end of the measurement process by the DASY4 system can be scaled up by the Power drift to determine the SAR at the beginning of the measurement process.
- 2) When measured SAR is less than 3dB limit, testing on high and low channels are optional.
- 3) Please see attachments for the detailed measurement data and plots showing the maximum SAR location of the EUT.

**8.2.3 LAP HELD POSITION**



| <b>GSM GPRS</b>  |               |                           |                     |   |
|------------------|---------------|---------------------------|---------------------|---|
| Channel          | f (MHz)       | Measured SAR<br>1g (mW/g) | Power Drift<br>(dB) | Extrapolated <sup>1)</sup> SAR<br>1g (mW/g) |
| 512              | 1850.2        | 0.277                     | 0.000               | 0.277                                       |
| 661              | 1880.0        |                           |                     |   |
| 810              | 1909.8        |                           |                     |   |
| <b>GSM EGPRS</b> |               |                           |                     |   |
| Channel          | f (MHz)       | Measured SAR<br>1g (mW/g) | Power Drift<br>(dB) | Extrapolated <sup>1)</sup> SAR<br>1g (mW/g) |
| 512              | 1850.2        | 0.137                     | 0.000               | 0.137                                       |
| 661              | 1880.0        |                           |                     |   |
| 810              | 1909.8        |                           |                     |   |
| <b>WCDMA</b>     |               |                           |                     |   |
| Channel          | f (MHz)       | Measured SAR<br>1g (mW/g) | Power Drift<br>(dB) | Extrapolated <sup>1)</sup> SAR<br>1g (mW/g) |
| <b>9262</b>      | <b>1852.4</b> | <b>0.345</b>              | <b>-0.157</b>       | <b>0.358</b>                                |
| 9400             | 1880.0        | 0.285                     | -0.170              | 0.296                                       |
| 9538             | 1907.6        | 0.276                     | 0.000               | 0.276                                       |

Notes:

- 1) The exact method of extrapolation is  $\text{Measured SAR} \times 10^{(-\text{drift}/10)}$ . The SAR reported at the end of the measurement process by the DASY4 system can be scaled up by the Power drift to determine the SAR at the beginning of the measurement process.
- 2) When measured SAR is less than 3dB limit, testing on high and low channels are optional.
- 3) Please see attachments for the detailed measurement data and plots showing the maximum SAR location of the EUT.

**9 MEASUREMENT UNCERTAINTY**

**9.1 MEASUREMENT UNCERTAINTY FOR 300 MHz – 3000 MHz**

| Uncertainty component  | Tol. (±%) | Probe Dist. | Div.  | Ci (1g) | Ci (10g) | Std. Unc.(±%) |         |
|--|-----------|-------------|-------|---------|----------|---------------|---------|
|  |           |             |       |         |          | Ui (1g)       | Ui(10g) |
| <b>Measurement System</b>  |           |             |       |         |          |               |         |
| Probe Calibration  | 4.80      | N           | 1     | 1       | 1        | 4.80          | 4.80    |
| Axial Isotropy   | 4.70      | R           | 1.732 | 0.707   | 0.707    | 1.92          | 1.92    |
| Hemispherical Isotropy   | 9.60      | R           | 1.732 | 0.707   | 0.707    | 3.92          | 3.92    |
| Boundary Effects   | 1.00      | R           | 1.732 | 1       | 1        | 0.58          | 0.58    |
| Linearity  | 4.70      | R           | 1.732 | 1       | 1        | 2.71          | 2.71    |
| System Detection Limits  | 1.00      | R           | 1.732 | 1       | 1        | 0.58          | 0.58    |
| Readout Electronics  | 1.00      | N           | 1     | 1       | 1        | 1.00          | 1.00    |
| Response Time  | 0.80      | R           | 1.732 | 1       | 1        | 0.46          | 0.46    |
| Integration Time   | 2.60      | R           | 1.732 | 1       | 1        | 1.50          | 1.50    |
| RF Ambient Conditions - Noise  | 1.59      | R           | 1.732 | 1       | 1        | 0.92          | 0.92    |
| RF Ambient Conditions - Reflections  | 0.00      | R           | 1.732 | 1       | 1        | 0.00          | 0.00    |
| Probe Positioner Mechanical Tolerance  | 0.40      | R           | 1.732 | 1       | 1        | 0.23          | 0.23    |
| Probe Positioning With Respect to Phantom Shell                                  | 2.90      | R           | 1.732 | 1       | 1        | 1.67          | 1.67    |
| Extrapolation, interpolation, and integration algorithms for max. SAR evaluation | 3.90      | R           | 1.732 | 1       | 1        | 2.25          | 2.25    |
| <b>Test sample Related</b>   |           |             |       |         |          |               |         |
| Test Sample Positioning  | 1.10      | N           | 1     | 1       | 1        | 1.10          | 1.10    |
| Device Holder Uncertainty  | 3.60      | N           | 1     | 1       | 1        | 3.60          | 3.60    |
| Power and SAR Drift Measurement  | 5.00      | R           | 1.732 | 1       | 1        | 2.89          | 2.89    |
| <b>Phantom and Tissue Parameters</b>   |           |             |       |         |          |               |         |
| Phantom Uncertainty  | 4.00      | R           | 1.732 | 1       | 1        | 2.31          | 2.31    |
| Liquid Conductivity - Target   | 5.00      | R           | 1.732 | 0.64    | 0.43     | 1.85          | 1.24    |
| Liquid Conductivity - Meas.  | 8.60      | N           | 1     | 0.64    | 0.43     | 5.50          | 3.70    |
| Liquid Permittivity - Target   | 5.00      | R           | 1.732 | 0.6     | 0.49     | 1.73          | 1.41    |
| Liquid Permittivity - Meas.  | 3.30      | N           | 1     | 0.6     | 0.49     | 1.98          | 1.62    |
| <b>Combined Standard Uncertainty</b>   | RSS       |             |       |         |          | 11.44         | 10.49   |
| <b>Expanded Uncertainty (95% Confidence Interval)</b>                            | K=2       |             |       |         |          | 22.87         | 20.98   |
| Notes for table  |           |             |       |         |          |               |         |
| 1. Tol. - tolerance in influence quantity  |           |             |       |         |          |               |         |
| 2. N - Nomal   |           |             |       |         |          |               |         |
| 3. R - Rectangular   |           |             |       |         |          |               |         |
| 4. Div. - Divisor used to obtain standard uncertainty                            |           |             |       |         |          |               |         |
| 5. Ci - is te sensitivity coefficient  |           |             |       |         |          |               |         |

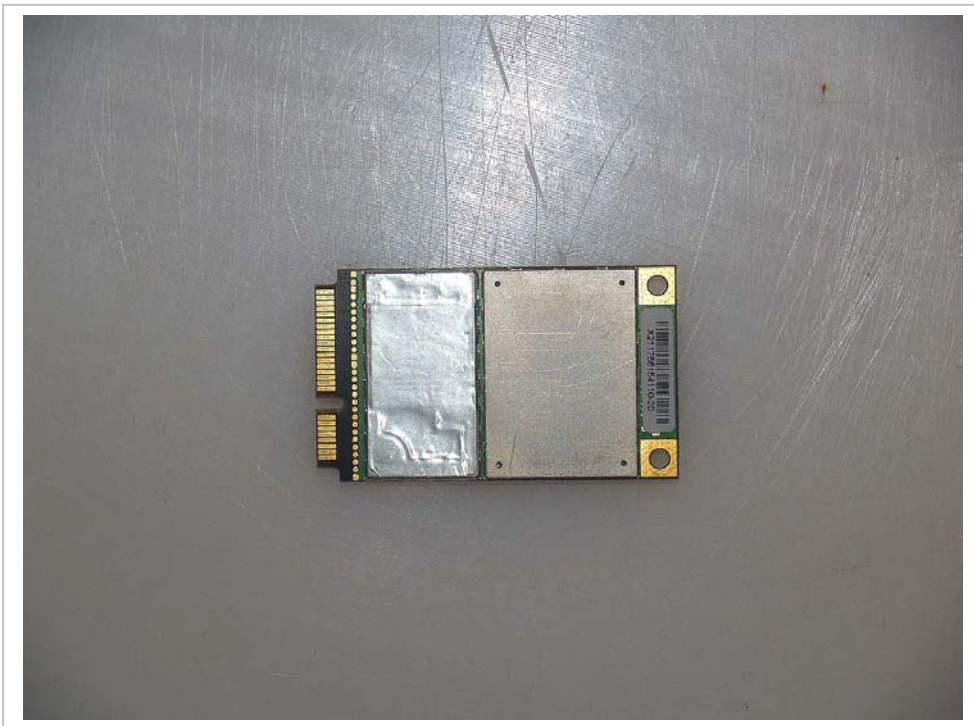


**10 EQUIPMENT LIST AND CALIBRATION**

| <u>Name of Equipment</u>     | <u>Manufacturer</u> | <u>Type/Model</u> | <u>Serial Number</u> | <u>Cal. Due date</u>        |
|------------------------------|---------------------|-------------------|----------------------|-----------------------------|
| Robot - Six Axes             | Stäubli             | RX90BL            | N/A                  | N/A                         |
| Robot Remote Control         | Stäubli             | CS7MB             | 3403-91535           | N/A                         |
| DASY4 Measurement Server     | SPEAG               | SEUMS001BA        | 1041                 | N/A                         |
| Probe Alignment Unit         | SPEAG               | LB (V2)           | 261                  | N/A                         |
| S-Parameter Network Analyzer | Agilent             | 8753ES-6          | US39173569           | 2/9/07                      |
| Electronic Probe kit         | Hewlett Packard     | 85070C            | N/A                  | N/A                         |
| E-Field Probe                | SPEAG               | EX3DV4            | 3552                 | 5/30/07                     |
| Thermometer                  | ERTCO               | 639-1S            | 1718                 | 1/11/07                     |
| SAM Phantom (SAM1)           | SPEAG               | TP-1185           | QD000P40CA           | N/A                         |
| SAM Phantom (SAM2)           | SPEAG               | TP-1015           | N/A                  | N/A                         |
| Data Acquisition Electronics | SPEAG               | DAE4              | 558                  | 1/20/07                     |
| System Validation Dipole     | SPEAG               | D835V2            | 4d002                | 1/23/08                     |
| System Validation Dipole     | SPEAG               | D1900V2           | 5d043                | 1/29/08                     |
| Power Meter                  | Giga-tronics        | 8651A             | 8651404              | 12/27/06                    |
| Power Sensor                 | Giga-tronics        | 80701A            | 1834588              | 12/27/07                    |
| Amplifier                    | Mini-Circuits       | ZVE-8G            | 0360                 | N/A                         |
| Amplifier                    | Mini-Circuits       | ZHL-42W           | D072701-5            | N/A                         |
| Radio Communication Tester   | Rohde & Schwarz     | CMU 200           | 838114/032           | 3/21/07                     |
| Radio Communication Tester   | Agilent             | E1968A            | GB46160222           | 1/29/2007                   |
| Simulating Liquid            | CCS                 | M835              | N/A                  | Within 24 hrs of first test |
| Simulating Liquid            | CCS                 | M1900             | N/A                  | Within 24 hrs of first test |

11 PHOTOS

DUT



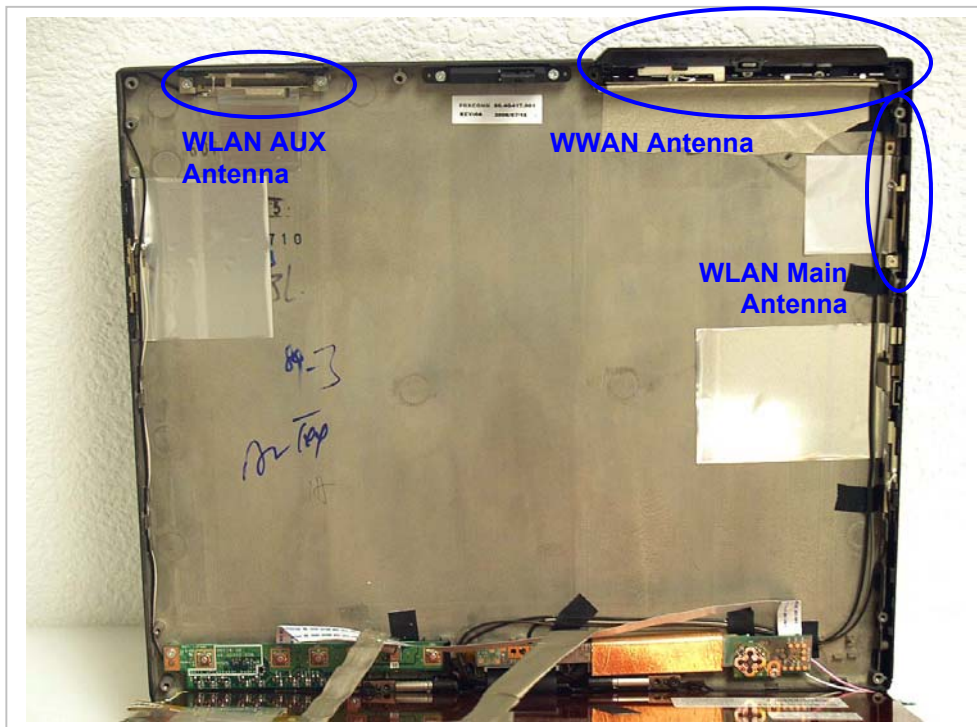
Laptop mode



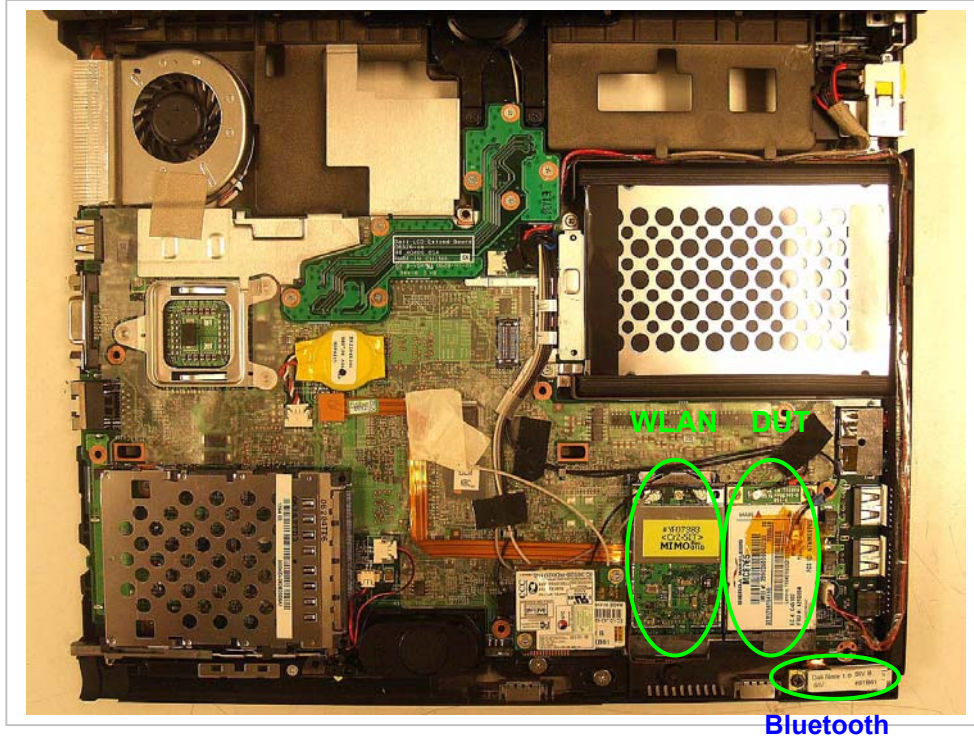
Tablet mode



Antenna Location



DUT Location



**12 ATTACHMENTS**

| <b>No.</b> | <b>Contents</b>  | <b>No. Of Pages</b> |
|------------|--|---------------------|
| 1          | System Performance Check Plots                             | 10                  |
| 2-1        | SAR Test Plots – Cell band                                 | 12                  |
| 2-2        | SAR Test Plots – PCS Band                                  | 12                  |
| 3          | Certificate of E-Field Probe - EXDV4SN3552                 | 9                   |
| 4          | Certificate of System Validation Dipole - D835V2 SN:4d002  | 9                   |
| 5          | Certificate of System Validation Dipole - D1900V2 SN:5d043 | 9                   |

**END OF REPORT**