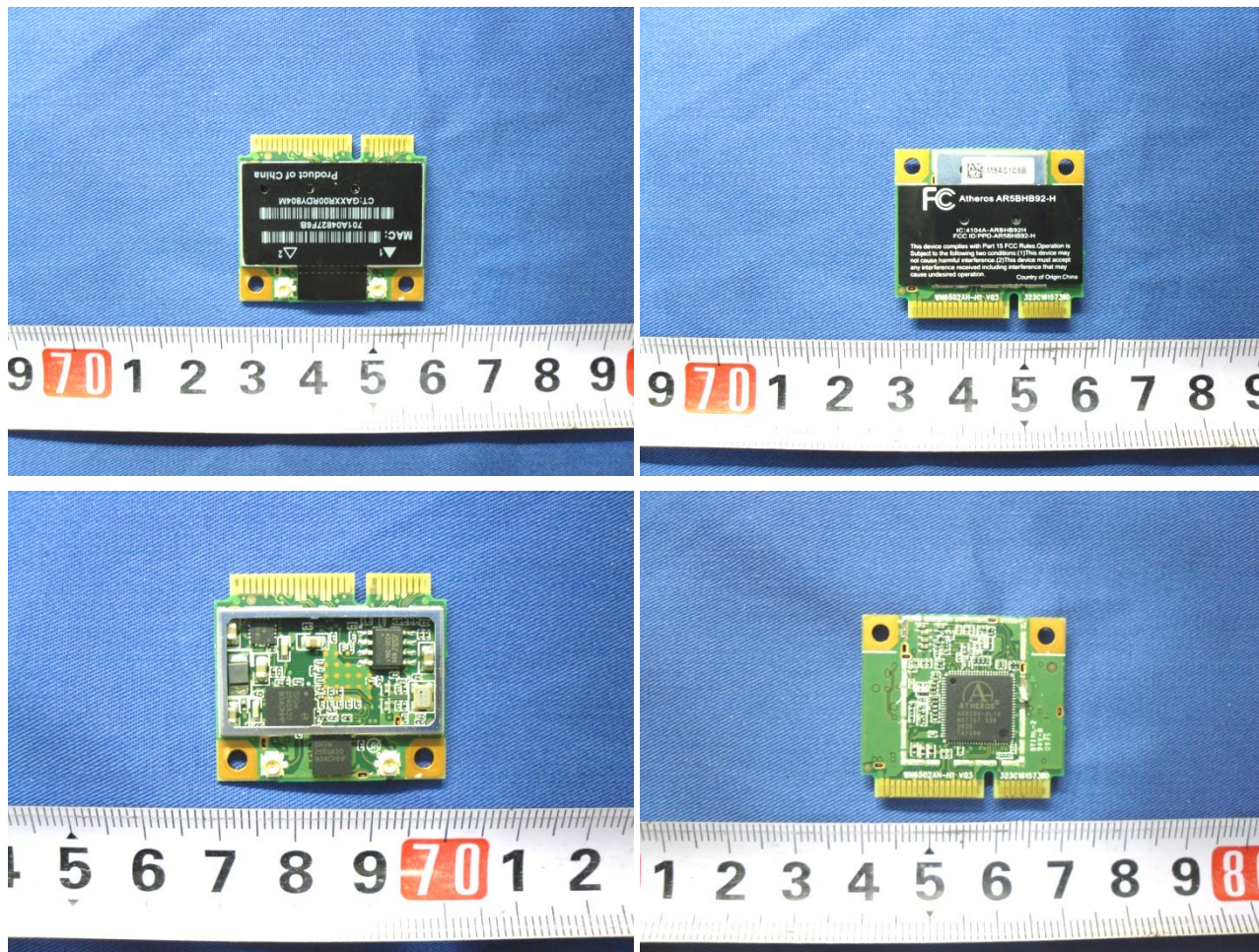


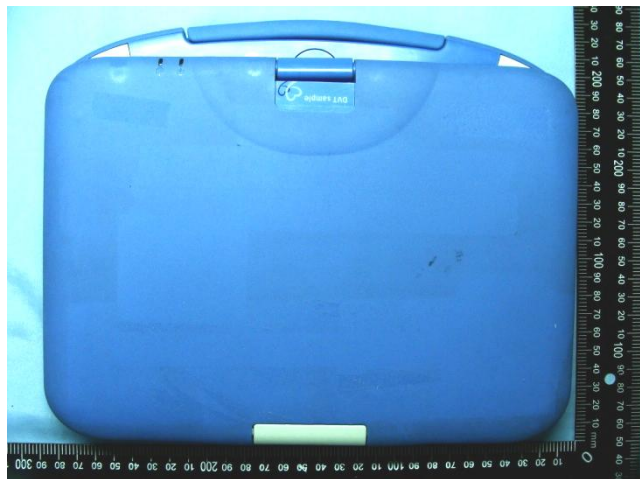
Appendix D. Product Photos

DUT: WLAN Module (Brand Name: Atheros / Model Name: AR5BHB92)



Host: Convertible Tablet Computer

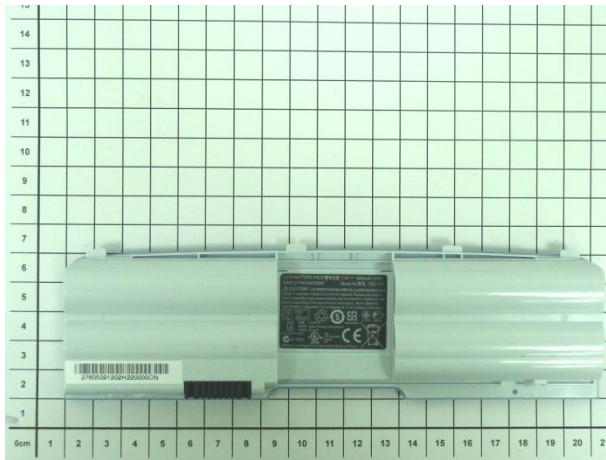
Model Name: NL2 (The“*”can be 0-9, A-Z or blank for the marketing purpose)**



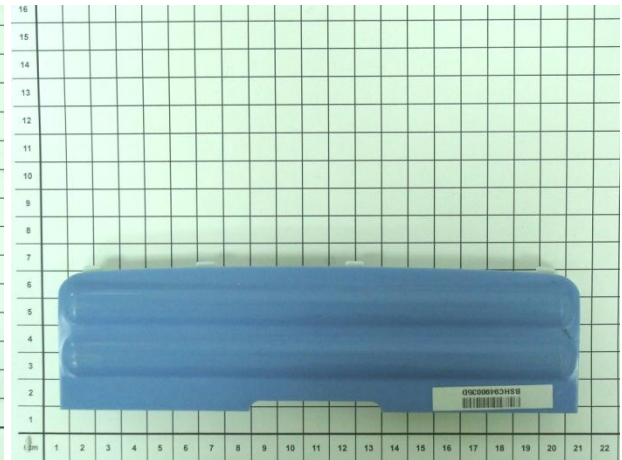
DUT with Thin Battery (4400 mAh)



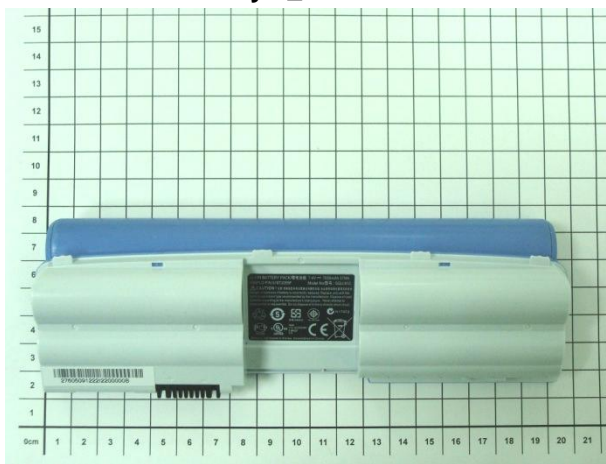
DUT with Thick Battery (7650 mAh)



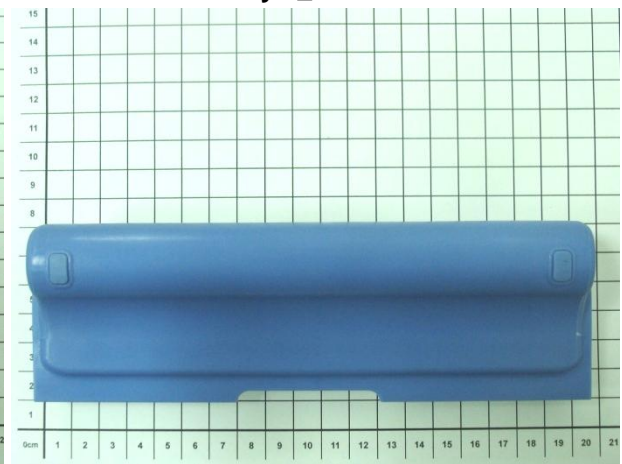
Battery 1_Front View



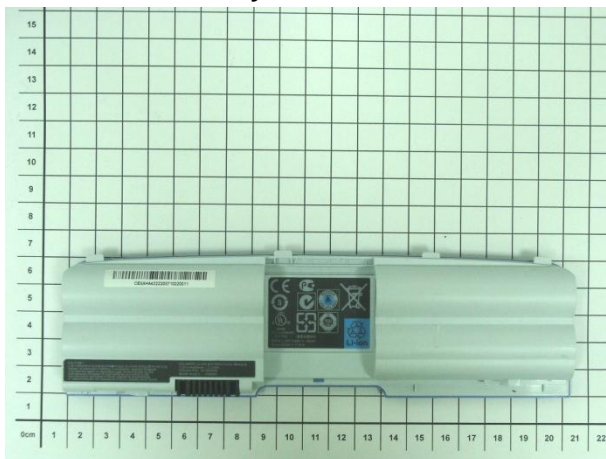
Battery 1_Rear View



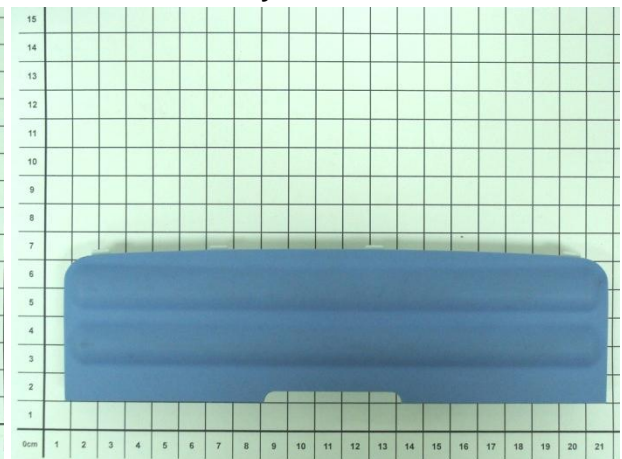
Battery 2_Front View



Battery 2_Rear View



Battery 3_Front View



Battery 3_Rear View

Appendix E. Test Setup Photos



Fig 9.1 Bottom of Laptop Touching with 0 cm Air Gap (DUT with Battery 1)

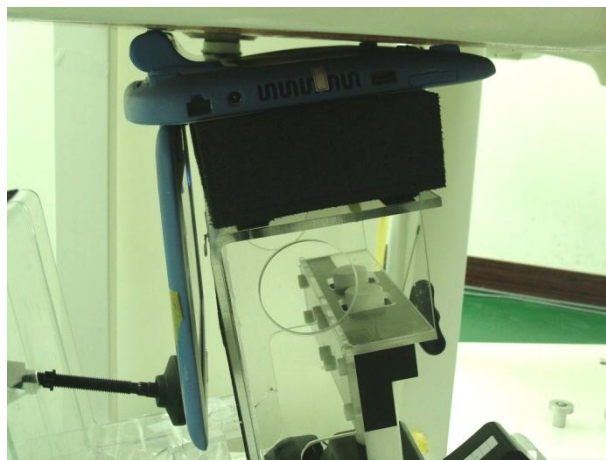


Fig 9.2 Bottom of Laptop Touching with 0 cm Air Gap (DUT with Battery 2)



Fig 9.3 Bottom of Laptop Touching with 0 cm Air Gap (DUT with Battery 3)



Fig 9.4 Bottom of Tablet Touching with 0 cm Air Gap (DUT with Battery 1)



Fig 9.5 Bottom of Tablet Touching with 0 cm Air Gap (DUT with Battery 2)



Fig 9.6 Bottom of Tablet Touching with 0 cm Air Gap (DUT with Battery 3)

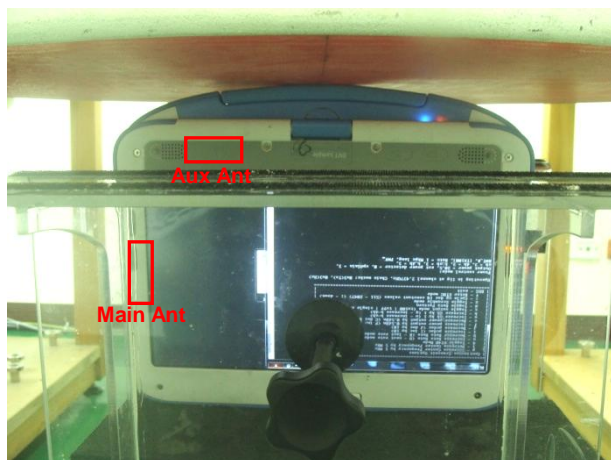


Fig 9.7 Primary Landscape

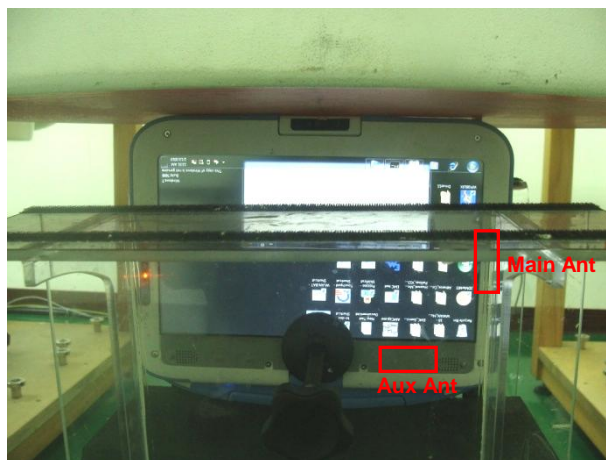


Fig 9.8 Secondary Landscape

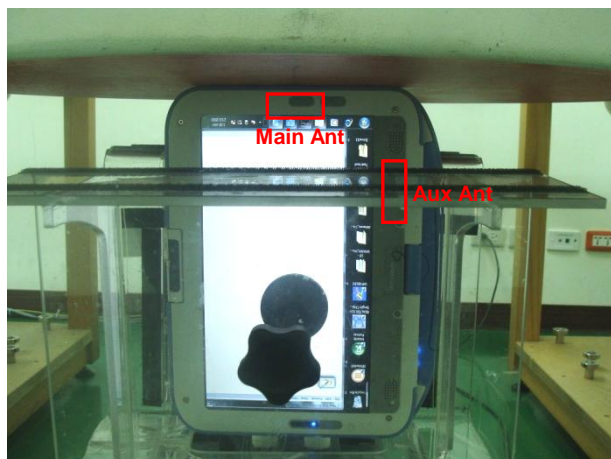


Fig 9.9 Primary Portrait

Note: The test position of Secondary Portrait wasn't performed because the distance between WLAN antenna and this edge was larger than 5 cm. We expect that the SAR value for this position will very low.