

Test Laboratory: Compliance Certification Services Inc.

## **D2450V2 SN-728 Body**

**DUT: Dipole 2450 MHz; Type: D2450V2; Serial: D2450V2 - SN:728**

Communication System: CW2450; Frequency: 2450 MHz; Duty Cycle: 1:1

Medium parameters used:  $f = 2450$  MHz;  $\sigma = 1.93$  mho/m;  $\epsilon_r = 51.7$ ;  $\rho = 1000$  kg/m<sup>3</sup>

Phantom section: Flat Section

Air Temperature: 24.6 deg C; Liquid Temperature: 23.6 deg C

Area Scan Find Secondary Maximum Within 2dB and with a peak SAR value greater than 0.0012W/kg

DASY4 Configuration:

- Probe: EX3DV4 - SN3554; ConvF(5.93, 5.93, 5.93);
- Sensor-Surface: 2.5mm (Mechanical Surface Detection)
- Electronics: DAE4 Sn558; Calibrated: 9/19/2008
- Phantom: Flat Phantom ELI4.0; Type: QDOVA001BA; Serial: SN: 1052
- Measurement SW: DASY4, V4.7 Build 80; Postprocessing SW: SEMCAD, V1.8 Build 186

**Pin=250mW,d=10mm/Area Scan (6x6x1):** Measurement grid: dx=15mm, dy=15mm

Maximum value of SAR (measured) = 13.7 mW/g

**Pin=250mW,d=10mm /Zoom Scan (7x7x7)/Cube 0:** Measurement grid: dx=5mm, dy=5mm, dz=5mm

Reference Value = 97.9 V/m; Power Drift = -0.034 dB

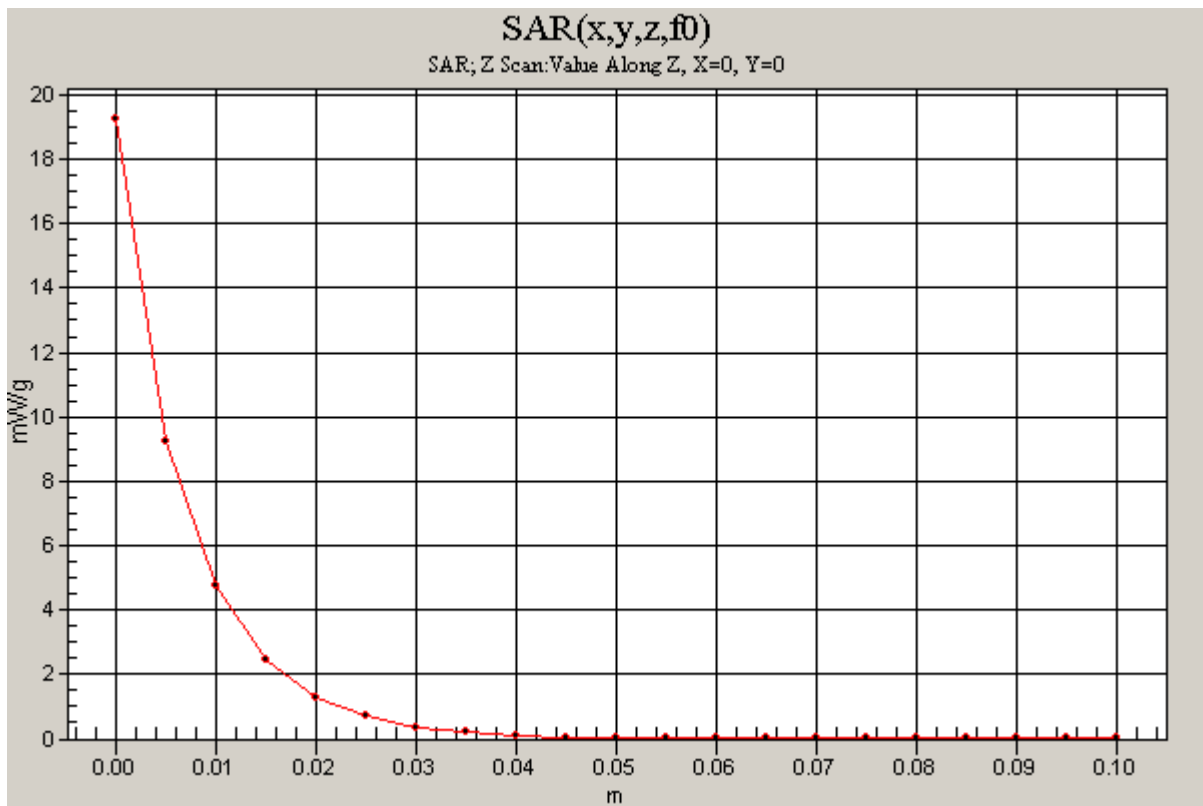
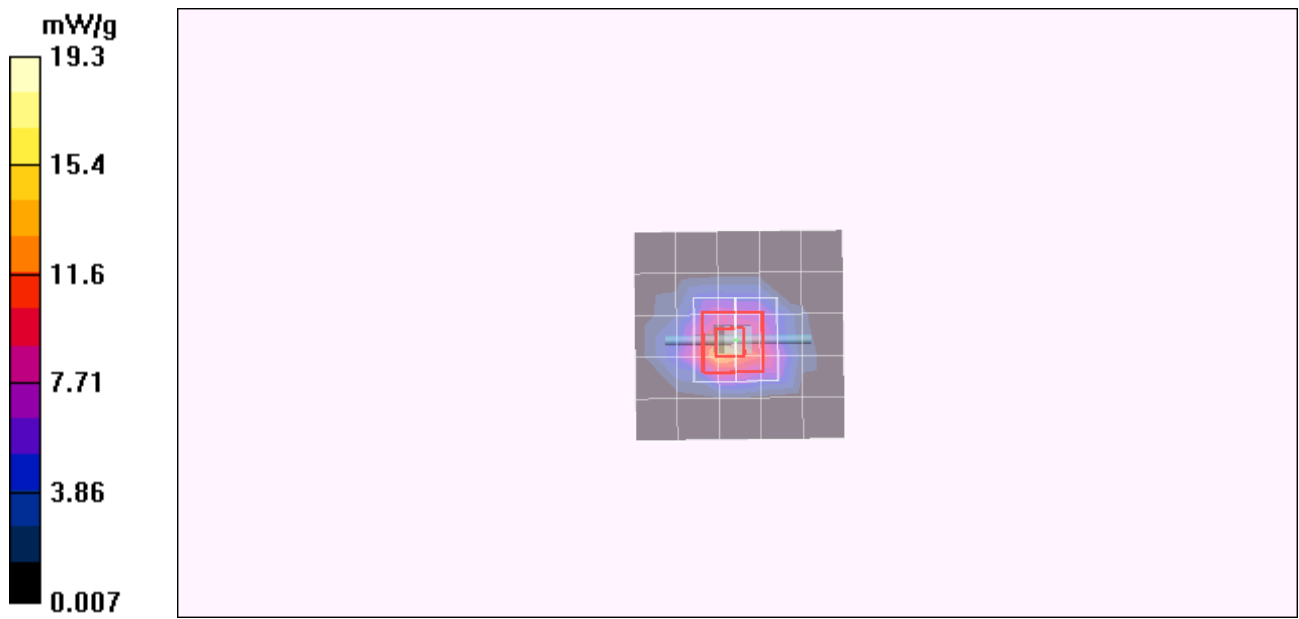
Peak SAR (extrapolated) = 27.3 W/kg

**SAR(1 g) = 13.1 mW/g; SAR(10 g) = 6.01 mW/g**

Maximum value of SAR (measured) = 18.6 mW/g

**Pin=250mW,d=10mm/Z Scan (1x1x21):** Measurement grid: dx=20mm, dy=20mm, dz=5mm

Maximum value of SAR (measured) = 19.3 mW/g



Test Laboratory: Compliance Certification Services Inc.

## 80211b Bottom Flat mode AR5BHB63

**DUT: AR5BHB63; Type: MiniPCIexpress 802.11b/g transceiver; Serial: N/A**

Communication System: IEEE 802.11b WLAN; Frequency: 2437 MHz; Duty Cycle: 1:1

Medium parameters used (interpolated):  $f = 2437$  MHz;  $\sigma = 1.96$  mho/m;  $\epsilon_r = 51.5$ ;  $\rho = 1000$  kg/m<sup>3</sup>

Phantom section: Flat Section

Air Temperature: 24.6 deg C; Liquid Temperature: 23.6 deg C

Area Scan Find Secondary Maximum Within 2dB and with a peak SAR value greater than 0.0012W/kg

DASY4 Configuration:

- Probe: EX3DV4 - SN3554; ConvF(5.93, 5.93, 5.93);
- Sensor-Surface: 2.5mm (Mechanical Surface Detection)
- Electronics: DAE4 Sn558; Calibrated: 9/19/2008
- Phantom: Flat Phantom ELI4.0; Type: QDOVA001BA; Serial: SN: 1052
- Measurement SW: DASY4, V4.7 Build 80; Postprocessing SW: SEMCAD, V1.8 Build 186

**Middle CH Rate 1M/Area Scan (17x21x1):** Measurement grid: dx=15mm, dy=15mm

Maximum value of SAR (measured) = 0.039 mW/g

**Middle CH Rate 1M/Zoom Scan (7x7x9)/Cube 0:** Measurement grid: dx=5mm, dy=5mm, dz=3mm

Reference Value = 1.42 V/m; Power Drift = -0.012 dB

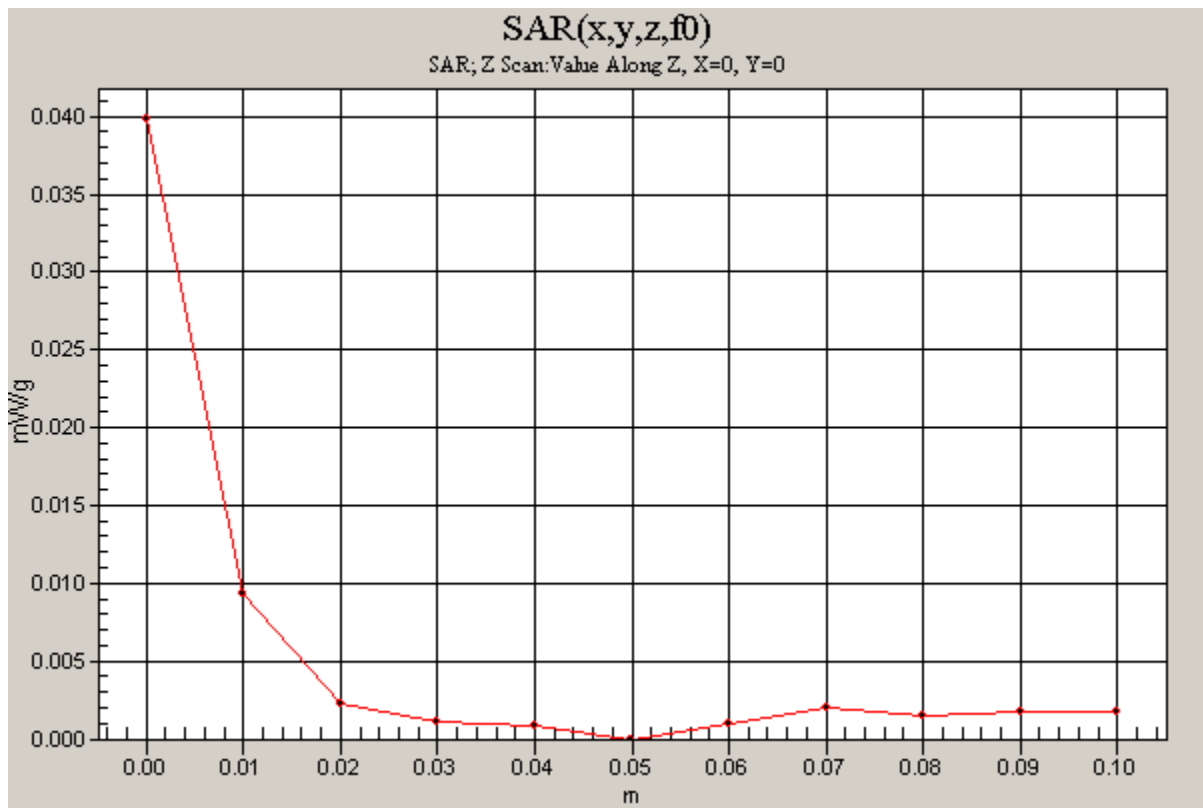
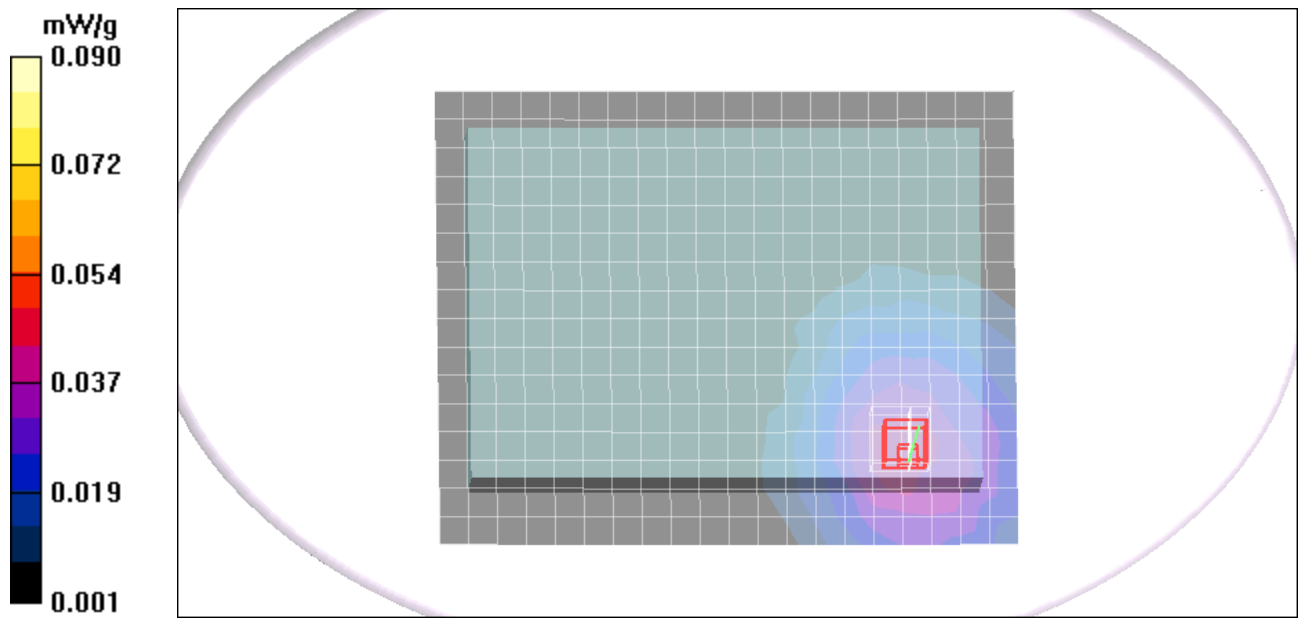
Peak SAR (extrapolated) = 0.062 W/kg

**SAR(1 g) = 0.028 mW/g; SAR(10 g) = 0.015 mW/g**

Maximum value of SAR (measured) = 0.043 mW/g

**Middle CH Rate 1M/Z Scan (1x1x11):** Measurement grid: dx=20mm, dy=20mm, dz=10mm

Maximum value of SAR (measured) = 0.040 mW/g



Test Laboratory: Compliance Certification Services Inc.

## 80211g Bottom Flat mode AR5BHB63

**DUT: ML; Type: Notebook Computer; Serial: N/A**

Communication System: IEEE 802.11g WLAN; Frequency: 2437 MHz; Duty Cycle: 1:1

Medium parameters used (interpolated):  $f = 2437$  MHz;  $\sigma = 1.96$  mho/m;  $\epsilon_r = 51.5$ ;  $\rho = 1000$  kg/m<sup>3</sup>

Phantom section: Flat Section

Air Temperature: 24.6 deg C; Liquid Temperature: 23.6 deg C

Area Scan Find Secondary Maximum Within 2dB and with a peak SAR value greater than 0.0012W/kg

DASY4 Configuration:

- Probe: EX3DV4 - SN3554; ConvF(5.93, 5.93, 5.93);
- Sensor-Surface: 2.5mm (Mechanical Surface Detection)
- Electronics: DAE4 Sn558; Calibrated: 9/19/2008
- Phantom: Flat Phantom ELI4.0; Type: QDOVA001BA; Serial: SN: 1052
- Measurement SW: DASY4, V4.7 Build 80; Postprocessing SW: SEMCAD, V1.8 Build 186

**Middle CH Rate 1M/Area Scan (17x21x1):** Measurement grid: dx=15mm, dy=15mm

Maximum value of SAR (measured) = 0.042 mW/g

**Middle CH Rate 1M/Zoom Scan (7x7x9)/Cube 0:** Measurement grid: dx=5mm, dy=5mm, dz=3mm

Reference Value = 1.32 V/m; Power Drift = -0.053 dB

Peak SAR (extrapolated) = 0.060 W/kg

**SAR(1 g) = 0.022 mW/g; SAR(10 g) = 0.013 mW/g**

Maximum value of SAR (measured) = 0.042 mW/g

