



SAR Evaluation Report

in accordance with the requirements of
FCC Report and Order: ET Docket 93-62, and OET Bulletin 65 Supplement C

for

802.11b/g Cardbus Card With Laptop Computers

Model: AR5BCB-00051

FCC ID: PPD-AR5BCB-00051

May 7, 2004

REPORT NO: 04U2587-7

Prepared for

**Atheros Communications, Inc.
529 Almanor Avenue
Sunnyvale, CA 94085, USA**

Prepared by

**COMPLIANCE CERTIFICATION SERVICES
561F MONTEREY ROAD
MORGAN HILL, CA 95037 USA
TEL: (408) 463-0885**



CERTIFICATE OF COMPLIANCE (SAR EVALUATION)**Dates of Tests:** February 2 & May 7, 2004

APPLICANT:	Atheros Communications, Inc.
ADDRESS:	529 Almanor Avenue Sunnyvale, CA 94085, USA
BRAND/MODEL NAME:	AR5BCB-00051
FCC ID:	PPD- AR5BCB-00051
DEVICE CATEGORY:	PORTABLE DEVICES
EXPOSURE CATEGORY:	GENERAL POPULATION/UNCONTROLLED EXPOSURE

Test Sample is a: Production unit**Modulation type:** - Direct Sequence Spread Spectrum (DSSS) for 802.11b
- Orthogonal Frequency Division Multiplexing (OFDM) for 802.11g**Tx Frequency:** 2412 to 2472 MHz**Max. O/P Power:** 19.5 dBm for 802.11b
(Conducted/Average) 19.5 dBm for 802.11g**Max. SAR (1g):** 0.554 mW/g for Host # 1: IBM, 2897
0.885 mW/g for Host # 2: Toshiba, TECRA 8200
0.710 mW/g for Host # 3: Dell, PP01L**FCC Rule Part(s):** 15C**Host devices:** Host # 1: IBM, 2897
Host # 2: Toshiba, TECRA 8200
Host # 3: Dell, PP01L

This wireless portable device has been shown to be capable of compliance for localized specific absorption rate (SAR) for uncontrolled environment/general population exposure limits specified in ANSI/IEEE Std. C95.1-1992 and had been tested in accordance with the measurement procedures specified in FCC OET 65 Supplement C (released on 6/29/2001 see Test Report).

I attest to the accuracy of data. All measurements reported herein were performed by me or were made under my supervision and are correct to the best of my knowledge and belief. I assume full responsibility for the completeness of these measurements and vouch for the qualifications of all persons taking them.



Hsin-Fu Shih (Sunny Shih)
Senior Engineer

TABLE OF CONTENTS

1.	EQUIPMENT UNDER TEST (EUT) DESCRIPTION.....	4
2.	REQUIREMENTS FOR COMPLIANCE TESTING DEFINED BY THE FCC.....	4
3.	DOSIMETRIC ASSESSMENT SYSTEM.....	4
3.1.	MEASUREMENT SYSTEM DIAGRAM	5
3.2.	SYSTEM COMPONENTS	6
4.	EVALUATION PROCEDURES	8
5.	MEASUREMENT UNCERTAINTY	12
6.	EXPOSURE LIMIT	13
7.	PROCEDURES USED TO ESTABLISH TEST SIGNALS	13
8.	MEASUREMENT RESULTS.....	14
8.1.	SIMULATING LIQUIDS PARAMETER CHECK.....	14
8.2.	SYSTEM PERFORMANCE CHECK.....	19
8.3.	SAR MEASUREMENTS RESULTS	21
9.	PHOTOS	27
10.	EQUIPMENT LIST & CALIBRATION STATUS.....	32
11.	REFERENCES	33
12.	ATTACHMENTS	34

1. EQUIPMENT UNDER TEST (EUT) DESCRIPTION

The following is the information provided by the applicant.

Type of EUT: 802.11bg Cardbus Card With Laptop Computers (Hosts)
Host # 1: IBM, Model 2897
Host # 2: Toshiba, TECRA 8200
Host # 3: Dell, PP01L

Type/Model No.: AR5BCB-00051

Modulation Type: Direct Sequence Spread Spectrum (DSSS) for 802.11b
Orthogonal Frequency Division Multiplexing (OFDM) for 802.11g

TX Frequency: 2412 to 2472 MHz

Power Supply: Power supplied through the laptop computer

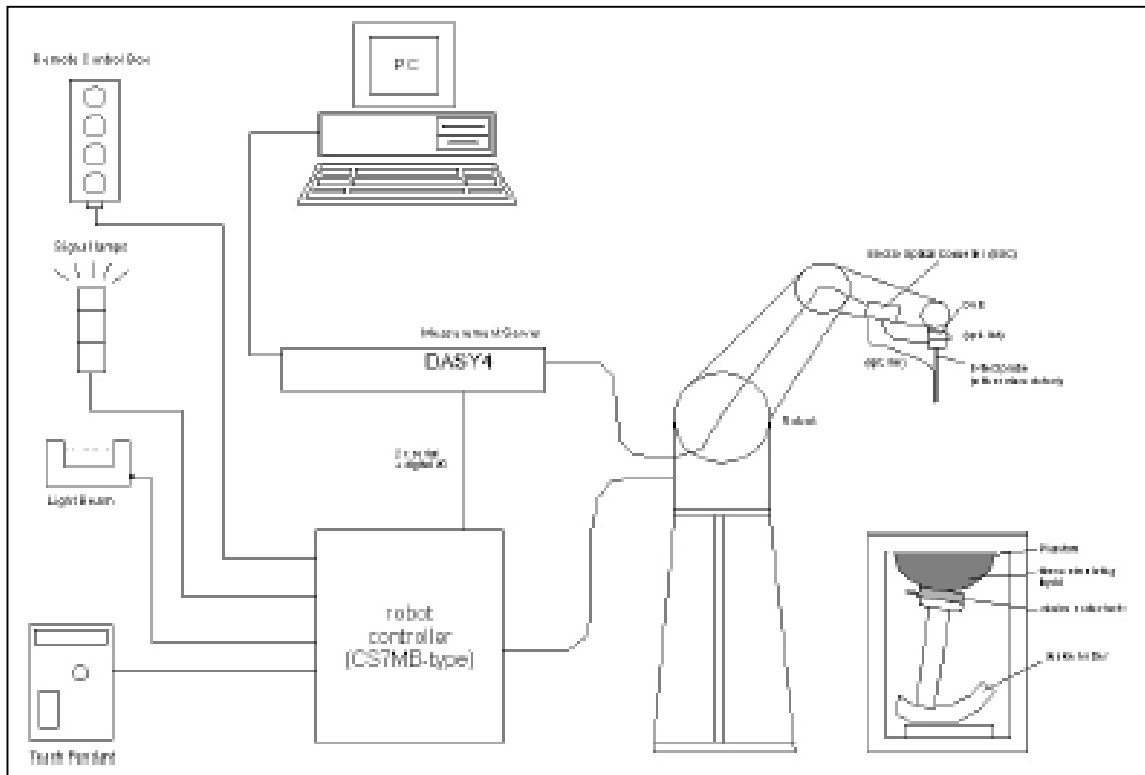
2. REQUIREMENTS FOR COMPLIANCE TESTING DEFINED BY THE FCC

The US Federal Communications Commission has released the report and order "Guidelines for Evaluating the Environmental Effects of RF Radiation", ET Docket No. 93-62 in August 1996 [1]. The order requires routine SAR evaluation prior to equipment authorization of portable transmitter devices, including portable telephones. For consumer products, the applicable limit is 1.6 mW/g for an uncontrolled environment and 8.0 mW/g for an occupational/controlled environment as recommended by the ANSI/IEEE standard C95.1-1992 [6]. According to the Supplement C of OET Bulletin 65 "Evaluating Compliance with FCC Guide-lines for Human Exposure to Radio frequency Electromagnetic Fields", released on Jun 29, 2001 by the FCC, the device should be evaluated at maximum output power (radiated from the antenna) under "worst-case" conditions for normal or intended use, incorporating normal antenna operating positions, device peak performance frequencies and positions for maximum RF energy coupling.

3. DOSIMETRIC ASSESSMENT SYSTEM

These measurements were performed with the automated near-field scanning system DASY4 from Schmid & Partner Engineering AG (SPEAG). The system is based on a high precision robot (working range greater than 0.9 m) which positions the probes with a positional repeatability of better than ± 0.02 mm. Special E- and H-field probes have been developed for measurements close to material discontinuity, the sensors of which are directly loaded with a Schottky diode and connected via highly resistive lines to the data acquisition unit. The SAR measurements were conducted with the dosimetric probe ES3DV2-SN: 3021 (manufactured by SPEAG), designed in the classical triangular configuration and optimized for dosimetric evaluation. The probe has been calibrated according to the procedure with accuracy of better than $\pm 10\%$. The spherical isotropy was evaluated with the procedure and found to be better than ± 0.25 dB. The phantom used was the SAM Twin Phantom as described in FCC supplement C, IEEE P1528 and EN50361.

3.1. MEASUREMENT SYSTEM DIAGRAM



The DASy4 system for performing compliance tests consists of the following items:

- A standard high precision 6-axis robot (Stäubli RX family) with controller, teach pendant and software. An arm extension for accommodating the data acquisition electronics (DAE).
- A dosimetric probe, i.e., an isotropic E-field probe optimized and calibrated for usage in tissue simulating liquid. The probe is equipped with an optical surface detector system.
- A data acquisition electronics (DAE) which performs the signal amplification, signal multiplexing, AD-conversion, offset measurements, mechanical surface detection, collision detection, etc. The unit is battery powered with standard or rechargeable batteries. The signal is optically transmitted to the EOC.
- The Electro-optical converter (EOC) performs the conversion between optical and electrical of the signals for the digital communication to the DAE and for the analog signal from the optical surface detection. The EOC is connected to the measurement server.
- The function of the measurement server is to perform the time critical tasks such as signal filtering, control of the robot operation and fast movement interrupts.
- A probe alignment unit which improves the (absolute) accuracy of the probe positioning.
- A computer operating Windows 2000 or Windows XP.
- DASy4 software.
- Remote control with teach pendant and additional circuitry for robot safety such as warning lamps, etc.
- The SAM twin phantom enabling testing left-hand and right-hand usage.
- The device holder for handheld mobile phones.
- Tissue simulating liquid mixed according to the given recipes.
- Validation dipole kits allowing validating the proper functioning of the system.

3.2. SYSTEM COMPONENTS

DASY4 MEASUREMENT SERVER



The DASY4 measurement server is based on a PC/104 CPU board with a 166MHz low-power Pentium, 32MB chip disk and 64MB RAM. The necessary circuits for communication with either the DAE3 electronic box as well as the 16-bit AD-converter system for optical detection and digital I/O interface are contained on the DASY4 I/O-board, which is directly connected to the PC/104 bus of the CPU board.

The measurement server performs all real-time data evaluation for field measurements and surface detection, controls robot movements and handles safety operation. The PC-operating system cannot interfere with these time critical processes. All connections are supervised by a watchdog, and disconnection of any of the cables to the measurement server will automatically disarm the robot and disable all program-controlled robot movements. Furthermore, the measurement server is equipped with two expansion slots which are reserved for future applications. Please note that the expansion slots do not have a standardized pinout and therefore only the expansion cards provided by SPEAG can be inserted. Expansion cards from any other supplier could seriously damage the measurement server. Calibration: No calibration required.

DATA ACQUISITION ELECTRONICS (DAE)

The data acquisition electronics (DAE3) consists of a highly sensitive electrometer grade preamplifier with auto-zeroing, a channel and gain-switching multiplexer, a fast 16 bit AD converter and a command decoder and control logic unit. Transmission to the measurement server is accomplished through an optical downlink for data and status information as well as an optical uplink for commands and the clock. The mechanical probe mounting device includes two different sensor systems for frontal and sideways probe contacts. They are used for mechanical surface detection and probe collision detection. The input impedance of the DAE3 box is 200M Ω ; the inputs are symmetrical and floating. Common mode rejection is above 80 dB.



ES3DV2 ISOTROPIC E-FIELD PROBE FOR DOSIMETRIC MEASUREMENTS

- Construction:** Symmetrical design with triangular core Interleaved sensors Built-in shielding against static charges PEEK enclosure material (resistant to organic solvents, e.g., glycoether)
- Calibration:** Basic Broad Band Calibration in air: 10-2500 MHz. Conversion Factors (CF) for HSL 900 and HSL 1800 CF-Calibration for other liquids and frequencies upon request.
- Frequency:** 10 MHz to > 6 GHz; Linearity: ± 0.2 dB
- Directivity:** ± 0.2 dB in HSL (rotation around probe axis);
 ± 0.3 dB in tissue material (rotation normal to probe axis)
- Dynamic Range:** 5 μ W/g to > 100 mW/g; Linearity: ± 0.2 dB
- Dimensions:** Overall length: 330 mm (Tip: 20 mm)
Tip diameter: 3.9 mm (Body: 12 mm)
Distance from probe tip to dipole centers: 2.7 mm
- Application:** General dosimetry up to 6 GHz
Dosimetry in strong gradient fields
Compliance tests of mobile phones



Interior of probe



Isotropic E-Field Probe

SAM PHANTOM (V4.0)

Construction: The shell corresponds to the specifications of the Specific Anthropomorphic Mannequin (SAM) phantom defined in IEEE 1528-200X, CENELEC 50361 and IEC 62209. It enables the dosimetric evaluation of left and right hand phone usage as well as body mounted usage at the flat phantom region. A cover prevents evaporation of the liquid. Reference markings on the phantom allow the complete setup of all predefined phantom positions and measurement grids by manually teaching three points with the robot.

Shell Thickness: 2 ± 0.2 mm

Filling Volume: Approx. 25 liters

Dimensions: Height: 810mm; Length: 1000mm;
Width: 500mm



DEVICE HOLDER FOR SAM TWIN PHANTOM

Construction: In combination with the Twin SAM Phantom V4.0 or Twin SAM, the Mounting Device (made from POM) enables the rotation of the mounted transmitter in spherical coordinates, whereby the rotation point is the ear opening. The devices can be easily and accurately positioned according to IEC, IEEE, CENELEC, FCC or other specifications. The device holder can be locked at different phantom locations (left head, right head, flat phantom).



SYSTEM VALIDATION KITS

Construction: Symmetrical dipole with 1/4 balun Enables measurement of feedpoint impedance with NWA Matched for use near flat phantoms filled with brain simulating solutions Includes distance holder and tripod adaptor.

Frequency: 450, 900, 1800, 2450, 5800 MHz

Return loss: > 20 dB at specified validation position

Power capability: > 100 W ($f < 1$ GHz); > 40 W ($f > 1$ GHz)

Dimensions:
 450V2: dipole length: 270 mm; overall height: 330 mm
 D900V2: dipole length: 149 mm; overall height: 330 mm
 D1800V2: dipole length: 72 mm; overall height: 300 mm
 D2450V2: dipole length: 51.5 mm; overall height: 300 mm
 D5GHzV2: dipole length: 25.5 mm; overall height: 290 mm



4. EVALUATION PROCEDURES

DATA EVALUATION

The DASY4 post processing software (SEMCAD) automatically executes the following procedures to calculate the field units from the microvolt readings at the probe connector. The parameters used in the evaluation are stored in the configuration modules of the software:

Probe parameters:	- Sensitivity	$Norm_i, a_{i0}, a_{i1}, a_{i2}$
	- Conversion factor	$ConvF_i$
	- Diode compression point	dcp_i
Device parameters:	- Frequency	f
	- Crest factor	cf
Media parameters:	- Conductivity	σ
	- Density	ρ

These parameters must be set correctly in the software. They can be found in the component documents or be imported into the software from the configuration files issued for the DASY components. In the direct measuring mode of the multi-meter option, the parameters of the actual system setup are used. In the scan visualization and export modes, the parameters stored in the corresponding document files are used.

The first step of the evaluation is a linearization of the filtered input signal to account for the compression characteristics of the detector diode. The compensation depends on the input signal, the diode type and the DC-transmission factor from the diode to the evaluation electronics. If the exciting field is pulsed, the crest factor of the signal must be known to correctly compensate for peak power. The formula for each channel can be given as:

$$V_i = U_i + U_i^2 \cdot \frac{cf}{dcp_i}$$

with	V_i	= Compensated signal of channel i	(i = x, y, z)
	U_i	= Input signal of channel i	(i = x, y, z)
	cf	= Crest factor of exciting field	(DASY parameter)
	dcp_i	= Diode compression point	(DASY parameter)

From the compensated input signals the primary field data for each channel can be evaluated:

E-field probes:

$$E_i = \sqrt{\frac{V_i}{Norm_i \cdot ConvF}}$$

H-field probes:

$$H_i = \sqrt{V_i} \cdot \frac{a_{i0} + a_{i1}f + a_{i2}f^2}{f}$$

with	V_i	= Compensated signal of channel i	(i = x, y, z)
	$Norm_i$	= Sensor sensitivity of channel i	(i = x, y, z)
		$\mu V/(V/m)^2$ for E0field Probes	
	$ConvF$	= Sensitivity enhancement in solution	
	a_{ij}	= Sensor sensitivity factors for H-field probes	
	f	= Carrier frequency (GHz)	
	E_i	= Electric field strength of channel i in V/m	
	H_i	= Magnetic field strength of channel i in A/m	

The RSS value of the field components gives the total field strength (Hermitian magnitude):

$$E_{tot} = \sqrt{E_x^2 + E_y^2 + E_z^2}$$

The primary field data are used to calculate the derived field units.

$$SAR = E_{tot}^2 \cdot \frac{\sigma}{\rho \cdot 1000}$$

with SAR = local specific absorption rate in mW/g

E_{tot} = total field strength in V/m

σ = conductivity in [mho/m] or [Siemens/m]

ρ = equivalent tissue density in g/cm³

Note that the density is normally set to 1 (or 1.06), to account for actual brain density rather than the density of the simulation liquid.

The power flow density is calculated assuming the excitation field as a free space field.

$$P_{pwe} = \frac{E_{tot}^2}{3770} \quad \text{or} \quad P_{pwe} = H_{tot}^2 \cdot 37.7$$

with P_{pwe} = Equivalent power density of a plane wave in mW/cm²

E_{tot} = total electric field strength in V/m

H_{tot} = total magnetic field strength in A/m

SAR SYSTEM MEASUREMENT PROCEDURES

The procedure for assessing the peak spatial-average SAR value consists of the following steps:

- **Power Reference Measurement**

The reference and drift jobs are useful jobs for monitoring the power drift of the device under test in the batch process. Both jobs measure the field at a specified reference position, at a selectable distance from the phantom surface. The reference position can be either the selected section's grid reference point or a user point in this section. The reference job projects the selected point onto the phantom surface, orients the probe perpendicularly to the surface, and approaches the surface using the selected detection method.

- **Area Scan**

The area scan is used as a fast scan in two dimensions to find the area of high field values, before doing a finer measurement around the hot spot. The sophisticated interpolation routines implemented in DAS4 software can find the maximum locations even in relatively coarse grids. This grid is anchored at the grid reference point of the selected section in the phantom. When the area scan's property sheet is brought-up, grid settings can be edited by a user. When an area scan has measured all reachable points, it computes the field maximum found in the scanned area, within a range of the global maximum. If only one Zoom Scan follows the Area Scan, then only the absolute maximum will be taken as reference. For cases where multiple maximums are detected, the number of Zoom Scans has to be increased accordingly.

- **Zoom Scan**

Zoom scans are used to assess the peak spatial SAR values within a cubic averaging volume containing 1 g and 10 g of simulated tissue. The default zoom scan measures 5 x 5 x 7 points within a cube whose base faces are centered around the maximum found in a preceding area scan job within the same procedure. If the preceding Area Scan job indicates more than one maximum, the number of Zoom Scans has to be enlarged accordingly. For dosimetric application, it is necessary to assess the peak spatial SAR value averaged over a volume. For this purpose, fine resolution volume scans need to be performed at the peak SAR location(s) determined during the Area Scan.

- **Power Drift measurement**

The drift job measures the field at the same location as the most recent reference job within the same procedure, and with the same settings. The drift measurement gives the field difference in dB from the reading conducted within the last reference measurement. Several drift measurements are possible for one reference measurement. This allows a user to monitor the power drift of the device under test within a batch process. In the properties of the Drift job, the user can specify a limit for the drift and have DAS4 software stop the measurements if this limit is exceeded.

- **Z-Scan**

The Z Scan job measures points along a vertical straight line. The line runs along the Z-axis of a one-dimensional grid. A user can anchor the grid to the current probe location. As with any other grids, the local Z-axis of the anchor location establishes the Z-axis of the grid.

SPATIAL PEAK SAR EVALUATION

The procedure for spatial peak SAR evaluation has been implemented according to the IEEE1529 standard. It can be conducted for 1 g and 10 g.

The DASY4 system allows evaluations that combine measured data and robot positions, such as:

- maximum search
- extrapolation
- boundary correction
- peak search for averaged SAR

During a maximum search, global and local maximum searches are automatically performed in 2-D after each Area Scan measurement with at least 6 measurement points. It is based on the evaluation of the local SAR gradient calculated by the Quadratic Shepard's method. The algorithm will find the global maximum and all local maxima within -2 dB of the global maxima for all SAR distributions.

Extrapolation

Extrapolation routines are used to obtain SAR values between the lowest measurement points and the inner phantom surface. The extrapolation distance is determined by the surface detection distance and the probe sensor offset. Several measurements at different distances are necessary for the extrapolation.

Extrapolation routines require at least 10 measurement points in 3-D space. They are used in the Cube Scan to obtain SAR values between the lowest measurement points and the inner phantom surface. The routine uses the modified Quadratic Shepard's method for extrapolation. For a grid using 5x5x7 measurement points with 5mm resolution amounting to 343 measurement points, the uncertainty of the extrapolation routines is less than 1% for 1 g and 10 g cubes.

Boundary effect

For measurements in the immediate vicinity of a phantom surface, the field coupling effects between the probe and the boundary influence the probe characteristics. Boundary effect errors of different dosimetric probe types have been analyzed by measurements and using a numerical probe model. As expected, both methods showed an enhanced sensitivity in the immediate vicinity of the boundary. The effect strongly depends on the probe dimensions and disappears with increasing distance from the boundary. The sensitivity can be approximately given as:

$$S \approx S_o + S_b \exp\left(-\frac{z}{a}\right) \cos\left(\pi \frac{z}{\lambda}\right)$$

Since the decay of the boundary effect dominates for small probes ($a \ll \lambda$), the cos-term can be omitted. Factors S_b (parameter Alpha in the DASY4 software) and a (parameter Delta in the DASY4 software) are assessed during probe calibration and used for numerical compensation of the boundary effect. Several simulations and measurements have confirmed that the compensation is valid for different field and boundary configurations.

This simple compensation procedure can largely reduce the probe uncertainty near boundaries. It works well as long as:

- the boundary curvature is small
- the probe axis is angled less than 30° to the boundary normal
- the distance between probe and boundary is larger than 25% of the probe diameter
- the probe is symmetric (all sensors have the same offset from the probe tip)

Since all of these requirements are fulfilled in a DASY4 system, the correction of the probe boundary effect in the vicinity of the phantom surface is performed in a fully automated manner via the measurement data extraction during postprocessing.

5. MEASUREMENT UNCERTAINTY

UNCERTAINTY BUDGE ACCORDING TO IEEE P1528								
Error Description	Uncertainty Value [%]	Prob. Dist.	Div.	(c_i) 1g	(c_i) 10g	Std. Unc.(1g)	Std. Unc. (10g)	(v_i) v_{eff}
Measurement System								
Probe Calibration	±4.8	N	1	1	1	±4.8%	±4.8%	∞
Axial Isotropy	±4.7	R	$\sqrt{3}$	0.7	0.7	±1.9%	±1.9%	∞
Hemispherical Isotropy	±9.6	R	$\sqrt{3}$	0.7	0.7	±3.9%	±3.9%	∞
Boundary Effects	±1.0	R	$\sqrt{3}$	1	1	±0.6%	±0.6%	∞
Linearity	±4.7	R	$\sqrt{3}$	1	1	±2.7%	±2.7%	∞
System Detection Limits	±1.0	R	$\sqrt{3}$	1	1	±0.6%	±0.6%	∞
Readout Electronics	±1.0	N	$\sqrt{3}$	1	1	±1.0%	±1.0%	∞
Response Time	±0.8	R	$\sqrt{3}$	1	1	±0.5%	±0.5%	∞
Integration Time	±2.6	R	$\sqrt{3}$	1	1	±1.5%	±1.5%	∞
RF Ambient Condition	±1.59	R	$\sqrt{3}$	1	1	±0.9%	±0.9%	∞
Probe Positioner	±1.6	R	$\sqrt{3}$	1	1	±0.2%	±0.2%	∞
Probe Positioning	±2.9	R	$\sqrt{3}$	1	1	±1.7%	±1.7%	∞
Max. SAR Eval.	±1.0	R	$\sqrt{3}$	1	1	±0.6%	±0.6%	∞
Test sample Related								
Device Positioning	±1.1	N	1	1	1	±1.1%	±1.1%	145
Device Holder	±3.6	N	1	1	1	±3.6%	±3.6%	5
Power Drift	±5.0	R	$\sqrt{3}$	1	1	±2.9%	±2.9%	∞
Phantom and Setup								
Phantom Uncertainty	±4.0	R	$\sqrt{3}$	1	1	±2.3%	±2.3%	∞
Liquid Conductivity (target)	±5.0	R	$\sqrt{3}$	0.64	0.43	±1.8%	±1.2%	∞
Liquid Conductivity (meas.)	±2.5	N	1	0.64	0.43	±1.6%	±1.1%	∞
Liquid Permittivity (target)	±5.0	R	$\sqrt{3}$	0.6	0.49	±1.7%	±1.4%	∞
Liquid Permittivity (meas.)	±2.5	N	1	0.6	0.49	±1.5%	±1.2%	∞
Combined Std. Uncertainty						±9.8%	±9.6%	330
Expanded STD Uncertainty						±19.6%	±19.2%	

Table: Worst-case uncertainty for DASY4 assessed according to IEEE P1528.

The budge is valid for the frequency range 300MHz – 3GHz and represents a worst-case analysis.

6. EXPOSURE LIMIT**(A) Limits for Occupational/Controlled Exposure (W/kg)**

Whole-Body	Partial-Body	Hands, Wrists, Feet and Ankles
0.4	8.0	20.0

(B) Limits for General Population/Uncontrolled Exposure (W/kg)

Whole-Body	Partial-Body	Hands, Wrists, Feet and Ankles
0.08	1.6	4.0

NOTE 1: See Section 1 for discussion of exposure categories.

NOTE 2: Whole-Body SAR is averaged over the entire body, partial-body SAR is averaged over any 1 gram of tissue defined as a tissue volume in the shape of a cube. SAR for hands, wrists, feet and ankles is averaged over any 10 grams of tissue defined as a tissue volume in the shape of a cube.

NOTE 3: At frequencies above 6.0 GHz, SAR limits are not applicable and MPE limits for power density should be applied at 5 cm or more from the transmitting device.

NOTE 4: The time averaging criteria for field strength and power density do not apply to general population SAR limit of 47 CFR §2.1093

<p>NOTE GENERAL POPULATION/UNCONTROLLED EXPOSURE PARTIAL BODY LIMIT 1.6 mW/g</p>

7. PROCEDURES USED TO ESTABLISH TEST SIGNALS

The following procedures had been used to prepare the EUT for the SAR test.

- The client supplied a special driving program (ART-V5_1_b3) to program the EUT to continually transmit the specified maximum power. And also to change the channel frequency.
- The conducted power was measured at the high, middle and low channel frequency before and after the SAR measurement.

8. MEASUREMENT RESULTS

8.1. SIMULATING LIQUIDS PARAMETER CHECK

The simulating liquids should be checked at the beginning of a series of SAR measurements to determine if the dielectric parameters are within the tolerances of the specified target values. The relative permittivity and conductivity of the tissue material should be within $\pm 5\%$ of the values given in the table below. 5% may not be easily achieved at certain frequencies. Under such circumstances, 10% tolerance may be used until more precise tissue recipes are available.

TISSUE DIELECTRIC PARAMETERS FOR HEAD AND BODY PHANTOMS

The head tissue dielectric parameters recommended by the IEEE SCC-34/SC-2 in P1528 have been incorporated in the following table. These head parameters are derived from planar layer models simulating the highest expected SAR for the dielectric properties and tissue thickness variations in a human head. Other head and body tissue parameters that have not been specified in P1528 are derived from the tissue dielectric parameters computed from the 4-Cole-Cole equations and extrapolated according to the head parameters specified in P1528.

Target Frequency (MHz)	Head		Body	
	ϵ_r	σ (S/m)	ϵ_r	σ (S/m)
150	52.3	0.76	61.9	0.80
300	45.3	0.87	58.2	0.92
450	43.5	0.87	56.7	0.94
835	41.5	0.90	55.2	0.97
900	41.5	0.97	55.0	1.05
915	41.5	0.98	55.0	1.06
1450	40.5	1.20	54.0	1.30
1610	40.3	1.29	53.8	1.40
1800 – 2000	40.0	1.40	53.3	1.52
2450	39.2	1.80	52.7	1.95
3000	38.5	2.40	52.0	2.73
5800	35.3	5.27	48.2	6.00

(ϵ_r = relative permittivity, σ = conductivity and $\rho = 1000 \text{ kg/m}^3$)

TYPICAL COMPOSITION OF INGREDIENTS FOR LIQUID TISSUE PHANTOMS

The following tissue formulations are provided for reference only as some of the parameters have not been thoroughly verified. The composition of ingredients may be modified accordingly to achieve the desired target tissue parameters required for routine SAR evaluation.

Ingredients (% by weight)	Frequency (MHz)									
	450		835		915		1900		2450	
Tissue Type	Head	Body	Head	Body	Head	Body	Head	Body	Head	Body
Water	38.56	51.16	41.45	52.4	41.05	56.0	54.9	40.4	62.7	73.2
Salt (NaCl)	3.95	1.49	1.45	1.4	1.35	0.76	0.18	0.5	0.5	0.04
Sugar	56.32	46.78	56.0	45.0	56.5	41.76	0.0	58.0	0.0	0.0
HEC	0.98	0.52	1.0	1.0	1.0	1.21	0.0	1.0	0.0	0.0
Bactericide	0.19	0.05	0.1	0.1	0.1	0.27	0.0	0.1	0.0	0.0
Triton X-100	0.0	0.0	0.0	0.0	0.0	0.0	0.0	0.0	36.8	0.0
DGBE	0.0	0.0	0.0	0.0	0.0	0.0	44.92	0.0	0.0	26.7
Dielectric Constant	43.42	58.0	42.54	56.1	42.0	56.8	39.9	54.0	39.8	52.5
Conductivity (S/m)	0.85	0.83	0.91	0.95	1.0	1.07	1.42	1.45	1.88	1.78

Salt: 99% Pure Sodium Chloride

Sugar: 98% Pure Sucrose

Water: De-ionized, $16 \text{ M}\Omega$ resistivity

HEC: Hydroxyethyl Cellulose

DGBE: 99% Di(ethylene glycol) butyl ether, [2-(2-butoxyethoxy)ethanol]

Triton X-100 (ultra pure): Polyethylene glycol mono [4-(1,1,3,3-tetramethylbutyl)phenyl]ether

SIMULATING LIQUIDS PARAMETER CHECK RESULTS

Date: April 2, 2004

Ambient condition: Ambient Temperature = 24°C; Relative humidity = 32%

Head Simulating Liquid			Parameters	Target	Measured	Deviation[%]	Limited[%]
f (MHz)	Temp. [°C]	Depth (cm)					
2450	23	15	Permittivity:	39.2	39.4973	0.76	± 5
			Conductivity:	1.8	1.8829	4.61	± 5

Measurement results form Network Analyzer

Simulating Liquid Parameter Check Results @ 2450 MHz

Ambient temperature = 23.5 deg. C; Liquid temperature = 22.0 deg.C

April 02, 2004 01:49 PM

Frequency	e'	e''
2.400000000 GHz	39.7139	13.6680
2.410000000 GHz	39.6610	13.6930
2.420000000 GHz	39.6225	13.7173
2.430000000 GHz	39.5871	13.7507
2.440000000 GHz	39.5452	13.7786
2.450000000 GHz	39.4973	13.8148
2.460000000 GHz	39.4566	13.8451
2.470000000 GHz	39.4245	13.8712
2.480000000 GHz	39.3914	13.9210
2.490000000 GHz	39.3434	13.9558
2.500000000 GHz	39.3040	13.9863

SIMULATING LIQUIDS PARAMETER CHECK RESULTS (CONTINUED)

Date: April 2, 2004

Ambient condition: Ambient Temperature = 24°C; Relative humidity = 32%

Muscle Simulating Liquid			Parameters	Target	Measured	Deviation[%]	Limited[%]
f (MHz)	Temp. [°C]	Depth (cm)					
2450	23	15	Permittivity:	52.7	52.0901	-1.16	± 5
			Conductivity:	1.95	1.9903	2.07	± 5

Measurement results form Network Analyzer

Simulating Liquid Parameter Check Results @ 2450 MHz

Ambient temperature = 23.5 deg. C; Liquid temperature = 22.0 deg.C

April 02, 2004 02:11 PM

Frequency	e'	e''
2.400000000 GHz	52.2974	14.3965
2.410000000 GHz	52.2560	14.4127
2.420000000 GHz	52.2177	14.4331
2.430000000 GHz	52.1758	14.4854
2.440000000 GHz	52.1302	14.5394
2.450000000 GHz	52.0901	14.6024
2.460000000 GHz	52.0652	14.6580
2.470000000 GHz	52.0439	14.7328
2.480000000 GHz	52.0225	14.7854
2.490000000 GHz	51.9665	14.8190
2.500000000 GHz	51.9382	14.8286

SIMULATING LIQUIDS PARAMETER CHECK RESULTS (CONTINUED)

Date: May 7, 2004

Ambient condition: Ambient Temperature = 24°C; Relative humidity = 40%

Simulating Liquid				Parameters		Target	Measured	Deviation (%)	Limit (%)
Medium	f (MHz)	Temp. (°C)	Depth (cm)	e''	Relative Permittivity (ε _r)				
Head	2450	23	15	13.798	Conductivity (σ):	1.80	1.881	4.48	± 5
						39.2	39.0615	-0.35	± 5

Note: Interpolated medium parameters used for SAR evaluation.

The conductivity (σ) can be given as:

$$\sigma = \omega \epsilon_0 \epsilon'' = 2 \pi f \epsilon_0 \epsilon''$$

where $f = \text{target } f * 10^6$

$$\epsilon_0 = 8.854 * 10^{-12}$$

Simulating Liquid Parameter Check Results @ 2450 MHz

Ambient temperature = 24.0 deg. C; Liquid temperature = 23.0 deg.C

May 07, 2004 10:30 AM

Frequency	e'	e''
2.400000000 GHz	39.2634	13.6251
2.410000000 GHz	39.2093	13.6752
2.420000000 GHz	39.1658	13.7166
2.430000000 GHz	39.1334	13.7433
2.440000000 GHz	39.0993	13.7634
2.450000000 GHz	39.0615	13.7981
2.460000000 GHz	39.0149	13.8014
2.470000000 GHz	38.9694	13.8182
2.480000000 GHz	38.9462	13.8274
2.490000000 GHz	38.9192	13.8736
2.500000000 GHz	38.8799	13.9334

SIMULATING LIQUIDS PARAMETER CHECK RESULTS (CONTINUED)

Date: May 7, 2004

Ambient condition: Ambient Temperature = 24°C; Relative humidity = 40%

Simulating Liquid				Parameters		Target	Measured	Deviation (%)	Limit (%)
Medium	f (MHz)	Temp. (°C)	Depth (cm)	e''	Relative Permittivity (ε _r)				
Muscle	2450	23	15	14.549	Conductivity (σ):	1.95	1.983	1.69	± 5
						52.7	52.2152	-0.92	± 5

Note: Interpolated medium parameters used for SAR evaluation.

The conductivity (σ) can be given as:

$$\sigma = \omega \epsilon_0 \epsilon'' = 2 \pi f \epsilon_0 \epsilon''$$

where $f = \text{target } f * 10^6$

$$\epsilon_0 = 8.854 * 10^{-12}$$

Simulating Liquid Parameter Check Results @ 2450 MHz

Ambient temperature = 24.0 deg. C; Liquid temperature = 23.0 deg.C

May 07, 2004 11:35 AM

Frequency	e'	e''
2.400000000 GHz	52.3869	14.3262
2.410000000 GHz	52.3465	14.3974
2.420000000 GHz	52.3154	14.4386
2.430000000 GHz	52.2787	14.4800
2.440000000 GHz	52.2739	14.5004
2.450000000 GHz	52.2152	14.5488
2.460000000 GHz	52.1894	14.5594
2.470000000 GHz	52.1377	14.5813
2.480000000 GHz	52.1219	14.6032
2.490000000 GHz	52.0916	14.6715
2.500000000 GHz	52.0558	14.7400

8.2. SYSTEM PERFORMANCE CHECK

The system performance check is performed prior to any usage of the system in order to guarantee reproducible results. The system performance check verifies that the system operates within its specifications. The system performance check results are tabulated below. And also the corresponding SAR plot is attached as well in the SAR plots files.

SYSTEM PERFORMANCE CHECK MEASUREMENT CONDITIONS

- The measurements were performed in the flat section of the SAM twin phantom filled with Head simulating liquid of the following parameters.
- The DASY4 system with an E-field probe ET3DV6 SN: 1577 was used for the measurements.
- The dipole was mounted on the small tripod so that the dipole feed point was positioned below the center marking of the flat phantom section and the dipole was oriented parallel to the body axis (the long side of the phantom). The standard measuring distance was 10 mm (above 1 GHz) and 15 mm (below 1 GHz) from dipole center to the simulating liquid surface.
- The coarse grid with a grid spacing of 15 mm was aligned with the dipole.
- Special 5 x 5 x 7 fine cube was chosen for cube integration(dx=dy=7.5mm; dz=5mm).
- Distance between probe sensors and phantom surface was set to 4mm.
- The dipole input power (forward power) was 250 mW \pm 3%.
- The results are normalized to 1 W input power.

REFERENCE SAR VALUES

The system performance check is performed prior to any usage of the system in order to guarantee reproducible results. The system performance check verifies that the system operates within its specifications of $\pm 10\%$. The system performance check results are tabulated below. And also the corresponding SAR plot is attached as well in the SAR plots files.

IEEE P1528 Recommended Reference Value

Frequency (MHz)	1 g SAR	10 g SAR	Local SAR at surface (Above feed point)	Local SAR at surface (y=2cm offset from feed point)
300	3.0	2.0	4.4	2.1
450	4.9	3.3	7.2	3.2
835	9.5	6.2	14.1	4.9
900	10.8	6.9	16.4	5.4
1450	29.0	16.0	50.2	6.5
1800	38.1	19.8	69.5	6.8
1900	39.7	20.5	72.1	6.6
2450	52.4	24.0	104.2	7.7
3000	63.8	25.7	140.2	9.5

SYSTEM PERFORMANCE CHECK RESULTS @ SYSTEM VALIDATION DIPOLE: D2450V2 SN: 706

Date: April 2, 2004

Ambient condition: Temperature = 24.0°C; Relative humidity = 32%

Head Simulating Liquid			Parameters	Target	Measured	Deviation[%]	Limited[%]
f (MHz)	Temp. [°C]	Depth [cm]					
2450	23.0	15.0	Permittivity:	39.2	39.4973	0.76	± 5
			Conductivity:	1.8	1.8829	4.61	± 5
			1g SAR:	52.4	55.60	6.11	± 10

SYSTEM PERFORMANCE CHECK RESULTS @ SYSTEM VALIDATION DIPOLE: D2450V2 SN: 706**Date:** May 7, 2004**Ambient condition:** Temperature = 24.0°C; Relative humidity = 40%

Head Simulating Liquid			Parameters	Target	Measured	Deviation[%]	Limited[%]
f (MHz)	Temp. [°C]	Depth [cm]					
2450	23.0	15.0	Permittivity:	39.2	39.0615	-0.35	± 5
			Conductivity:	1.8	1.881	4.50	± 5
			1g SAR:	52.4	52.80	0.76	± 10

8.3.SAR MEASUREMENTS RESULTS

Host # 1 – IBM, 2897 (802.11b)



802.11b (Duty Cycle: 100% , Crest Factor: 1)		Depth of liquid: 15.0 cm						
Sep. dist. (mm)	Antenna	Frequency		*Conducted Pwr_dBm		Liquid Temp_°C	SAR (1g) (W/kg)	Limit (W/kg)
		Ch. #	MHz	Before	After			
14	A	1	2412	19.50			**	1.6
		6	2437	19.42	19.40	23.0	0.443	
		11	2462	18.65			**	
		12	2467	16.63			**	
		13	2472	10.80			**	
14	B	1	2412	19.50	19.50	23.0	0.513	1.6
		6	2437	19.42	19.40	23.0	0.458	
		11	2462	18.65	18.60	23.0	0.335	
		12	2467	16.63	16.60	23.0	0.201	
		13	2472	10.80	10.80	23.0	0.054	

Notes:

1. *: Conducted power - Average power.
2. **: The SAR measured at the middle channel for this configuration is at least 3 dB lower than SAR limit, testing at the low and high channel is option.
3. SAR tested for a lap-held position with the bottom of the computer in direct contact against a flat phantom.
4. Spacing between EUT and phantom: 14 mm
5. Please see attachment for the detailed measurement data and plots showing the maximum SAR location of the EUT.

Host # 1 – IBM, 2897 (802.11g)



802.11g (Duty Cycle: 100% , Crest Factor: 1)		Depth of liquid: 15.0 cm						
Sep. dist. (mm)	Antenna	Frequency		*Conducted Pwr_dBm		Liquid Temp_°C	SAR (1g) (W /kg)	Limit (W /kg)
		Ch. #	MHz	Before	After			
14	A	1	2412	16.70			**	1.6
		6	2437	19.50	19.50	23.0	0.544	
		6 (Turbo)	2437	19.00	19.00	23.0	0.431	
		11	2462	16.41			**	
		12	2467	14.30			**	
		13	2472	10.33			**	
14	B	1	2412	16.70	16.70	23.0	0.286	1.6
		6	2437	19.50	19.50	23.0	0.554	
		6 (Turbo)	2437	19.00	19.00	23.0	0.495	
		11	2462	16.41			**	
		12	2467	14.30			**	
		13	2472	10.33			**	

Notes:

1. *: Conducted power - Average power.
2. **: The SAR measured at the middle channel for this configuration is at least 3 dB lower than SAR limit, testing at the low & high channel is option.
3. SAR tested for a lap-held position with the bottom of the computer in direct contact against a flat phantom.
4. Spacing between EUT and phantom: 14 mm
5. Please see attachment for the detailed measurement data and plots showing the maximum SAR location of the EUT.

Host # 2 – Toshiba, TECRA 8200 (802.11b)



802.11b (Duty Cycle: 100% , Crest Factor: 1)		Depth of liquid: 15.0 cm						
Sep. dist. (mm)	Antenna	Frequency		*Conducted Pwr_dBm		Liquid Temp_°C	SAR (1g) (W/kg)	Limit (W/kg)
		Ch. #	MHz	Before	After			
11	A	1	2412	19.50	19.50	23.0	0.885	1.6
		6	2437	19.42	19.40	23.0	0.698	
		11	2462	18.65	18.63	23.0	0.528	
		12	2467	16.63			**	
		13	2472	10.80			**	
11	B	1	2412	19.50	19.50	23.0	0.726	1.6
		6	2437	19.42	19.40	23.0	0.674	
		11	2462	18.65			**	
		12	2467	16.63			**	
		13	2472	10.80			**	

Notes:

1. *: Conducted power - Average power.
2. **: The SAR measured at the middle channel for this configuration is at least 3 dB lower than SAR limit, testing at the low and high channel is option.
3. SAR tested for a lap-held position with the bottom of the computer in direct contact against a flat phantom.
4. Spacing between EUT and phantom: 11 mm
5. Please see attachment for the detailed measurement data and plots showing the maximum SAR location of the EUT.

Host # 2 – Toshiba, TECRA 8200 (802.11g)



802.11g (Duty Cycle: 100% , Crest Factor: 1)		Depth of liquid: 15.0 cm		*Conducted Pwr_dBm		Liquid Temp_°C	SAR (1g) (W /kg)	Lim it (W /kg)
Sep. dist. (mm)	Antenna	Ch. #	Frequency MHz	Before	After			
11	A	1	2412	16.70			**	1.6
		6	2437	19.50	19.50	23.0	0.750	
		6 (Turbo)	2437	19.00	19.00	23.0	0.654	
		11	2462	16.41			**	
		12	2467	14.30			**	
		13	2472	10.33			**	
11	B	1	2412	16.70			**	1.6
		6	2437	19.50	19.50	23.0	0.636	
		6 (Turbo)	2437	19.00	19.00	23.0	0.559	
		11	2462	16.41			**	
		12	2467	14.30			**	
		13	2472	10.33			**	

- Notes:
1. *: Conducted power - Average power.
 2. **: The SAR measured at the middle channel for this configuration is at least 3 dB lower than SAR limit, testing at the low & high channel is option.
 3. SAR tested for a lap-held position with the bottom of the computer in direct contact against a flat phantom.
 4. Spacing between EUT and phantom: 11 mm
 5. Please see attachment for the detailed measurement data and plots showing the maximum SAR location of the EUT.

Host # 3 – Dell, PP01L (802.11b)



802.11b (Duty Cycle: 100% , Crest Factor: 1)		Depth of liquid: 15.0 cm						
Sep. dist. (mm)	Antenna	Frequency		*Conducted Pwr_dBm		Liquid Temp_°C	SAR (1g) (W/kg)	Limit (W/kg)
		Ch. #	MHz	Before	After			
12	A	1	2412	19.50	19.50	23.0	0.710	1.6
		6	2437	19.42	19.40	23.0	0.636	
		11	2462	18.65			**	
		12	2467	16.63			**	
		13	2472	10.80			**	
12	B	1	2412	19.50			**	1.6
		6	2437	19.42	19.40	23.0	0.607	
		11	2462	18.65			**	
		12	2467	16.63			**	
		13	2472	10.80			**	

Notes:

1. *: Conducted power - Average power.
2. **: The SAR measured at the middle channel for this configuration is at least 3 dB lower than SAR limit, testing at the low and high channel is option.
3. SAR tested for a lap-held position with the bottom of the computer in direct contact against a flat phantom.
4. Spacing between EUT and phantom: 12 mm
5. Please see attachment for the detailed measurement data and plots showing the maximum SAR location of the EUT.

Host # 3 – Dell, PP01L (802.11g)



802.11g (Duty Cycle: 100% , Crest Factor: 1)		Depth of liquid: 15.0 cm						
Sep. dist. (mm)	Antenna	Frequency		*Conducted Pwr_dBm		Liquid Temp_°C	SAR (1g) (W/kg)	Limit (W/kg)
		Ch. #	MHz	Before	After			
12	A	1	2412	16.70			**	1.6
		6	2437	19.50	19.50	23.0	0.674	
		6 (Turbo)	2437	19.00	19.00	23.0	0.544	
		11	2462	16.41			**	
		12	2467	14.30			**	
		13	2472	10.33			**	
12	B	1	2412	16.70			**	1.6
		6	2437	19.50	19.50	23.0	0.638	
		6 (Turbo)	2437	19.00	19.00	23.0	0.548	
		11	2462	16.41			**	
		12	2467	14.30			**	
		13	2472	10.33			**	

Notes:

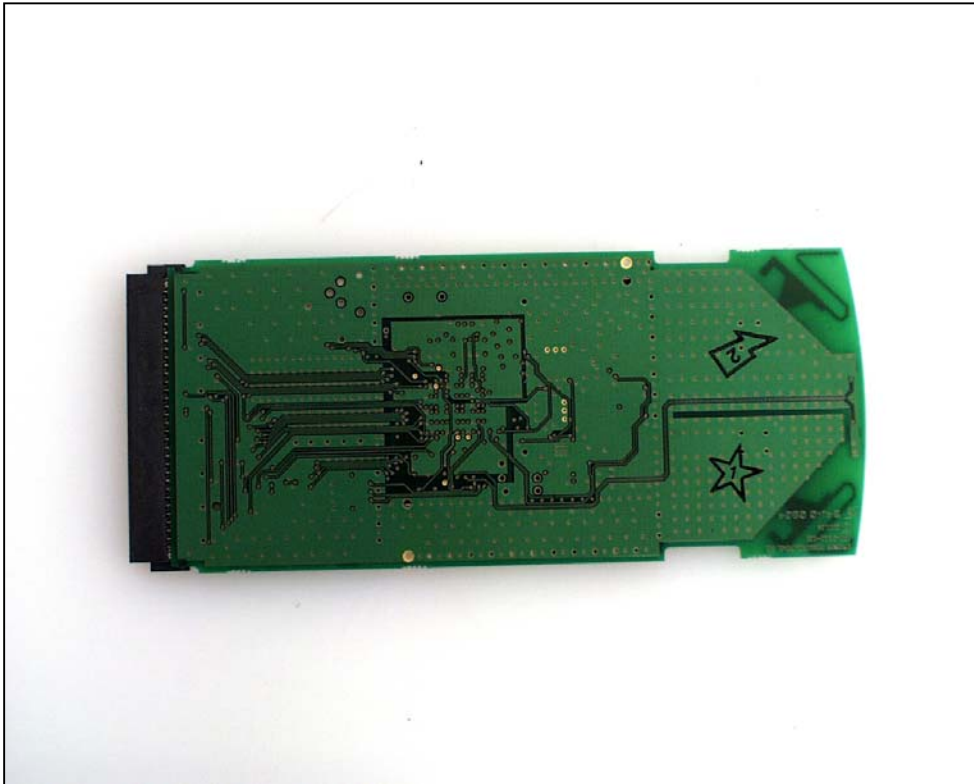
1. *: Conducted power - Average power.
2. **: The SAR measured at the middle channel for this configuration is at least 3 dB lower than SAR limit, testing at the low & high channel is option.
3. SAR tested for a lap-held position with the bottom of the computer in direct contact against a flat phantom.
4. Spacing between EUT and phantom: 12 mm
5. Please see attachment for the detailed measurement data and plots showing the maximum SAR location of the EUT.

9. PHOTOS

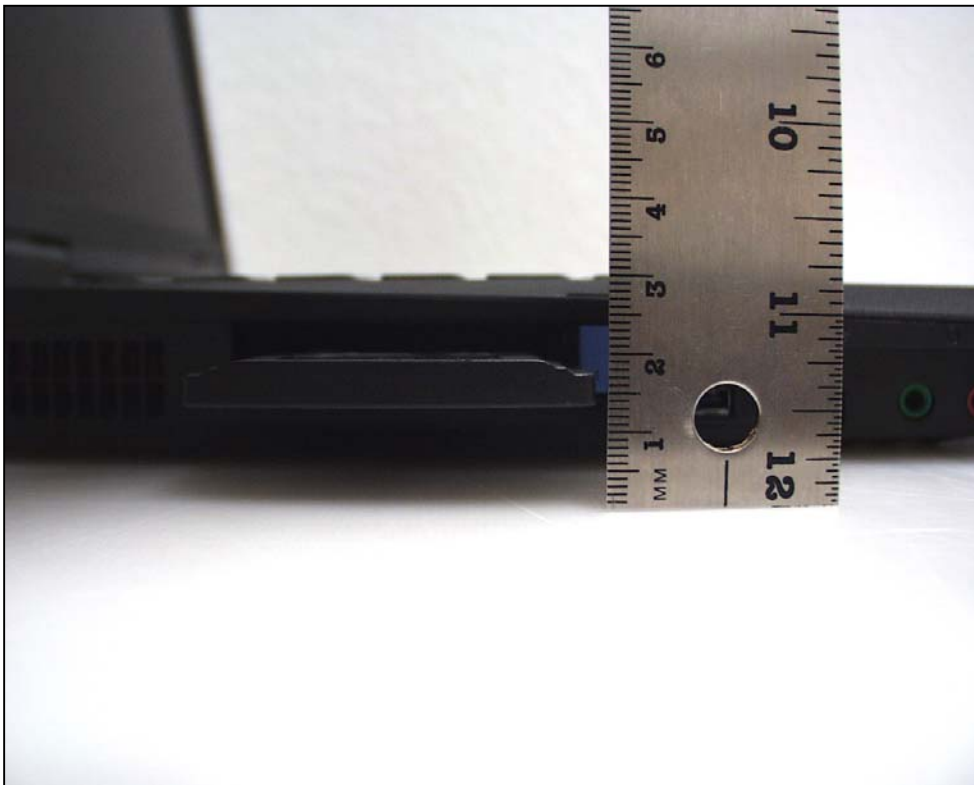
EQUIPMENT UNDER TEST (1/2)



EQUIPMENT UNDER TEST (2/2)



HOST # 1: IBM, 2897



HOST # 2: TOSHIBA, TECRA 8200



HOST # 3: DELL, PP01L



10. EQUIPMENT LIST & CALIBRATION STATUS

<u>Name of Equipment</u>	<u>Manufacturer</u>	<u>Type/Model</u>	<u>Serial Number</u>	<u>Cal. Due date</u>
S-Parameter Network Analyzer	Agilent	8753ES-6	US39173569	8/8/04
Electronic Probe kit	Hewlett Packard	85070C	N/A	N/A
Signal General	HP	83732B	US34490599	4/4/04
Power Meter	Giga-tronics	8651A	8651404	5/12/04
Power Sensor	Giga-tronics	80701A	1834588	5/12/04
Amplifier	Mini-Circuits	ZVE-8G	0360	N/A
Amplifier	Mini-Circuits	ZHL-42W	D072701-5	N/A
Radio Communication Tester	Rohde & Schwarz	CMU 200	838114/032	12/1/04
Data Acquisition Electronics (DAE)	SPEAG	DAE3 V1	500	12/23/04
Dosimetric E-Field Probe	SPEAG	ES3DV2	3021	7/29/04
System Validation Dipole	SPEAG	D2450V2	706	6/4/2004
Probe Alignment Unit	SPEAG	LB (V2)	261	N/A
Robot	Staubli	RX90B L	F00/5H31A1/A/01	N/A
SAM Twin Phantom	SPEAG	TP-1785	QD 000 P40 CA	N/A
SAM Twin Phantom	SPEAG	TP-1015	N/A	N/A
Simulating Liquids	CCS	M2450	N/A	Within 24 hrs of first test
Simulating Liquids	CCS	H2450	N/A	Within 24 hrs of first test

11. REFERENCES

- [1] Federal Communications Commission, "Report and order: Guidelines for evaluating the environmental effects of radiofrequency radiation", Tech. Rep. FCC 96-326, FCC, Washington, D.C. 20554, 1996.
- [2] David L. Means Kwok Chan, Robert F. Cleveland, "Evaluating compliance with FCC guidelines for human exposure to radiofrequency electromagnetic fields", Tech. Rep., Federal Communication Commission, Office of Engineering & Technology, Washington, DC, 1997.
- [3] Thomas Schmid, Oliver Egger, and Niels Kuster, "Automated E-field scanning system for dosimetric assessments", IEEE Transactions on Microwave Theory and Techniques, vol. 44, pp. 105-113, Jan. 1996.
- [4] Niels Kuster, Ralph Kastle, and Thomas Schmid, "Dosimetric evaluation of mobile communications equipment with known precision", IEEE Transactions on Communications, vol. E80-B, no. 5, pp. 645-652, May 1997.
- [5] CENELEC, "Considerations for evaluating of human exposure to electromagnetic fields (EMFs) from mobile telecommunication equipment (MTE) in the frequency range 30MHz - 6GHz", Tech. Rep., CENELEC, European Committee for Electrotechnical Standardization, Brussels, 1997.
- [6] ANSI, ANSI/IEEE C95.1-1992: IEEE Standard for Safety Levels with Respect to Human Exposure to Radio Frequency Electromagnetic Fields, 3 kHz to 300 GHz, The Institute of Electrical and Electronics Engineers, Inc., New York, NY 10017, 1992.
- [7] Katja Pokovic, Thomas Schmid, and Niels Kuster, "Robust setup for precise calibration of E-field probes in tissue simulating liquids at mobile communications frequencies", in ICECOM '97, Dubrovnik, October 15-17, 1997, pp. 120-124.
- [8] Katja Pokovic, Thomas Schmid, and Niels Kuster, "E-field probe with improved isotropy in brain simulating liquids", in Proceedings of the ELMAR, Zadar, Croatia, 23-25 June, 1996, pp. 172-175.
- [9] Volker Hombach, Klaus Meier, Michael Burkhardt, Eberhard Kuhn, and Niels Kuster, "The dependence of EM energy absorption upon human head modeling at 900 MHz", IEEE Transactions on Microwave Theory and Techniques, vol. 44, no. 10, pp. 1865-1873, Oct. 1996.
- [10] Klaus Meier, Ralf Kastle, Volker Hombach, Roger Tay, and Niels Kuster, "The dependence of EM energy absorption upon human head modeling at 1800 MHz", IEEE Transactions on Microwave Theory and Techniques, Oct. 1997, in press.
- [11] W. Gander, Computermathematik, Birkhaeuser, Basel, 1992.
- [12] W. H. Press, S. A. Teukolsky, W. T. Vetterling, and B. P. Flannery, Numerical Recipes in C, The Art of Scientific Computing, Second Edition, Cambridge University Press, 1992. Dosimetric Evaluation of Sample device, month 1998 9
- [13] NIS81 NAMAS, "The treatment of uncertainty in EMC measurement", Tech. Rep., NAMAS Executive, National Physical Laboratory, Teddington, Middlesex, England, 1994.
- [14] Barry N. Taylor and Christ E. Kuyatt, "Guidelines for evaluating and expressing the uncertainty of NIST measurement results", Tech. Rep., National Institute of Standards and Technology, 1994. Dosimetric Evaluation of Sample device, month 1998 10

12. ATTACHMENTS

No.	Contents	No. of page (s)
1	System Performance Check Plots	4
2-1	SAR Test Plots - Host # 1	15
2-2	SAR Test Plots - Host # 2	11
2-3	SAR Test Plots - Host # 3	9
3	Probe ES3DV2-SN: 3021	13
4	System Validation Dipole D2450V2, S/N: 706	7

End of Report