

# System Validation - D2450V2 S/N:706

(Antenna input power: 250 mW)

SAM-1; Flat

Probe: ET3DV6 - SN1578; ConvF(4.50,4.50,4.50); Crest factor: 1.0

Head 2450MHz:  $\sigma = 1.88$  mho/m  $\epsilon_r = 38.7$   $\rho = 1.00$  g/cm<sup>3</sup>

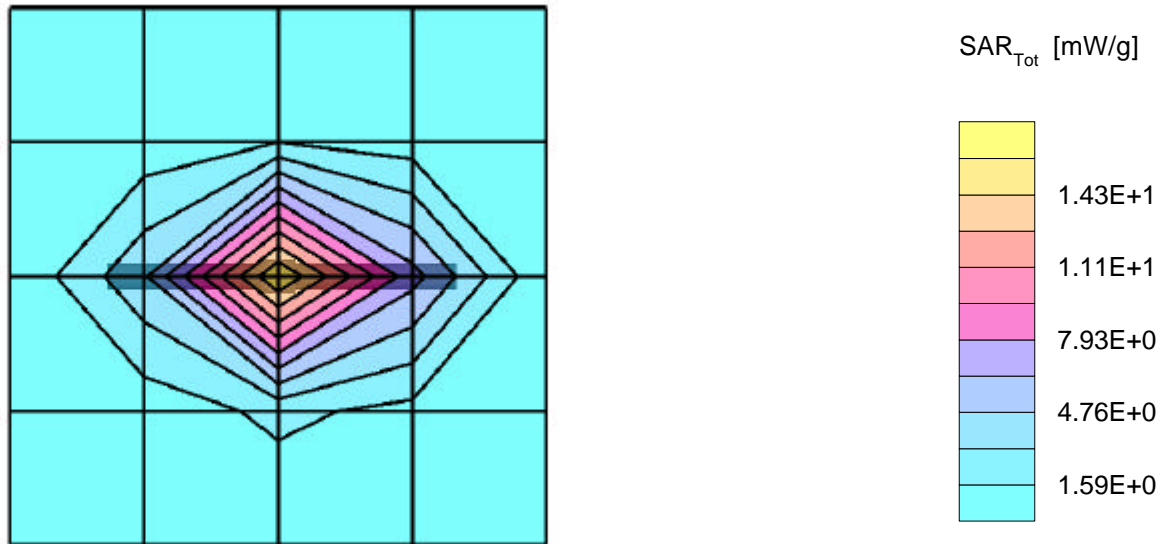
Cube 5x5x7: Peak: 29.8 mW/g, SAR (1g): 14.3 mW/g, SAR (10g): 6.55 mW/g, (Worst-case extrapolation)

Penetration depth: 6.4 (6.2, 7.1) [mm]

Powerdrift: -0.00 dB

Ambient Temperature (degree C): 23.0

Liquid Temperature (degree C): 21.2



# System Validation - D2450V2 S/N:706

(Antenna input power: 250 mW)

SAM-1;  
Probe: ET3DV6 - SN1578; ConvF(4.50,4.50,4.50); Crest factor: 1.0  
Head 2450MHz:  $\sigma = 1.88 \text{ mho/m}$   $\epsilon_r = 38.7$   $\rho = 1.00 \text{ g/cm}^3$   
: , , ()  
Penetration depth: 6.5 (6.2, 7.1) [mm]

Ambient Temperature (degree C): 23.0  
Liquid Temperature (degree C): 21.2

