

07/29/02

Atheros_CB22; Flat position; 2412 MHz

Frequency: 2450 MHz; Crest factor: 1.0

Medium: Muscle 2450 MHz: $s = 2.04$ mho/m $\epsilon_r = 50.8$ $\rho = 1.00$ g/cm³

SAM-1 Phantom; Flat Section; Position: (90°,90°)

Probe: ET3DV6 - SN1578; ConvF(4.10,4.10,4.10);

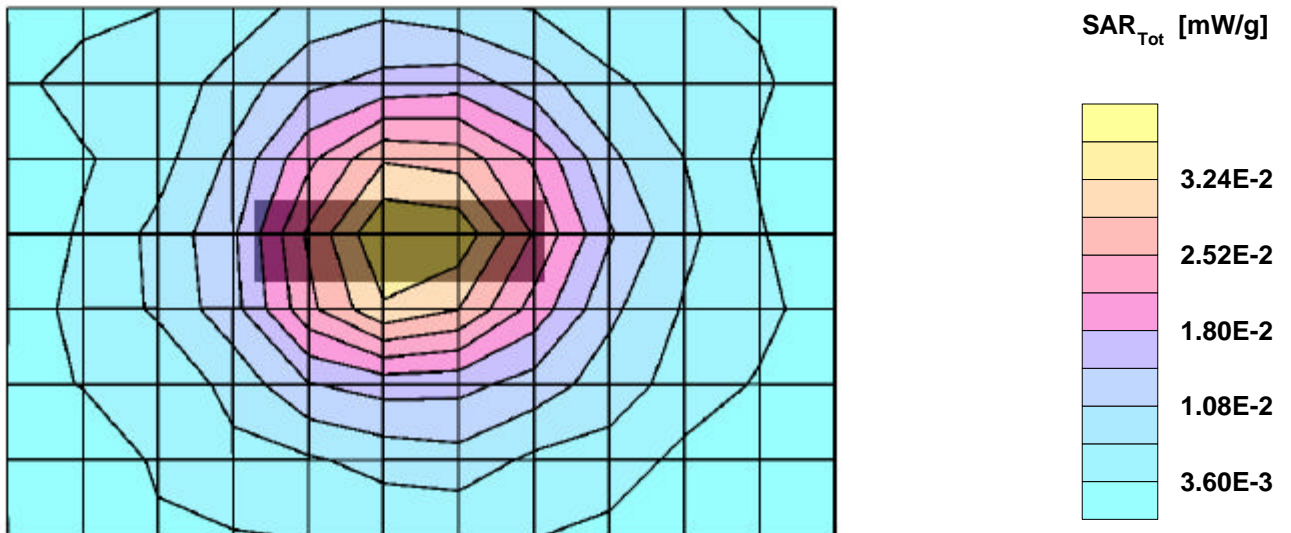
SAR:Cube 5x5x7: Peak: 0.0611 mW/g, SAR (1g): 0.0343 mW/g, SAR (10g): 0.0194 mW/g, (Worst-case extrapolation)

Penetration depth: 7.9 (7.8, 8.1) [mm]; Powerdrift: -0.06 dB

Coarse: Dx = 14.0, Dy = 14.0, Dz = 10.0

Ambient Temperature (degree C): 23.0

Liquid Temperature (degree C): 20.1



07/29/02

Atheros_CB22; Flat position; 2412 MHz

Frequency: 2450 MHz; Crest factor: 1.0

Medium: Muscle 2450 MHz: $s = 2.04$ mho/m $\epsilon_r = 50.8$ $\rho = 1.00$ g/cm³

SAM-1 Phantom; Section; Position:

Probe: ET3DV6 - SN1578; ConvF(4.10,4.10,4.10);

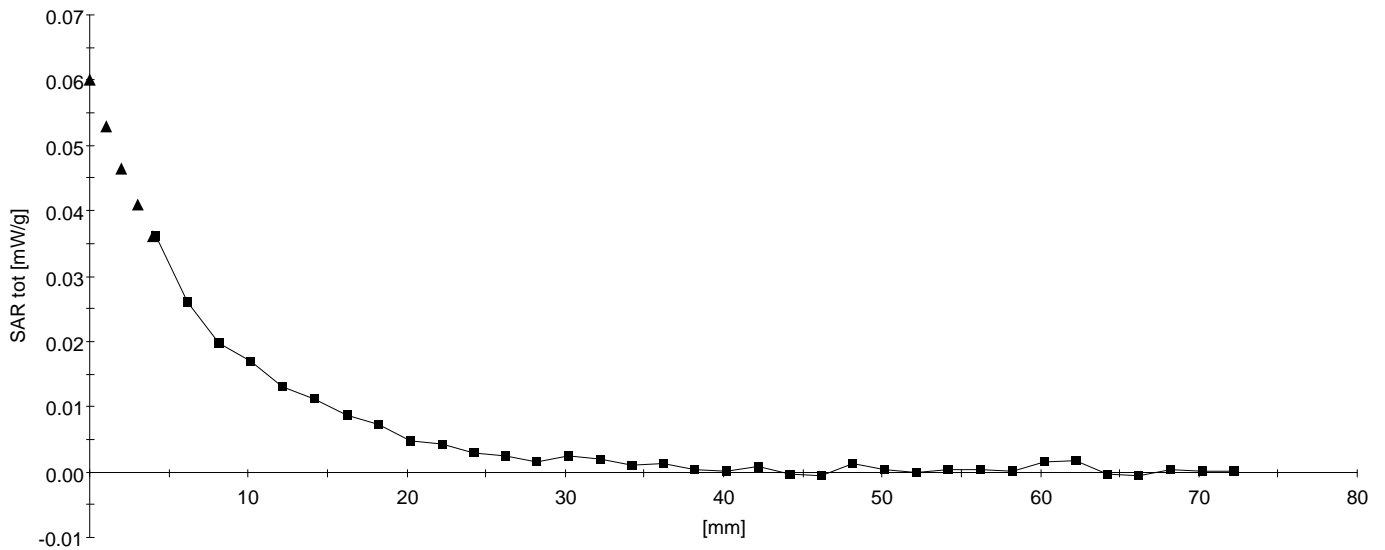
SAR: , , ()

Penetration depth: 8.2 (7.7, 9.2) [mm];

Z-Axis: Dx = 0.0, Dy = 0.0, Dz = 2.0

Ambient Temperature (degree C): 23.0

Liquid Temperature (degree C): 20.1



07/29/02

Atheros_CB22; Flat position; Frequency: 2412 MHz

Frequency: 2450 MHz; Crest factor: 1.0

Medium: Muscle 2450 MHz: $s = 2.04$ mho/m $\epsilon_r = 50.8$ $\rho = 1.00$ g/cm³

SAM-1 Phantom; Flat Section; Position: (90°,90°)

Probe: ET3DV6 - SN1578; ConvF(4.10,4.10,4.10);

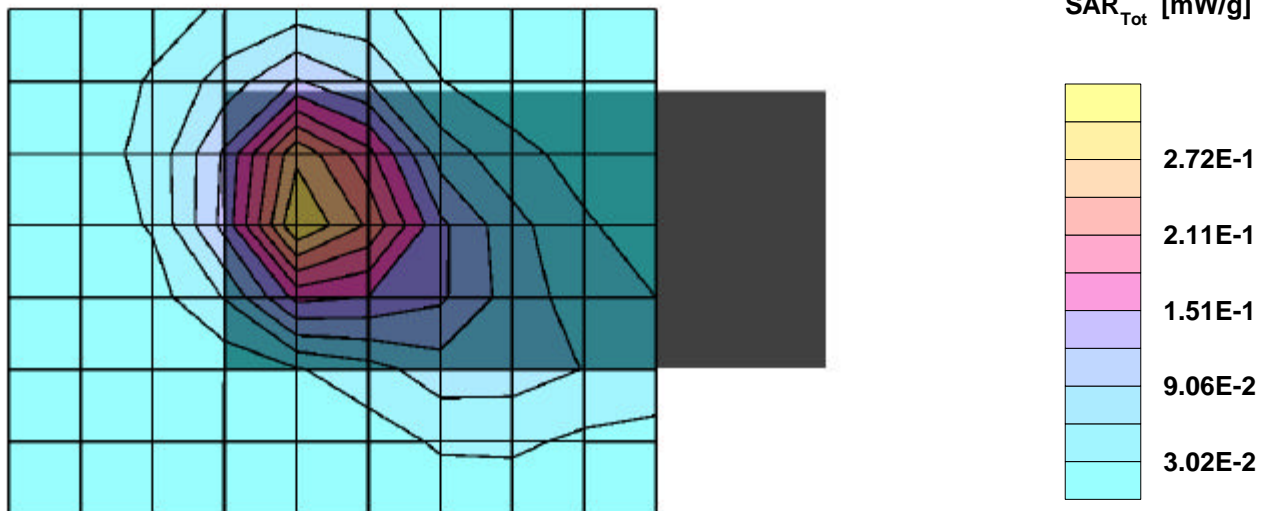
SAR:Cube 5x5x7: Peak: 0.536 mW/g, SAR (1g): 0.291 mW/g, SAR (10g): 0.157 mW/g, (Worst-case extrapolation)

Penetration depth: 8.2 (7.7, 9.2) [mm]; Powerdrift: 0.03 dB

Coarse: Dx = 14.0, Dy = 14.0, Dz = 10.0

Ambient Temperature (degree C): 23.0

Liquid Temperature (degree C): 20.2



07/29/02

Atheros_CB22; Flat position; Frequency: 2412 MHz

Frequency: 2450 MHz; Crest factor: 1.0

Medium: Muscle 2450 MHz: $s = 2.04$ mho/m $\epsilon_r = 50.8$ $\rho = 1.00$ g/cm³

SAM-1 Phantom; Section; Position:

Probe: ET3DV6 - SN1578; ConvF(4.10,4.10,4.10);

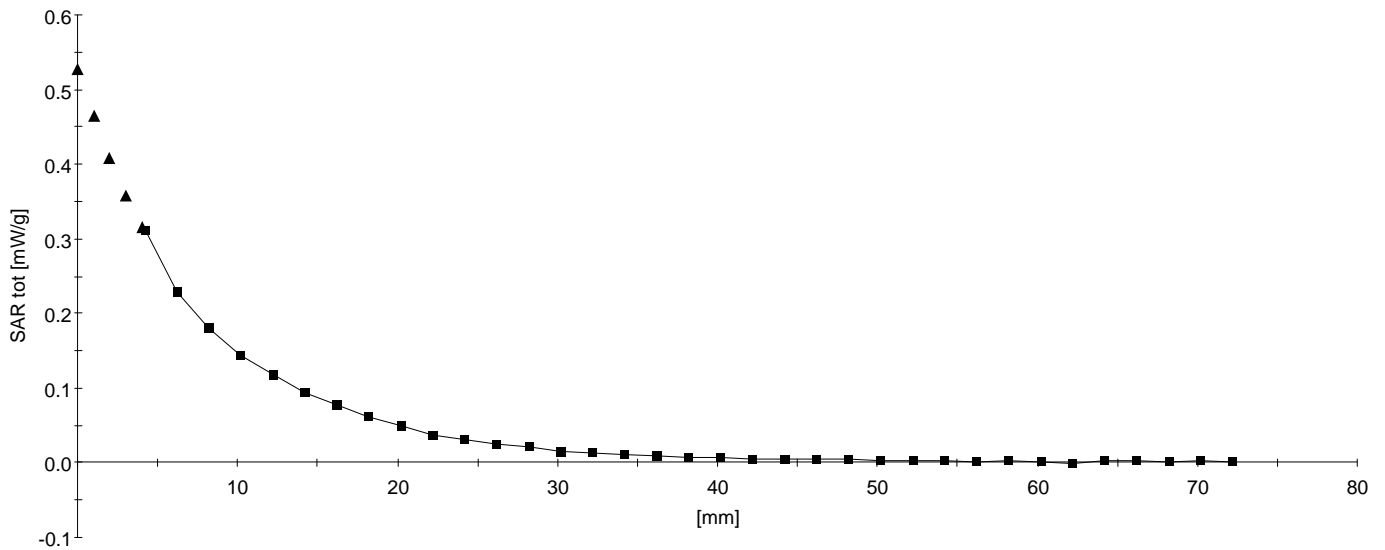
SAR: , , ()

Penetration depth: 8.4 (7.7, 9.5) [mm];

Z-Axis: Dx = 0.0, Dy = 0.0, Dz = 2.0

Ambient Temperature (degree C): 23.0

Liquid Temperature (degree C): 20.2



07/30/02

Atheros_CB22; Flat position; Frequency: 2412 MHz

Frequency: 2450 MHz; Crest factor: 1.0

Medium: Muscle 2450 MHz: $s = 2.04$ mho/m $\epsilon_r = 50.8$ $\rho = 1.00$ g/cm³

SAM-1 Phantom; Flat Section; Position: (90°,90°)

Probe: ET3DV6 - SN1578; ConvF(4.10,4.10,4.10);

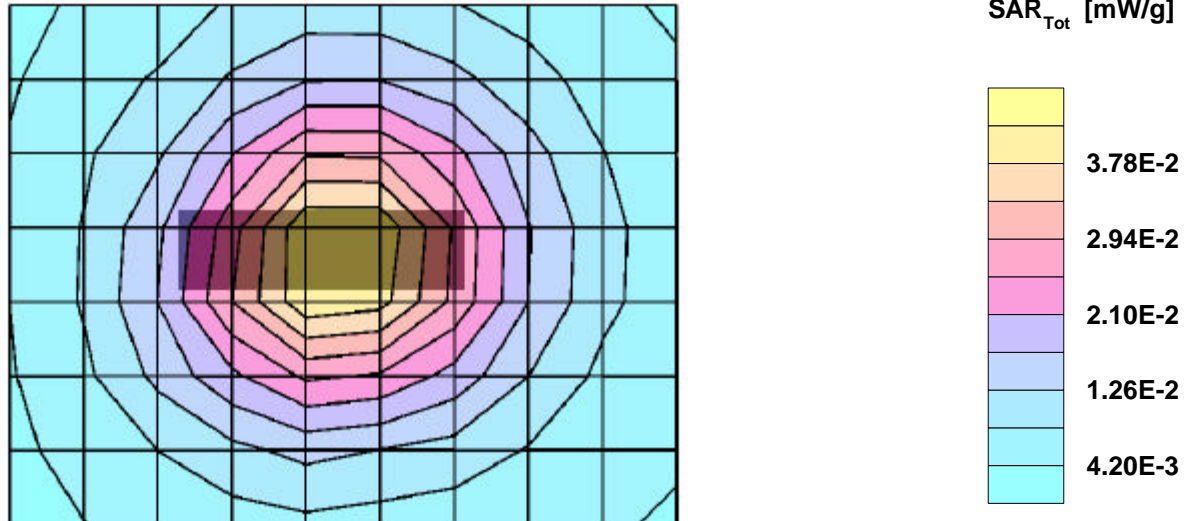
SAR:Cube 5x5x7: Peak: 0.0778 mW/g, SAR (1g): 0.0431 mW/g, SAR (10g): 0.0247 mW/g, (Worst-case extrapolation)

Penetration depth: 8.1 (7.7, 9.0) [mm]; Powerdrift: 0.06 dB

Coarse: Dx = 14.0, Dy = 14.0, Dz = 10.0

Ambient Temperature (degree C): 23.0

Liquid Temperature (degree C): 21.1



07/30/02

Atheros_CB22; Flat position; Frequency: 2412 MHz

Frequency: 2450 MHz; Crest factor: 1.0

Medium: Muscle 2450 MHz: $s = 2.04$ mho/m $\epsilon_r = 50.8$ $\rho = 1.00$ g/cm³

SAM-1 Phantom; Section; Position:

Probe: ET3DV6 - SN1578; ConvF(4.10,4.10,4.10);

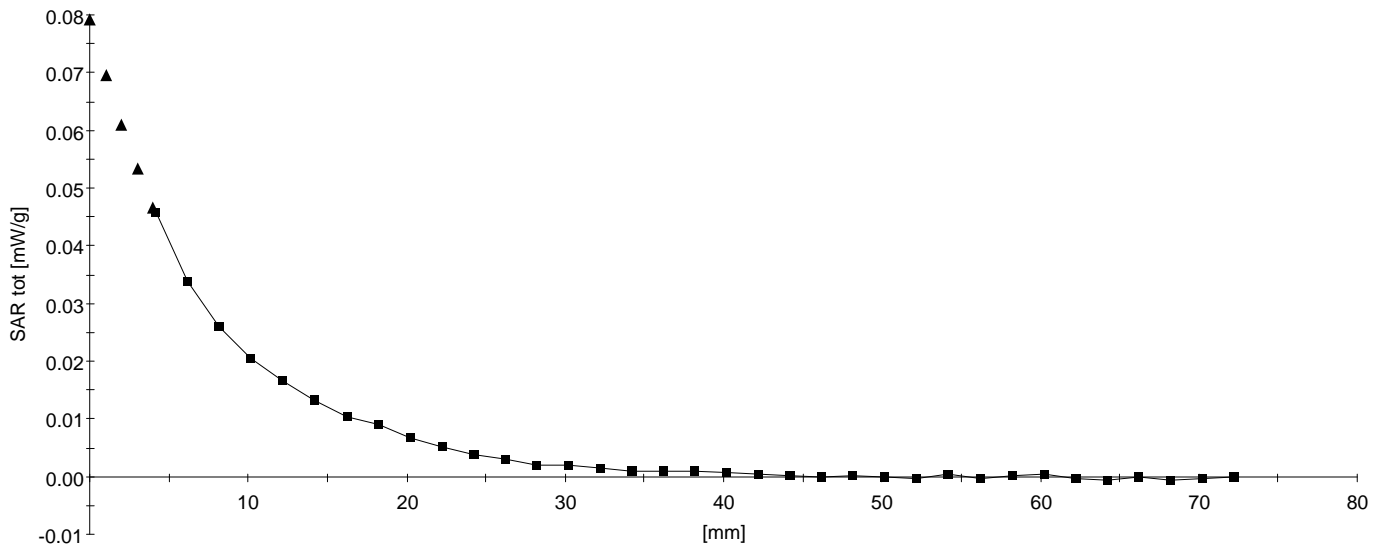
SAR: , , ()

Penetration depth: 8.0 (7.4, 9.2) [mm];

Z-Axis: Dx = 0.0, Dy = 0.0, Dz = 2.0

Ambient Temperature (degree C): 23.0

Liquid Temperature (degree C): 21.1



07/30/02

Atheros_CB22; Flat position; Frequency: 2412 MHz

Frequency: 2450 MHz; Crest factor: 1.0

Medium: Muscle 2450 MHz: $s = 2.04$ mho/m $\epsilon_r = 50.8$ $\rho = 1.00$ g/cm³

SAM-1 Phantom; Flat Section; Position: (90°,90°)

Probe: ET3DV6 - SN1578; ConvF(4.10,4.10,4.10);

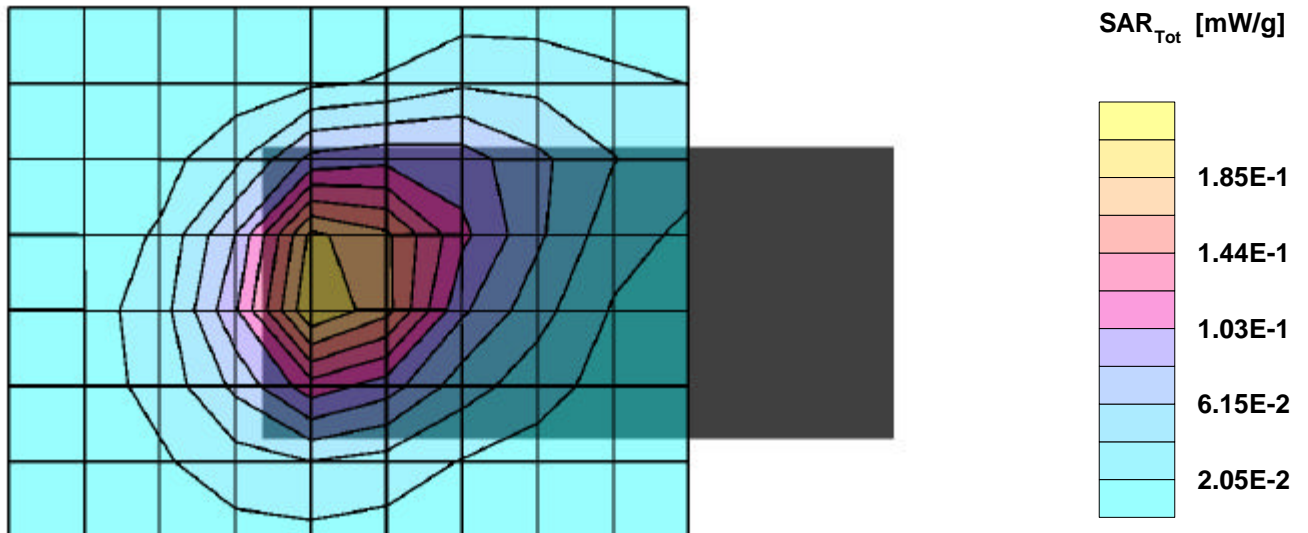
SAR:Cube 5x5x7: Peak: 0.393 mW/g, SAR (1g): 0.207 mW/g, SAR (10g): 0.111 mW/g, (Worst-case extrapolation)

Penetration depth: 7.7 (7.2, 8.8) [mm]; Powerdrift: -0.05 dB

Coarse: Dx = 14.0, Dy = 14.0, Dz = 10.0

Ambient Temperature (degree C): 23.0

Liquid Temperature (degree C): 20.0



07/30/02

Atheros_CB22; Flat position; Frequency: 2412 MHz

Frequency: 2450 MHz; Crest factor: 1.0

Medium: Muscle 2450 MHz: $s = 2.04$ mho/m $\epsilon_r = 50.8$ $\rho = 1.00$ g/cm³

SAM-1 Phantom; Section; Position:

Probe: ET3DV6 - SN1578; ConvF(4.10,4.10,4.10);

SAR: , , ()

Penetration depth: 7.9 (7.4, 8.9) [mm];

Z-Axis: Dx = 0.0, Dy = 0.0, Dz = 2.0

Ambient Temperature (degree C): 23.0

Liquid Temperature (degree C): 20.0

