

Test Laboratory: Compliance Certification Services Inc.

D2450V2 SN-728 Body

DUT: Dipole 2450 MHz; Type: D2450V2; Serial: D2450V2 - SN:728

Communication System: CW2450; Frequency: 2450 MHz; Duty Cycle: 1:1

Medium parameters used: $f = 2450$ MHz; $\sigma = 1.98$ mho/m; $\epsilon_r = 51.5$; $\rho = 1000$ kg/m³

Phantom section: Flat Section

Air Temperature: 24.6 deg C; Liquid Temperature: 23.6 deg C

Area Scan Find Secondary Maximum Within 2dB and with a peak SAR value greater than 0.0012W/kg

DASY4 Configuration:

- Probe: EX3DV4 - SN3554; ConvF(5.93, 5.93, 5.93);
- Sensor-Surface: 2.5mm (Mechanical Surface Detection)
- Electronics: DAE4 Sn558; Calibrated: 9/19/2008
- Phantom: Flat Phantom ELI4.0; Type: QDOVA001BA; Serial: SN: 1052
- Measurement SW: DASY4, V4.7 Build 80; Postprocessing SW: SEMCAD, V1.8 Build 186

Pin=250mW,d=10mm/Area Scan (6x6x1): Measurement grid: dx=15mm, dy=15mm

Maximum value of SAR (measured) = 14.1 mW/g

Pin=250mW,d=10mm/Zoom Scan (7x7x7)/Cube 0: Measurement grid: dx=5mm, dy=5mm, dz=5mm

Reference Value = 97.9 V/m; Power Drift = -0.032 dB

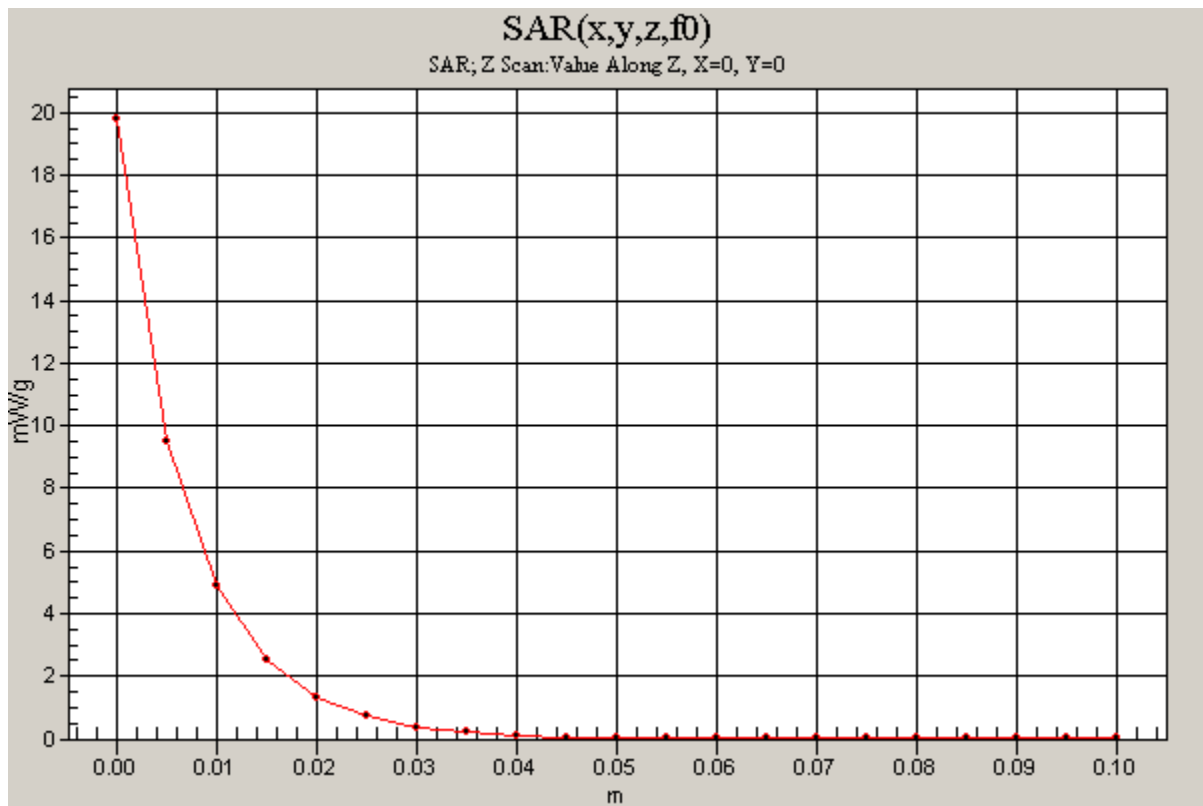
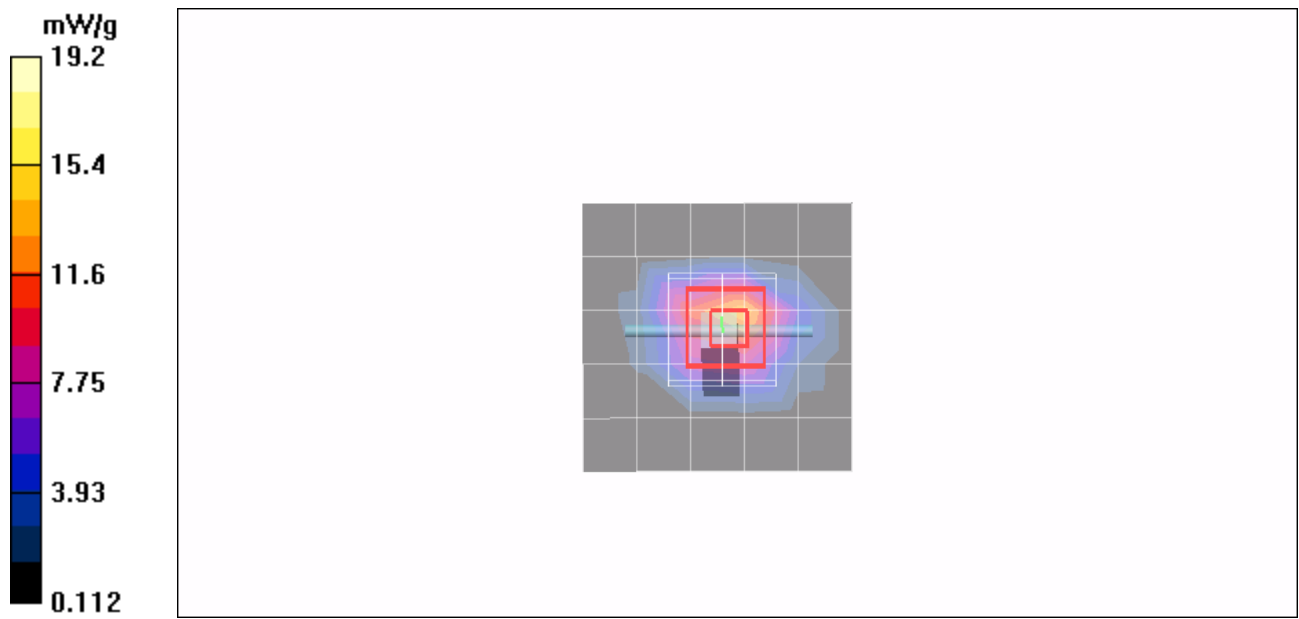
Peak SAR (extrapolated) = 28.0 W/kg

SAR(1 g) = 13.3 mW/g; SAR(10 g) = 6.17 mW/g

Maximum value of SAR (measured) = 19.2 mW/g

Pin=250mW,d=10mm/Z Scan (1x1x21): Measurement grid: dx=20mm, dy=20mm, dz=5mm

Maximum value of SAR (measured) = 19.8 mW/g



Test Laboratory: Compliance Certification Services Inc.

80211b Bottom Flat mode AR5B95

DUT: AR5B95; Type: AR5B95; Serial: N/A

Communication System: IEEE 802.11b WLAN; Frequency: 2462 MHz; Duty Cycle: 1:1
Medium parameters used: $f = 2462$ MHz; $\sigma = 1.99$ mho/m; $\epsilon_r = 51.4$; $\rho = 1000$ kg/m³

Phantom section: Flat Section

Air Temperature: 24.6 deg C; Liquid Temperature: 23.6 deg C

Area Scan Find Secondary Maximum Within 2dB and with a peak SAR value greater than 0.0012W/kg

DASY4 Configuration:

- Probe: EX3DV4 - SN3554; ConvF(5.93, 5.93, 5.93);
- Sensor-Surface: 2.5mm (Mechanical Surface Detection)
- Electronics: DAE4 Sn558; Calibrated: 9/19/2008
- Phantom: Flat Phantom ELI4.0; Type: QDOVA001BA; Serial: SN: 1052
- Measurement SW: DASY4, V4.7 Build 80; Postprocessing SW: SEMCAD, V1.8 Build 186

High CH Rate 1M/Area Scan (15x19x1): Measurement grid: dx=15mm, dy=15mm

Maximum value of SAR (measured) = 0.074 mW/g

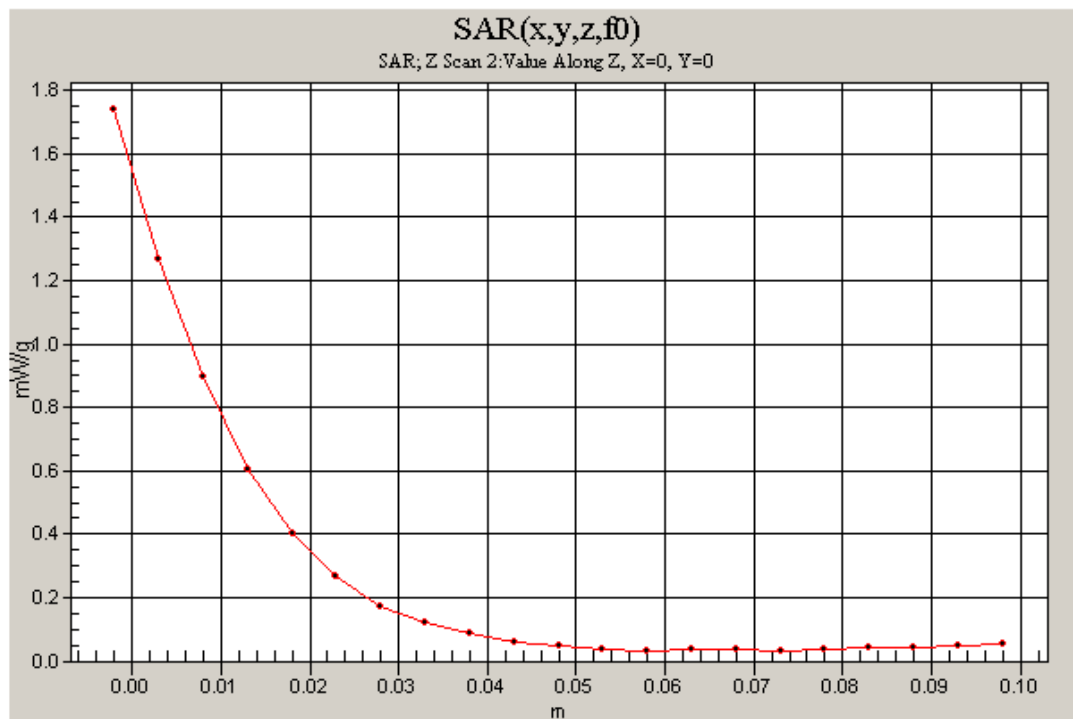
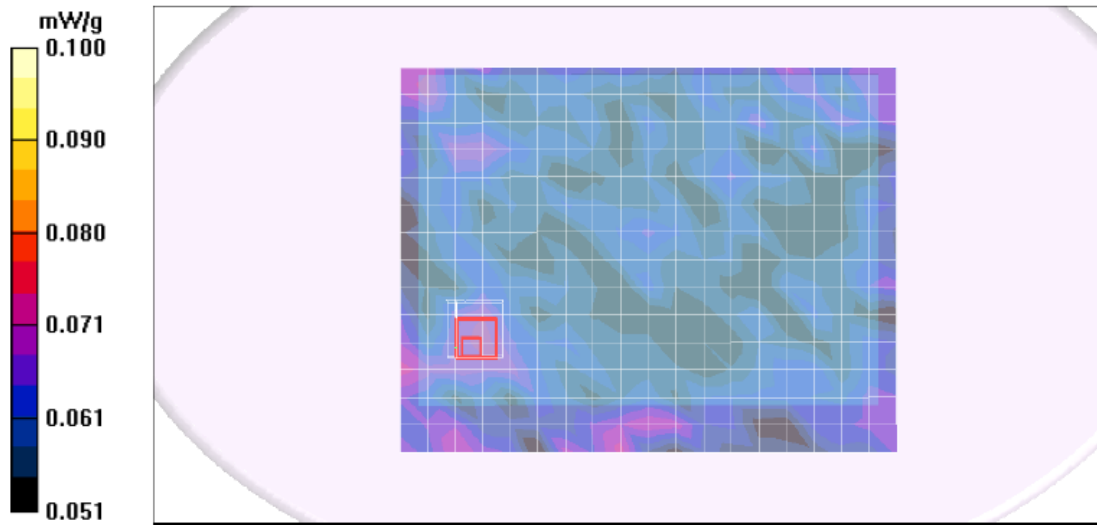
High CH Rate 1M/Zoom Scan (7x7x9)/Cube 0: Measurement grid: dx=5mm, dy=5mm, dz=3mm

Reference Value = 5.85 V/m; Power Drift = -0.141 dB

Peak SAR (extrapolated) = 0.089 W/kg

SAR(1 g) = 0.071 mW/g; SAR(10 g) = 0.067 mW/g

Maximum value of SAR (measured) = 0.081 mW/g



Test Laboratory: Compliance Certification Services Inc.

80211g Bottom Flat mode AR5B95

DUT: AR5B95; Type: AR5B95; Serial: N/A

Communication System: IEEE 802.11g WLAN; Frequency: 2437 MHz; Duty Cycle: 1:1

Medium parameters used (interpolated): $f = 2437$ MHz; $\sigma = 1.96$ mho/m; $\epsilon_r = 51.5$; $\rho = 1000$ kg/m³

Phantom section: Flat Section

Air Temperature: 24.6 deg C; Liquid Temperature: 23.6 deg C

Area Scan Find Secondary Maximum Within 2dB and with a peak SAR value greater than 0.0012W/kg

DASY4 Configuration:

- Probe: EX3DV4 - SN3554; ConvF(5.93, 5.93, 5.93);
- Sensor-Surface: 2.5mm (Mechanical Surface Detection)
- Electronics: DAE4 Sn558; Calibrated: 9/19/2008
- Phantom: Flat Phantom ELI4.0; Type: QDOVA001BA; Serial: SN: 1052
- Measurement SW: DASY4, V4.7 Build 80; Postprocessing SW: SEMCAD, V1.8 Build 186

Middle CH Rate 6M/Area Scan (9x19x1): Measurement grid: dx=15mm, dy=15mm

Maximum value of SAR (measured) = 0.009 mW/g

Middle CH Rate 6M/Zoom Scan (7x7x9)/Cube 0: Measurement grid: dx=5mm, dy=5mm, dz=3mm

Reference Value = 5.01 V/m; Power Drift = -0.115 dB

Peak SAR (extrapolated) = 0.011 W/kg

SAR(1 g) = 0.00598 mW/g; SAR(10 g) = 0.00526 mW/g

Maximum value of SAR (measured) = 0.008 mW/g

Middle CH Rate 6M/Zoom Scan (7x7x9)/Cube 1: Measurement grid:

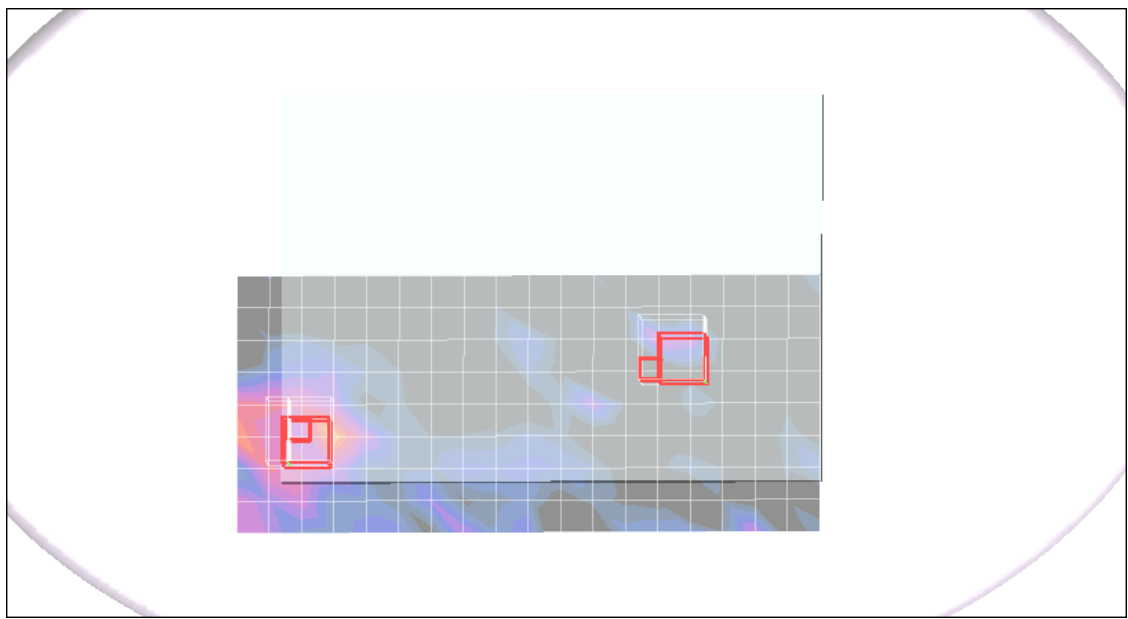
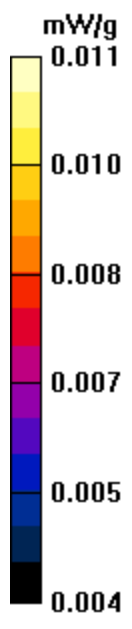
dx=5mm, dy=5mm, dz=3mm

Reference Value = 5.01 V/m; Power Drift = -11.5 dB

Peak SAR (extrapolated) = 0.019 W/kg

SAR(1 g) = 0.00788 mW/g; SAR(10 g) = 0.00728 mW/g

Maximum value of SAR (measured) = 0.011 mW/g



Test Laboratory: Compliance Certification Services Inc.

80211g Bottom Flat mode AR5B95 HT20

DUT: AR5B95; Type: AR5B95; Serial: N/A

Communication System: IEEE 802.11g WLAN; Frequency: 2437 MHz; Duty Cycle: 1:1

Medium parameters used (interpolated): $f = 2437$ MHz; $\sigma = 1.96$ mho/m; $\epsilon_r = 51.5$; $\rho = 1000$ kg/m³

Phantom section: Flat Section

Air Temperature: 24.6 deg C; Liquid Temperature: 23.6 deg C

Area Scan Find Secondary Maximum Within 2dB and with a peak SAR value greater than 0.0012W/kg

DASY4 Configuration:

- Probe: EX3DV4 - SN3554; ConvF(5.93, 5.93, 5.93);
- Sensor-Surface: 2.5mm (Mechanical Surface Detection)
- Electronics: DAE4 Sn558; Calibrated: 9/19/2008
- Phantom: Flat Phantom ELI4.0; Type: QDOVA001BA; Serial: SN: 1052
- Measurement SW: DASY4, V4.7 Build 80; Postprocessing SW: SEMCAD, V1.8 Build 186

Middle CH Rate 6.5M/Area Scan (9x19x1): Measurement grid:

$dx=15$ mm, $dy=15$ mm

Maximum value of SAR (measured) = 0.009 mW/g

Middle CH Rate 6.5M/Zoom Scan (7x7x9)/Cube 0:

Measurement grid: $dx=5$ mm, $dy=5$ mm, $dz=3$ mm

Reference Value = 1.26 V/m; Power Drift = -0.146 dB

Peak SAR (extrapolated) = 0.011 W/kg

SAR(1 g) = 0.00672 mW/g; SAR(10 g) = 0.00586 mW/g

Maximum value of SAR (measured) = 0.010 mW/g

Middle CH Rate 6.5M/Zoom Scan (7x7x9)/Cube 1:

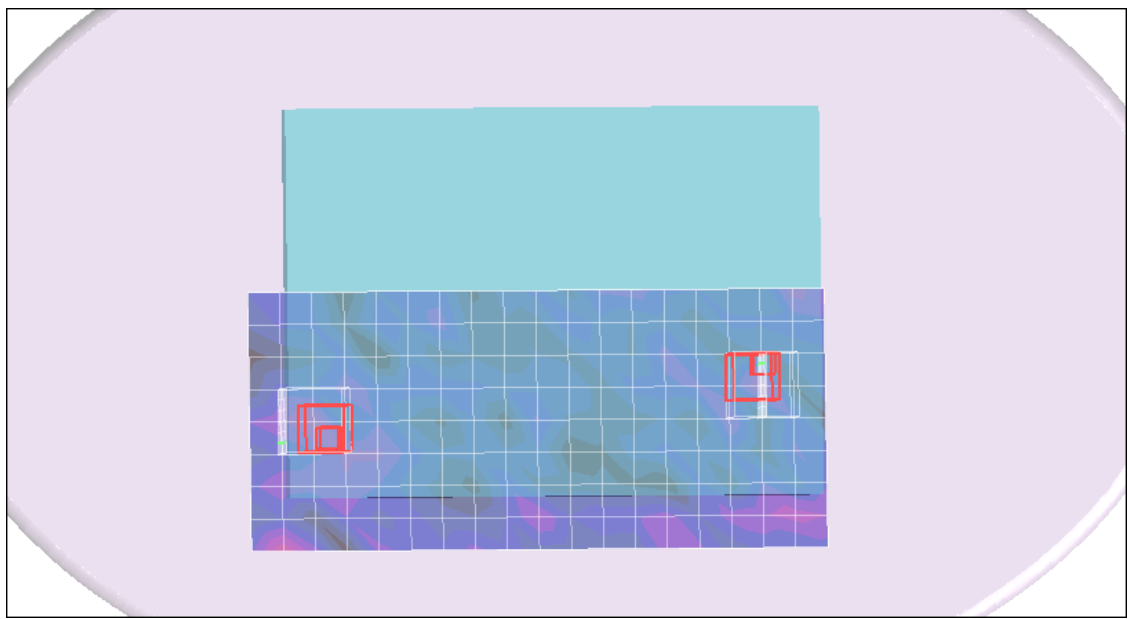
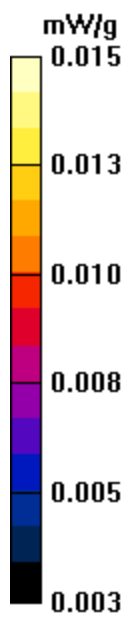
Measurement grid: $dx=5$ mm, $dy=5$ mm, $dz=3$ mm

Reference Value = 1.26 V/m; Power Drift = -0.146 dB

Peak SAR (extrapolated) = 0.009 W/kg

SAR(1 g) = 0.0064 mW/g; SAR(10 g) = 0.00586 mW/g

Maximum value of SAR (measured) = 0.010 mW/g



Test Laboratory: Compliance Certification Services Inc.

80211g Bottom Flat mode AR5B95 HT40

DUT: AR5B95; Type: AR5B95; Serial: N/A

Communication System: IEEE 802.11g WLAN; Frequency: 2437 MHz; Duty Cycle: 1:1

Medium parameters used (interpolated): $f = 2437$ MHz; $\sigma = 1.96$ mho/m; $\epsilon_r = 51.5$; $\rho = 1000$ kg/m³

Phantom section: Flat Section

Air Temperature: 24.6 deg C; Liquid Temperature: 23.6 deg C

Area Scan Find Secondary Maximum Within 2dB and with a peak SAR value greater than 0.0012W/kg

DASY4 Configuration:

- Probe: EX3DV4 - SN3554; ConvF(5.93, 5.93, 5.93);
- Sensor-Surface: 2.5mm (Mechanical Surface Detection)
- Electronics: DAE4 Sn558; Calibrated: 9/19/2008
- Phantom: Flat Phantom ELI4.0; Type: QDOVA001BA; Serial: SN: 1052
- Measurement SW: DASY4, V4.7 Build 80; Postprocessing SW: SEMCAD, V1.8 Build 186

Middle CH Rate 13.5M/Area Scan (9x19x1): Measurement

grid: dx=15mm, dy=15mm

Maximum value of SAR (measured) = 0.009 mW/g

Middle CH Rate 13.5M/Zoom Scan (7x7x9)/Cube 0:

Measurement grid: dx=5mm, dy=5mm, dz=3mm

Reference Value = 1.21 V/m; Power Drift = -0.138 dB

Peak SAR (extrapolated) = 0.010 W/kg

SAR(1 g) = 0.00602 mW/g; SAR(10 g) = 0.00545 mW/g

Maximum value of SAR (measured) = 0.008 mW/g

Middle CH Rate 13.5M/Zoom Scan (7x7x9)/Cube 1:

Measurement grid: dx=5mm, dy=5mm, dz=3mm

Reference Value = 1.21 V/m; Power Drift = -0.138 dB

Peak SAR (extrapolated) = 0.011 W/kg

SAR(1 g) = 0.006 mW/g; SAR(10 g) = 0.00515 mW/g

Maximum value of SAR (measured) = 0.008 mW/g

