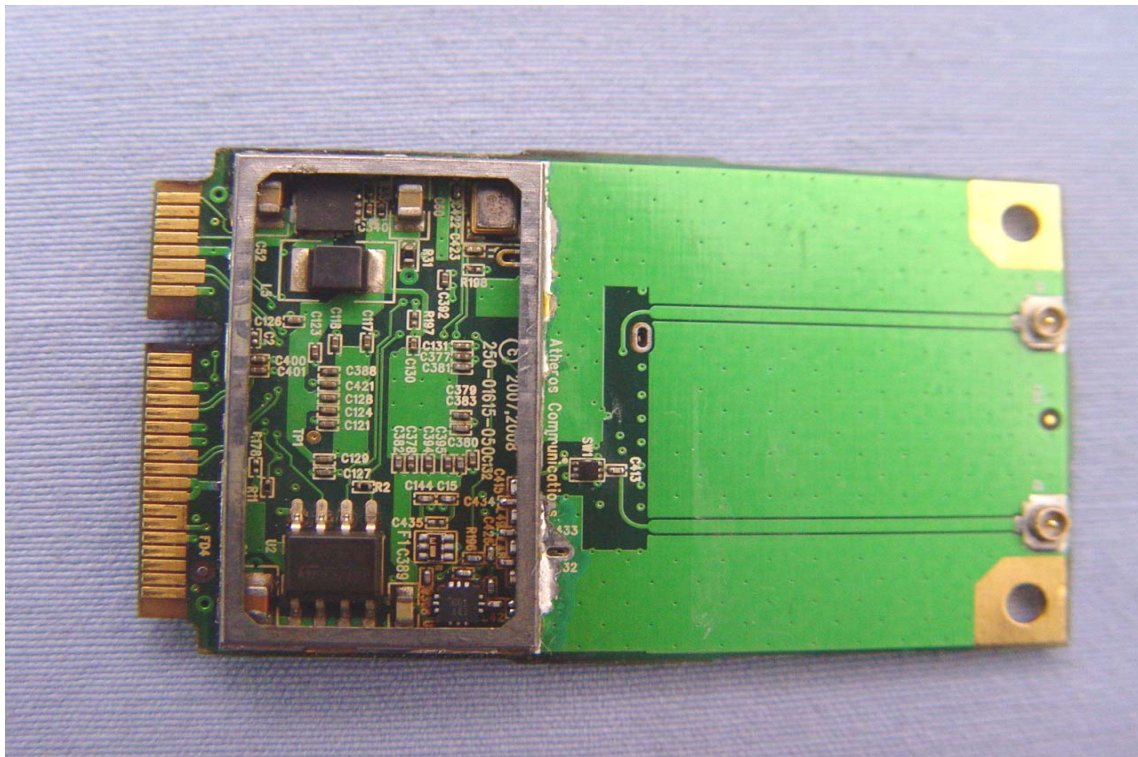
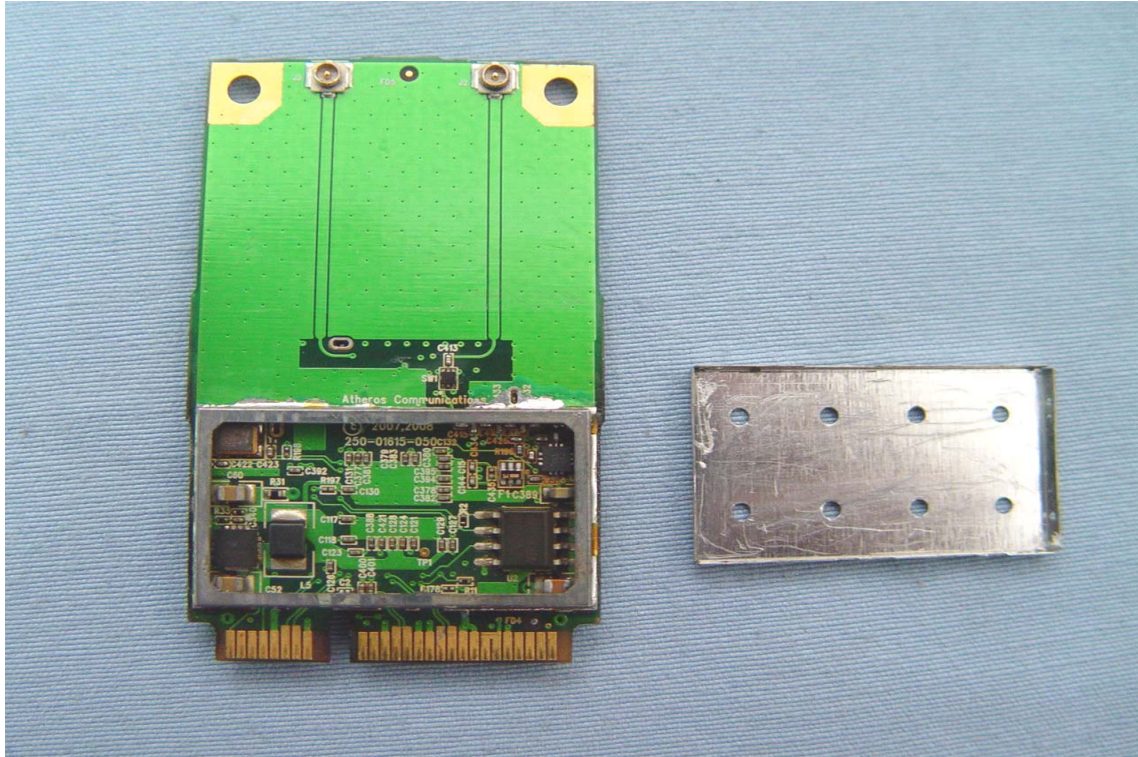
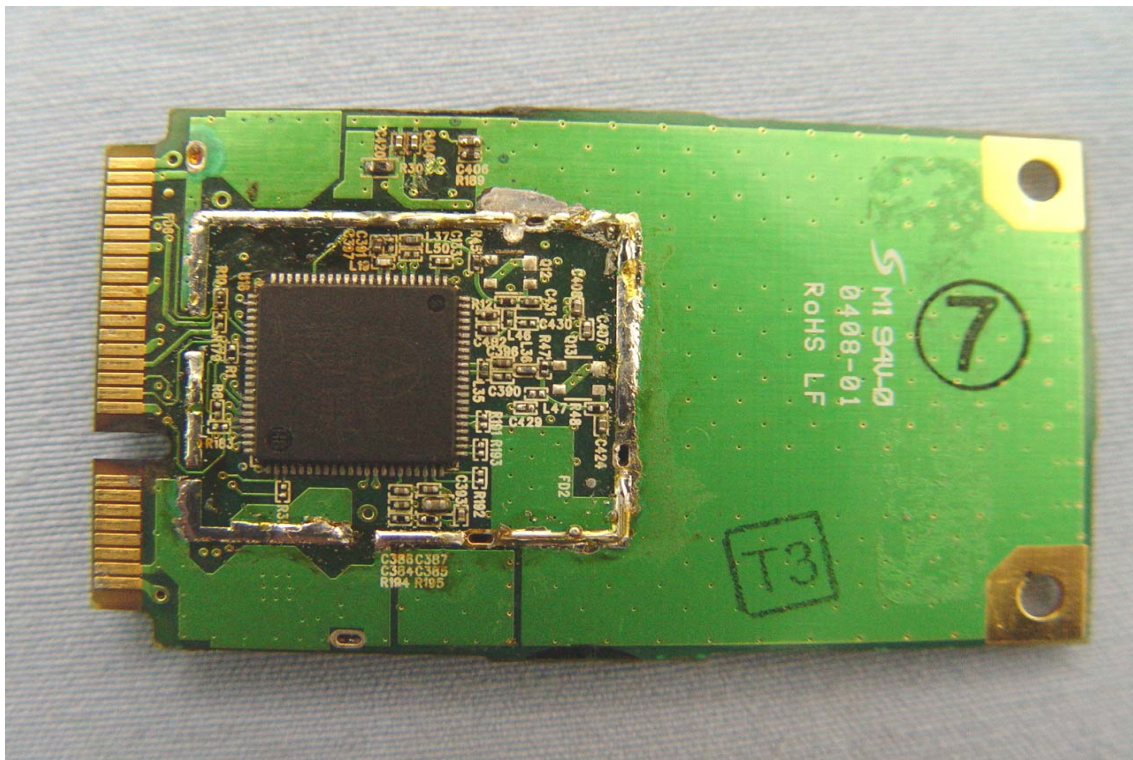
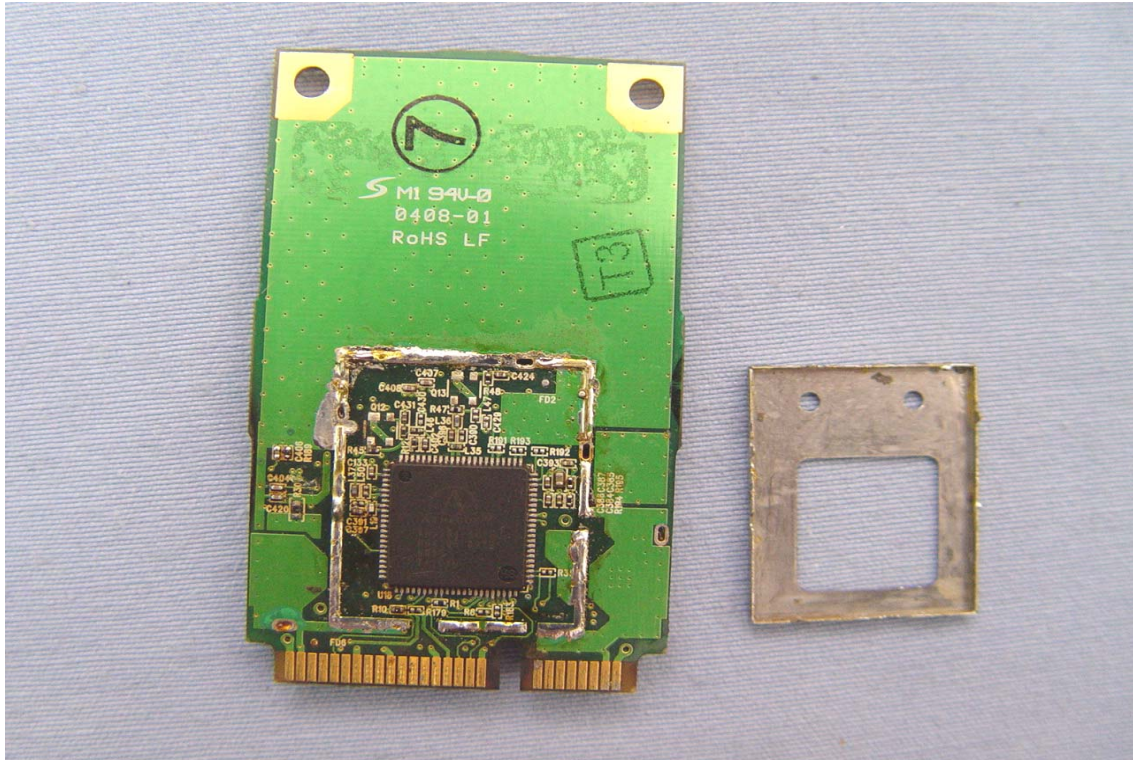


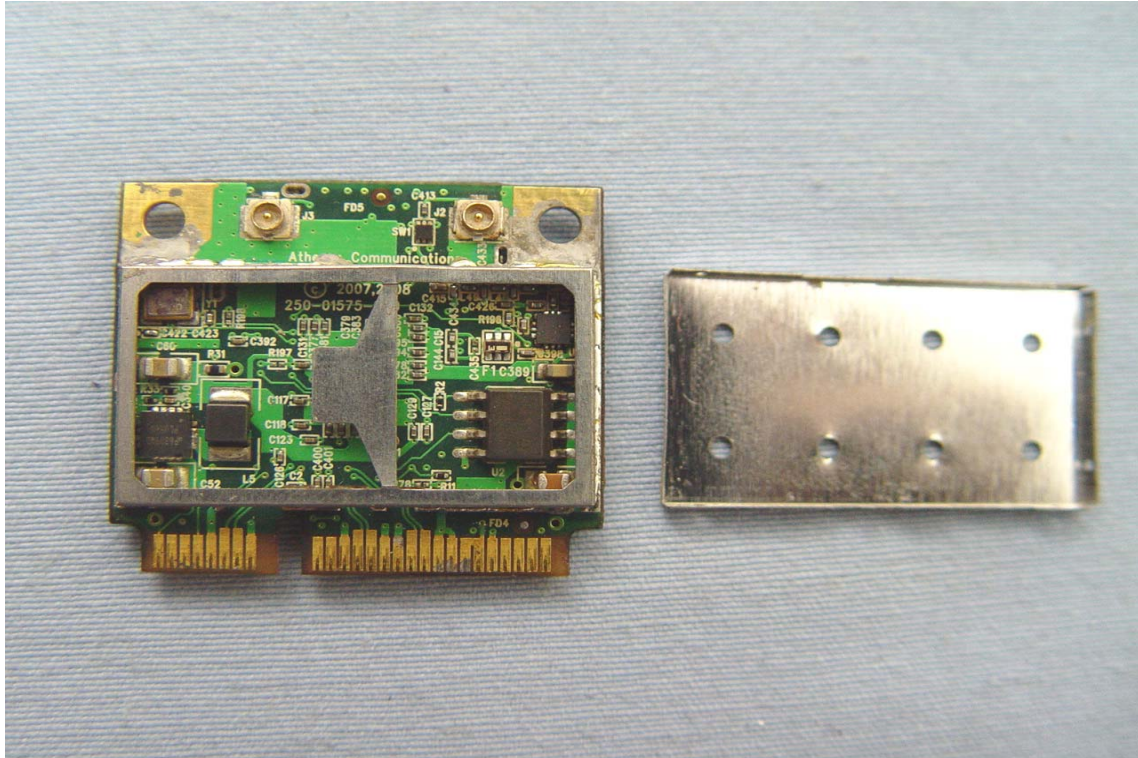
INTERNAL PHOTOGRAPHS OF EUT

Long Card



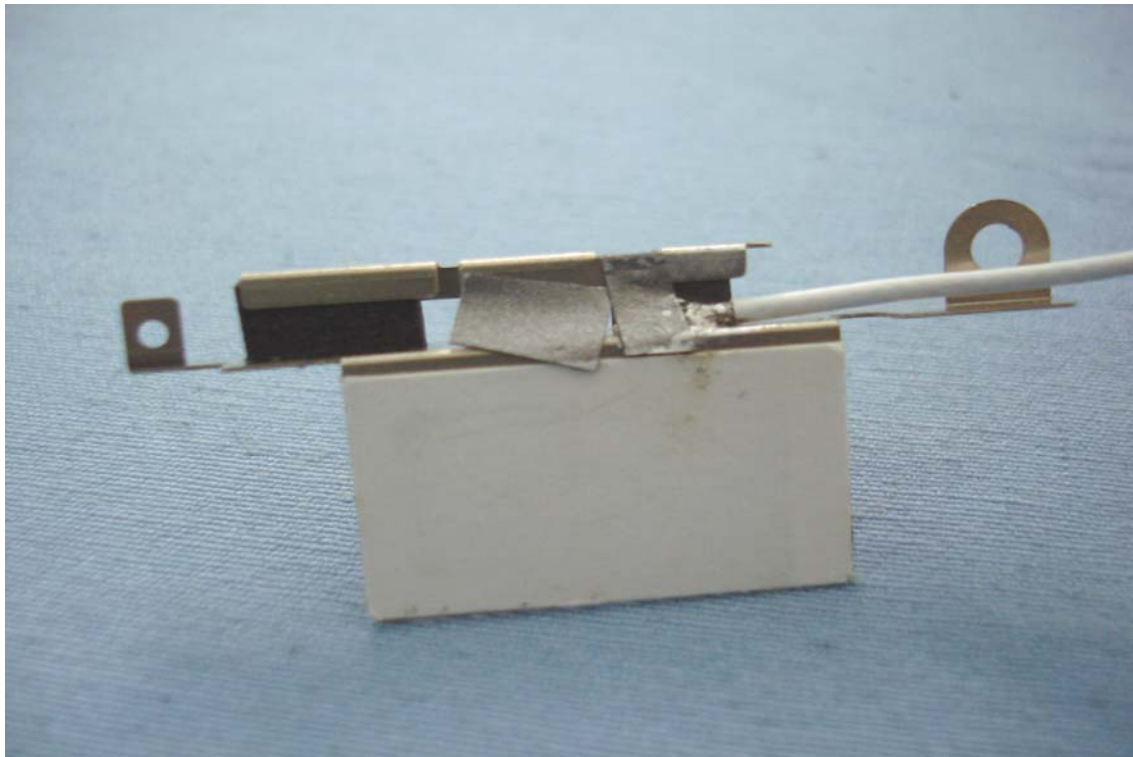
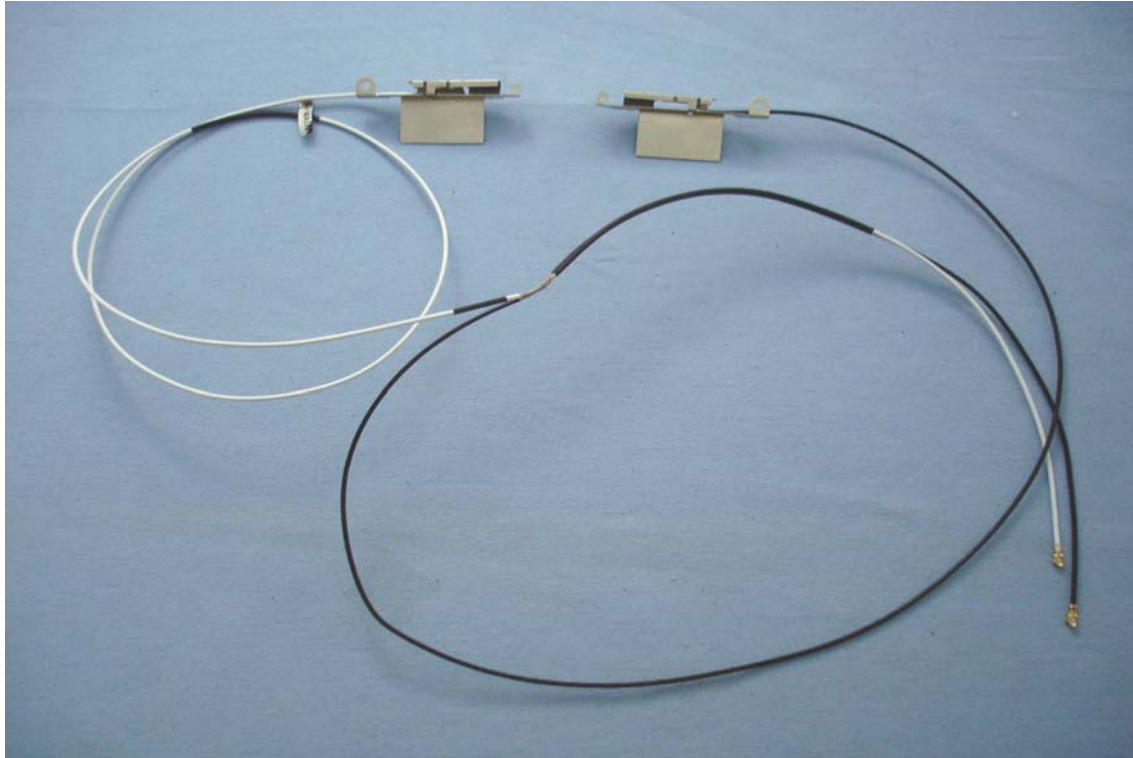


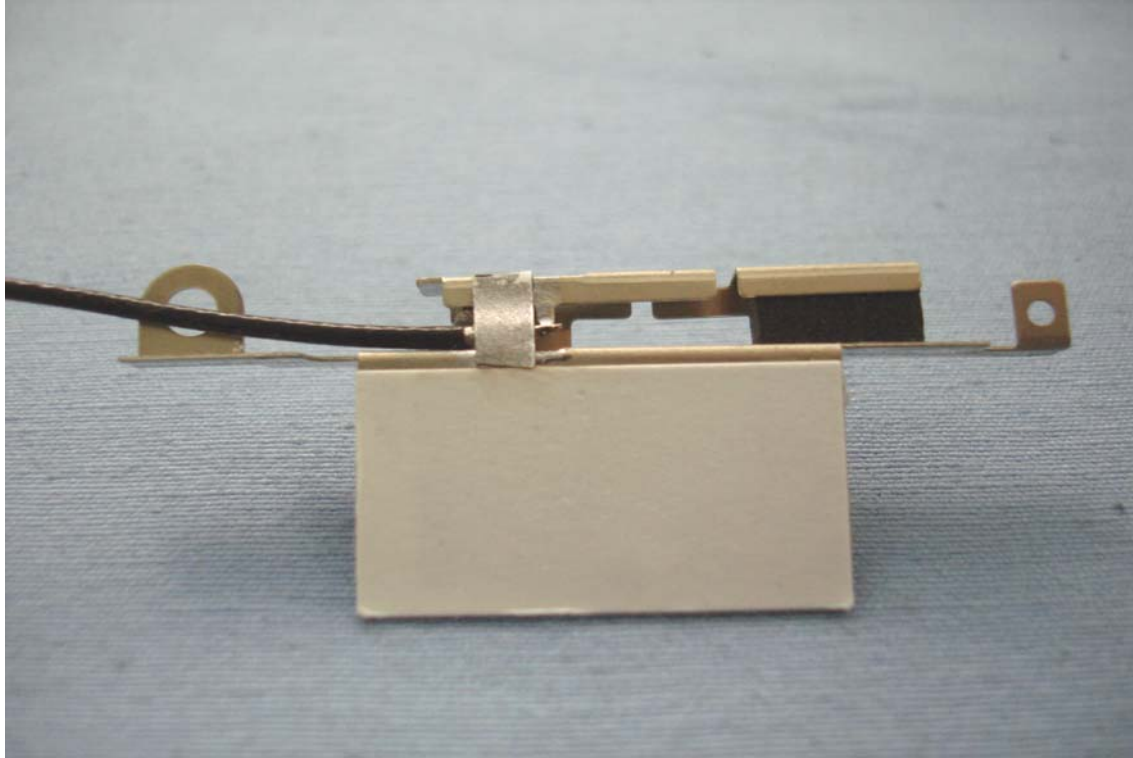
Half Card





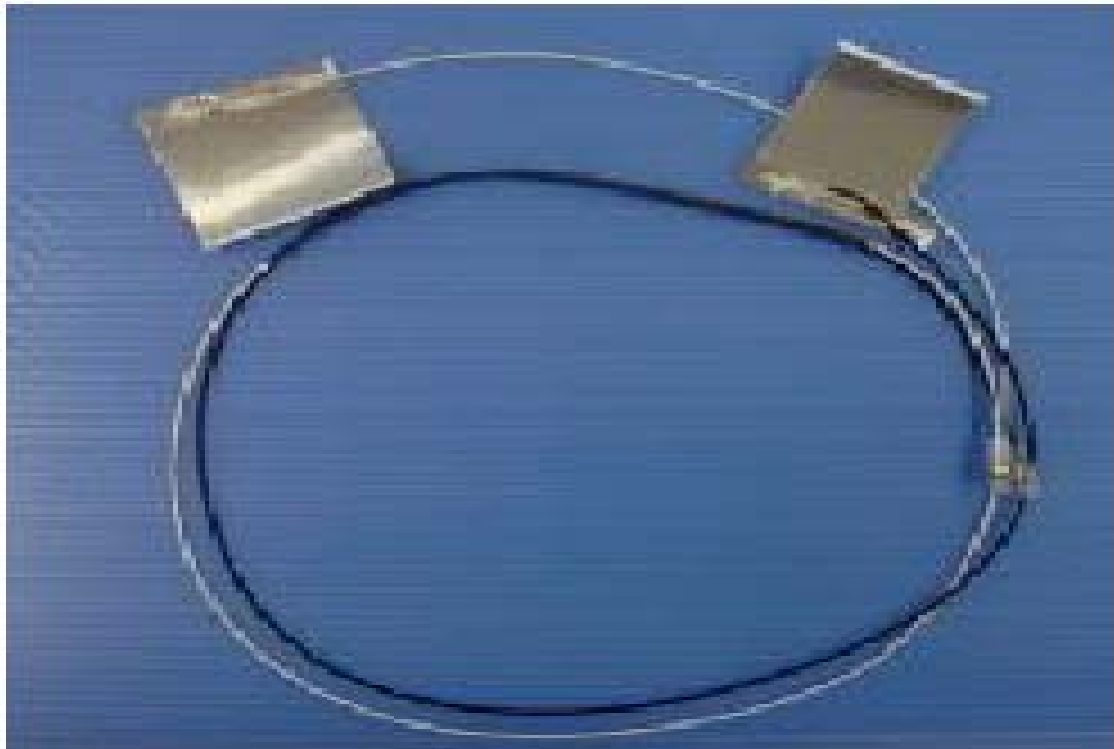
Approved Antenna: PIFA Antenna / Gain: 3.62 dBi



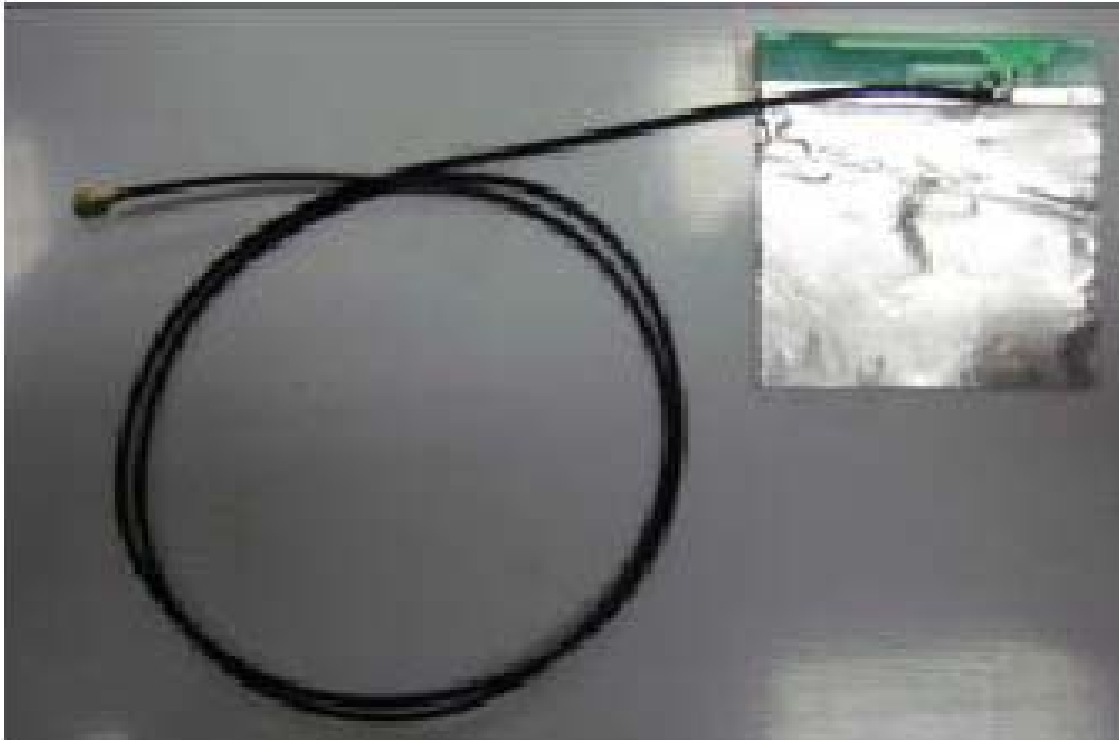


Added Antenna:

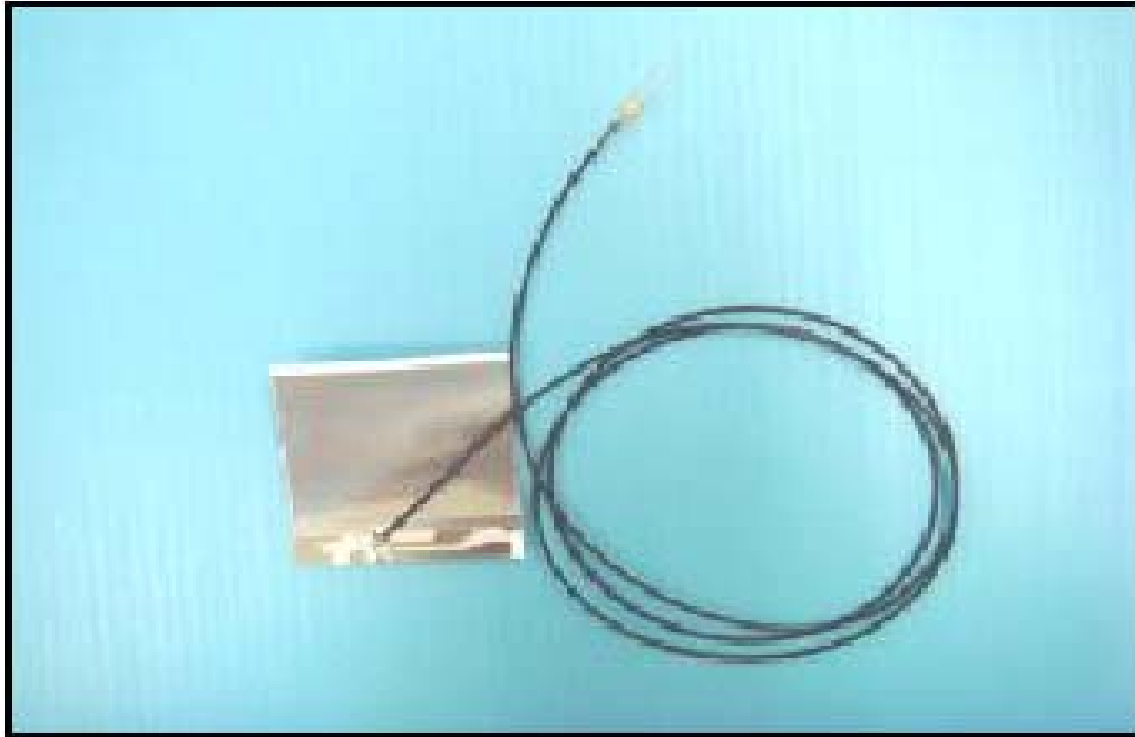
1. PIFA Antenna / Gain: 1.39 dBi



2. PIFA Antenna / Gain: -1.08 dBi

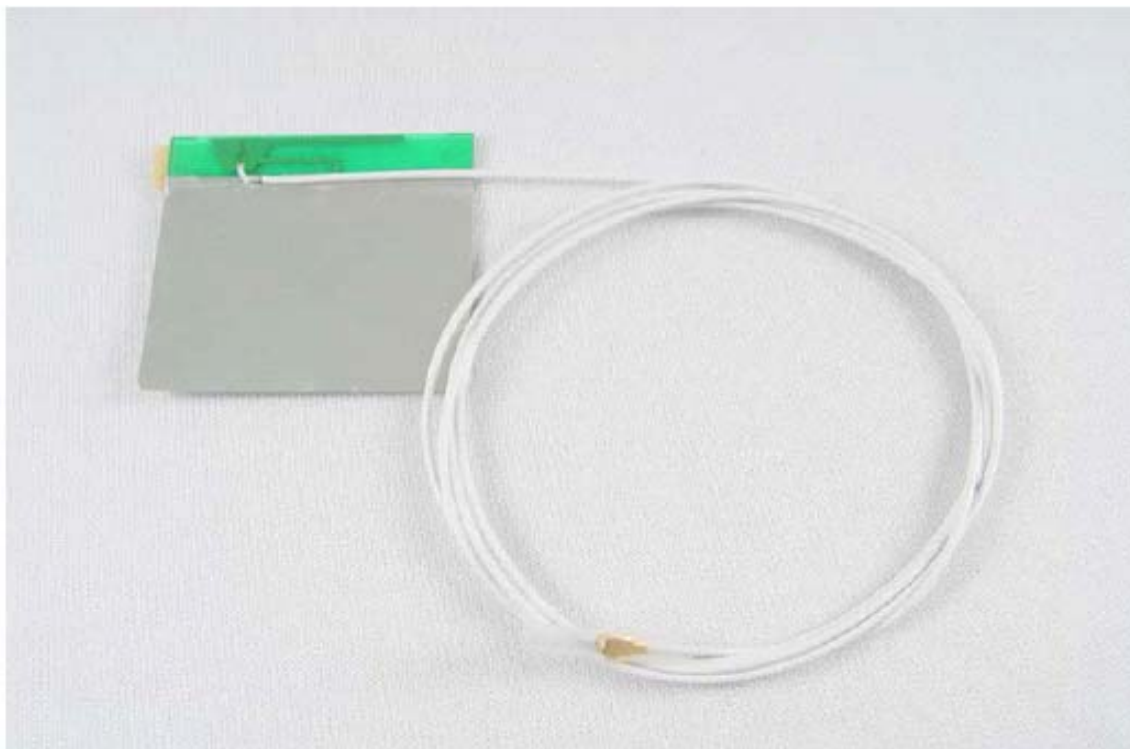


3. PIFA Antenna / Gain: 1.45 dBi





4. PIFA Antenna / Gain: 1.11 dBi

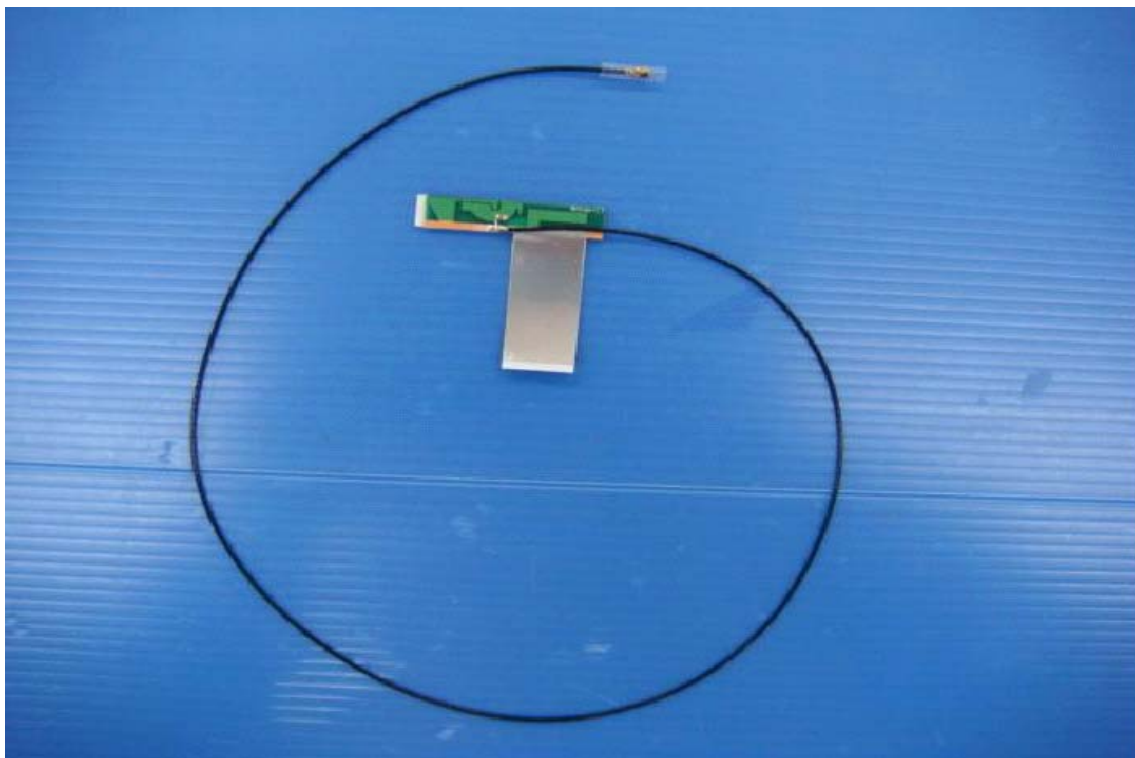
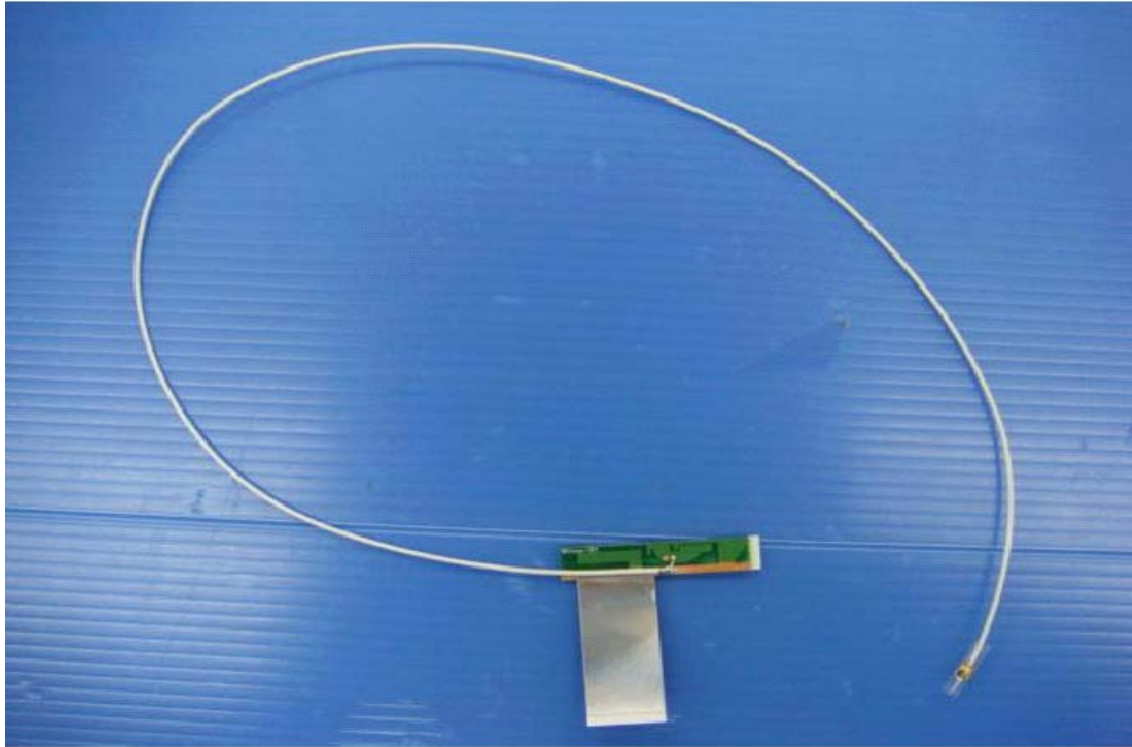


5. PIFA Antenna / Gain: -0.28 dBi





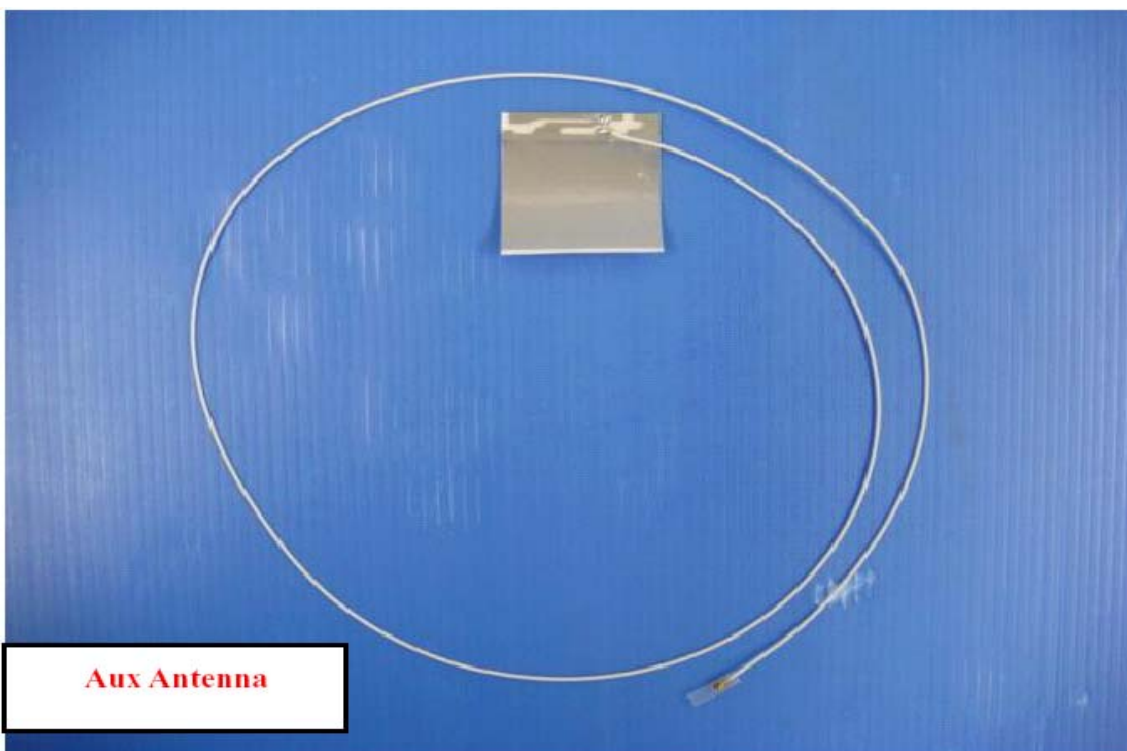
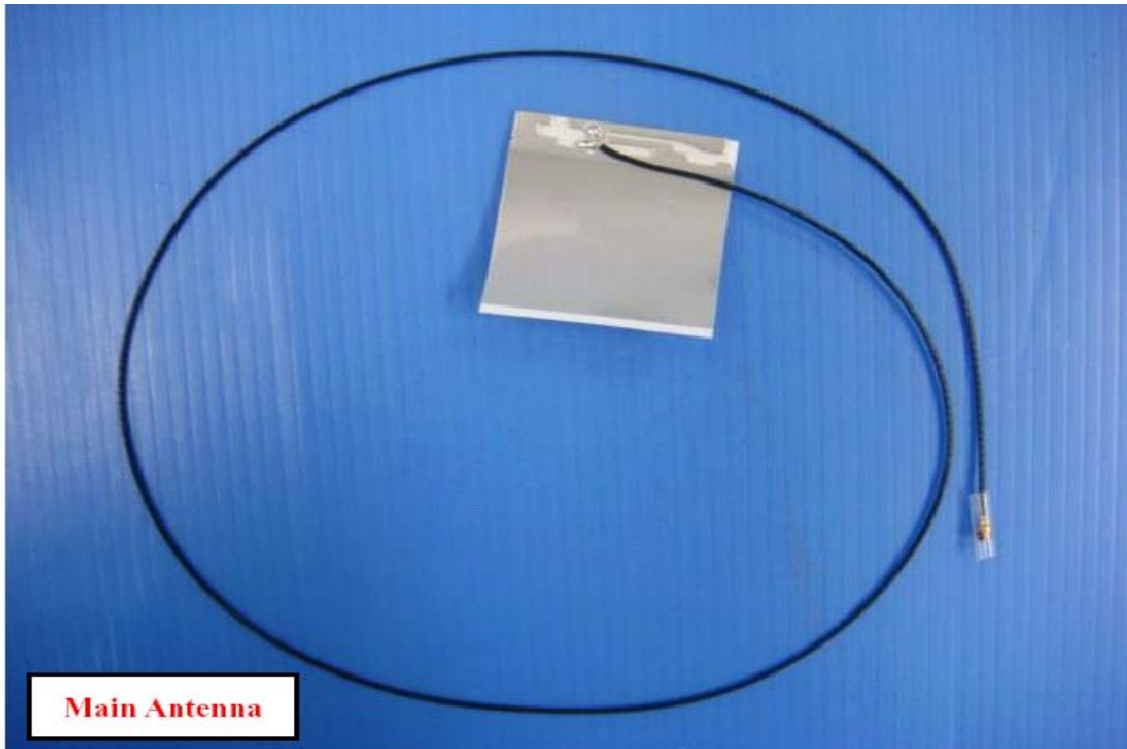
6. PIFA Antenna / Gain: 1.47 dBi



7. PIFA Antenna / Gain: 1.00 dBi



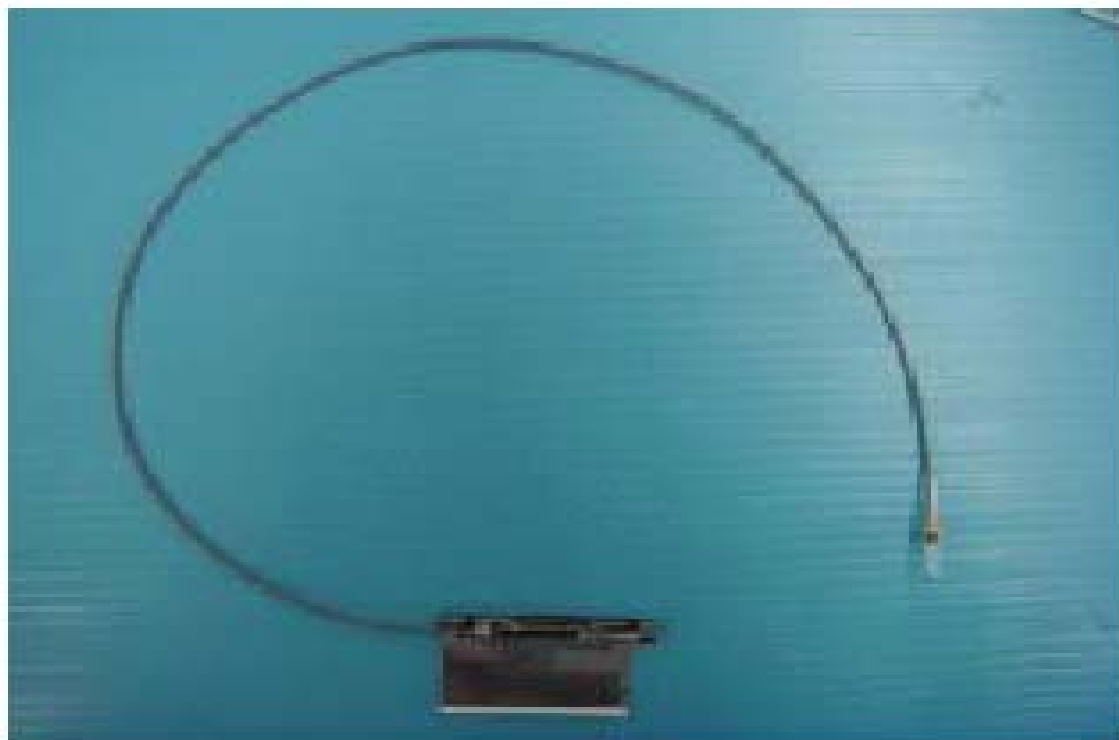
8. PIFA Antenna / Gain: 1.75 dBi



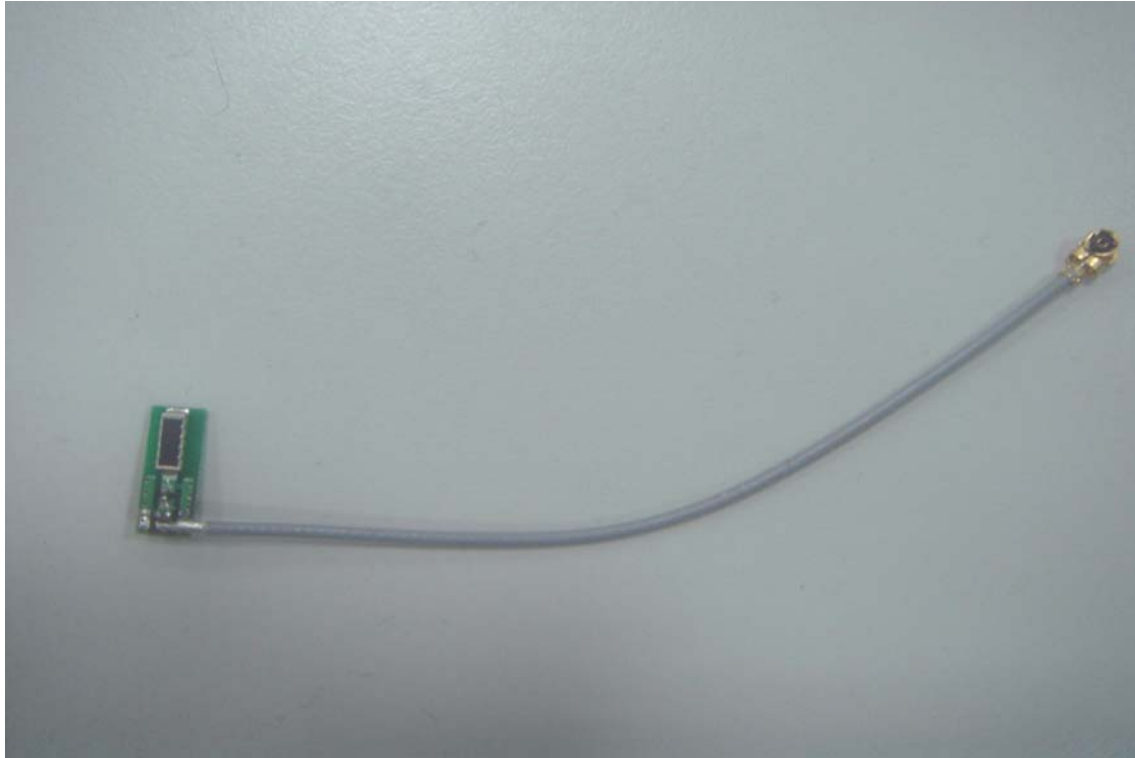


MIMO Antenna

9. PIFA Antenna / Gain: 0.10 dBi



10. PIFA Antenna / Gain: 1.7 dBi

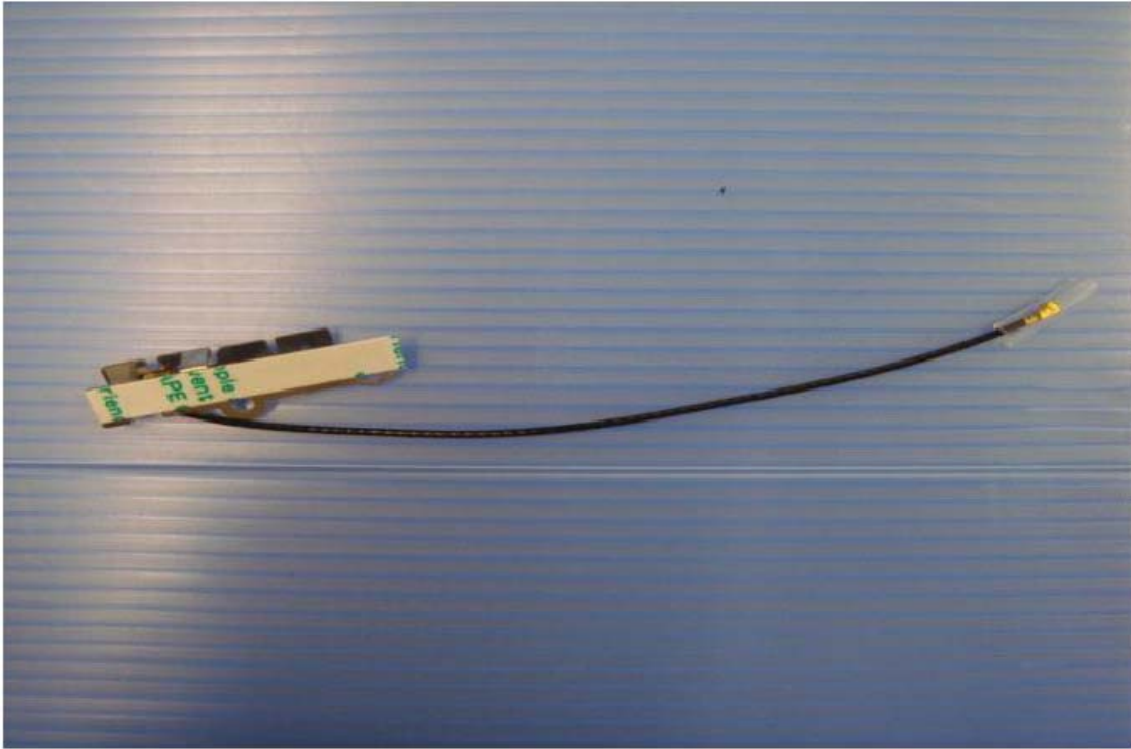


11. PIFA Antenna / Gain: 0.53 dBi





12. PIFA Antenna / Gain: -0.56 dBi



13. Dipole Antenna / Gain: 2.00 dBi (90ZLARFC0023A)



14. Dipole Antenna / Gain: 2.00 dB (90ZLARFC0022A)



15. Dipole Antenna / Gain: 3.20 dBi



16. Dipole Antenna / Gain: 0.53 dBi

